



UNITED STATES OF AMERICA

First Nat

FEDERAL OFFICE BUILDING

OMAHA, NEBRASKA

E. YOUNG

SEPT. 2, 2008

A. D. MARBLE & COMPANY Project File, Camp Hill, Pennsylvania  
East (facade) elevation & north elevation, looking southwest

Photo # 1 of 16



UNITED STATES OF AMERICA

FEDERAL OFFICE BUILDING  
100 S. 10th

FEDERAL OFFICE BUILDING

OMAHA, NEBRASKA

E. YOUNG

SEPT. 2, 2008

A.D. MARBLE Project File, Camp Hill, Pennsylvania

East elevation (facade), main entry, looking southwest; note pilasters, bronze  
spandrel panels, & engraved lettering on granite beltcourse

Photo # 2 of 16



FEDERAL OFFICE BUILDING

OMAHA, NEBRASKA

E. YOUNG

SEPT. 2, 2008

A.D. MARBLE & CO., PROJECT FILE, CAMP HILL, PENNSYLVANIA

WEST (REAR) elevation, looking SE

Photo # 3 of 16



GOVERNMENT PROPERTY  
NO PUBLIC OR  
CONSUMERS PARKING  
ALL SPACES RESERVED  
DAY AND NIGHT  
1967 JAN 22 10:00 AM

FEDERAL OFFICE BUILDING

OMAHA, NEBRASKA

E. YOUNG

SEPT. 2, 2008

A. D. MARBLE & CO., PROJECT FILE, CAMP HILL, PENNSYLVANIA

WEST (REAR) ELEVATION, LOOKING SOUTHEAST; note ADA-compliant ramps & entry

Photo # 4 of 16





UNITED STATES OF AMERICA

FEDERAL OFFICE BUILDING

OMAHA, NEBRASKA

E. YOUNG

SEPT 2, 2008

A.D. MARBLE & CO., PROJECT FILE, CAMP HILL, PENNSYLVANIA

NORTH & EAST ELEVATIONS, LOOKING SOUTHWEST; NOTE ENGRAVED LETTERING IN  
GRANITE BELTCOURSE

Photo # 5 of 16



FEDERAL OFFICE BUILDING

OMAHA, NEBRASKA

E. YOUNG

SEPT 2, 2008

A.D. MARBLE & CO., PROJECT FILE, CAMP HILL, PENNSYLVANIA

INTERIOR, VESTIBULE, LOOKING NORTH; NOTE BRONZE GRILLE, MARBLE WAINSCOTING & WALL

CLADDING, & DIRECTORY

PHOTO # 6 of 16



DIRECTORY

GENERAL OFFICE BUILDING  
25th St

FEDERAL OFFICE BUILDING

OMAHA, NEBRASKA

E. YOUNG

SEPT 2, 2008

A. D. MARBLE & CO., PROJECT FILE, CAMP HILL, PENNSYLVANIA

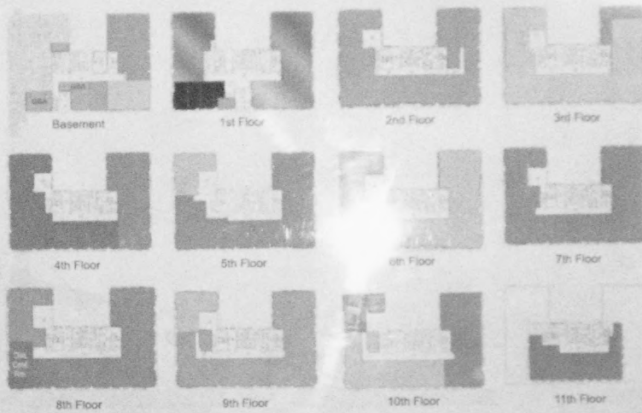
INTERIOR, LOBBY, LOOKING NORTHEAST

PHOTO # 7 of 16

# DIRECTORY

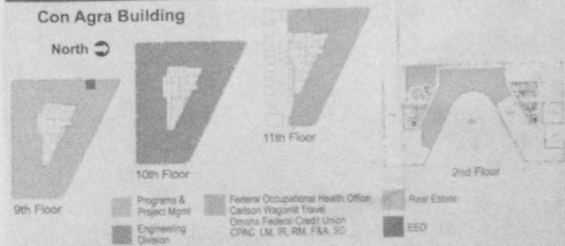
## Federal Building - 15th & Dodge

North ↻



## Con Agra Building

North ↻



Programs & Project Mgmt  
Engineering Division  
Federal Occupational Health Office  
Carlson Wagonlit Travel  
Omaha Federal Credit Union  
CPAC, LM, R, RM, FAA, SO  
Real Estate  
ESQ

- Executive Office
- Contracting Division
- Construction Division
- Health Break Fitness Center
- Engineering Division
- Programs & Project Mgmt
- Operations Division
- Day Care
- Info Mgmt Division
- Res Mgmt Division
- PMO
- Office of Counsel
- Break Concessions
- \* Post office location pending

FEDERAL OFFICE BUILDING

OMAHA, NEBRASKA

E. YOUNG

SEPT 2, 2008

A.D. MARBLE & CO., PROJECT FILE, CAMP HILL, PENNSYLVANIA

INTERIOR, LOBBY, DETAIL OF DIRECTORY BOARD HUNG ON NORTH WALL OF UPPER PORTION,  
LOOKING NORTH

Photo # 8 of 16





EXIT



FEDERAL OFFICE BUILDING  
OMAHA, NEBRASKA

E. YOUNG

SEPT 2, 2008

A.D. MARBLE & CO. PROJECT FILE, CAMP HILL, PENNSYLVANIA  
INTERIOR, LOBBY & FIRST-FLOOR CORRIDOR, LOOKING NORTHEAST

PHOTO # 9 OF 16



ART  
SMART

FEDERAL OFFICE BUILDING  
OMAHA, NEBRASKA  
E. YOUNG

SEPT 2, 2008

A.D. MARBLE & CO, PROJECT FILE, CAMP HILL, PENNSYLVANIA

INTERIOR, FIRST FLOOR, FORMER DAYCARE CENTER AREA, LOOKING SOUTHWEST

PHOTO # 10 OF 16



FEDERAL OFFICE BUILDING

OMAHA, NEBRASKA

E. YOUNG

SEPT 2, 2008

A.D. MARBLE & CO., PROJECT FILE, CAMP HILL, PENNSYLVANIA

INTERIOR, BASEMENT LEVEL, CORRIDOR, LOOKING SOUTH; NOTE ASBESTOS TILE FLOOR

PHOTO # 11 OF 16



FEDERAL OFFICE BUILDING  
OMAHA, NEBRASKA

E. YOUNG

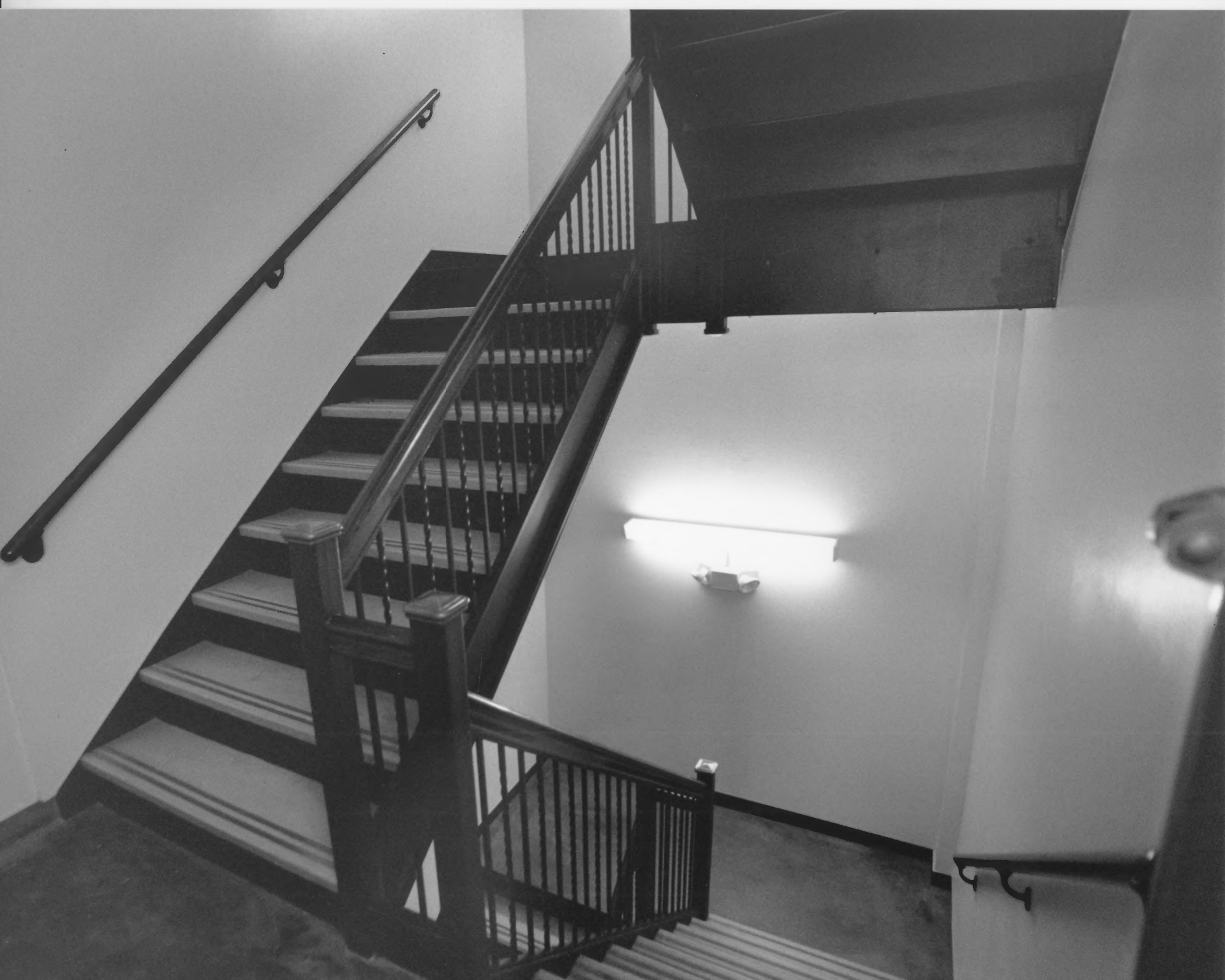
SEPT 2, 2008

A.D. MARBLE & CO, Project File, CAMP HILL, PENNSYLVANIA

INTERIOR, FIFTH FLOOR CORRIDOR, LOOKING NORTH; NOTE TERRAZZO FLOOR

PHOTO # 12 of 16





FEDERAL OFFICE BUILDING

OMAHA, NEBRASKA

E. YOUNG

SEPT 2, 2008

A.D. MARBLE & CO, PROJECT FILE, CAMP HILL, PENNSYLVANIA

INTERIOR, NORTH STAIRWELL BETWEEN FIFTH & SIXTH FLOORS, LOOKING EAST; NOTE  
IRON BANISTER, POLISHED OAK HANDRAIL, & BRONZE NEWEL POST CAPS

PHOTO # 13 of 14



EXIT

WOMEN

FEDERAL OFFICE BUILDING  
OMAHA, NEBRASKA  
E. YOUNG

SEPT 2, 2008

A.D. MARBLE & CO., PROJECT FILE, CAMP HILL, PENNSYLVANIA

INTERIOR, SEVENTH FLOOR CORRIDOR, LOOKING ~~SOUTH~~<sup>NORTHWEST</sup>, NOTE TERRAZZO FLOOR WITH  
INLAID MARBLE BORDER, DROPPED CEILING, & INSET FLOURESCENT LIGHTING

PHOTO # 14 of 16



FEDERAL OFFICE BUILDING  
ONAHHA, NEBRASKA

E. YOUNG

SEPT 2, 2008

A.D. MARBLE & CO., PROJECT FILE, CAMP HILL, PENNSYLVANIA

INTERIOR, NINTH FLOOR, LOOKING NORTHEAST; note industrial carpeting, dropped ceiling,  
AND INSET FLOURESCENT LIGHTING

PHOTO # 15 of 16



FEDERAL OFFICE BUILDING

OMAHA, NEBRASKA

E. YOUNG

SEPT 2, 2008

A.D. MARBLE & CO, PROJECT FILE, CAMPHIL, PENNSYLVANIA

INTERIOR, TENTH FLOOR, DETAIL OF STEEL DOOR LEADING INTO SAFE, LOOKING WEST

PHOTO # 16 of 16