



UNITED STATES DEPARTMENT OF THE INTERIOR
NATIONAL PARK SERVICE

NATIONAL REGISTER OF HISTORIC PLACES
PROPERTY PHOTOGRAPH FORM

(Type all entries - attach to or enclose with photograph)

STATE

Minnesota

COUNTY

Goodhue

FOR NPS USE ONLY

ENTRY NUMBER

DATE

JUN 4 1973

1. NAME

COMMON: Minnesota State Training School

AND/OR HISTORIC: Minnesota State Reform School

2. LOCATION

STREET AND NUMBER:

East Seventh Street

CITY OR TOWN:

Red Wing

STATE:

Minnesota

CODE

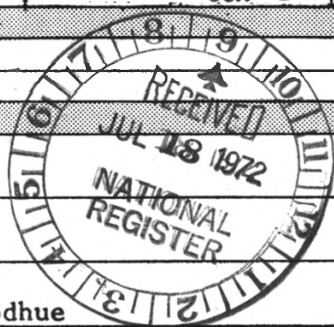
27

COUNTY:

Goodhue

CODE

049



3. PHOTO REFERENCE

PHOTO CREDIT: Cletus Hallquist Photos

DATE OF PHOTO: 1972

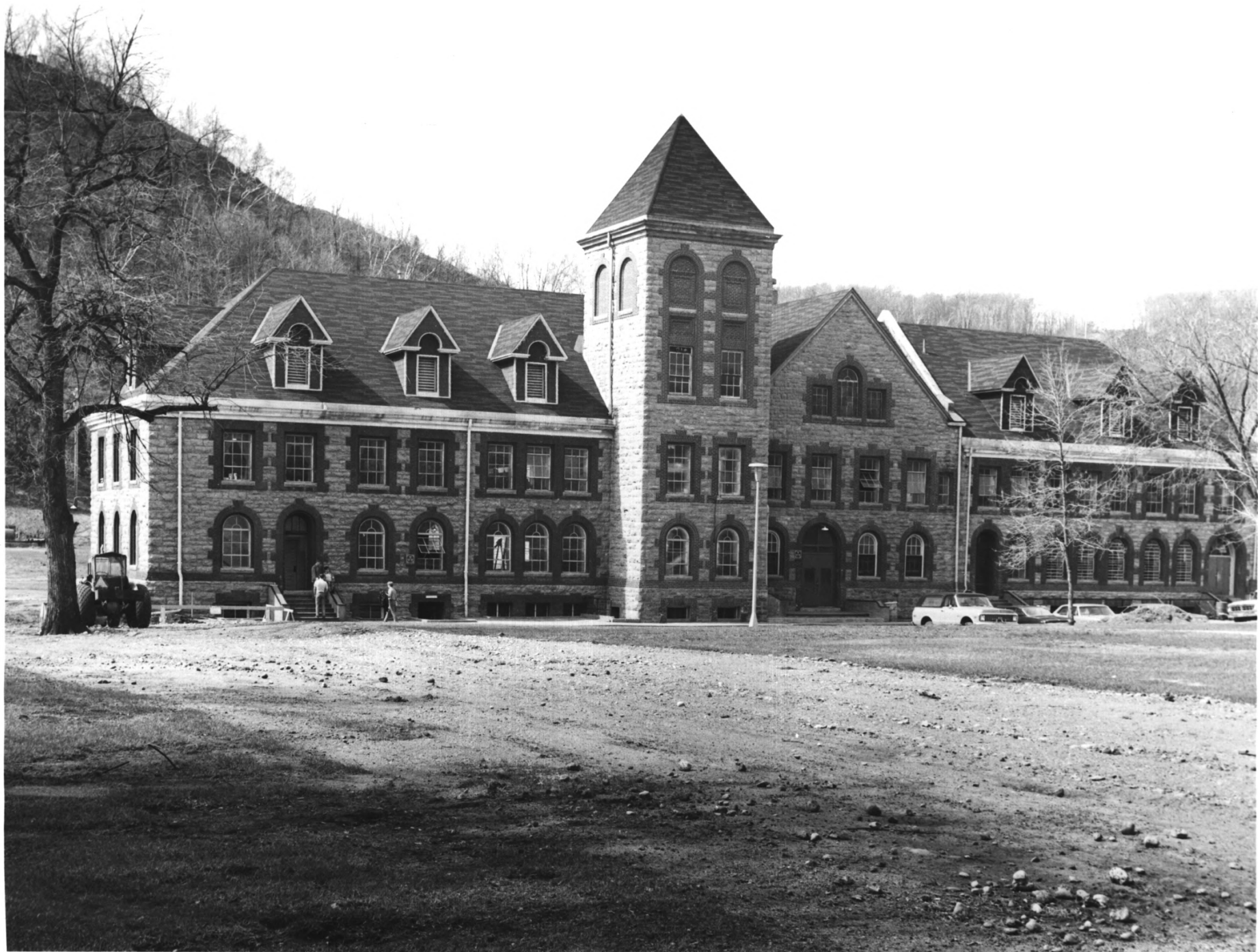
NEGATIVE FILED AT: Goodhue County Historical Society
Red Wing, Minnesota

4. IDENTIFICATION

DESCRIBE VIEW, DIRECTION, ETC.

The Chapel main entrance from the East

SEE INSTRUCTIONS



UNITED STATES DEPARTMENT OF THE INTERIOR
NATIONAL PARK SERVICE

NATIONAL REGISTER OF HISTORIC PLACES
PROPERTY PHOTOGRAPH FORM

(Type all entries - attach to or enclose with photograph)

STATE Minnesota	
COUNTY Goodhue	
FOR NPS USE ONLY	
ENTRY NUMBER	DATE
	JUN 4 1973

1. NAME

COMMON: **Minnesota State Training School**
AND/OR HISTORIC: **Minnesota State Reform School**

2. LOCATION

STREET AND NUMBER:
East Seventh Street

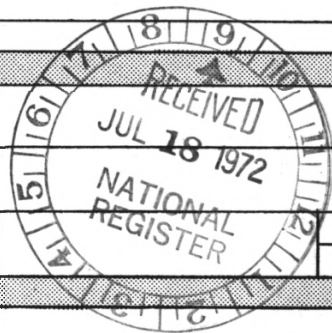
CITY OR TOWN:
Red Wing

STATE:
Minnesota

CODE
27

COUNTY:
Goodhue

CODE
049



3. PHOTO REFERENCE

PHOTO CREDIT: **Cletus Hallquist Photos**
DATE OF PHOTO: **1972**

NEGATIVE FILED AT: **Goodhue County Historical Society**
Red Wing, Minnesota

4. IDENTIFICATION

DESCRIBE VIEW, DIRECTION, ETC.

The Vocational Building facing East

SEE INSTRUCTIONS



UNITED STATES DEPARTMENT OF THE INTERIOR
NATIONAL PARK SERVICE

NATIONAL REGISTER OF HISTORIC PLACES
PROPERTY PHOTOGRAPH FORM

(Type all entries - attach to or enclose with photograph)

STATE Minnesota	
COUNTY Goodhue	
FOR NPS USE ONLY	
ENTRY NUMBER	DATE
JUN 4 1973	

SEE INSTRUCTIONS

1. NAME

COMMON: Minnesota State Training School

AND/OR HISTORIC: Minnesota State Reform School

2. LOCATION

STREET AND NUMBER:

East Seventh Street

CITY OR TOWN:

Red Wing

STATE:

Minnesota

CODE

27

COUNTY:

Goodhue

3. PHOTO REFERENCE

PHOTO CREDIT: Minnesota Historical Society

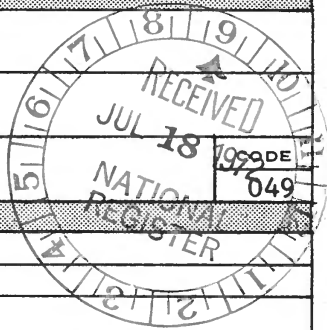
DATE OF PHOTO: 1972

NEGATIVE FILED AT: Minnesota Historical Society
690 Cedar Street, St. Paul, Minnesota

4. IDENTIFICATION

DESCRIBE VIEW, DIRECTION, ETC.

The Administration Building and Dining Hall from the North





UNITED STATES DEPARTMENT OF THE INTERIOR
NATIONAL PARK SERVICE

NATIONAL REGISTER OF HISTORIC PLACES
PROPERTY PHOTOGRAPH FORM

(Type all entries - attach to or enclose with photograph)

STATE Minnesota	
COUNTY Goodhue	
FOR NPS USE ONLY	
ENTRY NUMBER	DATE
	JUN 4 1973

1. NAME

COMMON: **Minnesota State Training School**
AND/OR HISTORIC: **Minnesota State Reform School**

2. LOCATION

STREET AND NUMBER:
East Seventh Street

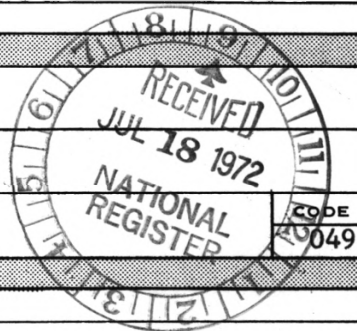
CITY OR TOWN:
Red Wing

STATE:
Minnesota

CODE
27

COUNTY:
Goodhue

CODE
049



3. PHOTO REFERENCE

PHOTO CREDIT: -----

DATE OF PHOTO: **1906**

NEGATIVE FILED AT: **Goodhue County Historical Society
Red Wing, Minnesota**

4. IDENTIFICATION

DESCRIBE VIEW, DIRECTION, ETC.

The Administration Building from the East

SEE INSTRUCTIONS