

**United States Department of the Interior
National Park Service**



**National Register of Historic Places
Registration Form**

This form is for use in nominating or requesting determinations for individual properties and districts. See instructions in How to Complete the National Register of Historic Places Registration Form (National Register Bulletin 16A). Complete each item by marking "x" in the appropriate box or by entering the information requested. If any item does not apply to the property being documented, enter "N/A" for "not applicable." For functions, architectural classification, materials, and areas of significance, enter only categories and subcategories from the instructions. Place additional entries and narrative items on continuation sheets (NPS Form 10-900a). Use a typewriter, word processor, or computer, to complete all items.

1. Name of Property

historic name East Gloucester Square Historic District

other names/site number _____

2. Location

street & number Multiple addresses N/A not for publication

city or town Gloucester N/A vicinity

state Massachusetts code 025 county Essex County code 009 zip code 01930

3. State/Federal Agency Certification

As the designated authority under the National Historic Preservation Act of 1986, as amended, I hereby certify that this nomination request for determination of eligibility meets the documentation standards for registering properties in the National Register of Historic Places and meets the procedural and professional requirements set forth in 36 CFR Part 60. In my opinion, the property meets does not meet the National Register Criteria. I recommend that this property be considered significant nationally statewide locally. (See continuation sheet for additional comments.)

Judith B. McDonough

3/15/96
Date

Signature of certifying official/Title Judith B. McDonough, Executive Director
Massachusetts Historical Commission, State Historic Preservation Officer

State or Federal agency and bureau _____

In my opinion, the property meets does not meet the National Register criteria. (See continuation sheet for additional Comments.)

Signature of certifying official/Title _____

Date _____

State or Federal agency and bureau _____

4. National Park Service Certification

I, hereby certify that this property is:

- entered in the National Register
 - See continuation sheet.
- determined eligible for the National Register
 - See continuation sheet.
- determined not eligible for the National Register
- removed from the National Register
- other (explain): _____

For

Signature of the Keeper

Edson H. Beall Date of Action 4-26-96

Entered in the
National Register

East Gloucester Square Historic District

Name of Property

Essex County, MA

County and State

5. Classification

Ownership of Property

(Check as many boxes as apply)

- private
- public-local
- public-State
- public-Federal

Category of Property

(Check only one box)

- building(s)
- district
- site
- structure
- object

Number of Resources within Property

(Do not include previously listed resources in the count.)

Contributing	Noncontributing	
186	50	buildings
66	1	sites
1		structures
1		objects
254	51	Total

Name of related multiple property listing

(Enter "N/A" if property is not part of a multiple property listing.)

Gloucester Multiple Property Submission (Maritime Context)

Number of contributing resources previously listed in the National Register

6. Function or Use

Historic Functions

(Enter categories from instructions)

DOMESTIC: single and multiple dwellings, secondary structures

COMMERCE: specialty store, warehouse

GOVERNMENT: firestation

EDUCATION: schoolhouse

RELIGION: church, parsonage

INDUSTRY: fish processing, storage

TRANSPORTATION: water-related; ship, wharf

LANDSCAPE: town landing, natural feature (harbor)

Current Functions

(Enter categories from instructions)

DOMESTIC: single and multiple dwellings, secondary structures

COMMERCE: specialty store, warehouse

GOVERNMENT: firestation

RELIGION: church, parsonage

INDUSTRY: fish processing, storage

TRANSPORTATION: water-related; ship, wharf

RECREATION: playhouse

LANDSCAPE: parking lot, town landing, natural feature

(harbor)

7. Description

Architectural Classification

(Enter categories from instructions)

COLONIAL: Georgian; EARLY REPUBLIC: Federal;

MID-19TH CENTURY: Greek Revival, Gothic Revival

LATE VICTORIAN: Italianate, Second Empire, Queen Anne, Stick Style, Shingle Style

LATE 19TH/EARLY 20TH REVIVALS: Colonial Revival

LATE 19TH/EARLY 20TH AMERICAN: Craftsman

Materials

(Enter categories from instructions)

foundation Brick, Granite, Concrete

walls Wood Shingle, Clapboard, Asphalt Shingle, Asbestos Shingle, Brick

roof Wood Shingle, Asphalt Shingle, Slate

other Granite Walls and Seawalls

Narrative Description

(Describe the historic and current condition of the property on one or more continuation sheets.)

United States Department of the Interior
National Park Service

National Register of Historic Places Continuation Sheet

East Gloucester Square District
Gloucester (Essex County)
Massachusetts

Section number 7 Page 1

7. DESCRIPTION

Introduction

The East Gloucester Square District is an unusually well preserved microcosm of the bustling maritime economy that led Gloucester to prosperity throughout the 19th and 20th centuries. Its inclusive mix of residential, commercial, institutional, and marine industrial structures illustrates major historic development patterns, architectural and technological trends, and the constant evolution of the cultural landscape to meet changing social and economic realities. Focused on the Inner Harbor, the district encompasses ca. 75 acres and ca. 186 contributing buildings accompanied by outbuildings, stone walls, stone wharves, and landscapes that date from the 1700-1945 period of significance.

The village at East Gloucester was most intensely developed in the 19th century. Wharves serving several prominent fisheries sprang up to redefine the waterfront, while a small commercial node developed at the important intersection of East Main, Highland, and Plum Streets, known as East Gloucester Square. Mostly small to medium-size houses lined these same routes, with several notable mansions punctuating the heights of Mt. Pleasant Avenue.

Gloucester is the predominant community on the Cape Ann peninsula north of Boston. Like many of the region's villages, East Gloucester is focused on the waterfront which provided a livelihood for most residents. East Gloucester's name and history have evolved from its fortuitous location on the sheltered waters of Gloucester's Inner Harbor. This unusually well protected sanctum on the east side of Gloucester Harbor proper was and remains the focus of the city's considerable maritime industries, especially those related to fishing.

Located on the Eastern Point peninsula which embraces Gloucester Harbor and protects it from the Atlantic Ocean, East Gloucester is an echo of the dominant settlement on the west or inland side of the Inner Harbor (see Central Gloucester Historic District: NR 1982 and proposed Boundary Increase). Just as that settlement was nurtured by the sheltered inlets of Town Cove and Vincent's Cove, East Gloucester grew up around Smith's Cove, bracketed by Rocky Neck (S) and Parson's Point/Wharf (N).

The district is focused on the linear corridor of East Main Street which was laid out to East Gloucester Square in 1704, skirting the harbor's edge. Short courts lead east to the granite wharves and wooden piers that form the working waterfront. Some of this land was created in the mid 19th century in a process called wharfing-out as massive granite block seawalls stabilized the infill of newly created wharves. Seawalls continue to define much of the district waterfront, especially at the northern end. In a few cases, most notably at Wonson's Wharf/Pirates' Way north of Robinson's Cove, marine industrial uses have been displaced by residential or arts-related uses. In general, however, East Gloucester's shoreline retains an unusual number of historic marine industrial uses with a high degree of physical integrity.

(continued)

United States Department of the Interior
National Park ServiceNational Register of Historic Places
Continuation SheetEast Gloucester Square District
Gloucester (Essex County)
MassachusettsSection number 7 Page 2

The centerpiece of the district is East Gloucester Square at the intersection of East Main, Plum, and Highland Streets. Highland Street was probably the first road in East Gloucester to lead east from the harbor area to upland agricultural areas that characterized most of the Eastern Point peninsula. The square is now marked by a small cluster of turn-of-the-century commercial buildings. Plum Street, laid out ca. 1848 to accommodate the rapidly expanding population, relates to East Gloucester's development as a compact and thriving fishing village, rather than to its earlier agricultural interests. Steep rocky ledges south of Plum Street precluded creation of further east-west streets in that direction. That area of ledge is the only significant undeveloped land in the district. There are no parks or public spaces other than the unpaved parking area adjacent to the city-owned Robinson's Landing.

Buildings in the district overwhelmingly date from the mid 19th century, although earlier and later contributing examples are present as well. Most are tightly sited, with residential properties often set off by small front and side yards defined by granite block retaining walls. These walls reflect the steepness of the terrain as well as the strength of the local granite industry. Dwellings are occasionally accompanied by period outbuildings, but more commonly by early 20th century garages. Wood-frame construction, usually with clapboard siding, is nearly universal for all building types. Scale is generally small and confined to 1 and 1/2 to 2 and 1/2 story height. Predominant architectural styles include Federal, Greek Revival, Gothic Revival, Italianate, and Queen Anne. The district is distinguished from immediately surrounding areas by its generally good condition, high degree of integrity, and low number of post-World War II intrusions.

The following text describes the specific character of the streets within the district. It is followed by an analysis of representative architectural styles and building types.

Streetscapes

East Main Street is the dominant and also the most diverse streetscape within the district. Typically, dwellings from the mid 19th century are the most common building type. Like their counterparts throughout the district, they are generally wood-frame structures of modest scale and design, closely sited, and set off from the street by shallow front yards which are often defined by granite retaining walls. Differences include the occasional incorporation of commercial functions, and immediate proximity to the harbor for those sited on the east side of the street. Two-family forms are also somewhat more common. Finally, most of the earliest houses in the district are found here.

East Main Street also encompasses both of the district's two commercial nodes. One at the intersection of East Main and Highland Streets is known as East Gloucester Square (ph. 11); the other is located at the south end of the district at East Main Street and Mount Pleasant Avenue (ph. 15). Both nodes are characterized by simple wood-frame buildings whose scale, massing, materials, and details complement the surrounding residences.

(continued)

United States Department of the Interior
National Park ServiceNational Register of Historic Places
Continuation SheetEast Gloucester Square District
Gloucester (Essex County)
MassachusettsSection number 7 Page 3

East Main Street is especially important because a diverse array of well preserved 19th to early 20th century marine industrial complexes survive there as illustrations of the base from which the city derived its wealth. These include Reed & Gamage (211 East Main Street; L 19th; Assessors #79-2; ph. 1, 12, 13), the John F. Wonson Company Store (233-237 East Main Street; 1851-72; Assessors #79-6, 7, 8; ph. 14), and Gorton's (267 East Main Street; ca. 1910s; Assessors #80-32). These complexes include buildings, granite wharves, and wooden piers. Enduring granite wharves continue to mark the sites of other important marine industries like William Parsons & Co. (159 East Main Street; Assessors #63-26, 27) and the adjacent Wonson family wharf complexes (Ass #63-32 and 63-48), whose buildings have largely disappeared.

Highland Street forms the residential core of the district, with tightly sited rows of detached single-family houses tucked behind tidy granite retaining walls that march up the hill from the harbor to Mount Pleasant Avenue. Dating largely to the mid and late 19th century, these dwellings maintain a high degree of integrity and reflect the expansive architectural tastes of that period. They range from the chaste Greek Revival simplicity of the Henry Wonson House (17 Highland Street; 1840s; Assessors #64-22); to picturesque hybrids like the Frederick Gerring House (25 Highland Street; 1860s; Assessors #64-19; ph. 7) and the M. Barnett House (24 Highland Street; ca. 1860s; Assessors #64-17; ph. 6) with their steep Gothic facade gables, round-arched Italianate gable windows, and paneled Greek Revival pilasters; to the flamboyant Second Empire George Douglass House (27 Highland Street; 1884-85; Assessors #64-18; ph. 8) with its prominent tower and mansard roof with boldly overscaled round-arched dormers. The Italianate style is represented by the Dr. Eveleth House (20 Highland Street; ca. 1880; Assessors #59-8) with its period barn/garage and landscaped side yard. The architectural variety of Highland Street is tempered by common siting, setbacks, and landscape features; wood-frame construction, clapboard siding, 1 and 1/2 to 2 and 1/2 story height, and modest scale.

Laid out ca. 1848 by Samuel Wonson, Plum Street developed rapidly, producing today's harmonious, architecturally unified streetscape where trim wood-frame houses sit on small lots set off by granite retaining walls. Of particular interest in this working mariner's neighborhood are the nearly identical Greek Revival cottages, built with traditional side-gable, five bay, center entry forms, that ascend the south side of the street. These include the G. Gerring House (9 Plum Street), the C. Peterson House (11 Plum Street; Assessors #64-53), the Douglass/Merchant House (17 Plum Street; Assessors #64-50), the Herbert McQuin House (21 Plum Street; Assessors #64-47) and the J. S. McQuin House (25 Plum Street; Assessors #64-46) with its acorn dentils. Houses at the upper east end of Plum Street enjoy spectacular views of Gloucester Harbor. One large parcel on the north side of the street, formerly occupied by the Point Grammar School, is now vacant.

The heights of Mount Pleasant Avenue claim some of the most stylish, and some of the most traditional houses in the district. The former are sited on the west side where their elevation provides spectacular views over their neighbors to Gloucester Harbor. This land was subdivided by Charles Wonson (32 Highland Street; 1884-99; Assessors #64-4; ph. 9), who built at the corner of Highland

(continued)

United States Department of the Interior
National Park ServiceNational Register of Historic Places
Continuation SheetEast Gloucester Square District
Gloucester (Essex County)
MassachusettsSection number 7 Page 4

Street. Chief among the west side dwellings is the David Robinson House (77 Mount Pleasant Avenue; ca. 1870s; Assessors #64-7; ph. 10), an ambitious towered Italianate villa. The nearby Benjamin Robinson House (41 Chapel Street; ca. 1870s; Assessors #64-9) is another well-detailed example of the Italianate style. The Roger Wonson House (121 Mount Pleasant Avenue; 1860s; Assessors #78-24) and the Amos A. Story House (115-B Mount Pleasant Avenue; ca. 1870; Assessors #78-29) are large estates located further south on Highland Street where their lots extend eastward to East Main Street over steep rocky ledges.

On the east side are several five bay side-gable dwellings whose substantial farmsteads extended inland from the harbor and crowded village area. Reflecting the 18th century origins of this road as a way to farm and pasture lands, these humble dwellings include the Thomas Hillier House (62 Mount Pleasant Avenue; 1754; Assessors #77-15) whose owner was tenant on the large farmstead owned by Daniel Rogers. Others like the mid 19th century cottages at 80 and 82 Mount Pleasant Avenue (Assessors #77-30, 77-31) may have been moved onto the Wonson farmstead in the late 19th and early 20th centuries.

Architectural Styles and Building Types

Georgian and Federal Dwellings

Small numbers of dwellings from the 18th and early 19th centuries remain in the district, as reminders of its pre-maritime boom period. These timber-frame houses are simply massed and detailed, with 1 and 1/2 to 2 and 1/2 story, side-gable, center chimney, center entry forms.

One of the most important is the Smith House (253 East Main Street; 1730-80; Assessors #79-15; ph. 3), a small gambrel roof cottage with center chimney and off-set entry, tucked back along the water's edge. Despite some alterations, the interior retains wainscoting, cased girts, shoulder posts, and bake oven. The two story Griffin House (130 East Main Street; 1730; Assessors #59-47), with its asymmetrical three bay facade and chimney rising through the front roof slope, appears, like many early houses, to be an expansion of a smaller 1 and 1/2 story cottage. Important features include reeded pilasters framing the entry and small window openings with 6/6 sash. The extremely simple Douglass House (170 East Main Street; 1730-90; Assessors #64-58), is an asymmetrical five-bay, 1 and 1/2 story cottage whose early date is revealed in its low-posted form. It also appears to result from an evolutionary process that probably added the southern half and reduced the early chimney to a stove chimney in the late 19th century.

Greek Revival Dwellings

Excellent examples of Greek Revival architecture abound throughout this district whose first major period of growth coincided with the flowering of that style. Most are modest 1 and 1/2 story cottages built on both the traditional side-gable five bay form and the newly fashionable gable-end form that evolved at this time to mimic the silhouette of a pedimented Greek temple. Two and one-half story

(continued)

United States Department of the Interior
National Park ServiceNational Register of Historic Places
Continuation SheetEast Gloucester Square District
Gloucester (Essex County)
MassachusettsSection number 7 Page 5

examples of both forms are found as well. Common features include granite block foundations, clapboard siding, paneled pilaster and entablature trim for both house and its entry, and windows with 6/6 sash. Within the common framework described above, there is tremendous variety.

One and one-half story cottages built on the traditional side-gable, center entry, five bay form, achieve individuality primarily in their entablature ornament. The nearly identical Matthew Dedcovich House (283 East Main Street; 1854; Assessors #80-41; ph. 5), James Coas House (4 Eastern Point Road; 1860-69; Assessors #131-7), and Samuel Wonson House (19 Highland Street; 1851-69; Assessors #64-21) substitute acorns for dentils at the main cornice and bold projecting center entry. Both acorn dentils and projecting entries are features common to East Gloucester. The acorn dentils, also found on the simpler Jeremiah Coas House (182 East Main Street; 1830-50; Assessors #64-63), are especially unusual. The Henry Wonson House (17 Highland Street; 1840s; Assessors #64-22) aligns oculi with wreath surrounds above window and door openings. The David Marble House (6 Davis Street; 1851-60; Assessors #64-13) centers three unusual oval windows directly beneath the entablature.

The Vinal McCaleb House (139 East Main Street; 1869-72; Assessors #59-88) is typical of the 2 and 1/2 story side-gable Greek Revival houses in the district. Its main entablature, windows with 6/6 sash, and interior chimneys are all typical features as are its entry with pilasters, entablature, and heavy lintel shelf. Corner pilasters may exist beneath the present 20th century wood shingle siding. The Emanuel Wonson House (161 East Main Street; 1825; Assessors #63-55), now aluminum sided and altered, was similar, revealing its earlier date in its four bay form and center chimney. It also displays the bold projecting entry seen on many cottage examples of the Greek Revival style in the district. The interesting William E. Wonson House (183R East Main Street; 1730-90; Assessors #63-33), tucked back from Main Street and oriented to the major wharf Wonson owned in the late 19th century, is a standard five bay Georgian house with massive center chimney that was updated ca. 1840 with the bold projecting entry displaying pilasters, entablature, and lintel shelf that characterized so many Gloucester houses of the period.

Italianate Dwellings

Like the Greek Revival, the Italianate style is varied and abundant in this district. Most residential examples are simple in execution with vertical gable-end silhouettes, bracketed cornices and entries, bay windows with paneled aprons, round-arched gable windows, and windows with 6/6 or 2/2 sash elsewhere. Some retain the traditional side-gable center entry form. Clapboard siding remains the rule, 2 and 1/2 story height becomes more common, and brick is sometimes substituted for granite as a foundation material.

The most elaborate, daring, and unusual example of this style is the David Robinson House (77 Mount Pleasant Avenue; ca. 1870s; Assessors #64-7; ph. 10), an ambitious Italianate villa whose hallmark L-plan and corner tower result from a ca. 1885 remodeling. Important features include the tower with its iron cresting, oriels above and beside the entry, arched gable windows, and wrap-around verandah.

(continued)

United States Department of the Interior
National Park ServiceNational Register of Historic Places
Continuation SheetEast Gloucester Square District
Gloucester (Essex County)
MassachusettsSection number 7 Page 6

The turned posts and spindle screen of the latter reflect the Queen Anne style and reveal the 1880s remodeling effort.

An adjacent pair of 2 and 1/2 story houses belonging to members of the prominent Wonson family, near East Gloucester Square, represent the quality of traditional side-gable Italianate houses in the district. The J.F. Wonson House (142 East Main Street; ca. 1880; Assessors #63-6; ph. 2) displays a symmetrical three-bay facade centered on an entry whose turned porch supports and bracketed hip roof are surmounted by a bracketed oriel window. Similar windows with paneled aprons frame the entry; paired windows with heavy lintels are located above at the second story. The F.G. Wonson House (146 East Main Street; c. 1880; 63-7) displays similar quality on a more standard five bay form.

The 2 and 1/2 story Baptist Parsonage (28 Highland Street; 1880-84; Assessors #64-2), the Charles H. Wonson House (32 Highland Street; 1884-99; Assessors #64-4; ph. 9), and the Joseph Parsons House, 79 Mt. Pleasant Avenue; 1872-73; Assessors #64-6) are all typically modest but well detailed gable-end examples, adhering to the common features described above.

Greek/Gothic/Italianate Hybrid Dwellings

Like many Massachusetts communities, Gloucester developed a picturesque hybrid of the Greek Revival, Gothic Revival, and Italianate styles built on a traditional 1 and 1/2 story, or occasionally 2 and 1/2 story, side-gable form. The Frederick Gerring House (25 Highland Street; 1860s; Assessors #64-19; ph. 7) and the William H. Wonson II House (261 East Main Street; 1860s; Assessors #80-30; ph. 4) are prototypical examples which are purely Greek Revival below the roofline with paneled pilasters and an acorn dentil entablature. Above however, both sprout a pair of steep flush-board Gothic facade gables with round-arched or heavy linteled Italianate windows respectively. The M. Barnett House (24 Highland Street; ca. 1860s; 64-17; ph. 6) is a more unusual example that rises 2 and 1/2 stories to triple facade gables; Italianate bow windows flank the center entry with its bracketed hood. The Falt-Reed House (172-174 East Main Street; 1860s; 64-59, 60; ph. 1), also 2 and 1/2 stories, is a double-house which unites its paired entries beneath a single pediment and frames the whole with Italianate bay windows. It displays paired facade gables with round arched windows. This house sits on a small rise behind a granite retaining wall overlooking the harbor at Robinson Landing (Assessors #79-1).

Second Empire Dwellings

This style is poorly represented in the district which favors the contemporary Italianate style. The best examples are both 1 and 1/2 story cottages on Highland Street. The flamboyant George Douglass House (27 Highland Street; 1884-85; Assessors #64-18; ph. 8) with its prominent tower, and mansard roof with boldly overscaled round-arched dormers is the district's boldest experiment with the Second Empire style. This otherwise modest 1 and 1/2 story cottage is dominated by its picturesque roof and

(continued)

United States Department of the Interior
National Park ServiceNational Register of Historic Places
Continuation SheetEast Gloucester Square District
Gloucester (Essex County)
MassachusettsSection number 7 Page 7

south-side verandah. Queen Anne sash, with small multi-panes over two panes in the tower base, reflects the 1880s construction date. The well detailed but somewhat more subdued Charles Reed House (8 Highland Street; 1884-90; Assessors #63-13) is built on a T-plan and displays several bay windows with paneled aprons, and a fine modillion cornice supporting a slate mansard roof with gabled dormers.

Queen Anne Dwellings

Most Queen Anne dwellings in the district are relatively simple examples of the style, built on by then common gable-end plans, and characterized by decorative shingles mixed with the standard clapboard sheathing. Turned posts and spindles are found at major entries. The William C. Wonson House (183 East Main Street; ca. 1880; Assessors #63-34) on the east side of the street near East Gloucester Square, is a typical example with scalloped shingles in the front gable. A two story bay window, derived from the preceding Italianate style, adjoins the entry whose simple gabled porch displays turned posts and spindle screen. Another example is the W.H. Cross House (234 East Main Street; ca. 1890; assessors #80-25) with its decorative shingles, brackets, and bay windows.

Institutional Buildings

The East Gloucester Engine House (75 Mount Pleasant Avenue; 1873; Assessors #64-8) is a 2 and 1/2 story wood-frame gable-end structure built on an L-plan; an unusual oculus with scroll sawn surround lights the gable. The builder was Orlando Garland.

The Church (153 East Main Street; 1886; Assessors #63-22), built to serve the East Gloucester Universalist Parish, is one of the most striking examples of the Queen Anne style in the city, displaying a lively combination of forms, materials, and textures within a traditional gable-end with central entry and steeple format.

The North Shore Arts Association Building (7 Pirates Lane/197R East Main Street; ca. 1885; Assessors #63-47; ph. 18) is a very plain 2 and 1/2 story gable-end example of the Queen Anne style whose simplicity is relieved by some decorative shingling.

Commercial Buildings

At East Gloucester Square, a two story Italianate double store (150-152 East Main Street; L 19th cen.; Assessors #63-9; ph. 11) has been aluminum sided, and received recent 1/1 sash, but retains its bracketed parapet, and store fronts with multi-pane display windows and recessed entries headed by a dentilated, bracketed entablature. Another Italianate style commercial building with unusually well preserved storefronts remains at 193-95 East Main Street (1892; Assessors #63-36).

The large 2 and 3/4 story gable-end Arts Gallery (277-79 East Main Street; ca. 1890s; Assessors #80-37; ph. 15) dominates the intersection of East Main Street and Mount Pleasant Avenue. Its simple Queen Anne style details include a mix of clapboards at the first story with shingles above and brackets at the roof corners.

(continued)

United States Department of the Interior
National Park ServiceNational Register of Historic Places
Continuation SheetEast Gloucester Square District
Gloucester (Essex County)
MassachusettsSection number 7 Page 8Marine Industrial Complexes

The John F. Wonson Company Complex (233-37 East Main Street; 1851-ca. 1900; Assessors #79-6, 7, 8; ph. 14) consists of an office/store/industrial building fronting directly on the street, and two granite block wharves with ancillary structures behind, the same configuration that appeared on the 1884 Hopkins map. The main building consists of a clapboard clad, 1 and 1/2 story, three bay, gable-end office with center entry, and long, attached, one story shed with random fenestration, pedestrian entries, and vehicular entries extending northward. The sheds to the rear are simple one story, gable roof structures; three appear to date to the late 19th century while one is modern. Relating their positions to the 1884 map, shed #1 may have served as a fish house, and shed #4 as a sail loft.

The Reed & Gamage Complex (211 East Main Street; M-L 19th cen.; Assessors #79-2; ph. 1, 12) is a grander version of that general configuration, with a large mixed-use building fronting the street, and smaller sheds on the granite wharf and wooden piers to the rear. Based on map evidence, the 2 and 1/2 story main building originated at the north end, adjacent to the town landing at Robinson's Cove. The entire building is shown by 1899. It is a rambling gable roof structure of utilitarian design, now sheathed with asbestos shingles. Most windows retain 6/6 sash. In the early 20th century the north end of the building was extended eastward into the harbor on wooden piers where it appears to terminate in the only filleting shed to remain at Gloucester Harbor. Oddly this wing is built with a brick foundation precariously balanced on the wooden pier. The only structure of note to the rear is a large, early to mid 20th century crane used to haul boats from the water. Additionally, the 19th century schooner Coronet (ph. 13) is presently berthed there.

The most important marine industries in East Gloucester expanded and improved their facilities in the mid to late 19th century by wharfing out with backfilled wharves faced with massive granite blocks made available by the emerging local granite industry (see Granite context). In addition to the two complexes described above, these industries included Wonson's Wharf, (Assessors #63-48; ph. 18) facing Reed & Gamage on the north side of Robinson's Landing (now accessed by Pirates Lane) and Parson's Wharf (now occupied by the modern O'Donnell-Usen plant, 159 East Main Street; Assessors #63-26, 27). While the buildings are for the most part gone, the wharves and seawalls remain as enduring reminders of these landmark industries.

(end)

East Gloucester Square Historic District
Name of Property

Essex County, MA
County and State

8. Statement of Significance

Applicable National Register Criteria

(Mark "x" in one or more boxes for the criteria qualifying the property for National Register listing.)

A Property is associated with events that have made a significant contribution to the broad patterns of our history.

B Property is associated with the lives of persons significant in our past.

C Property embodies the distinctive characteristics of a type, period, or method of construction or represents the work of a master, or possesses high artistic values, or represents a significant and distinguishable entity whose components lack individual distinction.

D Property has yielded, or is likely to yield, information important in prehistory or history.

Criteria Considerations

(Mark "x" in all the boxes that apply.)

Property is:

A owned by religious institution or used for religious purposes.

B removed from its original location.

C a birthplace or grave.

D a cemetery.

E a reconstructed building, object, or structure.

F a commemorative property.

G less than 50 years of age or achieved significance within the past 50 years.

Narrative Statement of Significance

(Explain the significance of the property on one or more continuation sheets.)

9. Major Bibliographical References

(Cite the books, articles, and other sources used in preparing this form on one or more continuation sheets.)

Previous documentation on file (NPS):

- preliminary determination of individual listing (36 CFR 67) has been requested
- previously listed in the National Register
- previously determined eligible by the National Register
- designated a National Historic Landmark
- recorded by Historic American Buildings Survey # _____
- recorded by Historic American Engineering Record # _____

Areas of Significance

(Enter categories from instructions)

ARCHITECTURE

MARITIME HISTORY

COMMUNITY DEVELOPMENT

COMMERCE

TRANSPORTATION

Period of Significance

ca. 1700-1945

Significant Dates

ca. 1700-1946

Significant Person

(Complete if Criterion B is marked above)

Andrew Robinson (1679-1742)

Cultural Affiliation

N/A

Architect/Builder

N/A

Primary location of additional data:

- State Historic Preservation Office
- Other State agency
- Federal agency
- Local government
- University
- Other

Name of repository:

Cape Ann Historical Society

East Gloucester Square Historic District
Name of Property

Essex County, MA
County and State

10. Geographical Data

Acreege of Property ca. 75

UTM References

(Place additional UTM references on a continuation sheet)

1. 19 Zone	364300 Easting	4718680 Northing	3. 19 Zone	365000 Easting	4718380 Northing
2. 19 Zone	364580 Easting	4718950 Northing	4. 19 Zone	364080 Easting	4717700 Northing

 See continuation sheet

Verbal Boundary Description

(Describe the boundaries of the property on a continuation sheet.)

Boundary Justification

(Explain why the boundaries were selected on a continuation sheet.)

11. Form Prepared By

Candace Jenkins/Wendy Frontiero, Preservation Consultants, Gloucester Historical Commission,
name/title with Betsy Friedberg, National Register Director, MHC

organization Massachusetts Historical Commission date February 1996

street & number 220 Morrissey Blvd. telephone (617) 727-8470

city or town Boston state MA zip code 02125

Additional Documentation

Submit the following items with the completed form:

Continuation Sheets

Maps

- A **USGS map** (7.5 or 15 minute series) indicating the property's location.
- A **sketch map** for historic districts and properties having large acreage or numerous resources.

Photographs

Representative **black and white photographs** of the property.

Additional items (Check with the SHPO or FPO for any additional items)

Property Owner

(Complete this item at the request of the SHPO or FPO.)

name _____

street & number _____ telephone _____

city or town _____ state _____ zip code _____

Paperwork Reduction Act Statement: This information is being collected for applications to the National Register of Historic Places to nominate properties for listing or determine eligibility for listing, to list properties, and to amend existing listings. Response to this request is required to obtain a benefit in accordance with the National Historic Preservation Act, as amended (16 U.S.C. 470 et seq.).

Estimated Burden Statement: Public reporting burden for this form is estimated to average 18.1 hours per response including the time for reviewing instructions, gathering and maintaining data, and completing and reviewing the form. Direct comments regarding this burden estimate or any aspect of this form to the Chief, Administrative Services Division, National Park Service, P.O. Box 37127, Washington, DC 20013-7127; and the Office of Management and Budget, Paperwork Reductions Project (1024-0018), Washington, DC 20503.

United States Department of the Interior
National Park Service

National Register of Historic Places
Continuation Sheet

East Gloucester Square District
Gloucester (Essex County)
Massachusetts

Section number 8 Page 1

8. STATEMENT OF SIGNIFICANCE

The East Gloucester Square District is a well-preserved fishing village dating primarily from the mid to late-19th century. Its densely-built streetscapes crowd the water's edge on the eastern shore of Gloucester's Inner Harbor, and climb a steep hillside to the ridge of the peninsula of which it is a part. Historically, this district exemplifies the growth of local fisheries during the 19th and early 20th centuries-- intense, yet on a smaller scale than on the opposite (downtown) side of the harbor.

Exceptionally well-preserved today, the East Gloucester Square District displays a unique architectural variety and quality. It is particularly notable for its Greek Revival and Italianate style residential architecture, and for its collection of intact maritime-related buildings along the waterfront.

The District is characterized by significant examples of both residential and industrial architecture, a commercial center at East Gloucester Square, a smaller commercial node near Rocky Neck, and several institutional buildings. The East Gloucester Square District meets criteria A, B, and C of the National Register on the local level, and retains integrity of location, design, materials, setting, and workmanship.

The period of significance for this district is ca. 1700-1945.

Agriculture and Early Fisheries, ca. 1700-1830

Lightly settled in the 17th and 18th centuries, the East Gloucester peninsula was a rural area with a largely agricultural economy for the first two hundred years of Gloucester's growth. Several large land grants were made on the peninsula (including the portion south of Rocky Neck, which is now called Eastern Point) in the 17th century. Most of the owners lived downtown, however, and their holdings were worked by tenant farmers. Early development of the area was encouraged by a 1667 regulation that permitted a 660-foot wide cut of cordwood along the shoreline, in support of Gloucester's profitable coastwise trade in that product.

In 1704, a road was laid out to connect the Head of the Harbor with Niles Beach on Eastern Point (south of the East Gloucester Square District), presumably to facilitate the movement of timber and agricultural products from East Gloucester. Traversing most of what is now East Main Street, this thoroughfare also encompassed Highland Avenue and part of Mt. Pleasant Avenue, for until about the 1840s, steep ledge along the waterfront stopped East Main Street temporarily at East Gloucester Square. Travellers were diverted up Highland Street and back down Mt. Pleasant Avenue, to meet East Main Street again near Rocky Neck.

East Gloucester's distinctive maritime history began in this period with the legendary launching of the world's first schooner by Captain Andrew Robinson in 1713. Robinson's schooner is traditionally held to have been built at his wharf behind East Gloucester Square, now commemorated by the public-

(continued)

United States Department of the Interior
National Park Service

National Register of Historic Places
Continuation Sheet

East Gloucester Square District
Gloucester (Essex County)
Massachusetts

Section number 8 Page 2

access Robinson's Landing (East Main Street; Ass. # 79-1).

Andrew Robinson (1679-1742; married Rebecca Ingersol, 1704) was a shipbuilder and Banks fisherman, and is said to have owned a large house near his wharf and shipbuilding yard. A representative to the General Court in 1738 and 1739, Capt. Robinson is also remembered for the bravery and ingenuity he displayed while fighting in the French and Indian wars.

Although the attribution of the first schooner to Robinson is still controversial, the city's most authoritative local history concludes that:

"It is nearly certain, that, before this time, no vessel was known to carry two trapeziform sails, suspended by gaffs, and stretched out below by booms: and, unless his "schooner" was the first to display them, it is uncertain when they came into use; and no effort to ascertain the peculiarity that characterized her will be likely to be crowned with success." (Babson: 255)

The year 1713 was also notable for the first local mention of Samuel Pearce, shipwright and founder of a wealthy and influential mercantile family. Demand for his craft apparently brought Pearce to live on the Eastern Point peninsula, probably near the waterfront and possibly in the East Gloucester Square District. (Babson: 266-267)

Despite these early beginnings, settlement on the East Gloucester peninsula was sparse during this period. By 1728, a mere 15 families were scattered throughout the entire peninsula; five houses (including the "great house" of Captain Robinson) appear to have been located near East Gloucester Square by the close of the Revolutionary War. (Babson: 454) Most of the population was engaged in farming or shore fishing.

During the Revolutionary War, when many of Gloucester's maritime traders were forced out of their normal occupations, Samuel Wonson (1752-1829; founder of an East Gloucester fishing dynasty) was commended by George Washington for running the British blockade of the coastline. A compatriot, Capt. William Coas, who lived near the Square, "had often filled his house with captured property, but... died poor, though leaving a trunk full of Continental money." (Babson: 454)

By the early 1830s, only two wharves are documented in the East Gloucester Square District; both were located at Gloucester square. John Wonson's wharf, the smaller of the two, contained three small- to medium-sized structures. Giles & Wonson's wharf to the south was located approximately at the site of Robinson's Landing and Pirate's Lane (Robinson's Landing/Wonson's Wharf; Ass. # 79-1 and 63-48), and contained three smaller warehouses and one large structure described as a store.

The firm of Giles & Wonson, founded by Samuel Giles and Samuel Wonson (1773-1850; m. Lydia Rowe), maintained a fleet of a dozen fishing ships, including the Augusta, Forest, Mount Vernon, Tiger, Eagle, Lucinda, Three Sisters, Fair American, Romp, and Nautilus.

(continued)

United States Department of the Interior
National Park ServiceNational Register of Historic Places
Continuation SheetEast Gloucester Square District
Gloucester (Essex County)
MassachusettsSection number 8 Page 3

The straight sides shown on both Wonson's and Giles & Wonson's wharves on the early 1830s map suggest either wood wharf structures or granite seawalls; existing granite seawalls at these sites have a different configuration and appear to date from the mid- to late-19th century. No wharf buildings are known to survive from this period.

No schools or churches are documented in East Gloucester before the mid 19th century, perhaps indicative of the small population and low level of activity during this period. Nearly a dozen residential properties, however, survive to represent the eighteenth century. Most of these properties are clustered near the Square on East Main Street, while several dot the the ridge along Mt. Pleasant Avenue.

Among the best preserved examples of the Georgian period is the modest 1-1/2 story cottage at 62 Mt. Pleasant Avenue (Thomas Hillier House, ca.1754; Ass. # 77-15), which remained in agricultural use throughout the 19th century. Hillier, the first documented owner of this property (ca. 1812), owned acreage from Mt. Pleasant Avenue eastward to the ocean side of the peninsula. He also rented an extensive farm to the south of the district (on Eastern Point) from the estate of the wealthy downtown merchant, Daniel Rogers.

Another exceptional survivor from this period is the Smith House (253 East Main Street, ca. 1730-80; Ass. # 79-15). Located only about 20 feet from Smith's Cove, this very small, gambrel-roofed cottage appears to be the house of Daniel Smith (b. 1692; married Lydia Sargent in 1717), whose father John had a house near here before 1701.

Somewhat more sophisticated in design is the William E. Wonson House (183 rear East Main Street, ca. 1730-90; Ass. #63-33). Originally facing East Main Street on the Square, this Georgian-style house was moved to the back of its lot ca. 1872-84 for the construction of a more modern, Queen Anne style home for one of Wonson's descendants. Due to their locations, both 183 rear and 253 East Main Street are likely associated with the early establishment of East Gloucester's maritime industries.

Noteworthy Federal period buildings contained in the East Gloucester Square District are clustered around East Gloucester Square. The most architecturally significant of these are a house at 164 East Main Street (ca. 1830; Ass. #64-30); 178 East Main Street (ca. 1830; Ass. #64-62, used as a residence and store; and two cottages at 80 and 82 Mt. Pleasant Ave (ca. 1830s; Ass. #77-30 and 77-31), which may have been moved from other locations for later development.

Most of the district's Georgian and Federal period buildings are traditional in form and plan, with simple detailing concentrated around the main doorway.

Among the most interesting architectural developments of this era was the tentative introduction of the Greek Revival style. The best of these is the Emmanuel Wonson House (161 East Main Street, ca. 1825; Ass. #63-55), a substantial house with strong Greek Revival trim but a conservative southward

(continued)

United States Department of the Interior
National Park Service

National Register of Historic Places
Continuation Sheet

East Gloucester Square District
Gloucester (Essex County)
Massachusetts

Section number 8 Page 4

orientation and asymmetrical facade. It is said to have been built for (and possibly by) Emanuel Wonson, a carpenter. An early adherent of the style, Wonson may have been responsible for a building a large portion of the district's prominent Greek Revival-period development.

Prominence and Prosperity of the Fisheries, ca. 1830-1945

By the mid-point of the 19th century, economic and architectural development were clearly beginning to boom in the East Gloucester Square District. By 1851, East Main Street had been pushed eastward of the Square, and the waterfront near the Square now contained three major wharves. From north to south, these were Benjamin Parsons & Co.'s wharf (approximately the site of the present cold storage plant at 159 East Main Street), John Wonson's wharf, and-- replacing Giles & Wonson-- Samuel Wonson & Sons' greatly expanded wharf and fish flakes (at today's Pirate's Lane). All three fisheries also maintained stores near their wharves. The East Gloucester Ferry sailed from Duncan's Point to Robinson's Landing.

By about 1860, East Gloucester's population of about 1000 is said to have occupied about 130 homes, "snug clapboard houses strung along the harbor road, bunched in the village around the Square" (Garland, Eastern Point: 74). The greatest distinction of this population was that an overwhelming majority of the residents was directly connected with the fishing industry. In 1860, for example, 70% of the men were described as fishermen, and the professions of another 14 were either fish dealer or fishing business. Five men-- among them Daniel Webb Hillier at 62 Mt. Pleasant Ave. (Ass. #77-15)- hung on as farmers, although not all resided within the East Gloucester Square District.

For the rest of the 19th century, the East Gloucester shore was lined with wharves, fish houses, sail lofts, workshops, and flakeyards, most heavily concentrated at Wonson's Wharf (Ass. #63-48) and, to the south, Reed & Gamage (Beacon Marine Complex, 211 East Main Street, Ass. #79-2) and John F. Wonson & Co. (233-37 East Main Street, Ass. #79-6, 7, 8). Granite seawalls and remains of wood wharves/piers from this period survive along most of the length of the East Gloucester District's waterfront.

The beginning of Gloucester's commercial halibut fishing on the rich grounds of Georges Bank is generally attributed to Capt. John Fletcher Wonson (1802-1867), who was known as "one of the most able and careful skippers among those of the olden times" (Procter: 77). Wonson made the first planned halibut trip to Georges Bank on the schooner Nautilus in 1830. Although the venture was only minimally successful (20 fish caught), demand for halibut caught on, aided by the opening of new markets with the arrival of the railroad in Gloucester in 1847.

John Fletcher Wonson also is said to be the first to sail a ship called a "smack," which was outfitted with watertight bulkheads in the midsection for carrying live fish back to market. The first smacks-- the Mount Vernon and the Forest-- were built for Giles & Wonson, but the practice was short-lived due to the advent of refrigeration.

(continued)

United States Department of the Interior
National Park ServiceNational Register of Historic Places
Continuation SheetEast Gloucester Square District
Gloucester (Essex County)
MassachusettsSection number 8 Page 5

Thus began a period of substantial prosperity for East Gloucester, which lasted through the early 20th century.

"The be-all and end-all... was fishing. East Gloucester, and Rocky Neck, with the only open shore left, were caught up in the fever. Samuel Wonson and Sons, successors to Giles & Wonson, were said to be the biggest fishing firm in the whole country. They hired hundreds of hands ashore and afloat and sent a fleet of close to fifty of the old square-stern vessels and a few of the clipper schooners that were becoming popular off to the banks from Georges to Grand, handling for cod, haddock and halibut and jigging for the mackerel east as far as Labrador in the summer and fall. The fleets of John F. Wonson and William Parsons 2nd & Company added to the restless energy which had awakened this side of the Harbor. Back of the prickle of spars, acres of salt fish dried in the pungent flake yards." (Garland, Eastern Point: 74)

The mid to late 19th century fisheries were largely continuations of the earlier firms by younger family members-- particularly of the Wonson family, who settled almost exclusively in East Gloucester and Rocky Neck and figured prominently in the development of these neighborhoods.

When Giles & Wonson became Samuel Wonson & Sons, it was owned by Samuel Wonson, brother of John Fletcher Wonson. Samuel G. Wonson 3d (ca. 1818-1895) later engaged in the business with his brothers George F. and William S. under the name of George F. Wonson & Brothers before starting his own company. An obituary describes Samuel G. the 3d as

"(F)or many years one of the leading fish packers of the city... He was a man of generous impulses, of honest business habits, and was among the last representatives of the fish dealers of the olden time, before the industry had assumed its present gigantic proportions." (CAHA Vertical File: "Wonson Family," obituary)

Capt. John Fletcher Wonson sailed for his father's firm (Giles & Wonson), along with his brothers Samuel and Addison, before opening his own firm. John F. Wonson & Co. operated a fleet of 20 schooners for 50 years during the mid-19th century (ca. 1830-80), fishing from Delaware to Greenland. Rapid growth in the 1850s and 60s probably led the company to move its operations from its wharf and store just north of East Gloucester Square (occupied ca. 1830-50) to the newly opened shoreline south of the Square. The company's later set of offices and shops survives at 233-237 East Main Street (ca. 1850-70; Ass. #79-6, 7, 8), a rare example of wood frame industrial construction, built in a vernacular Greek Revival style.

Succeeding to Benjamin Parson's wharf was William Parsons 2d & Co., wholesale dealers in fish of all kinds, ship stores, and groceries. They also traded in salt (from at least 1872-1907), and at the Parson's wharf "towering salt barks and sometimes steamers from Sicily and Spain unloaded the stuff... that made Gloucester the salt-fish capital of the world." (Garland, Gloucester Guide: 81).

(continued)

United States Department of the Interior
National Park ServiceNational Register of Historic Places
Continuation SheetEast Gloucester Square District
Gloucester (Essex County)
MassachusettsSection number 8 Page 6

The East Gloucester Square District also harbored a number of other well-known fisheries in this period: William C. Wonson, fisheries and grocers, "smoked halibut, etc.", succeeding to John Wonson's wharf; Samuel Wonson & Sons (described above), with flakeyards and numerous associated buildings at Wonson's Wharf; and Gerring & Douglass, wholesale and retail dealers in dry and pickled fish, as well as grocers.

Founded in 1879, the firm of Reed & Gamage was known as producers, curers, and shippers of salt-water fish, primarily cod and mackerel. Among its extant buildings is the large and rambling, wood frame complex that is now the Beacon Marine Complex (211 East Main Street, mid 19th to early 20th centuries; Ass. #79-2, 21). In 1892 this property included "five large buildings, fully equipped with all appliances and conveniences" and a work force of more than 50 men (Pringle: 340). In 1906, Reed & Gamage and three other firms merged to form Gorton-Pew Fisheries. Although the plant here continued in operation, company headquarters were now located outside of the district.

Docked at the Reed & Gamage/Beacon Marine site today is the schooner yacht Coronet (1885). In her early days, the vessel was reknowned for winning a cross-Atlantic race to Ireland (in 1887) and for making three voyages around the world and five around Cape Horn. The Coronet was acquired by a religious organization in 1905, and has since made several missionary voyages.

Ocean gillnetting was successfully re-introduced to Gloucester in 1910. Beginning from a wharf behind East Gloucester Square, Capt. Albert Arnold, his sons, and other fishermen from the Great Lakes eventually operated close to 45 vessels using this method of fishing.

A number of prominent fisheries-support businesses were located in the East Gloucester Square District during the late 19th and early 20th centuries. At the northern end of the district was Joseph Norwood's cod liver oil business on Norwood Court-- "When codfish was king the neighbors referred to it as 'Blubber Alley' in tolerant acknowledgment of the effusions." (Garland, Gloucester Guide: 80)

At the southern end of the district, near the intersection of Mt. Pleasant Ave. and East Main Street, were the wharf and several buildings for Isaac Patch's ice business (his large ice pond and other structures were located just outside the district boundaries, south of Mount Pleasant Ave.). Herbert and John Wennerberg's fresh water supply business (established in 1871) was located near the present-day 265 East Main Street (just north of the intersection with Mt. Pleasant Avenue; Ass. # 80-31). From here fresh water was pumped from a stone reservoir for delivery to the fishing fleet. Capt. John E. Wennerberg, ca. 1837-1914, worked as a master of square-riggers in his native Sweden, and as a fisherman in Gloucester before opening his water business in East Gloucester. No structures are known to remain in the District from Norwood's, Patch's, or the Wennerbergs' businesses.

Many smaller-scale, maritime-related tradesmen also occupied the East Gloucester Square District during the mid to late 19th century. City directories of this period contain numerous listings for the

(continued)

United States Department of the Interior
National Park ServiceNational Register of Historic Places
Continuation SheetEast Gloucester Square District
Gloucester (Essex County)
MassachusettsSection number 8 Page 7

blacksmiths, ship painters, sailmakers, spar makers, coopers, and shipwrights needed to support the fisheries.

Short-cutting the long overland route to downtown, ferry service between East Gloucester Square (at Robinson's Landing) and Duncan's Point was started in 1849, by Capt. John Wonson. The early dory service was succeeded by sailboats by 1851, and by small steam ferries by 1856. A 375-foot long, narrow pier for the steam vessels extended from Robinson's Landing at least for the last two decades of the 19th century. This water-borne convenience was shortly followed by stagecoach land service and, in 1890, by the electric trolley. Such transportation improvements enhanced commercial growth and encouraged residential development.

Commercial and institutional growth naturally accompanied the fisheries in the district. Amos A. Story's large-scale lumber business was housed on a wharf between Reed & Gamage and John F. Wonson Co. Smaller businesses are well-represented in the modest, wood frame commercial buildings surviving at East Gloucester Square and at the base of Mt. Pleasant Avenue, and in scattered storefronts within residential buildings.

Only three stores (all apparently affiliated with the Parsons and Wonson fisheries) are noted on the 1851 map. By 1873, however, at least a dozen businesses were located at East Gloucester Square, offering groceries, variety goods, fruit, confectionery, shoes, clothing, hairdressing, coal and wood, carpentry, and kitchen furnishings.

At East Gloucester Square, notable extant commercial buildings include four adjacent stores on the east side of the street-- from 150 to 158 East Main St. (all late 19th century; Ass. #63-9,10, 57, and 11)-- and two buildings on the west side-- 193-95 and 197 East Main St. (1892 and ca. 1880s, respectively; Ass. # 63-36, 37). Farther south towards Rocky Neck notable commercial structures survive at 273-75 and 277-79 East Main St. (both ca. 1900; Ass. # 80-34, 37).

A number of institutional buildings complemented this growth, although only a few examples remain today. The East Gloucester Baptist Church was established in 1861, although it had already erected a chapel on Chapel Street in 1858. A modern brick church building stands on the site today, but the handsome, Italianate-style Baptist Parsonage survives next door (28 Highland Street, 1880-84; Ass. #64-2).

The East Gloucester Universalist Church (153 East Main Street, 1886; Ass. #63-22) was built to house a parish organized in 1884; it was sold to the Methodist Episcopal Church in 1894. With its lively arrangement of forms, shapes, and textures, this building is one of the most striking examples of Queen Anne architecture in the city.

A school house is shown on Mount Pleasant Ave., just outside of the district, in 1851, but was replaced between 1851 and 1872 by the Point Grammar School on Plum Street and the Point School

(continued)

United States Department of the Interior
National Park ServiceNational Register of Historic Places
Continuation SheetEast Gloucester Square District
Gloucester (Essex County)
MassachusettsSection number 8 Page 8

on the corner of Davis and Chapel streets; the latter two structures no longer exist. Independent Hall (later the Young Ladies Society; no longer extant) and a post office were also located at East Gloucester Square, at this time.

The major civic structure of the District today is the East Gloucester Engine House (75 Mt. Pleasant Ave., 1873; Ass. #64-8), a wood frame building with striking classical detailing, constructed in 1873 by Orlando Garland. Taking advantage of a convenient hill-top location, the engine house was relocated from an unknown site by the harbor on East Main Street; the fire company was originally organized in 1832.

Residential architecture forms the most prevalent building type today, and by its numbers and quality is also the most distinctive. The Greek Revival and Italianate styles predominate in East Gloucester Square District houses and date largely from the 1850s through 1885.

Greek Revival style residences began to be built along the harbor and fairly quickly proceeded up to Mt. Pleasant Ave. A 1-1/2 story cottage form is common to houses of this period in the District, with two different styles of ornamentation that are characteristic of and virtually unique to the East Gloucester District: one has a door motif of broad architraves and corner-blocks, the other has lavishly applied acorn-motif dentils (a Gothic influence).

As late as 1872, most residential development was still clustered along East Main Street and East Gloucester Square, but construction was also moving up the hillside on Chapel, Highland, and Plum streets, with scattered development on Mount Pleasant Ave. as well. By 1884, the District was almost thoroughly built up as it is today, a process which was completed by 1900, with scattered exceptions. A large part of the land between East Main Street and Mt. Pleasant Avenue, and between Plum and Chapel streets, was owned by a few prosperous businessmen who also resided in the area, and subdivided numerous houselots for development.

Laid out by 1831, Highland Street is one of Gloucester's most extraordinary streetscapes, presenting an harmonious arrangement of high-quality, well-preserved buildings in a range of forms, styles, sizes, and siting. Greco-Gothic influences are most evident here in the lavish application of cross gables, acorn dentils, broad pilasters and entablatures; the street contains striking Italianate designs as well, usually on larger-scale houses.

Early residents of Highland Street were typically middle to upper-class business owners. Representative of this street are the following properties:

The Charles A. Reed House (8 Highland Street, 1884-90; Ass. #63-13) is a small yet elaborately detailed mansard house, built for a founder of one of Gloucester's leading fisheries, Reed & Gamage. Indicative of his business success, Reed's estate was worth a substantial \$83,000 at his death in 1916.

(continued)

United States Department of the Interior
National Park Service

National Register of Historic Places
Continuation Sheet

East Gloucester Square District
Gloucester (Essex County)
Massachusetts

Section number 8 Page 9

The William Parsons House (13 Highland Street, 1846-51; Ass. #64-24) was built for a merchant and principal in the prominent Gloucester fishery of William Parsons 2d & Co. The traditional Greek Revival style of this building is distinguished by its trabeated doorway, corner pilasters, and fully pedimented gable end.

The Henry S. Wonson House (17 Highland Street, 1840-51; Ass. #64-22) was built for the owner of the Union Store in East Gloucester Square, who was later a wood and coal dealer and grocer. This Greek Revival cottage is architecturally significant for its five circular oculi with carved wreath trim across the facade entablature-- the only example of such formal, classic ornamentation extant in the city.

The Frederick Gerring House (25 Highland Street, 1860-69; Ass. #64-19), is notable for its elegant combination of Greek, Gothic, and Italianate motifs (acorn-dentilled entablatures, pilasters, and cross-gables) within a small cottage. Gerring was a partner in the Gerring & Douglass fishery.

At the corner of Highland Street and Mt. Pleasant Avenue is the Charles H. Wonson House (32 Highland Street, 1884-99; Ass. #64-4). Wonson was a partner in William C. Wonson & Co., fishery and grocers, and in Herbert Wonson & Co.'s coal and wood business. He also served as an inspector of customs and a real estate investor, purchasing and subdividing the large lot adjacent to Mt. Pleasant between Highland and Chapel streets on which his own house is built.

Plum Street (Ass. # 64-31, 32, 33, 35, 46, 47, 48, 49, 50, 51, 53, 54, 55, 64) was laid out ca. 1848 by Samuel Wonson (the owner of a wharf and house at the base of this street) and was built up ca. 1850-70. Literally and figuratively parallel in development to Highland Street, Plum Street forms the working-class counterpoint to its neighbor. Where Highland Street tends to be eclectic, sophisticated, and elaborately detailed, housing mid- to upper-class residents, Plum Street is regular, simple, and sober, the home to large numbers of fishermen and laborers in the fishing industry. Largely intact today, Plum Street's modest homes are remarkably similar to each other in style, plan, and detail, largely influenced by Greco-Gothic and Italianate themes.

Italianate and a few Queen Anne style buildings filled in among the earlier structures throughout the East Gloucester District, and range from workers' housing to middle- and upper-class homes. The most notable of these include:

Caledonia Place (ca. 1884-94; Ass. #59-50), a trio of unadorned, 1-1/2 story duplexes, appears to have been built as speculative workers' housing by Adolph Voss, an inventor and dealer in labor-saving fishing devices. Voss's development made use of land previously occupied by a small pond and stream, and was conveniently located near Norwood Place, with its cod liver oil manufactory, and Gorton-Pew's facilities farther north at Cripple Cove (outside of the East Gloucester Square District's boundaries).

(continued)

United States Department of the Interior
National Park ServiceNational Register of Historic Places
Continuation SheetEast Gloucester Square District
Gloucester (Essex County)
MassachusettsSection number 8 Page 10

The Falt-Reed House (172-74 East Main Street, 1860-69; Ass. #64-59/60) is another example of the unusual duplex building type, elaborately detailed in a mix of Greek Revival, Gothic Revival, and Italianate styles. Throughout the 19th century, it was home to the original two families: Walter M. Falt, who was employed in the fisheries firm of Leighton & Co., and Mrs. John B. Reed, whose family included Charles Reed, founder of Reed & Gamage across the street.

183 East Main Street (1872-84; Ass. #63-34) was built for William C. Wonson, a shipwright who gained prominence as principal of William C. Wonson & Co. (established in 1861), a fishery and grocers business that bore his name and occupied a wharf near the house. Prominently located on East Gloucester Square (after the original homestead was moved to the rear of the lot; see 183 rear East Main Street), this richly detailed Queen Anne house exemplifies the burst of large scale, elaborate Victorian development in the district during the 1880s and 90s.

The original building documents for the Matthew Dedcovich House (283 East Main Street, 1854; Ass. #80-41) show that the house was built for Dedcovich, a ballast lighter (transferring goods between ship and shore), by housewright Charles Boynton. By 1870, Boynton had established a large and successful business downtown that dealt in wood, coal, and construction supplies (see Central Gloucester District Boundary Increase); housebuilding was then only a minor interest. Boynton may be responsible for the group of similar, acorn-dentilled Greek Revival cottages which are virtually exclusive to the East Gloucester Square District.

The David Robinson House (77 Mt. Pleasant Ave., ca. 1885; Ass. #64-7) is a stately Italianate villa. A prominent local citizen, Robinson was treasurer of the great Atlantic Halibut Co. on Duncan's Point, downtown. He was elected mayor of Gloucester in 1887 as the Temperance Republican candidate, and was renowned for resigning in 1888 after refusing to sign the aldermen's order to grant liquor licenses in the city.

Another in the group of spacious and elegant Italianate homes clustered at the intersection of Mt. Pleasant and Highland is the Joseph M. Parsons House (79 Mt. Pleasant Ave., 1872-73; Ass. #64-6). Parsons was clerk and eventually principal partner in William Parsons 2d & Co., wholesale fisheries. The Parsons were a large and established Gloucester family, of what was in the mid-19th century called "respectable stock" (Babson: 125).

Finally, a few of Gloucester's grandest and most unusual Victorian mansions are strung along Mt. Pleasant Ave. on Banner Hill, the homes of wealthy owners who often overlooked their businesses on East Main Street. The most notable of these include the eclectic Amos A. Story Houses and Garage at 113-A and 115-B Mt. Pleasant Ave. (1884-99 and 1872-84; Ass. #78-31, 78-29). A ship's carpenter in 1860, Amos A. Story (1826-1911) proceeded to develop a prosperous lumber business at the foot of Banner Hill. In 1899 the houses and business were connected by a long, steep stairway down the hillside.

(continued)

United States Department of the Interior
National Park ServiceNational Register of Historic Places
Continuation SheetEast Gloucester Square District
Gloucester (Essex County)
MassachusettsSection number 8 Page 11

Nearby is the Roger W. Wonson House (121 Mt. Pleasant Ave., 1860-69; Ass. #78-24), built for one of the principal partners in John F. Wonson & Co. (see also the firm's headquarters at 233-237 East Main Street). This elegant Italianate house is architecturally distinguished by its villa form, high-style detailing (including a flush-boarded belvedere), and estate-like setting.

The city-wide decline of the fishing industry that began after World War I affected East Gloucester as well. Some of the more dramatic moments along the district's waterfront in the first half of the 20th century came during Prohibition, when a Coast Guard base housed on Parson's wharf was used for the pursuit of coastal rum-runners.

Fortunately for the East Gloucester Square District, summer visitors and artists (see Summer Resort and Artist Communities Contexts) provided new economic vitality. The gallery of the North Shore Arts Association, for example (7 Pirates Lane, ca. 1885; Ass. #63-47), occupies a wood-frame warehouse on the old Wonson's Wharf that was built as a barn on Plum Street and moved to the site by Thomas E. Reed, who used it as a machine and paint shop and storage for his freight-handling business (see 5 Pirates Lane, below). The North Shore Arts Association bought the building from Reed in 1922.

Many of the district's industrial buildings have been demolished, and for the last half century the waterfront has served mostly pleasure craft. Three active boat yards remain. The most historically and architecturally significant of these is the Beacon Marine Complex (211 East Main Street, mid 19th to early 20th century; Ass. #79-2), which contains buildings formerly occupied by the Reed & Gamage plant. The 19th century schooner Coronet, among other larger vessels, continues to tie up here.

At Wonson's Wharf, behind the North Shore Arts Association, a number of pleasure boats tie up at an annex of Brown's Boat Yard, whose main facility is located just to the north of the district boundaries. Finally, a small boat yard and shop are located at the end of Norwood Court (6 Norwood Court, ca. 1900 to mid 20th century; Ass. #59-91), providing storage and dock space for both lobster boats and pleasure craft.

Two notable early 20th century buildings survive in the district, one at East Gloucester Square and one at the southern end of the district. The large Shingle Style building at 5 Pirates Lane (ca. 1905; Ass. #63-44) is now a largely residential condominium, but was apparently built as a warehouse and office for Thomas E. Reed's freight-handling business on Wonson's Wharf (see North Shore Arts Association, above).

Reed's business included loading and unloading vessels and hauling freight from the train depot and other locations around town. The company's maritime connections were strong, however, as Reed operated three steam lighters for heavy transportation in the harbor (the Abbott Coffin, the Eagle, and the Philip), which were known for their work off-loading cargo from the huge salt steamers that

(continued)

United States Department of the Interior
National Park ServiceNational Register of Historic Places
Continuation SheetEast Gloucester Square District
Gloucester (Essex County)
MassachusettsSection number 8 Page 12

frequented the city. At its peak, the company owned 120 horses and employed 150 men.

Changing with the times, Reed offered an Eastern Point & Bass Rocks Baggage Express, which apparently focused on the area's new summer colonies (see Summer Resorts Context). Eventually, he also developed a well-known motor trucking business, the Boston & Gloucester Express. After Reed died in 1939, 5 Reed's Lane was converted into artists' studios and then apartments.

The Gloucester Stage Co. (267 East Main Street, ca. 1910s-20s; Ass. #80-32) occupies a low, brick commercial building that originally housed the Twin Light Garage. During the mid 20th century, the structure was used by Gorton's of Gloucester (successor to Gorton-Pew); it now houses a theater.

With the exceptions of the massive concrete cold storage facility at 159 East Main Street (ca. 1970) and a small cluster of residential infill on Smith's Cove-- both on the harbor's edge-- very little new construction interrupts the cohesive historic character of the East Gloucester Square District. The integrity and variety of the District are among its most impressive characteristics today-- an unusual mix of building types, styles, sizes, and socio-economic classes held together by consistent quality and strong physical and visual relationships to the water.

Archaeological Significance

This district contains a mixture of domestic, commercial, and industrial sites related to maritime activities in the village. Archaeological resources on individual properties, when combined as a district, can address larger questions about the cycles of change in the maritime economy, as well as specific research topics concerning ethnicity, foodways, and relative economic status in a New England fishing village.

Few eighteenth- and early nineteenth-century structures are in the district; the three most important examples appear to have undergone extensive architectural and landscape modifications that may limit their potential to contain intact archaeological resources (Smith, Griffin and Douglass Houses, all on East Main Street. Houses with larger yards, primarily of Greek Revival style, offer more potential; the William E. Wonson House (183 R East Main Street), retains adequate space around the house itself for resources like trash pits, earlier structures, and evidence of landscaping. The hypothesized major renovation of the house (ca. 1840) suggest that evidence about the evolution of the structure may still survive archaeologically.

Archaeological resources in the later houses of the elite may offer insight into the material culture of families who controlled the waterfront. Among these are the George Douglass House (27 Highland Street) and the William C. Wonson House (183 East Main Street). Although archaeological features may have a relatively low level of visibility for these types of properties, they probably survive in the form of privies, wells and other trash scatters located near the rear property lines.

(continued)

United States Department of the Interior
National Park Service

National Register of Historic Places
Continuation Sheet

East Gloucester Square District
Gloucester (Essex County)
Massachusetts

Section number 8, 9 Page 13, 1

Among the potentially significant industrial sites are the John F. Wonson Company Complex (233-37 East Main Street), which retains granite-lined wharves as well as a complex of fish houses and sheds along the surface of the wharves. Similarly, the wharves themselves (Wonson's Wharf and Parson's Wharf) can address questions about the technology and development of these important maritime support structures.

(end)

9. MAJOR BIBLIOGRAPHICAL REFERENCES

Personal conversation with Ann Clark (descendant of Thomas E. Reed), 3 January 1995.

Garland, Joseph E. Eastern Point. Peterborough, NH: Noone House, 1971.

Garland, Joseph E. The Gloucester Guide. Rockport, Mass.: Protean Press, 1990.

Babson, John J. History of Gloucester. Gloucester, Mass. Peter Smith, 1972.

Cape Ann Historical Association, Vertical File: "North Shore Arts Association Articles"

City Directories, 1899-1942

Copeland, Melvin T. and Elliott C. Rogers. The Saga of Cape Ann. Freeport, Maine, The Bond Wheelwright Co., 1960.

Maps and Atlases: 1831 (Mason), 1834/35 (Mason), 1851 (Walling), 1872 (DeBeers), ca. 1876-84 (Franklin Lith.), 1884 (Hopkins), 1899 (Stadly)

Mass. Historical Commission. Inventory of the Historic Assets of the Commonwealth.

___ Pringle, James R. Souvenir History of Gloucester, Mass. 1623-1892. Published by the author, 1892.

Procter, George H. The Fishermen's Memorial & Record Book. Gloucester, Mass.: Procter Brothers, 1873.

(end)

United States Department of the Interior
National Park ServiceNational Register of Historic Places
Continuation SheetEast Gloucester Square District
Gloucester (Essex County)
MassachusettsSection number 10 Page 1**10. GEOGRAPHICAL DATA**Verbal Boundary Description:

Please refer to the attached City of Gloucester Assessor's Maps: Scale 1" = 40. The district boundaries follow current property lines as drawn on those maps (#s 59, 63, 64, 77, 78, 79, 80, 131).

Verbal Boundary Justification:

Boundaries for the East Gloucester Square Historic District are based on the extent of development during the period of significance (ca. 1700-1945) and current levels of integrity. Recognizing the evolutionary nature of marine industrial and commercial properties, integrity are lower than for residential or institutional properties. Decisions based on these factors yield a district that encompasses the linear mixed-use spine of East Main Street which skirts the east side of Gloucester Harbor between the topographical brackets of Rocky Neck (S) and Parson's Point/Wharf (N), and a compact residential area centered on Highland and Plum Streets extending up and away (E) from the harbor to the ridge traversed by Mount Pleasant Avenue.

Specifically, the north boundary on East Main Street encompasses the houses and wharves of Norwood Court and the mid-19th century Vinal McCaleb House (east side of street), and the double workers cottage of Caledonia Place (west side of street) but stops short of a modern marine/commercial complex (E) and a modern gas station (W); historic resources beyond this point have generally experienced major alterations. The major intrusion of the modern O'Donnell-Usen fish processing plant is included because it occupies the historically important Parson's Point/Wharf whose origins and character are revealed in the mid-19th century granite seawalls that remain intact along its perimeter. Elsewhere, the northern boundary excludes Chapel Street which achieved only spotty development during the period of significance, and is now characterized primarily by a mix of altered historic, and post-World War II dwellings; a modern brick apartment house is especially at odds with the historic character, scale, and materials of the district. The well detailed and preserved Italianate style house at 41 Chapel Street, at Mount Pleasant Avenue is an exception to this general rule, and is thus included in the district.

The southern boundary on East Main Street stops where it abuts the proposed Rocky Neck National Register District, and where East Main Street turns to Eastern Point Boulevard with its focus on turn-of-the-century summer resort development. The well detailed and preserved Greek Revival style cottage at 4 Eastern Point Boulevard, at its junction with East Main Street, is an exception to this general rule, and is thus included in the district.

The Eastern boundary is restricted to a small area at the intersection of Mt. Pleasant Avenue and Highland Street, reflecting the fact that alterations and post-World War II intrusions predominate in other areas. Two estate parcels at 115B Mount Pleasant Avenue and 121 Mount Pleasant Avenue

(continued)

**United States Department of the Interior
National Park Service**

National Register of Historic Places Continuation Sheet

**East Gloucester Square District
Gloucester (Essex County)
Massachusetts**

Section number 10 **Page** 2

which extend through to East Main Street and a third containing a mid-19th century house at the intersection of East Main Street, are exceptions to this general rule, and are thus included in the district.

The Western boundary follows the low water line of Gloucester Harbor to include the buildings and structures related to the primary maritime industries.

(end)

**EAST GLOUCESTER SQUARE DISTRICT
GLOUCESTER, (ESSEX COUNTY), MASSACHUSETTS
DISTRICT DATA SHEET**

Ass.#	INV.#	STREET ADDRESS	PROPERTY NAME	DATE	ARCHITECTURAL STYLE/Form	STATUS
59-50	n/a	5-7 Caledonia Place	Double Workers House	post-1884	Queen Anne (side gable)	C/B
59-50	n/a	6-8 Caledonia Place	Double Workers House	post-1884	Queen Anne (side gable)	C/B
59-50	n/a	10-12 Caledonia Place	Double Workers House	post-1884	Queen Anne (side gable)	C/B
64-9	n/a	41 Chapel Street	Benjamin Robinson House garage	ca. 1870s ca. 1990	Italianate (gable end) n/a	C/B NC/B
59-10	n/a	5 Davis Street	J. Anderson House	ca. 1850	Greek Revival (half house)	C/B
64-13	139	6 Davis Street	David Marble House	1851-1860	Greek Revival (five bay)	C/B
64-14	n/a	8 Davis Street	M. Peterson House shed	ca. 1890 ca. 1960	Queen Anne (gable end) n/a	C/B NC/B
64-16	n/a	9 Davis Street	W. Brown House	ca. 1880	Italianate (gable end)	C/B
64-15	n/a	10 Davis Street	J. Douglass House	ca. 1850	Greek Revival (five bay)	C/B
59-9	n/a	11 Davis Street	H. Saulnear House garage	ca. 1870s ca. 1930	Italianate (gable end) n/a	C/B C/B
59-49	n/a	126 East Main Street	Adolf Vose Store	ca. 1890	Italianate (Commercial)	C/B
59-48	n/a	128 East Main Street	S. A. Rowe House	ca. 1870	Italianate (gable end)	C/B
59-47	145	130 East Main Street	Griffin House	1730	Georgian (center chimney)	C/B
59-46	n/a	132 East Main Street	Douglass House	ca. 1890	Queen Anne (major alts)	NC/B
59-45	n/a	134 East Main Street	Samuel R. Crane House	ca. 1870	Italianate (L-plan)	C/B
59-44	n/a	same	Garage	ca. 1930	n/a	C/B

**EAST GLOUCESTER SQUARE DISTRICT
GLOUCESTER, (ESSEX COUNTY), MASSACHUSETTS
DISTRICT DATA SHEET**

Ass.#	INV.#	STREET ADDRESS	PROPERTY NAME	DATE	ARCHITECTURAL STYLE/Form	STATUS
59-45	n/a	134 East Main Street	Samuel R. Crane House	ca. 1870	Italianate (L-plan)	C/B
59-44	n/a	same	Garage	ca. 1930	n/a	C/B
63-3	146	136 East Main Street	Charles Marston House	1869-73	Italianate (gable end)	C/B
			shed	M 20th cen.	n/a	NC/B
			granite curbing	ca. 1870	n/a	C/St
63-4	n/a	138 East Main Street	vacant lot	n/a	n/a	V
59-88	146	139 East Main Street	Vinal McCaleb House	1869-72	Greek Revival (five bay)	C/B
			garage	ca. 1930	n/a	C/B
63-5	n/a	140 East Main Street	H.F. Douglass House	ca. 1890	Queen Anne (gable end)	C/B
			garage	ca. 1930	n/a	C/B
63-6	n/a	142 East Main Street	J.F. Wonson House	ca. 1880	Italianate	C/B
			granite curbing	ca. 1880	n/a	C/St
59-95	n/a	145 East Main Street	Tarr & Noyes House	ca. 1850	Late Federal (half house)	C/B
			granite retaining wall	ca. 1850	n/a	C/St
			shed	ca. 1970	n/a	NC/B
59-94	n/a	145R East Main Street	Tarr & Noyes House	ca. 1890	Queen Anne (major alts)	NC/B
59-92	n/a	145R East Main Street	House	ca. 1890	Queen Anne (major alts)	NC/B
63-7	n/a	146 East Main Street	F.G. Wonson House	ca. 1880	Italianate (five bay)	C/B
			granite curbing	ca. 1880	n/a	C/St
63-19	n/a	147 East Main Street	George Lish House	ca. 1830	Federal (major alts)	NC/B
63-54	n/a	147Ra East Main Street	Vacant	n/a	n/a	V

**EAST GLOUCESTER SQUARE DISTRICT
GLOUCESTER, (ESSEX COUNTY), MASSACHUSETTS
DISTRICT DATA SHEET**

<u>Ass.#</u>	<u>INV.#</u>	<u>STREET ADDRESS</u>	<u>PROPERTY NAME</u>	<u>DATE</u>	<u>ARCHITECTURAL STYLE/Form</u>	<u>STATUS</u>
63-16	n/a	147Rb East Main Street	House	M 20th cen.	Modern	NC/B
63-20	n/a	149Ra East Main Street	House	M 20th cen.	Modern	NC/B
63-18	n/a	149Rb East Main Street	Vacant	n/a	n/a	V
63-8	148	148 East Main Street	William Lane House	1851-63	Greek Revival (five bay)	C/B
63-21	n/a	149 East Main Street	Tarr House	ca. 1880	Queen Anne (major alts)	NC/B
63-9	n/a	150-152 East Main St.	Store (double)	L 19th cen.	Italianate	C/B
63-22	149	153 East Main Street	The Church	1886	Queen Anne	C/B
63-23	n/a	153R East Main Street	House	M 20th cen.	Modern	NC/B
63-10	n/a	154 East Main Street	Store	ca. 1900	Commercial (gable end)	C/B
63-24	n/a	155 East Main Street	Parsons House	ca. 1850	Greek Revival (five bay)	C/B
63-57	n/a	156 East Main Street	Store (E. Glouc. Variety)	ca. 1880	Commercial (gable end)	C/B
63-25	n/a	157 East Main Street	vacant	n/a	n/a	V
63-11	n/a	158 East Main Street	Store (Pirate Cove Market)	ca. 1880	Commercial (gable end)	C/B
63-11	n/a	158R East Main Street	House garage	L 19th cen. ca. 1950	Queen Anne (gable end) n/a	C/B NC/B
63-11	n/a	158R East Main Street	House	L 19th cen.	Queen Anne (five bay)	C/B
63-26, 27	n/a	159 East Main Street	O'Donnell-Usen Freezer Parson's Wharf (granite)	ca. 1970 M-L 19th	Modern n/a	NC/B C/St

**EAST GLOUCESTER SQUARE DISTRICT
GLOUCESTER, (ESSEX COUNTY), MASSACHUSETTS
DISTRICT DATA SHEET**

Ass.#	INV.#	STREET ADDRESS	PROPERTY NAME	DATE	ARCHITECTURAL STYLE/Form	STATUS
64-29	n/a	160 East Main Street	House granite retaining wall	ca. 1860 ca. 1860	Italianate (five bay) n/a	C/B C/St
63-55	150	161 East Main Street	Emanuel Wonson House	1825	Greek Revival (major alts)	C/B
64-30	n/a	164 East Main Street	House random ashlar ret. wall	ca. 1830 ca. 1830	Federal (five bay) n/a	C/B C/St
64-57	n/a	166 East Main Street	House random ashlar ret. wall	1830 ca. 1830	L. Federal cottage (five bay) n/a	C/B C/St
63-28	n/a	167 East Main Street	House	ca. 1870	Italianate (four bay)	C/B
63-29	n/a	169 East Main Street	Store	ca. 1880	Italianate	C/B
63-31	n/a	169Ra	Vacant	n/a	n/a	V
63-32	n/a	169Rb East Main Street	William Wonson Wharf	M-L 19th c.	n/a	C/St
64-58	151	170 East Main Street	Douglass House granite retaining wall	1730-90 ca. 1840	Georgian cottage (five bay) n/a	C/B C/St
64-58	n/a	170 East Main Street	garage	ca. 1930	n/a (rusticated conc. block)	C/B
63-30	n/a	171 East Main Street	Store shed	M 20th cen. M 20th cen.	Modern (altered) n/a	NC/B NC/B
64-59/60	152	172-74 East Main St.	Falt-Reed House granite retaining wall	1860-69 ca. 1860	Greek/Gothic/Italianate n/a	C/B C/St
64-61	n/a	176 East Main Street	House random ashlar ret. wall	ca. 1850 ca. 1850	Greek Revival (five bay) n/a	C/B C/St

**EAST GLOUCESTER SQUARE DISTRICT
GLOUCESTER, (ESSEX COUNTY), MASSACHUSETTS
DISTRICT DATA SHEET**

<u>Ass.#</u>	<u>INV.#</u>	<u>STREET ADDRESS</u>	<u>PROPERTY NAME</u>	<u>DATE</u>	<u>ARCHITECTURAL STYLE/Form</u>	<u>STATUS</u>
64-62	n/a	178 East Main Street	Store	ca. 1830	Federal (five bay; rear wall)	C/B
64-63	153	182 East Main Street	Jeremiah Coas House granite curbing garage	1830-50 ca. 1850 ca. 1950	Greek Revival (five bay) n/a	C/B C/St NC/B
63-34	154	183 East Main Street	William C. Wonson House garage	ca. 1880 ca. 1930	Queen Anne n/a	C/B C/B
63-33	155	183R East Main Street	William E. Wonson House shed	1730-90	Colonial	C/B
64-65	n/a	184 East Main Street	House house	ca. 1870 ca. 1970	Italianate Modern	C/B NC/B
63-35	n/a	187-189 East Main St.	Double-House	ca. 1860s	Italianate	C/B
78-36	n/a	188 East Main Street	Vacant	n/a	n/a	V
63-36	n/a	193-195 East Main St.	Store	1892	Italianate	C/B
63-37	n/a	197 East Main Street	House/Store	ca. 1880s	Italianate (gable end)	C/B
63-50	n/a	199 East Main Street	House granite seawall	ca. 1850 M-L 19th	Greek Revival Cottage (3 bay) n/a	C/B C/St
63-51	n/a	199 1/2 East Main St.	House granite seawall	L 19th cen. M-L 19th	Italianate (gable end) n/a	C/B C/St
79-19	n/a	200 East Main Street	Vacant	n/a	n/a	V

**EAST GLOUCESTER SQUARE DISTRICT
GLOUCESTER, (ESSEX COUNTY), MASSACHUSETTS
DISTRICT DATA SHEET**

Ass.#	INV.#	STREET ADDRESS	PROPERTY NAME	DATE	ARCHITECTURAL STYLE/Form	STATUS
63-52	n/a	201 East Main Street	House	ca. 1860s	Italianate (gable end)	C/B
			granite retaining wall	ca. 1860s	n/a	C/St
			granite seawall	M-L 19th	n/a	C/St
n/a	n/a	n/a	Robinson's Cove Causeway	M 19th cen.	n/a	C/St
79-1 63-48	938	East Main Street	Robinson's Cove/Landing	E 18th cen.n/aC/Si		
			Wonson's wharf/sea walls		M 19th cen.	n/aC/St
79-18	n/a	210 East Main Street	House	L 19th cen.	Italianate (alt)	C/B
			granite retaining wall	ca. 1860s	n/a	C/St
79-2	n/a	211 East Main Street	Reed & Gamage Fish Yard	L 19th cen.	Commercial/Industrial	C/B
			granite wharfs/piers/etc	M 19th cen.	n/a	C/St
			schooner Coronet	19th cen.	n/a	C/O
			filleting shed	L 19th cen.	n/a	C/B
			shed	ca. 1900	n/a	C/B
			shed	E 20th cen.	n/a	C/B
			crane	E 20th cen.	n/a	C/St
79-20	n/a	212 East Main Street	House	ca. 1980	Modern	NC/B
79-23	n/a	214 East Main Street	Vacant	n/a	n/a	V
79-16	n/a	East Main Street	Vacant	n/a	n/a	V
79-21	n/a	221A East Main Street	Vacant	n/a	n/a	V
80-8	n/a	226 East Main Street	House	ca. 1900	Colonial Rev. (Foursquare)	C/B

**EAST GLOUCESTER SQUARE DISTRICT
GLOUCESTER, (ESSEX COUNTY), MASSACHUSETTS
DISTRICT DATA SHEET**

Ass.#	INV.#	STREET ADDRESS	PROPERTY NAME	DATE	ARCHITECTURAL STYLE/Form	STATUS
79-22	n/a	227 East Main Street	Shop granite wharf gas tanks	ca. 1900 M-L 19th M 20th	Queen Anne (gable end) n/a n/a	C/B C/St NC/St
80-7	n/a	228 East Main Street	House	ca. 1870s	Italianate (three bay)	C/B
79-5	n/a	229 East Main Street	Building	M 20th cen.	Colonial Revival (brick)	NC/B
80-6	n/a	230 East Main Street	House granite retaining wall garage	ca. 1860s ca. 1860s M 20th cen.	Italianate (Cape) n/a n/a	C/B C/St NC/B
79-6,7,8	156	233-37 East Main St.	John F. Wonson Co. Store granite wharf shed (1) shed (2) shed (3) shed (4)	1851-72 M-L 19th ca. 1900 L 20th cen. L 19th cen. L 19th cen.	Greek Revival n/a n/a n/a n/a n/a	C/B C/St C/B NC/B C/B C/B
80-25	n/a	234 East Main Street	W. H. Cross House granite retaining wall	ca. 1890s L 19th cen.	Queen Anne (gable end) n/a	C/B C/St
80-24	n/a	236 East Main Street	J. W. Lund House	ca. 1860s	Italianate (gable end)	C/B
80-22, 23	n/a	238 East Main Street	Charles Stevenson House	ca. 1880	Ital/Queen Anne (gable end)	C/B
79-9	n/a	239 East Main Street	House	ca. 1920s	Colonial Revival	C/B
80-21	n/a	240 East Main Street	C. Rowe House	ca. 1860s	Greek Rev. (three bay cottage)	C/B
79-10	n/a	241-43 East Main St.	House granite seawall	ca. 1920s M-L 19th	Colonial Revival (cottage) n/a	C/B C/St

**EAST GLOUCESTER SQUARE DISTRICT
GLOUCESTER, (ESSEX COUNTY), MASSACHUSETTS
DISTRICT DATA SHEET**

<u>Ass.#</u>	<u>INV.#</u>	<u>STREET ADDRESS</u>	<u>PROPERTY NAME</u>	<u>DATE</u>	<u>ARCHITECTURAL STYLE/Form</u>	<u>STATUS</u>
80-20	n/a	242 East Main Street	G. L. Randall House shed	ca. 1860s M 20th cen.	Greek Rev. (three bay cottage) n/a	C/B NC/B
79-11	n/a	245 East Main Street	House cast iron fence granite seawall	ca. 1850 L 19th cen. M-L 19th	Greek Rev. (five bay cottage) n/a n/a	C/B C/St C/St
131-1	n/a	246 East Main Street	House	E 20th cen.	Craftsman	C/B
79-12	n/a	247 East Main Street	House granite seawall	1851-72 M-L 19th	Greek Revival (gable end) n/a	C/B C/St
131-2	n/a	248 East Main Street	House barn/garage	ca. 1850s 19th cen.	Greek Revival (five bay)	C/B C/B
79-13	n/a	249 East Main Street	House granite seawall	ca. 1900 M-L 19th	Colonial Revival Foursquare n/a	C/B C/St
131-3	n/a	250 East Main Street	House	19th	Federal (side gable)	C/B
79-14	n/a	251 Main Street	House	ca. 1900	Colonial Revival	NC/B
131-4	n/a	252 East Main Street	Daniel Gill House granite retaining wall	1851-72 M 19th cen.	Greek Revival (five bay) n/a	C/B C/St
79-15	n/a	253 East Main Street	Smith House granite seawall	1730-80 M-L 19th	Colonial (gambrel) n/a	C/B C/St
80-27	n/a	255 East Main Street	House garage (at street) granite seawall	ca. 1980s L 20th cen. M-L 19th	Modern n/a n/a	NC/B NC/B C/St

**EAST GLOUCESTER SQUARE DISTRICT
GLOUCESTER, (ESSEX COUNTY), MASSACHUSETTS
DISTRICT DATA SHEET**

<u>Ass.#</u>	<u>INV.#</u>	<u>STREET ADDRESS</u>	<u>PROPERTY NAME</u>	<u>DATE</u>	<u>ARCHITECTURAL STYLE/Form</u>	<u>STATUS</u>
80-28	n/a	257 East Main Street	House shed granite seawall	L 20th cen. L 20th cen. M-L 19th	Colonial Revival n/a n/a	NC/B NC/B C/St
80-29	n/a	259 East Main Street	House cottage granite seawall	ca. 1880 ca. 1900 M-L 19th	Italianate (gable end) Queen Anne n/a	C/B C/B C/St
131-5	n/a	260 East Main Street	House	L 19th cen.	Italianate	C/B
80-30	160	261 East Main Street	William H. Wonson II Hs.e garage granite retaining wall	1860s M 20th cen. M 19th cen.	Greek/Gothic/Italianate n/a n/a	C/B NC/B C/St
131-6	n/a	262 East Main Street	House	L 19th cen.	Italianate (gable end)	C/B
80-50	n/a	263 East Main Street	House garage	L 20th cen. L 20th cen.	Modern n/a	NC/B NC/B
80-31	n/a	265 East Main Street	House granite retaining wall	ca. 1930s L 19th cen.	Colonial Revival n/a	C/B C/St
80-32	n/a	267 East Main Street	E. Gloucester Stage/ Gorton's	ca. 1910s	Colonial Revival Commercial	C/B
80-33	n/a	269 East Main Street	Store cottage	ca. 1870s ca. 1870s	Italianate Italianate (deteriorated)	C/B C/B
80-33	n/a	271 East Main Street	W. Stevens Store	ca. 1900	Queen Anne	C/B
80-34 80-35	n/a	273-75 East Main St.	Isaac Patch Store apartments	ca. 1900 ca. 1970s	Queen Anne (gable end) Modern (wood frame)	C/B NC/B

**EAST GLOUCESTER SQUARE DISTRICT
GLOUCESTER, (ESSEX COUNTY), MASSACHUSETTS
DISTRICT DATA SHEET**

<u>Ass.#</u>	<u>INV.#</u>	<u>STREET ADDRESS</u>	<u>PROPERTY NAME</u>	<u>DATE</u>	<u>ARCHITECTURAL STYLE/Form</u>	<u>STATUS</u>
80-37	n/a	277-79 East Main St.	Art Gallery	ca. 1900	Queen Anne (gable end)	C/B
			granite retaining wall	L 19th cen.	n/a	C/St
80-36	n/a	277R East Main Street	house	ca. 1970	Modern	NC/B
80-38	161	281 East Main Street	Daniel A. Gill House	1860s	Greek/Gothic/Italianate	C/B
			house	ca. 1920s	Craftsman	C/B
			granite retaining wall	M 19th cen.	n/a	C/St
80-39, 40	n/a	281R East Main Street	Vacant	n/a	n/a	V
80-41	162	283 East Main Street	Matthew Dedcovich House	1854	Greek Revival (five bay)	C/B
80-43, 44	n/a	283R East Main Street	Vacant	n/a	n/a	V
131-7	163	4 Eastern Point Road	James Coas House	1860-69	Greek Revival (five bay)	C/B
			shed	ca. 1960	n/a	NC/B
80-26	164	3 Gerring Road	George Wonson Jr. House	1854-72	Greek Revival (three bay)	C/B
80-5	165	4 Gerring Road	William S. Spurr House	1897-99	Colonial Revival	C/B
64-37	n/a	1 Highland Court	n/a	n/a	n/a	C/B
78-37	n/a	15 Highland Court	House	ca. 1930	Colonial Revival	C/B
			ashlar retaining wall	ca. 1930	n/a	C/St
64-28	n/a	5 Highland Street	House	ca. 1925	Dutch Colonial	C/B
			random ashlar ret. wall	ca. 1925	n/a	C/St
63-12	n/a	6 Highland Street	Samuel Haskell House	ca. 1870	Italianate (gable end)	C/B
			garage	ca. 1960	n/a	NC/B
			shed	ca. 1960	n/a	NC/B

**EAST GLOUCESTER SQUARE DISTRICT
GLOUCESTER, (ESSEX COUNTY), MASSACHUSETTS
DISTRICT DATA SHEET**

Ass.#	INV.#	STREET ADDRESS	PROPERTY NAME	DATE	ARCHITECTURAL STYLE/Form	STATUS
64-27	n/a	7 Highland Street	John W. Coffin House garage granite retaining wall	ca. 1850 ca. 1930 ca. 1850	Greek Revival (five-bay) n/a n/a	C/B C/B C/St
63-13	167	8 Highland Street	Charles Reed House granite retaining wall	1884-90 ca. 1880s	Second Empire n/a	C/B C/St
64-26	n/a	9 Highland Street	Charles Dagle House granite retaining wall	ca. 1860s ca. 1860s	Greek/Gothic Revival n/a	C/B C/St
63-14	n/a	10 Highland Street	Charles Story House granite retaining wall	ca. 1860s ca. 1860s	Italianate (gable end) n/a	C/B C/St
64-25	n/a	11 Highland Street	David Parsons House granite retaining wall	ca. 1870 ca. 1870	Italianate (gable end) n/a	C/B C/St
64-24	168	13 Highland Street	William Parsons House garage granite retaining wall	1846-51 ca. 1930 ca. 1850	Greek Revival (gable end) n/a n/a	C/B C/B C/St
63-15	n/a	14 Highland Street	Charles Story House	ca. 1860s	Italianate (five bay)	C/B
64-23	n/a	15 Highland Street	G. H. Martin House granite retaining wall	ca. 1880s ca. 1880s	Italianate (five bay) n/a	C/B C/St
59-1	n/a	16 Highland Street	House garage	c. 1930 c. 1930	Bungalow n/a	C/B C/B
64-22	169	17 Highland Street	Henry Wonson House	1840-51	Greek Revival (five bay)	C/B
59-7	n/a	18 Highland Street	C. Tarr House garage	ca. 1850 ca. 1930	Greek Revival (3 bay, 2 story) n/a	C/B C/B

**EAST GLOUCESTER SQUARE DISTRICT
GLOUCESTER, (ESSEX COUNTY), MASSACHUSETTS
DISTRICT DATA SHEET**

<u>Ass.#</u>	<u>INV.#</u>	<u>STREET ADDRESS</u>	<u>PROPERTY NAME</u>	<u>DATE</u>	<u>ARCHITECTURAL STYLE/Form</u>	<u>STATUS</u>
64-21	170	19 Highland Street	Samuel Wonson House	1851-69	Greek Revival (five bay)	C/B
59-8	n/a	20 Highland Street	Dr. Eveleth House barn/garage	ca. 1880 ca. 1880	Italianate n/a	C/B C/B
64-20	171	23 Highland Street	Stephen Martin House garage	1860s ca. 1930	Gr. Rev./Ital. (gable end) n/a	C/B C/B
64-17	n/a	24 Highland Street	M. Barnett House garage	ca. 1860s ca. 1930	Italianate/Gothic Revival n/a	C/B C/B
64-19	172	25 Highland Street	Frederick Gerring House granite retaining wall	1860s ca. 1860s	Greek/Gothic/Italianate n/a	C/B C/St
64-1	n/a	26 Highland Street	Charles Wonson Estate	ca. 1860s	Gr. Rev./Ital. (gable end)	C/B
64-18	173	27 Highland Street	George Douglass House	1884-85	Second Empire	C/B
64-2	174	28 Highland Street	Baptist Parsonage shed	1880-84 ca. 1960	Italianate (gable end) n/a	C/B NC/B
64-3	n/a	30 Highland Street	G. D. Saunders House granite retaining wall house	L 19th cen. L 19th ca. 1980	Italianate (gable end) n/a Garrison Colonial	C/B C/St NC/B
64-66	n/a	30R Highland Street	house	ca. 1900	Queen Anne (gable end)	C/B
64-4	175	32 Highland Street	Charles H. Wonson House granite garage granite retaining wall	1884-99 ca. 1930 ca. 1880s	Italianate (gable end) n/a n/a	C/B C/B C/St
64-38	176	37 Highland Street	Franklin A. Wonson House garage granite retaining wall	1851-55 ca. 1930 ca. 1850s	Italianate (gable end) n/a n/a	C/B C/B C/St

**EAST GLOUCESTER SQUARE DISTRICT
GLOUCESTER, (ESSEX COUNTY), MASSACHUSETTS
DISTRICT DATA SHEET**

<u>Ass.#</u>	<u>INV.#</u>	<u>STREET ADDRESS</u>	<u>PROPERTY NAME</u>	<u>DATE</u>	<u>ARCHITECTURAL STYLE/Form</u>	<u>STATUS</u>
77-15	178	62 Mt. Pleasant Ave.	Thomas Hillier House fieldstone wall cottage shed	1754 19th cen. E 20th cen. ca. 1970s	Georgian (five bay) n/a Craftsman n/a	C/B C/St C/B NC/B
77-16	n/a	64 Mt. Pleasant Ave.	Samuel G. Wonson House granite retaining wall cottage shed	ca. 1880s 19th cen. E 20th cen. E 20th cen.	Italianate (gable end) n/a Craftsman (Deteriorated) n/a	C/B C/St NC/B NC/B
77-21	n/a	68 Mt. Pleasant Ave.	A. R. Wonson House	ca. 1890s	Queen Anne (gable end)	C/B
77-22	n/a	72 Mt. Pleasant Ave.	S. F. Downs House	ca. 1890s	Queen Anne (gable end)	C/B
77-23	n/a	74 Mt. Pleasant Ave.	C. Martin House	ca. 1890s	Italianate (gable end)	C/B
64-8	179	75 Mt. Pleasant Ave.	E. Gloucester Engine House	1873	Italianate	C/B
64-7	180	77 Mt. Pleasant Ave.	David Robinson House granite curbing shed	ca. 1880s ca. 1880 ca. 1970	Italianate Villa n/a n/a	C/B C/St NC/B
77-24	n/a	78 Mt. Pleasant Ave.	House	ca. 1850	Late Federal (3 bay, 2 story)	C/B
64-6	181	79 Mt. Pleasant Ave.	Joseph M. Parsons House granite retaining wall	1872-73 ca. 1870s	Italianate (L-plan) n/a	C/B C/St
77-30	n/a	80 Mt. Pleasant Ave.	House	ca. 1840	Full Cape	C/B
64-5	n/a	81 Mt. Pleasant Ave.	George Sayward House granite retaining wall shed	ca. 1870s ca. 1870s ca. 1970	Italianate (gable end) n/a n/a	C/B C/St NC/B

**EAST GLOUCESTER SQUARE DISTRICT
GLOUCESTER, (ESSEX COUNTY), MASSACHUSETTS
DISTRICT DATA SHEET**

Ass.#	INV.#	STREET ADDRESS	PROPERTY NAME	DATE	ARCHITECTURAL STYLE/Form	STATUS
77-31	n/a	82 Mt. Pleasant Ave.	George M. Wonson House shed	ca. 1840 L 19th cen.	Late Federal (5 bay cottage) board & batten	C/B C/B
77-32	n/a	82R Mt. Pleasant Ave.	House garage	ca. 1920s ca. 1920s	Craftsman n/a	C/B C/B
78-31	182	113A Mt. Pleasant Ave.	Amos Story Family House	1884-89	Italianate/Second Empire	C/B
78-29	183	115B Mt. Pleasant Ave.	Amos A. Story House	1862-84	Italianate/Queen Anne	C/B
78-24	184	121 Mt. Pleasant Ave.	Roger Wonson House shed	1860s ca. 1970	Italianate (gable end) n/a	C/B NC/B
79-17	n/a	125 Mt. Pleasant Ave.	House granite wall garage	ca. 1850 M 19th cen. M 20th cen.	Greek Revival n/a n/a	C/B C/St NC/B
59-96	n/a	2 Norwood Court	House granite retaining wall	ca. 1870 M-L 19th	Italianate (gable end) n/a	C/B C/St
59-93			shed	E 20th cen.	n/a	C/B
59-89	n/a	3 Norwood Court	Vacant	n/a	n/a	V
59-90	n/a	5 Norwood Court	House shed	ca. 1860 M 20th cen.	Greek Revival (five bay) n/a	C/B NC/B
59-91	n/a	6 Norwood Court	Boat Shop (1) boat shop (2) shed (3) shed (4)	M 20th cen. c. 1900 M 20th cen. M 20th cen.	n/a (metal) n/a (wood frame) n/a n/a	NC/B C/B NC/B NC/B
63-44	n/a	5 Pirates Lane	Condominiums	E 20th cen.	Queen Anne	C/B

**EAST GLOUCESTER SQUARE DISTRICT
GLOUCESTER, (ESSEX COUNTY), MASSACHUSETTS
DISTRICT DATA SHEET**

Ass.#	INV.#	STREET ADDRESS	PROPERTY NAME	DATE	ARCHITECTURAL STYLE/Form	STATUS
63-43	n/a	Pirates Lane	Vacant	n/a	n/a	V
63-46	n/a	6 Pirates Lane	Boat Shop/Cottage	ca. 1900	Colonial Rev. (gambrel roof)	C/B
63-47	1337	7 Pirates Lane (also 197R East Main)	North Shore Arts Ass.	ca. 1885	Queen Anne (gable end)	C/B
63-38	n/a	1 Pirates Way	House	L 19th cen.	Italianate (gable end)	C/B
63-39	n/a	3 Pirates Way	House	L 19th cen.	Italianate (gable end)	C/B
63-40	n/a	5 Pirates Way	House shed	ca. 1900 M 20th cen.	Colonial Rev. (Foursquare) n/a	C/B NC/B
63-41	n/a	6 Pirates Way	House	L 19th cen.	Italianate cottage	C/B
64-31	Q	6 Plum Street	Crentin House granite retaining wall	1870-90 ca. 1870	Queen Anne (gable end) n/a	C/B C/ St
64-56	n/a	Plum Street	Vacant	n/a	n/a	V
64-55	Q	7 Plum Street	Ida F. Tarr House	1875-95	Italianate (gable end)	C/B
64-54	Q	9 Plum Street	George Gerring Jr. House garage	1840-60 ca. 1930	Greek Revival (five bay) n/a	C/B C/B
64-32	Q	10 Plum Street	Ella F. Varney House	1830-60	Greek Revival (gable end)	C/B
64-53	Q	11 Plum Street	C. Peterson House	1840-60	Greek Revival (five bay)	C/B
64-33	Q	12 Plum Street	S. C. Douglass House granite retaining wall garage	1875-95 ca. 1880 ca. 1930	Queen Anne (gable end) n/a n/a	C/B C/St C/B

**EAST GLOUCESTER SQUARE DISTRICT
GLOUCESTER, (ESSEX COUNTY), MASSACHUSETTS
DISTRICT DATA SHEET**

<u>Ass.#</u>	<u>INV.#</u>	<u>STREET ADDRESS</u>	<u>PROPERTY NAME</u>	<u>DATE</u>	<u>ARCHITECTURAL STYLE/Form</u>	<u>STATUS</u>
64-51	Q	15 Plum Street	E. Pingree House	1840-60	Greek Revival (gable end)	C/B
64-52	n/a	Plum Street (rear)	Vacant	n/a	n/a	V
64-64	Q	15B Plum Street	House garage	1875-95 ca. 1930	Italianate n/a	C/B C/B
64-49	Q	15A Plum Street	House	E 20th cen.	Queen Anne	C/B
64-50	Q	17 Plum Street	Douglass/Merchant House cobblestone ret. wall	1840-60 L 19th cen.	Greek Revival (five bay) n/a	C/B C/St
64-34	Q	Plum Street	Vacant (school site)	n/a	n/a	V
64-48	Q	19 Plum Street	M. K. Chambers House granite retaining wall	1850s ca. 1850s	Italianate/Gothic Revival n/a	C/B C/St
64-47	Q	21 Plum Street	Herbert McQuin House granite retaining wall	1840-60 ca. 1850	Greek Revival (five bay) n/a	C/B C/St
64-35	Q	22 Plum Street	G. Douglass House	1870-90	Greek Revival (five bay)	C/B
64-46	Q	25 Plum Street	J. S. McQuin House granite retaining wall	1840-60 ca. 1850	Greek Revival (five bay) n/a	C/B C/St

Resource Count

<u>Resource</u>	<u>Contributing</u>	<u>Non-contributing</u>	
Buildings	186	50	
Structures	66	1	
Sites	1	0	
Objects	1	0	
Totals	254	51	305

UNITED STATES DEPARTMENT OF THE INTERIOR
NATIONAL PARK SERVICE

NATIONAL REGISTER OF HISTORIC PLACES
EVALUATION/RETURN SHEET

REQUESTED ACTION: NOMINATION

PROPERTY East Gloucester Square Historic District
NAME:

MULTIPLE Gloucester MPS
NAME:

STATE & COUNTY: MASSACHUSETTS, Essex

DATE RECEIVED: 3/25/96 DATE OF PENDING LIST: 4/09/96
DATE OF 16TH DAY: 4/25/96 DATE OF 45TH DAY: 5/09/96
DATE OF WEEKLY LIST:

REFERENCE NUMBER: 96000471

NOMINATOR: STATE

REASONS FOR REVIEW:

APPEAL: N DATA PROBLEM: N LANDSCAPE: N LESS THAN 50 YEARS: N
OTHER: Y PDIL: N PERIOD: N PROGRAM UNAPPROVED: N
REQUEST: N SAMPLE: N SLR DRAFT: Y NATIONAL: N

COMMENT WAIVER: N

ACCEPT RETURN REJECT 4.26.96 DATE

ABSTRACT/SUMMARY COMMENTS:

Entered in the
National Register

RECOM./CRITERIA _____

REVIEWER _____ DISCIPLINE _____

TELEPHONE _____ DATE _____

DOCUMENTATION see attached comments Y/N see attached SLR Y/N



3-15 E Gloucester 10/93

(1)

(1)

Robinson's Cove area

E. Gloucester Sq. H.D.

Essex Co, MA

Candace Harkins

17 Stodd St, Belmont, MA

172-74 East Main St. facing SE from
Robinson's Landing



3-12 E. Gloucester 10/93

(2)

(2)

142 E. Main St.

E. Gloucester Sq. H.D.

Essex Co, MA

Candace Jenkins

17 Slade St, Belmont, MA

142 E. Main St, Lacey^{NE}



3

Gloucester 8/93
1-9 253 E. Main St.

E. Gloucester H.D.
Essex Co, MA

Candace Jenkins
17 Slade St, Belmont, MA
253 E. Main St. facing W



Gloucester 8/93
1-10 261 E. Main St.

(4)

(9)

E. Gloucester Sq. H.D.
Essex Co, MA

Candace Jenkins

17 Stade St, Belmont, MA

261 E. Main St. Facing W



Gloucester 8/93

1-12 283 + 281 E. Main St.

(5)

(5)

E. Gloucester H.D.

ESSEX CO, MA

283 + 281 E. Main St facing NW

Candace Jenkins

17 Slade St, Belmont, MA



3-7 E. Gloucester 10/93
24 Highland St.

(6)

(6)

E. Gloucester Sq. H.D.
Essex Co, MA

Candace Kulms
17 Slack St, Belmont, MA
24 Highland St. facing N



3-9 E. Gloucester 10/93

25 Highland St.

(7)

(7)

E. Gloucester Sq. H.O.

Essex Co, MA

Candace Jenkins

17 Stude St, Belmont, MA

25 Highland St facing S



3-B E. Gloucester 10/23
27 Highland St.



(8)

E. Gloucester Sq. H. D.
Essex Co, MA

Candace Jentler

17 Slade St, Belmont, MA
27 Highland St. facing NW



3-10 E. Gloucester 10/93
32 Highland St.

(9)

(9)

E. Gloucester Sq. H.D.
Essex Co, MA

Candace Statuat

17 Skide St, Belmont, MA

B 32 Highland St facing N



3-11 E. Gloucester 10/93
77 Mt. Pleasant Ave.

(10)

(10)

E. Gloucester Sq. H. D.
Essex Co, MA

Candace Jenkins

17 Slade St, Belmont, MA

77 Mt. Pleasant Ave facing SW



3-14 E. Gloucester 10/93
150-52 E. Main St.

(11)

(11)

E. Gloucester Sq. H.D.
Essex Co, Mass.

Candace Jenkins
17 Slade St, Belmont, MA
150-52 E. Main St Locing SE



BEACON MARINE BASIN

Signs & More

Gloucester 8/93

1-16 Beacon Marine

(12)

(12)

E. Gloucester Sq. H. D.

Essex Co, MA

Candace Jenkins

17 Slade St, Belmont, MA

211 E. Main St, Leed & Garage

Pacing A



Gloucester 8/93

1-15 Beacon Marine + Coronet

(13)

(13)

E. Gloucester Sq. H.D.

Essex Co, MA

Candace Jenkins

17 Stade St, Belmont, MA

211 E. Main St "Coronet"

facing N



Gloucester B/93

1-14 233-37 E. Main St.

Worcester Co. Struck

(14)

(14)

E. Gloucester Sq. H. O.

Essex Co, MA

Candace Sealums

17 Skid St, Belmont, MA

233-37 E. Main St. facing NE



Gloucester 6/93

1-11 269-97 E. Main St.

(15)

(15)

E. Gloucester Sq. H. D.

Essex Co, MA

Candace Jenkins

17 Skade St, Belmont, MA

277-97 E. Main St. Facing SW



Gloucester 8/93

(16)

(16)

1-17 Robinsons Landing / N. Shore Arts

E. Gloucester Sq. H.D.

Essex Co, MA

Candace Sealins

17 Slade St, Belmont, MA

Robinson Landing facing N



Gloucester B/F3

1-13 Smith Cove @ Rocky Neck

(17)

(17)

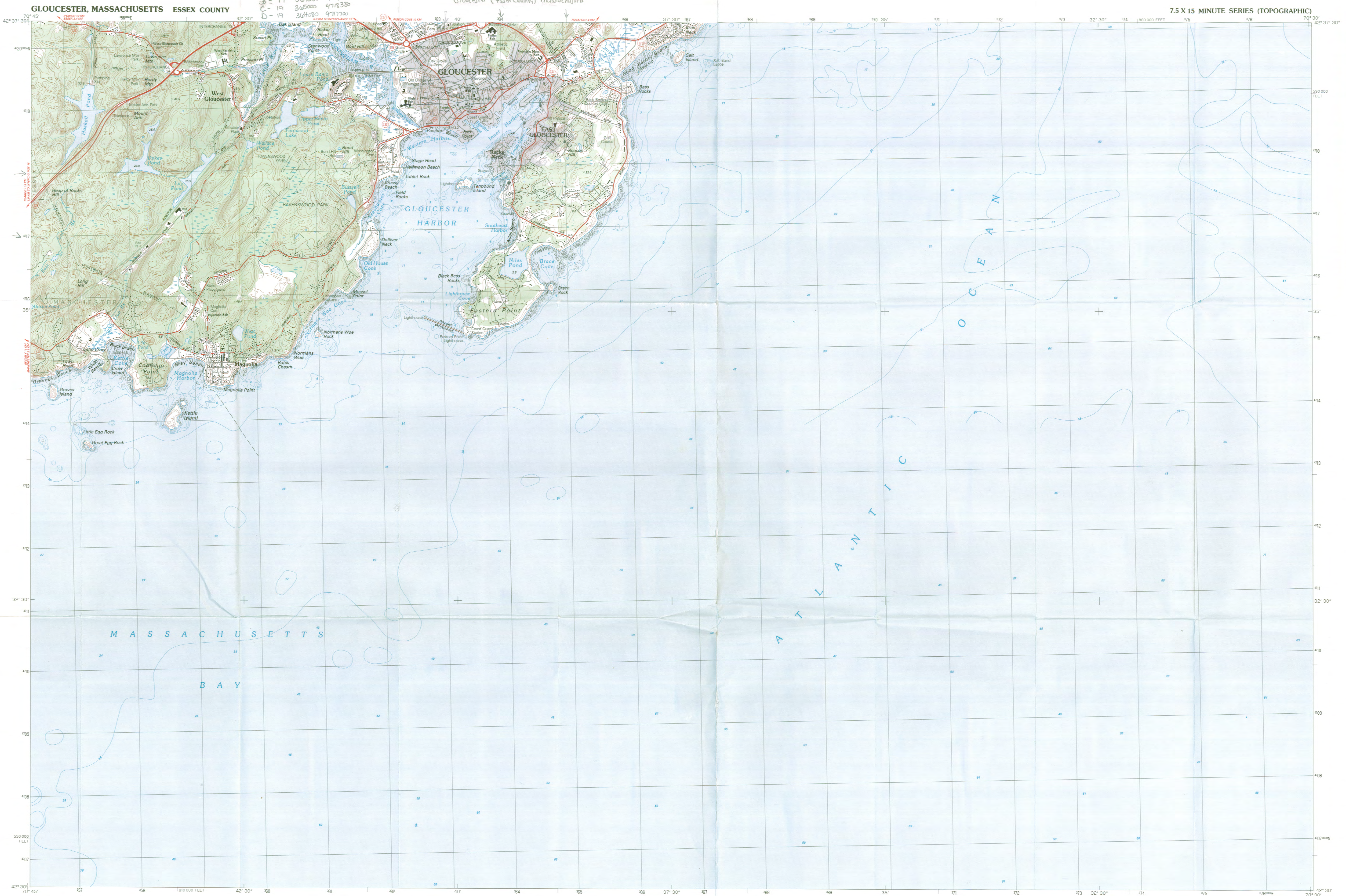
E. Gloucester Sq. H.D.

Essex Co, MA

Candace Jenkins

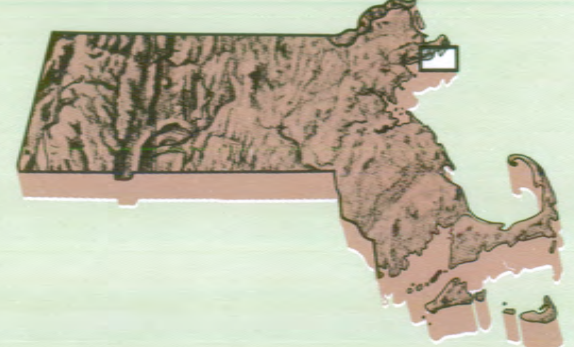
17 Slade St, Belmont, MA

Smith Cove facing NE



Gloucester MASSACHUSETTS

1:25 000-scale metric topographic map



7.5 X 15 MINUTE QUADRANGLE SHOWING

- Contours and elevations in meters
- Highways, roads and other manmade structures
- Water features
- Woodland areas
- Geographic names



GEOLOGICAL SURVEY

1984

Produced by the United States Geological Survey in cooperation with Massachusetts Department of Public Works. Control by USGS, NOS-NOAA, and Commonwealth of Massachusetts agencies. Compiled by photogrammetric methods from aerial photographs taken 1978. Field checked 1979. Map edited 1984. Supersedes Gloucester and Rockport 1:25,000-scale maps dated 1973. Selected hydrographic data compiled from NOS charts 13267 (1981), 13278 (1983), 13279 (1983), and 13281 (1982). This information is not intended for navigational purposes. Projection and 1000-meter grid zone 15. Universal Transverse Mercator. 10,000-foot grid ticks based on Massachusetts coordinate system, mainland zone. 1927 North American Datum. To place on the predicted-North American Datum 1983 move the projection lines 6 meters south and 42 meters west as shown by dashed corner ticks.

CONTOUR INTERVAL 3 METERS. NATIONAL GEODETIC VERTICAL DATUM OF 1929 CONTROL ELEVATIONS SHOWN TO THE NEAREST 0.1 METER. OTHER ELEVATIONS SHOWN TO THE NEAREST 0.5 METER. DEPTH CURVES AND SOUNDINGS IN METERS. DATUM IS MEAN LOW WATER. THE RELATIONSHIP BETWEEN THE APPROXIMATE LINE SHOWN BETWEEN THE TWO DATUMS IS VARIABLE. THE MEAN RANGE OF TIDE IS APPROXIMATELY 2.5 METERS. THIS MAP COMPLES WITH NATIONAL MAP ACCURACY STANDARDS.

Meters	Feet
1	3.2808
2	6.5617
3	9.8425
4	13.1234
5	16.4043
6	19.6852
7	22.9660
8	26.2469
9	29.5278
10	32.8084

To convert meters to feet multiply by 3.2808
To convert feet to meters multiply by 0.3048

UTM grid convergence (GM) at 1000 meters declination (MA) at center of map. Diagram is approximate.

ADJOINING MAPS	1	2	3
1 Ipswich	4	5	
2 Rockport	6	7	8
3 Salem			
4 Lynn			
5			
6			
7			
8			

FOR SALE BY U. S. GEOLOGICAL SURVEY RESTON, VIRGINIA 22092

Topographic Map Symbols

- Primary highway, hard surface
- Secondary highway, hard surface
- Light-duty road, hard or improved surface
- Unimproved road, trail
- Road marker: Interstate, U. S. State
- Railroad: standard gage; narrow gage
- Bridge: drawbridge
- Footbridge; overpass; underpass
- Build-up area: only selected landmark buildings shown
- House; barn; church; school; large structure
- Boundary: National, with monument; State; County, parish; Civil township, precinct, district; Incorporated city, village, town; National or State reservation; small park; Land grant with monument; forest section corner; U. S. public lands survey: range, township, section; Range, township, section line: location approximate
- Fence or field line
- Power transmission line, located tower
- Dam; dam with lock
- Cemetery; grave
- Campground; picnic area; U. S. location monument
- Windmill; water well; spring
- Mine shaft; prospect; adit or cave
- Control: horizontal station; vertical station; spot elevation
- Contours: index; intermediate; supplementary; depression
- Disturbed surface: strip mine, lava, sand
- Bathymetric contours: index; intermediate
- Perennial lake and stream; intermittent lake and stream
- Rapids, large and small; falls, large and small
- Submerged marsh; marsh; swamp
- Land subject to controlled inundation; woodland
- Scrub; mangrove
- Orchard; vineyard

A pamphlet describing topographic maps is available on request

59
NR Map 1

63
NR Map 2

59
NR Map 1

63
NR Map 2

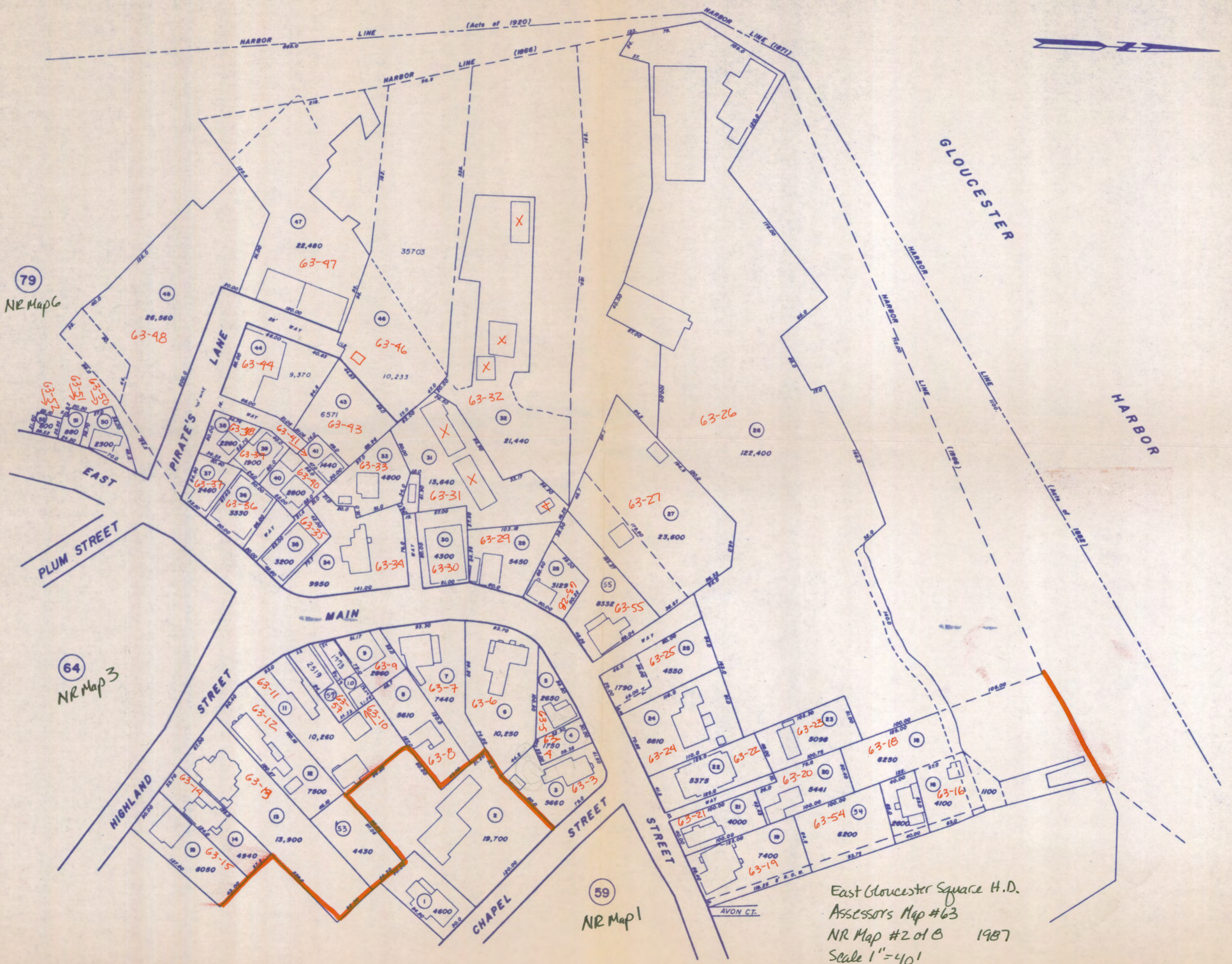
77
NR Map 4



East Gloucester Square H.D.
 Assessors Map #64 ca. 1987
 NR Map #3 of 8
 Scale 1" = 40'

SCALE 1" = 40'

FOR ASSESSMENT PURPOSES ONLY



79
NR Map 6

64
NR Map 3

59
NR Map 1

East Gloucester Square H.D.
Assessors Map #63
NR Map #2 of B 1987
Scale 1" = 40'

SCALE 1" = 40'

FOR ASSESSMENT PURPOSES ONLY

CITY OF GLOUCESTER, MASSACHUSETTS
SHEET NO. 63



80
NR Map 7

83

132

East Gloucester Square H.D.
Assessor's Map # 131 1987
NR Map # B of B
Scale: 1" = 40'

WONSON'S COVE

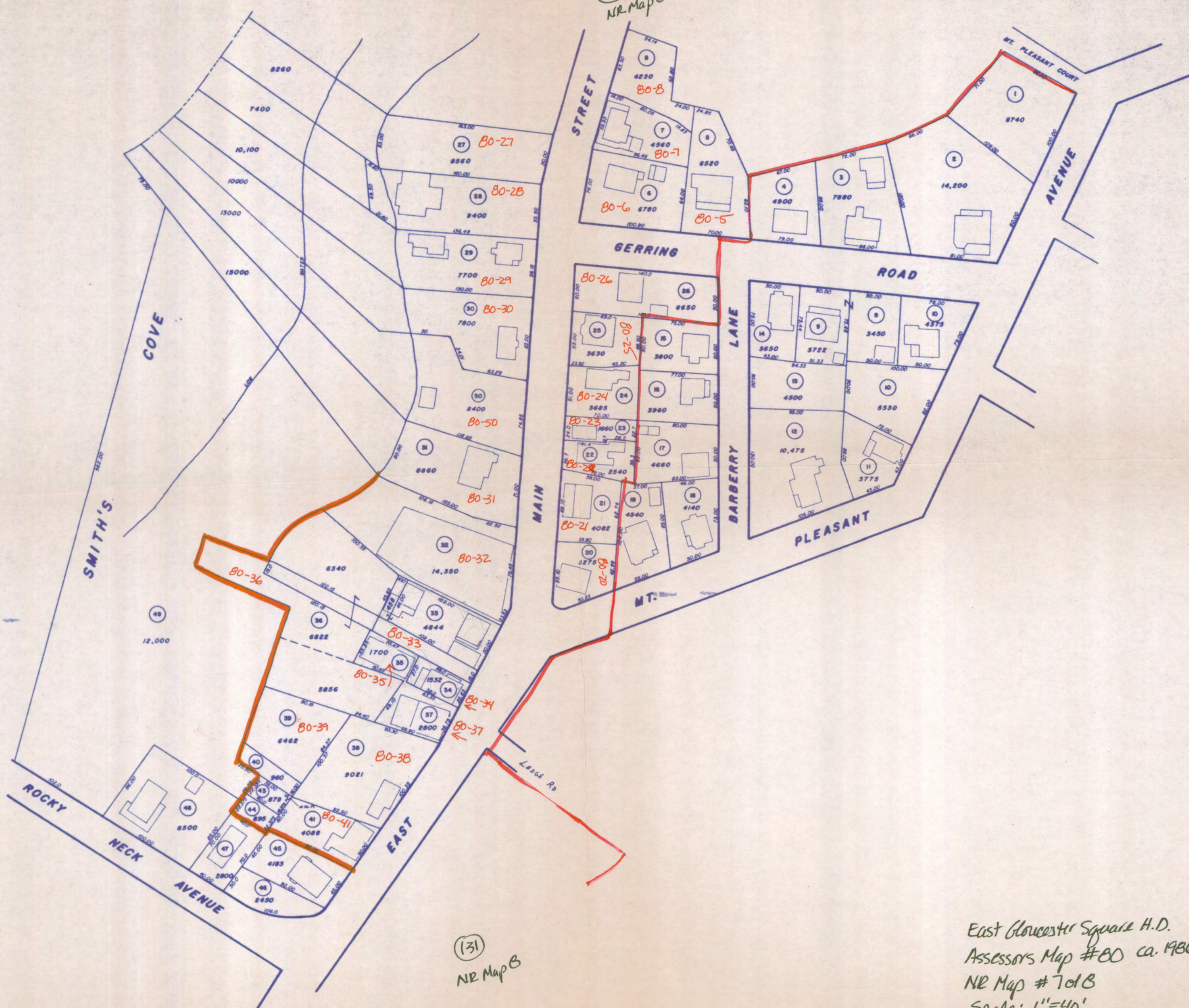
SCALE 1" = 40'

FOR ASSESSMENT PURPOSES ONLY

CITY OF GLOUCESTER, MASSACHUSETTS
SHEET NO. 131

7/21/87

79
NR Map 6



131
NR Map B

East Gloucester Square H.D.
Assessor's Map #80 ca. 1986
NR Map # 7 of B
Scale: 1"=40'

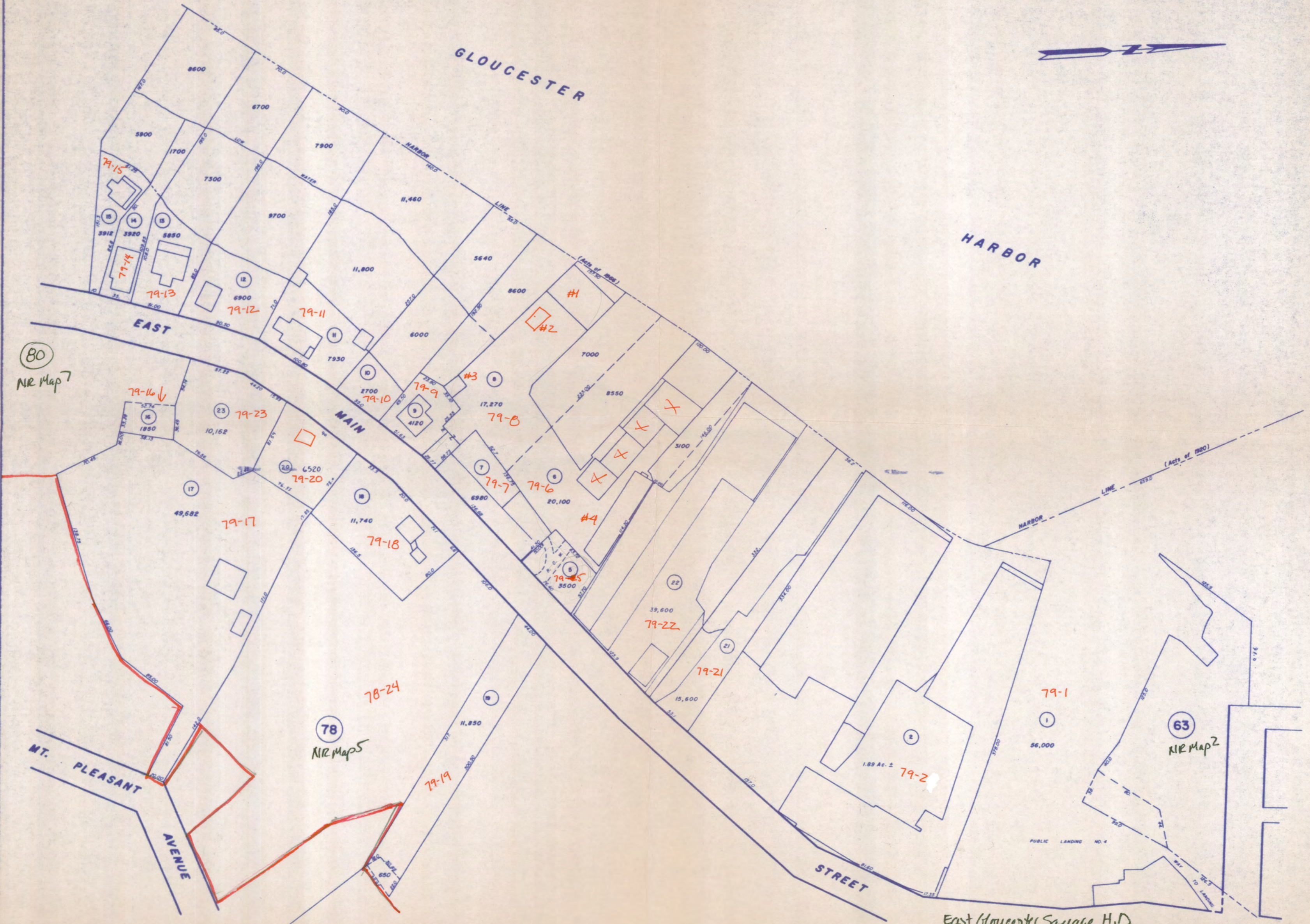
SCALE 1" = 40'

FOR ASSESSMENT PURPOSES ONLY

GLOUCESTER



HARBOR



80
NR Map 7

78
NR Map 5

63
NR Map 2

East Gloucester Square H.D.
Assessors Map # 79 1991
NR Map # 6 of 8
Scale: 1"=40'

SCALE 1" = 40'

FOR ASSESSMENT PURPOSES ONLY

79
NR Map 6

184 E. Main
lot 64-65

77
NR Map 4

78-36

78-37

78-29
Mt. Pleasant

79-19

78-24
Mt. Pleasant

78-23

East Gloucester Square H.D.
Assessors Map # 78 1991
NR Map # 501B
Scale: 1" = 40'

SCALE 1" = 40'

