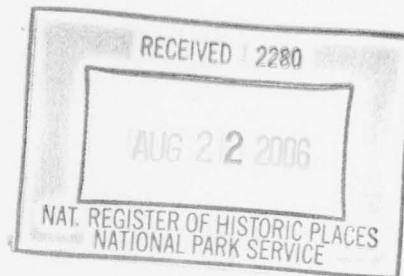


United States Department of the Interior
National Park Service

National Register of Historic Places
Registration Form



911

This form is for use in nominating or requesting determinations for individual properties and districts. See instructions in *How to Complete the National Register of Historic Places Registration Form* (National Register Bulletin 16A). Complete each item by marking "x" in the appropriate box or by entering the information requested. If an item does not apply to the property being documented, enter "N/A" for "not applicable." For functions, architectural classification, materials, and areas of significance, enter only categories and subcategories from the instructions. Place additional entries and narrative items on continuation sheets (NPS Form 10-900a). Use a typewriter, word processor, or computer, to complete all items.

1. Name of Property

historic name Tichnor Rice Dryer and Storage Building

other names/site number _____

2. Location

street & number 1030 AR Hwy 44

☐ not for publication

city or town Tichnor

☐ vicinity

state AR code AR county Arkansas code 001 zip code 72166

3. State/Federal Agency Certification

As the designated authority under the National Historic Preservation Act, as amended, I hereby certify that this ☒ nomination ☐
request for determination of eligibility meets the documentation standards for registering properties in the National Register of Historic
Places and meets the procedural and professional requirements set for in 36 CFR Part 60. In my opinion, the property ☒ meets ☐
does not meet the National Register criteria. I recommend that this property be considered significant
☐ nationally ☐ statewide ☒ locally. (See continuation sheet for additional comments.)

Carolee Thatch
Signature of certifying official/Title

8/17/06
Date

State or Federal agency and bureau

In my opinion, the property ☐ meets ☐ does not meet the National Register criteria. (☐ See Continuation sheet for additional comments.)

Signature of certifying official/Title

Date

State or Federal agency and bureau

4. National Park Service Certification

I hereby certify that the property is:

for
Signature of the Keeper

Date of Action

☒ entered in the National Register.
☐ See continuation sheet

☐ determined eligible for the
National Register.
☐ See continuation sheet

☐ determined not eligible for the
National Register.

☐ removed from the National
Register.

☐ other, (explain:) _____

Daniel J. Visser

9/22/2006

Tichnor Rice Dryer and Storage
Building

Name of Property

Arkansas County, AR

County and State

5. Classification

Ownership of Property
(Check as many boxes as apply)

- ☒ private
☐ public-local
☐ public-State
☐ public-Federal

Category of Property
(Check only one box)

- ☒ building(s)
☐ district
☐ site
☐ structure
☐ object

Number of Resources within Property
(Do not include previously listed resources in count.)

| Contributing | Noncontributing | |
|--------------|-----------------|------------|
| 1 | 1 | buildings |
| | | sites |
| | | structures |
| | | objects |
| 1 | 1 | Total |

Name of related multiple property listing

(Enter "N/A" if property is not part of a multiple property listing.)

A Storm Couldn't Tear Them Down: The Mixed Masonry
Buildings of Silas Owens, Sr., 1938-1955

Number of Contributing resources previously listed in the National Register

6. Function or Use

Historic Functions

(Enter categories from instructions)

AGRICULTURE/SUBSISTENCE: Processing

Current Functions

(Enter categories from instructions)

AGRICULTURE/SUBSISTENCE: Processing

7. Description

Architectural Classification

(Enter categories from instructions)

OTHER/ Industrial

Materials

(Enter categories from instructions)

foundation Concrete

walls tin

roof Metal

other

Narrative Description

(Describe the historic and current condition of the property on one or more continuation sheets.)

United States Department of the Interior
National Park Service

National Register of Historic Places Continuation Sheet

Section number 7 Page 1

SUMMARY

The Tichnor Rice Dryer and Storage Building on Arkansas Highway 44 in the community of Tichnor is a Plain-Traditional industrial building built by Ragland Construction in 1955-1956. The corrugated metal building rises to four stories with two head houses for elevator apparatus on the west and east ends. Modern appendages to the building are attached by chutes or pipes and do not obscure the original architectural integrity of the dryer building.

ELABORATION

The Tichnor Rice Dryer and Storage Building exhibits an L-plan and is erected on a concrete pad foundation. Due to the nature of the business it is open on the first floor for truck access along the northwest corner and the north, east and southeast elevations. The building, referred to as the main plant, is sheathed in corrugated metal sheets and features a gabled metal roof with two gable-roofed head houses on the west and east ends of the main roof.

Western Elevation

The front, western facade faces AR Highway 44. The northwest section of the front façade is open on the first floor to approximately the center of the building. A small shed overhang covers the open bay to deflect rain water. A short shed-roofed room with centered paneled door is located to the south of the opening and a metal, four-light awning window abuts the room to the south. A four-story columnar trash bin, one of two

United States Department of the Interior
National Park Service

National Register of Historic Places Continuation Sheet

Section number 7 Page 2

which were added circa 1957 for removing straw, rocks and mud from the rice is affixed by two chutes to the front façade. From north to south the remainder of the elevation is fenestrated with a single-leaf metal door, a window and metal sliding double-leaf doors on the southwest corner.

The second story of the dryer on the west contains two windows; one behind the trash bin and one to the south of the bin. The fourth story is fenestrated by three windows to the north, center and south of the bin. The gabled head house on the western end of the building is two stories and is located in the intersection of the east-west and north-south gables. Awning windows are placed on the west, south and east sides of the head house. A sign, hand-painted by Richard Selig in the late 1950s or early 1960s, is displayed on the northwest corner of the second story. The sign reads "TICHNOR DRYER AND STORAGE INC." The word "RICE" is centered beneath the name of the plant and encircled with a black line. Entreaties to "EAT, BUY, SELL, GROW" are arranged around the circle, which is flanked by two bundles of rice. "U.S. GOVERNMENT BONDED WAREHOUSE" is painted beneath the circular slogan.

United States Department of the Interior
National Park Service

National Register of Historic Places Continuation Sheet

Section number 7 Page 3

South Elevation

The first floor of the southern elevation at the southwest corner is accessed by metal sliding double doors. The main storage area of the plant is set back approximately twenty-five feet to the north from this elevation. The remainder of the first floor from west to east is open. Fourteen metal posts delineate aisles for trucks to drive beneath the interior storage bins.

Two windows fenestrate the second and fourth stories above the southwestern sliding doors. Two telescopes on the second and third floors for taking in rice from truck beds extend from this elevation above the doors. A single window and double-leaf metal doors open from the fourth floor. A circa 1980s conveyer belt protrudes between the window and doors on the fourth floor for the transport of corn and oats from the main plant to a 1980s warehouse for bagging.

East Elevation

The southeast corner of the rear, eastern elevation features a small square opening and a large recessed open bay for autos and equipment sheltered by a shed overhang. The remainder of the first floor is open and supported by eight metal posts. A second columnar trash bin is centered on the exterior wall and two windows fenestrate the fourth floor to the north and south of the bin.

United States Department of the Interior
National Park Service

National Register of Historic Places Continuation Sheet

Section number 7 Page 4

North Elevation

The northern elevation consists of a continuous open bay on the first floor supported by eighteen metal posts. The fourth story is fenestrated by four windows.

The second head house rises four stories from the ridge of the gabled roof at the east end of the dryer. Windows ventilate the second story on the west and the third story on the east and south. A movable funicular spout is affixed to the head house on the west side. Two pipes from the west and one from the east elevation lead to bins within the plant. The two continuous flow driers are located on the main floor beneath the two head houses.

The interior of the Dryer features a large rectangular room at the west end which was originally used as the scale and dump area until circa 1956. The scale office was located there but the noise of the trucks was too disruptive to business for the manager and spilled grain that remained in crevices of the floor and dump area would rot and cause an odor so a separate scale office was constructed to the northwest of the Dryer. The storage bin area of the plant runs west to east and is separated into 10 aisles with 60 overhead bins that utilize aeration to keep rice dry while it is being stored. Upper floors of the plant contain "pits" that separate individual farmers' dried rice after it comes through the dryer and elevator.

Tichnor Rice Dryer and Storage Building
Name of Property

Arkansas County, AR
County and State

United States Department of the Interior
National Park Service

National Register of Historic Places Continuation Sheet

Section number 7 Page 5

STATEMENT OF SIGNIFICANCE

The Tichnor Rice Dryer and Storage Building in Tichnor, Arkansas County is being nominated to the National Register with local significance under Criterion C for its industrial Plain-Traditional architecture related to rice production, and it is being submitted under the multiple property context, "Get Down the Shovel and the Hoe! Cotton and Rice Farm History and Architecture in the Arkansas Delta, 1900-1955." The building is the largest structure in the community and is an intact reminder of the lifeblood of the Delta and Tichnor.

Tichnor Rice Dryer and Storage
Building

Name of Property

Arkansas County, AR

County and State

8. Statement of Significance

Applicable National Register Criteria

(Mark "x" in one or more boxes for the criteria qualifying the property for National Register listing.)

- ☒ **A** Property is associated with events that have made a significant contribution to the broad patterns of our history.
- ☐ **B** Property is associated with the lives of persons significant in our past.
- ☒ **C** Property embodies the distinctive characteristics of a type, period, or method of construction or represents the work of a master, or possesses high artistic values, or represents a significant and distinguishable entity whose components lack individual distinction.
- ☐ **D** Property has yielded, or is likely to yield, information important in prehistory or history.

Criteria Considerations

(Mark "x" in all the boxes that apply.)

Property is:

- ☐ **A** owned by a religious institution or used for religious purposes.
- ☐ **B** removed from its original location.
- ☐ **C** moved from its original location.
- ☐ **D** a cemetery.
- ☐ **E** a reconstructed building, object, or structure.
- ☐ **F** a commemorative property
- ☐ **G** less than 50 years of age or achieved significance within the past 50 years.

Levels of Significance (local, state, national)

Local

Areas of Significance (Enter categories from instructions)

ARCHITECTURE

Period of Significance

c. 1956

Significant Dates

c. 1956

Significant Person (Complete if Criterion B is marked)

Cultural Affiliation (Complete if Criterion D is marked)

Architect/Builder

Narrative Statement of Significance

(Explain the significance of the property on one or more continuation sheets.)

9. Major Bibliographical References

Bibliography

(Cite the books, articles, and other sources used in preparing this form on one or more continuation sheets.)

Previous documentation on file (NPS):

- ☐ preliminary determination of individual listing (36 CFR 67) has been requested
- ☐ previously listed in the National Register
- ☐ Previously determined eligible by the National Register
- ☐ designated a National Historic Landmark
- ☐ recorded by Historic American Buildings Survey
- # _____

Primary location of additional data:

- ☒ State Historic Preservation Office
- ☐ Other State Agency
- ☐ Federal Agency
- ☐ Local Government
- ☐ University
- ☐ Other

Name of repository:

☐ recorded by Historic American Engineering
Record # _____

United States Department of the Interior
National Park Service

National Register of Historic Places Continuation Sheet

Section number 8 Page 1

SUMMARY

The Tichnor Rice Dryer and Storage Building in Tichnor, Arkansas County is being nominated to the National Register under Criterion C with local significance as the best example of an industrial Plain-Traditional rice plant in the community. It is also being nominated under Criterion A with local significance for its role in the historic production of rice in the Delta. The Tichnor Rice Dryer and Storage Building is being submitted under the multiple property context, "Get Down the Shovel and the Hoe! Cotton and Rice Farm History and Architecture, 1900-1955."

ELABORATION

The community of Tichnor is located in Chester Township in southeast Arkansas County. The area referred to as Little Prairie is bounded by the White River bottoms to the east, the Arkansas River bottoms on the south, Cypress Dismal Swamp to the west (which is the dividing line between the southern end of the Grand Prairie and the Little Prairie), while Cypress Bayou bottoms provide the northern boundary.

Other communities in the Little Prairie include Booty, Jack's Bay, Merrisac, Nady, Prairie Landing, Weber, Whiting Settlement and Wild Goose but the location of the post office in Tichnor leads many of its residents to simply refer to the general vicinity as Tichnor. Early settlement on the Little Prairie occurred in 1721 while the land was still in the possession of the French king as a Louisiana colony. A land grant outpost

United States Department of the Interior
National Park Service

National Register of Historic Places Continuation Sheet

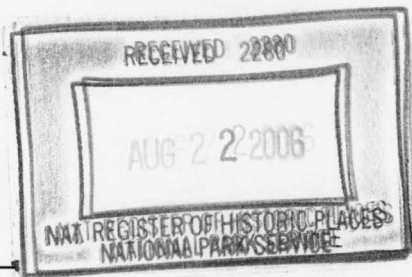
Section number 8 Page 2

organized by John Law and populated with German immigrants barely survived a year and few settlers followed until the post-Civil War period.

One of the 19th century settlers to the Little Prairie included Calvin Tichenor of Indiana. Tichenor had visited Arkansas in 1867 but did not move to the state permanently until 1876. After his first trip he returned to Indiana but by the 1870s he had become part owner of a "riverboat store" with a cousin from Tennessee. The store was literally located on a vessel that plied the Mississippi River with goods for sale to those who traveled to the riverbanks for supplies. The men also worked the White River and in 1875 they stopped at Prairie Landing, situated in the area of LaGrue Bayou and its confluence with the White River.

In 1876 Tichenor married Mary Francis Bonner from the Little Prairie and gave up his interest in the floating mercantile business to open a community store and take up farming and logging in the area.

In the 1880s there was no formal community designation for the area of Tichnor other than Little Prairie or sometimes the Hibbard Settlement after a local family named Hibbard, until Calvin Tichenor applied for the installation of a post office in his store. In 1881 he became the post master of the Hamlet post office, which was closed by November of that year; however, it reopened in 1887 under the name of Tichnor. The "e" was missing from Calvin's last name and although the mistake was acknowledged by the permit clerk the misspelled name remained. Calvin Tichenor died in Indiana in 1898 and Mary passed away in 1930 but descendants of the family still reside in Arkansas County.



Tichnor Rice Dryer and Storage Building
Name of Property

Arkansas County, AR
County and State

United States Department of the Interior
National Park Service

National Register of Historic Places Continuation Sheet

Section number 8 Page 3

Always a farming community, Tichnor never wavered from its early character and continues to be identified as such today with the addition of recreational hunting and fishing opportunities. The soil of the Little Prairie is more than suitable for the growth of rice, soybeans and other crops so the environment of the community was marked by fields, wooded areas by the Arkansas and White River banks and a few stores for the inhabitants. There was never a developed commercial area or concentrated housing tracts in Tichnor.

The Little Prairie had long been considered a productive hunting and fishing area and the creation of the White River Wildlife Refuge in 1935 boosted the numbers of recreational hunters, fishermen and wildlife observers. Improved roads and bridges built by the Civilian Conservation Corps offered enhanced routes to the Prairie's amenities. Local oxbow lakes were popular destinations for ducks and Canadian geese and many hunters came to Gillett, five miles west of Tichnor, via the train in the 1920s. The Corps of Engineers began construction on the Arkansas River lock and dam system in the 1960s, which brought an influx of new residents and business to Tichnor and Gillett. The population eventually suffered a decrease because of the termination of dam construction and because of farm mechanization and modernization. Farm laborers had to go into other areas of work and many family farms were sold or rented to tenant farmers.

United States Department of the Interior
National Park Service

National Register of Historic Places Continuation Sheet

Section number 8 Page 4

Currently, the most imposing structure in Tichnor is the Tichnor Rice Dryer and Storage Building constructed in 1955 for rice farmer Woodrow Turner. The plant was initially built for Turner's personal use by Ragland Construction and it contained six bins and one dryer. Other farmers in the area had to take their grain approximately five miles west into Gillett, then remain in line for days until they could dry their rice. This situation led to Turner forming a corporation, which allowed his neighbors to utilize his bins and dryer. By 1956 he had added 56 more bins and a second dryer to the east of the original building.

Turner grew up in the Prairie area and married Ruby Dickson from Tichnor. The couple raised three children and continued farming and operating the dryer until Woodrow's death in 1982. Ruby passed away in 2006. The Turner's son, Bobby resides in Tichnor and assisted in constructing the Dryer and Storage Building. Bobby's brother and sister live in Cabot.

Today 25-26 stockholders own the Tichnor Rice Dryer and Storage Building and the plant continues in its original capacity and purpose. The rural agricultural environment of the main plant contributes to its historic integrity as it has not been altered architecturally since 1956. A few modernizations have been added in separate structures and buildings; the only connection to those later structures being a conveyer belt to a bagging warehouse constructed in the 1980s and chutes to the trash bins on the east and west of the main plant.

United States Department of the Interior
National Park Service

National Register of Historic Places Continuation Sheet

Section number 8 Page 5

The earliest addition to the complex was the scale office in circa 1956. This building originally had a flat roof but a gabled roof was constructed over it and a boardroom was added to the northeast corner in the mid-1980s. In 1963 a “beanery” of bins and an elevator to store soybeans was built to the north of the main plant. In the 1980s a trailer dump, additional bins and a third dryer were built by R.W. Manufacturers northeast of the plant. The complex was further expanded with the addition of three metal warehouses to the south. None of these structures or buildings is considered contributing to this nomination.

STATEMENT OF SIGNIFICANCE

The Tichnor Rice Dryer and Storage Building has provided employment to Little Prairie residents since 1955 and is considered a landmark in the community. The agricultural character and history of Tichnor is aptly displayed by the original mid-1950s industrial architecture of the main plant. The commercial sign that reminds one to “eat, buy, sell and grow” rice is symbolic of the positive economic impact of the crop in the state after the Great Depression ended and WWII contributed to Arkansas’s position as a major exporter of rice.

The Tichnor Rice Dryer and Storage Building in Tichnor is an intact example of an industrial Plain-Traditional rice plant and is being nominated to the National Register with local significance under Criterion C. It is also being submitted under the Criterion A

Tichnor Rice Dryer and Storage Building
Name of Property

Arkansas County, AR
County and State

United States Department of the Interior
National Park Service

National Register of Historic Places Continuation Sheet

Section number 8 Page 6

For its role in the historic production of rice in the Arkansas Delta. The Tichnor Rice Dryer and Storage Building is being nominated under the multiple-property context "Get Down the Shovel and the Hoe! Arkansas Cotton and Rice Farm History and Architecture in the Arkansas Delta, 1900-1955."

Tichnor Rice Dryer and Storage Building
Name of Property

Arkansas County, AR
County and State

United States Department of the Interior
National Park Service

National Register of Historic Places Continuation Sheet

Section number 9 Page 1

BIBLIOGRAPHY

Arnold, Morris. *Unequal Laws Unto a Savage Race: European Legal Traditions in Arkansas, 1686-1836*. Fayetteville: The University of Arkansas Press, 1985.

Cover, John. "A Community Named for Calvin Tichenor: Tichnor, Arkansas 72166." *Grand Prairie Historical Society Bulletin* 2. (October 2001).

Cover, John. Gillett, AR. Telephone interview with author, 19 June, 2006.

Edmondson, Bill. Tichnor, AR. Retired manager of Tichnor Rice Dryer and Storage. Telephone interview with author, 19 June, 2006.

Sanders, Marjorie. Gillett, AR. Tichnor Rice Dryer and Storage. Personal interview with author 16 June, 2006.

Turner, Bobby. Tichnor, AR. Telephone interview with author, 19 June, 2006.

Tichnor Rice Dryer and Storage
Building

Name of Property

Arkansas County, AR

County and State

10. Geographical Data

Acreage of Property 5.88 acres

UTM References

(Place additional UTM references on a continuation sheet.)

1 15 659940 3778618
Zone Easting Northing
2 _____

3 _____
Zone Easting Northing
4 _____

☐ See continuation sheet

Verbal Boundary Description

Boundary Justification

(Explain why the boundaries were selected on a continuation sheet.)

This boundary includes all of the property historically associated with this resource that retains its integrity.

11. Form Prepared By

name/title Holly Hope/ Special Projects Historian
organization Arkansas Historic Preservation Program date 08/17/06
street & number 1500 Tower Building, 323 Center Street telephone 501 324-9880
city or town Little Rock state AR zip code 72201

Additional Documentation

Submit the following items with the completed form:

Continuation Sheets

Maps

A **USGS map** (7.5 or 15 minute series) indicating the property's location

A **Sketch map** for historic districts and properties having large acreage or numerous resources.

Photographs

Representative **black and white photographs** of the property.

Additional items

(Check with the SHPO or FPO for any additional items.)

Property Owner

(Complete this item at the request of SHPO or FPO.)

name Dale Bartlett
street & number PO 756 telephone 870 548-2240
city or town Marvell state AR zip code 72366

Paperwork Reduction Act Statement: This information is being collected for applications to the National Register of Historic Places to nominate properties for listing or determine eligibility for listing, to list properties, and to amend existing listing. Response to this request is required to obtain a benefit in accordance with the National Historic Preservation Act, as amended (16 U.S.C. 470 *et seq.*)

Estimated Burden Statement: Public reporting burden for this form is estimated to average 18.1 hours per response including time for reviewing instructions, gathering and maintaining data, and completing and reviewing the form. Direct comments regarding this burden estimate or any aspect of this form to the Chief, Administrative Services Division, National Park Service, P. O. Box 37127, Washington, DC 20013-7127; and the Office of Management and Budget, Paperwork Reductions Projects (1024-0018), Washington, DC 20303.

**United States Department of the Interior
National Park Service**

**National Register of Historic Places
Continuation Sheet**

Section number _____ Page _____

SUPPLEMENTARY LISTING RECORD

NRIS Reference Number: 06000911

Date of Listing: September 22, 2006

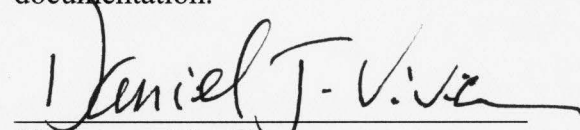
Property Name: Tichnor Rice Dryer and Storage Building

County: Benton

State: Arkansas

Arkansas Cotton and Rice Farm History and Architecture in the Arkansas Delta, 1900-1955
Multiple Name

This property is listed in the National Register of Historic Places in accordance with the attached nomination documentation subject to the following exceptions, exclusions, or amendments, notwithstanding the National Park Service certification included in the nomination documentation.

for 
Signature of the Keeper

September 22, 2006

Date of Action

=====

Amended Items in Nomination:

Section 5. Classification

The name of the related multiple property listing is hereby changed to: "Get Down the Shovel and the Hoe!": Arkansas Cotton and Rice Farm History and Architecture in the Arkansas Delta, 1900-1955.

Section 8. Statement of Significance

Criterion A is hereby removed.

[These changes were made in consultation with and approved by the National Register staff of the Arkansas SHPO.]

The Arkansas State Historic Preservation Office was notified of this amendment.

DISTRIBUTION:

National Register property file

Nominating Authority (without nomination attachment)

UNITED STATES DEPARTMENT OF THE INTERIOR
NATIONAL PARK SERVICE

NATIONAL REGISTER OF HISTORIC PLACES
EVALUATION/RETURN SHEET

REQUESTED ACTION: NOMINATION

PROPERTY Tichnor Rice Dryer and Storage Building

NAME:

MULTIPLE

NAME:

Cotton and Rice Farm History and Architecture in the Arkansas Delta MPS
~~Mixed Masonry Buildings of Silas Owens, Sr. MPS~~

STATE & COUNTY: ARKANSAS, Arkansas

DATE RECEIVED: 8/22/06

DATE OF PENDING LIST: 9/05/06

DATE OF 16TH DAY: 9/20/06

DATE OF 45TH DAY: 10/05/06

DATE OF WEEKLY LIST:

REFERENCE NUMBER: 06000911

REASONS FOR REVIEW:

APPEAL: N DATA PROBLEM: N LANDSCAPE: N LESS THAN 50 YEARS: N
OTHER: N PDIL: N PERIOD: N PROGRAM UNAPPROVED: N
REQUEST: N SAMPLE: N SLR DRAFT: Y NATIONAL: N

COMMENT WAIVER: N

___ ACCEPT ___ RETURN ___ REJECT ___ DATE

ABSTRACT/SUMMARY COMMENTS:

The Tichnor Rice Dryer and Storage Building is locally significant under Criterion C as an excellent example of a mid-twentieth-century rice plant. It was built about 1956 and remains in use today. The plant has been modernized but not drastically altered and meets the registration requirements set forth in the Multiple Property Documentation Form, "Get Down the Shovel and the Hoe!": Arkansas Cotton and Rice Farm History and Architecture in the Arkansas Delta, 1900-1955." Today, it retains integrity from its period of construction and reflects the history of rice production in the Arkansas Delta.

RECOM./CRITERIA

Accept A F C

REVIEWER

Daniel Vivian

DISCIPLINE

Historian

TELEPHONE

(202) 354-2252

DATE

9/22/06

DOCUMENTATION see attached comments Y/N see attached SLR (Y)N

If a nomination is returned to the nominating authority, the nomination is no longer under consideration by the NPS.



Tichnor Rice Dryer + Storage Building

Arkansas Co, AR

March, 2006

Holly Hope

Arkansas Historic Preservation Program

View from Southeast



Trchnor Rice Dryer + Storage Building

Arkansas Co, AR

March, 2006

Holly Hope

Arkansas Historic Preservation Program

View from North east





Tichnor Rice Dryer + Storage Building

March, 2006

Holly Hope

Arkansas Historic Preservation Program

aisles, bins view from South



Tichnor Rice Dryer + Storage Building
Arkansas Co, AR
March, 2006

Holly Hope
Arkansas Historic Preservation Program
Dryer View from North



Tichnor Rice Dryer + Storage Building

Arkansas Co, AR

March, 2006

Holly Hope

Arkansas Historic Preservation Program

Dryer View from South



Tichnor Rice Dryer + Storage Building

Arkansas Co, AR

Holly Hope

March, 2000

Arkansas Historic Preservation Program

Scale Office from West

TICHNOR DRYER & STORAGE

INC.

EAT
BUY RICE SELL
GROW

U.S. GOVERNMENT
BONDED WAREHOUSE

Tichnor Rice Drier + Storage Building
Arkansas Co, AR

Holly Hope

March, 2006

Arkansas Historic Preservation Program

Sign on West elevation



Tichnor Rice Dryer + Storage Building
Arkansas Co, AR
Holly Hope
March, 2006
Arkansas Historic Preservation Program
View from West



Tichnor Rice Packer + Storage Building

Arkansas Co, AR

March, 2006

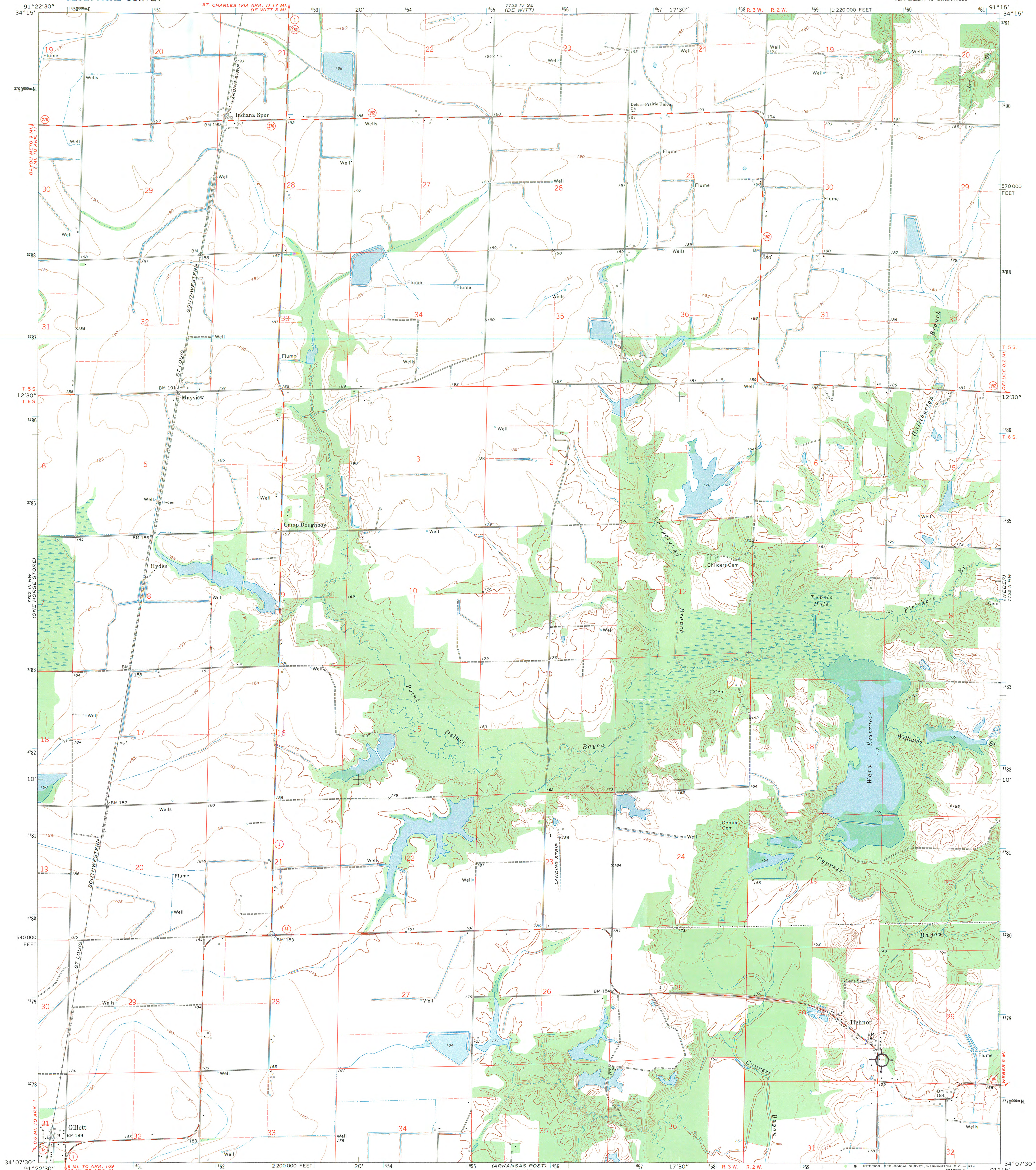
Holly Hope

Arkansas Historic Preservation Program

Trashbin West

UNITED STATES
DEPARTMENT OF THE INTERIOR
GEOLOGICAL SURVEY

TICHNOR QUADRANGLE
ARKANSAS—ARKANSAS CO.
7.5 MINUTE SERIES (TOPOGRAPHIC)
NE 1/4 GILLET 15' QUADRANGLE

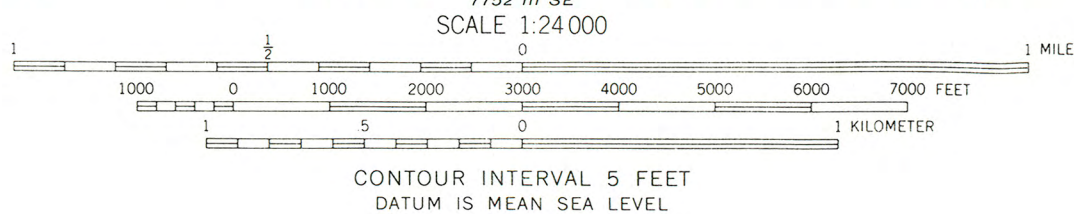
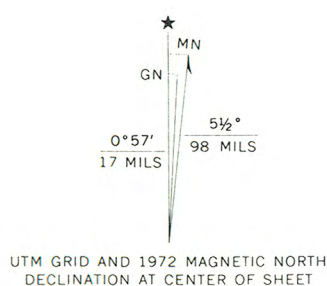


Mapped, edited, and published by the Geological Survey
Control by USGS and USC&GS

Topography by photogrammetric methods from aerial
photographs taken 1971. Field checked 1972

Projection and 10,000-foot grid ticks: Arkansas coordinate
system, south zone (Lambert conformal conic)
1000-meter Universal Transverse Mercator grid ticks,
zone 15, shown in blue. 1927 North American datum

Fine red dashed lines indicate selected fence and field lines where
generally visible on aerial photographs. This information is unchecked



THIS MAP COMPLIES WITH NATIONAL MAP ACCURACY STANDARDS
FOR SALE BY U.S. GEOLOGICAL SURVEY, DENVER, COLORADO 80225, OR WASHINGTON, D.C. 20242
AND BY THE ARKANSAS GEOLOGICAL COMMISSION, LITTLE ROCK, ARKANSAS 72201
A FOLDER DESCRIBING TOPOGRAPHIC MAPS AND SYMBOLS IS AVAILABLE ON REQUEST



| ROAD CLASSIFICATION | |
|------------------------------------|--|
| Primary highway, hard surface | Light-duty road, hard or improved surface |
| Secondary highway, hard surface | Unimproved road |
| Interstate Route | U.S. Route |
| | State Route |

Tichnor Rice Dyke + Stowage Building
Tichnor, Arkansas Co. AR
15/659940/3778618
TICHNOR, ARK.
NE 1/4 GILLET 15' QUADRANGLE
N3407.5-W9115/7.5

1972

AMS 7752 III NE—SERIES V884



The Department of Arkansas Heritage

Mike Huckabee, Governor
Cathie Matthews, Director

Arkansas Arts Council
▪
Arkansas Natural Heritage
Commission
▪
Delta Cultural Center
▪
Historic Arkansas Museum
▪
Mosaic Templars
Cultural Center
▪
Old State House Museum



Arkansas Historic Preservation Program

1500 Tower Building
323 Center Street
Little Rock, AR 72201
(501) 324-9880
fax: (501) 324-9184
tdd: (501) 324-9811

e-mail: info@arkansaspreservation.org

website:

www.arkansaspreservation.org

August 17, 2006

Dr. Janet Matthews
Chief of Registration
United States Department of the Interior
National Register of Historic Places
National Park Service
8th Floor
1201 Eye Street, NW
Washington, DC 20005

RE: Tichnor Rice Dryer and Storage Building, Arkansas County,
Arkansas

Dear Dr. Matthews:

We are enclosing for your review the above-referenced nomination. The Arkansas Historic Preservation Program has complied with all applicable nominating procedures and notification requirements in the nomination process.

If you need further information, please call Ralph S. Wilcox of my staff at (501) 324-9787. Thank you for your cooperation in this matter.

Sincerely,

Cathie Matthews
State Historic Preservation Officer

CM: hh

Enclosure



An Equal Opportunity Employer

