



Plate 1 - General overview of Falls S.U.M. Dam and hydro-electric plant, Historic American Engineering Record.



JAN. 17<sup>th</sup> 1917.

191-A

Plate 2 - S.U.M. Hydro-Electric Plant, January 17, 1917, Reid Studio.



Plate 3 - S.U.M. Hydro - Electric Plant, interior, 1971 - Historic American Engineering Record.



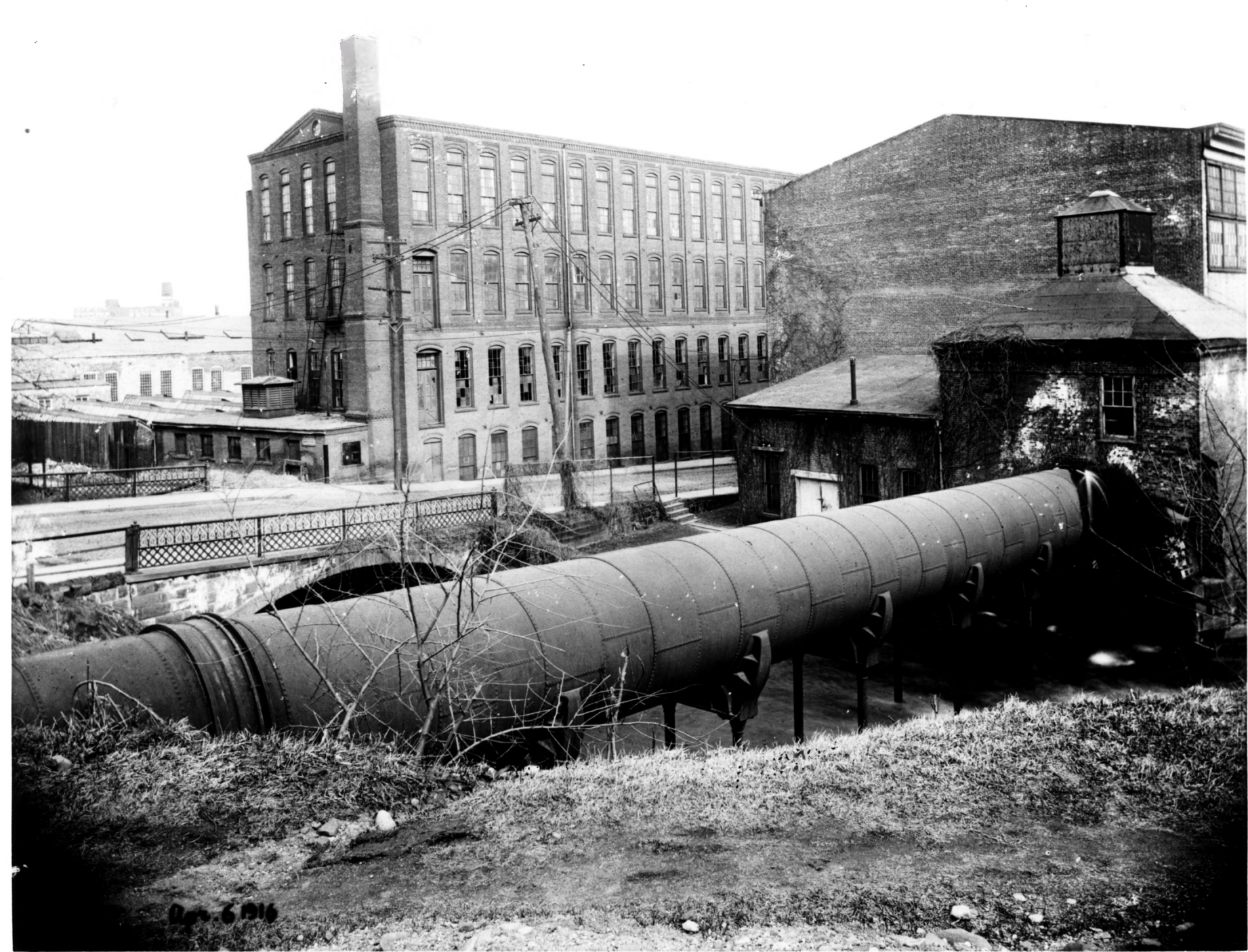
Plate 4 - Lower Receiving along Van Houten Street, Historic American  
Engineering Record.-



Plate 5 - Danforth Cooke Locomotive Works, Market Street ca 1860's showing portions of raceway in foreground that were later covered. Further up raceway already covered., Livitsanz Photograph Studio



Plate 6 - Historic American Engineering Record team and archeology salvage project in covered tailrace along Market Street.



Apr. 6 1916  
Plate 7 - Ivanhoe Wheelhouse with penstock, April 6, 1916, Reid Studio



Plate 8 - Upper raceway, spillway and Ivanhoe Wheelhouse under reconstruction, 1973, Historic American Engineering Record.



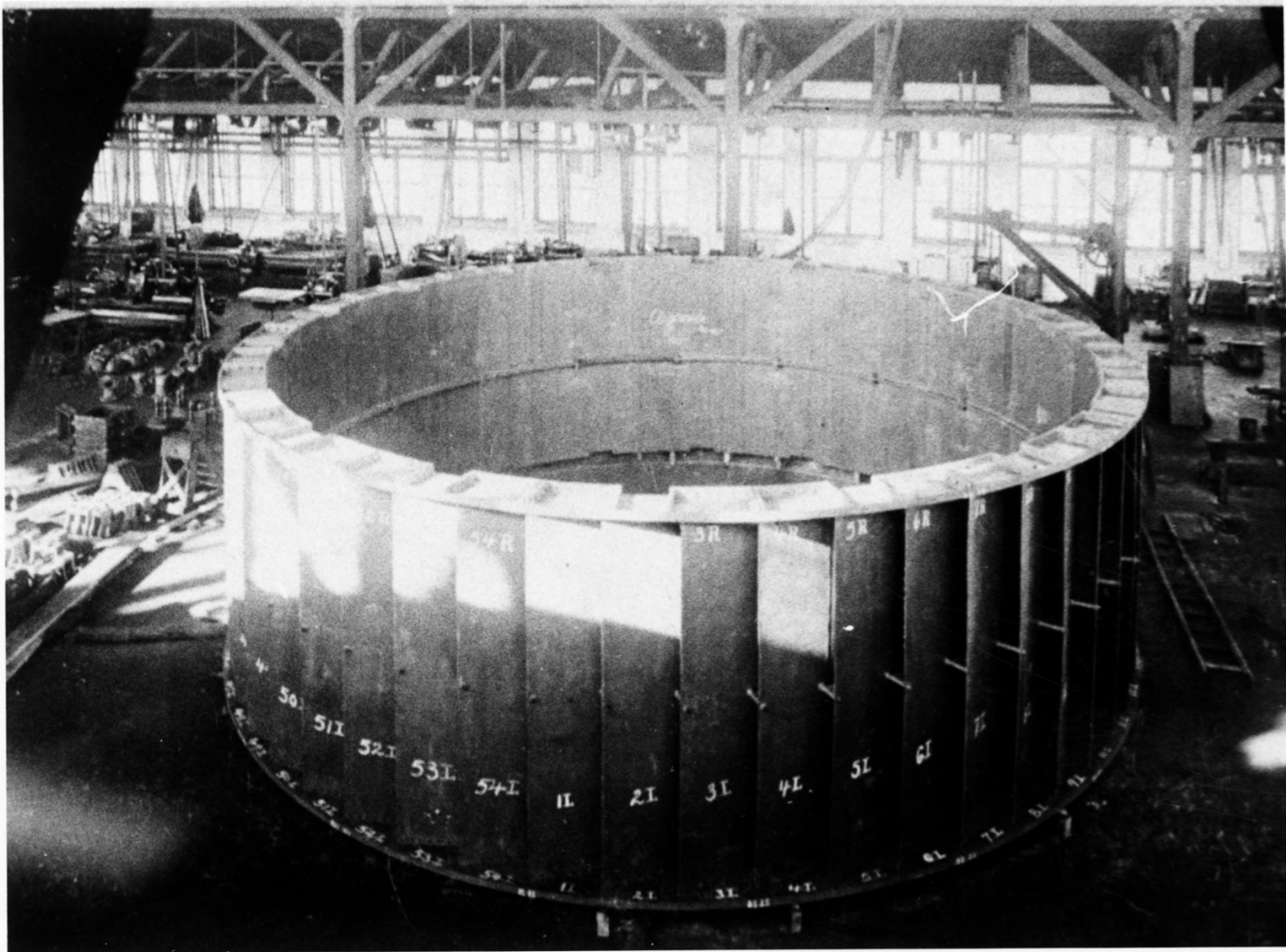


Plate 9 - A forty-foot iron water wheel under construction in the Danforth-Cooke shop in Paterson, Passaic County Historical Society.

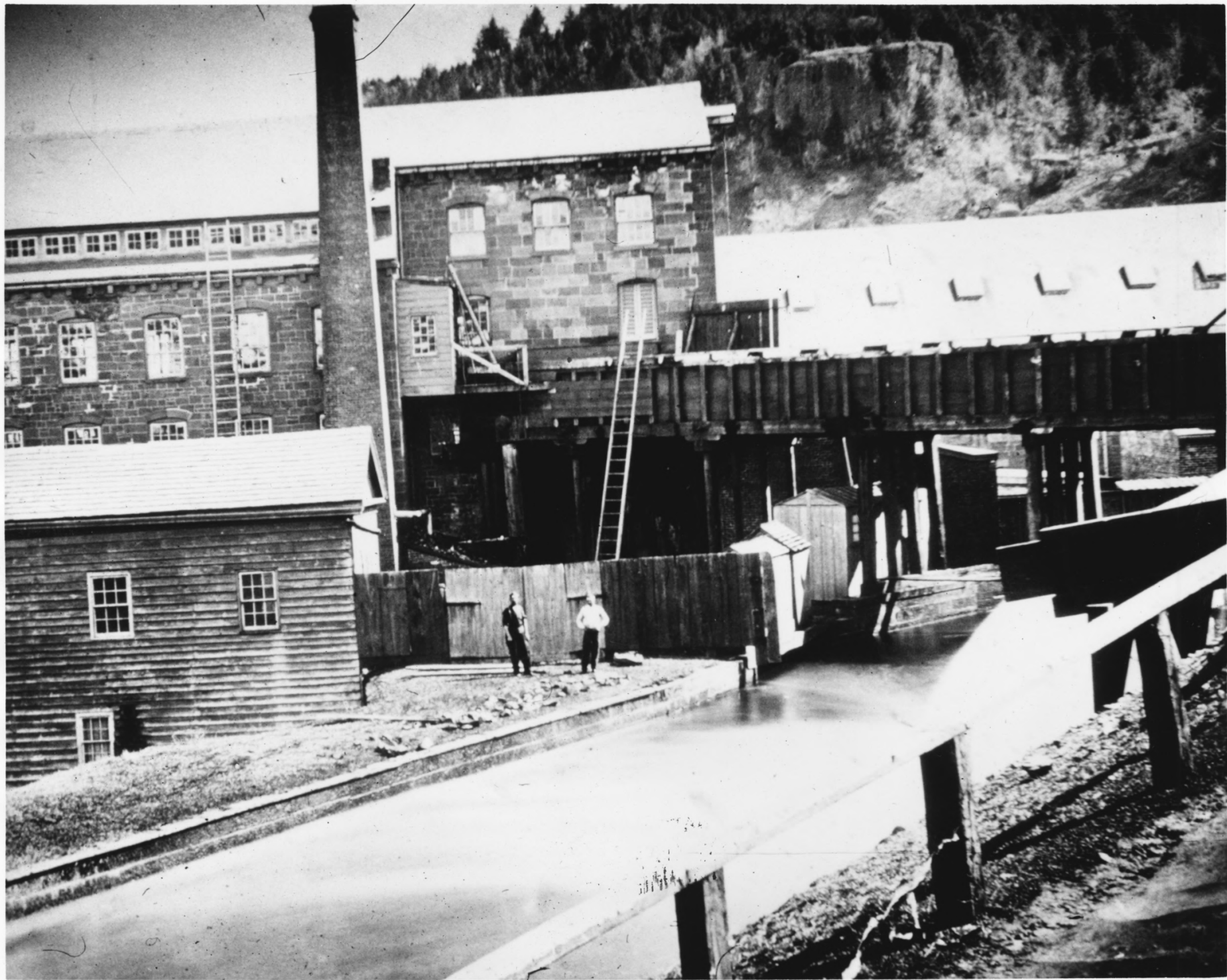


Plate 10 - Middle Raceway ca 1860's showing flum trunk from upper race crossing to Passaic Mill No. 2. Passaic County Historical Society.

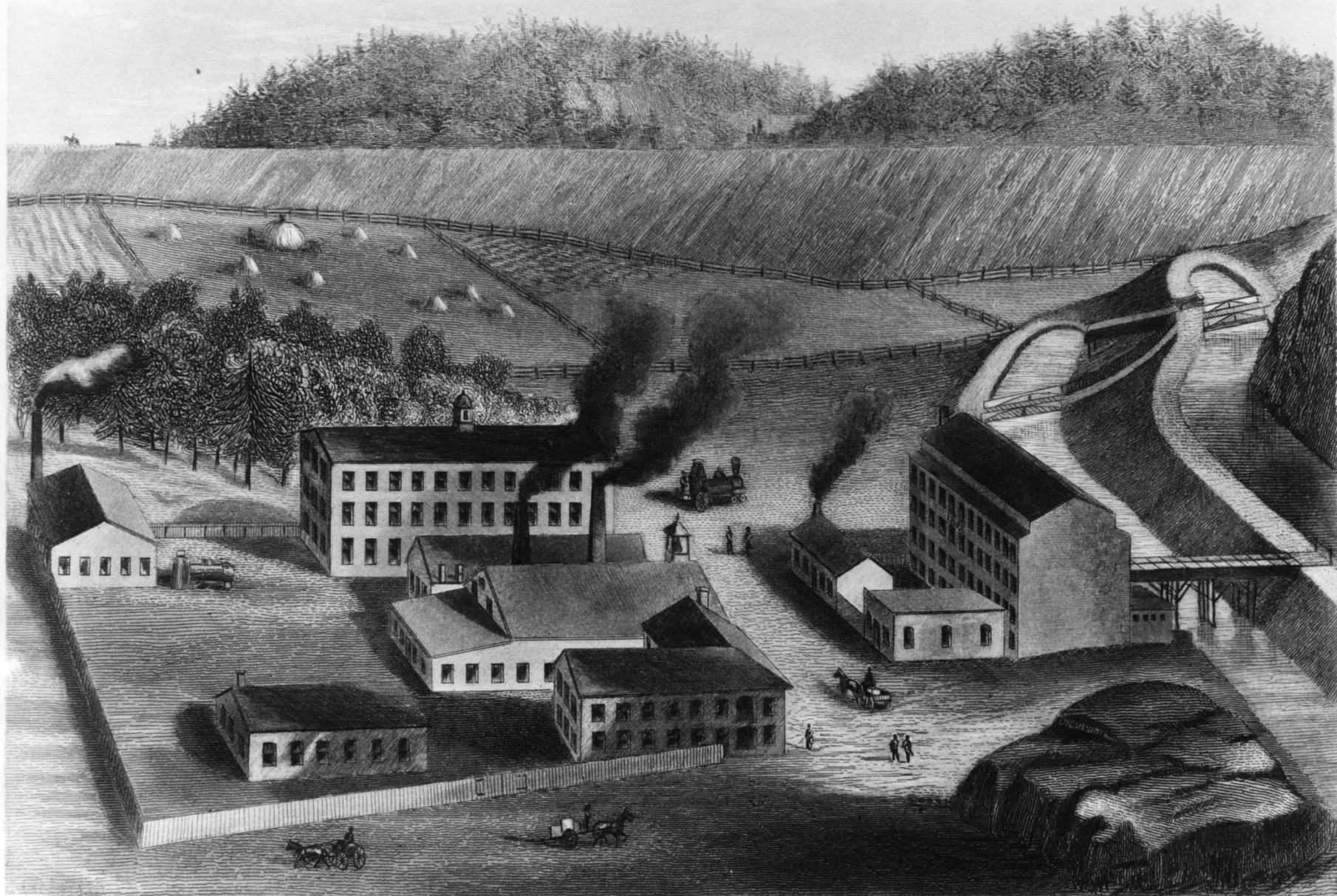


Plate 11 - Rogers Locomotive Works, Spruce Street showing flum  
trunks to the Jefferson Mill (1831) and Morris canal in  
background, Trumball.



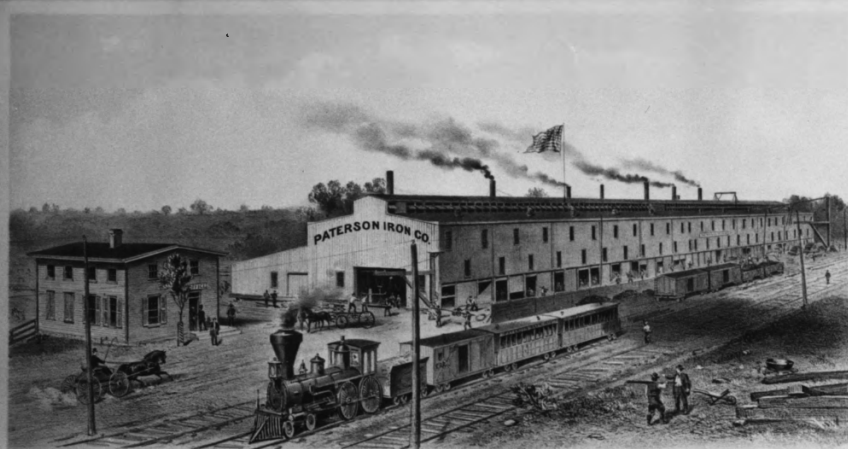
STANDARD  
DYEING & FINISHING Co  
OFFICE →

STANDARD  
EMPLOYEES  
ONLY

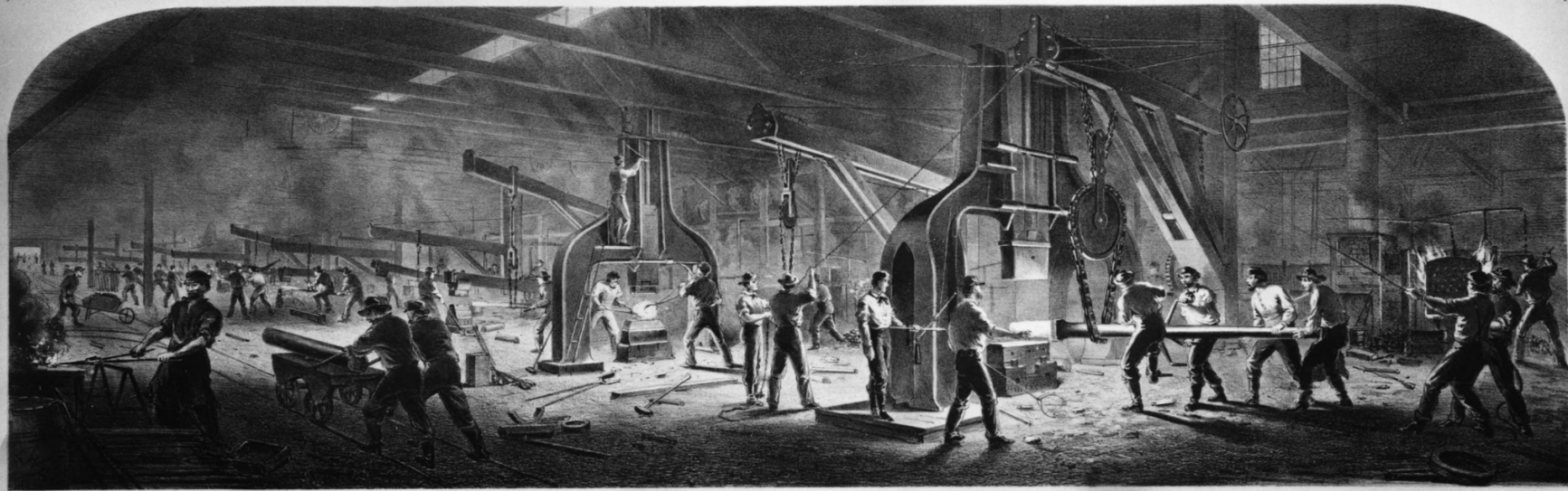
STANDARD  
OFFICE  
→

STANDARD  
OFFICE  
→

# PATERSON IRON CO. PATERSON, N. J.



IMPORTERS OF BOWLING & LOWMOOR TIRE BARS & MANUFACTURERS OF



ENDICOTT & CO. LITH. 40 BEEKMAN ST. NEW YORK

## STEAMBOAT & RAILROAD FORGINGS.

