

United States Department of the Interior  
National Park Service

National Register of Historic Places  
Continuation Sheet

Section number \_\_\_\_\_ Page \_\_\_\_\_

SUPPLEMENTARY LISTING RECORD

NRIS Reference Number: 93000030

Date Listed: 2/22/93


Galen Elementary School  
Property Name

Macon  
County

TENNESSEE  
State

Education Related Properties of Macon Co. MPS  
Multiple Name

-----  
This property is listed in the National Register of Historic Places in accordance with the attached nomination documentation subject to the following exceptions, exclusions, or amendments, notwithstanding the National Park Service certification included in the nomination documentation.

  
Signature of the Keeper

3/26/93  
Date of Action

=====  
Amended Items in Nomination:

Section No. 8

This nomination is amended to show the builder as Jimmy Bohanon, as is indicated in the text.

This change has been confirmed by phone with the Tennessee SHPO (3/26/93).

DISTRIBUTION:  
National Register property file  
Nominating Authority (without nomination attachment)

RECEIVED

JAN 14 1993

NATIONAL REGISTER

United States Department of the Interior  
National Park Service

National Register of Historic Places  
Registration Form

This form is for use in nominating or requesting determinations for individual properties and districts. See instructions in *How to Complete the National Register of Historic Places Registration Form* (National Register Bulletin 16A). Complete each item by marking "x" in the appropriate box or by entering the information requested. If an item does not apply to the property being documented, enter "N/A" for "not applicable." For functions, architectural classification, materials, and areas of significance, enter only categories and subcategories from the instructions. Place additional entries and narrative items on continuation sheets (NPS Form 10-900a). Use a typewriter, word processor, or computer, to complete all items.

1. Name of Property

historic name Galen Elementary School

other names/site number N/A

2. Location

street & number Corner of Galen & Tucker Roads N/A not for publication

city or town Galen N/A vicinity

state Tennessee code TN county \_\_\_\_\_ code 111 zip code 37083

3. State/Federal Agency Certification

As the designated authority under the National Historic Preservation Act, as amended, I hereby certify that this  nomination  request for determination of eligibility meets the documentation standards for registering properties in the National Register of Historic Places and meets the procedural and professional requirements set forth in 36 CFR Part 60. In my opinion, the property  meets  does not meet the National Register criteria. I recommend that this property be considered significant  nationally  statewide  locally, ( See continuation sheet for additional comments.)

Herbert L. Hays 1/6/93  
Signature of certifying official/Title Date  
Deputy State Historic Preservation Officer, Tennessee Historical Commission  
State of Federal agency and bureau

In my opinion, the property  meets  does not meet the National Register criteria. ( See continuation sheet for additional comments.)

\_\_\_\_\_  
Signature of certifying official/Title Date

\_\_\_\_\_  
State or Federal agency and bureau

4. National Park Service Certification

I hereby certify that the property is:

<input checked="" type="checkbox"/> entered in the National Register. <input type="checkbox"/> See continuation sheet.	<u>for</u> Signature of the Keeper <u>_____</u>	Date of Action <u>2/22/93</u>
<input type="checkbox"/> determined eligible for the National Register. <input type="checkbox"/> See continuation sheet.	_____	_____
<input type="checkbox"/> determined not eligible for the National Register.	_____	_____
<input type="checkbox"/> removed from the National Register.	_____	_____
<input type="checkbox"/> other, (explain:)	_____	_____

Galen Elementary School  
Name of Property

Macon County, TN  
County and State

**5. Classification**

**Ownership of Property**  
(Check as many boxes as apply)

- private
- public-local
- public-State
- public-Federal

**Category of Property**  
(Check only one box)

- building(s)
- district
- site
- structure
- object

**Number of Resources within Property**  
(Do not include previously listed resources in the count.)

Contributing	Noncontributing	
2		_____ buildings
		_____ sites
		_____ structures
		_____ objects
	2	_____ Total

**Name of related multiple property listing**  
(Enter "N/A" if property is not part of a multiple property listing.)

Education Related Properties of Macon Co., TN

**Number of contributing resources previously listed in the National Register**

0

**6. Function or Use**

**Historic Functions**  
(Enter categories from instructions)

EDUCATION: school

**Current Functions**  
(Enter categories from instructions)

SOCIAL: meeting hall

**7. Description**

**Architectural Classification**  
(Enter categories from instructions)

OTHER; SCHOOLHOUSE

**Materials**  
(Enter categories from instructions)

foundation STONE

walls WEATHERBOARD

roof METAL

other WOOD

**Narrative Description**

(Describe the historic and current condition of the property on one or more continuation sheets.)

8. Statement of Significance

Applicable National Register Criteria

(Mark "x" in one or more boxes for the criteria qualifying the property for National Register listing.)

- A Property is associated with events that have made a significant contribution to the broad patterns of our history.
B Property is associated with the lives of persons significant in our past.
[X] C Property embodies the distinctive characteristics of a type, period, or method of construction or represents the work of a master, or possesses high artistic values, or represents a significant and distinguishable entity whose components lack individual distinction.
D Property has yielded, or is likely to yield, information important in prehistory or history.

Criteria Considerations

(Mark "x" in all the boxes that apply.)

Property is: N/A

- A owned by a religious institution or used for religious purposes.
B removed from its original location.
C a birthplace or grave.
D a cemetery.
E a reconstructed building, object, or structure.
F a commemorative property.
G less than 50 years of age or achieved significance within the past 50 years.

Areas of Significance

(Enter categories from instructions)

ARCHITECTURE

Period of Significance

1928-1929

Significant Dates

1928-1929

Significant Person

(Complete if Criterion B is marked above)

N/A

Cultural Affiliation

N/A

Architect/Builder

Unknown

Narrative Statement of Significance

(Explain the significance of the property on one or more continuation sheets.)

9. Major Bibliographical References

Bibliography

(Cite the books, articles, and other sources used in preparing this form on one or more continuation sheets.)

Previous documentation on file (NPS): N/A

- preliminary determination of individual listing (36 CFR 67) has been requested
previously listed in the National Register
previously determined eligible by the National Register
designated a National Historic Landmark
recorded by Historic American Buildings Survey #
recorded by Historic American Engineering Record #

Primary location of additional data:

- [X] State Historic Preservation Office
Other State agency
Federal agency
Local government
University
Other

Name of repository:

Galen Elementary School

Name of Property

Macon County, TN

County and State

10. Geographical Data

Acreeage of Property 1.5 acres

Galen TN-KY 320 SW

UTM References

(Place additional UTM references on a continuation sheet.)

1 16 592860 4048240
Zone Easting Northing

3 Zone Easting Northing
4 Zone Easting Northing

See continuation sheet

Verbal Boundary Description

(Describe the boundaries of the property on a continuation sheet.)

Boundary Justification

(Explain why the boundaries were selected on a continuation sheet.)

11. Form Prepared By

name/title Nancy Jane Baker

organization Tennessee Historical Commission date September 30, 1992

street & number 701 Broadway telephone (615) 742-6734

city or town Nashville state TN zip code 37243-0442

Additional Documentation

Submit the following items with the completed form:

Continuation Sheets

Maps

A USGS map (7.5 or 15 minute series) indicating the property's location.

A Sketch map for historic districts and properties having large acreage or numerous resources.

Photographs

Representative black and white photographs of the property.

Additional items

(Check with the SHPO or FPO for any additional items)

Property Owner

(Complete this item at the request of SHPO or FPO.)

name Doyle Gaines, County Executive

street & number Macon County Courthouse telephone (615) 666-2363

city or town Lafayette state TN zip code 37083

Paperwork Reduction Act Statement: This information is being collected for applications to the National Register of Historic Places to nominate properties for listing or determine eligibility for listing, to list properties, and to amend existing listings. Response to this request is required to obtain a benefit in accordance with the National Historic Preservation Act, as amended (16 U.S.C. 470 et seq.).

Estimated Burden Statement: Public reporting burden for this form is estimated to average 18.1 hours per response including time for reviewing instructions, gathering and maintaining data, and completing and reviewing the form. Direct comments regarding this burden estimate or any aspect of this form to the Chief, Administrative Services Division, National Park Service, P.O. Box 37127, Washington, DC 20013-7127; and the Office of Management and Budget, Paperwork Reductions Projects (1024-0018), Washington, DC 20503.

United States Department of the Interior  
National Park ServiceNational Register of Historic Places  
Continuation SheetSection number 7 Page 1Galen School  
Macon County, TN

## DESCRIPTION

Located on corner of Galen and Tucker Roads in the ninth civil district of Macon County, the Galen School was built between 1928 - 1929. The Galen four room school was built by Jimmy Bohanon, a local builder who constructed several local schools for Macon County. Galen School is a stock state plan for a two year high school with grade school. However, Galen was never used as a high school. Galen School is a local variation of plan 3-B the Building Plans For Rural School House, 1928 edition (See Figure 1).

The Galen School has a side facing metal gable roof and a small box cornice with frieze board. The school is sided with weatherboard with corner boards. The entire structure has a flushboard water table above the dressed stone foundation.

The east (front) facade of the school has a central one story projecting portico supported by two square posts. Located beneath the pedimented portico is a recessed entryway with a stylized segmental arched opening. The recessed entry area is decorated with simple baseboards, vertical beaded board wainscotting, and horizontal beaded board walls above the simple molded chair rail. The door is a simple three (3) paneled wood door. Flanking the central portico are banks of five (5) nine-over-nine wooden double-hung sash windows, protected by simple board shutters.

The south elevation has a gable end with frieze and two (2) rectangular louvered attic vents. There is a pair of small six-over-six double-hung sash windows, covered with plain board shutters. These windows represent the variation in State Plan number 3-B. In the state plan a door exists at this end of the building. The Macon Countians made a change with the interior plan to create a small "teachers room." To provide light for the room, two (2) windows were placed high up in the elevation to act like transom light and to provide air circulation.

The weatherboard siding on west elevation has corner boards and a water table. There are two banks of six (6) nine-over-nine wooden double hung sash windows, protected by plain board shutters similar to those on the facade.

The north elevation is a plain weatherboarded side except for a pair of rectangular louvered attic vents. The elevation has a water table, corner boards, and frieze board like the rest of the structure. Visible from this

United States Department of the Interior  
National Park Service

National Register of Historic Places  
Continuation Sheet

Section number 7 Page 2

Galen School  
Macon County, TN

---

The interior of the Galen School is consistent through out. It possess beaded board ceilings running north to south, the walls are horizontal beaded board above a simple molded chair rail with vertical beaded board wainscotting. The baseboards consists of simple wide finished boards.

Galen School has three (3) somewhat equally sized classrooms, the front northeast, and the back northwest and southwest rooms. The north two classrooms are divided by a wall with wainscotting with standard three (3) foot wide blackboards above the wainscotting. The two (2) blackboard areas could be raised up into the area of the wall above, so that an assembly room could be created. All of the blackboards and weight system to raise the boards are still in place and in a semblance of working order. All of the classrooms have at least two (2) sections of three (3) foot wide by nine (9) foot long blackboard. The three (3) large classrooms have stoves for heat.

The area which is usually the fourth classroom in the state plan is divided into three smaller rooms: a small classroom, a coat room off the entrance hall, and a teacher's room. The small classroom was converted into a kitchen in 1941. Access to the teacher's room is from the southwest classroom.

There is one small outhouse constructed at the same time as the schoolhouse and is located behind the school. The one story structure is a small square covered by a shed metal roof that slopes to the rear, with vertical board siding. It was used a latrine and is in poor condition, however it is contributing to the nomination.

**United States Department of the Interior  
National Park Service****National Register of Historic Places  
Continuation Sheet**Section number 8 Page 3Galen School  
Macon County, TN**STATEMENT OF SIGNIFICANCE**

The Galen School is being nominated under criterion C for its local significance as an excellent example of a local interpretation of a state school plan. The building was used by the county as a rural schoolhouse until May 1960.

Galen School was originally built to serve as a two year high school for the county. "During this year (1928) a two year feeder high school was taught in the Antioch Church house in the community of Galen, by Mr. Lewis Banly. The four room building was built at Galen in 1928 and 1929, and opened in August of 1929 with one room for the first four grades, one for 5,6,7,& 8th, one for grade 9 and one for grade 10. The building was not used for a high school but used for an elementary school until about 1960" (interview Blankenship).

When the first sanitation officers were appointed for the county the Galen School was a forerunner in sanitation. The old dipper water bucket method of dispensing water was replaced by a hand pump at the well. A concrete dispenser was built to hold an iron pipe with a half dozen holes placed in the pipe. When the pump was pumped the water was forced through the iron pipe, the water spurted up through the holes in the pipe and about 6 students could drink without having to drink in a unsanitary manner. The first hot lunch program for a rural school in Macon County was started in 1941 at the Galen School (Blankenship interview and hand written notes).

Since closing the school in 1960 the building has been a community center and a voting precinct. Home Demonstration clubs also use the building for meetings (Blankenship interview and hand written notes).

Galen Schoolhouse is associated with the MPDF nomination Education Related Properties of Macon County, Tennessee. It is of a traditional design following the State of Tennessee plan book for schools. It is a local variation of plan 3-B in the 1928 Building Plans For Rural School House (See Attachment # 1). The building retains a high degree of integrity and meets the registration requirements the Macon County MPDF on Rural Schools.



United States Department of the Interior  
National Park Service

National Register of Historic Places  
Continuation Sheet

Section number 9 Page 4

Galen School  
Macon County, TN

---

MAJOR BIOGRAPHICAL REFERENCES

Blankenship, Harold G. Retired School Teacher, Galen, Tennessee. Interview, 22 June 1991.

Blankenship, Harold G. History of Macon County, Tennessee. Tompkinsville, Ky.: Monroe County Press, 1986.

Tennessee Department of Education. Rural School Building Plans. Bulletin No. 1 (Nashville: State Printing Office, 1928), p. 22-23.

United States Department of the Interior  
National Park Service

**National Register of Historic Places  
Continuation Sheet**

Section number 10 Page 5

Galen School  
Macon County, TN

---

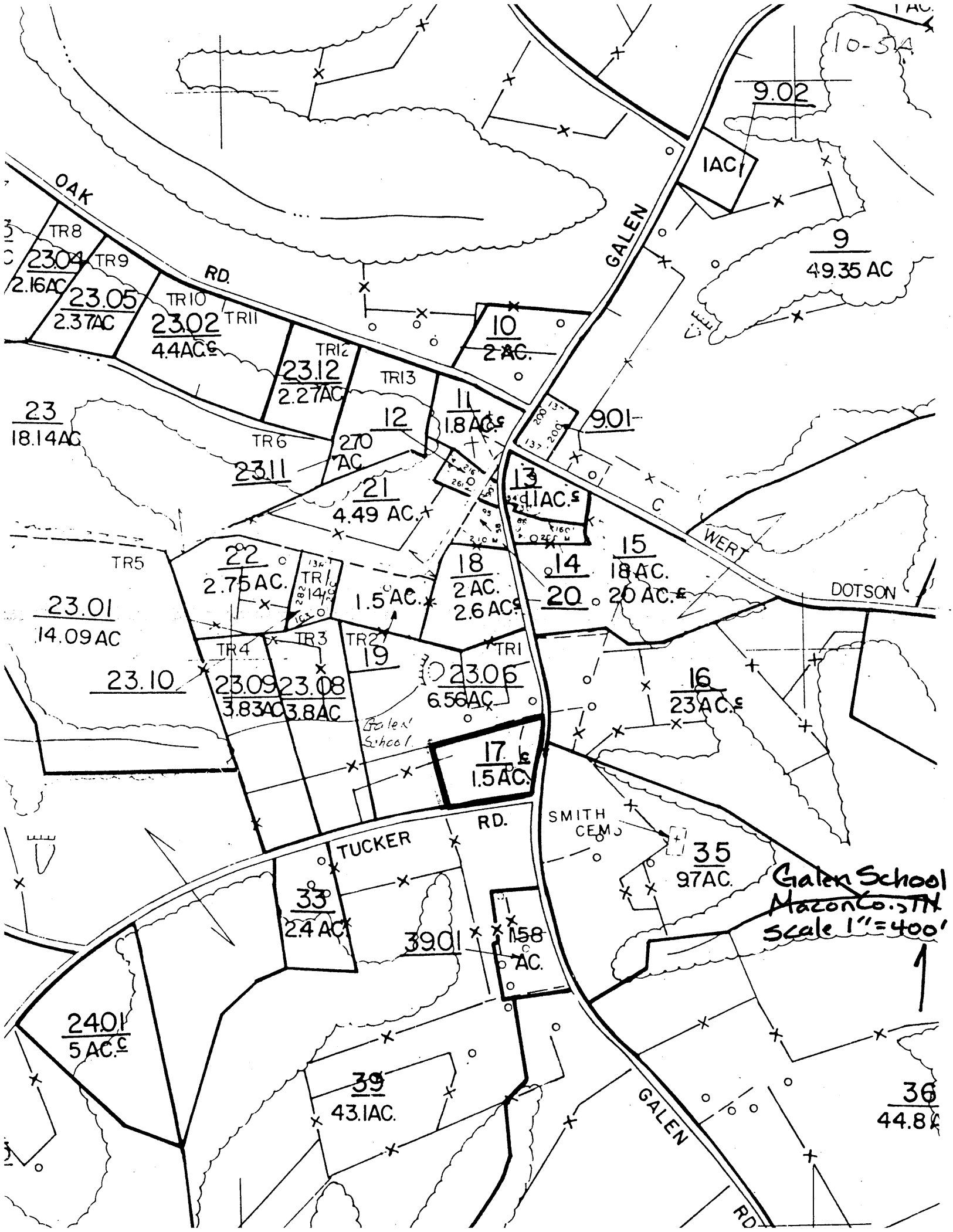
VERBAL BOUNDARY DESCRIPTION

The tax map for this nomination has the scale 1" = 400'. This scale tax map is prepared by the Tennessee State Board of Equalization for rural areas. In the past, the Tennessee Historical Commission has used this scale map for nominations and has found that the 1" = 400' adequately meets our office needs. The Tennessee Historical Commission does not have the facilities to prepare maps to the scale preferred by the National Park Service. To supplement this map, the nomination includes a detailed verbal boundary description.

The boundaries for Galen School include all of lot 17 as shown on the Macon County.

BOUNDARY JUSTIFICATION

The boundaries are sufficient to protect the integrity of the property and include the property historically associated with the school.



Galen School  
Mazon Co. ILL  
Scale 1" = 400'

United States Department of the Interior  
National Park Service

National Register of Historic Places  
Continuation Sheet

Section number Photos Page 6

Galen School  
Macon County, TN

---

Galen School  
Galen vicinity, Macon County, Tennessee  
Photograph by: Nancy Jane Baker  
Date: May 1992  
Negatives: Tennessee Historical Commission

East (front) facade, facing west  
1 of 9

Detail of entrance front east facade, facing west  
2 of 9

South elevation, facing north  
3 of 9

West elevation, facing east  
4 of 9

North elevation, facing south  
5 of 9

Exterior window detail east facade, facing west  
6 of 9

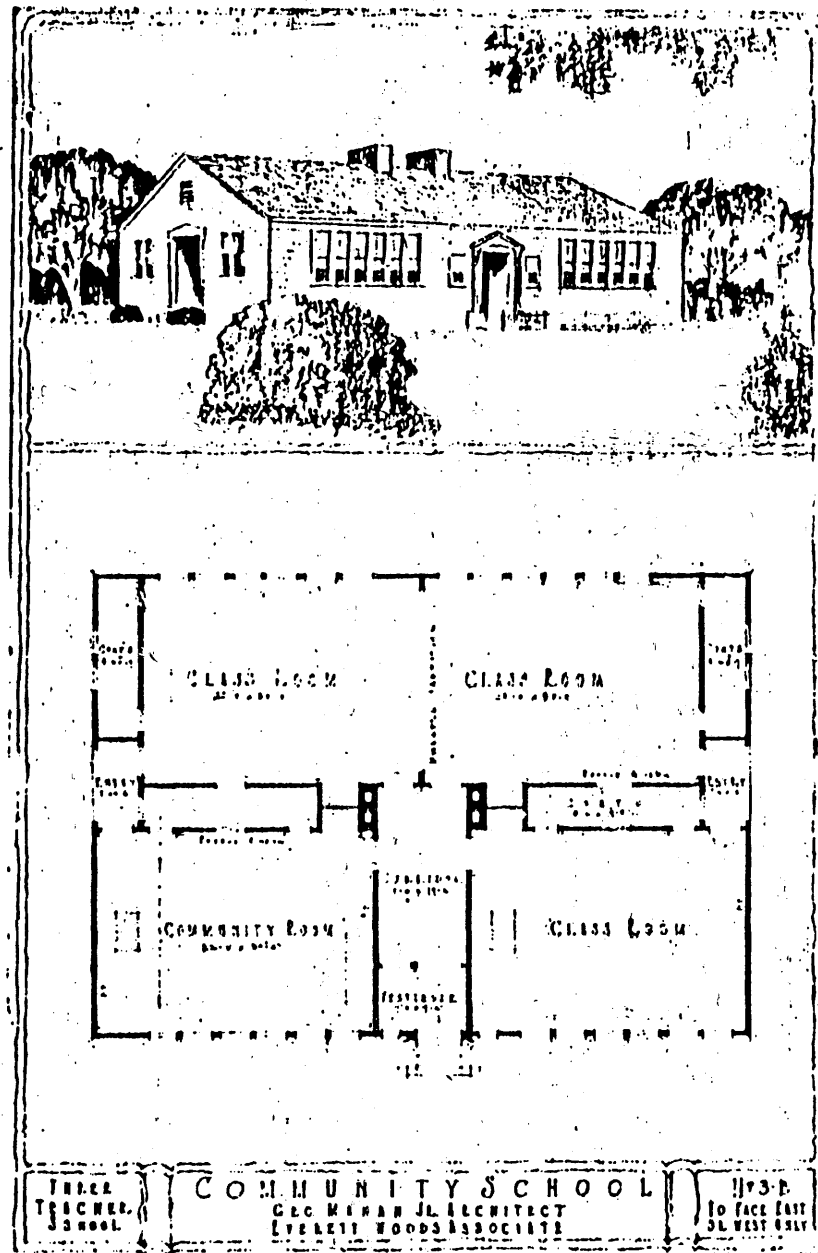
Interior detail of expanding classroom, facing west  
7 of 9

Interior detail of one half of the expanding classroom, blackboard and  
walls, facing southwest  
8 of 9

Interior detail of expanding classroom, facing east  
9 of 9

FIGURE # 1

RURAL SCHOOL BUILDING PLANS



THREE  
TEACHER  
SCHOOL

COMMUNITY SCHOOL

GEO. MERRIN, JR., ARCHITECT  
EVERETT WOODS ASSOCIATE

11' x 3'-0"  
To Face East  
31' WEST ONLY

Three-Teacher School—To Face East or West Only  
No. 3-B