

1

FATHER SERRA CROSS

MEMORIAL PARK

Scale 1" = 400 ft.



COUNTY COURT HOUSE

MISSION PLAZA HISTORIC DISTRICT

34° 16' 56"

113° 18' 00"

C-46

T-16

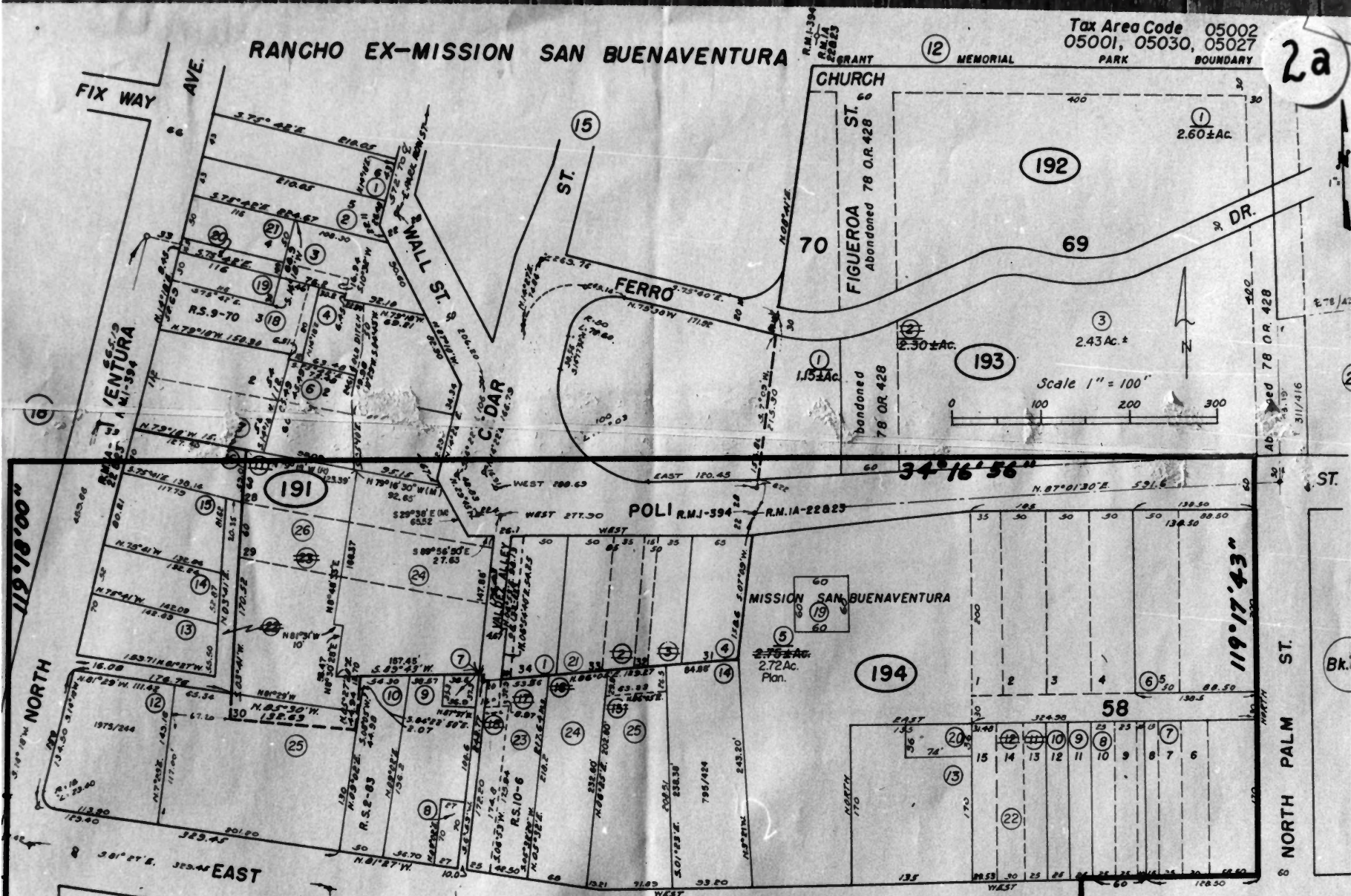
MAP NO. 1

Mission Historic District
San Buenaventura, California

RANCHO EX-MISSION SAN BUENAVENTURA

Tax Area Code 05002
05001, 05030, 05027
PARK BOUNDARY

2a



Bk.73

Oblots Tract, R.M. Bk.1, Pg. 394
San Buena Ventura, City of R.M. 1A Pg. 22823

NOTE - Assessor's Block Numbers Shown in Ellipses
Assessor's Parcel Numbers Shown in Circles

CITY OF SAN BUENAVENTURA
Assessor's Map Bk.71 - Pg. 19
County of Ventura, Calif.

1955

MAP NO. 2a

Mission Historic District
San Buenaventura, California

POR. RANCHO EX-MISSION SAN BUENAVENTURA

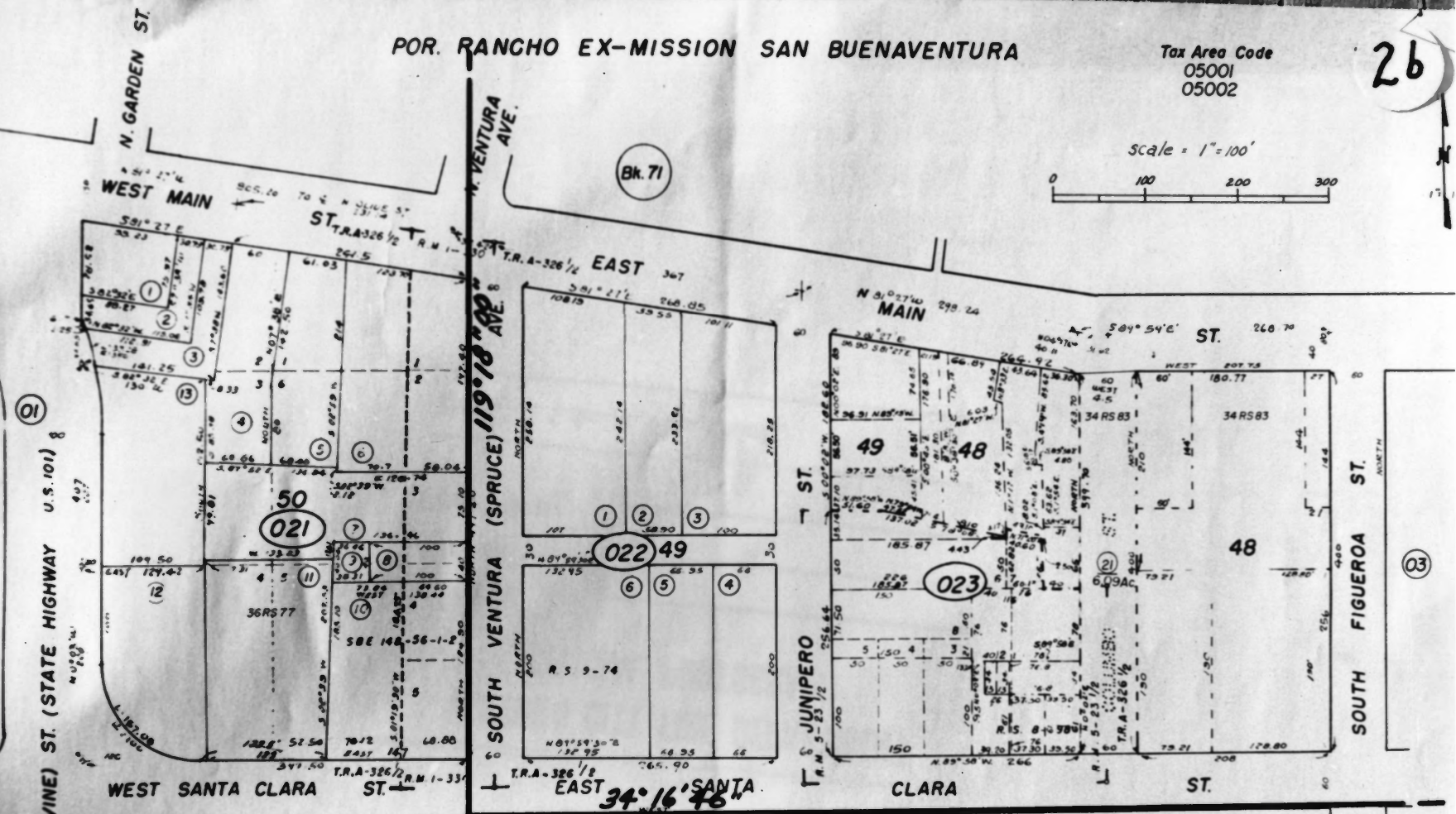
Tax Area Code
05001
05002

26

scale = 1" = 100'



Bk. 71



SOUTH GARDEN (VINE) ST. (STATE HIGHWAY U.S. 101) 8

Mission Palm Subdivision R.M. Bk. 5, Pg. 23 1/2
Mission Orchard Tract, R.M. Bk. 1, Pg. 330
San Buena Ventura, City of, T.R. Bk. A, Pg. 326 1/2 & R.M. Bk. 1A, Pg. 22 & 23

11

CITY OF SAN BUENAVENTURA
Assessor's Map Bk. 73-Pg. 02
County of Ventura, Calif.
1955

NOTE - Assessor's Block Numbers Shown in Ellipses
Assessor's Parcel Numbers Shown in Circles

MAP NO. 2b

Mission Historic District
San Buenaventura, California

Form No. 10-301
Rev. 7-72

UNITED STATES DEPARTMENT OF THE INTERIOR
NATIONAL PARK SERVICE

Map No. 2b

NATIONAL REGISTER OF HISTORIC PLACES

Map No. 2b

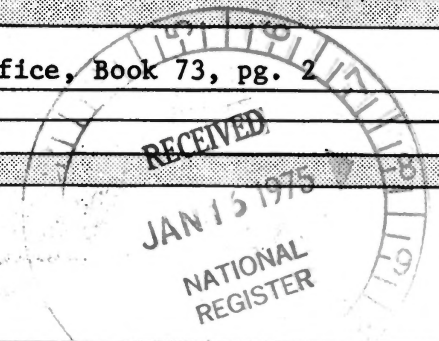
PROPERTY MAP FORM

(Type all entries - attach to or enclose with map)

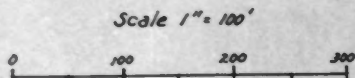
STATE California	
COUNTY Ventura	
FOR NPS USE ONLY	
ENTRY NUMBER APR 10 1975	DATE

SEE INSTRUCTIONS

1. NAME			
COMMON:		The Mission Historic District	
AND/OR HISTORIC:		San Buenaventura Mission	
2. LOCATION			
STREET AND NUMBER:			
Old Mission Church, 211 E' Main St., and District			
CITY OR TOWN:			
San Buenaventura			
STATE:	CODE	COUNTY:	CODE
California	06	Ventura	111
3. MAP REFERENCE			
SOURCE:			
County of Ventura, Assessor's Office, Book 73, pg. 2			
SCALE:			
1:1200			
DATE:			
1955			
4. REQUIREMENTS			
TO BE INCLUDED ON ALL MAPS			
1. Property boundaries where required.			
2. North arrow.			
3. Latitude and longitude reference.			



POR. RANCHO EX-MISSION SAN BUENAVENTURA



ASSESSOR'S MAP Bk. 73 pg. 3

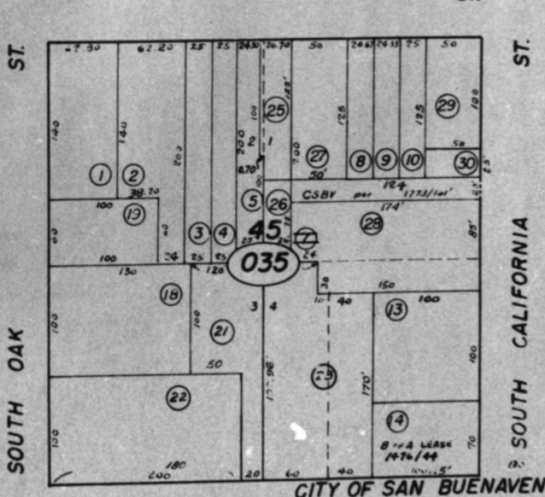
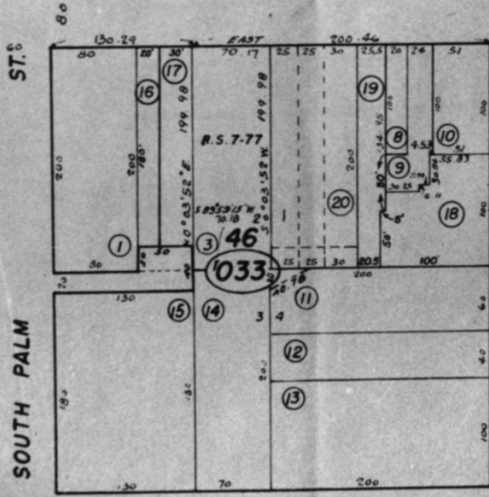
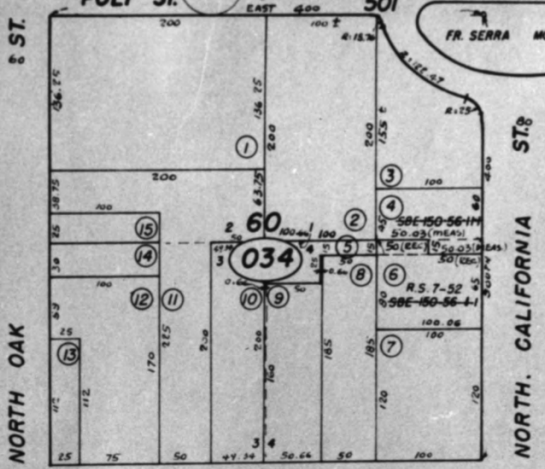
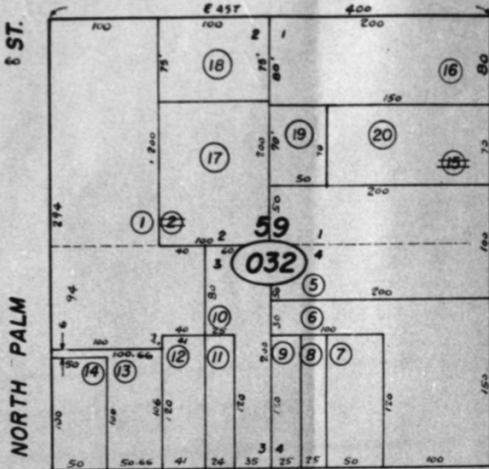
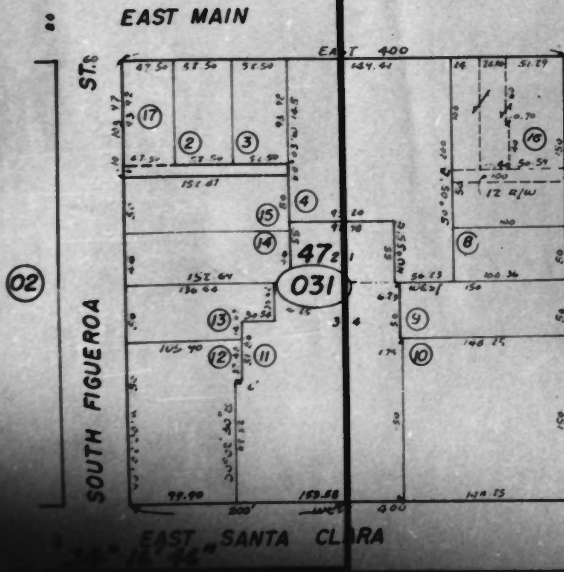
Bk. 71

119° 17' 43"

2c

Tax Area Code 501

FR. SERRA MONUMENT



CITY OF SAN BUENAVENTURA
Assessor's Map Bk. 73-Pg. 03
County of Ventura, Calif.

1955

City of, T.R. Bk. A, Pg. 326 1/2 & R.M.Bk. 1A, Pg. 22 & 23

NOTE - Assessor's Block Numbers Shown in Ellipses
Assessor's Parcel Numbers Shown in Circles

12

04

MAP NO. 2c

Mission Historic District
San Buenaventura, California



PHOTOGRAPH NO. 5

Archaeological site, west of
Church. Foundation of early
Mis

Photo No. 5

Form No. 10-301a
(7/72)

UNITED STATES DEPARTMENT OF THE INTERIOR
NATIONAL PARK SERVICE

**NATIONAL REGISTER OF HISTORIC PLACES
PROPERTY PHOTOGRAPH FORM**

(Type all entries - attach to or enclose with photograph)

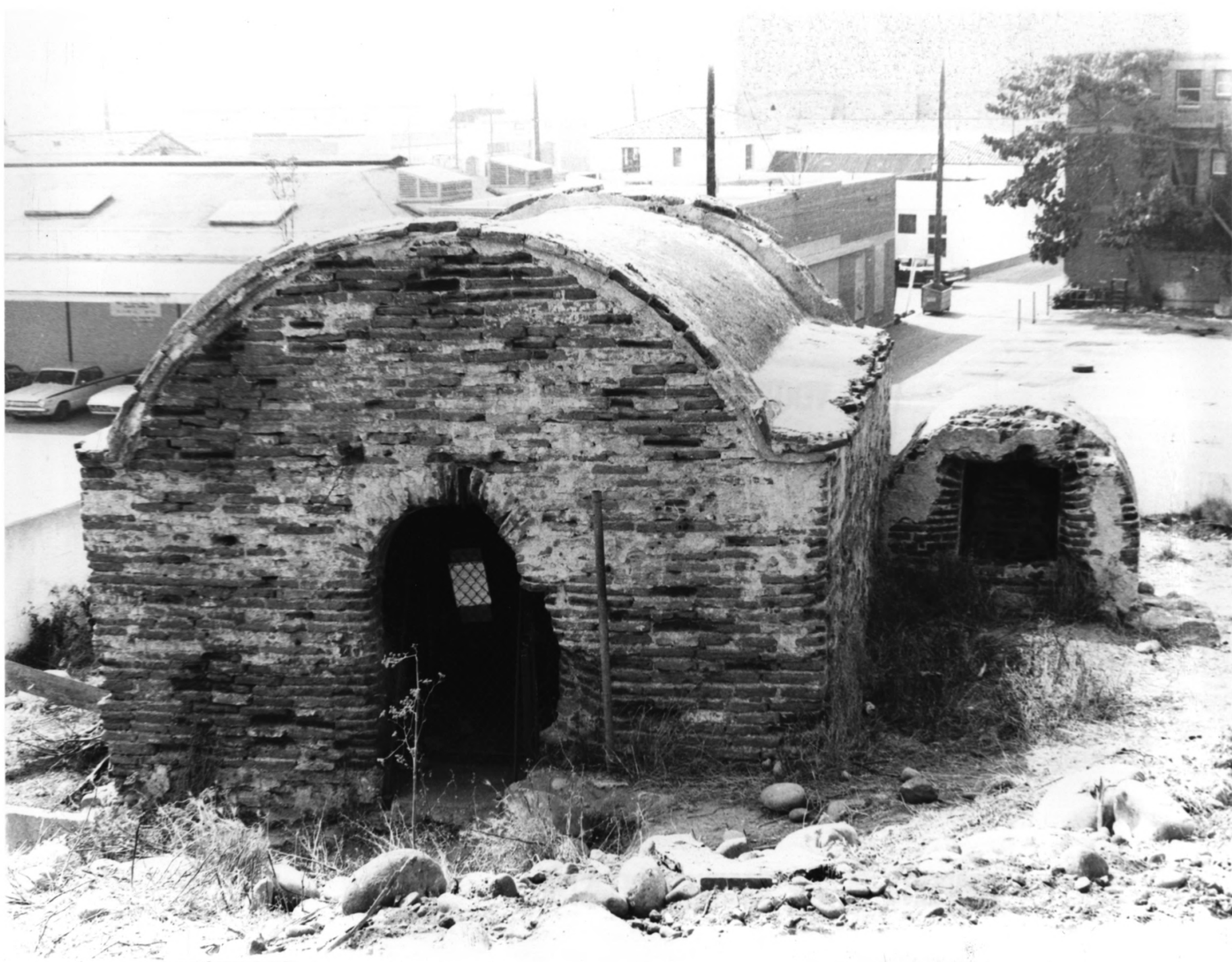
STATE California	
COUNTY Ventura	
FOR NPS USE ONLY	
ENTRY NUMBER	DATE
APR 10 1975	

SEE INSTRUCTIONS

1. NAME			
COMMON: The Mission Historic District		AND/OR HISTORIC: Mission San Buenaventura	
2. LOCATION			
STREET AND NUMBER: Main St., west of Mission school		(Redevelopment acquisition Assessor Parcel Nos. 194-24 and 194-25)	
CITY OR TOWN: Ventura			
STATE: California	CODE 06	COUNTY: Ventura	CODE 111
3. PHOTO REFERENCE			
PHOTO CREDIT: San Buenaventura Historical Preservation Commission		DATE OF PHOTO: September, 1974	
NEGATIVE FILED AT: City Clerk's Office			
4. IDENTIFICATION			
DESCRIBE VIEW, DIRECTION, ETC. View looking south, archaeological site showing early mission foundations. Located approximately 300' west of Old Mission Church			

U.S. GOVERNMENT PRINTING OFFICE: 876-167

PROPERTY OF THE NATIONAL REGISTER



Photograph No. 6

Mission aqueduct settling basin,
west of church.

Form No. 10-301a
(7/72)

UNITED STATES DEPARTMENT OF THE INTERIOR
NATIONAL PARK SERVICE

Photo No. 6

**NATIONAL REGISTER OF HISTORIC PLACES
PROPERTY PHOTOGRAPH FORM**

(Type all entries - attach to or enclose with photograph)

STATE California	
COUNTY Ventura	
FOR NPS USE ONLY	
ENTRY NUMBER	DATE
APR 10 1975	

SEE INSTRUCTIONS

1. NAME			
COMMON:		The Mission Historic District	
AND/OR HISTORIC:		Mission San Buenaventura	
2. LOCATION			
STREET AND NUMBER: Eastwood Park (south of Poli Street, west of Valdez Alley)			
CITY OR TOWN: Ventura			
STATE: California	CODE 06	COUNTY: Ventura	CODE 111
3. PHOTO REFERENCE			
PHOTO CREDIT:		San Buenaventura Historic Preservation Commission	
DATE OF PHOTO:		September, 1974	
NEGATIVE FILED AT:		City Clerk's Office	
4. IDENTIFICATION			
DESCRIBE VIEW, DIRECTION, ETC. View looking west, front face of mission aqueduct settling basin. Located approximately 500' west of Old Mission Church.			

U.S. GOVERNMENT PRINTING OFFICE: 87 6 - 1 67

PROPERTY OF THE NATIONAL REGISTER



PEIRANO'S GROCERY

SANTITAS

WINE

COFFEE

Photograph No. 7

Peirano Store, south of church.
Dating from early American
time period - 1860's

Form No. 10-301a
(7/72)

UNITED STATES DEPARTMENT OF THE INTERIOR
NATIONAL PARK SERVICE

**NATIONAL REGISTER OF HISTORIC PLACES
PROPERTY PHOTOGRAPH FORM**

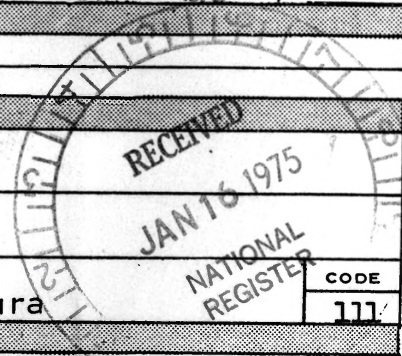
(Type all entries - attach to or enclose with photograph)

Photo No. 7

STATE California	
COUNTY Ventura	
FOR NPS USE ONLY	
ENTRY NUMBER	DATE
	APR 10 1975

SEE INSTRUCTIONS

1. NAME			
COMMON:		The Mission Historic District	
AND/OR HISTORIC:		Mission San Buenaventura	
2. LOCATION			
STREET AND NUMBER: 204 E. Main Street			
CITY OR TOWN: Ventura			
STATE: California		CODE 06	COUNTY: Ventura
3. PHOTO REFERENCE			
PHOTO CREDIT:		San Buenaventura Historic Preservation Commission	
DATE OF PHOTO:		September, 1974	
NEGATIVE FILED AT:		City Clerk's Office	
4. IDENTIFICATION			
DESCRIBE VIEW, DIRECTION, ETC. View looking south east, Peirano Store, dating from the early American time period, 1860's, Located approximately 100' south of Old Mission Church.			



PROPERTY OF THE NATIONAL REGISTER