



Edgemoor Farm Dairy Barn, 9065 Edgemoor Drive,  
Santee, CA 92071

Photographer: Rick Alexander, Dec. 6, 1983—

Negative property of San Diego Association of  
Governments, 1200 Third Avenue, Suite 524, San  
Diego, CA 92101

View of structure from Southeast.

#1 of 1 photos.





SPECIALTY  
SERVICE CENTER  
BY ALL TIMES

Edgemoor Farm Dairy Barn, 9065 Edgemoor Drive,  
Santee, CA 92071

Photographer: Rick Alexander, Dec. 6, 1983—

Negative property of San Diego Association of  
Governments, 1200 Third Avenue, Suite 524, San  
Diego, CA 92101

View of structure from East showing small entry  
door, Dutch gambrel roof detail, and buttresses.

#2 of ■ photos



Edgemoor Farm Dairy Barn, 9065 Edgemoor Drive,  
Santee, CA 92071

Photographer: Rick Alexander, Dec. 6, 1983—

Negative property of San Diego Association of  
Governments, 1200 Third Avenue, Suite 524, San  
Diego, CA 92101

View of structure from West showing ground floor  
entry door and attached shed.

#3 of 4 photos





Edgemoor Farm Dairy Barn, 9065 Edgemoor Drive,  
Santee, CA 92071

Photographer: Rick Alexander, Dec. 6, 1983—

Negative property of San Diego Association of  
Governments, 1200 Third Avenue, Suite 524, San  
Diego, CA 92101

View of structure from Southwest showing all three  
West doors and modifications to South door.

#4 of 4 photos.





- Edgemoor Farm Dairy Barn, 9065 Edgemoor Drive,  
Santee, CA 92071
- Photographer: Rick Alexander, Dec. 6, 1983—  
Negative property of San Diego Association of  
Governments, 1200 Third Avenue, Suite 524, San  
Diego, CA 92101
- View from West of trapeziodal loft doors and  
gambrel eave and peak detail.
- #5 of ■ photos.





PARKING  
IN THIS LOT  
RESTRICTED  
AT ALL TIMES

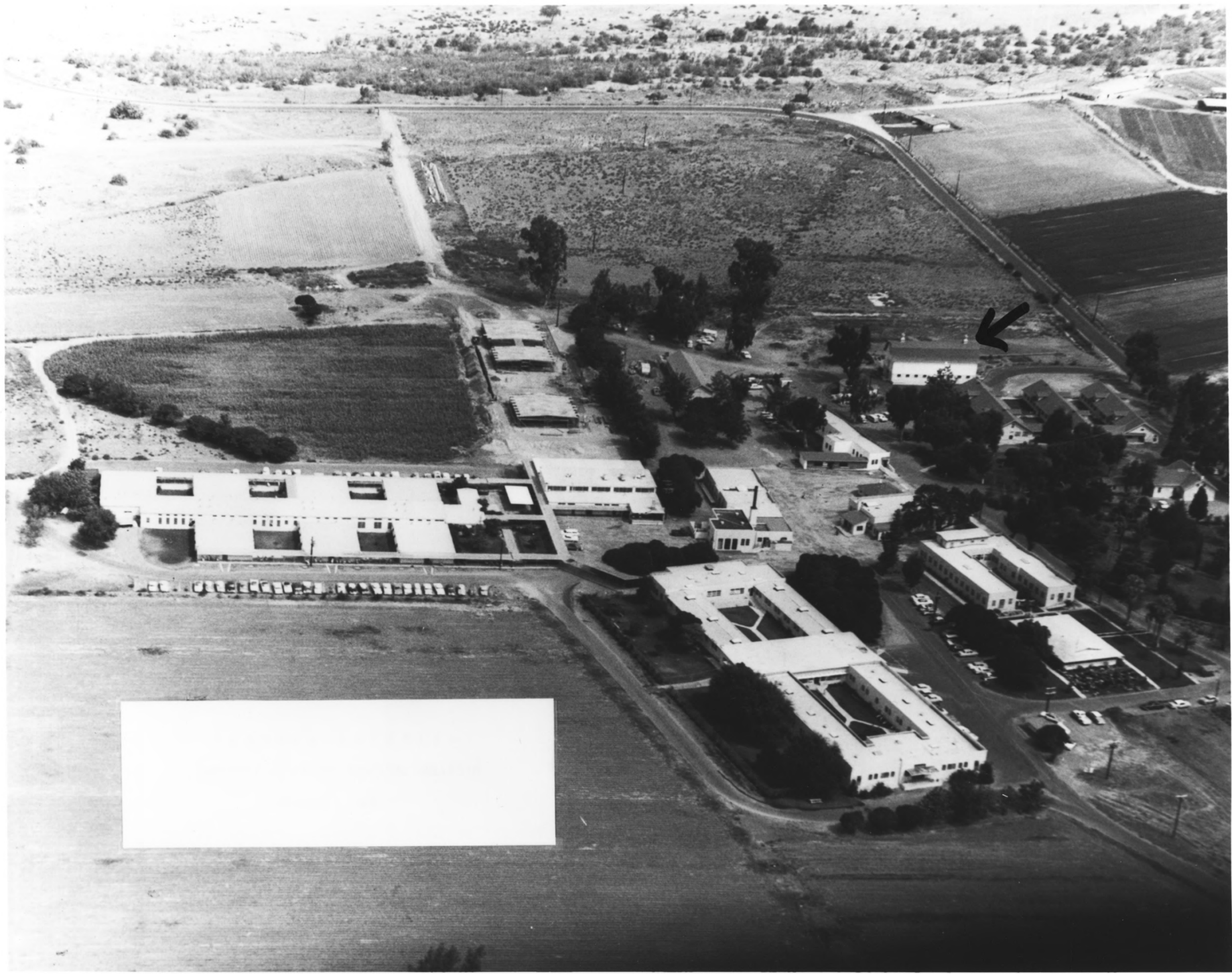
MANAGED BY THE U.S.  
DEPARTMENT OF AGRICULTURE  
FARMERS' MARKET  
SOLUTIONS TO PROBLEMS  
AND THE  
DEPT. OF AGRICULTURE

- Edgemoor Farm Dairy Barn, 9065 Edgemoor Drive, Santee, CA 92071
- Photographer: Rick Alexander, Dec. 6, 1983—  
Negative property of San Diego Association of Governments, 1200 Third Avenue, Suite 524, San Diego, CA 92101
- View from East showing buttress and detail of exterior plumbing for Grinnel fire extinguisher system.
- #6 of 13 photos.





- Edgemoor Farm Dairy Barn, 9065 Edgemoor Drive, Santee, CA 92071
- Photographer: Rick Alexander, Dec. 6, 1983—
- Negative property of San Diego Association of Governments, 1200 Third Avenue, Suite 524, San Diego, CA 92101
- Detail of East cupola/ventilation with weather vane.
- #7 of <sup>13</sup> photos.



- Edgemoor Farm Dairy Barn, 9065 Edgemoor Drive, Santee, CA 92071
- Photographer: Rick Alexander, Dec. 6, 1983--  
Negative property of San Diego Association of Governments, 1200 Third Avenue, Suite 524, San Diego, CA 92101
- Aerial photo of Edgemoor Geriatric Hospital in 1960--Dairy Barn is marked.
- #8 of 8 photos





- Edgemoor Farm Dairy Barn, 9065 Edgemoor Drive, Santee, CA 92071
- Photographer: Rick Alexander, Negative property of San Diego Association of Governments, 1200 Third Avenue, Suite 524, San Diego, CA 92101
- View of ground floor showing original concrete stalls now used for storage.
- #9 of 13 photos.



- Edgemoor Farm Dairy Barn, 9065 Edgemoor Drive, Santee, CA 92071
- Photographer: Rick Alexander, Negative property of San Diego Association of Governments, 1200 Third Avenue, Suite 524, San Diego, CA 92101
- View of roof, rafter and wall detail on upper floor; east wall.
- #10 of 13 photos.





FIRE EXTINGUISHER

LOCK  
DRIVING  
HERE

- Edgemoor Farm Dairy Barn, 9065 Edgemoor Drive, Santee, CA 92071
- Photographer: Rick Alexander, Negative property of San Diego Association of Governments, 1200 Third Avenue, Suite 524, San Diego, CA 92101
- View of west end of upper floor showing grainbins, lower loft door and chain hoist.
- #11 of 13 photos.



Edgemoor Farm Dairy Barn, 9065 Edgemoor Drive,  
Santee, CA 92071

Photographer: Rick Alexander, Negative property  
of San Diego Association of Governments, 1200  
Third Avenue, Suite 524, San Diego, CA 92101

Detail of fir trusswork on south wall/upper floor.  
Redwood siding is also shown.

#12 of 13 photos.





- Edgemoor Farm Dairy Barn, 9065 Edgemoor Drive, Santee, CA 92071
- Photographer: Rick Alexander, Negative property of San Diego Association of Governments, 1200 Third Avenue, Suite 524, San Diego, CA 92101
- Walter H. Dupee, Owner of Edgemoor Farm and builder of Dairy Barn: from San Diego County, California - A Record of Settlement, Organization, Progress, Achievement, Chicago, 1913, S. J. Clarke Co.
- #13 of 13 photos.