



FOR
LEASING
PROPERTY
WITH THE
HIGHEST
RENTAL IN
AMERICA
229 7181

Gray & Co.
629-6127

Jantzen Knitting Mills Building
540 NE 19th Avenue
Portland, Multnomah County, Oregon 97232

John M. Tess Photographer, 1991
HERITAGE INVESTMENT CORPORATION
123 NW Second Avenue # 200
Portland, Oregon 97209

of 15

South and East Elevations Looking Northwest



Jantzen Knitting Mills Building
540 NE 19th Avenue
Portland, Multnomah County, Oregon 97232

John M. Tess Photographer, 1991
HERITAGE INVESTMENT CORPORATION
123 NW Second Avenue, # 200
Portland, Oregon 97209

of 15

South and West Elevations Looking Northeast



SHIPPING
RECEIVING

NO CASH PAYMENT
NO CASH CHANGE

Jantzen Knitting Mills Building
540 NE 19th Avenue
Portland, Multnomah County, Oregon 97232

John M. Tess Photographer, 1991
HERITAGE INVESTMENT CORPORATION
123 NW Second Avenue, #200
Portland, Oregon 97209

3 of 15

Typical ground entrance West elevation



Jantzen Knitting Mills Building
540 NE 19th Avenue
Portland, Multnomah County, Oregon 97232

John M. Tess Photographer, 1991
HERITAGE INVESTMENT CORPORATION
123 NW Second Avenue, #200
Portland, Oregon 97209

4 of 15

West elevation looking south



Jantzen Knitting Mills Building
540 NE 19th Avenue
Portland, Multnomah County, Oregon 97232

John M. Tess Photographer, 1991
HERITAGE INVESTMENT CORPORATION
123 NW Second Avenue, #200
Portland, Oregon 97209

5 of 15

North elevation looking south



Jantzen Knitting Mills Building
540 NE 19th Avenue
Portland, Multnomah County, Oregon 97232

John M. Tess Photographer, 1991
HERITAGE INVESTMENT CORPORATION
123 NW Second Avenue, #200
Portland, Oregon 97209

6 of 15

East elevation looking southwest



NO
OFFICE
OFFICE

Jantzen Knitting Mills Building
540 NE 19th Avenue
Portland, Multnomah County, Oregon 97232

John M. Tess Photographer, 1991
HERITAGE INVESTMENT CORPORATION
123 NW Second Avenue, #200
Portland, Oregon 97209

7 of 15

East elevation looking west



Jantzen Knitting Mills Building
540 NE 19th Avenue
Portland, Multnomah County, Oregon 97232

John M. Tess Photographer, 1991.
HERITAGE INVESTMENT CORPORATION
123 NW Second Avenue, #200
Portland, Oregon 97209

8 of 15

Exterior detail



Jantzen Knitting Mills Building
540 NE 19th Avenue
Portland, Multnomah County, Oregon 97232

John M. Tess Photographer, 1991
HERITAGE INVESTMENT CORPORATION
123 NW Second Avenue, #200
Portland, Oregon 97209

9 of 15

Exterior detail



Jantzen Knitting Mills Building
540 NE 19th Avenue
Portland, Multnomah County, Oregon 97232

John M. Tess Photographer, 1991
HERITAGE INVESTMENT CORPORATION
123 NW Second Avenue, #200
Portland, Oregon 97209

10 of 15

First floor interior



Jantzen Knitting Mills Building
540 NE 19th Avenue
Portland, Multnomah County, Oregon 97232

John M. Tess Photographer, 1991
HERITAGE INVESTMENT CORPORATION
123 NW Second Avenue, #200
Portland, Oregon 97209

11 of 15

First floor interior



Jantzen Knitting Mills Building
540 NE 19th Avenue
Portland, Multnomah County, Oregon 97232

John M. Tess Photographer, 1991
HERITAGE INVESTMENT CORPORATION
123 NW Second Avenue, #200
Portland, Oregon 97209

12 of 15

First floor interior



Jantzen Knitting Mills Building
540 NE 19th Avenue
Portland, Multnomah County, Oregon 97232

John M. Tess Photographer, 1991
HERITAGE INVESTMENT CORPORATION
123 NW Second Avenue, #200
Portland, Oregon 97209

13 of 15

Second floor interior



Jantzen Knitting Mills Building
540 NE 19th Avenue
Portland, Multnomah County, Oregon 97232

John M. Tess Photographer, 1991
HERITAGE INVESTMENT CORPORATION
123 NW Second Avenue, #200
Portland, Oregon 97209

14 of 15

Second Floor Interior

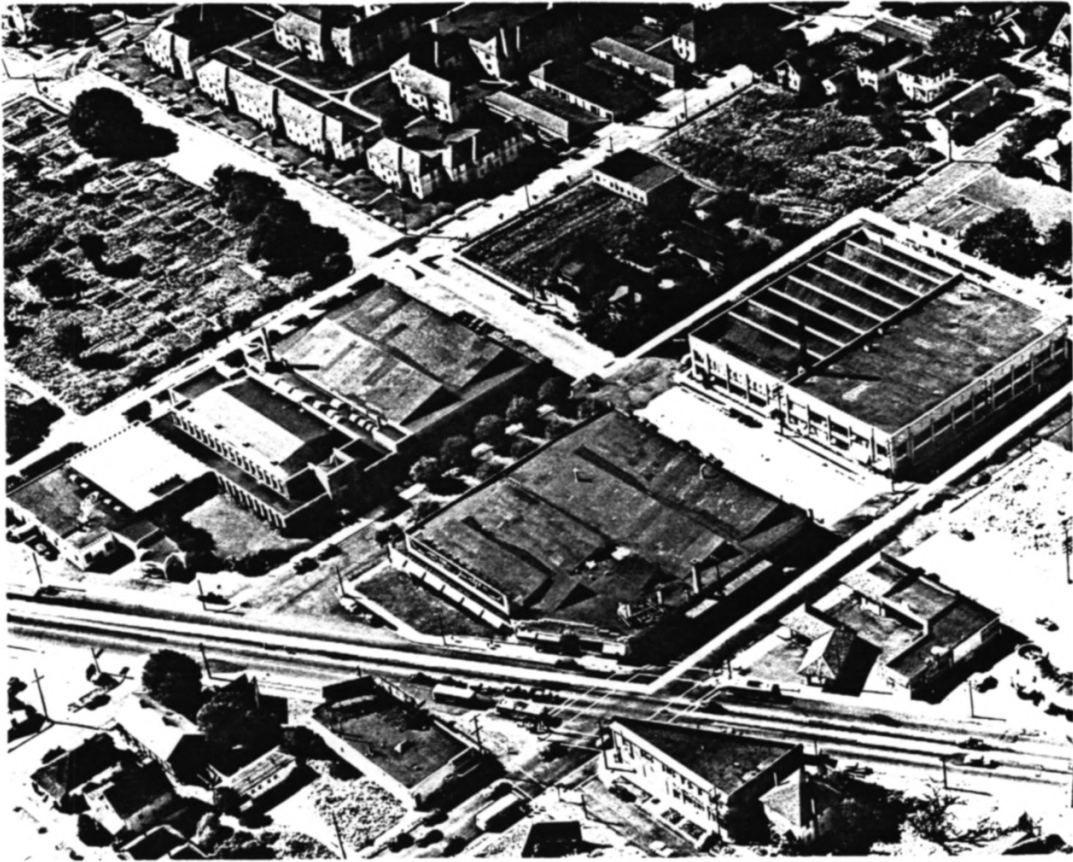


Jantzen Knitting Mills Building
540 NE 19th Avenue
Portland, Multnomah County, Oregon 97232

John M. Tess Photographer, 1991
HERITAGE INVESTMENT CORPORATION
123 NW Second Avenue, #200
Portland, Oregon 97209

15 of 15

Second Floor Interior



Jantzen Knitting Mill, Portland, Oregon
Photographer unknown, date unknown
Negative held by Oregon Historical Society #OrHi 80393

Aerial view of Jantzen Knitting Mill taken between 1937 and 1946 showing 1929 stage one building and 1937 stage two building as principal manufacturing structures on Jantzen site. Simon building is shown in foreground with 1928 administration building to the left. Historic photo #1



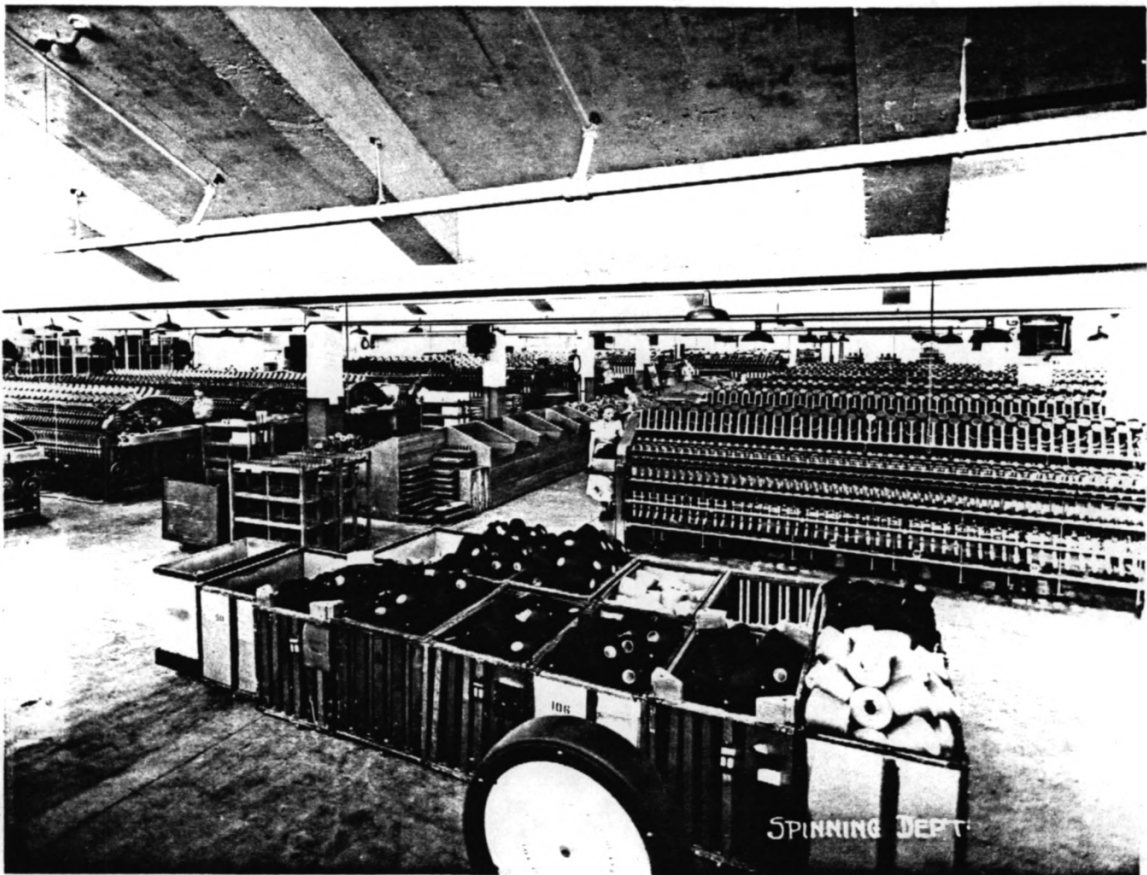
Jantzen Knitting Mill, Portland, Oregon
Photographer unknown, date unknown
Negative held by Oregon Historical Society #OrHi 46827

View looking northeast of the 1929 stage one building from southwest corner of intersection of NE 19th Avenue and Glisan Street, showing original pilaster rhythm, window bays, decorative elements. Both entrances are still in use, although lower steel sash has been altered. Historic photo #2



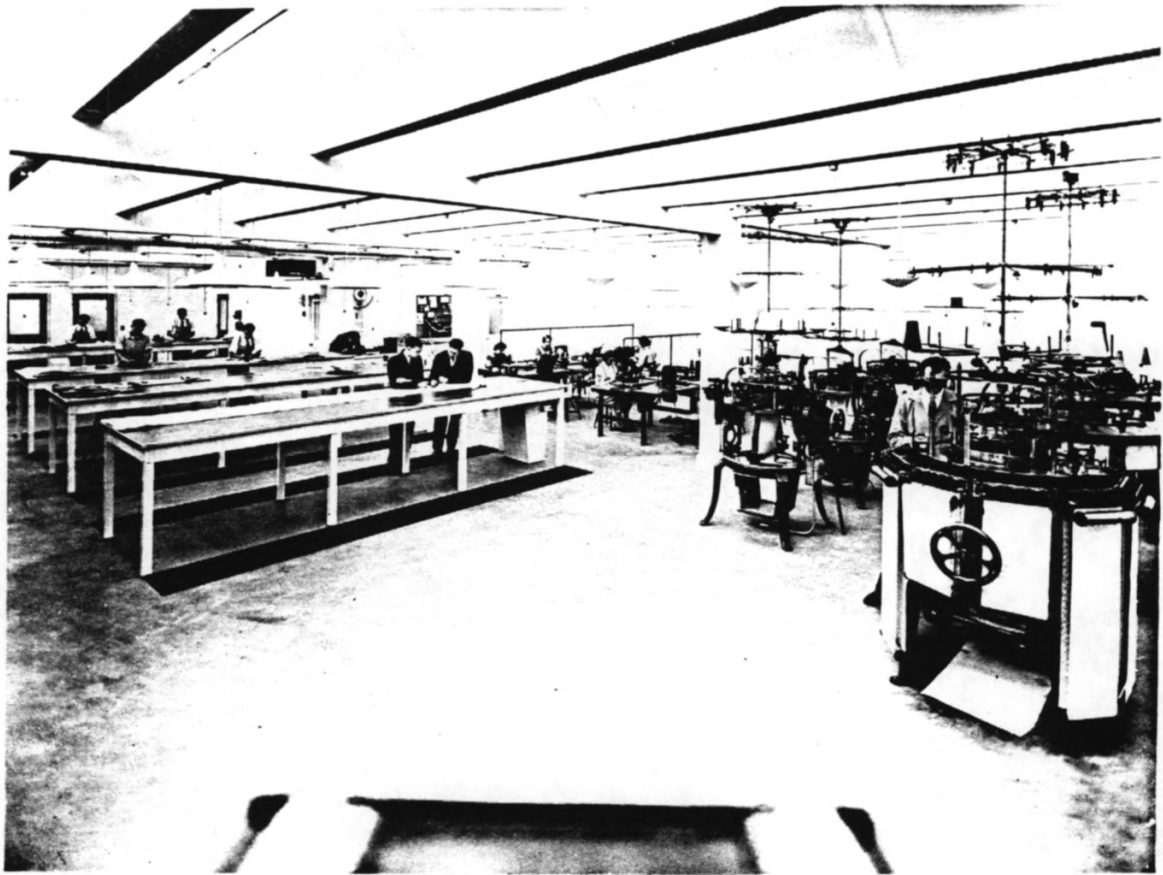
Jantzen Knitting Mill, Portland, Oregon
Photographer unknown, date unknown
Negative held by Oregon Historical Society #OrHi 69886

View of original dyeing room which had an estimated capacity
for dyeing wool yarn of 4332 pounds in a 24 hour period.
Historic photo #3



Jantzen Knitting Mill, Portland, Oregon
Photographer unknown, date unknown
Negative held by Oregon Historical Society OrHi #69888

Interior view looking south on the second floor of the 1929 first stage building showing north light from sawtooth roof with clerestory skylights. The estimated capacity was 2000 to 6000 pounds of wool in a 24 hour period. Historic photo #4



Jantzen Knitting Mill, Portland, Oregon
Photographer unknown, 1937
Negative held by Oregon Historical Society OrHi #69885

View of the style development department. Machinery at left was used to test swim wear through immersion and stress tests. Historic photo #5



Jantzen Knitting Mill, Portland, Oregon
Photographer unknown, date unknown
Negative held by Oregon Historical Society OrHi #46854

Aerial view of completed knitting mill showing varied roof forms dictated by interior use requirements, common exterior with pilaster rhythm, window bays, common cornice line and zigzag decoration. Historic photo #6



Jantzen Knitting Mill, Portland, Oregon
Ted R. Schneider Co., 1987
Negative held by photographer

View looking north along NE 20th Avenue at Sandy Boulevard, Simon building of 1921 in left foreground, Jantzen Knitting Mill behind. View shows regularly spaced pilasters on east elevation, stepped sill, common cornice line. Photo #1



Jantzen Knitting Mill, Portland, Oregon
Ted R. Schneider Co., 1987
Negative held by photographer

View look east on NE Glisan Street showing minor administrative building in foreground, with Jantzen Knitting Mill beyond. View shows dominance of Mill building, common building height of all stages, decorative elements. Photo #2



Jantzen Knitting Mill, Portland, Oregon
Ted R. Schneider Co., 1987
Negative held by photographer

View looking west on NE Glisan Street showing Simon building to the left, minor garment finishing building beyond. Jantzen Knitting Mill at right foreground, showing building scale, prominence in the area, decorative elements, primary windows, diving girl medallion. Photo #3



Jantzen Knitting Mill, Portland, Oregon
Ted R. Schneider Co., 1987
Negative held by photographer

View looking northwest at the intersection of 20th Avenue and NE Glisan Street showing recessed corner treatment, decorative elements, change in base sill and rhythm of pilasters at third stage building of 1946, entrance canopy, common cornice height and decoration. Photo #4



Jantzen Knitting Mill, Portland, Oregon
Ted R. Schneider Co., 1987
Negative held by photographer

View looking west showing juncture of stage two building of 1937 and stage three building of 1946, with change in base sill, intermediate pilasters, common decoration, cornice height and zigzag. Photo #5



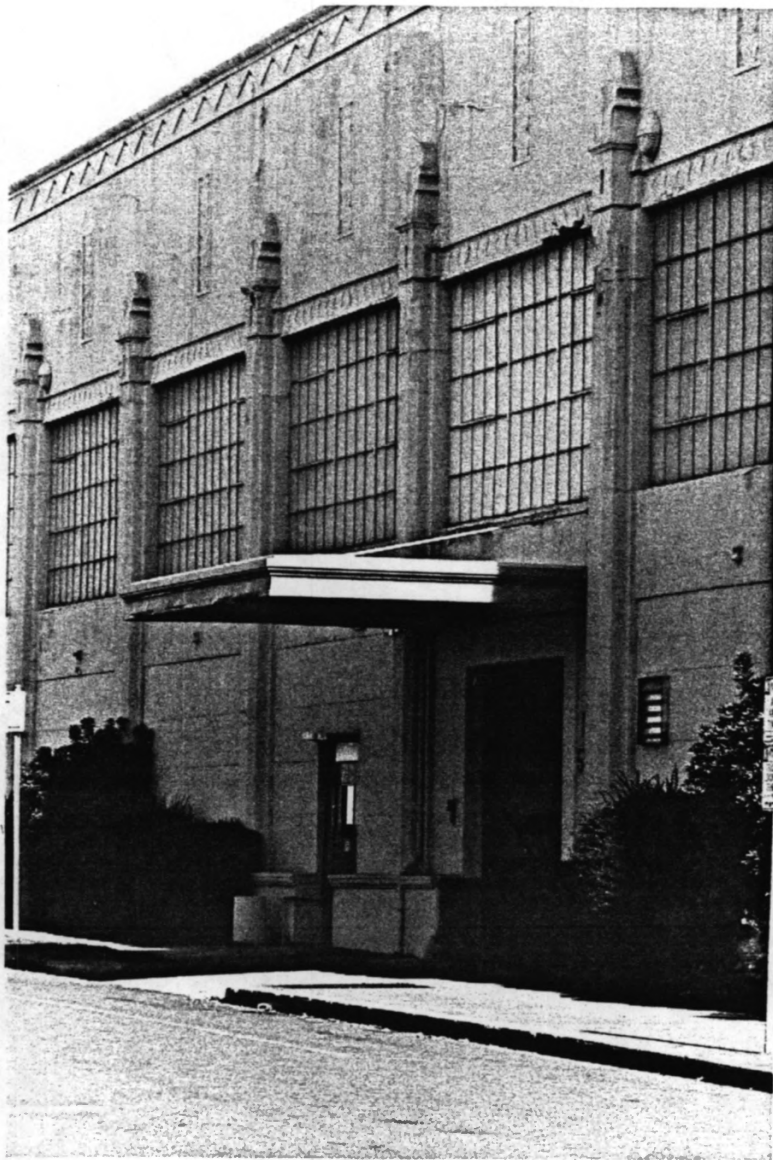
Jantzen Knitting Mill, Portland, Oregon
Ted R. Schneider Co., 1987
Negative held by photographer

View looking southwest showing pilaster rhythm on east elevations of stage two building of 1937 and stage three building of 1946, common decoration, cornice line and height. View shows blank north wall of stage three building. Photo #6



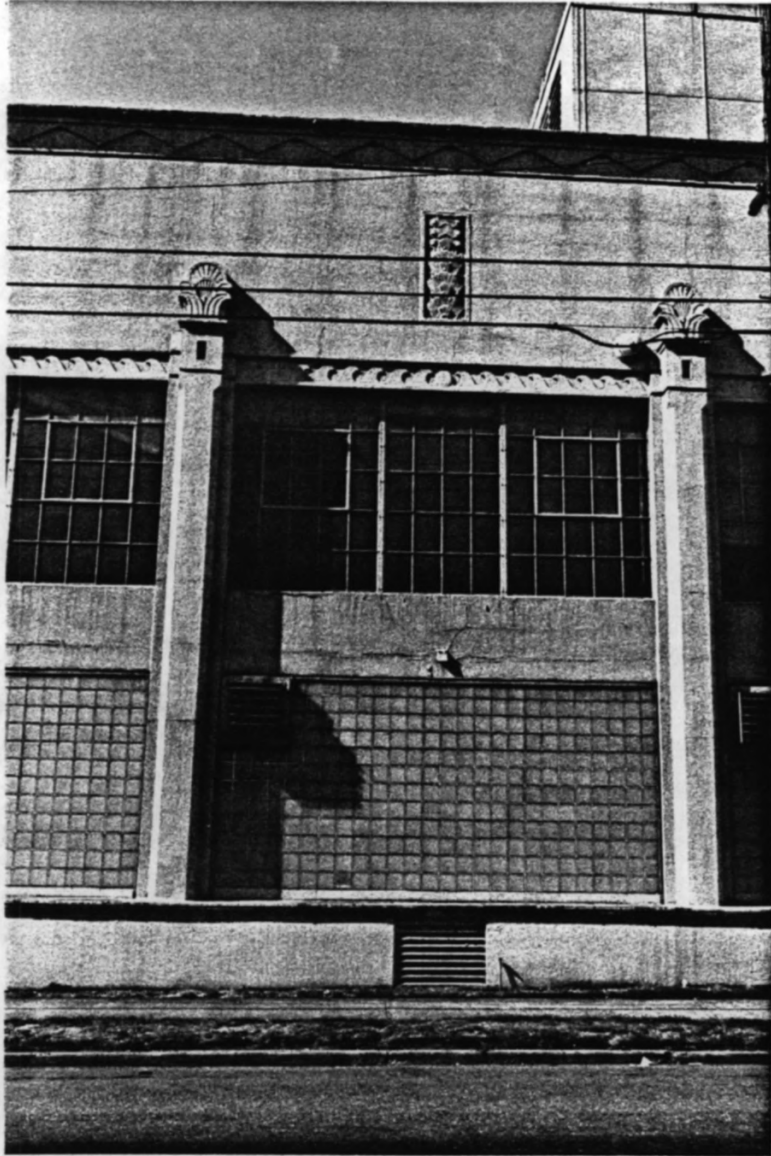
Jantzen Knitting Mill, Portland, Oregon
Ted R. Schneider Co., 1987
Negative held by photographer

View looking northeast showing first stage building of 1929, with primary windows, recessed corner, common cornice line and decoration, entrance canopy. View shows integration of building elements in first stage building of 1929 with third stage building of 1946. Photo #7



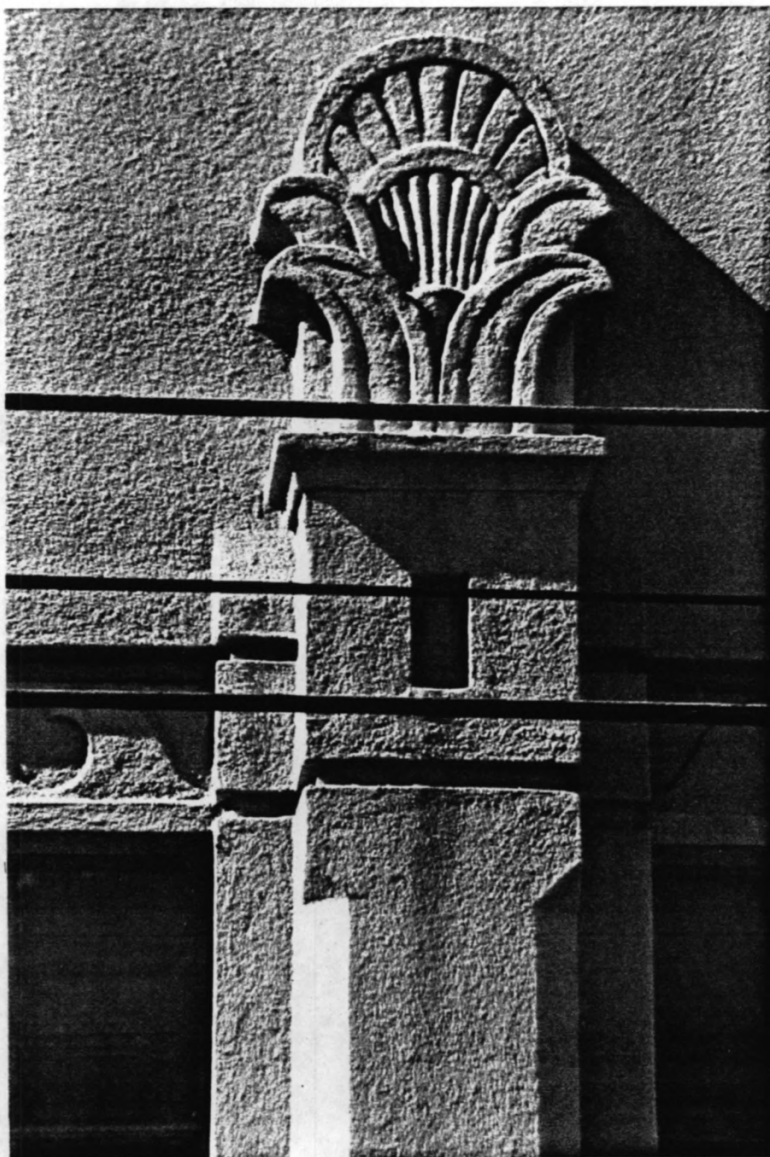
Jantzen Knitting Mill, Portland, Oregon
Ted R. Schneider Co., 1987
Negative held by photographer

Exterior detail of entrance door, canopy, building
decoration, primary windows. Photo #8



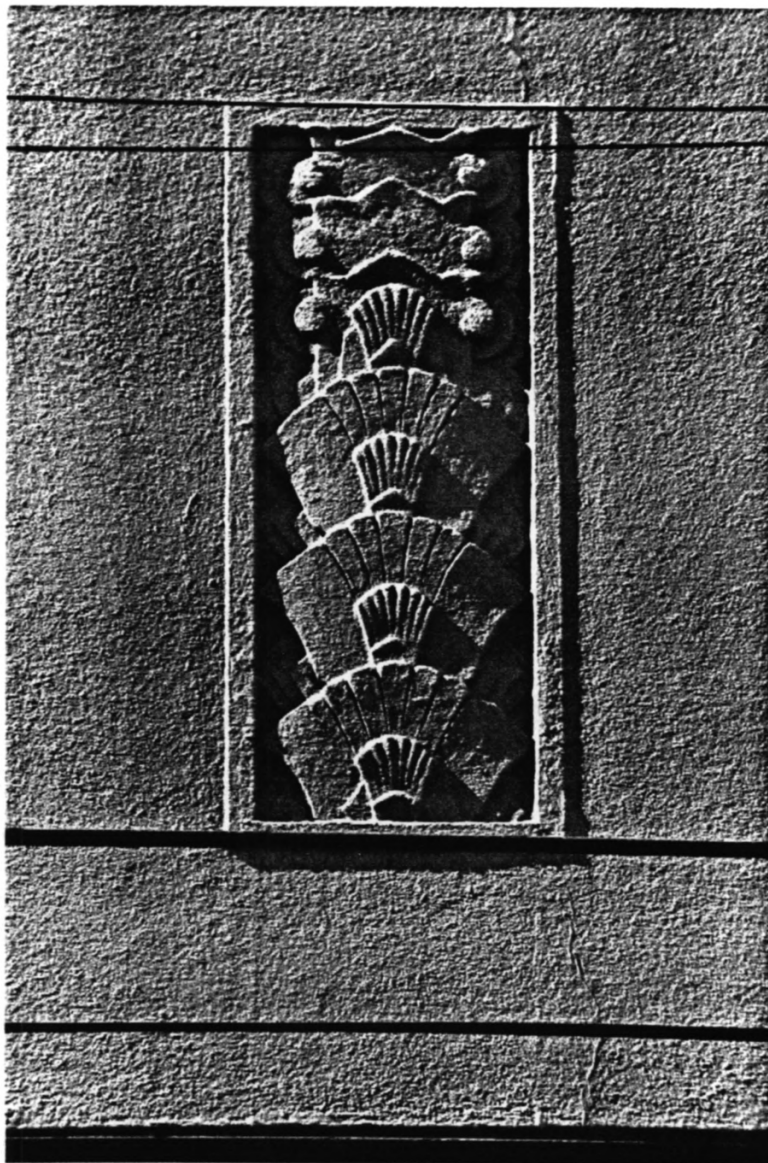
Jantzen Knitting Mill, Portland, Oregon
Ted R. Schneider Co., 1987
Negative held by photographer

Exterior detail of window bay, crested wave decoration
between pilasters, capitals with decorative panel at
mid-point above, zigzag cornice line. Photo #9



Jantzen Knitting Mill, Portland, Oregon
Ted R. Schneider Co., 1987
Negative held by photographer

Exterior detail of decorative capital showing stylized scallop shell, 'wave' motif, crested wave decoration at left below, pilaster detail shown chamfered edge.
Photo #10



Jantzen Knitting Mill, Portland, Oregon
Ted R. Schneider Co., 1987
Negative held by photographer

Exterior detail showing decorative rectangular panel located between and above pilaster capitals. View shows stylized scallop shells, progressive fans. Photo #11



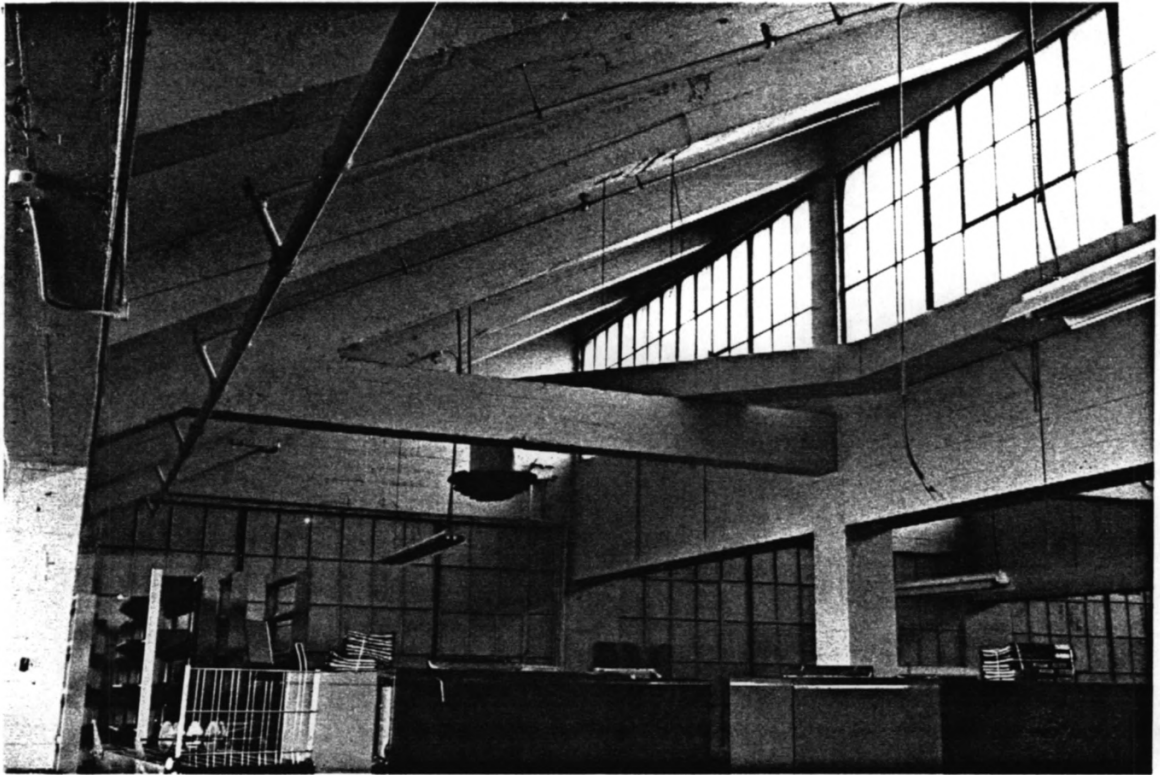
Jantzen Knitting Mill, Portland, Oregon
Ted R. Schneider Co., 1987
Negative held by photographer

Exterior detail showing Jantzen's diving girl low-relief medallion from 1929 first stage building. All decoration common to three stages of construction of the Knitting Mill are from the 1929 molds. Photo #12



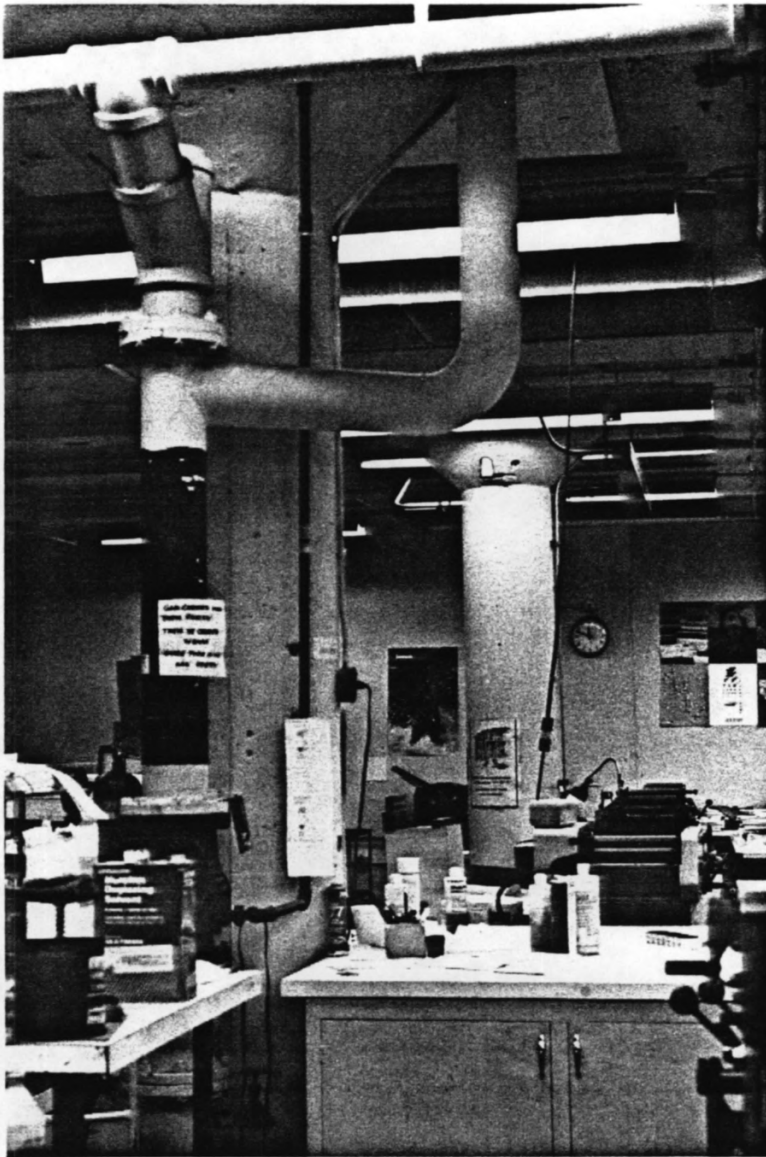
Jantzen Knitting Mill, Portland, Oregon
Ted R. Schneider Co., 1987
Negative held by photographer

Interior view of first stage building construction in 1929.
View showing saw tooth clerestory skylights and primary
windows at the sidewall. Straight forward reinforced
concrete industrial construction evident. Photo #13



Jantzen Knitting Mill, Portland, Oregon
Ted R. Schneider Co., 1987
Negative held by photographer

Interior view of first stage 1929 building, showing
detail of sawtooth roof construction, primary windows,
structure. Photo #14



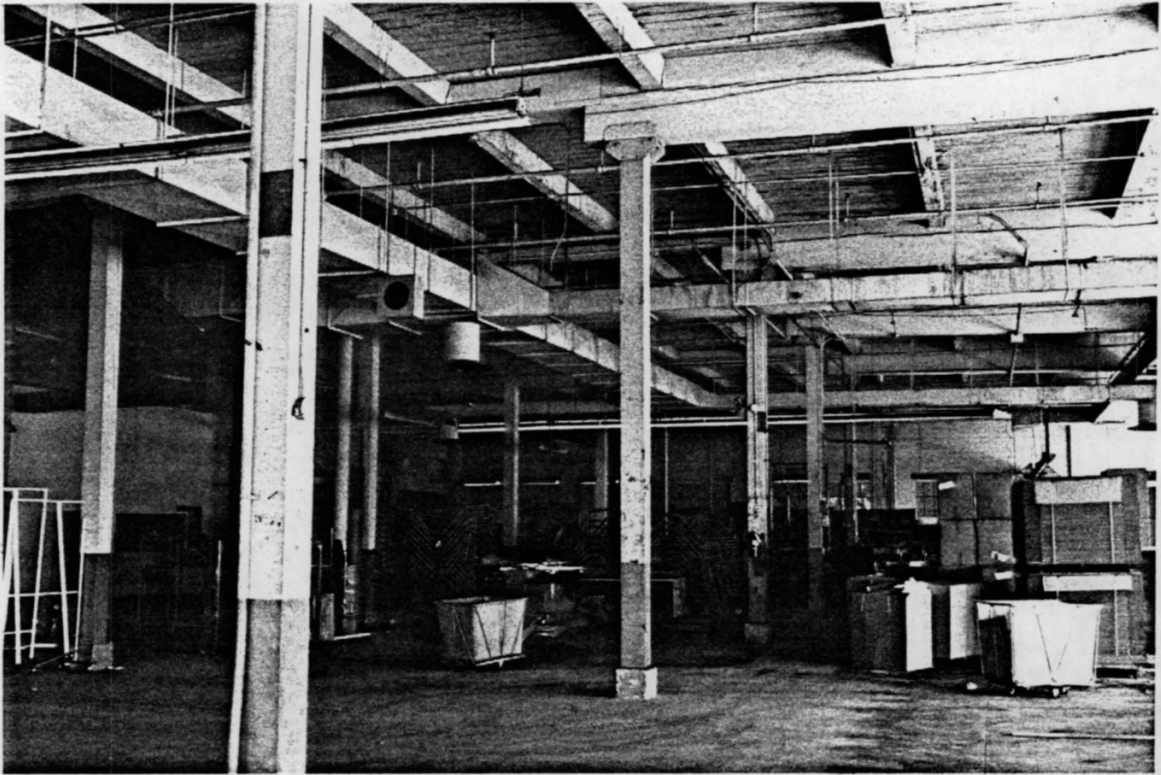
Jantzen Knitting Mill, Portland, Oregon
Ted R. Schneider Co., 1987
Negative held by photographer

Interior view first floor structure of the first stage
building of 1929. Photo #15



Jantzen Knitting Mill, Portland, Oregon
Ted R. Schneider Co., 1987
Negative held by photographer

Interior view on the second floor of the second stage building of 1937 showing primary windows, heavy timber construction, columns, concrete floor, wood plank roof.
Photo #16



Jantzen Knitting Mill, Portland, Oregon
Ted R. Schneider Co. 1987
Negative held by photographer

Interior view on the second floor of the second stage building of 1937. View shows heavy timber framing, including unusual reduced beam depth at the center of span, column caps, and wood plank roofing. Photo #17



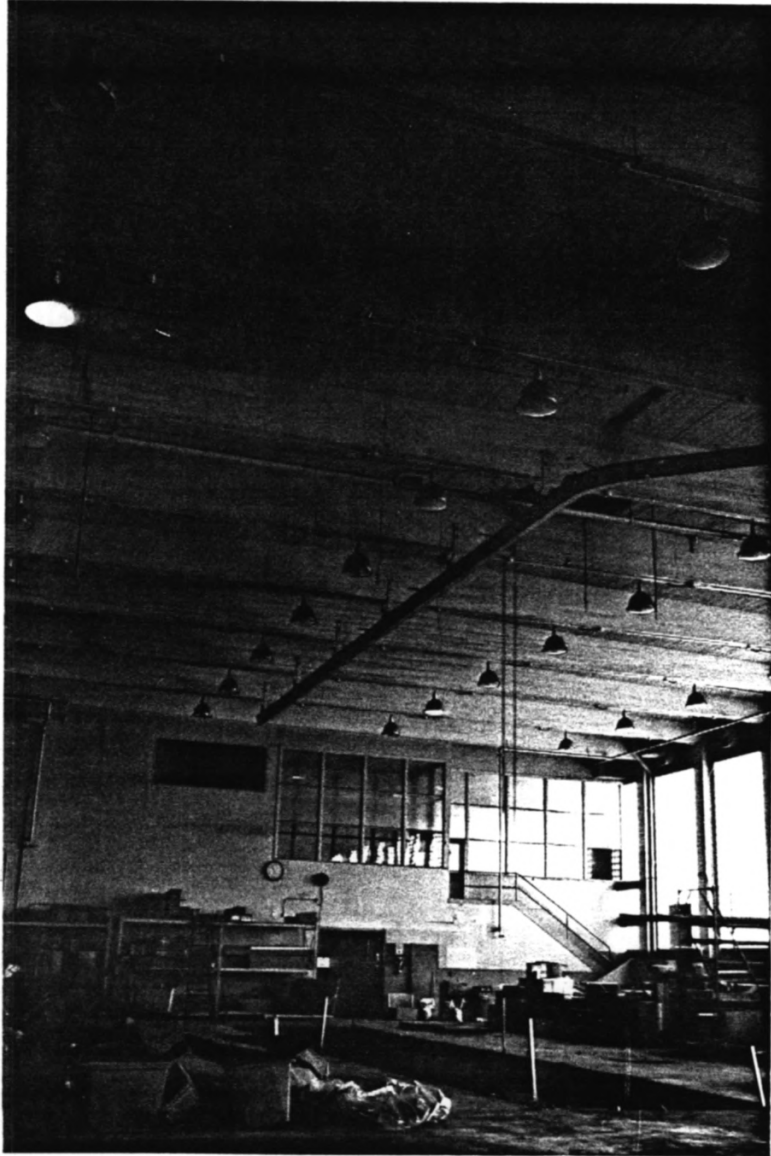
Jantzen Knitting Mill, Portland, Oregon
Ted R. Schneider Co., 1987
Negative held by photographer

Interior view on first floor of second stage 1937
building showing column, flared capital, increased
slab depth for machinery loads. Photo #18



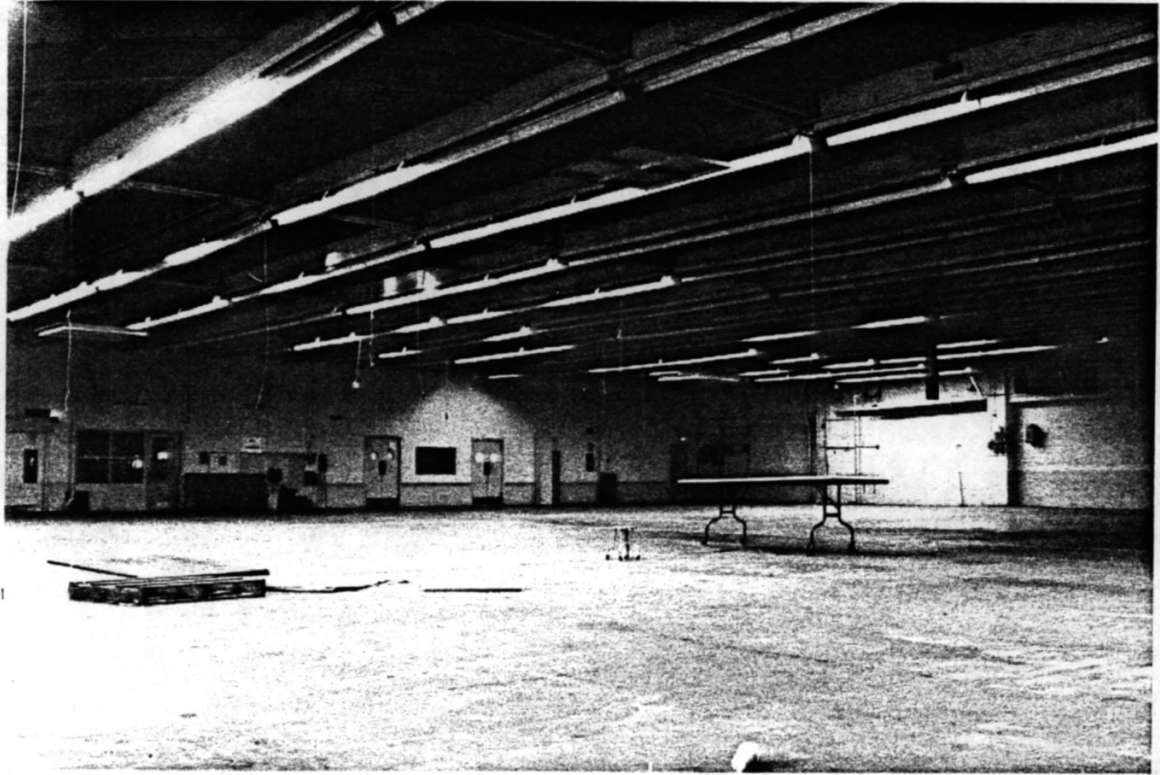
Jantzen Knitting Mill, Portland, Oregon
Ted R. Schneider Co., 1987
Negative held by photographer

Interior view of two story dyeing room in stage three
building of 1946, high natural light level from east
wall glass block windows between regularly spaced pilasters.
Photo #19



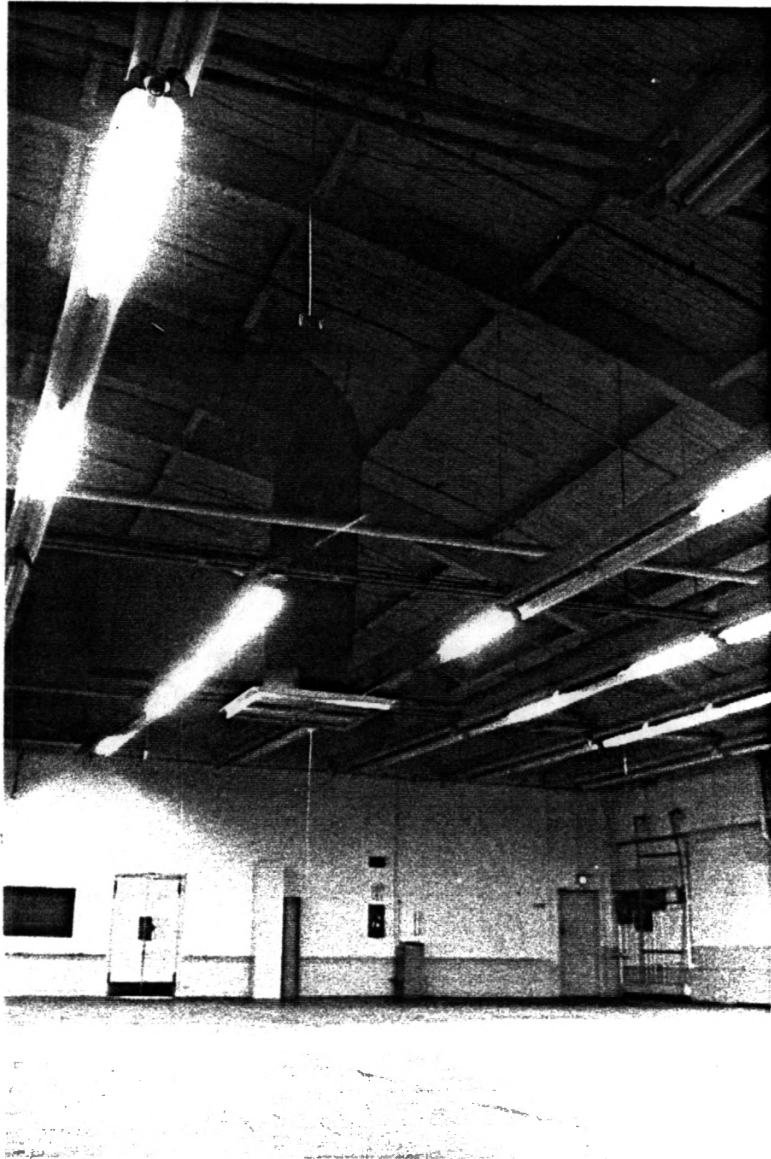
Jantzen Knitting Mill, Portland, Oregon
Ted R. Schneider Co., 1987
Negative held by photographer

Interior view of two story dyeing room in third stage building of 1946, showing long-span glue laminated beams, laminated wood ceiling/roof deck. Photo #20



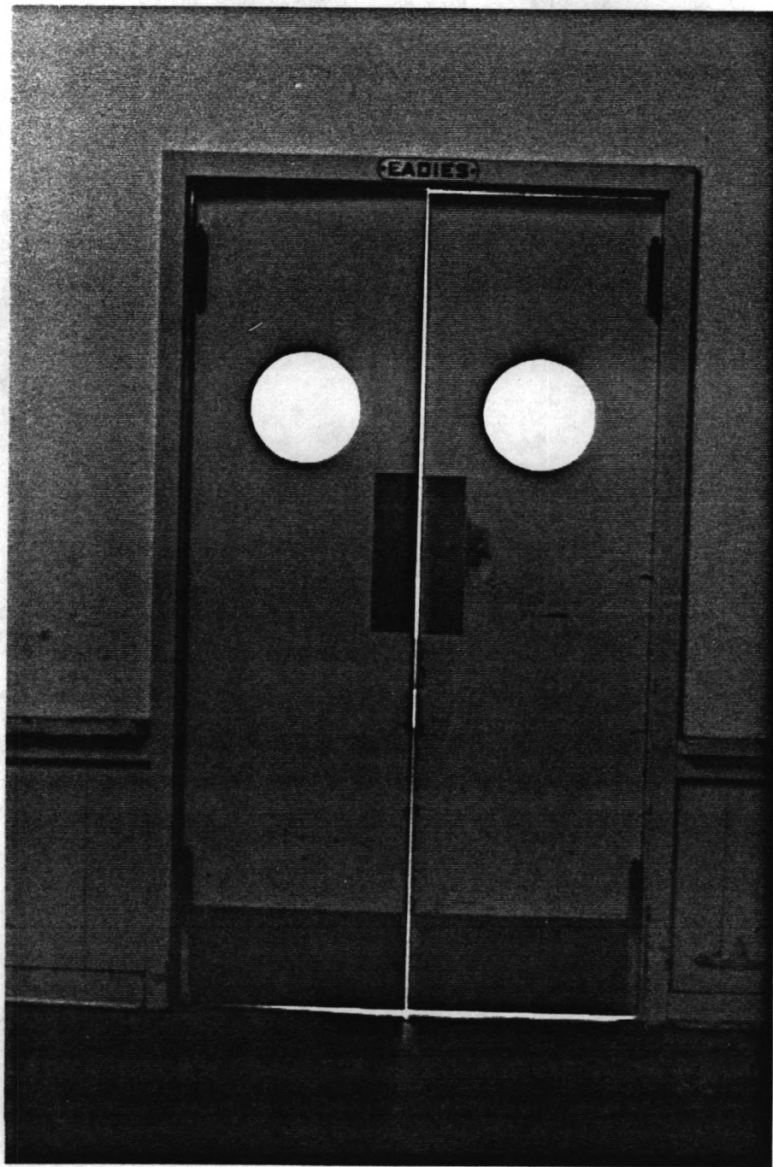
Jantzen Knitting Mill, Portland, Oregon
Ted R. Schneider Co., 1987
Negative held by photographer

Interior view on second floor of third stage 1946 building
showing clear span floor area for spinning machinery,
lighting, side offices. Photo #21



Jantzen Knitting Mill, Portland, Oregon
Ted R. Schneider Co., 1987
Negative held by photographer

Interior view on second floor of third stage building
of 1946 showing bow-string trusses, timber purlins, wood
plank roof deck. Photo #22



Jantzen Knitting Mill, Portland, Oregon
Ted R. Schneider Co., 1987
Negative held by photographer

Interior detail, second floor of third stage building
of 1946. Photo #23