



Escondida  
Paris vicinity  
Bourbon County  
Kentucky

Photographer unknown.  
Courtesy of Mrs. James Graves,  
Paris, KY

FEB 8 1978

Photo 1 <sup>35</sup><sub>3</sub> Front facade from  
south prior to restoration, 1970.

OCT 31 1977



Escondida  
Paris vicinity  
Bourbon County  
Kentucky

FEB 8 1978

Mary Cronan Oppel  
Kentucky Heritage Commission  
Frankfort, KY  
July 1977

Photo 20<sup>15</sup> Main facade viewed  
from southwest.

OCT 31 1977

PROPERTY OF THE NATIONAL REGISTER



Escondida  
Paris vicinity  
Bourbon County  
Kentucky

---

Mary Cronan Oppel  
Kentucky Heritage Commission  
Frankfort, KY  
July 1977

FEB 8 1978

Photo **32<sup>15</sup>** Detail of main  
facade showing tympanum  
fanlight, concave recess and  
main entrance.

---

Photographer facing north.

OCT 31 1977

---



Escondida  
Paris vicinity  
Bourbon County  
Kentucky

FEB 8 1978

---

Mary Cronan Opper  
Kentucky Heritage Commission  
Frankfort, KY  
July 1977

Photo 4.3<sup>15</sup> Exterior detail.  
Note splayed arch over window  
and molded cornice bricks.

OCT 31 1977

---

**PROPERTY OF THE NATIONAL REGISTER**





Escondida  
Paris vicinity  
Bourbon County  
Kentucky

---

FEB 8 1978

Mary Cronan Oppel  
Kentucky Heritage Commission  
Frankfort, KY  
July 1977

---

Photo ~~7.~~<sup>5. & 15</sup> Exterior view  
from northeast.

OCT 31 1977

---

**PROPERTY OF THE NATIONAL REGISTER**



Escondida  
Paris vicinity  
Bourbon County  
Kentucky

FEB 8 1978

---

Photographer Unknown  
1970

Courtesy of Mrs. James Graves,  
Paris, KY

Photo <sup>6215</sup>~~4a~~ Rear facade  
viewed from north. Prior to  
restoration.

OCT 31 1977

---

PROPERTY OF THE NATIONAL REGISTER



Escondida  
Paris vicinity  
Bourbon County  
Kentucky

FEB 8 1978

OCT 31 1977

---

Mary Cronan Oppel  
Kentucky Heritage Commission  
Frankfort, KY  
July 1977

---

Photo 30<sup>15</sup> Doorway leading from  
dining room to stairhall.  
Note decorative stringers and  
chair-railing.

---

PROPERTY OF THE NATIONAL REGISTER



Escondida  
Paris vicinity  
Bourbon County  
Kentucky

FEB 8 1978

Mary Cronan Oppel  
Kentucky Heritage Commission  
Frankfort, KY  
July 1977

8 8 15  
Photo 6. East parlor  
mantel.

OCT 31 1977

---





Escondida  
Paris vicinity  
Bourbon County  
Kentucky

FEB 8 1978

Mary Cronan Oppel  
Kentucky Heritage Commission  
Frankfort, KY  
July 1977

Photo 98<sup>15</sup> Dining room  
mantel.

OCT 31 1977

PROPERTY OF THE NATIONAL REGISTER



Escondida  
Paris vicinity  
Bourbon County  
Kentucky

OCT 31 1977

Mary Cronan Oppel  
Kentucky Heritage Commission  
Frankfort, KY  
July 1977

Photo <sup>10 of 15</sup> ~~8~~ Mantel in central  
sitting room. Built-in press  
to right.

FEB 8 1978



Escondida  
Paris vicinity  
Bourbon County  
Kentucky

FEB 8 1978

OCT 31 1977

Mary Cronan Oppel  
Kentucky Heritage Commission  
Frankfort, KY  
July 1977

Photo 197<sup>15</sup> Mantel in first  
floor bedroom.

---

PROPERTY OF THE NATIONAL REGISTER



Escondida  
Paris vicinity  
Bourbon County  
Kentucky

FEB 8 1978

OCT 31 1977

Mary Cronan Oppel  
Kentucky Heritage Commission  
Frankfort, KY  
July 1977

Photo 129<sup>15</sup> Mantel in first  
floor bedroom--east wing.  
Note low baseboard and  
chair-railing.





Escondida  
Paris vicinity  
Bourbon County  
Kentucky

FEB 8 1978

OCT 31 1977

---

Mary Cronan Oppel  
Kentucky Heritage Commission  
Frankfort, KY  
July 1977

---

Photo ~~B9~~<sup>B915</sup> Mantel in second  
floor bedroom at northeast  
corner.



Escondida  
Paris vicinity  
Bourbon County  
Kentucky

FEB 8 1978

OCT 31 1977

---

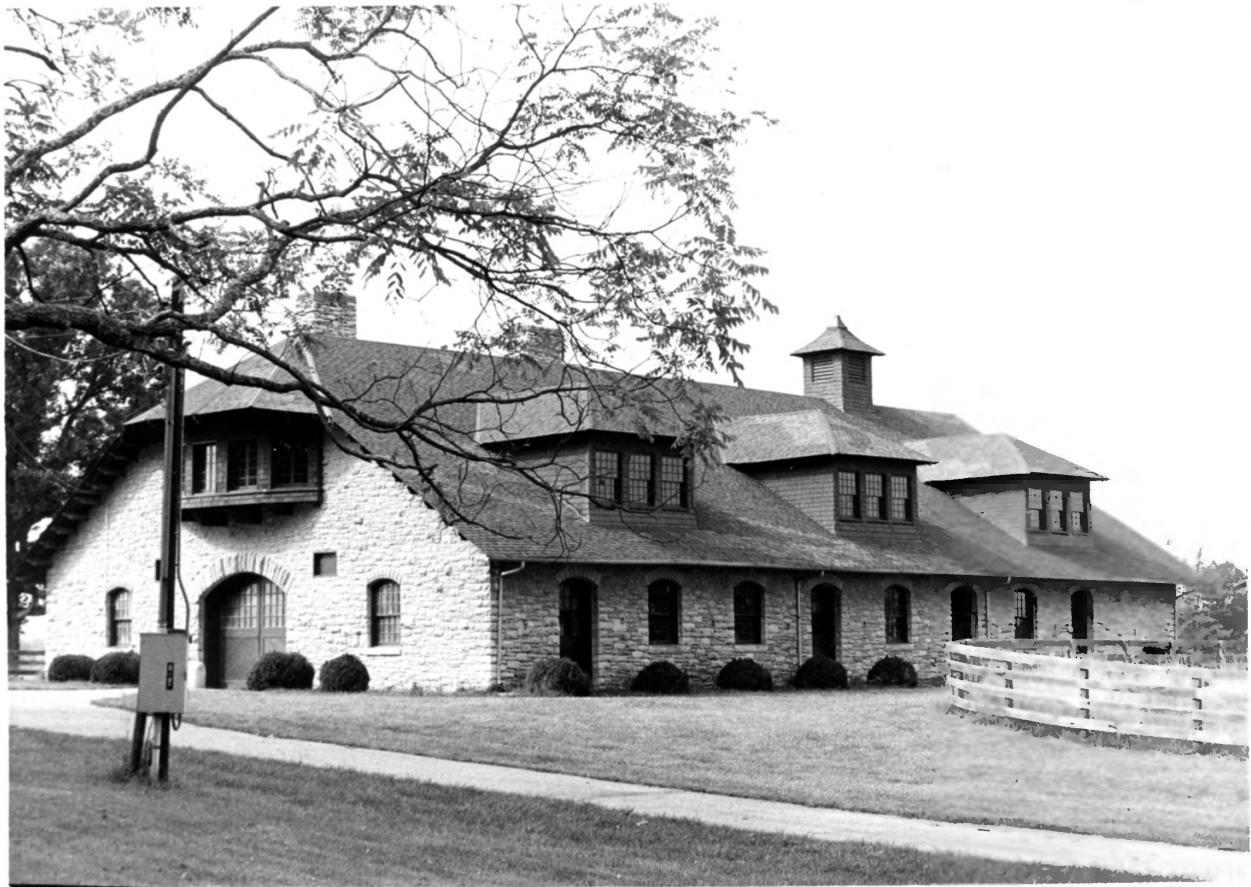
Mary Cronan Oppel  
Kentucky Heritage Commission  
Frankfort, KY  
July 1977

---

Photo 14g<sup>15</sup> Dining room press.  
Note gradation of sizes of  
panels.

---

PROPERTY OF THE NATIONAL REGISTER



Escondida

Paris vicinity

FEB 8 1978

Bourbon County

Kentucky

OCT 31 1977

---

Mary Cronan Oppel

Kentucky Heritage Commission

Frankfort, KY

July 1977

Photo 15g15Ca. 1900 stone  
barn 25 yards west of  
residence. View from  
northeast.

---