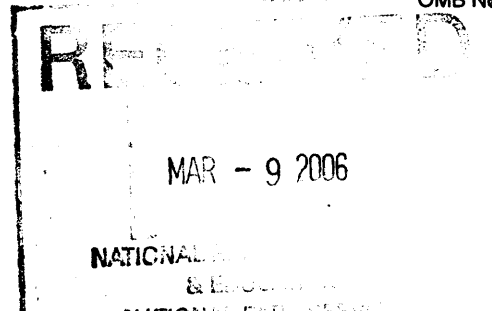


United States Department of the Interior
National Park Service

National Register of Historic Places
Registration Form



This form is for use in nominating or requesting determinations for individual properties and districts. See instructions in How to Complete the National Register of Historic Places Registration Form (National Register Bulletin 16A). Complete each item by marking "x" in the appropriate box or by entering the information requested. If an item does not apply to the property being documented, enter "N/A" for "not applicable." For functions, architectural classification, materials, and areas of significance, enter only categories and subcategories from the instructions. Place additional entries and narrative items on continuation sheets (NPS Form 10-900a). Use a typewriter, word processor, or computer, to complete all items.

1. Name of Property

historic name **Hazelett, Richard M., House**

other names/site number **Sunny Hill** **133-250-69002**

2. Location

street & number **911 East Washington Street** N/A not for publication
city or town **Greencastle** N/A vicinity
state **Indiana** code **IN** county **Putnam** code **133** zip code **46135**

3. State/Federal Agency Certification

As the designated authority under the National Historic Preservation Act, as amended, I hereby certify that this nomination request for determination of eligibility meets the documentation standards for registering properties in the National Register of Historic Places and meets the procedural and professional requirements set forth in 36CFR Part 60. In my opinion, the property meets does not meet the National Register criteria. I recommend that this property be considered significant nationally statewide locally. (See continuation sheet for additional comments.)

J.C.S.
Signature of certifying official/Title **Indiana Department of Natural Resources**
State or Federal agency and bureau

1-30-06
Date

In my opinion, the property meets does not meet the National Register criteria. (See continuation sheet for additional comments.)

Signature of certifying official/Title _____ Date _____
State or Federal agency and bureau _____

4. National Park Service Certification

- I hereby certify that the property is:
 entered in the National Register.
 See continuation sheet.
- determined eligible for the National Register
 See continuation sheet.
- determined not eligible for the National Register
- removed from the National Register
- other, (explain:)

Edson H. Beall
Signature of the Keeper **Edson H. Beall** Date of Action **4-19-06**

5. Classification

Ownership of Property
(Check as many boxes as apply)

Category of Property
(Check only one box)

Number of Resources within Property
(Do not include previously listed resources in the count)

- private
- public-local
- public-State
- public-Federal

- building
- district
- site
- structure
- object

Contributing	Noncontributing	
3	0	buildings
0	0	sites
1	0	structures
0	0	objects
4	0	Total

Name of related multiple property listing
(Enter "N/A" if property is not part of a multiple property listing.)
N/A

Number of contributing resources previously listed in the National Register
0

6. Function or Use

Historic Functions
(Enter categories from instructions)

Current Functions
(Enter categories from instructions)

DOMESTIC: Single Dwelling
DOMESTIC: Secondary Structure

DOMESTIC: Multiple Dwelling
DOMESTIC: Secondary Structure

7. Description

Architectural Classification
(Enter categories from instructions)

Materials
(Enter categories from instructions)

LATE VICTORIAN: Italianate

foundation STONE: Limestone

walls BRICK

roof STONE: Slate

other TERRA COTTA

Narrative Description

(Describe the historic and current condition of the property on one or more continuation sheets.)

8. Statement of Significance

Applicable National Register Criteria

(Mark "x" in one or more boxes for the criteria qualifying the property for National Register listing.)

- A Property is associated with events that have made a significant contribution to the broad patterns of our history.
- B Property is associated with the lives of persons significant in our past.
- C Property embodies the distinctive characteristics of a type, period, or method of construction or represents the work of a master, or possesses high artistic values, or represents a significant and distinguishable entity whose components lack individual distinction.
- D Property has yielded, or is likely to yield, information important in prehistory or history.

Criteria Considerations

(Mark "x" in all the boxes that apply.)

Property is:

- A owned by a religious institution or used for religious purposes.
- B removed from its original location.
- C a birthplace or grave.
- D a cemetery.
- E a reconstructed building, object, or structure.
- F a commemorative property.
- G less than 50 years of age or achieved significance within the past 50 years.

Narrative Statement of Significance

(Explain the significance of the property on one or more continuation sheets.)

Areas of Significance

(Enter categories from instructions)

ARCHITECTURE _____

Period of Significance

1868 _____

Significant Dates

1868 _____

Significant Person

(Complete if Criterion B is marked above)

N/A _____

Cultural Affiliation

N/A _____

Architect/Bullder

Braman, Elisha (architect) _____

9. Major Bibliographic References

Bibliography

(Cite the books, articles, and other sources used in preparing this form on one or more continuation sheets.)

Previous documentation on file (NPS):

- preliminary determination of individual listing (36 CFR 67) has been requested
- previously listed in the National Register
- previously determined eligible by the National Register
- designated a National Historic Landmark
- recorded by Historic American Buildings Survey # _____
- recorded by Historic American Engineering Record # _____

Primary location of additional data:

- State Historic Preservation Office
- Other State agency
- Federal agency
- Local government
- University
- Other

Name of repository:

Depauw University Archives; Indiana Historical Society

Hazelett, Richard M., House
Name of Property

Putnam IN
County and State

10. Geographical Data

Acreege of Property 1.4 acres

UTM References (Place additional UTM references on a continuation sheet.)

1	16	513400	4388070	3			
	Zone	Easting	Northing		Zone	Easting	Northing
2				4			

See continuation sheet

Verbal Boundary Description
(Describe the boundaries of the property on a continuation sheet.)

Boundary Justification
(Explain why the boundaries were selected on a continuation sheet.)

11. Form Prepared By

name/title Christopher Baas
organization _____ date 11-01-2005
street & number 21116 N. Banbury Rd telephone 317/ 877-7799
city or town Noblesville state IN zip code 46062

Additional Documentation

Submit the following items with the completed form:

Continuation Sheets

Maps

- A USGS map (7.5 or 15 minute series) indicating the property's location.
- A Sketch map for historic districts and properties having large acreage or numerous resources.

Photographs

Representative black and white photographs of the property.

Additional Items
(Check with the SHPO or FPO for any additional items)

Property Owner

(Complete this item at the request of SHPO or FPO.)

name Phillip J. & Georgenna Gick
street & number 183-N POW-MIA Drivw telephone 618/ 744-1019
city or town Scott AFB state IL zip code 62225

Paperwork Reduction Act Statement: This information is being collected for applications to the National Register of Historic Places to nominate properties for listing or determine eligibility for listing, to list properties and to amend existing listings. Response to this request is required to obtain a benefit in accordance with the National Historic Preservation Act, as amended (16 U.S.C. 470 et seq.).

Estimated Burden Statement: Public reporting burden for this form is estimated to average 18.1 hours per response including time for reviewing instructions, gathering and maintaining data, and completing and reviewing the form. Direct comments regarding this burden estimate or any aspect of this form to the Chief, Administrative Services Division, National Park Service, P.O. Box 37127, Washington, DC 20013-7127; and the Office of Management and Budget, Paperwork Reductions Projects (1024-0018), Washington, DC 20503.

United States Department of the Interior
National Park Service

NATIONAL REGISTER OF HISTORIC PLACES CONTINUATION SHEET

Section number 7 Page 1

Richard M. Hazelett House, Putnam County, Indiana

Architectural Description

The Richard M. Hazelett House, Sunny Hill, is a two-story brick building with a slate covered cross-hipped roof, and a raised stone foundation. The single-story wood verandahs that were once located on the house's north, west, and south facades have been removed, and the house was converted into four apartments about 1985. The house is located on a 1.4-acre plot that was historically part of a 33-acre parcel. The property contains three contributing buildings (the house, the combination privy and smokehouse outbuilding, and the barn), and a contributing structure (a wrought iron fence along Washington Street). The house sits on a small knoll that is covered in turf and has several mature trees. Residential properties surround the house, and a high school is located across Washington Street.

The house's roof has five brick chimneys that have been parged and painted white. The slate is laid in a floral pattern by using different colors of the material. The roof is supported by a large frieze and sets of double brackets equally spaced across each façade. Each bracket is comprised of two scrolls. The brick walls are laid in a Flemish bond. The raised foundation is constructed of coursed, square-cut ashlar. A row of brick headers separates the foundation from the brick wall in the areas where the verandahs were located. The areas not covered by a verandah have a thin, dressed limestone band in place of the row of headers.

The house has tall, arched, one-over-one and four-over-four wood double-hung windows, with terra-cotta caps and stone sills that are painted white (See Photo #5). The caps consist of foliated corbels with acorn finials that support an arch of foliated scallops. A palmette-like medallion is located at the arch's peak. Four of the house's windows were shortened when bathrooms were installed by removing the bottom sash, enclosing the void with brick, and raising the sill. Basement windows are located in the bay divisions of each façade, except where entry or cellar doors are located.

The south, or front, façade consists of the house's core block with a hipped roof wing on its east end (See Photo #1). The core block is divided into two bays. The westernmost bay has one-over-one windows on both stories. The eastern bay has an entry door and a one-over-one window on the second story. The entry is accessed by concrete steps and covered by a small, flat roof supported by a wood brace. Pilasters that have a tapered center and decorative circular carvings flank the entry door. The door is protected by a storm door that has six-lights over a small panel. The transom has a single light storm window. The entry door's single light is framed with decorative molding and bull's eye corner blocks, and is located over a rectangular panel with scalloped corners. The

United States Department of the Interior
National Park Service

NATIONAL REGISTER OF HISTORIC PLACES CONTINUATION SHEET

Section number 7 Page 2

Hazelett House, Putnam County, Indiana

transom's shape is identical to the door's panel and contains red glass.¹ The metal frame for an arched awning extends from the entry to cover the approaching walk. The wing has a one-over-one window on the first story, and a four-over-four window on the second. A wood verandah was located along the main block's lower story. Its outline is evident in the color variation of the brick.

The east façade is divided into four bays of different sizes (See Photo #2). The southernmost bay has a one-over-one window on the first story and a four-over-four window on the second. The adjacent bay to the north is a semi-hexagonal bay wall with first and second story one-over-one windows on its angled walls. The bay north of the bay wall has a basement entry, a one-over-one window on the first story, and a four-over-four window on the second. The northernmost bay has first and second story four-over-four windows. Its first story window has been shortened.

The north façade consists of the house's main block with a wing on its east end (See Photo #3). The wing is divided into two bays. The eastern bay has a first story door and a second story four-over-four window. The door is accessed by limestone steps, and has a surround comprised of wide, plain pilasters topped with a decorative molding and a plain frieze. The entry door has two vertical three-light windows over two vertical panels. The wing's west bay has a first story one-over-one window, and the second story has a four-over-four window, that have both been shortened. The façade's main block is also divided into two bays. The easternmost bay has a first story entry door and second story four-over-four window that have been shortened. The shortened door still retains its surround that matches the wing's kitchen entry. The westernmost bay has a one-over-one first story window and a four-over-four second story window. A wood verandah was located along the main block's lower story. Its outline is evident in the color variation of the brick.

The west façade is comprised of the house's main block, and a wing located on its north end (See Photo #4). The main block is divided into three bays. The two southernmost bays have first and second story one-over-one windows. The northernmost bay has a first story entry and a second story one-over-one window. The entry is accessed by limestone steps. The door surround matches the north façade, but includes a wood cornice with small brackets, a detail likely removed from the north's kitchen entry. The door and transom match the south façade, and are protected by a storm door and window. The wing has a single bay with a cellar entry, a one-over-one first story window, and a four-over-four

¹ Red glass is made adding gold and acid to molten glass (although copper can also be used). The red transom glass found over the south and west entry doors is thought to be a show of the owner's prominence and wealth.

second story window. A wood verandah was located along the main block's lower story. Its outline is evident in the color variation of the brick.

United States Department of the Interior
National Park Service

NATIONAL REGISTER OF HISTORIC PLACES CONTINUATION SHEET

Section number 7 Page 3

Hazelett House, Putnam County, Indiana

The contributing combination privy and smokehouse outbuilding is a single story, gable roof building measuring 12'x20' (See Photo #14). The privy is located on the east end and is accessed from the south façade. The smokehouse is located on the west end and is accessed on the west façade. The roof has asphalt shingles and a chimney on its east end. The gables have ornamental bargeboards that display alternating oval and floral details. The brick walls are laid in a common bond of seven rows of stretchers between single rows of headers. The lower section of the walls has been parged. The south façade has a door near its southeast corner and a single light window located near its center. The door has a single horizontal panel located over four vertical panels. The west façade has a door located near the building's southwest corner that has two, small square panels located over two, long rectilinear panels. The north façade has a wood opening, presumably to supply the building with firewood, located at ground level near the center of the building. The east façade does not have openings.

The contributing one and one-half story barn, that may have been a carriage house, has a mortise & tennon frame and board-and-batten siding (See Photo #16). Its gable roof had new metal installed in 2004. The barn has footings of large, rectangular limestone slabs turned vertical, with smaller limestone pieces stacked on top. The underside has small animal pens that likely housed hogs. Its south façade has two entry doors, and a flat-roofed wood canopy that is believed to have been added when the house was converted to apartments. The east façade has a single story shed addition that was constructed about 1905, likely to house a carriage. The north façade has a set of doors, and several smaller openings that were likely used for ventilation, but are now enclosed.

A contributing wrought iron fence runs along the south property line near Washington Street, with a gate on axis with the house's main entrance (See Photo #13). The fence sections are comprised of three horizontals, verticals the height of the fence that alternate with verticals half the height of the fence, and iron zigzag strips that tie together the top horizontal and the full-height verticals. The gateposts are comprised of four vertical strips topped by finials, and braced by angled strips of iron. The gate matches the typical fence section, but is topped with iron scrolls.

The house's interior displays plaster walls, ash and poplar flooring, and ash and walnut woodwork. The woodwork is noticeably more detailed in the first story public spaces than the second story domestic spaces. The first story baseboards consist of a wide plank

United States Department of the Interior
National Park Service

NATIONAL REGISTER OF HISTORIC PLACES CONTINUATION SHEET

Section number 7 Page 4

Hazelett House, Putnam County, Indiana

topped with a decorative beveled molding. The second story has a simpler plank with a decorative edge. The doors (See Photos #10) have two long panels over two small, and an "ash finish on white walnut."² Doors in the more formal rooms have panels framed with a decorative molding. The doors display wide, molded trim, and many have transoms.³ The tall, arched windows extend from near the floor to the ceiling (See Photo #8). The openings are flanked by broad planks, surrounded by a decorative molding, and are covered by four-fold inside window shutter blinds. The blind's outer folds have four vertical panels, and the inner folds have pivoting slats (See Photo #9).

The house retains eight of its ten fireplaces. Most have two-piece cast iron fronts with an arched firebox, decorative cover, curved marble mantel, and a decorative shield above the firebox that conceals the seam between the two iron pieces (See Photo #12). Several fireplaces display a wood, classically inspired mantelpiece that consists of pilasters supporting a wide frieze and mantel. They are constructed around square iron fronts that have an arched firebox and decorative screen (See Photo #11).

The house's historic plan is arranged around a central, north-to-south hall that runs the length of the house, and a perpendicular east-to-west hall that runs from about the middle of the west façade to the north-to-south hall. The halls open to the verandas and facilitate air circulation through the house.

There is a logical organization of spaces for a noted businessman and family that would have likely welcomed many visitors. The house's "public" spaces are immediately accessible to the front entry, and the family and domestic spaces are clustered in the rear. The central hall has the house's main entry at its south end, and a stairwell that extends to the attic. The open-string stairs has a round, stocky, turned newel post with a square base, and turned balusters that support a continuous handrail. Decorative carved scrolls are located on the stringer (See Photos #6 and #7).

The first room east of the hall is a reception room that has a fireplace and doors to the hall and main family room. The room to its north is the main family room that has a fireplace located on the bay wall, and doors to the hall, and reception and dining rooms. The next room north is the dining room that has a fireplace, and had a waiter's pantry on its north wall, a dumbwaiter on its west wall, and doors entering to the hall, family room, and kitchen. The dining room also has a stairway leading to the second story. The next room to the

² Specifications for Sunny Hill, Jane Farmer Hays papers, DePauw University Archives.

³ Restoration of the house may reveal that all the doors had transoms.

United States Department of the Interior
National Park Service

NATIONAL REGISTER OF HISTORIC PLACES CONTINUATION SHEET

Section number 7 Page 5

Hazelett House, Putnam County, Indiana

north is the kitchen that has an exterior door on its north wall, and a stairwell to the cellar. The room west of main entrance is a parlor that had a fireplace on its north wall, and has a door that leads to the hall. A bedroom is located in the house's northwest corner, north of the east-to-west hall. It had a fireplace on its east wall that was flanked by presses.

The second story was laid out similar to the first, except for minor changes. The space above the parlor was partitioned into two rooms with doors to the hall, and the space above the dining room was partitioned for a bathroom with a door to the hall, and a library with a door leading to the bedroom over the family room.

The present plan exhibits the alterations made when the house was divided into four apartments. The central hall and stairway became shared space that accessed two apartments on the first floor and two on the second. The ground story's east apartment is accessed north of the stairs, and consumes the eastern half of the house. The doors between the reception, family, and dining rooms were moved, the dining room partitioned for a bedroom, and the back stairs removed and a bathroom installed. The west apartment was assembled by installing a bathroom in the north half of the central hall, a kitchen in the east-to-west hall, moving a bedroom door, and adding a parlor door. The fireplace from the parlor was removed. The second story was altered in much the same way, with also a single fireplace removed.

United States Department of the Interior
National Park Service

NATIONAL REGISTER OF HISTORIC PLACES CONTINUATION SHEET

Section number 8 Page 6

Hazelett House, Putnam County, Indiana

Statement of Significance

The Richard M. Hazelett House, Sunny Hill, is eligible for the National Register under Criteria C as an excellent example of the Italianate architectural style. The house was constructed in 1868 by one of the county's civic leaders and successful entrepreneurs. Although it has been altered by its conversion into apartments, it maintains a high level of integrity and was rated Outstanding in the Putnam County Interim Report.⁴

Historical Context

The Greencastle area was first settled in the 1820's, with the county organized in 1822 in honor of General Israel Putnam. The town was laid out on land donated by the Dukes family, and incorporated in 1850 with a population of 2,500. Greencastle and its vicinity, like many Indiana towns and cities, owed its fortune and growth to the 1830's construction of the National Road eight miles south of the city, and the broader transportation connection brought by the construction of railroads in the 1850's. In Greencastle's case, railroads were the Terre Haute & Indianapolis in 1852, the Louisville, New Albany and Chicago in 1854, and the St. Louis and Indianapolis in 1870. Improved transportation and shipping facilities caused the town to transition from agricultural to production industries such as nail manufacturing, and mill and mining machinery. By 1876 it had ten stores, two flouring mills, four drug and three hardware stores, three shoe stores, a woolen factory, and eight churches to support a population of 6,000. In 1837 the Methodists chose the town for the location of a college, Indiana Asbury University, making the town a center for education.⁵

The growing town and county naturally afforded opportunities to enterprising individuals. Richard Mordecai Hazelett (1819-1897) was born in Monroe County, but moved with his family to Putnam County when his father Samuel (1790-1882) purchased land in the county to farm. As a young man he had his hand in numerous entrepreneurial ventures. The Weik's History of the county described him as "one of the most influential men of his day and generation, in this section of the state and probably did as much, if not more, to stimulate general progress in Putnam County than anyone else, being prominent in business, political, and social circles." By age twenty-one, while farming the family property, he purchased and operated a local sawmill. He later became secretary and treasurer for the company that built the county's first gravel road. He was a director of the local First National Bank, as well as the Greencastle Iron and Rolling Mills. Hazelett was

⁴ Historic Landmarks Foundation of Indiana, *Putnam County Interim Report: Indiana Historic Sites and Structures Inventory*, 78.

⁵Baskin, Forster, and Company, *Illustrated Historical Atlas of the State of Indiana*, 305. Asbury is now DePauw University.

United States Department of the Interior
National Park Service

NATIONAL REGISTER OF HISTORIC PLACES CONTINUATION SHEET

Section number 8 Page 7

Hazelett House, Putnam County, Indiana

also involved in public service. He was nominated for an unsuccessful run for Congress, and received a Home Guard Commission for "colonelcy" from Govern O. P. Morton. An organizer of the first local Grange, he was "widely known as an agriculturist but also an extensive stock breeder and feeder."⁶ His obituary described him as one of the county's original pioneers, and a man "always abreast of the times on all questions reading and thinking for himself, and firm in his convictions when they were formed. He was a leader amongst men [and] championed all reforms that he believed would benefit and uplift his fellow citizens." Hazelett "was honored by his fellow citizens, having long served as a justice of the peace, and he was also nominated by his political friends, without solicitation and against his personal wishes, but these duties thrust upon him always received his best attention, as he believed that the confidence reposed in him merited the best recognition he could give." He wedded Malvina Buntin (1824-1861) in 1843, a marriage that produced six children.⁷ About 1863 he married Mary B. Hume.⁸

Hazelett purchased the Sunny Hill property in 1860 for \$4,000.⁹ Its location, as illustrated in an 1879 atlas, shows the house sandwiched on about five acres between Franklin Street on the north and Washington Street on the south. It was approximately a half block from the town limits in an area the 1870 census taker called the "east suburbs of Greencastle," and about a half block west of the fairgrounds. Hazelett owned an additional 28 acres south of Washington Street.¹⁰

In 1868 the family began construction of the house planned by Elisha Braman, and completed the following year. Braman was born in Connecticut about 1815, and appears to be one of the town's carpenter-builders. He apparently had drafting skills, but it is unknown if he had formal architectural training (the 1870 census lists his occupation as "carpenter"). The two contracts to construct Sunny Hill, one for the foundation and one for the house, refer to "plans drawn by Elisha Brayman" and "plans as drawn on paper by E. Brayman."¹¹ He is believed to have designed The Edifice, DePauw's first monumental structure that was

⁶ Jesse W. Weik, Weik's History of Putnam County, 599-601. Indiana State Board of Agriculture, Thirteenth Annual Report, 332-336.

⁷ 1897 newspaper clipping located in Jane Farmer Hays Papers, Depauw University Archives.

⁸ Jesse W. Weik, Weik's History of Putnam County, 600. Jane Farmer Hays, Hazelett's granddaughter, is a descendant of his first marriage.

⁹ Abstract of Title, 18. Located beyond the town limits, the property was not included in the Sanborn insurance maps.

¹⁰ Beers, Atlas of Putnam County, 25.

¹¹ Jane Farmer Hays papers, DePauw University Archives. Braman's name is misspelled on these documents.

United States Department of the Interior
National Park Service

NATIONAL REGISTER OF HISTORIC PLACES CONTINUATION SHEET

Section number 8 Page 8

Hazelett House, Putnam County, Indiana

constructed in 1837 but no longer exists. He is known to have made the drawings for the county's third courthouse, a Greek Revival building constructed in 1846, but others constructed it. The interim report refers to him as an architect that designed several houses in Greencastle, although none were identified.¹² He was hired by Hazelett to complete the house's carpentry, from the roofing to the interior finishes.

The house was constructed in the Italianate style that Indiana architectural historian Wilbur Peat explained was based on "Italian medieval and early Renaissance architectural books," and was one of the most popular building styles of the nineteenth century for its "beauty and elegance and to its appropriateness and ready adaptation to every kind of building." The style is characterized by arched doors and windows, low-pitched roofs, and broad eaves supported by decorative brackets. While typical residential forms included basic rectangular and block shapes, a large percentage of houses were a "studied irregularity of masses" that, Peat explained, were intended to "achieve comfort and livability along with informality and a degree of picturesqueness."¹³ Multiple storied towers were often featured on the main façade.

The style in Putnam County and Greencastle, as it was in all of Indiana, is expressed in a variety of ways. It was often applied in the form of a broad frieze and brackets to vernacular house types, such as the I-house, in new construction or the remodeling of existing Federal or Greek Revival examples. Its long and arched windows made it ideal for use in churches such as the Fincastle Universalist Church (1871) in Franklin Township. The style also coincided with the post-Civil War economy boom that made urban Italianate storefronts a standard in most all communities, for example the Albin Block (c.1875) in Greencastle. These buildings typically displayed large windows to illuminate interior spaces, were topped with parapets comprised of an elaborate cornice with brackets, and were embellished with applied stone and metal architectural details.

The vernacular interpretation of the style was locally popular for both urban and rural residential use. The basic block form is evident in the houses located at 628 and 629 East Washington, and 712 East Seminary. While 629 maintains its integrity, the other two examples have been altered with building additions and vinyl siding. As seen in Sunny Hill, there are several examples that display Peat's "irregularity of masses" in the form of a central core structure with two-story wings, or what the house's specifications called

¹² Lewis Publishing Company, History of Putnam County, Indiana 1887, 312; Jesse W. Weik, Weik's History of Putnam County, 66; Historic Landmarks Foundation of Indiana, Putnam County Interim Report: Indiana Historic Sites and Structures Inventory, 59.

¹³ Wilbur D. Peat, Indiana Houses of the Nineteenth Century, 118.

United States Department of the Interior
National Park Service

NATIONAL REGISTER OF HISTORIC PLACES CONTINUATION SHEET

Section number 8 Page 9

Hazelett House, Putnam County, Indiana

projections, and single-story porches or verandahs tucked within the resulting L-shapes. The neighboring property to the east is a smaller, wood-frame example that has been altered by the addition of vinyl siding and a contemporary porch. What was historically a large example is located at 511 East Washington, but its upper stories were destroyed by fire and it was rebuilt as a single-story residence with a mansard roof. It still displays large segmental arch windows with limestone caps, and sections of the interior retain the original woodwork. The neighboring 503 West Washington, believed to be Otto Ward's house that was used as an example for Sunny Hill's verandah, is a vernacular gable ell form with brackets, segmental arch windows, and a bay window. Unfortunately the verandah has been replaced by an early twentieth century porch and the house has vinyl siding. The markedly similar Bridges Farm (1870) in Franklin Township is reported to have been constructed shortly after Sunny Hill. It is two stories in height, brick, and displays a similar building massing and terra cotta window caps. It exhibits a reconstructed porch representative of the style. Other Greencastle houses display a mix of a waning Italianate style with the Queen Anne style that was growing in popularity. The houses at 429 East Anderson and 203 South College are impressive irregular-massed brick structures constructed c.1880 that maintain their integrity.

Greencastle's best example of the Italianate style is the F. P. Nelson House that was built about 1871 by a prominent local citizen, and listed in the National Register in 1981. While an architect has not been identified, the building is more stylized than the surrounding vernacular examples. The two-story brick structure displays a projecting entry pavilion with an arched, pedimented entry. The house has tall, segmental arch windows with ornate limestone caps, and limestone quoins are located on the building's corners. Like Sunny Hill, the house has been altered through the removal of a tower that topped the entry pavilion, and its twentieth century transition to apartments.

A review of contracts, specifications, and receipts indicates that Sunny Hill is more representative of typical pattern book construction where floor plans and architectural details were garnered from books, catalogues, and local examples than from more formal plans executed by a trained architect. The results do, though, display to certain levels, an understanding of asymmetrical balance and architectural proportion.

United States Department of the Interior
National Park Service

NATIONAL REGISTER OF HISTORIC PLACES CONTINUATION SHEET

Section number 8 Page 10

Hazelett House, Putnam County, Indiana

Hazelett, as opposed to Braman, controlled most aspects of the house's construction. He hired the contractors, appears to have written the agreements, and selected and supplied the materials. The majority of the materials were manufactured and supplied locally, while more specialized items were supplied from outside the county. For example, the roof slate and door hardware were supplied from Indianapolis, and the Terra Cotta window caps, an early example of the material, from Chicago.¹⁴ The specifications also left certain decisions to him, like the brackets and certain entry door details. Local houses were used as architectural examples. The cornice was to be "similar to that of Andrew Lockridges" and the verandahs were to be "in every respect similar and equal to the verandah in front of Otto Wards new house."¹⁵ Unfortunately these two structures have been altered and no longer display the features Hazelett appreciated enough to add to his own residence. In addition to the house a combination privy and smokehouse outbuilding was constructed northeast of the house and the vault was connected to the house's downspouts.

The 1870 census shows that Richard and Mary shared their house with four children and a domestic servant.¹⁶ An illustration of the house was featured in an 1876 atlas, and although it is slightly embellished, provides a good nineteenth century representation of its architecture and setting. The graphic's view is of the north façade and shows a series of three tree-covered terraces stepping down to Franklin Road, with an entry drive on the second terrace. (This portion of property was subdivided from the original and is not included in this application). It shows the slate roof, window caps, verandah, and that the original windows were one-over-one. The artist added a fountain, gazebo, and the more than two hundred-foot walk from the house to the road.¹⁷

Upon Hazelett's passing in 1897 the property was partitioned to his children and grandchildren, the portion containing Sunny Hill going to his daughter Sarah Farmer.¹⁸ A 1903 newspaper society article described a reception given in their "suburban home." The "parlors, dining room, etc., were artistically garnished with cut flowers, potted plants, etc, chrysanthemums being used with beautiful effect."¹⁹ The house was then conveyed to her

¹⁴ Jane Farmer Hays papers, DePauw University Archives. In the *Introduction to Early American Masonry*, Harley McKee explained that architectural ornamentation first became popular in United States in the 1850's, 54-55.

¹⁵ Specifications for Sunny Hill, Jane Farmer Hays papers, DePauw University Archives. The Lockridge House is a c.1849 Greek Revival. The Ward House has not yet been located.

¹⁶ *Ninth Census of the United States*, 1870. Microfilm collection, Indiana State Library.

¹⁷ Baskin, Forster, and Company, *Illustrated Historical Atlas of the State of Indiana*, 169. The illustration has misled some to believe that the north façade was the front of the house, however the construction specifications clearly identify that the south façade was the main entry.

¹⁸ Abstract of Title, 22.

¹⁹ Greencastle Star-Press, 'A Brilliant Social Affair.' November 13, 1903.

United States Department of the Interior
National Park Service

NATIONAL REGISTER OF HISTORIC PLACES CONTINUATION SHEET

Section number 8 Page 11

Hazelett House, Putnam County, Indiana

three daughters in 1932. A 1936 reminiscing newspaper account noted that the property was "empty," but that the house was "located on a knoll, gently sloping from all sides, [and] is beautiful; the high windows are arched and ornamented with heavy cornices in the fashion of the sixties and seventies. Many of the trees are doubtless of the original planting [and] still remain. It is a house built for a large family and for company, and seeing it one could understand the many guests, day and night, whose presence is chronicled in [Hazelett's] diary." It was built of "brick, with big rooms, high ceilings, the most wonderful woodwork, inside shutters and massive doors."²⁰ The Longden family purchased the house in 1946, and the Arnold family in 1955. Photos show that the verandahs were removed by 1960. In 1981 it was sold to the Kersey's who operated a music store by using the various rooms to display pianos and other merchandise, and ultimately converted it to apartments about 1985.

The current owners purchased the property for their retirement home in 1994, and plan to restore the house as their residence and a bed-and-breakfast. The home has lost some of its integrity through the removal of the verandahs and its transition to apartments. However, there is ample written and photo documentation to accurately reconstruct the verandahs, and the apartment alterations are mostly reversible. The roof, walls, cornice and brackets, and window caps are intact. Although slightly altered, the majority of the interior spaces are intact, as are the windows and doors, interior blinds, stairs, plaster, woodwork, and flooring. The owners plan to reconstruct the verandahs, and restore the shortened windows. The interior flow and connection of spaces will be restored, including reconstructing the back stairs. The owners have also been steadily purchasing adjacent properties in an effort to restore the original five acres of the homestead north of Washington Street. They presently own an additional 1.3 acres located north of the house, but not included as part of this application.

²⁰ Kate Milner Rabb, c.1936 newspaper clipping located in Jane Farmer Hays Papers, Depauw University Archives.

United States Department of the Interior
National Park Service

NATIONAL REGISTER OF HISTORIC PLACES CONTINUATION SHEET

Section number 9 Page 12

Hazelett House, Putnam County, Indiana

Bibliography

- Abstract of Title. Putnam County Abstracts, April 15, 1981. In possession of the homeowners.
- Baskin, Forster, and Company. Illustrated Historical Atlas of the State of Indiana. Chicago: Baskin, Forster, and Company, 1876.
- Beers, J. H. Atlas of Putnam County. Chicago: J. H. Beers and Company, 1879.
- Greencastle Star-Press. 'A Brilliant Social Affair.' November 13, 1903.
- Hays, Jane Farmer. Grandpa's Footprints. Unpublished manuscript by the granddaughter of Richard and Malvina Hazlett, c.1975.
- Hays, Jane Farmer. Papers donated to the Depauw University Archives, Roy O. West Library, Greencastle, Indiana.
- Hays, Jane Farmer. Hazelett Family of Greencastle, Indiana, including Farmer, Coleman, and Deitrich families. Unpublished genealogy located in the Indiana State Library, c.1972.
- Hays, Jane Farmer. Little Black Book. Reminisces of Richard M. Hazelett as assembled by his granddaughter. Manuscript microfilm located at the Indiana Historical Society.
- Historic Landmarks Foundation of Indiana. Putnam County Interim Report: Indiana Historic Sites and Structures Inventory. Indianapolis, 1982.
- Indiana State Board of Agriculture. Thirteenth Annual Report. Indianapolis: R. J. Bright, State Printer, 1872.
- Lewis Publishing Company. History of Putnam County, Indiana 1887. 1975 reprint by The Bookmark, Knightstown, Indiana.
- McAlester, Virginia and Lee. A Field Guide to American Houses. New York: Alfred A. Knopf, 1988.

United States Department of the Interior
National Park Service

NATIONAL REGISTER OF HISTORIC PLACES CONTINUATION SHEET

Section number 9 Page 13

Hazelett House, Putnam County, Indiana

McKee, Harley. Introduction to Early American Masonry. NYC: Columbia University/
Preservation Press, 1973.

Peat, Wilbur D. Indiana Houses of the Nineteenth Century. Indianapolis: Indiana Historical
Society, 1962.

Weik, Jesse W. Weik's History of Putnam County. Indianapolis: B. F. Bowen and
Company, 1910.

Women's Club of Indianapolis. Preserving Our Heritage: Historic Homes of Greencastle
and Putnam County. Unpublished Community Improvement Program manuscript
sponsored by Sears-Roebuck Foundation, 1970.

United States Department of the Interior
National Park Service

NATIONAL REGISTER OF HISTORIC PLACES CONTINUATION SHEET

Section number 10&11 Page 14

Hazelett House, Putnam County, Indiana

– **Verbal Boundary Description**

Beginning at a point which is 12.70 chains south and 5.14-5/6 chains east of the northwest corner of the east half of the northwest quarter of Section 22 in Township 14 North of Range 4 west. Said point being the center of Washington Street; thence to a point 212.42 feet east, then 297 feet north, then south 84-1/4 degrees west 213.16 feet to the point of beginning (1.44 acres).

Boundary Justification

The boundary describes the current legal property lines, and includes the house, fence, and outbuilding.

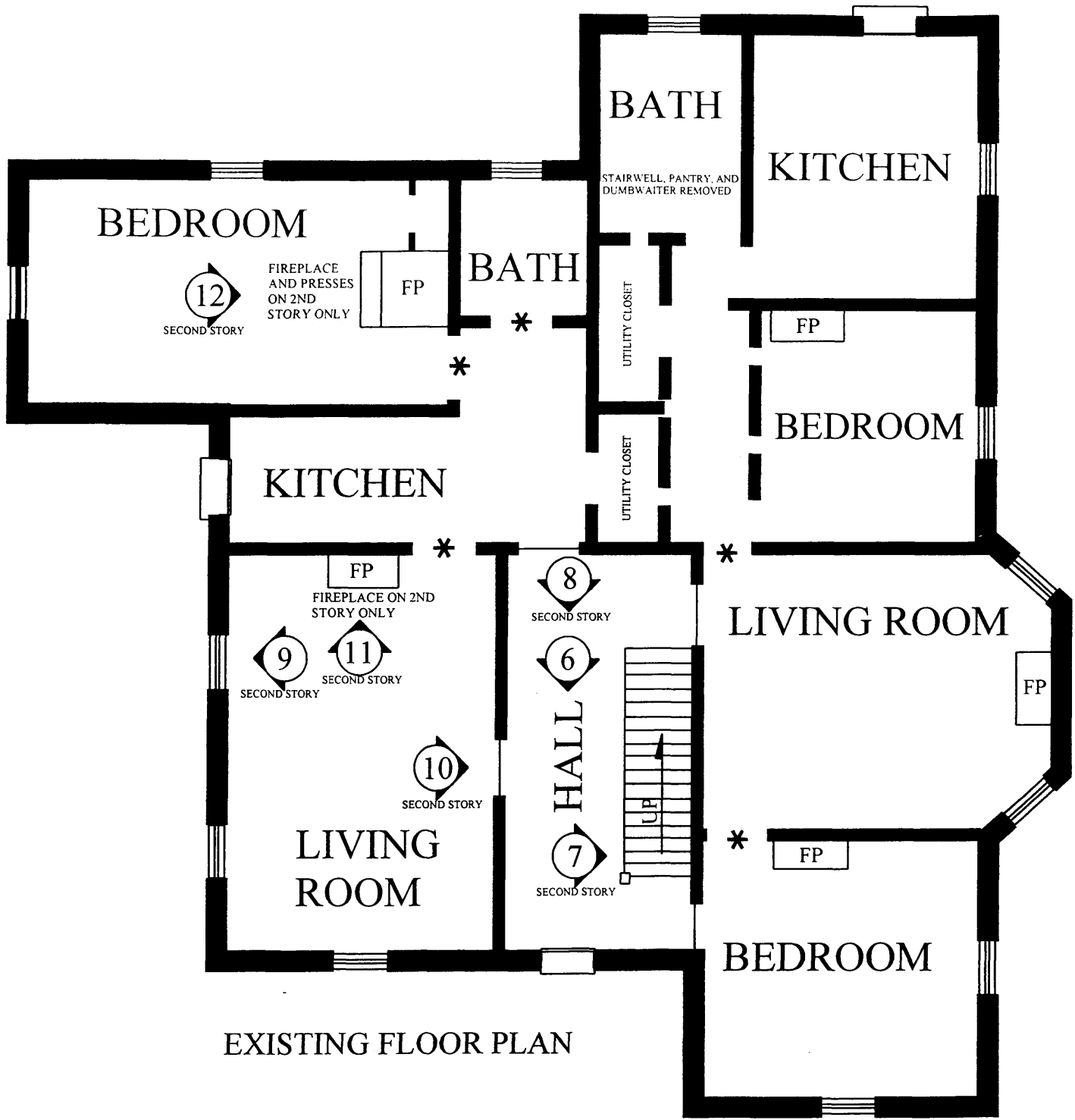
Photographs

Photos by Christopher Baas

August 1, 2005

Digital files with owner and the Indiana SHPO.

1. View of south façade looking north.
2. View of east façade looking west.
3. View of north façade looking southwest.
4. View of west façade looking northeast.
5. Detail of terra cotta window caps.
6. Interior view of entry door and newel post looking south.
7. Detail of stairs in the second story central hall looking south.
8. View of typical window (located in the second story central hall looking south).
9. View of typical window blind.
10. View of typical interior door.
11. View of reception room fireplace.
12. View of second story bedroom fireplace.
13. View of wrought iron fence looking north.
14. View of privy and smokehouse outbuilding looking northeast.
15. View of barn looking north.



EXISTING FLOOR PLAN

RICHARD M. HAZELETT HOUSE--SUNNY HILL PUTNAM COUNTY, INDIANA

PHOTO KEY AND LOCATION

ALTERED DOOR LOCATIONS

NON-HISTORIC INTERIOR PARTITIONS

SCALE: 1/8"=1'-0" (FOR ILLUSTRATION ONLY)

NOVEMBER 2005





"SUNNY HILL"

Pictures taken by Adda Farmer-Hutcheson around 1900 with a Kodak. She developed the glass plates, printed & mounted the pictures.



GEORGE F. BAKER, SWAN & HENCKS, JOHN CARROLL, UNITED STATES LIFE INS. CO.
 Clergyman & Composer, Prof. Real Estate Agent. Artistic Photographer, et aliorum. J. F. Talbot, Manager, in State Bank.

THE INDIANAPOLIS BUSINESS COLLEGE.
 Established 1858. The best and only actual Business College in the West. For drawings, Colored Papers, etc. Address
 FOERER & GOODIER, Post's, State Bank, Indianapolis, Ind.

RES. OF J. B. JULIAN IRVINGTON NEAR INDIANAPOLIS.



"SUNNY HILL" RES. OF R. M. HAZELETT GREENCASTLE PUTNAM CO. IND.



Parlor c.1900

Sunny Hill Reception Room



c.1900