



St. Peter's Church

QA-209

Queen Anne's County, Maryland

Pamela James 9/79

Maryland Historical Trust, Annapolis

view from south (U.S. Rte. 50 in foreground)

MAR 10 1980

JAN 4 1980





St. Peter's Church

QA-209

Queen Anne's County, Maryland

Pamela James 9/79

Maryland Historical Trust, Annapolis
view from south southwest.

MAR 10 1980

JAN 4 1980



St. Peter's Church

QA-209

Queen Anne's County, Maryland

Pamela James 9/79

Maryland Historical Trust, Annapolis

view from southwest

MAR 10 1980

JAN 4 1980



St. Peter's Church QA-209

Queen Anne's County, Maryland

Pamela James 9/79

Maryland Historical Trust, Annapolis
view from the north

MAR 10 1980

JAN 4 1980



QA-209

St. Peter's Church, Queen Anne's County

Pamela James 9/79

Maryland Historical Trust, Annapolis

rear of church (looking south)

Neg. at MHT

MAR 10 1980

JAN 4 1980



QA-209

St. Peter's Church, Queen Anne's County
Pamela James, 9/79
Maryland Historical Trust, Annapolis
close-up of altar

MAR 10 1980

JAN 4 1980



St. Peter's Church, Queen Anne's County
Pamela James, 9/79
Maryland Historical Trust, Annapolis
apse looking north
QA-209

MAR 10 1980

JAN 4 1980



St. Peter's Church

QA-209

Queen Anne's County, Maryland

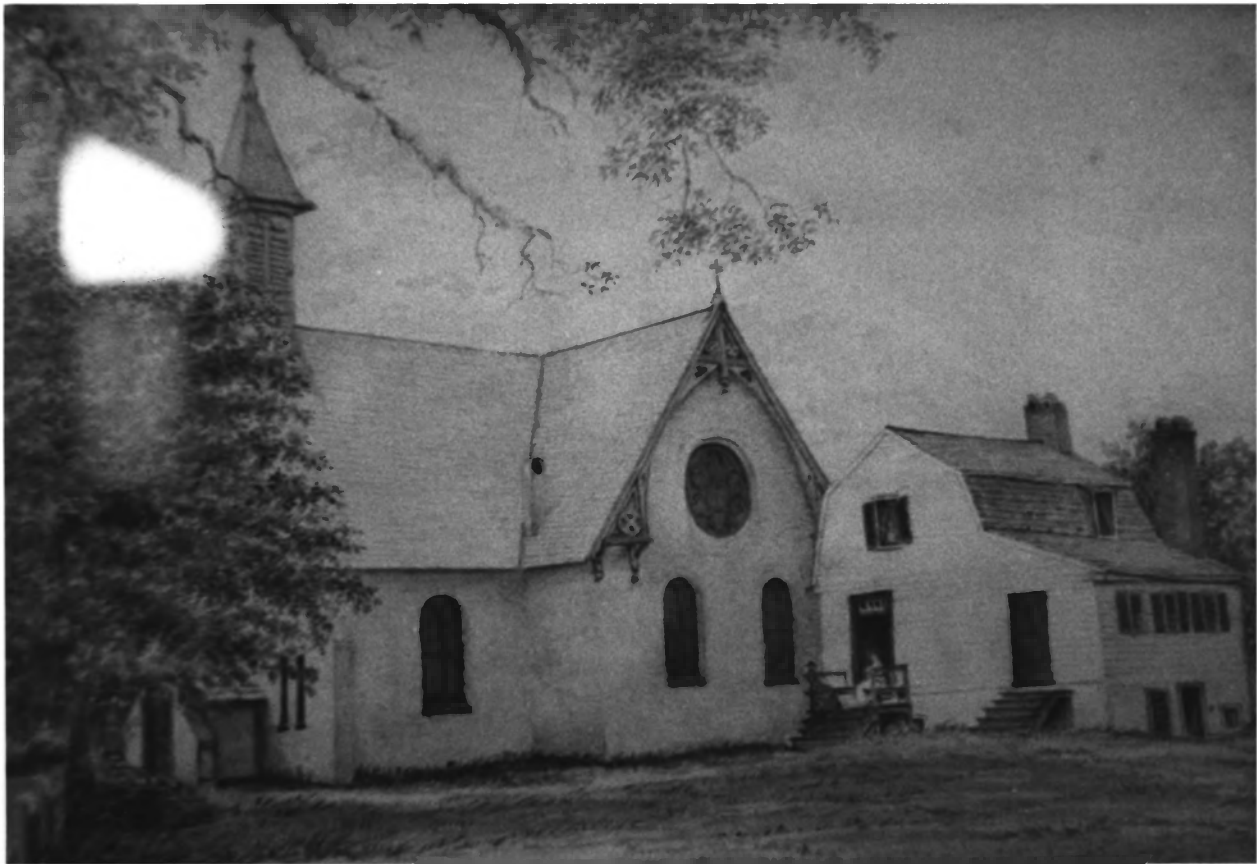
Pamela James 9/79

Maryland Historical Trust, Annapolis

painting of St. Peter's hanging there.

circa 1930s? | 0 1980

JAN 4 1980



MAD 10 1980

St. Peter's Church

QA-209

Queen Anne's County, Maryland

JAN 4 1980

Pamela James, 9/79

Maryland Historical Trust, Annapolis
drawing at the church (circa 1930s?)
showing pre-1784 chapel, later converted
to parsonage, demolished in 1960.



St. Peter's Church, Queen Anne's County
Pamela James 9/79
Maryland Historical Trust, Annapolis
early photograph of St. Peter's
showing what became U.S. Rte. 50 (hanging
in parish hall)

QA-209

MAR 10 1980

JAN 4 1980