



FIGURE 1: CARNEGIE INSTITUTION GEOPHYSICAL LABORATORY

2801 Upton Street, N.W.  
Washington, D.C.

Robinson & Associates

5/1989

Robinson & Associates

Facing North



FIGURE 2: CARNEGIE INSTITUTION GEOPHYSICAL LABORATORY  
2801 Upton Street, N.W.  
Washington, D.C.

Robinson & Associates  
5/1989

Robinson & Associates  
Facing North



FIGURE 3:  
CARNEGIE INSTITUTION GEOPHYSICAL LABORATORY

2801 Upton St. N.W.  
Washington, D.C.

Robinson  $\frac{1}{2}$  Associates

5/1989

Robinson  $\frac{1}{2}$  Associates

Facing North

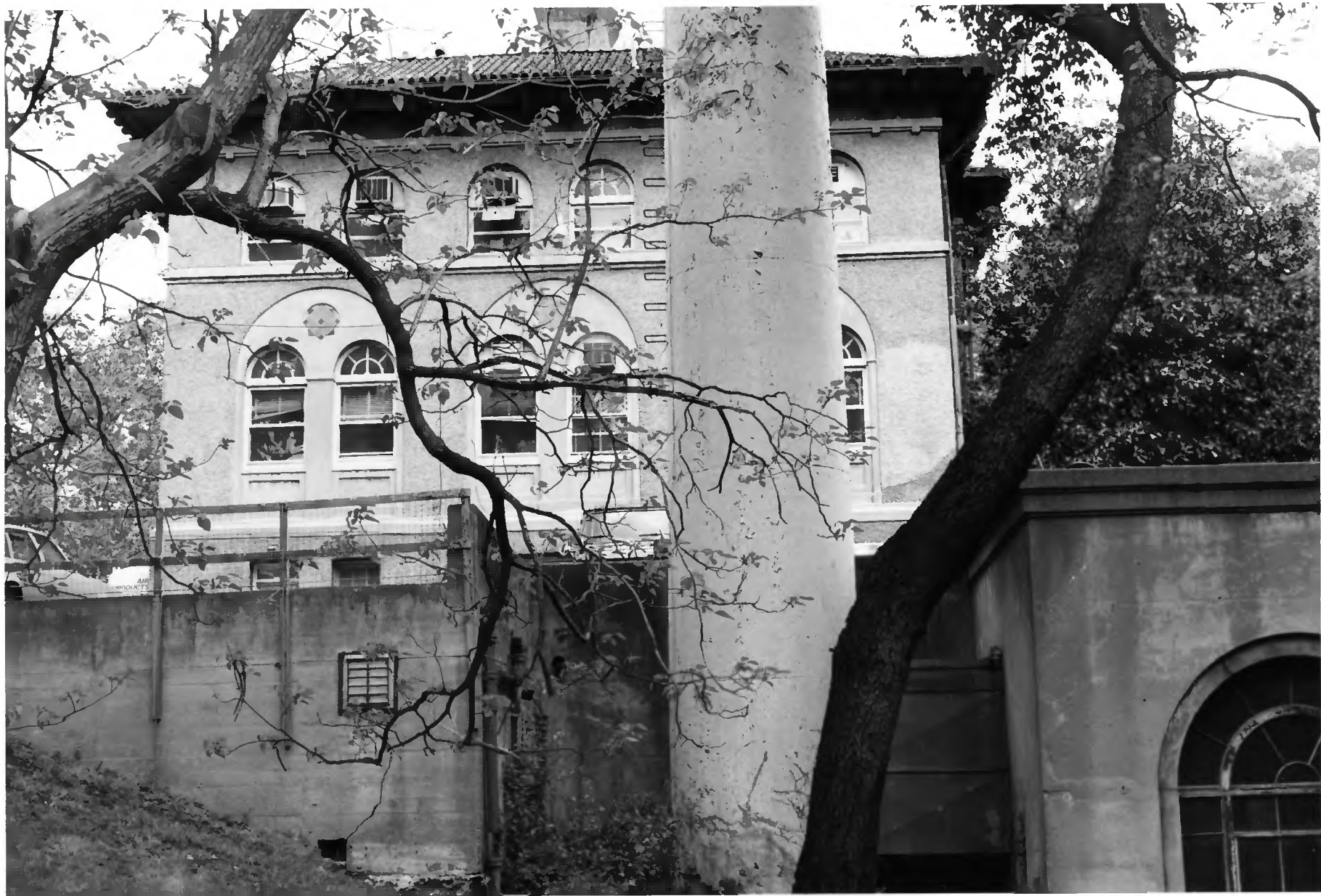


FIGURE 4 : WEST ELEVATION, CARNEGIE INSTITUTION GEOPHYSICAL LABORATORY  
2801 Upton Street, N.W.  
Washington, D.C.

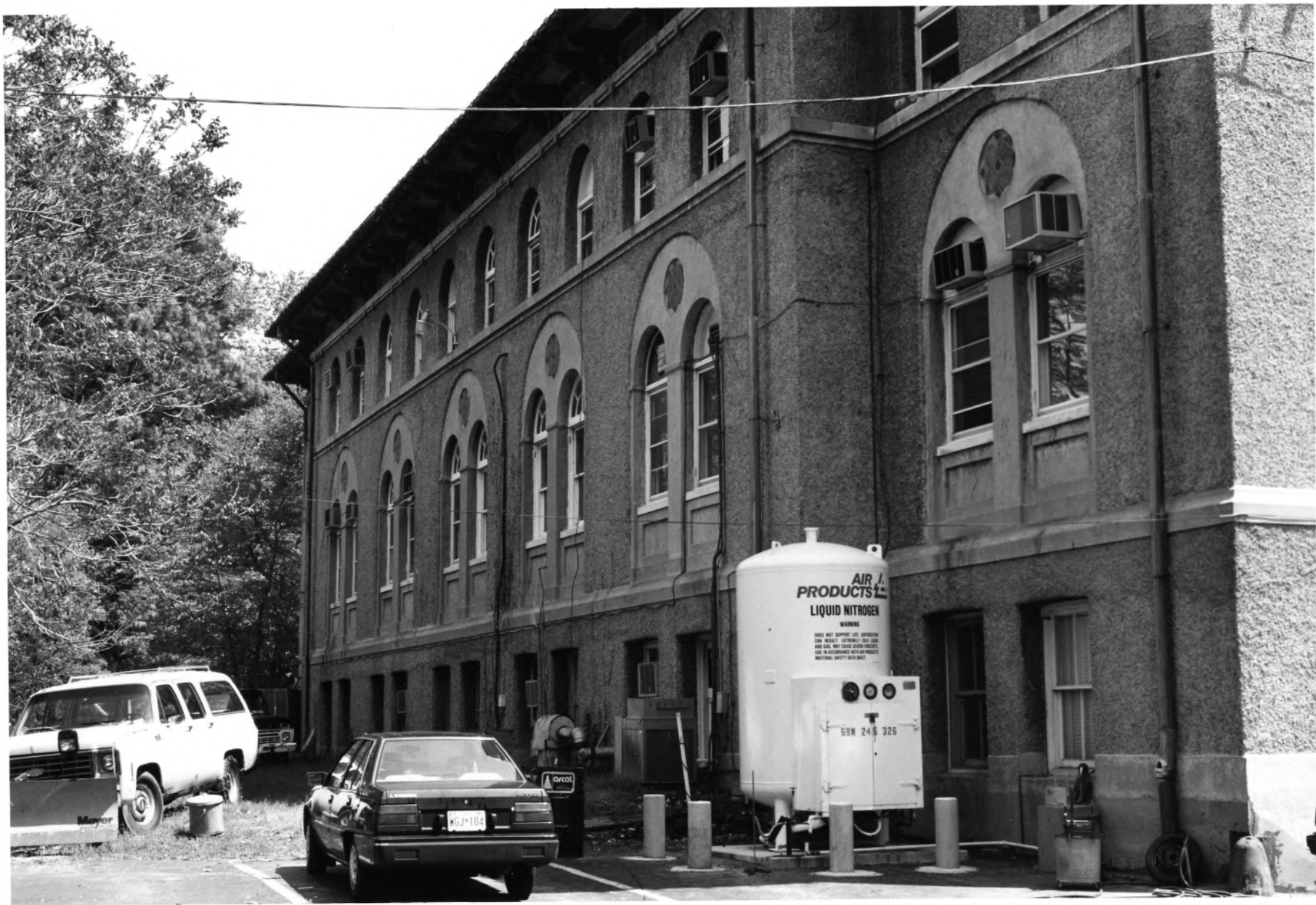
Robinson + Associates

1989

Negative: Robinson + Associates

Facing east





AIR PRODUCTS  
LIQUID NITROGEN

WARNING

DOES NOT SUPPORT LIFE. DANGEROUS  
FLAMMABLE. EXTREMELY COLD. USE  
AND CARE. MAY CAUSE SEVERE FROSTBITE.  
SEE INSTRUCTIONS ON SAFETY SHEET.  
MATERIAL SAFETY DATA SHEET.

65W 245 326

carcol

W6J-104

FIGURE 5: REAR, CARNEGIE INSTITUTION GEOPHYSICAL LABORATORY (North  
Elevation)

2801 Upton Street, N.W.  
Washington, D.C.

Robinson & Associates  
5/1989

Robinson & Associates  
Facing Southeast



FIGURE 6 : EAST ELEVATION, CARNEGIE INSTITUTION GEOPHYSICAL  
LABORATORY

2801 UPTON STREET, N.W.

WASHINGTON, D.C.

ROBINSON & ASSOCs.

5/1989

ROBINSON & ASSOCs.

FACING WEST



FIGURE 7: 1931 Power Plant Addition, CARNEGIE INSTITUTION

GEOPHYSICAL LABORATORY

2801 UPTON STREET, N.W.

Washington, D.C.

Robinson & Associates

5/1989

Robinson & Associates

Facing north



FIGURE 8 : OUTBUILDINGS, WESTERN PORTION OF SITE, CARNEGIE  
INSTITUTION GEOPHYSICAL LABORATORY  
2801 Upton STREET, N.W.  
Washington, D.C.

Robinson + Associates

1989

Negative: Robinson + Associates, Washington DC

Looking Northeast