



The Kentucky Heritage Commission

Name WOOLDRIDGE MONUMENTS

Location MAYFIELD, KENTUCKY James CO

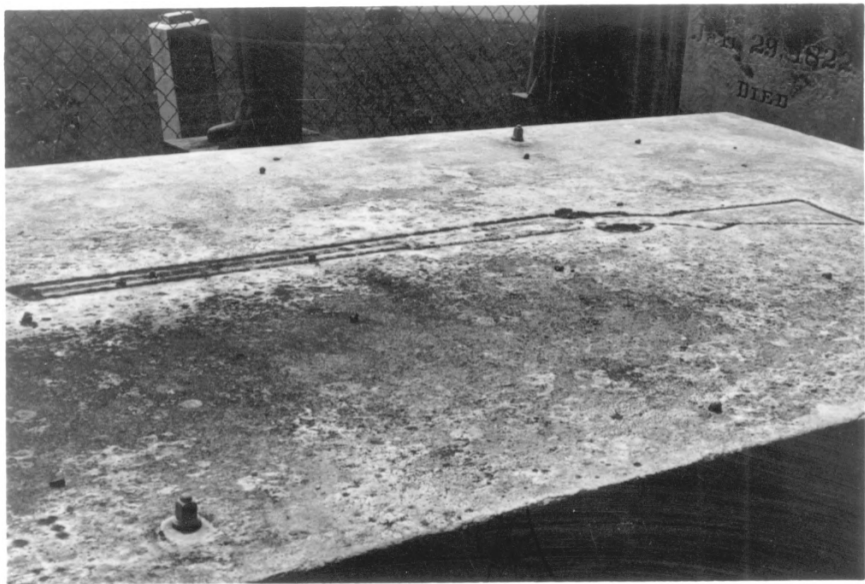
Photographer W. L. BEASLEY

Date Taken CIRCA 1935 JUN 25 1980

Negative Location BEASLEY MONUMENT COMPANY
PAOUCAN, KENTUCKY

View FIGURE 1. MONUMENTS FROM THE EAST

SHOWING ORIGINAL FENCE. AUG 11 1980



The Kentucky Heritage Commission

Name WOOLDRIDGE MONUMENTS

Location MAYFIELD, KENTUCKY Blaine Co.

Photographer CAMILLE WELLS

Date Taken AUGUST 23, 1979 JUN 25 1980

Negative Location KENTUCKY HERITAGE COMMISSION

View FIGURE 3. DETAIL OF RIFLE ON

WOOLDRIDGE TOMB. 3/13

AUG 11 1980



The Kentucky Heritage Commission

Name WOOLDRIDGE MONUMENTS

Location MAYFIELD, KENTUCKY Rowles Co.

Photographer CAMILLE WELLS

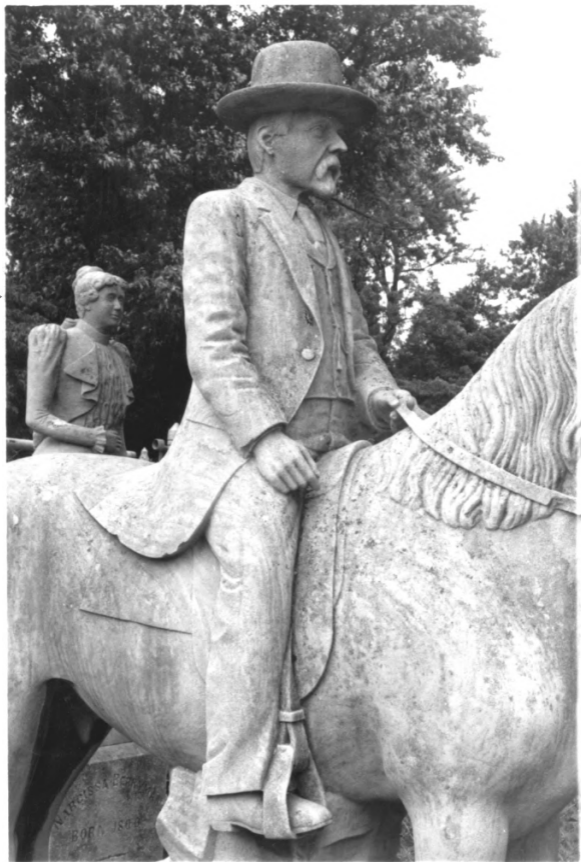
JUN 25 1980

Date Taken AUGUST 23, 1979

Negative Location KENTUCKY HERITAGE COMMISSION

View FIGURE 4. MARBLE STATUE OF 7/13

HENRY G. WOOLDRIDGE. AUG 11 1980



The Kentucky Heritage Commission

Name WOOLDRIDGE MONUMENTS

Location MAYFIELD, KENTUCKY Graves Co.

Photographer CAMILLE WELLS

Date Taken AUGUST 23, 1979 AUG 25 1980

Negative Location KENTUCKY HERITAGE COMMISSION

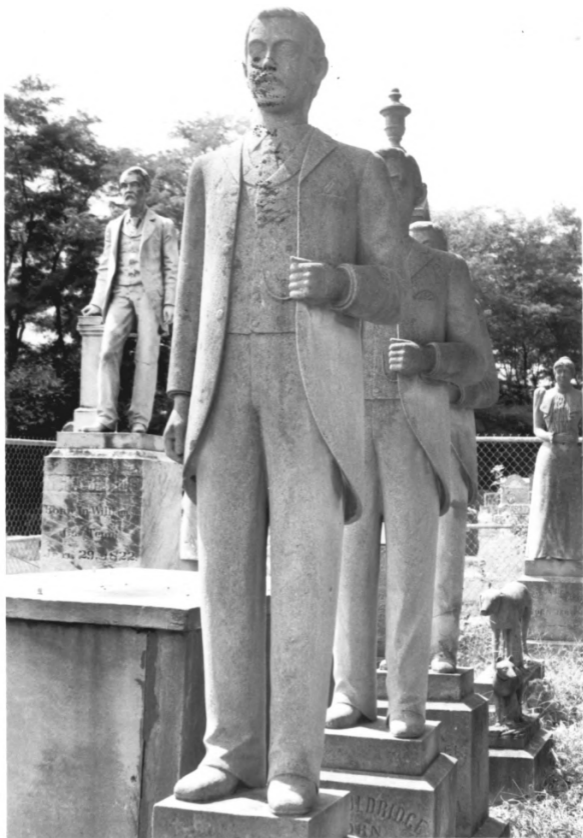
View FIGURE 5. STATUE OF HENRY G.

WOOLDRIDGE MOUNTED ON FOP.

5/13

AUG 11 1980

Heritage Commission, Cambridge, Kentucky



The Kentucky Heritage Commission

Name WOOLDRIDGE MONUMENTS

Location MAYFIELD, KENTUCKY Truman Co.

Photographer CAMILLE WELLS

Date Taken AUGUST 23, 1979 ~~JUN. 25 1980~~

Negative Location KENTUCKY HERITAGE COMMISSION

View FIGURE 6. MONUMENTS OF THREE

WOOLDRIDGE BROTHERS.

6/13

AUG 11 1980



The Kentucky Heritage Commission

Name WOOLDRIDGE MONUMENTS

Location MAYFIELD, KENTUCKY *Franklin Co.*

Photographer CAMILLE WELLS

Date Taken AUGUST 23, 1979 JUN 25 1980

Negative Location KENTUCKY HERITAGE COMMISSION

View FIGURE 7. STATUE OF THE FOX.

AUG 11 1980

7/13



The Kentucky Heritage Commission

Name WOOLDRIDGE MONUMENT

Location MAYFIELD, KENTUCKY Graves Co.

Photographer CAMILLE WALKER

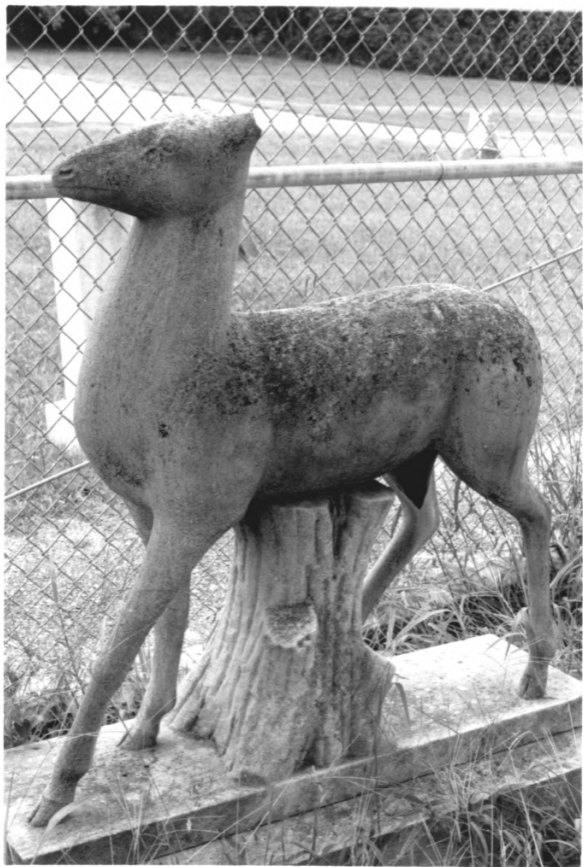
Date Taken AUGUST 23, 1979 JUN 25 1980

Negative Location KENTUCKY HERITAGE COMMISSION

View FIGURE 8. STATUE OF THE NORTH HOUND.

8/13

AUG 11 1980



The Kentucky Heritage Commission

Name WOODBRIDGE MONUMENTS

Location MAYFIELD, KENTUCKY Greene Co.

Photographer CAMILLE WELLS

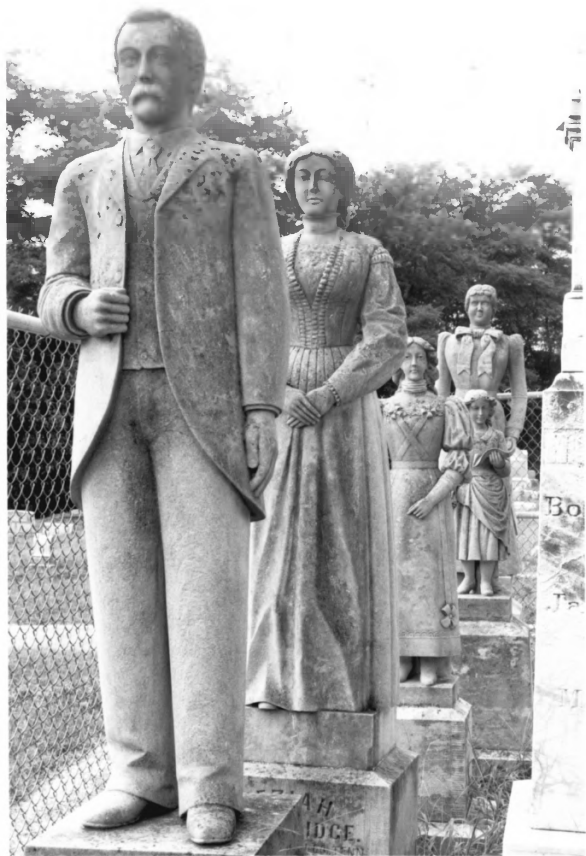
Date Taken AUGUST 23, 1979 JUN 25 1980

Negative Location KENTUCKY HERITAGE COMMISSION

View FIGURE 9. STATUE OF THE DEER.

AUG 11 1980

9/13



11

Bo

Ja

A.H.
IDGE

The Kentucky Heritage Commission

Name WOOLDRIDGE MONUMENTS

Location MAYFIELD, KENTUCKY Graves Co.

Photographer CAMILLE WELLS

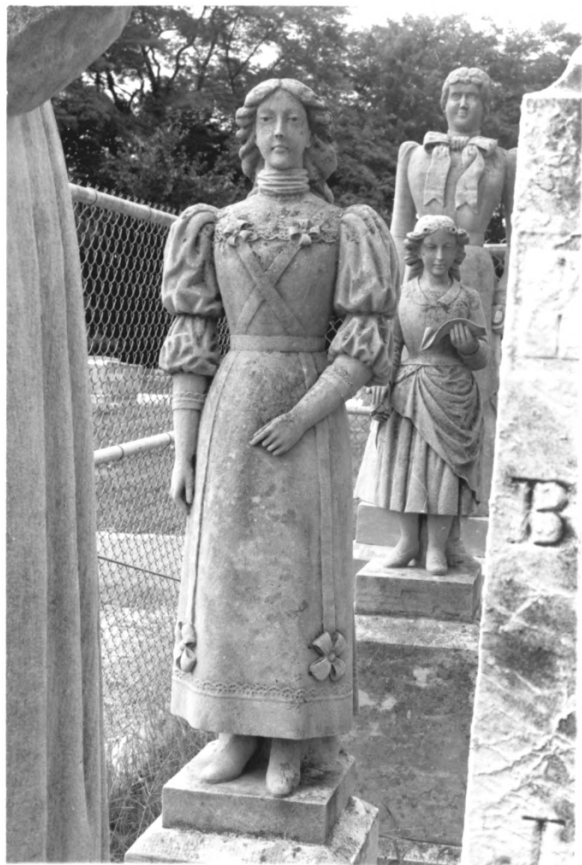
Date Taken AUGUST 23, 1979 JUN 25 1980

Negative Location KENTUCKY HERITAGE COMMISSION

View FIGURE 10. MONUMENT TO JOSIAH WOOLDRIDGE
AND (BEHIND, RIGHT) REZIAH WOOLDRIDGE.

AUG 11 1980

10
113



The Kentucky Heritage Commission

Name WOOLDRIDGE MONUMENT

Location MAYFIELD, KENTUCKY Homes Co.

Photographer CAMILLE WELLS

Date Taken AUGUST 23, 1979 JUN 25 1980

Negative Location KENTUCKY HERITAGE COMMISSION

View FIGURE 11. STATUES OF GREAT-NIECES

MINNIE AND (BEHIND) MAUD.

11/13

AUG 11 1980



The Kentucky Heritage Commission

Name WOOLDRIDGE MONUMENTS

Location MAYFIELD, KENTUCKY Grant Co.

Photographer W.L. BEASLEY

Date Taken CIRCA 1935 JUN 25 1980

Negative Location PRODUTH, KENTUCKY
BEASLEY MONUMENT COMPANY

View FIGURE 12. WOOLDRIDGE MONUMENTS

SHOWING THE THREE SISTERS (LEFT).

AUG 11 1980

12/13



NARCISSE BERRYMAN
BORN 1808

The Kentucky Heritage Commission

Name WOOLDRIDGE MONUMENTS

Location MAYFIELD, KENTUCKY

JUN 25 1980

Photographer CAMILLE WELLS

Graham Co.

Date Taken AUGUST 23, 1979

Negative Location KENTUCKY HERITAGE COMMISSIONS

View FIGURE 13. MONUMENT TO NARCISSA

BERRYMAN

13/13

AUG 11 1980