



Helena Historic District  
Helena, Trinity County, California  
H. L. Darville  
Trinity County Historical Society  
PO Box 333 Weaverville CA.  
June 1982  
Currie Cottage (Map #4)  
# 1 of 16



Helena Historic District  
Helena, Trinity County, California  
H. L. Darville  
Trinity County Historical Society  
PO Box 333 Weaverville CA.

June, 1982

Curria House (Map #4)

# 2 of 16



Helena Historic District  
Helena, Trinity County, California  
H. L. Darville  
Trinity County Historical Society  
PO Box 333 Weaverville CA.

June 1982

Small outbuildings (Map # 3) NW  
of Meckel Barn (Map # 6)  
# 3 of 16



JUN. 1982

Bldg #12

Rental House across from

Post Office. Helena

Photo - JUN. 1982  
by H. L. Darville

Helena Historic District  
Helena, Trinity County, California  
H. L. Darville  
Trinity County Historical Society  
PO Box 333 Weaverville

June 1982

North side of house (Map #12)  
across the street from Post Office

# 4 of 16





Helena Historic District  
Helena, Trinity County, California

H. L. Darville

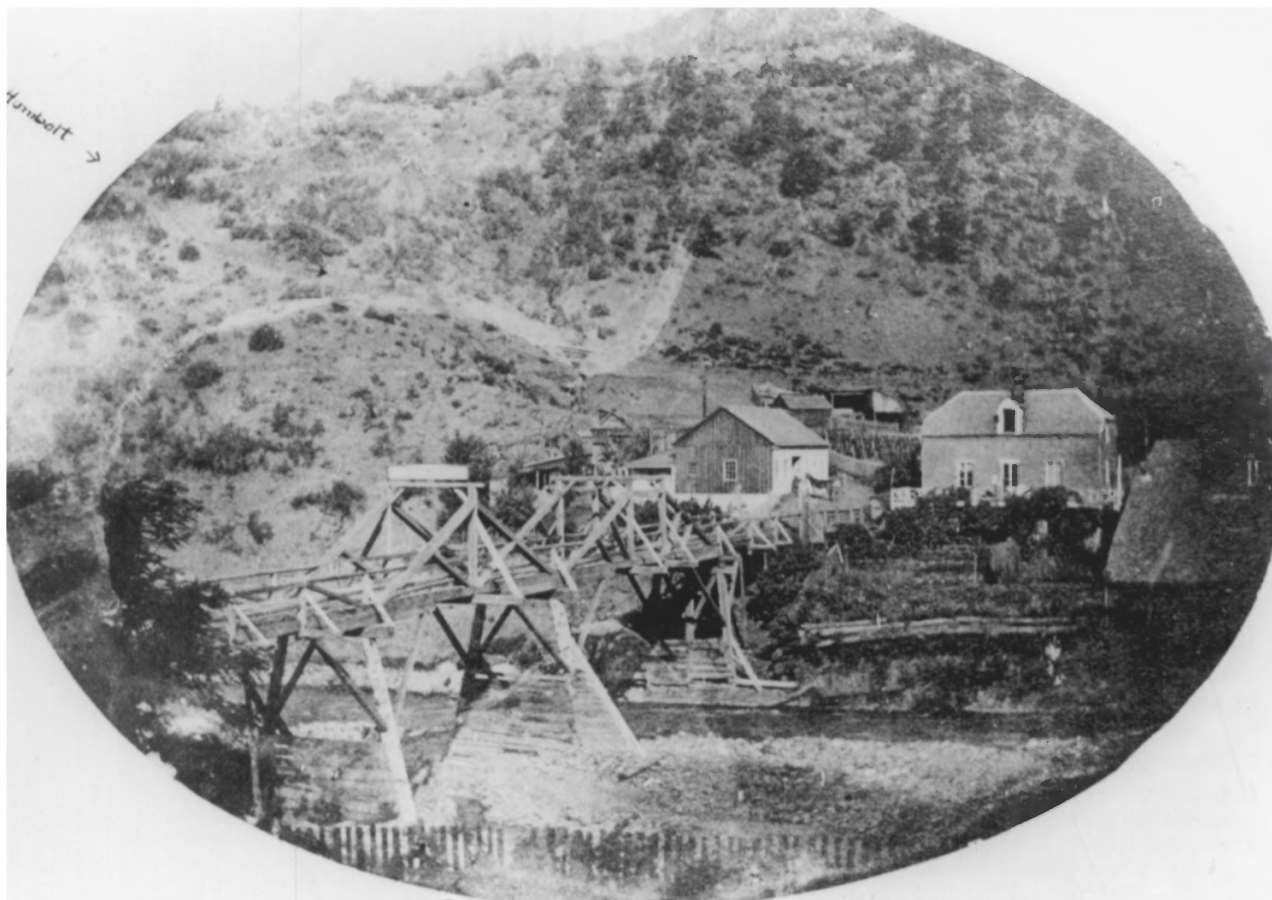
Trinity County Historical Society  
P.O. Box 333 Weaverville CA

June 1982

South side of house (Map # 12).  
across the street from Post Office

# 5 of 16

Humboldt →



Helena Historic District  
Helena, Trinity County, California

Photographer Unknown

Trinity County Historical Society  
PO Box 933 Weaverville CA

1860 or 1861

Looking West (Schlomer toll bridge,  
Schlomer's brick building, Schlomer's  
first blacksmith shop - left of toll bridge)

# 6 of 16



Helena Historic District  
Helena, Trinity County, California  
Eric Woods  
Trinity County Historical Society  
PO Box 333 Weaverville CA.

1974

Entrance to Helena (looking north)  
showing Schlomer's brick building #14  
and rental building (Map #12)  
# 7 of 16



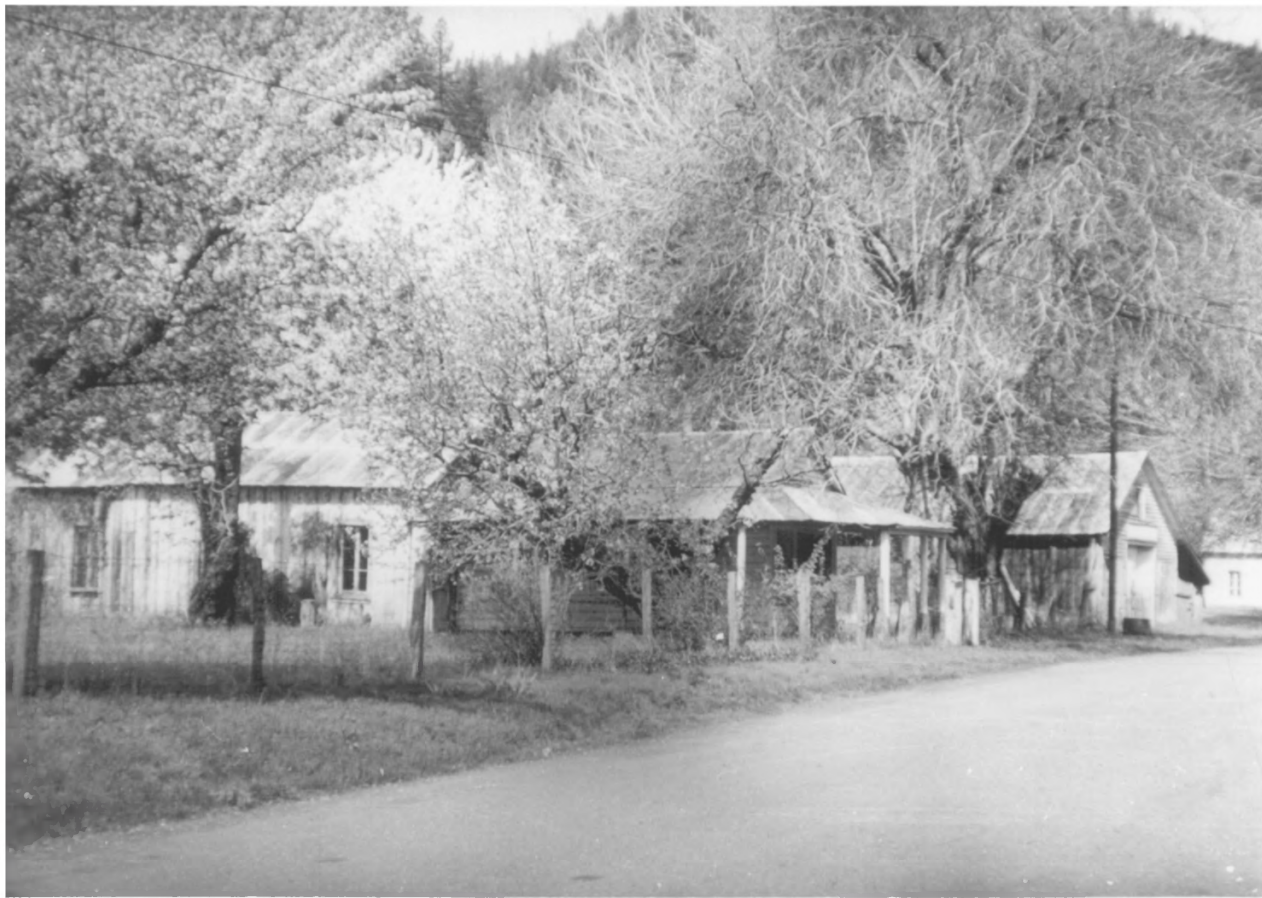
Helena Historic District  
Helena, Trinity County, California  
Alice Jones  
Trinity County Historical Society ~~Building~~ #4  
PO Box 333 Weaverville CA.

June 14, 1981

Currie Cottage (Map #4)

# 8 of 16





Helena Historic District  
Helena, Trinity County, California

Alice Jones  
Trinity County Historical Society  
PO Box 333 Weaverville CA.

April 1973

Main Street (looking NW) showing old  
Schlomer Home (now destroyed), Road &  
Livery Stable, Currier Cottage  
# 9 of 16 (Map # 5 and # 4)



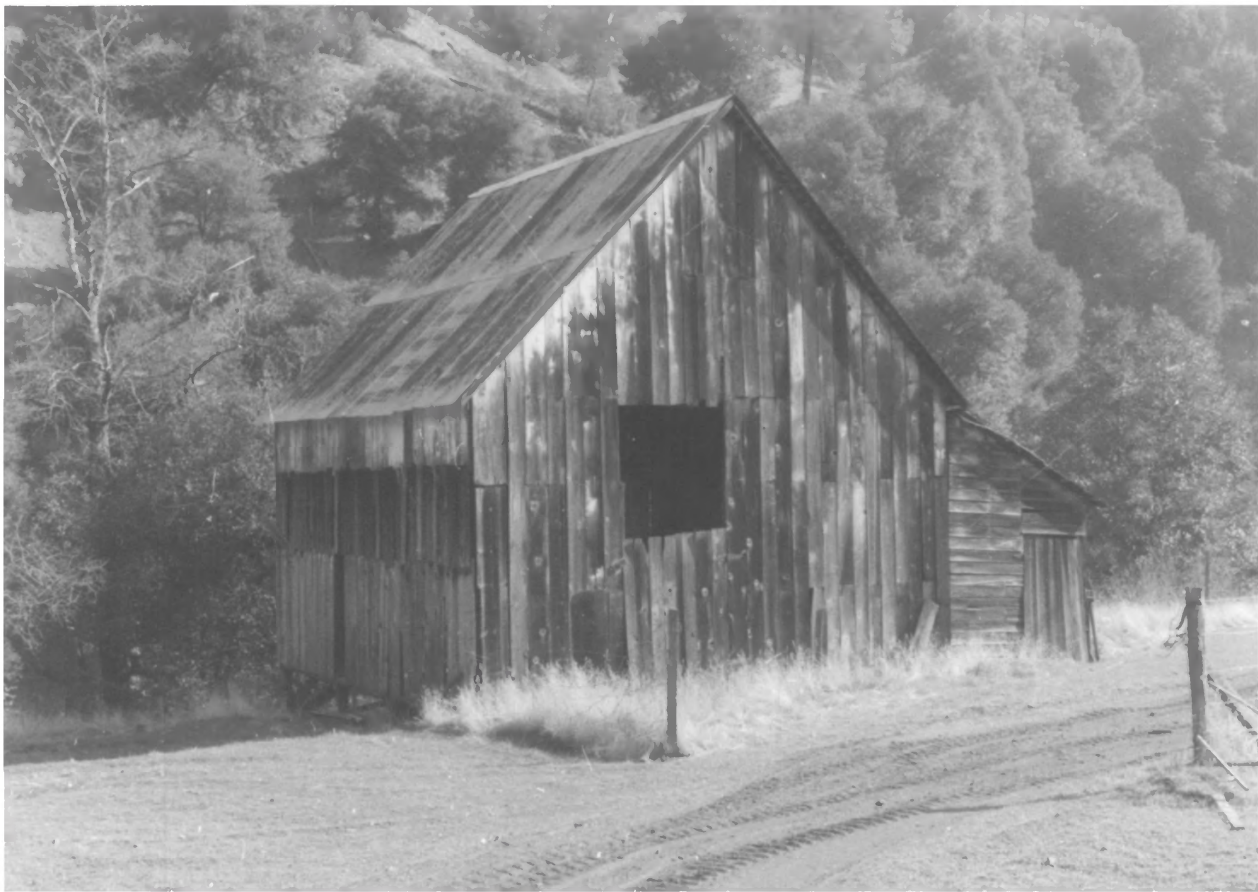
Helena Historic District <sup>5</sup>  
Helena, Trinity County, California

Eric Woods

Trinity County Historical Society  
PO Box 333 Weaverville CA.

1974

Schlomer Feed and Livery Stable,  
# 10 of 16 (Map #5)



Halena Historic District  
Halena, Trinity County, California

Eric Woods

Trinity County Historical Society  
PO Box 333 Weaverville CA

1974

Mackel Barn (Map # 6)

# 11 of 16



# Building #7

Helena Historic District  
Helena, Trinity County, California  
Alice Jones  
Trinity County Historical Society  
PO Box 333, Weaverville CA.

March 1971

Brick Post Office, to the left is Schlo-  
mer Feed and Livery & Currie Cottage;  
looking NW (Map #7, #5, and #4)

# 12 of 16





Helena Historic District  
Helena, Trinity County, California  
Claude Hootch  
Trinity County Historical Society  
PO Box 333 Weaverville CA.

1954

Brick Post Office (built as Meckel  
store in 1858) Map #7

# 13 of 16



Helena Historic District  
Helena, Trinity County, California  
Alice Jones

Trinity County Historical Society  
PO Box 333 Weaverville CA

June 1981

One of four rental buildings constructed along the route to old horse and wagon bridge (Map # 8-11)

# 14 of 16



# Building #14

Helena Historic District  
Helena, Trinity County, California  
Alice Jones  
Trinity County Historical Society  
PO Box 333 Weaverville CA.  
March 1981  
Schlomer's Brick Building (Map #14)  
# 15 of 16



# Map #16 - Helena County Cemetery

Helena Historic District  
Helena, Trinity County, California  
Alice Jones  
Trinity County Historical Society  
PO Box 333 Weaverville CA.  
November 1968  
Helena Cemetery (Map #16)  
#16 of 16