



Baring Creek Cabin / SUN CAMP FIREGUARD CABIN
Glacier National Park, St Mary, MT

Leroy Dudley, Photographer

July 1998

Glacier National Park Historic Photograph File

Viewing Southeast



Baring Creek Cabin / SUN CAMP FIREGUARD CABIN

Glacier National Park, St. Mary, MT

Heroy Dudley, Photographer

July, 1998

Glacier National Park Historic Photograph File

Viewing Northeast



Baring Creek Cabin / SUN CAMP FIREGUARD CABIN

Glacier National Park, St Mary MT

Leroy Dudley, Photographer

July, 1998

Glacier National Park Historic Photograph File
Viewing North - Interior from doorway



Baring Creek Cabin / SUN CAMP
FIREGUARD CABIN
Glacier National Park, St Mary, MT

Leroy Dudley, Photographer

July 1998

Glacier National Park Historic Photograph File

Viewing Southwest - Interior Southwest corner



FIRST AID KIT

NORVA
Power for Today's Business Needs

Baring Creek Cabin / SUN CAMP FIREGUARD
CABIN

Glacier National Park, St. Mary, MT

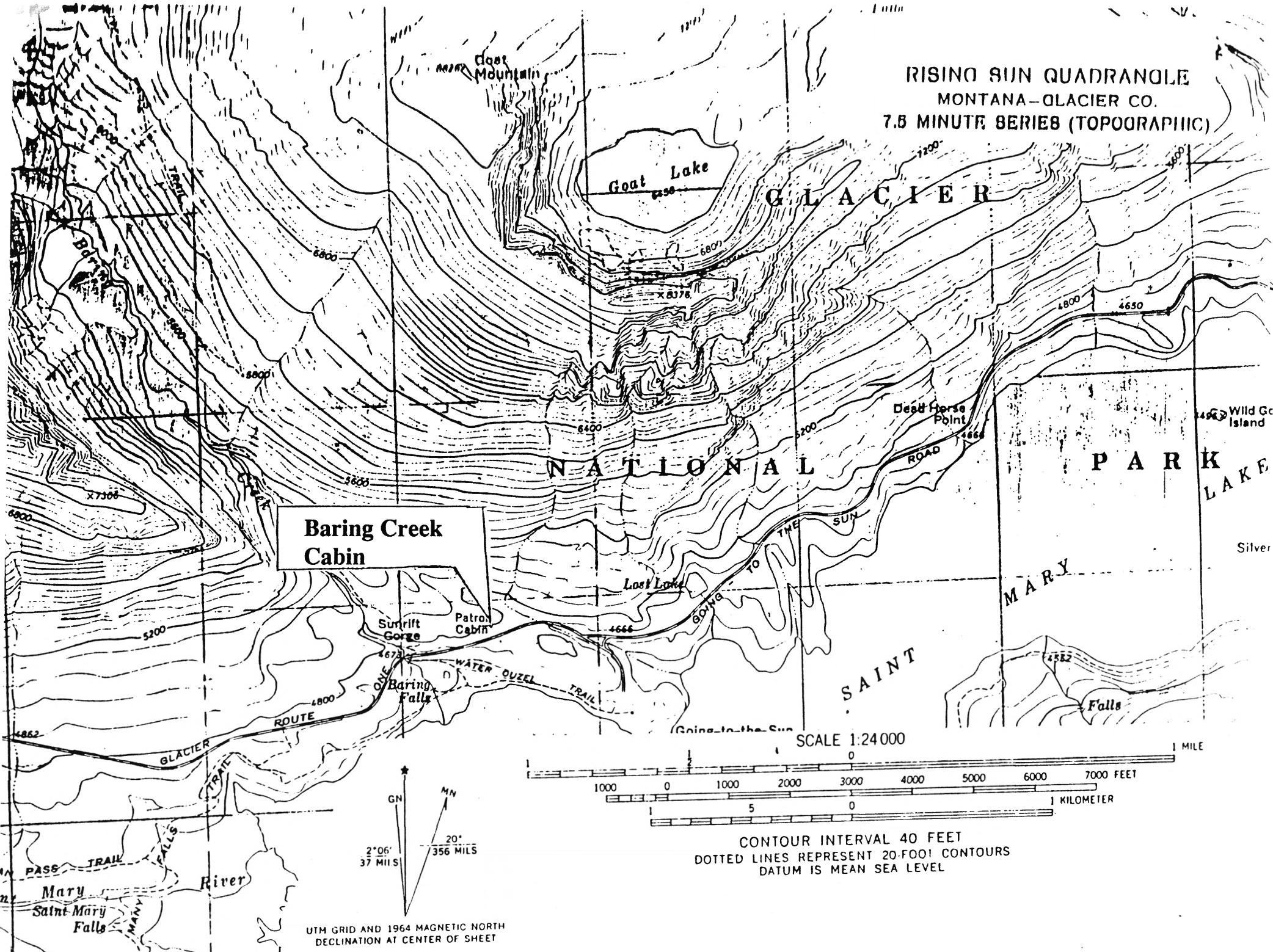
Leroy Dudley, Photographer

July 1998

Glacier National Park Historic Photograph File

Viewing Southeast-Interior Southeast Corner

RISING SUN QUADRANGLE
 MONTANA-GLACIER CO.
 7.5 MINUTE SERIES (TOPOGRAPHIC)



Baring Creek Cabin

Goat Lake
 6350

GLACIER

NATIONAL

PARK LAKE

SAINT

MARY

Lost Lake

Dead Horse Point

Wild Ge Island

Silver

Patron Cabin

Sunrift Gorge

Baring Falls

WATER OUZEL TRAIL

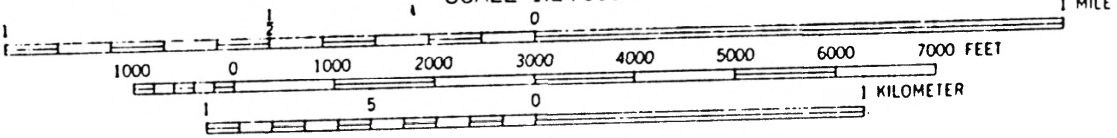
GOING TO THE SUN

GLACIER ROUTE

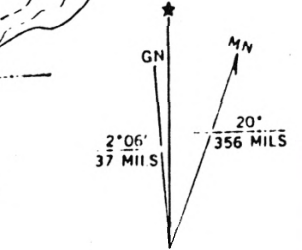
MARY RIVER

Saint Mary Falls

SCALE 1:24 000



CONTOUR INTERVAL 40 FEET
 DOTTED LINES REPRESENT 20-FOOT CONTOURS
 DATUM IS MEAN SEA LEVEL



UTM GRID AND 1964 MAGNETIC NORTH DECLINATION AT CENTER OF SHEET