

512



# National Register of Historic Places Registration Form

This form is for use in nominating or requesting determinations for individual properties and districts. See instructions in National Register Bulletin, How to Complete the National Register of Historic Places Registration Form. If any item does not apply to the property being documented, enter "N/A" for "not applicable." For functions, architectural classification, materials, and areas of significance, enter only categories and subcategories from the instructions. Place additional certification comments, entries, and narrative items on continuation sheets if needed (NPS Form 10-900a).

## 1. Name of Property

Historic name Grand Army of the Republic (GAR) Memorial Arch  
Other names/site number Heritage Park Memorial Arch; KHRI #061-2790-00001  
Name of related Multiple Property Listing N/A

## 2. Location

Street & number 500 N Washington Street (corner of 6<sup>th</sup> & Washington) not for publication  
City or town Junction City vicinity  
State Kansas Code KS County Geary Code 061 Zip code 66441

## 3. State/Federal Agency Certification

As the designated authority under the National Historic Preservation Act, as amended,  
I hereby certify that this x nomination     request for determination of eligibility meets the documentation standards for registering properties in the National Register of Historic Places and meets the procedural and professional requirements set forth in 36 CFR Part 60.

In my opinion, the property x meets     does not meet the National Register Criteria. I recommend that this property be considered significant at the following level(s) of significance:  
    national     statewide x local Applicable National Register Criteria: x A     B x C     D

Patrick Zollner 11-21-16  
Signature of certifying official/Title Patrick Zollner, Deputy SHPO Date

Kansas State Historical Society  
State or Federal agency/bureau or Tribal Government

In my opinion, the property     meets     does not meet the National Register criteria.  
Signature of commenting official \_\_\_\_\_ Date \_\_\_\_\_  
Title \_\_\_\_\_ State or Federal agency/bureau or Tribal Government \_\_\_\_\_

## 4. National Park Service Certification

I hereby certify that this property is:  
X entered in the National Register     determined eligible for the National Register  
    determined not eligible for the National Register     removed from the National Register  
    other (explain:) \_\_\_\_\_

Alysis Abernathy 1-11-17  
Signature of the Keeper Date of Action

Grand Army of the Republic (GAR) Memorial Arch  
Name of Property

Geary County, Kansas  
County and State

**5. Classification**

**Ownership of Property**  
(Check as many boxes as apply.)

**Category of Property**  
(Check only **one** box.)

**Number of Resources within Property**  
(Do not include previously listed resources in the count.)

<input type="checkbox"/>	private
<input checked="" type="checkbox"/>	public - Local
<input type="checkbox"/>	public - State
<input type="checkbox"/>	public - Federal

<input type="checkbox"/>	building(s)
<input type="checkbox"/>	district
<input type="checkbox"/>	site
<input checked="" type="checkbox"/>	structure
<input type="checkbox"/>	object

<u>Contributing</u>	<u>Noncontributing</u>	
		buildings
		sites
1		structures
		objects
<b>1</b>	<b>0</b>	<b>Total</b>

**Number of contributing resources previously listed in the National Register**

0

**6. Function or Use**

**Historic Functions**  
(Enter categories from instructions.)

**Current Functions**  
(Enter categories from instructions.)

RECREATION & CULTURE: Monument  
\_\_\_\_\_  
\_\_\_\_\_  
\_\_\_\_\_  
\_\_\_\_\_  
\_\_\_\_\_

RECREATION & CULTURE: Monument  
\_\_\_\_\_  
\_\_\_\_\_  
\_\_\_\_\_  
\_\_\_\_\_  
\_\_\_\_\_

**7. Description**

**Architectural Classification**  
(Enter categories from instructions.)

**Materials**  
(Enter categories from instructions.)

LATE 19<sup>TH</sup> AND 20<sup>TH</sup> CENTURY REVIVAL/  
Classical Revival  
\_\_\_\_\_  
\_\_\_\_\_  
\_\_\_\_\_  
\_\_\_\_\_

foundation: Stone: limestone  
walls: Stone: limestone  
\_\_\_\_\_  
roof: N/A  
other: Metal: zinc (statue)  
Stone: marble (2 plaques)

Grand Army of the Republic (GAR) Memorial Arch  
Name of Property

Geary County, Kansas  
County and State

---

## Narrative Description

### Summary

Located in Junction City (2010 pop. 23,927), Geary County, Kansas, the GAR Memorial Arch (1898) sits at the northeast corner of Heritage Park, facing northeast (*Figures 1, 2, & 3*). The city park occupies a full city block and is bounded by Washington Street to the east, West 6<sup>th</sup> Street to the north, North Jefferson Street to the west and West 5<sup>th</sup> Street to the south. The monument was constructed in the late 19<sup>th</sup> Century Classical Revival, principally of rusticated, coursed ashlar, native Kansas limestone. Cornice lines, capitals, keystones and other decorative elements are of smooth-face limestone masonry units. The façade of the monument displays the date of construction at a vertical angle within the keystone, in addition to a marble marker inset within each pier. The monument supports an 8-foot zinc statue of a volunteer American soldier standing upon a smooth-faced ashlar base, with 8-inch siege and garrison mortars to either side that are set upon rusticated, ashlar limestone bases. The monument is in fair condition, with previous work involving cleaning and repointing.

---

### Elaboration

The GAR Arch was constructed in 1898 to memorialize troops having served during the United States Civil War. It occupies a prominent location within Junction City (Geary County, Kansas) at the northeast corner of the city's Heritage Park at the intersection of North Washington Street and 6<sup>th</sup> Street. North Washington is the principal thoroughfare through the heart of the historic commercial district that sits opposite 6<sup>th</sup> Street from the monument. The arch is sited at an oblique angle, giving it a highly visible façade.

The late 19<sup>th</sup> Century Classical Revival arch is constructed of coursed ashlar native Kansas limestone that appears to be consistent with the Fort Riley basal formation. Due to the excellent condition of the limestone, it is likely to have been quarried from the Cottonwood formation, which was known at the time of the arch's construction for being particularly hard. The monument measures 35 feet in height by 23 feet in width. Each pier measures 7 feet-6 inches square. Each side of each pier was constructed with a pair of engaged Doric columns. The columns have rusticated limestone shafts, while the base is smooth-faced limestone and the entablature a mixture of the two. Above the engaged columns on the façade sit two additional, fully rusticated engaged columns. The impost of the inward-facing engaged columns support a semi-circular arch, constructed of rusticated voussoirs and a smooth-faced keystone. The keystone displays the date of construction (1898) at a vertical angle in bas relief. Above the arch is an entablature created of a mix of rough-cut and smooth limestone, but unlike the lower entablature, the cornice is rough-cut rather than smooth. Sitting upon the entablature is a rusticated frieze with engaged columns, topped by a simple smooth cornice.

Memorializing elements upon the arch consist of two marble markers embedded between the engaged columns of the façade and, atop the monument, mortars flanking a statue of a volunteer American soldier. The grey marble marker on the southeast pier reads: "In memory of/the soldiers and sailors of/1861-1865/who inspired by patriotism/freely offered their lives/for the maintenance of/an undivided country." The marker on the northwest pier reads: "1861-1865/Total Enlistment/2,778,304/Killed in Battle/67,050/Died of Wounds received in action/43,012/Died from other causes/249,456" with appropriate spacing between each count. Each marker has a decorative motif at the bottom, which is heavily eroded on each. The eight-foot tall soldier statue centered over the arch is constructed of zinc and bears the typical patina of the weathered material. Flanking the statue are two eight-inch siege and garrison mortars with matching patina, indicating that they may have been zinc plated to prevent corrosion.

Generally, the monument is in fair condition. Given its age, the arch is structurally in good condition; however, previous cleaning efforts (1996) appear to have been inappropriately harsh. The rough cut limestone masonry units have been worn smooth, in sharp contrast to similar nearby construction of the same type. The marble markers have also suffered from a harsh cleaning method, as the engraved text and decorative motifs are now highly illegible. Previous repointing and patching also appears to have been accomplished with an inappropriate mortar mix that does not match the original in appearance, texture or hardness (contains high amounts of gray Portland cement). Joints have been sealed with an inappropriate color of sealant.

Grand Army of the Republic (GAR) Memorial Arch  
Name of Property

Geary County, Kansas  
County and State

**8. Statement of Significance**

**Applicable National Register Criteria**

(Mark "x" in one or more boxes for the criteria qualifying the property for National Register listing.)

- A Property is associated with events that have made a significant contribution to the broad patterns of our history.
- B Property is associated with the lives of persons significant in our past.
- C Property embodies the distinctive characteristics of a type, period, or method of construction or represents the work of a master, or possesses high artistic values, or represents a significant and distinguishable entity whose components lack individual distinction.
- D Property has yielded, or is likely to yield, information important in prehistory or history.

**Criteria Considerations**

(Mark "x" in all the boxes that apply.)

Property is:

- A Owned by a religious institution or used for religious purposes.
- B removed from its original location.
- C a birthplace or grave.
- D a cemetery.
- E a reconstructed building, object, or structure.
- F a commemorative property.
- G less than 50 years old or achieving significance within the past 50 years.

**Areas of Significance**

Social History

Architecture

**Period of Significance**

1898

**Significant Dates**

1898

**Significant Person**

(Complete only if Criterion B is marked above.)

N/A

**Cultural Affiliation**

N/A

**Architect/Builder**

F. A. Gardner (Army architect and superintendent of the quartermaster's department)

assisted by Captain George Ruhlen

Contractor: Ziegler and Dalton

**Period of Significance (justification)**

The period of significance for the GAR Memorial Arch is 1898, the year of construction and dedication.

**Criteria Considerations (justification)**

Although commemorative in nature, the arch meets the registration requirements for Criteria Consideration F because it has gained significance for its association with Junction City's social history at the turn of the 19<sup>th</sup> century. Further, the arch's design is a representative example of memorial architecture in Kansas during this time period.

Grand Army of the Republic (GAR) Memorial Arch  
Name of Property

Geary County, Kansas  
County and State

---

## Narrative Statement of Significance

### Summary

The Grand Army of the Republic (GAR) Memorial Arch is nominated to the National Register of Historic Places under Criteria A and C for its association with Junction City's social history at the end of the 19<sup>th</sup> century and as a representative example of memorial architecture at the time. The GAR Memorial Arch represents the concerted efforts of the Junction City community to memorialize the sacrifices of Civil War soldiers and express support for the military community. Located fewer than three miles south and west of Fort Riley's Main Post Area, Junction City has long held a close relationship with the fort and the soldiers who occupied it. Planning began in February 1897 with the intent for the arch's dedication to coincide with the Grand Army of the Republic's 5<sup>th</sup> District reunion held in Junction City in September 1898. Even though local GAR membership waned in the 1890s, the arch was dedicated on schedule "In memory of the soldiers and sailors of 1861-1865 who, inspired by patriotism, freely offered their lives for the maintenance of an undivided county."<sup>1</sup>

Erected more than 30 years after the end of the Civil War, the GAR Memorial Arch signified more than respect for Civil War veterans. At the turn of the century, the volunteer soldier statue mounted atop the arch represented an iconic image of martial heroism and sacrifice and a unifying symbol of national pride that was repeated in monuments across the nation.<sup>2</sup> After the bombing of the USS Maine in February 1898, which precipitated the events of the Spanish-American War, the monument took on even greater significance as newspapers filled with accounts of escalating tension and war. Supporting the monument was thus a patriotic act by which Junction City residents and businesses showed their commitment to the ideals of the nation and their support for the military, both locally, at Fort Riley, and nationally, as the United States prepared to send soldiers to war. From the date of its dedication on September 9, 1898, the memorial arch was and remains an important landmark and cultural touchstone for the Junction City community. It is pictured in historic photos, including 1898 and 1908 photographs created by Joseph J. Pennell, and parade routes routinely pass by the monument. Located in the heart of Junction City's historic downtown district, the arch is now the official symbol of Junction City, appearing in the city's Chamber of Commerce.

---

### Elaboration

After Kansas became a territory in 1854, the Cincinnati–Manhattan Company made a failed effort in 1855 to site a town at the junction of the Smoky Hill and Republican Rivers, originally called Millard.<sup>3</sup> Junction City's official founding dates to 1857, when the Junction City Town Company was incorporated and the site identified. That same year, the Kansas Territorial Council established Davis County, named after then-Secretary of War Jefferson Davis. The state legislature formally incorporated Junction City in February 1859.<sup>4</sup> The city's history has been tied both commercially and socially with that of Fort Riley, established in 1852, from its beginnings. During the Civil War, encamped soldiers frequented Junction City businesses regularly. Soldiers both contributed to the local economy and, at times, disrupted it, as when they "utterly demolished" the office of the allegedly pro-secession *Kansas Frontier* in 1862 and killed a local man.<sup>5</sup> Junction City's population grew rapidly in the first decade after its incorporation, from 217 in 1860 to 2,778 in 1870, and boomed again from 2,684 in 1880 to 4,502 in 1890.<sup>6</sup> The city owes its success to a number of factors: its site on the Smoky Hill and Republican Rivers; its proximity to Fort Riley; and its position on major roads and railways, such as the Smoky Hill route on the Santa Fe Trail and the Union Pacific Railroad. Following unsuccessful attempts to change the county's name in 1862, 1864, and in the 1870s, Davis County residents officially voted to change the county name to Geary County in 1888.

The Grand Army of the Republic was a national fraternal organization of Civil War soldiers dedicated to advancing the interests of veterans by providing "mutual protection, aid and education" to them and their families.<sup>7</sup> Founded in April

---

<sup>1</sup> As previously noted, this is the inscription on the arch's southeast pier.

<sup>2</sup> Carol A. Grissom & Ronald S. Harvey, "The Conservation of American War Memorials Made of Zinc," *Journal of the American Institute of Conservation* 42, no. 1 (2003), 21-38; John Pettegrew, "The Soldier's Faith: Turn-of-the-Century Memory of the Civil War and the Emergence of Modern American Nationalism," *Journal of Contemporary History* 31, no. 1 (January 1996): 49-73.

<sup>3</sup> William G. Cutler, "Davis County: Early History," in *History of the State of Kansas* (Chicago: Andreas Publishing Co., 1883), part 2, <http://www.kancoll.org/books/cutler/davis/davis-co-p2.html>.

<sup>4</sup> "Geary County History," Geary County Historical Society, <http://www.gchsweb.org/p/geary-county-history.html>.

<sup>5</sup> Cutler, "Davis County: Early History," part 2.

<sup>6</sup> U.S. Decennial Census, 1860–1890.

<sup>7</sup> Robert Burns Beath, *History of the Grand Army of the Republic* (New York: Bryan, Taylor & Company, 1889), 95.

Grand Army of the Republic (GAR) Memorial Arch  
Name of Property

Geary County, Kansas  
County and State

1866, the national organization focused its efforts on obtaining federal pensions for veterans, caring for disabled soldiers, and establishing homes and schools for soldiers and their families and survivors. The GAR was organized into state departments that consisted of local camps or posts comprised of individual officers and members. The GAR incorporated Kansas's Veteran Brotherhood as a state department on December 7, 1866, and in its first annual report, the Department of Kansas claimed the existence of 32 state camps and a membership of 1,750.<sup>8</sup> One of the state department's first priorities was to establish a resolution calling for "the erection of a monument to the memory of Kansas soldiers who had fallen in defense of their country during the rebellion," as well as the establishment of a Soldiers' Home. The GAR eventually achieved both goals; the state built a home for veterans in Leavenworth in 1884, and in 1890, an orphanage in Atchison and a state soldiers' home at Fort Dodge. The GAR also succeeded in erecting the Memorial Building in 1914 using Civil War compensation claim funds from the federal government; the building became home not only to the GAR but also the Kansas State Historical Society.<sup>9</sup>

In the 1870s, as Reconstruction came to an end, GAR membership dwindled, and many state posts and departments became delinquent in submitting dues and reports.<sup>10</sup> Following this pattern, the Department of Kansas was accorded provisional status in 1872 and did not regain formal recognition as a permanent department until March 16, 1880.<sup>11</sup> The national GAR was experiencing a resurgence of interest and membership at that time, tied to the disillusionment of the North with the end of Reconstruction and the perceived need for Union solidarity.<sup>12</sup> After the 1880 reorganization, GAR membership across Kansas grew rapidly. An 1889 history of the Grand Army of the Republic reports that in 1881, the Department of Kansas consisted of 1,041 members, growing to 6,632 in 1882 and 16,551 in 1883.<sup>13</sup>

The Junction City, Kansas, chapter of the Grand Army of the Republic was chartered October 5, 1882, and given the designation of Post No. 132.<sup>14</sup> Junction City thus joined the statewide revival of the GAR at a time when membership was skyrocketing. As a contemporary commentator remarked on June 10, 1882, "A year ago I suppose there was not a dozen organizations in the state; to-day there are more than sixty.... It is a wonder to me that the old soldiers of Davis County [now Geary County] don't wheel into line and organize a post of the G.A.R. In my humble opinion no old soldier who has a clear record and an honorable discharge can afford to withhold his application."<sup>15</sup> Historic GAR post reports, combined with the historical records of the Sons of Union Veterans of the Civil War, the legal successor to the GAR, support this commentator's claim, showing that the vast majority of posts nos. 1 through 150 were founded in 1882.<sup>16</sup> Ultimately, at least 500 GAR posts were chartered in Kansas.<sup>17</sup>

At the first meeting of Post 132, held October 16, 1882, 20 founding members were mustered in the GAR ranks. By 1887, Junction City's GAR post had grown to 148 members, but membership began to decline due to outgoing transfers and veteran deaths. By 1890, Post 132 consisted of 95 members, and in December 1897, when planning and fundraising for the memorial arch were in full swing, membership had dropped to 62 members.<sup>18</sup>

Planning of the arch commenced February 12, 1897, when "the question of a monument to the memory of G.A.R. comrades that are gone was brought up" (Junction City Weekly Union). From the very beginning, the GAR envisioned the arch as a central part of the city, determining that "the northeast corner of the city park would be the most suitable place for such a monument."<sup>19</sup> The GAR committee in charge of planning the monument raised funds for the estimated \$1,800 project by conscripting local schoolchildren to sell buttons at \$.50 apiece and by soliciting subscriptions from area

---

<sup>8</sup> Beath, *History of the Grand Army of the Republic*, 572. However, there is reason to suspect that those totals were inaccurate, as the GAR did not require posts to submit membership dues corresponding to membership totals in 1886-67.

<sup>9</sup> Kansas State Historical Society, "Grand Army of the Republic," *Kansapedia*, 2009, accessed online at <https://www.kshs.org/kansapedia/grand-army-of-the-republic/12068>.

<sup>10</sup> Kansas State Historical Society, "Grand Army of the Republic: Organizational History," <http://www.kshs.org/p/grand-army-of-the-republic-organizational-history/13759>

<sup>11</sup> Beath, 573.

<sup>12</sup> KSHS, "Grand Army of the Republic: Organizational History."

<sup>13</sup> Beath, 574.

<sup>14</sup> GAR Post 132 Charter, GAR Post 132 (Junction City) Descriptive Book, 1882-1929, scanned photocopy, accessed online via Ancestry.com.

<sup>15</sup> *Junction City Union* (June 10, 1882): np.

<sup>16</sup> "Kansas Historical Summary," Grand Army of the Republic Records Project, accessed online via [garrecords.org](http://garrecords.org); GAR Post 132 (Junction City) Quarterly Adjutant Reports, 1882-1933, accessed online via Ancestry.com.

<sup>17</sup> "Kansas Historical Summary," GAR Records Project; "GAR: Organizational History," KSHS.

<sup>18</sup> GAR Post 132 Quarterly Adjutant Reports.

<sup>19</sup> *Junction City Weekly Union* (March 5, 1897): np.

Grand Army of the Republic (GAR) Memorial Arch  
Name of Property

Geary County, Kansas  
County and State

businesses, organizations, and residents. "Every local citizen of the county will, of course, place his shoulder to the wheel and help make the monument a grand success," the Junction City Weekly Union reported November 5, 1897. On July 4, 1898, the keystone for the monument was laid and a time capsule placed within it containing a copy of the local GAR charter, items related to the GAR and Relief Corps No. 6, a list of soldiers in Geary County, a list of subscribers to the monument fund, a photograph of the monument and a fundraising button, a copy of the Junction City Union, an 1861 address to a Union regiment, a letter from a GAR member "to be answered later on," a postage paid envelope, and a dispatch "announcing the destruction of Cervera's fleet and capture of Santiago."<sup>20</sup>

The monument was dedicated in September 1898, when the Grand Army of the Republic's 5<sup>th</sup> District reunion was held. The dedication occurred September 9, 1898, before an audience of "no less than 6,000."<sup>21</sup> Erected more than 30 years after the end of the war as local GAR membership waned, the GAR Memorial Arch signified more than respect for Civil War veterans. At the turn of the century, the volunteer soldier statue mounted atop the arch represented an iconic image of martial heroism and sacrifice and a unifying symbol of national pride that was repeated in monuments across the nation.<sup>22</sup> After the bombing of the USS Maine in February 1898, which precipitated the events of the Spanish-American War, the monument took on even greater significance as newspapers filled with accounts of escalating tension and war. Supporting the monument was thus a patriotic act by which Junction City residents and businesses showed their commitment to the ideals of the nation and their support for the military, both locally, at Fort Riley, and nationally, as the United States prepared to send soldiers to war. A large tent was erected in the East 7<sup>th</sup> Street due to the hard rain that September day. The entire town was at the dedication. School was let out since all of the children were involved in raising money for the arch. The children led the parade down Washington Street with little American flags flying. The unveiling was done on the 5<sup>th</sup> District of the GAR meeting held in Junction City. The Mayor of Junction City gave a speech welcoming all of the guests to our wonderful city. There were several speakers including Captain JG Waters made the dedication speech. Other speakers were Prof. Frank Nelson, Republican candidate for state superintendent of public instruction, Hon. John MacDonald, editor of the *Western School Journal*, Topeka, and Chaplain Barry of Fort Riley.

The dedication concluded with the children led by the city band singing "America" and the "Battle Hymn of the Republic." As the music concluded the cord was pulled by Miss Cora Davidson, the young granddaughter of Major Davidson (Chairman for the arch project). Three cheers from the crowd followed and the band played "Marching through Georgia". Then it began to rain very hard. The program was moved to the tent. In spite of the rain, the program continued. Hon. JG Waters delivered the dedication address in which he commented that the memorial was "one of the most finished and patriotic efforts ever given to Junction City." Then the monument was "delivered to the city" and the Star Spangled Banner was sung by Mrs. T.W. Dorn wife of the city clerk, brought the proceedings to a close. The remainder of the programs was done at the Methodist and the Episcopal Churches because the tent was no help with the downpours of mother nature. Comfortable sleeping arrangements were made for the elderly with rooms in the Bartell Hotel for free. From the date of its dedication, the memorial arch was and remains an important landmark and cultural touchstone for the Junction City community. It is pictured in historic photos, including 1898 and 1908 photographs created by Joseph J. Pennell, and parade routes routinely pass by the monument. Located in the heart of Junction City's historic downtown district, the arch is now the official symbol of Junction City, appearing in the city's Chamber of Commerce logo (*Figure 9*).

The arch commemorates the loss of lives associated with the United States Civil War (1861-1865). It is the culmination of local fundraising efforts that were part of a national healing effort after four years in which the nation was at war with itself. The strong relationship with Fort Riley and the Army at large has been a cornerstone for the Junction City. The monument has and continues to be an important commemorative memorial at a local, regional and national level. City parade routes and events have and continue to incorporate the monument, with special prominence during Veteran's and Memorial Day events

<sup>20</sup> *Junction City Union* (July 5, 1898): np.

<sup>21</sup> *Junction City Union* (September 9, 1898): np.

<sup>22</sup> Grissom & Harvey, "The Conservation of American War Memorials Made of Zinc," 21-38; Pettegrew, "'The Soldier's Faith',"

Grand Army of the Republic (GAR) Memorial Arch  
Name of Property

Geary County, Kansas  
County and State

**9. Major Bibliographical References**

**Bibliography** (Cite the books, articles, and other sources used in preparing this form.)

- Beath, Robert Burns. *History of the Grand Army of the Republic*. New York: Bryan, Taylor & Company, 1889.
- Blight, David. *Race and Reunion: The Civil War in American Memory*. Cambridge, MA: Harvard University Press, 2002.
- GAR Post 132 (Junction City) Quarterly Adjutant Reports, 1882-1933, Ancestry.com.
- GAR Post 132 (Junction City) Descriptive Book, 1882-1929, Ancestry.com.
- Grand Army of the Republic Records Project, garrecords.org.
- Grissom, Carol A. and Ronald S. Harvey. "The Conservation of American War Memorials Made of Zinc." *Journal of the American Institute of Conservation* 42, no. 1 (2003): 21-38.
- Junction City Union* (July 5, 1898) & (September 16, 1898).
- Junction City Weekly Union* (June 10, 1882), (October 21, 1882), (February 12, 1897), (March 5, 1897), & (November 5, 1897).
- Pettegrew, John. "The Soldier's Faith': Turn-of-the-Century Memory of the Civil War and the Emergence of Modern American Nationalism." *Journal of Contemporary History* 31, no. 1 (January 1996): 49-73.
- Roster of the Members and Posts: Grand Army of the Republic, Department of Kansas, 1894, *Kansas Memory* (kansasmemory.org).

**Previous documentation on file (NPS):**

- preliminary determination of individual listing (36 CFR 67 has been requested)
- previously listed in the National Register
- previously determined eligible by the National Register
- designated a National Historic Landmark
- recorded by Historic American Buildings Survey # \_\_\_\_\_
- recorded by Historic American Engineering Record # \_\_\_\_\_
- recorded by Historic American Landscape Survey # \_\_\_\_\_

**Primary location of additional data:**

- State Historic Preservation Office
- Other State agency
- Federal agency
- Local government
- University
- Other
- Name of repository: Kansas Historical Society

Historic Resources Survey Number (if assigned): \_\_\_\_\_ n/a \_\_\_\_\_

**10. Geographical Data**

**Acreage of Property** < One

**Provide latitude/longitude coordinates OR UTM coordinates.**

(Place additional coordinates on a continuation page.)

**Latitude/Longitude Coordinates**

Datum if other than WGS84: \_\_\_\_\_  
(enter coordinates to 6 decimal places)

1 39.028102 -96.829728  
Latitude: Longitude:

3 \_\_\_\_\_  
Latitude: Longitude:

2 \_\_\_\_\_  
Latitude: Longitude:

4 \_\_\_\_\_  
Latitude: Longitude:



Grand Army of the Republic (GAR) Memorial Arch  
Name of Property

Geary County, Kansas  
County and State

**Verbal Boundary Description** (describe the boundaries of the property)

The GAR Arch is bound by North Washington Street to the east and West Sixth Street to the north. To the west and south lies Heritage Park, upon which the Arch sits.

**Boundary Justification** (explain why the boundaries were selected)

This nomination includes only the monument and the immediate ground upon which it sits. Although sited within a larger publically-owned landscape, the arch's location was selected more for its relationship with downtown and the city's main thoroughfare than for its relationship with the park.

---

**11. Form Prepared By**

name/title Karen Carroll/Junction City Rotary Club President, Katherine Goerl/Geary County Historical Museum  
Executive Director, Theresa A. de la Garza/Fort Riley Historic Architect

organization Rotary Club date 09/20/16

street & number 1980 2680 Lane telephone (785) 307-1751

city or town Chapman state KS zip code 66441

e-mail Kcarroll2121@gmail.com

---

**Property Owner:** (complete this item at the request of the SHPO or FPO)

name City of Junction City/ATTN: Shawna Settles Shawna.settles@jcks.com

street & number 700 N Jefferson St telephone (785) 238-3103

city or town Junction City state KS zip code 66441

**Paperwork Reduction Act Statement:** This information is being collected for applications to the National Register of Historic Places to nominate properties for listing or determine eligibility for listing, to list properties, and to amend existing listings. Response to this request is required to obtain a benefit in accordance with the National Historic Preservation Act, as amended (16 U.S.C.460 et seq.).

**Estimated Burden Statement:** Public reporting burden for this form is estimated to average 100 hours per response including time for reviewing instructions, gathering and maintaining data, and completing and reviewing the form. Direct comments regarding this burden estimate or any aspect of this form to the Office of Planning and Performance Management, U.S. Dept. of the Interior, 1849 C. Street, NW, Washington, DC.

Grand Army of the Republic (GAR) Memorial Arch  
Name of Property

Geary County, Kansas  
County and State

---

### Additional Documentation

---

Submit the following items with the completed form:

#### Photographs

Submit clear and descriptive photographs. The size of each digital image must be 1600x1200 pixels (minimum), at 300 ppi (pixels per inch) or larger. Key all photographs to a sketch map or aerial map. Each photograph must be numbered and that number must correspond to the photograph number on the photo log. For simplicity, the name of the photographer, photo date, etc. may be listed once on the photograph log and doesn't need to be labeled on every photograph.

#### Photograph Log

Name of Property: G.A.R. Memorial Arch

City or Vicinity: Junction City

County: Geary State: Kansas

Photographer: Amanda K. Loughlin (unless otherwise noted)

Date

Photographed: September 27, 2016

Description of Photograph(s) and number, include description of view indicating direction of camera:

**001 of 007:** Looking SW at downtown side (NE face) of arch

**002 of 007:** Looking NE at park-side (SW) face of arch

**003 of 007:** Keystone on downtown side of arch (NE face)

**004 of 007:** West plaque, NE face

**005 of 007:** East plaque, NE face

**006 of 007:** Underside of arch, west side

**007 of 007:** Mortar on the west side at the top of the arch. Picture taken by Bruce McMillan (2016).

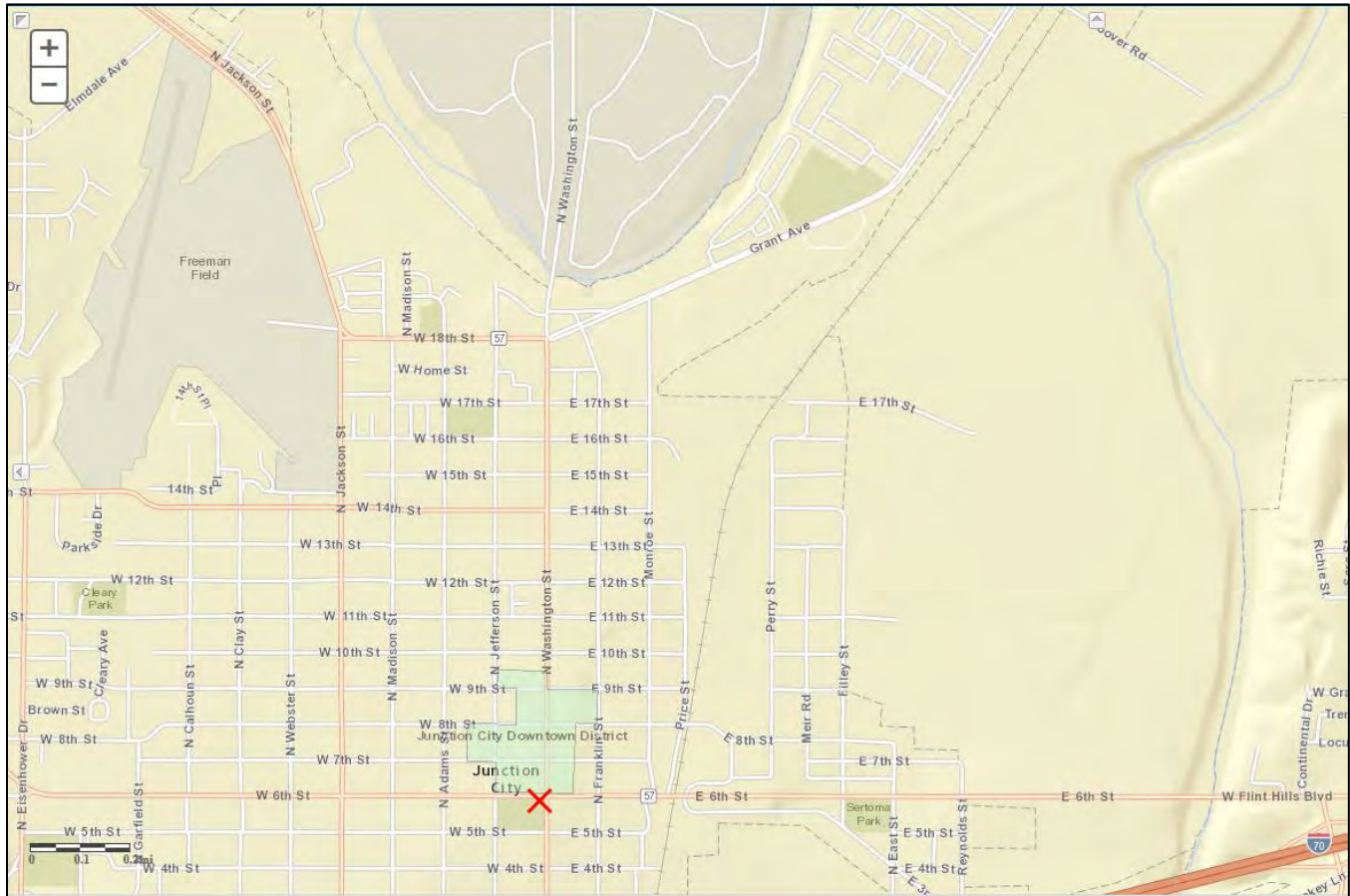
#### Figures

Include GIS maps, figures, scanned images below.

Grand Army of the Republic (GAR) Memorial Arch  
Name of Property

Geary County, Kansas  
County and State

**Figure 1.** Contextual map, showing location of Arch ("X") in relation to Junction City's Downtown Historic District and Fort Riley (top of image). North is up. Source: Kansas Historic Resources Inventory (kshs.org/khri)



Grand Army of the Republic (GAR) Memorial Arch  
Name of Property

Geary County, Kansas  
County and State

**Figure 2.** 2014 Google aerial image, showing location of arch in park (denoted by star).  
North is up.





Grand Army of the Republic (GAR) Memorial Arch  
Name of Property

Geary County, Kansas  
County and State

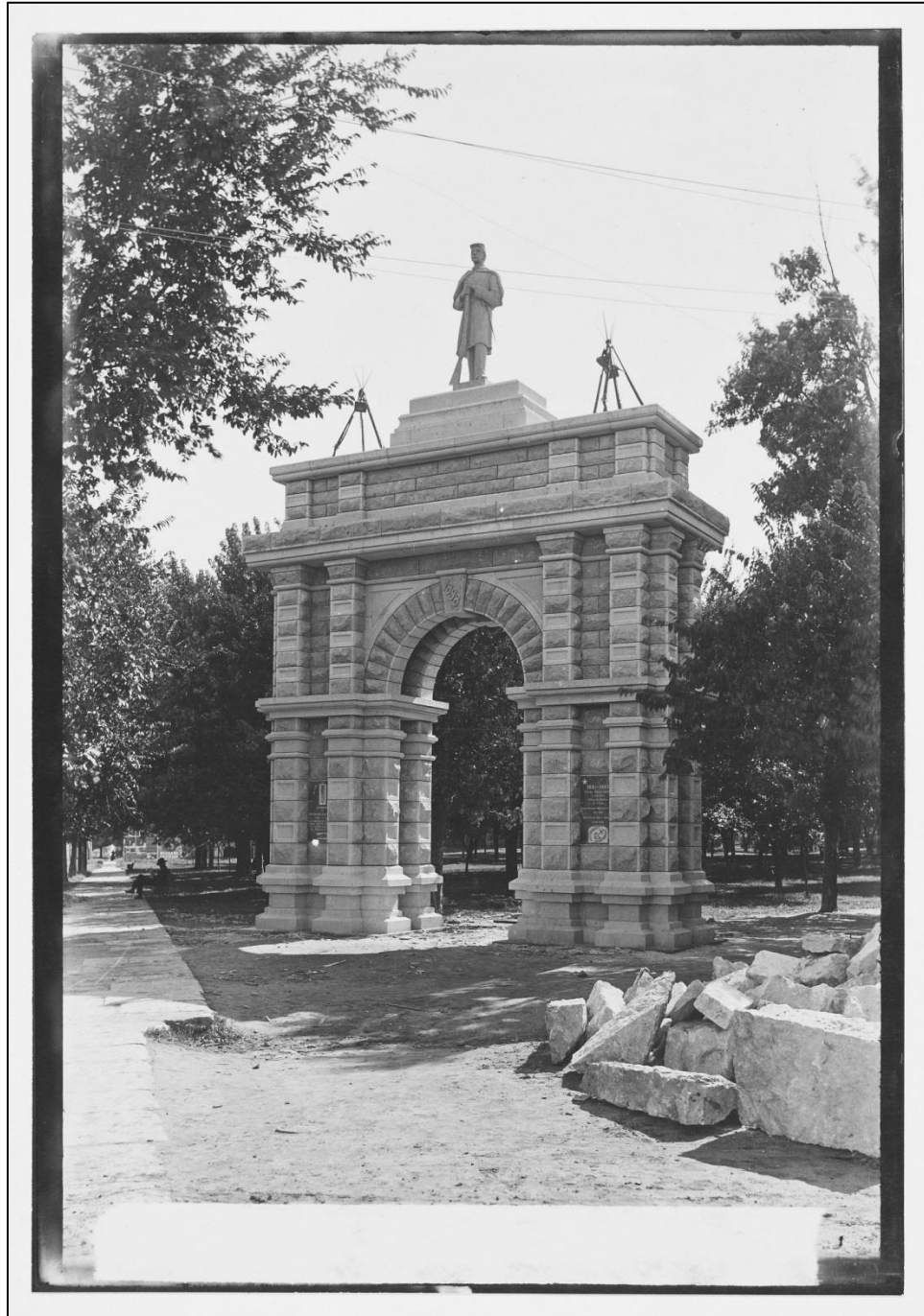
**Figure 3.** August 10, 2016 Aerial of arch at NE corner of park; view is looking southwest.  
Photo by: Rick Dykstra in 2012 for Geary County Convention & Visitors Bureau.



Grand Army of the Republic (GAR) Memorial Arch  
Name of Property

Geary County, Kansas  
County and State

**Figure 4.**  
1898 photo of G.A.R. monument by Joseph J. Pennell



Grand Army of the Republic (GAR) Memorial Arch  
Name of Property

Geary County, Kansas  
County and State

**Figure 5.**

Group of people and automobiles lined up near GAR monument, Junction City. Photo by Joseph J. Pennell, 1908.  
Originally captioned "Lyric Cup Run Nov. 9 and 10, 1908 Junction City Auto Club"

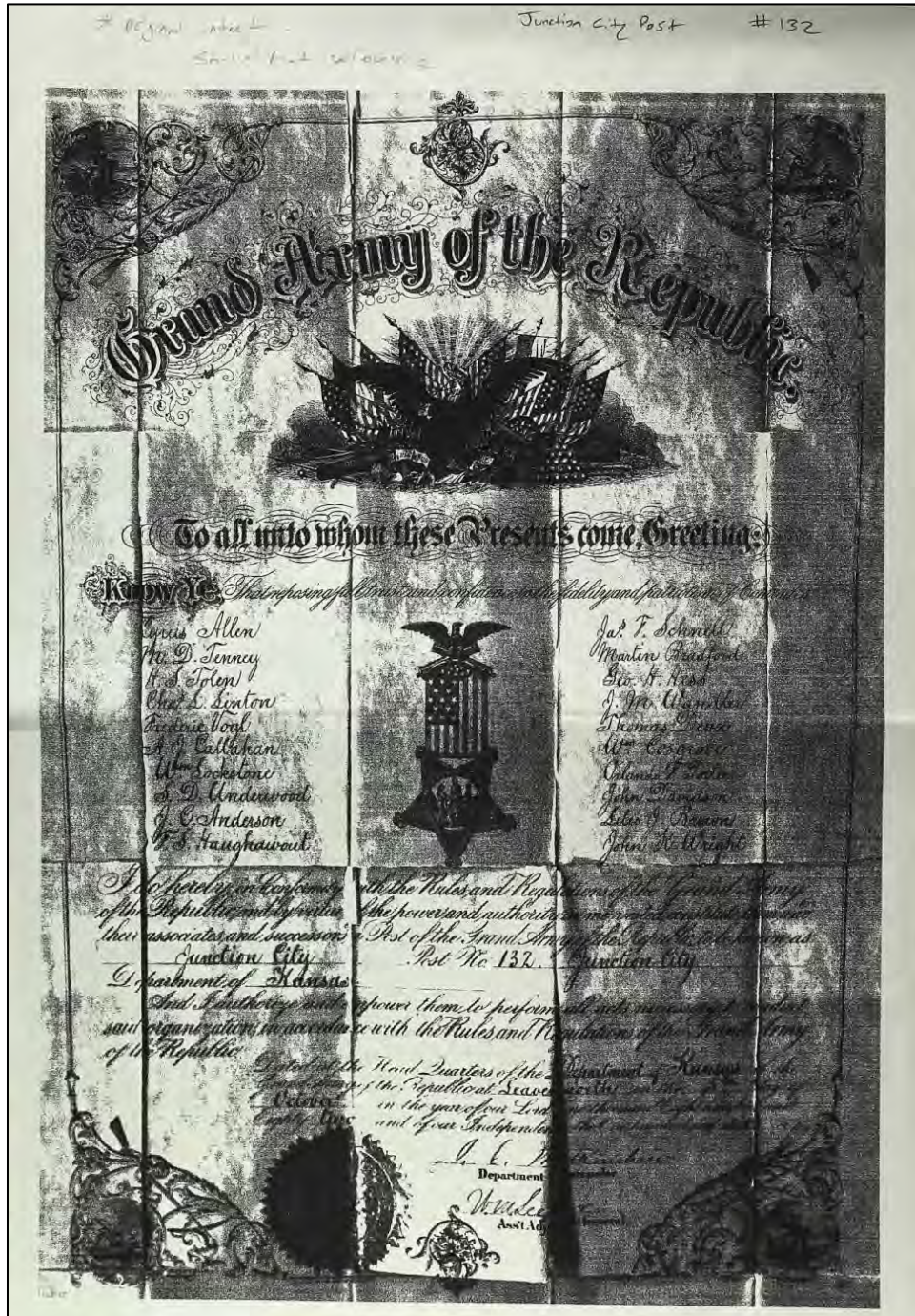




Grand Army of the Republic (GAR) Memorial Arch  
Name of Property

Geary County, Kansas  
County and State

**Figure 6.**  
Founding charter of Post 123, the Junction City chapter of the Grand Army of the Republic, dated October 5, 1882.





Grand Army of the Republic (GAR) Memorial Arch  
Name of Property

Geary County, Kansas  
County and State

Figure 7.

Roster of Post 132 of the Grand Army of the Republic showing the founding members of the Junction City chapter, October 5, 1882.

**Grand Army of the Republic.**

**To all unto whom these Presents Come, Greeting:**  
Know Ye, That reposing full confidence in the fidelity and patriotism of Comrades:

<p><i>Cyrus. Allen</i> <i>M. S. Tenney</i> <i>H. S. Tolson</i> <i>Chas. L. Linton</i> <i>Frederic. Vogt</i> <i>A. J. Callahan</i> <i>Wm. Lockstone</i> <i>S. S. Underwood</i> <i>J. B. Anderson</i> <i>F. S. Haughwaut</i></p>	<p><i>Gas. F. Schnell</i> <i>Martin. Bradford</i> <i>Geo. H. Hess</i> <i>J. M. Waudler</i> <i>Thomas. Sever</i> <i>Wm. Cosgrove</i> <i>Orlando. F. Porter</i> <i>John. Davidson</i> <i>Liles J. Brown</i> <i>John. K. Wright</i></p>
--	--

I do hereby, in conformity with the Rules and Regulations of the Grand Army of the Republic, and by virtue of the power and authority in me vested, constitute them and their associates and successors a Post of the Grand Army of the Republic, to be known as Junction City Post No. 132 Department of Kansas. And I authorize and empower them to perform all acts necessary to conduct said organization in accordance with the Rules and Regulations of the Grand Army of the Republic.

Dated at the Headquarters of the Department of the Grand Army of the Republic at Leavenworth, on the 5<sup>th</sup> day of October in the year of our Lord one thousand eight hundred and Eighty two, and of the Independence the one hundred and Sixth

W. M. Leeper Assistant Adjutant General. J. B. Watkinson Department Commander.

NOTE.—Past Adjutants will please make a full and complete copy of their Post Charter on the above blank and return this to these Headquarters with their new muster roll. Please insert in the proper space all the names contained on your Charter as Charter Members and fill in all the blank spaces with names and dates just as they appear on your Charter.  
The object in securing this information at these Headquarters is to complete our department records.

Grand Army of the Republic (GAR) Memorial Arch  
Name of Property

Geary County, Kansas  
County and State

Figure 8.

First Adjutant's Report and Muster Roll of the Junction City chapter of the G.A.R., Post 132, December 1, 1882.

Form A. [See No. 9]  
Revisions

**ADJUTANT'S REPORT.**

*Junction City*, Post No. *132*  
*new* QUARTER, 1882

Headquarters *Junction City, Mo.*  
Post No. *132* Dep't of *Kansas* G. A. R.  
*December 1, 1882*

Respectfully forwarded,  
*Cyrus Odell*  
Adj. Gen.

P. O. Address, *Junction City, Mo.*

**\*ROSTER OF OFFICERS.**

*\* Report for December 31 in plain names of newly elected officers, but refer to in the field and each quarter.*

P. C. *Cyrus Odell*  
S. V. C. *M. G. Senn*  
J. V. C. *H. G. Tolson*  
Adj. *A. J. Callahan*  
Q. M. *A. J. Callahan*  
Surg. *F. J. Pegg*  
Chap. *J. C. Anderson*  
O. D. *W. G. Lockstone*  
O. G. *W. G. Lockstone*  
S. M. *F. S. Haughwout*  
Q. M. S. *Martin Bradford*

Post Meets every *3 & 4* *Wednesdays*  
in *Macomber* Hall, *South* St.  
*Oppenheimer*

Rec'd A. A. G. O. *Mo.* 18

---

**GAINED During Quarter from Suspended or Dropped.**

No. on Dis. Book.	NAME	Cause.

**LOSSES during Quarter from all Causes.**

No. on Dis. Book.	NAME	Cause.

---

**RECAPITULATION OF MUSTER ROLL.**

Number in good standing last report - - - - -  
1. Gained during Quarter by Muster in - - - - -  
2. Gained during Quarter by Transfer - - - - -  
3. " " " " Reinstatement from Suspended or Dropped - - - - -  
Total Gain - - - - -  
Aggregate - - - - -  
4. Loss during Quarter by Death - - - - -  
5. " " " " Honorable Discharge - - - - -  
6. Loss during Quarter by Transfer - - - - -  
7. " " " " Suspension - - - - -  
8. " " " " Dishonorable Discharge - - - - -  
Total Loss - - - - -  
Number remaining in Good Standing - - - - -

Number remaining suspended on last Report - - - - -  
Number remaining suspended this date - - - - -  
4. "Dropped" during quarter, having been previously suspended - - - - -

Expended for relief during quarter - - - - -  
Number of Members or their families relieved - - - - -  
Other persons relieved - - - - -  
Number of Mittals and Cards on hand - - - - -

1. This number must be fully accounted for on within Muster Roll.  
2. To be reported at bottom of Master Roll, giving Post from which transferred.  
3. To be reported in column opposite, with number of original entry on descriptive book.  
4. To be reported by name in column opposite.

Note.—Comrades "dropped from Rolls" during the quarter, having been previously taken off the number in good standing by being reported "suspended," must be reported by name in column opposite. Comrades having been WORKMEN OF DISABLES, must be reported also on Form F.

**MUSTER ROLL** of Members of *Junction City*, Post No. *132* located at *Junction City*, County of *Lawrence*  
Department of *Kansas* Grand Army of the Republic, mustered or admitted by Transfer DURING THE QUARTER ending the *1st* day of *Dec* 1882

Consecutive No.	No.	NAME	Age.	Birthplace.	RESIDENCE.	OCCUPATION.	ENTRY INTO SERVICE.				FINAL DISCHARGE.			Length of Service, Months.	Cause of Discharge.	
							Date.	Rank.	Co.	Reg't or Ship.	Date.	Rank.	Co.			Reg't or Ship.
1		<i>Cyrus Odell</i>	<i>38</i>	<i>Columbus Mo.</i>	<i>Junction City, Mo.</i>	<i>Carpenter</i>	<i>Aug 6, 61</i>	<i>Pat</i>	<i>C</i>	<i>104 Ohio</i>	<i>May 9, 65</i>	<i>2nd</i>	<i>C</i>	<i>104 Ohio</i>	<i>27, 70</i>	<i>Expulsion being removed</i>
2		<i>M. G. Senn</i>	<i>55</i>	<i>"</i>	<i>"</i>	<i>Mechanic</i>	<i>Jan 15, 62</i>	<i>1st Lt.</i>	<i>"</i>	<i>2 Co. Bat.</i>	<i>"</i>	<i>Capt.</i>	<i>2 Co. Bat.</i>	<i>"</i>	<i>"</i>	
3		<i>H. S. Tolson</i>	<i>40</i>	<i>Birmingham Ala.</i>	<i>"</i>	<i>Merchant</i>	<i>Jan 31, 62</i>	<i>Sgt.</i>	<i>H</i>	<i>2 D. Co.</i>	<i>June 30, 65</i>	<i>Sgt.</i>	<i>H</i>	<i>2 D. Co.</i>	<i>3 yrs</i>	<i>"</i>
4		<i>Abel S. Denton</i>	<i>41</i>	<i>Revere</i>	<i>"</i>	<i>Explosives agent</i>	<i>April 9, 61</i>	<i>Pat.</i>	<i>E</i>	<i>12 Penn</i>	<i>Aug 15, 61</i>	<i>Pat.</i>	<i>E</i>	<i>12 Pa</i>	<i>3 months</i>	<i>"</i>
5		<i>Fredrick Vogt</i>	<i>45</i>	<i>Austria</i>	<i>"</i>	<i>Hay owner</i>	<i>Jan 10, 62</i>	<i>"</i>	<i>E</i>	<i>1st Eng Co.</i>	<i>Jan 6, 65</i>	<i>"</i>	<i>S</i>	<i>US Eng Co.</i>	<i>3 yrs</i>	<i>"</i>
6		<i>A. J. Callahan</i>	<i>45</i>	<i>Revere</i>	<i>"</i>	<i>Iron dealer</i>	<i>Aug 17, 61</i>	<i>"</i>	<i>C</i>	<i>10 Ill</i>	<i>Jan 1, 64</i>	<i>Capt.</i>	<i>C</i>	<i>10 Ill</i>	<i>274</i>	<i>"</i>
7		<i>W. G. Lockstone</i>	<i>39</i>	<i>England</i>	<i>"</i>	<i>Confabanner</i>	<i>" 25, "</i>	<i>"</i>	<i>401</i>	<i>6th Cal</i>	<i>Aug 15, 62</i>	<i>"</i>	<i>1st</i>	<i>Cal. Regt.</i>	<i>7 months</i>	<i>"</i>
8		<i>B. B. Underwood</i>	<i>42</i>	<i>Ohio</i>	<i>"</i>	<i>Atty at Law</i>	<i>Aug 25, 61</i>	<i>"</i>	<i>B</i>	<i>3, B. S. Mo</i>	<i>1st Regt</i>	<i>Capt.</i>	<i>B</i>	<i>F. B. S. Mo</i>	<i>2 years</i>	<i>Expulsion being removed</i>
9		<i>J. C. Anderson</i>	<i>44</i>	<i>Massach</i>	<i>"</i>	<i>Engineer</i>	<i>July 31, 63</i>	<i>2nd Lt.</i>	<i>M</i>	<i>6 Co. Cany</i>	<i>July 8, 65</i>	<i>2nd Lt.</i>	<i>M</i>	<i>6 Co. Can</i>	<i>2 yrs</i>	<i>Expulsion being removed</i>
10		<i>F. S. Haughwout</i>	<i>49</i>	<i>P. A.</i>	<i>"</i>	<i>Tel. Operator</i>	<i>Mar 21, 61</i>	<i>Sgt.</i>	<i>B</i>	<i>16 Wis</i>	<i>Sept. 27, 62</i>	<i>Sgt.</i>	<i>B</i>	<i>16 Wis</i>	<i>Sept 1, 64</i>	<i>Expulsion being removed</i>
11		<i>Geo. H. Schuel</i>	<i>36</i>	<i>P. A.</i>	<i>"</i>	<i>Hold. helper</i>	<i>Feb 15, 64</i>	<i>Pat.</i>	<i>M</i>	<i>7 Pa. Cany</i>	<i>Nov 7, 64</i>	<i>Pat.</i>	<i>M</i>	<i>7 Pa. Can</i>	<i>9 months</i>	<i>Expulsion being removed</i>
12		<i>Martin Bradford</i>	<i>38</i>	<i>"</i>	<i>"</i>	<i>Salvage man</i>	<i>June 6, 61</i>	<i>"</i>	<i>D</i>	<i>1st Ill</i>	<i>July 1, 64</i>	<i>"</i>	<i>G</i>	<i>1st Ill</i>	<i>3 yrs</i>	<i>Expulsion being removed</i>
13		<i>George Hess</i>	<i>45</i>	<i>V. A.</i>	<i>"</i>	<i>Farmer</i>	<i>Aug 6, 62</i>	<i>"</i>	<i>E</i>	<i>77 Ill</i>	<i>Sept 5, 65</i>	<i>Capt.</i>	<i>E</i>	<i>77 Ill</i>	<i>17 months</i>	<i>"</i>
14		<i>J. M. Maxwell</i>	<i>50</i>	<i>Germany</i>	<i>Lyons Creek</i>	<i>"</i>	<i>Oct 7, 61</i>	<i>"</i>	<i>F</i>	<i>6 Co. Cany</i>	<i>Nov 19, 64</i>	<i>Pat.</i>	<i>F</i>	<i>6 Co. Cany</i>	<i>"</i>	<i>"</i>
15		<i>Thomas Duns</i>	<i>39</i>	<i>Ohio</i>	<i>Junction City</i>	<i>Engineer</i>	<i>Aug 10, 61</i>	<i>"</i>	<i>D</i>	<i>5, 3d</i>	<i>Sept 31, 61</i>	<i>"</i>	<i>D</i>	<i>5, 3d</i>	<i>Can 3 yrs</i>	<i>"</i>
16		<i>William Cozome</i>	<i>64</i>	<i>Ill. y.</i>	<i>"</i>	<i>Clerk</i>	<i>Aug 31, 65</i>	<i>"</i>	<i>G</i>	<i>11 Co. Cany</i>	<i>Aug 15, 65</i>	<i>"</i>	<i>G</i>	<i>11 Co. Can</i>	<i>2 yrs</i>	<i>"</i>
17		<i>Olando Photo</i>	<i>52</i>	<i>"</i>	<i>"</i>	<i>Farmer</i>	<i>Aug 18, 61</i>	<i>Sgt.</i>	<i>S</i>	<i>7 Mich</i>	<i>Dec 2, 64</i>	<i>Sgt.</i>	<i>S</i>	<i>7 Mich</i>	<i>3</i>	<i>Expulsion being removed</i>
18		<i>John Lamson</i>	<i>42</i>	<i>Ohio</i>	<i>"</i>	<i>1st Carback</i>	<i>July 16, 61</i>	<i>Pat.</i>	<i>C</i>	<i>6 Wis</i>	<i>Feb 1, 63</i>	<i>Capt.</i>	<i>C</i>	<i>6 Wis</i>	<i>1st</i>	<i>Reinstatement</i>
19		<i>Edw. Brown</i>	<i>43</i>	<i>Ind</i>	<i>"</i>	<i>Farmer</i>	<i>Oct 6, 61</i>	<i>"</i>	<i>E</i>	<i>40 Ind</i>	<i>Nov 2, 64</i>	<i>Sgt.</i>	<i>G</i>	<i>40 Ind</i>	<i>3 yrs</i>	<i>Expulsion being removed</i>
20		<i>John R. Wright</i>	<i>47</i>	<i>"</i>	<i>"</i>	<i>"</i>	<i>June 2, 61</i>	<i>"</i>	<i>F</i>	<i>2 Col</i>	<i>Dec 1, 65</i>	<i>Capt.</i>	<i>B</i>	<i>16 Co. Can</i>	<i>"</i>	<i>Close of the war</i>



Grand Army of the Republic (GAR) Memorial Arch  
Name of Property

Geary County, Kansas  
County and State

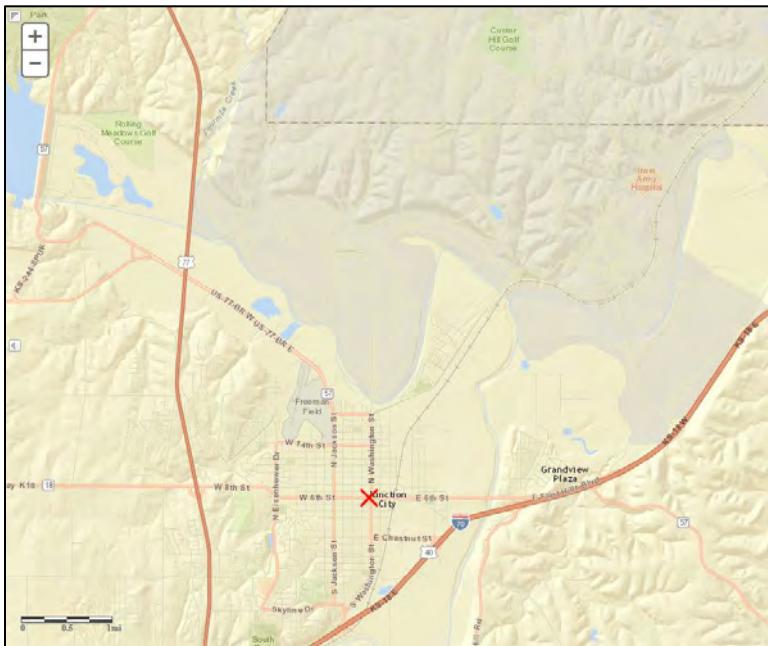
**Figure 9.**  
Official logo of the City of Junction City showing the G.A.R. arch.



Grand Army of the Republic (GAR) Memorial Arch  
Name of Property

Geary County, Kansas  
County and State

**Boundary Map.**



**Contextual Map.** X marks location of Arch.











1898







TRUST

IN GOD

THE SOLDIERS OF THE ARMY OF THE UNITED STATES  
WHO WERE KILLED IN ACTION  
DURING THE GREAT WAR  
1914-1918



1807-1866

TRUSTEES (STMENT)

Disch...

Diary...











UNITED STATES DEPARTMENT OF THE INTERIOR  
NATIONAL PARK SERVICE

NATIONAL REGISTER OF HISTORIC PLACES  
EVALUATION/RETURN SHEET

Requested Action:

Property Name:

Multiple Name:

State & County:

Date Received: 12/2/2016      Date of Pending List: 12/27/2016      Date of 16th Day: 1/11/2017      Date of 45th Day: 1/17/2017      Date of Weekly List: 1/17/2017

Reference number:

Nominator:

Reason For Review:

- |   |  |   |
|---|--|---|
| <input type="checkbox"/> Appeal           | <input type="checkbox"/> PDIL            | <input type="checkbox"/> Text/Data Issue    |
| <input type="checkbox"/> SHPO Request     | <input type="checkbox"/> Landscape       | <input type="checkbox"/> Photo              |
| <input type="checkbox"/> Waiver           | <input type="checkbox"/> National        | <input type="checkbox"/> Map/Boundary       |
| <input type="checkbox"/> Resubmission     | <input type="checkbox"/> Mobile Resource | <input type="checkbox"/> Period             |
| <input checked="" type="checkbox"/> Other | <input type="checkbox"/> TCP             | <input type="checkbox"/> Less than 50 years |
|   | <input type="checkbox"/> CLG             |   |

Accept       Return       Reject      1/11/2017 Date

Abstract/Summary Comments:

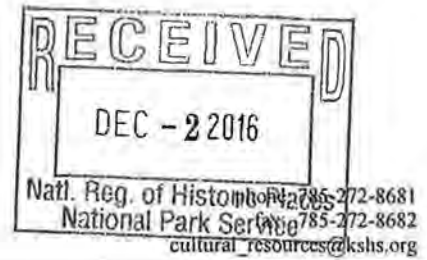
Recommendation/ Criteria:

Reviewer Alexis Abernathy      Discipline Historian

Telephone (202)354-2236      Date \_\_\_\_\_

DOCUMENTATION:    see attached comments : No    see attached SLR : No

If a nomination is returned to the nomination authority, the nomination is no longer under consideration by the National Park Service.



6425 SW 6th Avenue  
Topeka KS 66615

Sam Brownback, Governor  
Jennie Chinn, Executive Director

November 21, 2016

Paul Loether, National Register Chief  
National Register of Historic Places  
National Park Service  
1201 Eye Street, NW (2280)  
Washington, DC 20005

Re: National Register documents

Dear Mr. Loether:

Please find enclosed the following National Register documents:

- **Arvonja Township Hall, Lebo vicinity, Osage County, Kansas (new nomination)**
  - Physical, signed copy of the nomination's first page;
  - 1 CD (disk #1) with a PDF of the true and correct copy of the nomination;
  - 1 CD (disk #2) with photographs
  
- **Leonard, J.T., & Anna, House; Girard, Crawford County, Kansas (new nomination)**
  - Physical, signed copy of the nomination's first page;
  - 1 CD (disk #1) with a PDF of the true and correct copy of the nomination and .kmz file;
  - 1 CD (disk #2) with photographs
  
- **Eskridge City Park & Bandstand, Eskridge, Wabaunsee County, Kansas (resubmission)**
  - Physical, signed copy of the nomination's first page;
  - 1 CD (disk #1) with a PDF of the true and correct copy of the nomination, copy of city (owner) support, copy of letter from Alexis Abernathy recommending a resubmission and .kmz file;
  - 1 CD (disk #2) with photographs
  
- **Olathe Cemetery, Olathe, Johnson County, Kansas (new nomination)**
  - Physical, signed copy of the nomination's first page;
  - 1 CD (disk #1) with a PDF of the true and correct copy of the nomination and .kmz file;
  - 1 CD (disk #2) with photographs
  
- **Engle, Jacob S., House, Abilene, Dickinson County, Kansas (new nomination)**
  - Physical, signed copy of the nomination's first page;
  - 1 CD (disk #1) with a PDF of the true and correct copy of the nomination, copies of letters of support from the city of Abilene (2)
  - 1 CD (disk #2) with photographs

- **Hoffman & Lamb Buildings, Enterprise, Dickinson County, Kansas (new nomination)**
  - Physical, signed copy of the nomination's first page;
  - 1 CD (disk #1) with a PDF of the true and correct copy of the nomination;
  - 1 CD (disk #2) with photographs
  
- **Lander's Wagon & Carriage Shop, Humboldt, Allen County, Kansas (new nomination)**
  - Physical, signed copy of the nomination's first page;
  - 1 CD (disk #1) with a PDF of the true and correct copy of the nomination;
  - 1 CD (disk #2) with photographs
  
- **Grand Army of the Republic (GAR) Memorial Arch, Junction City, Geary County, Kansas (new nomination)**
  - Physical, signed copy of the nomination's first page;
  - 1 CD (disk #1) with a PDF of the true and correct copy of the nomination;
  - 1 CD (disk #2) with photographs
  
- **Reid, Lyman, House; Ottawa, Franklin County, Kansas (new nomination)**
  - Physical, signed copy of the nomination's first page;
  - 1 CD (disk #1) with a PDF of the true and correct copy of the nomination;
  - 1 CD (disk #2) with photographs
  
- **Kansas Route 66 Historic District – North Baxter Springs; Riverton & Baxter Springs vicinities, Cherokee County, Kansas (boundary expansion; additional documentation)**
  - Physical, signed copy of the nomination's first page;
  - 1 CD (disk #1) with a PDF of the true and correct copy of the nomination and .kmz file;
  - 1 CD (disk #2) with photographs
  
- **Beckett, Charles K., House, Sterling, Rice County, Kansas (removal request)**
  - Physical, signed copy of the removal request;
  - 1 CD (disk #1) with a PDF of the true and correct copy of the removal request;
  - 1 CD (disk #2) with photograph
  
- **Spring Creek School, Corbin vicinity, Sumner County, Kansas (removal request)**
  - Physical, signed copy of the removal request's first page;
  - 1 CD (disk #1) with a PDF of the true and correct copy of the removal request;
  - 1 CD (disk #2) with photographs

If you have any questions about these enclosed items, please contact me at 785-272-8681 ext. 216 or [aloughlin@kshs.org](mailto:aloughlin@kshs.org).

Sincerely,



Amanda K. Loughlin  
National Register Coordinator

Enclosures