

ARCHITECTURAL/HISTORICAL SURVEY

DAVENPORT, IOWA

The Architects Office

Wehner, Nowysz, Pottschiull and Pfiffner
207 day building, Iowa city, Iowa 52240

DAVENPORT COMMUNITY DEVELOPMENT DEPARTMENT
IOWA DIVISION OF HISTORIC PRESERVATION

SITE #82-10- 2-W131 MAP # 1

HIST. DIST. _____

NAME J.H.C. Petersen's Sons Store (H) C

(Petersen-Harned-Von Maur)

ADDRESS 123-131 & 129 West Second Street (D.M.R.F.)

W40' of lot 9

LEGAL DES. LeClaire's 1st Add. 41 & all of lot 10

SUB-DIVISION

BLOCK

PARCEL

SUB-PARCEL

UTM | 15 | 71021330 | 45992410 | ACREAGE -1 | ZONE C-4

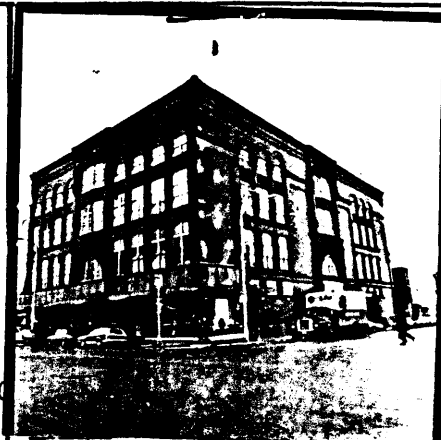
EASTING

NORTHING

OWNER Henry F. Petersen Investment Corp.

131 W. Second St., Davenport, IA 52801

TITLE H. _____
(IF DIFF) _____



MAP

(See continuation sheet)

DESCRIPTION

FORM 3 story retail block, nearly square in plan. CONST. DATE 1892

MATERIALS Brick, terra cotta; Interior: Iron col. & wood ARCH beams. STYLE Commercial Romanesque

FENESTRATION Vertical grouping within round arch pilastrade

DIST. FEATURES See below

ALTERATIONS Window sash replaced, round-arched windows removed from frontispieces, ...*

SITE & RELATED STR. Corner location in Central Business District. *continued below*

STATEMENT F.G. Clausen, Architect

The Petersen's Sons Store is an important local example of the late 19th century development of the "department store" built for the city's leading retail firm. Clearly modelled on Burnham & Root's Rookery Building (1887-6), it illustrates the impact of Chicago architecture on local designers and businessmen. Although on a smaller scale than the Rookery, the Petersen's Block repeats many features of the earlier building, including the slightly projecting entrance frontispieces that contain shallow projecting window bays and culminate in elaborate parapets with bulky finials. Other features include the vertical grouping of windows in round-arched arcades and diaperwork spandrels between windows. Detailing is simpler in the Petersen Block. For instance, the brick cornice is fairly traditional and spandrels above the 3rd floor arches are plain, rather than textured as on the Rookery. Despite some alterations, the Petersen Block is largely intact. It is an important feature in the downtown cityscape and an interesting & successful adaptation of Burnham & Root's design to local circumstances.

SOURCES

Oszuscik, P. 255

HABS Inventory Form, 1972. Iowa Division of Historic Preservation.

Alterations - cont'd

* tympana at 3rd floor filled-in with diaperwork; modern shop canopy, shop windows

SITE SHEET

ARCHITECTURE

ICANCE

This building focuses attention on the single most important retail and wholesale commercial firm in Davenport after the Civil War. It illustrates the growth pattern of numerous dry goods firms from specialty/proprietor establishments to department store/companys.

DESCRIPTION

John H.C. Petersen came to the U.S. in 1860 and after several years in various lines of business, including farming and a match-factory, he began with his sons a dry goods firm in 1872. By 1875, Petersen was handling both wholesale and retail lines of Chicago merchandise. In the 1880's, branch stores were added in Clinton and Geneseo, Illinois.

In 1892, the firm built a new downtown structure and operated under the name J.H.C. Petersen and Sons. The store was designed according to the newest marketing principles of the day with specialized departments under one roof. The three Petersen sons - Max, Henry F. and William - took over the operation at this time. Several years later a large warehouse was added. The business continued both retail and wholesale operations.

... continued next page

SOURCES

Richter, August, "A True History of Scott County" Davenport Democrat, October 29, 1922.

"Matches to Merchandising is Petersen's Story", "Centennial and Fiftieth Anniversary Edition", Davenport Times, July 11, 1936.

"Petersen's", Davenport Democrat, April 30, 1947.

Downer, Harry, History of Davenport and Scott Co. Iowa, Chicago: Clarke Publishing Co, 1910

ARCHITECTURAL HISTORIAN: Marty Bowers

HISTORIAN: MARLYS SVENDSEN ROESLER

SURVEY COMP 1981

EVALUATION

ARCHITECTURAL

I. ARCH EVALUATION Excellent
II. ENVIR. STATURE Focus
III. INT. OF CONTEXT Fair
IV. INT. OF FABRIC Good

LEVEL OF SIGNIFICANCE:

NAT. STATE LOCAL N. ELIG.

HISTORICAL

I. THEME(S) OF SIGNIFICANCE:

A. PRIMARY Commerce
B. SECONDARY Dry Goods

II. LEVEL OF SIGNIFICANCE:

NAT. STATE LOCAL

III. N.R.H.P.

ELIGIBLE NOT ELIGIBLE

HISTORIC DISTRICT CLASSIFICATION

FOR DIVISION OF HISTORIC PRESERVATION USE ONLY

1. DATE RECEIVED _____

2. DATE OF STAFF EVALUATION _____

A. ARCHITECTURAL B. HISTORICAL
ELIGIBLE FOR N.R.H.P.
NOT ELIGIBLE FOR N.R.H.P.

3. N.R.H.P. ACTION

A. STATE REVIEW COMM. APP. DISAPP. TABLED DATE _____
B. FEDERAL REVIEW APP. DISAPP. TABLED DATE _____

4. D.H.P. SOURCES

COUNTY RESOURCES
 W'SHIELD SURVEY
 NRHP
 GRANT _____

DET. OF ELIGIBILITY
 R. & C. _____
 DAVENPORT A/H SURVEY

5. SUBJECT TRACES

6. PHOTO
1605-12
1629-3

The Architects Office

Wehner, Nowysz, Pottschiull and Pfiffner

801 day building, Iowa city Iowa 50240

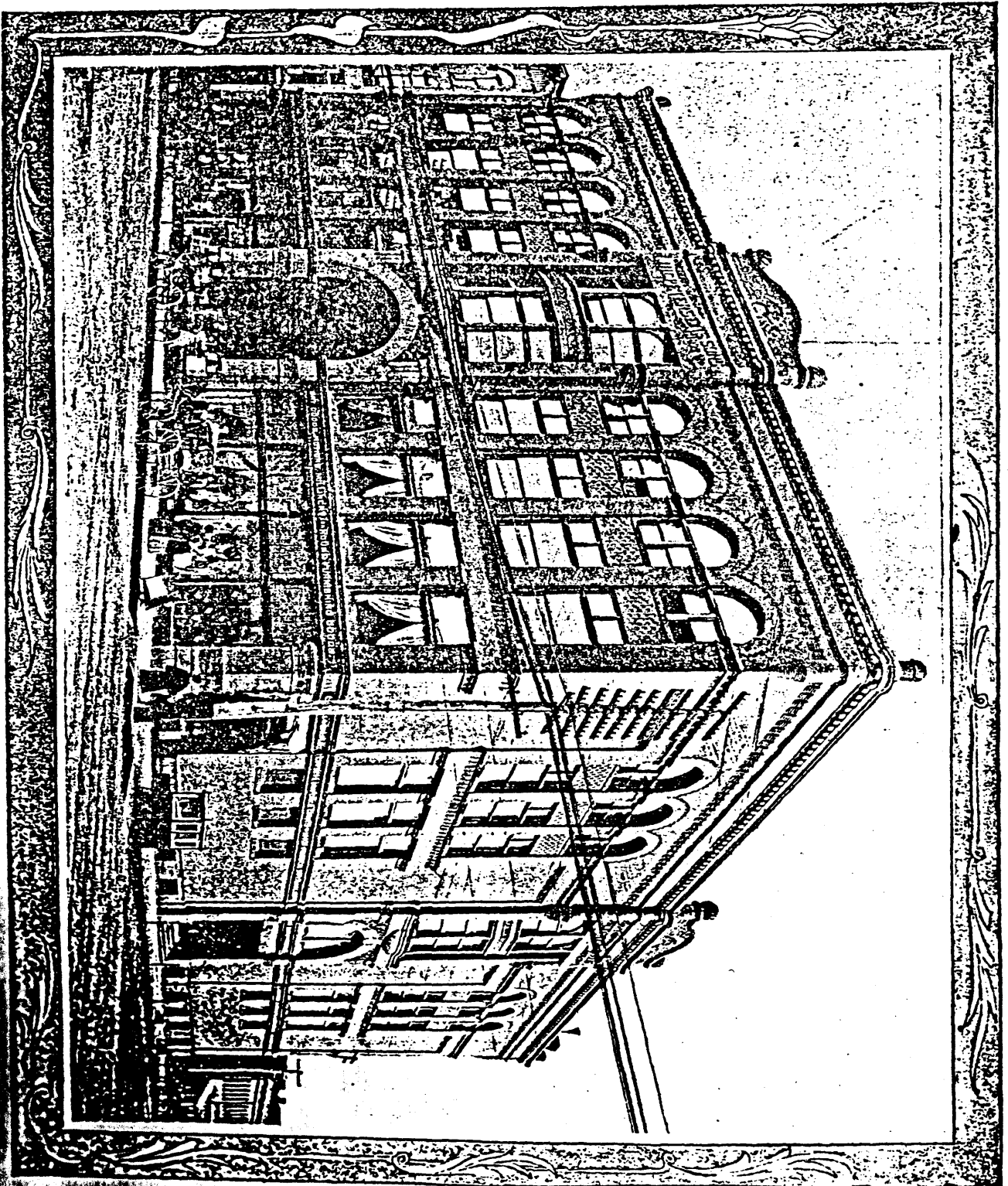
DAVENPORT COMMUNITY DEVELOPMENT DEPARTMENT
IOWA DIVISION OF HISTORIC PRESERVATION

* 82 - 10 - 2-W131

DESCRIPTION- continued:

During the 1880's and 90's several competitors established Davenport operations. After the deaths of J.H.C. in 1910, Max in 1915 and Henry in 1915, William decided to sell the department store in 1916 to one of their successful competitors - Harned and Von Maur Co. Petersen's was operated as a separate store until 1928 when the consolidation resulted in the "Petersen-Harned-Von Maur" Store quartered in the old Petersen's building. This department store continues today in Davenport and a handful of other Iowa-Illinois communities.

CONTINUATION

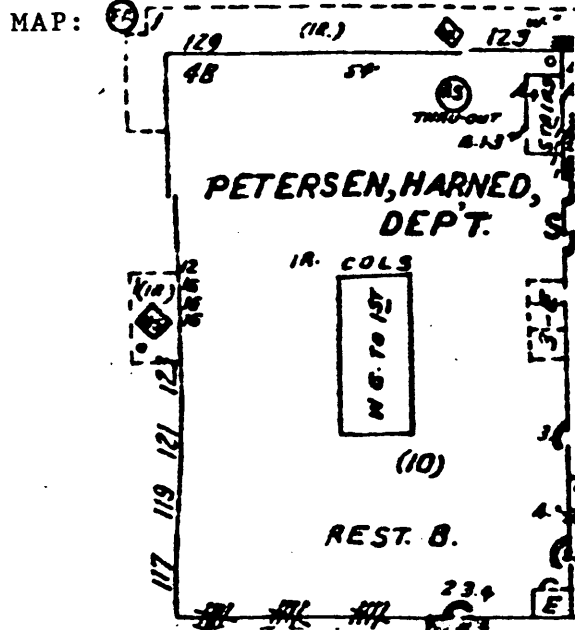


J. H. C. Peterson's Sons, Department Store, Davenport.

The Architects Office
Wehner, Nowysz, Pottschiull and Pfiffner
201 dev building, iowa city, iowa 52240

DAVENPORT COMMUNITY DEVELOPMENT DEPARTMENT
IOWA DIVISION OF HISTORIC PRESERVATION

82-10- W2-131



CONTINUATION

ADDITIONAL PHOTOGRAPH:

