


Casa Colina **INDUSTRIES**

Second



POMONA EDISON DISTRICT

No 1 of 19 

Building Nos. 1 and 2: 501, 541 W. Second St.

Pomona, CA Los Angeles County

Taken: September 1985

Photographer: D. Marsh

Negatives: 321 N. Philadelphia, Anaheim, CA

Front view of bldgs. from south



1916

1916

POMONA EDISON DISTRICT

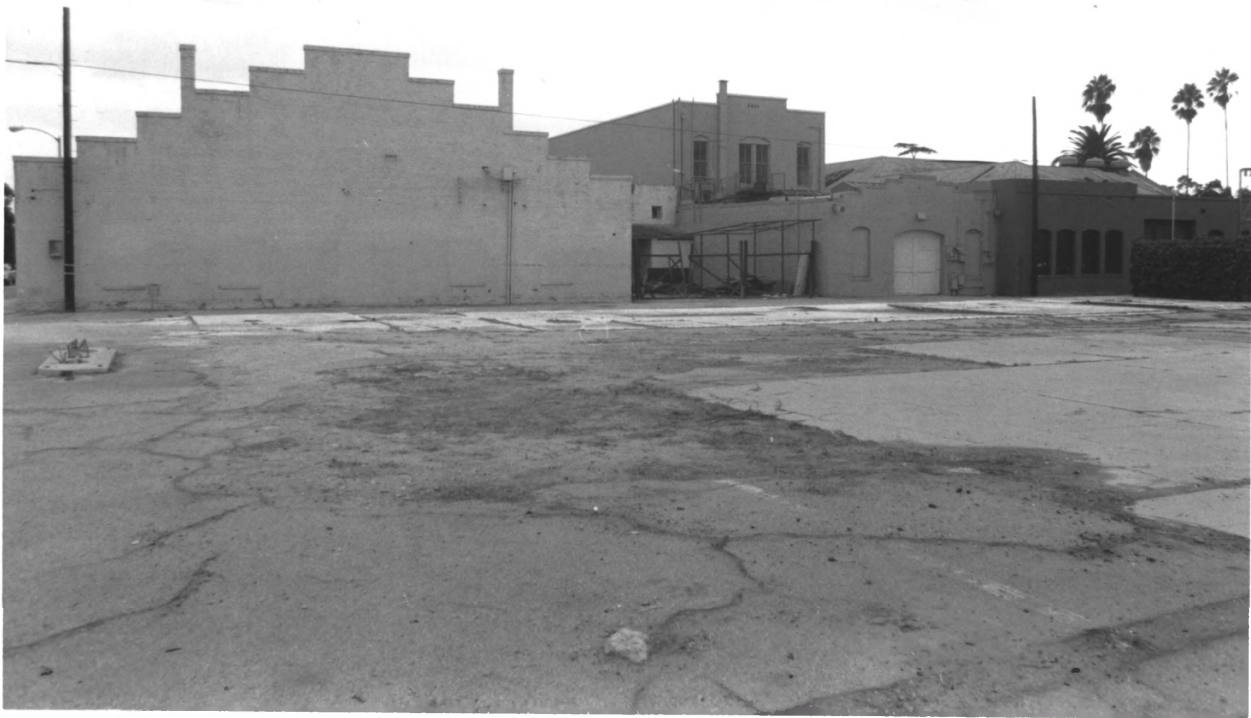
No 2 of 19

Building No. 1 and 4: 501 and 502 W. Second
Pomona, CA Los Angeles County

Taken: September 1985

Photographer: D. Marsh

Negatives: 321 N. Philadelphia, Anaheim, CA
Rear of No. 1 from NE with No. 4 to left



POMONA EDISON DISTRICT

No 3 of 19

Buildings 4 and 5 502-528 W. Second St.

Pomona, CA Los Angeles County

Taken: September 1985

Photographer: D. Marsh

Negatives: 321 N. Philadelphia, Anaheim, CA

Front of bldgs. No. 4 and 5 from NE



No. 4 OF 19

POMONA EDISON DISTRICT

Buildings 2, ~~10~~¹⁰, ~~3~~³ 501-595 W. Second St.

Pomona, CA Los Angeles County

Taken: September 1985

Photographer: D. Marsh

Negatives: 321 N. Philadelphia, Anaheim, CA

Buildings, 2, ~~10~~¹⁰, ~~3~~³ from SE



IMPERIAL
DESIGNS

FURNITURE MANUFACTURING INC.
IMPERIAL DESIGNS

565

POMONA EDISON DISTRICT

No. 5 05 19

Building No 3: 565-595 w. Second St.

Pomona, CA Los Angeles County

Taken: September 1985

Photographer: D. Marsh

Negatives: 321 N. Philadelphia, Anaheim, CA

Building No 3 from SW



IMPERIAL
DESIGNS

POMONA EDISON DISTRICT

NO. 6 OF 19

Building No. 3: 565-595 W. Second St.

Pomona, Ca Los Angeles County

Taken: September 1985

Photographer: D. Marsh

Negatives: 321 N. Philadelphia, Anaheim, CA

Building No. 3 from west side

NEW TYPE TUBES
RADIO

SURPLUS SERVICE SUPPLIES
RADIO

NEW SURPLUS

RADIO
&
TV
PARTS



KITRON
RADIO

Panasonic

CA

518

ELECTRONIC
OUTLET



POMONA EDISON DISTRICT

NO 7 OF 19

Building No. 4: 502-516 W. Second St.

Pomona, CA Los Angeles County

Taken: September 1985

Photographer: D. Marsh

Negatives: 321 N. Philadelphia, Anaheim, Ca

Rear of bldg. No. 4 from SW



SURPLUS SERVICE SUPPLIES
RADIO

SURPLUS SERVICE SUPPLIES
RADIO

NEW
SURPLUSES

TV
PARTS

KITRON
RADIO

KITRON
RADIO

PARKING
←

No 8 OF 19

POMONA EDISON DISTRICT

Building Nos. 4 and 5, 502-528 West Second St.

Pomona, CA Los Angeles County

Taken: September 1985

Photographer: D. Marsh

Negatives: 321 N. Philadelphia, Anaheim, CA

Front and east side of bldg. from NE



No 9 OF 19

POMONA EDISON DISTRICT

Building No. 4 and 5: 502-528 W. Second St.

Pomona, CA Los Angeles County

Taken: September 1985

Photographer: D. Marsh

Negatives: 321 N. Philadelphia, Anaheim, CA

Buildings No. 4 and 5 from NE



516

CA

ELECTRONIX
OUTLET

POOL

Coca-Cola

MARSHALL PLACE S

PEPSI-COLA

POMONA EDISON DISTRICT No. 10 OF 19

Buildings⁴ and⁵: 502-528 W. Second St.

Pomona, CA Los Angeles County

Taken: September 1985

Photographer: D. Marsh

Negatives: 321 N. Philadelphia, Anaheim, CA
buildings⁴ and⁵ from NW



POMONA EDISON DISTRICT

No 11 OF 19 ■

Building No. 1: 501 West Second St.

Pomona, CA Los Angeles County


Taken: September 1985

Photographer: D. Marsh

Negatives: 321 N. Philadelphia, Anaheim, CA

Rear of bldg. from northeast.



POMONA EDISON DISTRICT NO 12 OF 19 
Buildings No, ⁴●, ⁶●, ⁷●: 502-590 W. Second St.
Pomona, CA Los Angeles County
Taken: September 1985
Photographer: D. Marsh
Negatives: 321 N. Philadelphia, Anaheim, CA
Alley behind bldgs on s. side, from SE.

- REFRIGERATORS
- FREEZERS
- STOVES
- WASHERS DRYERS

Tates USED FURNITURE

Buy • Sell • Trade
621-614

USED
FURNITURE

USED
FURNITURE

EQUILY
ASHERS

Furniture
FOR SALE

OVER



NO 13 OF 19

POMONA EDISON DISTRICT

Building No. 70: 500 W. Second St.

Pomona, CA Los Angeles County

Taken: September 1985


Photographer: D. Marsh

Negatives: 321 No. Philadelphia, Anaheim, Ca

Building No. 70 from NE



POMONA EDISON DISTRICT

NO 14 0 F/19 

Buildings No. 4, 5, 6, 7, 8, South side W. Second
Pomona, CA Los Angeles County

Taken: September 1985

Photographer: D. Marsh

Negatives: 321 N. Philadelphia, Anaheim, Ca
South side of street from NW



POMONA EDISON DISTRICT NO. 15 OF 19

Building No 8: 637 W. Second St.

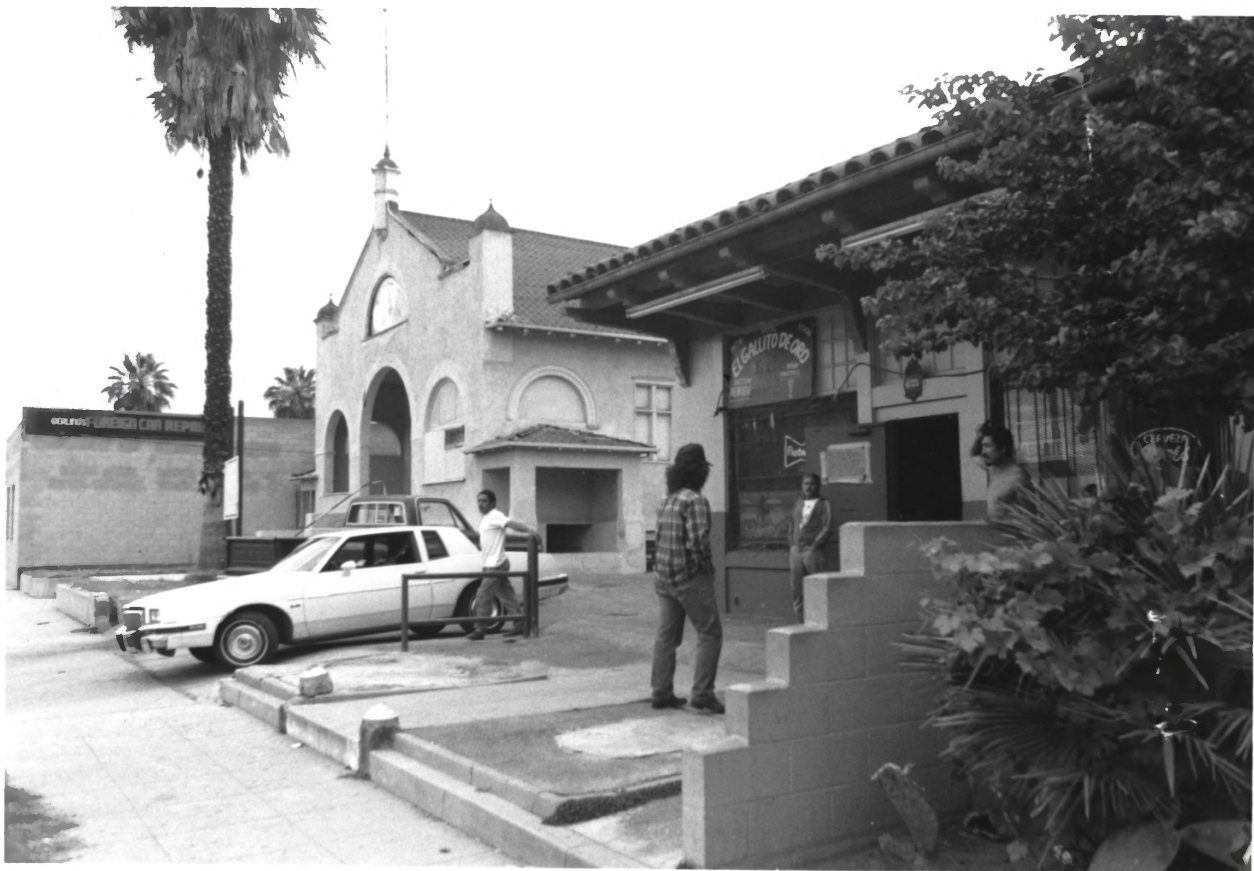
Pomona, Ca Los Angeles County

Taken: September 1985

Photographer: D.Marsh

Negatives: 321 N. Philadelphia, Anaheim, Ca

Armory building (No. 8) from SE



POMONA EDISON DISTRICT

NO 16 OF 19

Building No.s 8 and 9, 611, 637 W. Second

Pomona, CA Los Angeles County

Taken: September 1985

Photographer: D. Marsh

Negatives: 321 N. Philadelphia, Anaheim, CA

Armory No. 8, and No. 9 from SE



POMONA EDISON DISTRICT No 17 OF 19

Building No. 637 W. Second St.

Pomona, CA Los Angeles County

Taken: September 1985

Photographer: D. Marsh

Negatives: 321 N. Philadelphia, Anaheim, Ca

Armory Building (No. 8) from NE



EDISON HISTORIC DISTRICT, POMONA *18 of 19*

Building No. 9 (611 West Second St.)

Pomona, CA Los Angeles County

Taken: September 1985

Photographer: D. Marsh

Negatives: 321 N. Philadelphia
Anaheim, CA 92805

Southern California Auto Club building with
addition on right. Addition runs parallel
to east side of auto club building.



AUTO CLUB

ADDITION

EDISON HISTORIC DISTRICT, POMONA 19 of 19

Building No. 9 (b11 West Second St.)

Pomona, CA Los Angeles County

Taken: September 1985

Photographer: D. Marsh

Negatives: 321 N. Philadelphia
Anaheim, CA 92805

Southern California Auto Club building and
addition, taken from southeast. Addition is
on right with Auto Club building in center
and Armory Building (No. 8) on left.