



9/869
g

Pete's Photos
Geraldine, Mont. 5944

SEP 11 1980

LONETREE

Near Geraldine, MT

Chouteau County

Historic photograph of Lonetree,
dated between 1905-1913.

Note:, Weather station apparatus
on the extreme right

Photographer unknown

JUL 1

#1/9

1980



LONETREE

92579
28

Pete's Photos
Geraldine, Mont. 59446

LONETREE

Near Geraldine, MT

Chouteau County

Front facade of Main House at
Lonetree

1979

JUL 1

1980

SEP 11 1980

#2/19



92579
24

Pete's Photos
Geraldine, Mont. 59446

LONETREE

Near Geraldine, MT
Chouteau County

#3/a

Rear view of Lonetree Main
House

1979

JUL 1 1980

SEP 11 1980



2 ROOM STONE CABIN

SEP 11 1980

#4

17

) AND SOUTH EXPOSURE

LONETREE

Near Geraldine, MT

Chouteau County

Two room stone Cabin SW view

Photo & Neg: John Lepley

Fort Benton, MT

1980

JUL 1 1980



LONETREE

SEP 11 1980

Near Geraldine, MT

Chouteau County

Stone building covering the spring)

Photo & Neg: John Lepley

Fort Benton MT

1980

JUL 1 1980

#5
19 '6



LONETREE

Near Geraldine, MT

Chouteau County

Dugout, east facade

Photo & Neg: John Lepley

Fort Benton

1980

JUL 1 1980

SEP 1 1 1980

#6
/ 9



92579
37

Pete's
Geraldine

LONETREE

Near Geraldine, Mt
Chouteau County

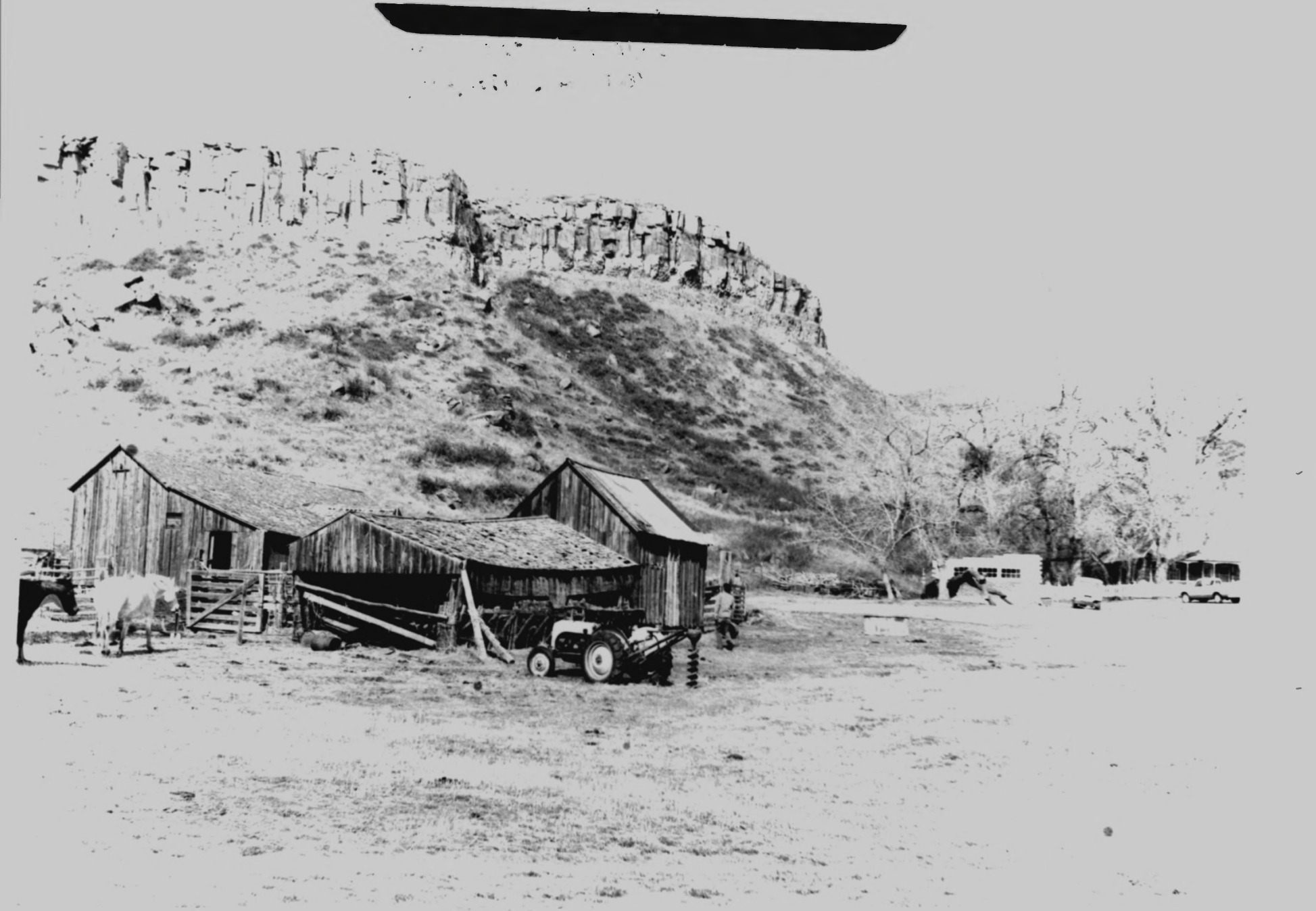
Barn: Looking north

Photo. and Neg: Pete's Photos
Geraldine, MT

1979 SEP 11 1980

JUL 1 1980

#7 / of



LONETREE

Near Geraldine, MT

Chouteau County

Barn and 2 feed sheds with corral

Photo & Neg: John Lepley

Fort Benton, MT

1980

SEP 11 1980 #8/97

W

JUL 1 1980



SEP 11 1980

#9/94

CORRAL

LONETREE

Near Geraldine, MT

JUL 1 1980

Chouteau County

Barn, Feed sheds and Corral

Looking South out of canyon

Photo & Neg: John Lepley

1980

Fort Benton.