

HISTORIC RESOURCES OF GAINESVILLE
SUMTER COUNTY, ALABAMA

Name: Gainesville Historic District

Location: Bordered roughly on the North by Carolina Street, on the East by Lafayette Street, on the West by Webster Street, and to the South by the ending of the original town grid of Gainesville.

Acreage: Approximately 76 acres

Verbal Boundary Description: See attached map.

UTM: A. 16/391740/3631660	F. 16/391420/3630640
B. 16/391770/3631620	G. 16/391280/3631360
C. 16/391830/3631009	H. 16/391320/3631580
D. 16/391820/3631000	I. 16/391520/3631700
E. 16/391580/3630680	

Description:

The Gainesville Historic District is located south of the Tombigbee River in the original town grid of Gainesville as plotted in 1832. The district is bordered roughly on the north by Carolina Street, which is partially opened to traffic, on the east by Lafayette Street, which is no longer open, on the west by Webster Street and to the south by the ending of the original town grid. The original antebellum grid pattern is still clearly visible through the street patterns, vistas and relationships between buildings. Many of the streets, which are now grassy thoroughfares, are no longer open to traffic; however, these are maintained by the municipality. The district constitutes the largest concentration of intact buildings dating from the heyday of the town that are located in the original town plan. There are twenty-three or 70% contributing buildings, 10 or 30% non-contributing buildings. The contributing buildings range in style from the Federal Period (Stein-Garth House #9), Greek Revival (Mobley House - National Register - #11, the Travis-Derryberry-Harwood House #28, Aduston Hall #33), Vernacular with Greek Revival elements (Meeks-Mitchell-Norwood House #32, the Ellis-Waddell House #24), Carpenter Gothic (St. Albans Episcopal Church #29), and Italianate (Allison-McLelland House #21) and other simple buildings with no pretense at style. All of the contributing buildings within the district are of wood frame construction.

The buildings which do not contribute to the character of the district are modern (post 1960) residences of either brick or frame construction, along with one post 1960 brick church building.

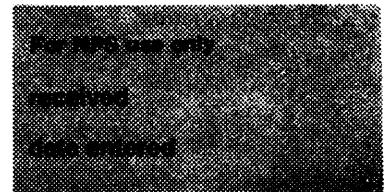
Statement of Significance:

Criterion C - Architecture:

The Gainesville Historic District is significant for the numerous architectural styles displayed by the remaining buildings of this once thriving river port. The buildings inside the district boundaries constitute the largest concentration of surviving residences and churches from the town's heyday that are found within the original town plan. The twenty-three buildings that contribute to the character of the district exhibit Federal Period, Greek Revival, Vernacular with Greek Revival elements, Carpenter Gothic and Italianate styles.

**United States Department of the Interior
National Park Service**

**National Register of Historic Places
Inventory—Nomination Form**



Continuation sheet

Item number 7

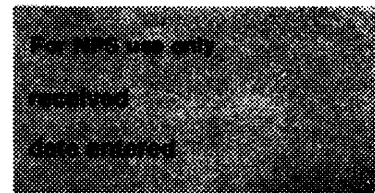
Page 1

GAINESVILLE HISTORIC DISTRICT - CONTRIBUTING STRUCTURES:

- 1) Gainesville Presbyterian Church (West side of McKee Street facing North) 1837-38, transitional (Greek Revival exterior with Federal-style interior woodwork); 1-story, clapboard, rectangular (three-bay front) with pedimented and pilastered facade, two-stage louvered belfry, four-part sash windows covered by louvered blinds; auditorium interior with vestibule, two circles with three blocks of original paneled box pews (gates removed and stored), raised pulpit dais backed by Tuscan pilastrade; U-shaped gallery at sides and rear supported by Tuscan colonnettes, original whale oil lamps; ca. 1890 reed organ. Virtually unaltered except for removal of finials and raked parapet which once capped belfry.
- 2) Schiffman-Syring House (SW corner Carolina and Sanders Streets) c. 1840; Greek Revival detail; 1½ story, clapboard, three-bay front, gable roof, originally central pedimented Doric portico, frieze or "eyebrow" windows at upper story within fretted frieze; center-hall plan; full length porch replaced portico in late 19th century, all constructed; 19th century picket fence.
- 3) House (West side of Church Street between Carolina and Pearl Streets); 1-story, frame, rectangular, gable roof, shed front porch.
- 4) House (West side of Church Street between Carolina and Pearl Streets); 1-story, frame, rectangular, two-room plan, hipped roof, shed porch.
- 5) House (West side of Church Street between Carolina and Pearl Streets); 1-story, gable roof, shed porch.
- 9) Stein-Garth House (NW corner Webster and Pearl Streets) c. 1835; Federal; 2-story, frame, rectangular (5-bay front), hipped roof, end chimneys, 9/9 sashing; center-hall plan; original central two-tiered portico replaced by one-story porch with deck early 20th century; also 20th century shed extension across rear.
- 10) Ellis-Waddell House (SW corner Webster and Pearl Streets) c. 1835-40; 2-story, frame, square, 4-bay front, gable roof, two tiered pedimented porch with simple neoclassical proportions, square wooden columns, 9/6 sashing; two-room plan with connecting interior doors; little altered and significant element of district, c. 1920 one-story rear kitchen addition (semi-detached).
- 11) Green G. Mobley House (The Magnolia) (SE corner Webster and Pearl Streets); c. 1845; Greek Revival; 2-story with large one-story rear wing, frame, rectangular (5-bay front), gable roof (pedimented gable ends), denticulated cornice, colossal order four-bay pedimented tetrastyle portico. Garden enclosed by c. 1850 6' high brick wall; grounds occupy entire block. Largest extant Greek Revival residence in Gainesville (National Register property).

**United States Department of the Interior
National Park Service**

**National Register of Historic Places
Inventory—Nomination Form**



Continuation sheet

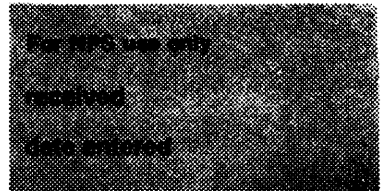
Item number 7

Page 2

- 25) Kring-Cate House (NW corner Church & Spruce Streets) ca. 1865-70; basically I-type dwelling, 2-story with 1-story rear extension, N wing, 5-bay front, shallow hipped roof, end chimneys, 1-story full length porch with scroll-cut trellis supports, bracketed eaves; center-hall plan; kitchen wing added to NW rear c. 1955, good example of Victorian detail applied to traditional house type; 19th c. picket fence.
- 27) Gainesville Methodist Church (NE corner Webster & Spruce Streets) 1872; late Greek Revival; 1-story, frame, rectangular, 3-bay pilastered and pedimented facade. 2 stage louvered belfrey; open interior plan with vestibule at front, shallow apse at rear, small gallery, original paneled and grained pews, unusual alcove recesses behind pulpit dais and choir area at rear; original c. 1872 reed organ.
- 28) Travis-Derryberry-Harwood House (South side Spruce Street): c. 1846, Greek Revival, 1-story, frame, basically H-shaped, broad gable roof, seven-bay front with five-bay inset Doric Portico and connecting wheatsheaf balustrade, pedimented and pilastered end pavilions, 6/6 sash; center hall with flanking drawing rooms, pair of sliding doors on either side of hall enabling center section of house to be opened into single large entertaining area, two-room end wings; woodwork adapted from Asher Benjamin; lower part of portico columns replaced by brick piers early 20th c.; rear porch enclosed and shed addition built c. 1946; front lawn enclosed by 19th c. picket fence. Out buildings: (a) two barns (20th c.); (b) c. 1920 tenant house.
- 29) St. Alban's Episcopal Church (SE corner McKee & Spruce Streets): 1879; Carpenter Gothic, 1-story, frame, steeply pitched gable roof with subordinate cross-gables, rectangular nave and chancel with square entrance tower at NW corner, secondary entrance porch on S. projecting sacristy off N. side of chancel, wooden buttresses; open interior plan with center aisle, original ship pews, stained glass windows including both geometrical and traditional Christian symbolism; 19th c. organ, lamps, marble front, tower capped by truncated roof originally terminating in metal cresting (now replaced by small louvered belfry).
- 30) Cooke House (SE corner Church & Spruce Streets): c. 1840, 1½-story clapboard, rectangular, gable roof with massive end chimneys; probably open hall or "dog trot" originally (enclosed late 19th c.); extensively altered and enlarged by rear wings, bungalow-type porch and shed dormer added (c. 1920). Outbuildings: (a) c. 1890 stabel, fram, two story; (b) frame toolshed, 20th c.
- 31) Jackson-Smith House (South side Spruce Street, East of Church) c. 1845, 1860; 1-story frame, U-shaped with parallel rear wings, 5-bay front, gable roof, small pedimented porch with flanking bay windows; center-hall plan; renovated to present appearance c. 1860; 19th c. picket fence; to S (rear) of house is site of Turner Reavis House, burned in 1946. Outbuildings: (a) c. 1860 kitchen-servant house (frame, two rooms); (b) c. 1860 latticed wellhouse.

**United States Department of the Interior
National Park Service**

**National Register of Historic Places
Inventory—Nomination Form**



Continuation sheet

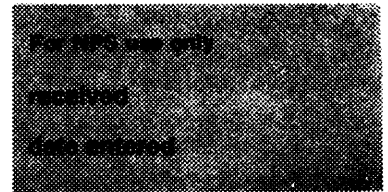
Item number 7

Page 3

- 12) Roberts-Parham House (East side McKee Street); c. 1835-40, 1-story, clapboarded, rectangular (5-bay front) with ell, gable roof, end chimney with unusual pent at NE corner, porch with trellis-like scrollcut supports, 6/6 sash; center-hall plan; basement service area opening to ground level at rear; originally 1½ or 2 story, extensively altered c. 1860-70 including addition of present porch; 19th c. picket fence at front.
- 13) Minniece-Roberts House (SE corner Sanders and Pearl Streets) c. 1835-1840; 1½ story, clapboarded, rectangular (4-bay front) with low inset rear ell, gable roof, thru interior chimneys, full length porch with trellis supports and balustraded parapet, three part modified Palladian windows across front, narrow bay windows at each side, 6/6 sashings; originally center-hall plan; house enlarged c. 1870 by one-bay S extension, renovated (including trellis-supports and bay windows); 19th c. picket fence. Outbuildings: (a) two toolsheds, 20th century; (b) carriage house, frame, late 19th century; (c) pumphouse, 20th century, concrete.
- 14) John M. Smith House (NW corner Church and Chestnut Streets) c. 1840; modified Greek Revival; 1½ story, 5-bay front, gable roof, pedimented tetrastyle portico, double-leaf door with sidelights and transom; center-hall plan; interior extensively altered c. 1940, North side wing removed.
- 16) Roberts-Smith-Cargile House (NW corner Sanders and Chestnut Streets); 1851; 1-story, clapboarded, rectangular (5-bay front), gable roof; center-hall plan; semi-detached "guest room" added to SE corner in 1908, original square porch supports also replaced by turned posts; 19th c. picket fence. Outbuildings: (a) toolhouse, early 20th c., frame.
- 18) Knox-Williams-Ford House (SW corner Chestnut and Webster Streets) c. 1840; frame, 1-story, hipped roof; originally two rooms (enlarged early 20th c.) surviving from two-story dwelling originally owned by Knox and Williams family; most of structure razed in late 19th c.
- 21) Allison-McLelland House (SE corner Chestnut and McKee Streets) c. 1870; modified Italianate, 2-story, with 1-story side wing, frame, shallow hipped roof, 1-story porch with trellis-like scroll cut supports, bay window with bracketed cornice, 6/6 sash; side-hall plan; porch enlarged and modified early 20th c. including replacement of lower part of trellis supports with brick piers; picket fence.
- 24) Ellis House (NE corner Church and Spruce Streets) c. 1850; Greek Revival, 1-story, frame, rectangular (5-bay front), hipped roof, central pedimented tetrastyle Doric portico, double-leaf doors with sidelights and transom; center-hall plan; also large central rear wing with semi-detached kitchen added late 19th c.; extensive remaining picket fence at front, sides, rear. Outbuildings: (a) c. 1900 barn, 1-story with loft, board and batten.

**United States Department of the Interior
National Park Service**

**National Register of Historic Places
Inventory—Nomination Form**



Continuation sheet

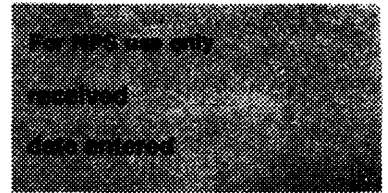
Item number 7

Page 4

- 32) Meeks-Mitchell-Norwood House (South end of Church Street) c. 1850; Greek Revival; 1-story, frame, rectangular, pedimented porch later extended with fluted Doric columns, clipped gable roof, 9/6 sashing; originally side-hall plan; house enlarged late 19th c. by two-bay extension to either side, also addition of semi-detached kitchen ell (c. 1890).
Outbuildings: (a) c. 1940 garage; (b) barn, 20th c.
- 33) Aduston Hall (East side Alabama Hwy. 39) c. 1844; Greek Revival; 1-story, basically H-shaped frame, gable roof with cross-gables, seven-bay facade with inset (five-bay) Doric portico, pedimented and pilastered end pavilions, fluted columns of portico linked by wheatsheaf-style balustrade, secondary pedimented Doric porticoes on each side elevation, central doorway with side-lights and transom, 9/9 sash windows; central block bisected by hall with single large room to either side connecting with three-room deep end pavilions, double parlors to left (N) of hall with paneled sliding doors between, Greek Revival-style interior woodwork; semidetached kitchen ell added c. 1890, rear inset porch enclosed early 20th c.; front yard and garden on N side enclosed by 19th c. picket fence.
Outbuildings: (a) c. 1844 office (frame, rectangular, one-story, gabled roof) to south of main building and used as ancillary to main building; (b) c. 1844 smokehouse (frame, rectangular gable roof with shed porch, two-room plan; (c) c. 1850 wellhouse in garden (open with pyramidal roof).
One of the most important components of historic district; Aduston Hall is one of two ante-bellum dwellings in Gainesville which retains complex of early dependencies.

**United States Department of the Interior
National Park Service**

**National Register of Historic Places
Inventory—Nomination Form**



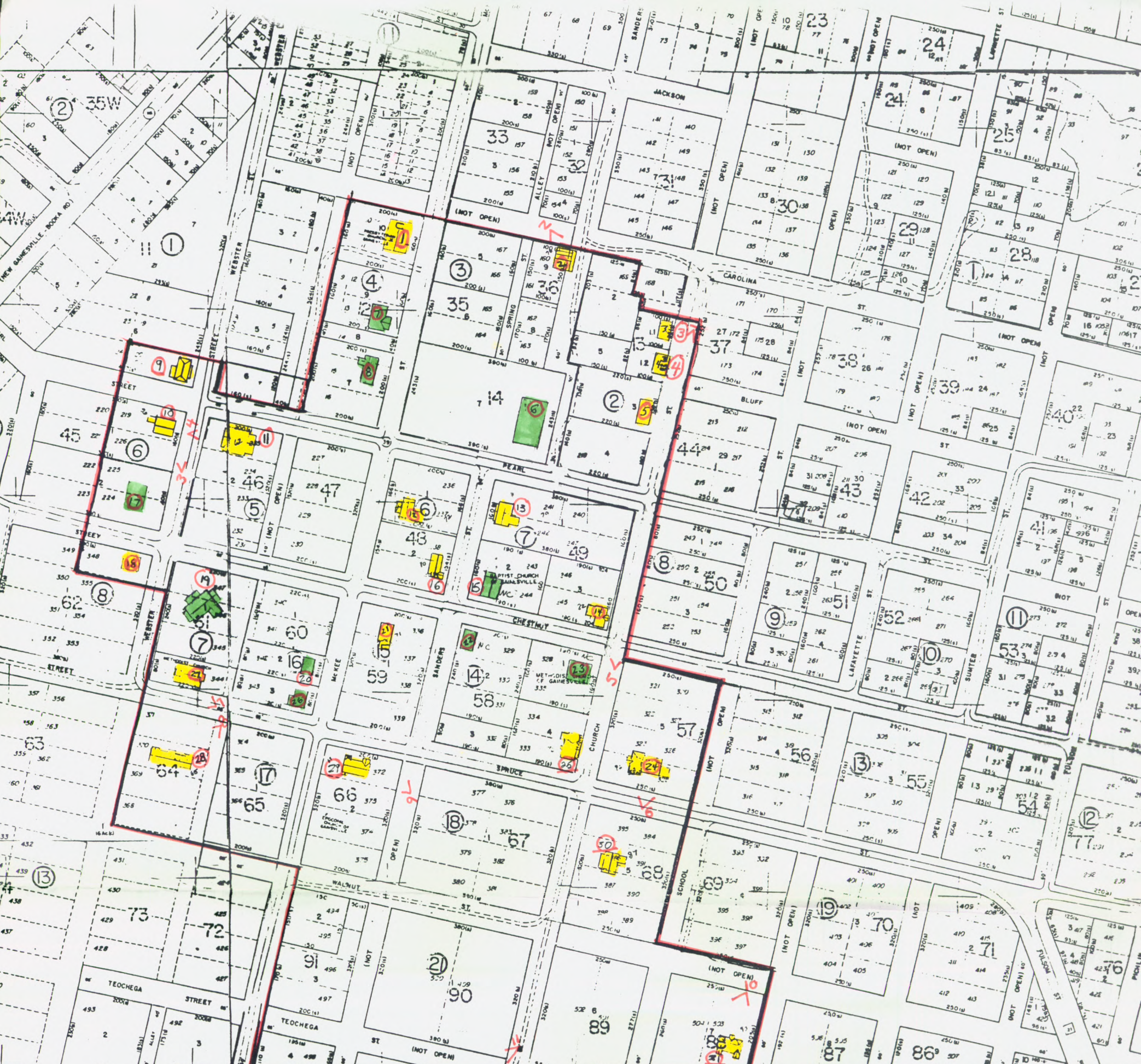
Continuation sheet

Item number 7

Page 5

GAINESVILLE HISTORIC DISTRICT - NON-CONTRIBUTING STRUCTURES:

- 6) House (North side Pearl Street East of Sanders) c. 1960, 1-story cinderblock dwelling, original site of mid-19th century dwelling.
- 7) Chamber House (West side McKee Street) 1965, frame with shingle siding, gable roof with porch; incorporates materials from ante-bellum Presbyterian manse which stood on the same site.
- 8) House (West side McKee Street) c. 1960, frame, ranch style, gable roof.
- 15) Gainesville Baptist Church (NE corner Chestnut & Sanders Streets) c. 1960 1-story brick church built on site of 1858 Greek Revival-style Baptist Church.
- 17) House (NW corner Webster & Pearl Streets) c. 1965; one-story brick, gable roof; site of ante-bellum one-story Garth House.
- 19) House (SE corner Webster & Pearl Streets) c. 1965; one-story brick, gable roof; site of ante-bellum one-story Garth House.
- 20) House (West side of McKee Street) c. 1965, 1-story, shingle, gable roof.
- 22) House (SE corner Chestnut & Sanders Street) 1968; 1-story, brick veneer, hipped roof, ranch-style.
- 23) Methodist Parsonage (SW corner Church & Chestnut Streets) c. 1960, 1-story, frame with asbestos shingles, hipped roof.
- 26) House (NW corner McKee & Spruce) c. 1965, 1-story, shingle, gable roof, attached garage.



GAINESVILLE HISTORIC DISTRICT
GAINESVILLE, AL

DATE OF MAP 1/25/78 DATE OF PHOTOGRAPHY 1/25/78



108 Ac (6)
②

12

