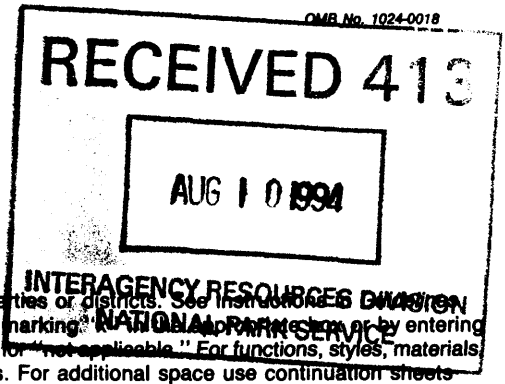


United States Department of the Interior National Park Service

National Register of Historic Places Registration Form



This form is for use in nominating or requesting determinations of eligibility for individual properties or districts. See instructions for Completing National Register Forms (National Register Bulletin 16). Complete each item by marking "N/A" for "not applicable." For functions, styles, materials and areas of significance, enter only the categories and subcategories listed in the instructions. For additional space use continuation sheets (Form 10-900a). Type all entries.

1. Name of Property

historic name ISAAC GLOVER HOUSE other names/site number CHALKLEY-GLOVER HOUSE

2. Location

street & number 1908 New Jersey Avenue not for publication N/A city, town Haddon Heights vicinity N/A state New Jersey code NJ- 034 county Camden code 007 zip code 08035

3. Classification

Table with 3 columns: Ownership of Property, Category of Property, and Number of Resources within Property. Includes checkboxes for private/public ownership and building/site/structure/object categories.

Name of related multiple property listing: Haddon Heights Pre-Revolutionary Houses

Number of contributing resources previously listed in the National Register N/A

4. State/Federal Agency Certification

As the designated authority under the National Historic Preservation Act of 1966, as amended, I hereby certify that this nomination request for determination of eligibility meets the documentation standards for registering properties in the National Register of Historic Places and meets the procedural and professional requirements set forth in 36 CFR Part 60. In my opinion, the property meets does not meet the National Register criteria. See continuation sheet. Signature of certifying official: Assistant Commissioner for Natural & Historic Resources/DSHPO

In my opinion, the property meets does not meet the National Register criteria. See continuation sheet. Signature of commenting or other official

5. National Park Service Certification

I, hereby, certify that this property is: entered in the National Register. determined eligible for the National Register. determined not eligible for the National Register. removed from the National Register. other, (explain:)

Signature of the Keeper

Date of Action

6. Function or Use

Historic Functions (enter categories from instructions)

Domestic: Single Dwelling

Current Functions (enter categories from instructions)

Domestic: Single Dwelling

7. Description

Architectural Classification
(enter categories from instructions)

Georgian

Materials (enter categories from instructions)

foundation Stone

walls Brick

roof Asphalt shingle

other Wood shingle siding

Describe present and historic physical appearance.

The Isaac Glover House is located on the south side of New Jersey Avenue, facing northward toward the street and toward the King's Highway, a block away. The building is of brick, rectangular in plan, 2 1/2 stories in height. The house was built in two sections. The first, built during the first half of the 18th century, forms the eastern part of the present building; the addition, built during the last quarter of the 18th century, was carefully designed as a continuation of the original house. This description will consider first the original house, then its additions and alterations.

As first built, the main (north) facade of the house was three bays wide with a central entrance. It is of brick, laid in Flemish bond, above a foundation of rubble stone. There is a carefully constructed brick belt course approximately at the level of the second floor and twin chimneys, now stuccoed, that originally served fireplaces at each front corner of the building. The roof was a wood shingled gable (now covered with composition shingles), the ridge parallel to the facade.

The exposed original east end is of brick, laid in common bond with headers every sixth course. It has original windows at the second floor and attic levels but a wide, modern window in the first story. A masonry patch indicates that this is the second window installation in this location, the first having been even wider, but a reconstruction of the original plan suggests that neither was original.

The south (rear) elevation, now largely concealed by a modern single-story addition, although laid in common bond, mirrors the front elevation except for the omission of the central window. The original west wall was concealed within the 18th century addition.

In the latter quarter of the 18th century the house was approximately doubled in size by a three-bay addition that closely matched the original in design, material, and construction. Like the original it has a central entrance, and its (west) end chimney forms a uniform series with the two originals. The added west elevation approximates the original one on the east, although its common bond has headers only in every eighth to tenth course. It has a single window at each of the three levels, as well as a blind stuccoed lunette in the gable peak.

See continuation sheet

8. Statement of Significance

Certifying official has considered the significance of this property in relation to other properties:

nationally statewide locally

Applicable National Register Criteria A B C D

Criteria Considerations (Exceptions) A B C D E F G N/A

Areas of Significance (enter categories from instructions)
Architecture

Period of Significance
18th Century

Significant Dates
ca. 1750

Cultural Affiliation

N/A

Significant Person
N/A

Architect/Builder
unknown

State significance of property, and justify criteria, criteria considerations, and areas and periods of significance noted above.

Although the builder and early occupants of this house have not been determined, architectural evidence indicates that the eastern portion was present during the first half of the 18th century and was doubled in size by an addition to the west, apparently constructed during the last quarter of the 18th century.

The house seems to have come into the ownership of the Glover family during the second half of the 18th century. Isaac Glover, the earliest recorded owner, held it in 1807, but may have acquired it somewhat earlier. Maps published in 1860 and 1877 indicate John D. Glover as the owner. A board with the latter Glover's signature in pencil, discovered on the second floor, undoubtedly dates from this period.

The house is significant as one of four remaining 18th century buildings in the Borough of Haddon Heights. It contains an interesting body of evidence regarding early 18th century design and construction practice in the locality as well as significant architectural artifacts from the latter 18th century.

(research assistance by William Leap, Runnemede, New Jersey)

See continuation sheet

9. Major Bibliographical References

See Multiple Property Documentation Form

Previous documentation on file (NPS): N/A
 preliminary determination of individual listing (36 CFR 67) has been requested
 previously listed in the National Register
 previously determined eligible by the National Register
 designated a National Historic Landmark
 recorded by Historic American Buildings Survey # _____
 recorded by Historic American Engineering Record # _____

See continuation sheet

Primary location of additional data:

- State historic preservation office
- Other State agency
- Federal agency
- Local government
- University
- Other

Specify repository:
Haddon Heights Historic Preservation
Commission

10. Geographical Data

Acreage of property approximately one-half acre

UTM References

A 18 493040 4414257
Zone Easting Northing

B _____
Zone Easting Northing

C _____

D _____

Camden, NJ Quad

See continuation sheet

Verbal Boundary Description

Block 129A, Lot 5, Borough of Haddon Heights, Camden County, New Jersey

See continuation sheet

Boundary Justification

The parcel of land containing the resource. The original land holding has long since been divided into multiple lots.

See continuation sheet

11. Form Prepared By

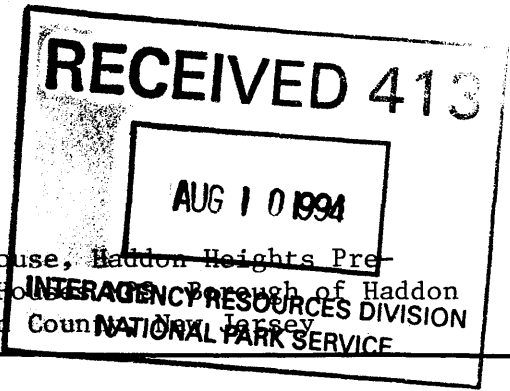
name/title <u>Craig Morrison, AIA</u>	date <u>July 28, 1988</u>
organization _____	telephone <u>(215) 423-3595</u>
street & number <u>2207 Emerald Street</u>	state <u>Pennsylvania</u> zip code <u>19125</u>
city or town <u>Philadelphia</u>	

United States Department of the Interior
National Park Service

National Register of Historic Places
Continuation Sheet

Section number _____ Page _____

Isaac Glover House, Haddon Heights Pre-
Revolutionary House, Borough of Haddon
Heights, Camden County, New Jersey
INTERAGENCY RESOURCES DIVISION
NATIONAL PARK SERVICE



As the designated authority under the National Historic Preservation Act, as amended, I hereby certify that this nomination request for determination of eligibility meets the documentation standards for registering properties in the National Register of Historic Places and meets the procedural and professional requirements set forth in 36 CFR Part 60. In my opinion, the property meets does not meet the National Register criteria. I recommend that this property be considered significant nationally statewide locally. (See continuation sheet for additional comments.)

Signature of certifying official *[Signature]* Title Assistant Commissioner for Natural & Historic Resources/DSHPO
Date 8/1/94
State of Federal agency and bureau _____

United States Department of the Interior
National Park Service

National Register of Historic Places
Continuation Sheet

Isaac Glover House, Haddon Heights Pre-
Revolutionary Houses MPS, Borough of
Haddon Heights, Camden County, NJ

Section number 7 Page 2

The house retains its original wooden box cornices and, with the exception noted in the east elevation, its original window frames, although all sash have been replaced. All window and door openings are rectangular and have no masonry lintels or arches. The first floor window frames have original drive pintles; the second floor never was fitted with shutters. The windows in the addition are slightly larger in dimension and somewhat lighter in construction than the older ones, and the earlier doorway has a four-light transom, while the newer one has three lights, subtle differences that are to be expected from the stylistic and constructional advances that occurred during the course of the 18th century. The original door frames, with rectangular transom lights, remain, however both doors have been clad with plywood and at least one may be a replacement.

Postdating the construction of the house, possibly as recently as the early 20th century, a porch was added along the north side, spanning and joining the two early segments of the house. It is characterized by four heavy tapered round columns of stuccoed brick supporting a single-sloping roof. The floor recently has been rebuilt in concrete. As noted above, a long, narrow single-story addition, shed roofed and sheathed in wood shingles on the south and west and brick on the east, has been made to the south side of the house.

While the general character of the interior is that of the 20th century, it retains several superb items of original 18th century architectural embellishment as well as ample evidence of the building's original layout and early development.

The basement extends fully beneath the structure and has an open joist ceiling throughout. In the earliest (eastern) portion of the house the framing indicates an original first floor division into two rooms, the eastern one approximately twice the size of the western, each with an angled fireplace in the north corner. The northwestern fireplace was supported on a corbel, while the northeastern one was of much greater size and was supported on an arched construction of brick and stone. In the southeastern corner was a winding stair abutted to the north by an angled construction, perhaps a corner cabinet. The angled framing of the cabinet and the fireplace intersect at the east wall, approximately in the location of the altered window, which, apparently, was not the extant in any form. The present first floor consists of a single room with a mid-20th century corner fireplace in the northeast corner. This is of stone construction, raised from the floor, and incorporates an iron crane that was found in the early fireplace that it replaced. A scar on the ceiling corresponds to the original partition location, evidence of which may be seen in the basement ceiling. All trimwork is 20th century.

United States Department of the Interior
National Park Service

**National Register of Historic Places
Continuation Sheet**

Isaac Glover House, Haddon Heights Pre-
Revolutionary Houses MPS, Borough of
Haddon Heights, Camden County, NJ

Section number 7 Page 3

The early addition to the house consisted of a single room, trimmed in much higher style than the original, with a graceful stairway, with turned newels and spindles and a ramped handrail, in the southeast corner. A partition of relatively recent date separates the stair and entrance into a corridor, and an arched opening in the brick party wall now interconnects the two portions of the house. The first floor of the addition, now a dining room, retains its original chair rail and base. In the northwest corner there is the original late 18th century carved wooden mantel, while in the southwest corner is a display cabinet embellished in a fashion similar to the mantel, with dentil cornice, carved keystone, scalloped shelf edges, and a reeded vertical trim piece at the rear center of the semi-circular interior.

Second and third floor rooms retain certain elements of original trim as well as historically significant additions, including a notable Colonial Revival mantelpiece in the northwest second floor bedroom. Recent removal of the stop bead from a doorway in the brick party wall revealed the signature of John D. Glover, written in pencil on the wood prior to painting.

PHOTOGRAPHS, PAGE 1

- #1 General view of main facade, looking southeast
- #2 East elevation, looking west
- #3 West elevation, looking east
- #4 General view of rear facade and addition, looking northeast
- #5 Addition interior, view of stairway from first landing
- #6 Addition interior, original mantel, looking northwest
- #7 Addition interior, original corner cupboard, looking southwest

All photographs by Craig Morrison, AIA, July, 1988

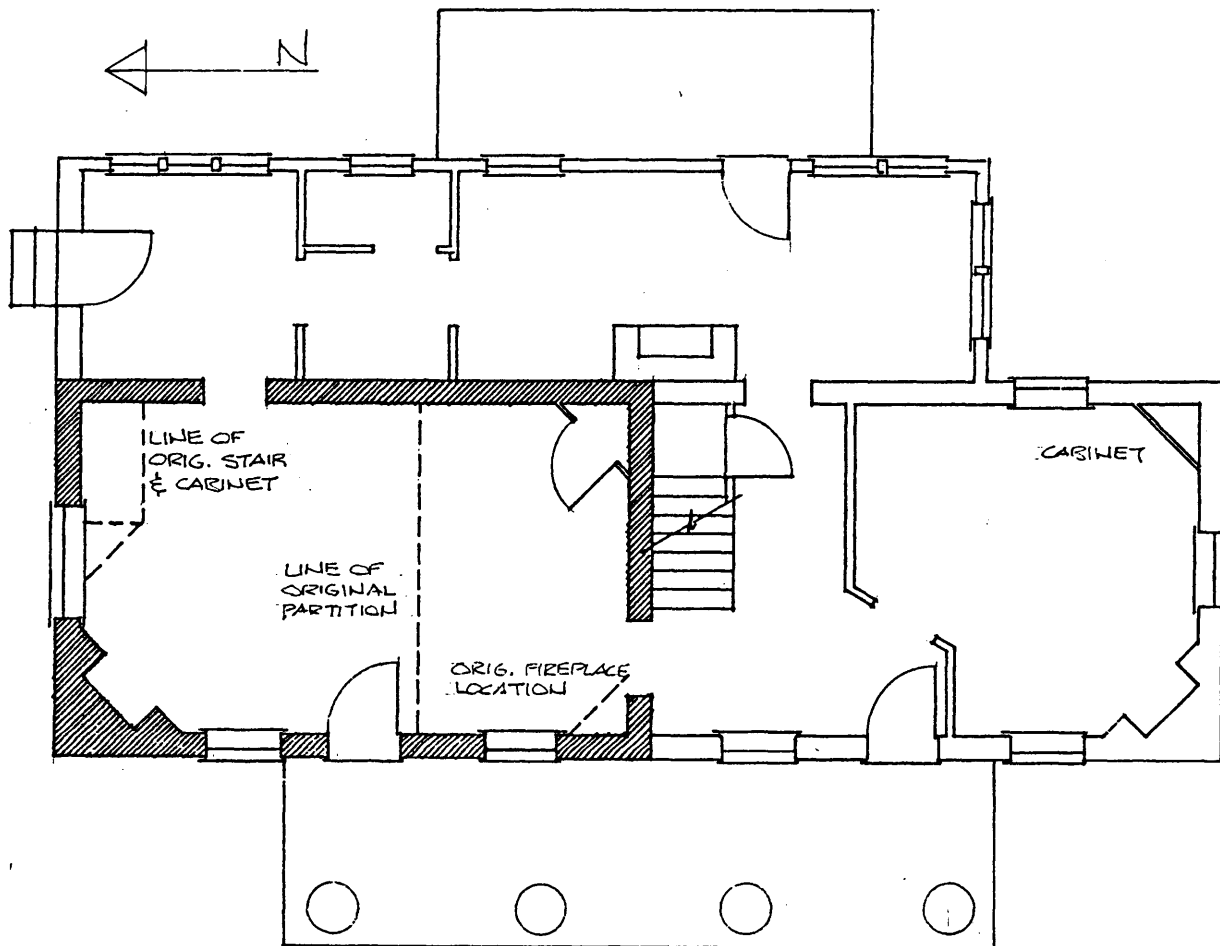
Negatives deposited with the New Jersey Department of Environmental Protection, Division of Parks & Forestry, Office of New Jersey History

United States Department of the Interior
National Park Service

National Register of Historic Places
Continuation Sheet

Isaac Glover House, Haddon Heights Pre-
Revolutionary Houses MPS, Borough of Haddon
Heights, Camden County, NJ

Section number 7 Page 4



CHALKLEY-GLOVER HOUSE

SKETCH PLAN - FIRST FLOOR

EARLIEST PORTION SHADED

BORO OF MOUNT EPHRAIM



Isaac Glover House
Haddon Heights Pre-
Revolutionary Houses MPS

REVISED TO OCT. 1, 1975 BY
REVISIONS BY BOB DUNNERS
M/1288. Revised lot nos etc. - (U) Dennis Smith, E.

PLAT NO. 147
NOV 27 1930
BOROUGH OF MOUNT EPHRAIM

BOROUGH OF
HADDON HEIGHTS
COUNTY OF CAMDEN, NEW JERSEY
SCALE 1"=100' 1950
PLOTTED FROM RECORDS AND SURVEYS
BY
ROBERTSON & JOHNSON
BOROUGH ENGINEERS
Revised to Oct. 1, 1975 by
REVISED NOV. 5, 1974 BY HAYWORTH BERNHE & GUNARD ASSOC.