

SCHOONER BOWDOIN
CASTINE, MAINE

Owner: SCHOONER BOWDOIN ASSOCIATION, INC.
BOWDOIN, CLAD IN WINTER ICE, AT REFUGE
HARBOR, GREENLAND, APRIL 10, 1924.

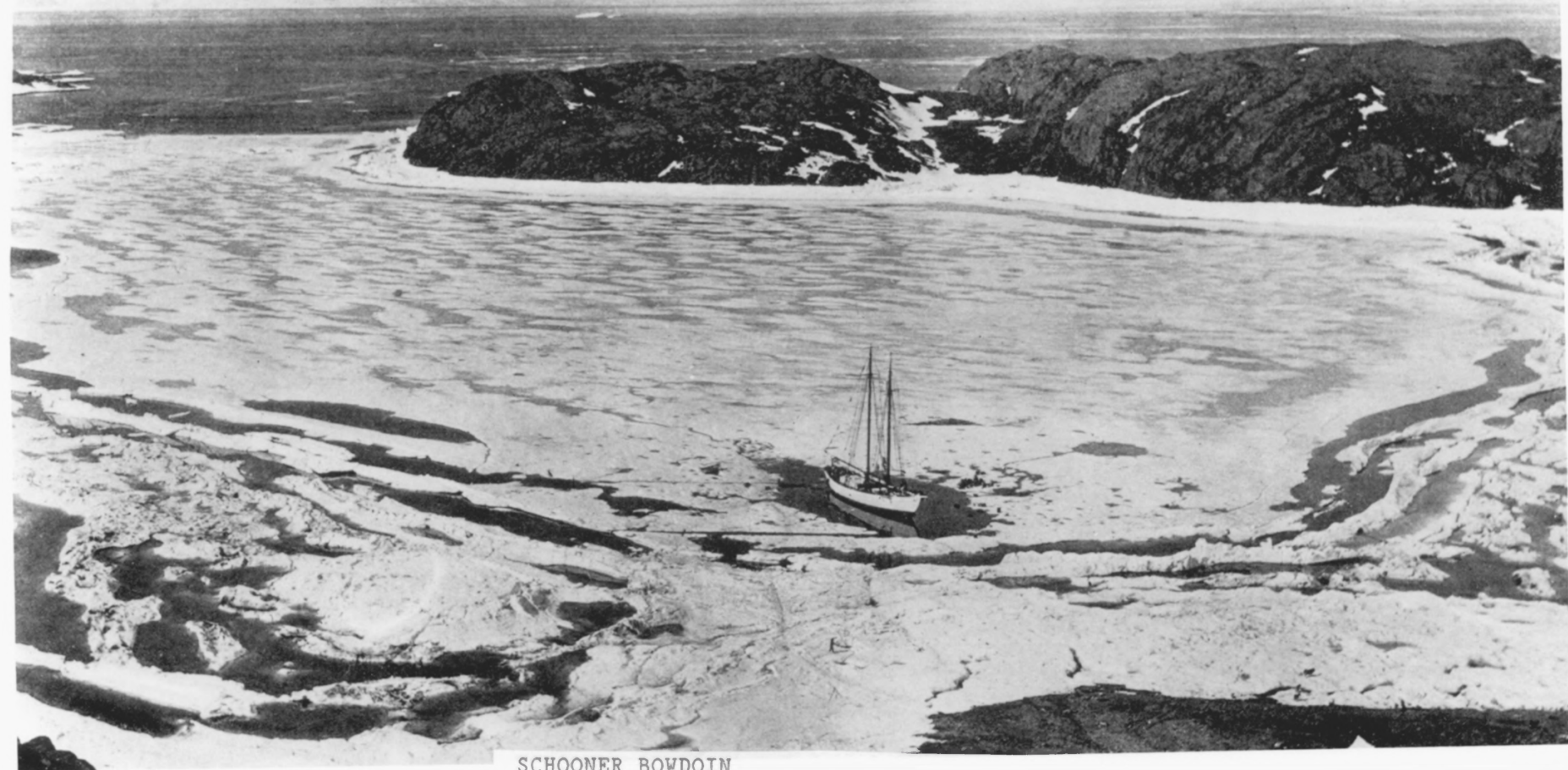
Photo #1 by DONALD B. MACMILLAN, 1924
Courtesy of: NATIONAL GEOGRAPHIC SOCIETY



SCHOONER BOWDOIN
CASTINE, MAINE

Owner: SCHOONER BOWDOIN ASSOCIATION, INC.
BOWDOIN CRUISING OFF THE MAINE COAST IN
1988.

Photo #3 by ALISON KULLER, 1988
Courtesy of: OUTWARD BOUND, INC.



SCHOONER BOWDOIN
CASTINE, MAINE

Owner: SCHOONER BOWDOIN ASSOCIATION, INC.
BOWDOIN IN MIDSUMMER AT REFUGE HARBOR,
GREENLAND, JULY 1, 1924.

Photo #2 by DONALD B. MACMILLAN, 1924
Courtesy of: NATIONAL GEOGRAPHIC SOCIETY



SCHOONER BOWDOIN
CASTINE, MAINE

Owner: SCHOONER BOWDOIN ASSOCIATION, INC.
PORT BOW VIEW OF BOWDOIN AT CASTINE,
MAINE.

Photo #4 by JAMES P. DELGADO. 1989
Courtesy of: NATIONAL PARK SERVICE



SCHOONER BOWDOIN
CASTINE, MAINE

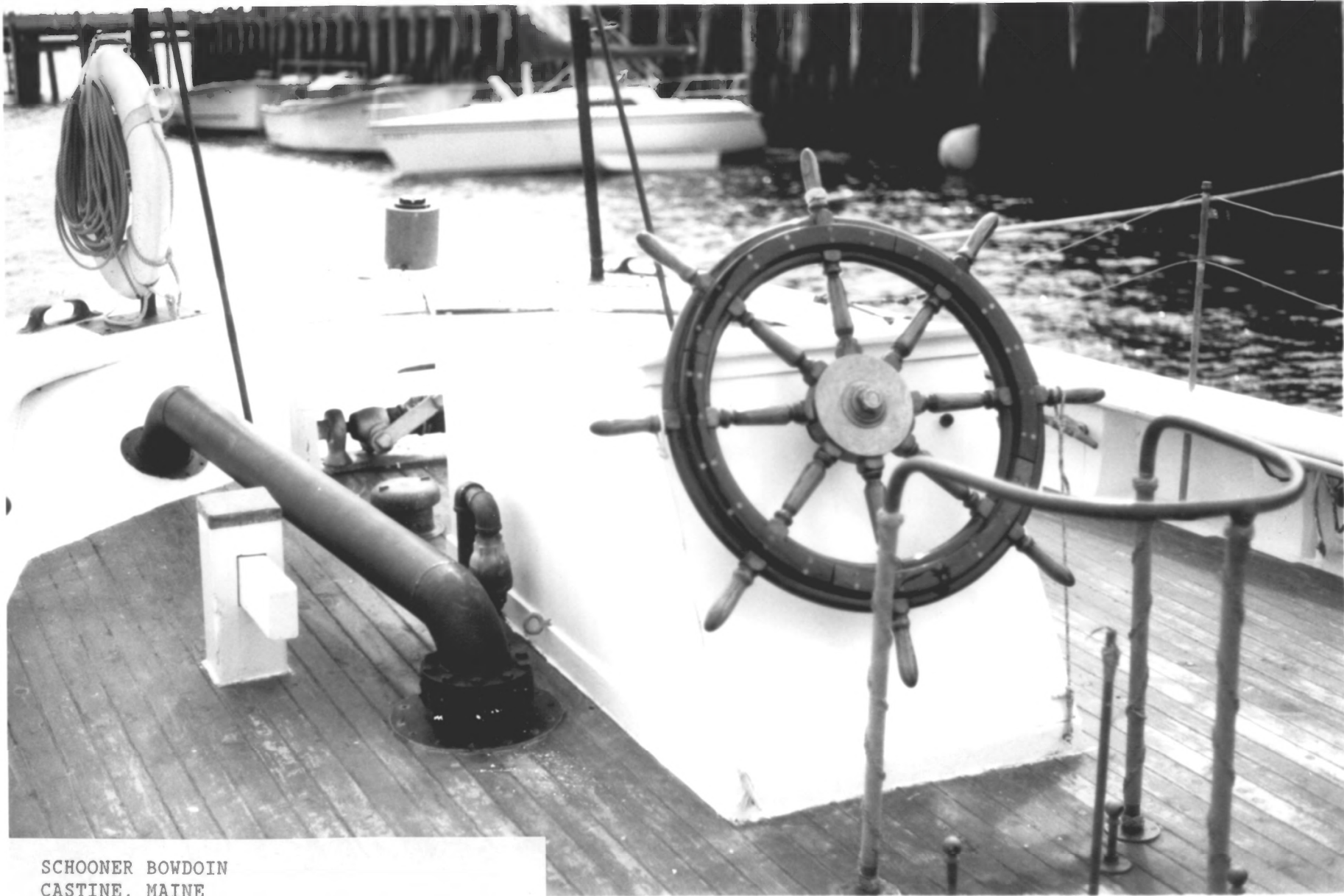
Owner: SCHOONER BOWDOIN ASSOCIATION, INC.
BOWDOIN'S BELL ON THE MAINMAST.

Photo #5 by JAMES P. DELGADO, 1989

Courtesy of: NATIONAL PARK SERVICE



SCHOONER BOWDOIN
CASTINE, MAINE
Owner: SCHOONER BOWDOIN ASSOCIATION, INC.
VIEW OF THE FORECASTLE DECK, SHOWING THE
ORIGINAL WINDLASS.
Photo #6 by JAMES P. DELGADO, 1989
Courtesy of: NATIONAL PARK SERVICE



SCHOONER BOWDOIN
CASTINE, MAINE

Owner: SCHOONER BOWDOIN ASSOCIATION, INC.
VIEW OF POOP, SHOWING THE WHEEL, BOX, &
ENGINE EXHAUST

Photo #7 by JAMES P. DELGADO, 1989