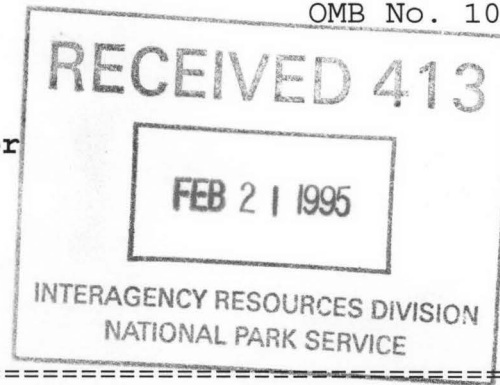


272

United States Department of the Interior  
National Park Service



**NATIONAL REGISTER OF HISTORIC PLACES  
REGISTRATION FORM**

=====

**1. Name of Property**

=====

historic name: Pettigrew School

other name/site number: MA0049

=====

**2. Location**

=====

street & number: N. of AR Hwy. 16

not for publication: N/A

city/town: Pettigrew

vicinity: N/A

state: AR county: Madison code: AR 087 zip code: 72752

=====

**3. Classification**

=====

Ownership of Property: Public-local

Category of Property: Building

Number of Resources within Property:

| Contributing  | Noncontributing |            |
|---------------|-----------------|------------|
| <u>1</u>      | <u>1</u>        | buildings  |
| <u>      </u> | <u>1</u>        | sites      |
| <u>      </u> | <u>      </u>   | structures |
| <u>      </u> | <u>      </u>   | objects    |
| <u>1</u>      | <u>2</u>        | Total      |

Number of contributing resources previously listed in the National Register: N/A

Name of related multiple property listing: N/A

\_\_\_\_\_

=====

#### 4. State/Federal Agency Certification

=====

As the designated authority under the National Historic Preservation Act of 1986, as amended, I hereby certify that this X nomination \_\_\_\_\_ request for determination of eligibility meets the documentation standards for registering properties in the National Register of Historic Places and meets the procedural and professional requirements set forth in 36 CFR Part 60. In my opinion, the property X meets \_\_\_\_\_ does not meet the National Register Criteria. \_\_\_\_\_ See continuation sheet.

Cathryn A. Slater  
Signature of certifying official

2-6-95  
Date

Arkansas Historic Preservation Program  
State or Federal agency and bureau

In my opinion, the property \_\_\_\_\_ meets \_\_\_\_\_ does not meet the National Register criteria. \_\_\_\_\_ See continuation sheet.

\_\_\_\_\_  
Signature of commenting or other official

\_\_\_\_\_  
Date

\_\_\_\_\_  
State or Federal agency and bureau

=====

#### 5. National Park Service Certification

=====

I, hereby certify that this property is:

- ☒ entered in the National Register  
\_\_\_\_\_ See continuation sheet.  
☐ determined eligible for the  
National Register  
\_\_\_\_\_ See continuation sheet.  
☐ determined not eligible for the  
National Register  
☐ removed from the National Register  
\_\_\_\_\_ other (explain): \_\_\_\_\_

Carl R. Fugate 3/23/95

\_\_\_\_\_  
Signature of Keeper Date  
of Action

=====

#### 6. Function or Use

=====

Historic: Education

Sub: School

Current : Social

Sub: Community Center

=====  
**7. Description**  
=====

Architectural Classification:

N/A  
\_\_\_\_\_  
\_\_\_\_\_

Other Description: Plain Traditional

Materials: foundation Stone roof Metal  
walls Weatherboard other \_\_\_\_\_  
\_\_\_\_\_

Describe present and historic physical appearance. X See continuation sheet.

=====  
**8. Statement of Significance**  
=====

Certifying official has considered the significance of this property in relation to other properties: Local.

Applicable National Register Criteria: C

Criteria Considerations (Exceptions): N/A

Areas of Significance: Architecture  
\_\_\_\_\_  
\_\_\_\_\_  
\_\_\_\_\_  
\_\_\_\_\_  
\_\_\_\_\_

Period(s) of Significance: c. 1915

Significant Dates: N/A

Significant Person(s): N/A  
\_\_\_\_\_

Cultural Affiliation: N/A

Architect/Builder: Unknown  
\_\_\_\_\_  
\_\_\_\_\_

State significance of property, and justify criteria, criteria considerations, and areas and periods of significance noted above.  
X See continuation sheet.

United States Department of the Interior  
National Park Service

National Register of Historic Places  
Continuation Sheet



Section number 7 Page 1

---

**Summary**

The Pettigrew School was constructed c. 1915 as a single-story frame building clad with white-painted simple-drop siding and covered by a corrugated-metal, hipped roof. Exterior alterations have been limited to window replacements and the loss of the bell tower in the late 1970's. The interior features a sliding partition wall, and is largely unchanged with the exception of the installation of a dropped ceiling. An outdoor privy of indeterminate age is the only extant outbuilding associated with the school. Located north of State Highway 16, the Pettigrew School is in good condition.

**Elaboration**

Constructed c. 1915, the Pettigrew School in Pettigrew, Madison County is a single-story frame building that rests upon a continuous fieldstone foundation and is clad with white-painted simple-drop siding. The basically rectangular plan is covered by a corrugated-metal, hipped roof with a central gabled projection on the front elevation. Noteworthy exterior details include a wide frieze band beneath the eaves and the pent-roofed, cornice returns of the front gable end. The school building also retains the original central interior brick chimney.

The front, or southern, elevation is defined by the aforementioned central gable-roof entrance projection. A set of eight concrete steps access the double-leaf doors, which are capped by a single-pane transom, in the center of this bay. The lower halves of the doors are wood-panelled while the upper halves are glazed with a large single pane. These doors, which are flanked by one-over-one windows lead into a cloak room with two additional single-leaf doors accessing the two interior rooms. A square, louvered wood vent, now boarded over, is placed near the peak of the gable end. The front elevation to either side of the gabled entrance bay is fenestrated by a group of four one-over-one, steel-frame windows.

The western elevation is composed of three one-over-one windows and a single-leaf door near the northwest corner. An early photograph reveals that this door was originally a window; however, it appears that the conversion took place at an early date. Currently, this entrance is shielded by a shed roof and accessed by a straight ramp.

Like the front elevation, the rear, or northern, elevation is fenestrated by two groups of four one-over-one windows; however, there are no entrances on center section of this elevation as the wall abuts the steep side of a hill. The eastern elevation contains four symmetrically arranged one-over-one windows.

**United States Department of the Interior  
National Park Service**

**National Register of Historic Places  
Continuation Sheet**

Section number 7 Page 2

---

The interior consists of two hardwood-floored rooms that are separated by two sliding partitions that recede into the attic. The partitions are covered with horizontal beaded board and rest upon a short, vertical beaded-board bulkhead with door-sized openings to either side of the central column, which is actually a very narrow section of the wall complete with wainscoting. Interestingly, the partitions do not have a corresponding opening, and, when closed, the wall has an open square at the bottom on each side of the column. The interior walls are covered with horizontal beaded board and are accented by wainscoting featuring a vertical rendition of the beaded board. There are also two wood-burning stoves with flues entering into the single suspended brick chimney (which is now obscured by the dropped ceiling).

Other than the window to door conversion on the west elevation and the placement of corrugated metal over the original wood shingles in the 1930's, the principal alterations to the school occurred in the late 1970's when grant money was procured to replace the original two-over-two, double-hung with wood frame windows with the current steel-frame units and install a dropped ceiling inside. In addition, the original bell tower was removed in 1978 and installed on a local church.

**United States Department of the Interior  
National Park Service**

**National Register of Historic Places  
Continuation Sheet**

Section number 8 Page 1

---

**Summary**

The Pettigrew School is being nominated under Criteria A and C with local significance for its association with early Pettigrew history and as a good example of a wood-frame, Plain Traditional-style school building.

**Elaboration**

Pettigrew was established in 1897 with the arrival of a branch line of the St. Louis & San Francisco Railroad that originated near Fayetteville in neighboring Washington County. Pettigrew was the eastern terminus of this line, which was constructed to tap the virgin timber stands in the area. Consequently, Pettigrew became a hub for the thriving lumber industry with logs, lumber, ties, and various other wood products shipped from this point. Soon, the town billed itself as the "Hardwood Capital of the World" and claimed that more hardwood lumber was shipped by rail from here than from any other point in the United States. Not surprisingly, the railroad and timber industry precipitated a population boom, and the census of the surrounding Kentucky township recorded an increase from 930 residents in 1890 to 1385 in 1900.

Although this burgeoning population was primarily employed by the sawmills and stave mills, the turn-of-the-century town also consisted of two hotels, a bank, doctors offices, livery stables, general stores, a church, a drugstore, a saloon, blacksmith shops, eating establishments, a weekly newspaper, *The Pettigrew Journal*, and a school. Unfortunately, the boom was relative to the amount of trees cut, and by 1910 the effects of the diminishing forest were underscored by a population decrease to 956 residents. By 1920, the trees were depleted and only 518 people resided in the township.

A photograph of the town dated 1907-1908 reveals an earlier school building, and it is thought that the nominated structure was constructed sometime between 1908 and 1915, when it is recorded that the school board was making payments on the building construction. It is also recorded that the community pledged to furnish 13,000 shingles for half of the roof, 5,000 board feet of lumber to build a foot bridge across the White River from the business district to the school grounds, twenty-five bags of cement for bridge pier and steps, 228 perch of stone for a retaining wall and steps, ten yards of sand and gravel, and nails and bolts for the bridge. All were completed with the exception of the retaining wall. This auspicious beginning was marred somewhat in 1920 when the Citizens Bank filed suit against the school board for the final payment on the construction note.

**United States Department of the Interior  
National Park Service**

**National Register of Historic Places  
Continuation Sheet**

Section number 8 Page 2

---

There were several other rural schools in the surrounding area; however, the Pettigrew School was the largest and accepted the rural school district students whenever those schools closed temporarily due to insufficient operating funds. As transportation improved and education standards evolved, many of these schools were eventually consolidated with the Pettigrew district.

Still, the expanded district never outgrew the Pettigrew School Building, although in the 1950's the community decided to construct a lunch room building to the west of the school. A well was drilled for the occasion, and the building was constructed with donated materials and labor. Interestingly, this much newer structure no longer survives. The Pettigrew school district operated until 1963 when it, too, succumbed to consolidation, and the students were enrolled in the St. Paul school district. Since that time, the structure has been utilized as a community building and was altered somewhat in the late 1970's by an influx of ill-spent matching grant money. Currently, a Committee for Rehabilitation and Adaptive Restoration of Pettigrew Community Building has been formed and is seeking funding to restore the Pettigrew School to near-original condition.

The Pettigrew School is locally significant under Criterion A for its association with the early timber-boom history of Pettigrew. Few historic buildings from that period have survived in Pettigrew, and the school, which served as both the educational and social center of town, is easily the most prominent symbol of the past. Under Criterion C, the Pettigrew School is locally significant as a good example of a wood-frame, Plain Traditional-styled school building. Although very traditional in construction and appearance, this design improved on earlier one-room schools by featuring a sliding partition wall to create two rooms and a projecting gable entrance/cloak room. As such, the Pettigrew School is representative of the type of school building construction that occurred chronologically between the simple, one-room log or frame structures that were often used for both school and church services and the later Depression-era, government-funded schools that frequently utilized stone construction, especially in the Ozark Mountains.

=====

## 9. Major Bibliographical References

=====

X See continuation sheet.

Previous documentation on file (NPS):

- ☐ preliminary determination of individual listing (36 CFR 67) has been requested.
- ☐ previously listed in the National Register
- ☐ previously determined eligible by the National Register
- ☐ designated a National Historic Landmark
- ☐ recorded by Historic American Buildings Survey # \_\_\_\_\_
- ☐ recorded by Historic American Engineering Record # \_\_\_\_\_

Primary Location of Additional Data:

- X State historic preservation office
- ☐ Other state agency
- ☐ Federal agency
- ☐ Local government
- ☐ University
- ☐ Other -- Specify Repository: \_\_\_\_\_

=====

## 10. Geographical Data

=====

Acreage of Property: Two \_\_\_\_\_

UTM References: Zone Easting Northing      Zone Easting Northing

|   |           |               |                |   |     |     |     |
|---|-----------|---------------|----------------|---|-----|-----|-----|
| A | <u>15</u> | <u>440300</u> | <u>3963740</u> | B | ___ | ___ | ___ |
| C | ___       | ___           | ___            | D | ___ | ___ | ___ |

\_\_\_ See continuation sheet.

Verbal Boundary Description: \_\_\_ See continuation sheet.

"A part of the N.E. 1/4, of the S.W. 1/4, and a part of the N.W. 1/4 of the S.E. 1/4, Sec. 4, Tp. 13,N. R. 25 West. Beginning at a stone on the North Bank of White river, thence North 36 Degrees, West 8 poles to the center of Sec. 4, Tp. 13,N. R. 25 West, thence South 85-1/2 degrees West 24 poles to a stone, thence South 54 degrees East 24 poles and 25 links to the North Bank of White river, thence with the meandering of said White river to the place of beginning, . . . "

Boundary Justification: \_\_\_ See continuation sheet.

This boundary includes all of the property historically associated with this resource that retains its integrity as well as the noncontributing lunch-room bldg. site and the privy.

**United States Department of the Interior  
National Park Service**

**National Register of Historic Places  
Continuation Sheet**

Section number   9   Page   1  

---

**Bibliography**

"Community Development Planning Proposal." Committee for Rehabilitation and Adaptive Restoration of Pettigrew Community Building, 1994.

Herndon, Dallas T. *Annals of Arkansas*. Little Rock, Arkansas: The Historical Association, 1947. Vol. II.

Information submitted by Louise McCoy, August 1994.

=====

**11. Form Prepared By**

=====

Name/Title: Patrick Zollner, Architectural Historian

Organization: Arkansas Historic Preservation Program Date: February 6, 1995

Street & Number: 323 Center, 1600 Tower Bldg. Telephone: (501) 324-9880

City or Town: Little Rock State: AR ZIP: 72201

United States Department of the Interior  
National Park Service

National Register of Historic Places  
Continuation Sheet

Section number \_\_\_\_\_ Page \_\_\_\_\_

SUPPLEMENTARY LISTING RECORD

NRIS Reference Number: 95000272

Date Listed: 3/23/95

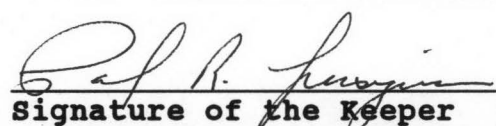
Pettigrew School  
Property Name

Madison  
County

AR  
State

N/A  
Multiple Name

-----  
This property is listed in the National Register of Historic Places in accordance with the attached nomination documentation subject to the following exceptions, exclusions, or amendments, notwithstanding the National Park Service certification included in the nomination documentation.

  
Signature of the Keeper

3/23/95  
Date of Action

=====

Amended Items in Nomination:

Significance:

The appropriate NR criteria and areas of significance are:  
Criterion A - Education, Exploration/Settlement  
Criterion C - Architecture  
[The nomination narrative justifies the property's significance under both Criteria A and C, however, only Criterion C (Architecture) was listed on the nomination cover sheet.]

U.T.M.:

The correct UTM coordinates are:  
15 441300 3963740

This information was confirmed with P. Zollner of the AR SHPO.

DISTRIBUTION:

National Register property file  
Nominating Authority (without nomination attachment)

UNITED STATES DEPARTMENT OF THE INTERIOR  
NATIONAL PARK SERVICE

NATIONAL REGISTER OF HISTORIC PLACES  
EVALUATION/RETURN SHEET

REQUESTED ACTION: NOMINATION

PROPERTY NAME: Pettigrew School

MULTIPLE  
NAME:

STATE & COUNTY: ARKANSAS, Madison

DATE RECEIVED: 2/21/95 DATE OF PENDING LIST: 3/07/95  
DATE OF 16TH DAY: 3/23/95 DATE OF 45TH DAY: 4/07/95  
DATE OF WEEKLY LIST:

REFERENCE NUMBER: 95000272

NOMINATOR: STATE

REASONS FOR REVIEW:

APPEAL: N DATA PROBLEM: N LANDSCAPE: N LESS THAN 50 YEARS: N  
OTHER: N PDIL: N PERIOD: N PROGRAM UNAPPROVED: N  
REQUEST: N SAMPLE: N SLR DRAFT: N NATIONAL: N

COMMENT WAIVER: N

\_\_\_ACCEPT \_\_\_RETURN \_\_\_REJECT \_\_\_\_\_DATE

ABSTRACT/SUMMARY COMMENTS:

The Pettigrew School is significant under NR Criteria A and C, in the areas of Architecture, Education, and Exploration Settlement. Erected c. 1915, the modest wood-frame building is a good example of Plain Traditional-style vernacular construction and reflects the development of rural education in Arkansas during the early twentieth century. Historically, the school served as an important educational and social center and illustrates the earliest phase of community development in Pettigrew.

RECOM./CRITERIA Accept A+C

REVIEWER Paul R. Lusignan DISCIPLINE HISTORIAN

TELEPHONE 202-343-1628 DATE 3/23/95

DOCUMENTATION see attached comments Y/N see attached SLR (Y)N



Pettigrew School  
Madison Co., Arkansas  
Photo by P. Zollner  
Oct. 1994  
Neg. on file at AHPP  
View from the south



Pettigrew School  
Madison Co., Arkansas  
Photo by P. Zollner  
October 1994  
Negative on file at AHPP  
View from the southwest



Pettigrew School  
Madison Co., Arkansas  
Photo by P. Zollner  
October 1994  
Negative on file at AHPP  
View from the northwest



Pettigrew School  
Madison Co., Arkansas  
Photo by P. Zolner  
Oct. 1994  
Neg. on file at AHPP  
View from the southeast



Pet Higrew School  
Madison Co., Arkansas  
Photo by P. Zollner  
Oct. 1994  
Neg. on file at AHPP  
View from the south



Pettigrew School  
Madison Co., Arkansas  
Photo by P. Zollner  
Oct. 1994

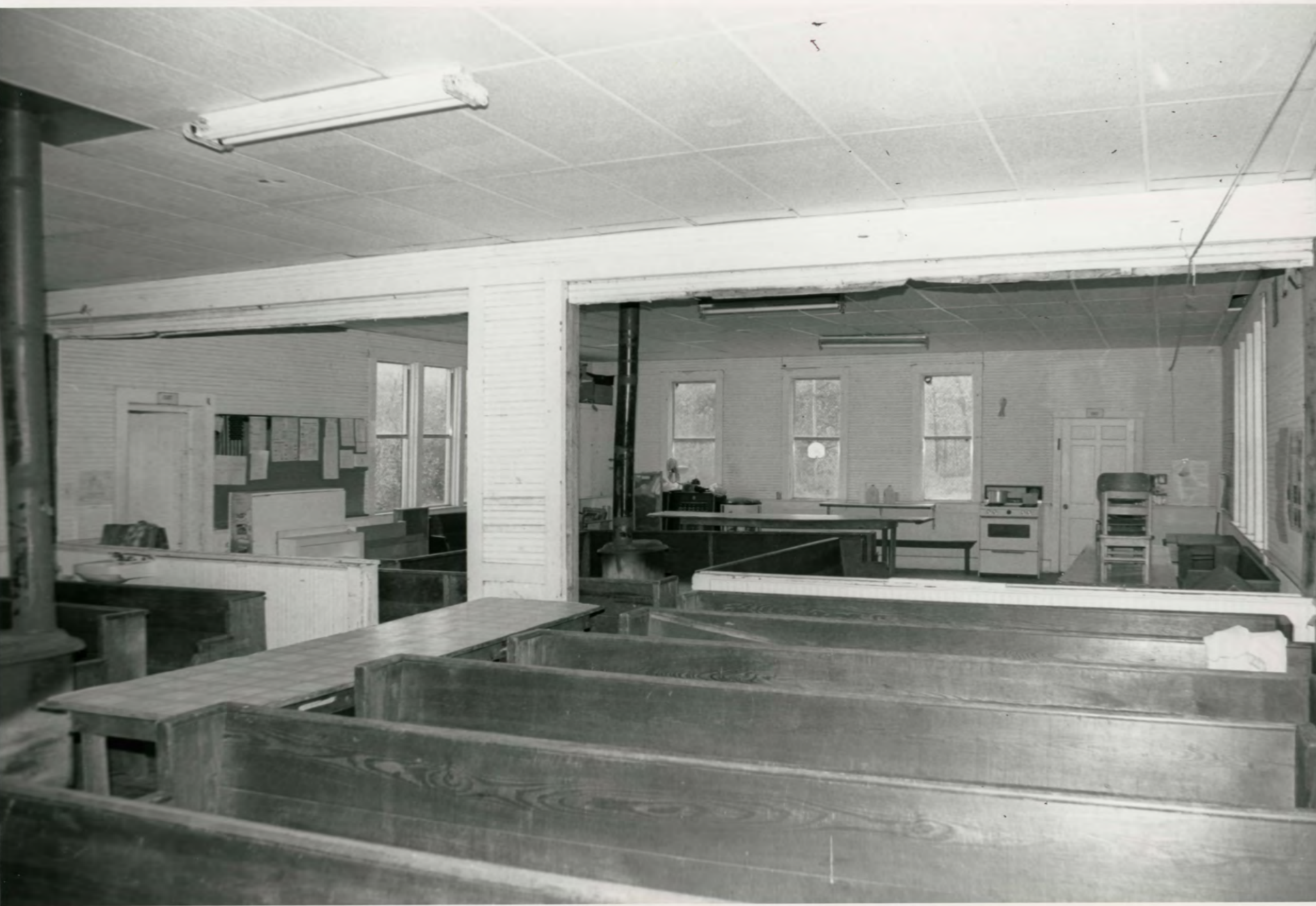
Neg. on file at AHPP  
View from the west  
(western elevation door)



Feltigrew School  
Madison Co., Arkansas  
Photo by P. Zollner

Oct. 1994

Neg. on file at AHPP



Pettigrew School  
Madison Co., Arkansas  
Photo by P. Zollner  
Oct. 1994  
Neg. on file at AHPP  
View of interior from  
NE corner





Pettigrew School  
Madison Co., Arkansas  
Photo. by P. Zollner  
Oct. 1994  
Neg. on file at AHDP  
View of stove from  
the east



Pettigrew School

Madison Co., Arkansas

photo by P. Zollner

Oct. 1994

Neg. on file at AHPP

View from NW corner  
of interior



Pettigrew School  
Madison Co., Arkansas  
Photo by P. Zollner  
Oct. 1994  
Neg. on file at AHPP  
View of stage area from  
the west



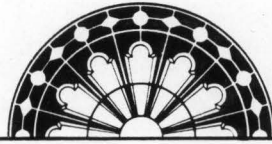
Pettigrew School  
Madison Co., Arkansas

photo. by P. Zollner

Oct. 1994

Neg. on file at AHPD  
View of windows from  
the east

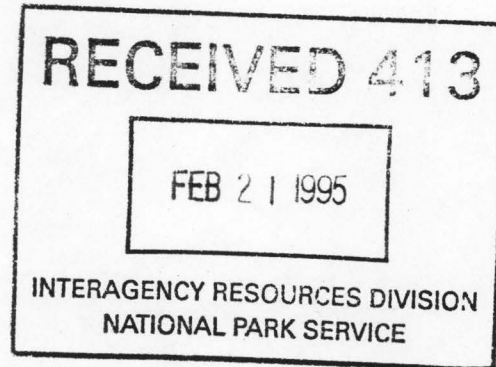




ARKANSAS  
HISTORIC  
PRESERVATION  
PROGRAM

February 7, 1995

Carol D. Shull  
Chief of Registration  
United State Department of the Interior  
National Register of Historic Places  
National Park Service  
800 North Capitol Street, Suite 250  
Washington, D.C. 20002



RE: Davis House  
Norfolk, Baxter County

Pettigrew School  
Pettigrew, Madison County

Dear Carol:

We are enclosing for your review the nomination of the above referenced properties. The Arkansas Historic Preservation Program has complied with all applicable nominating procedures and notification requirements in the nomination process.

Thank you for your consideration in this matter.

Sincerely,

Cathy Buford Slater  
State Historic Preservation Officer

CBS:br

Enclosures

