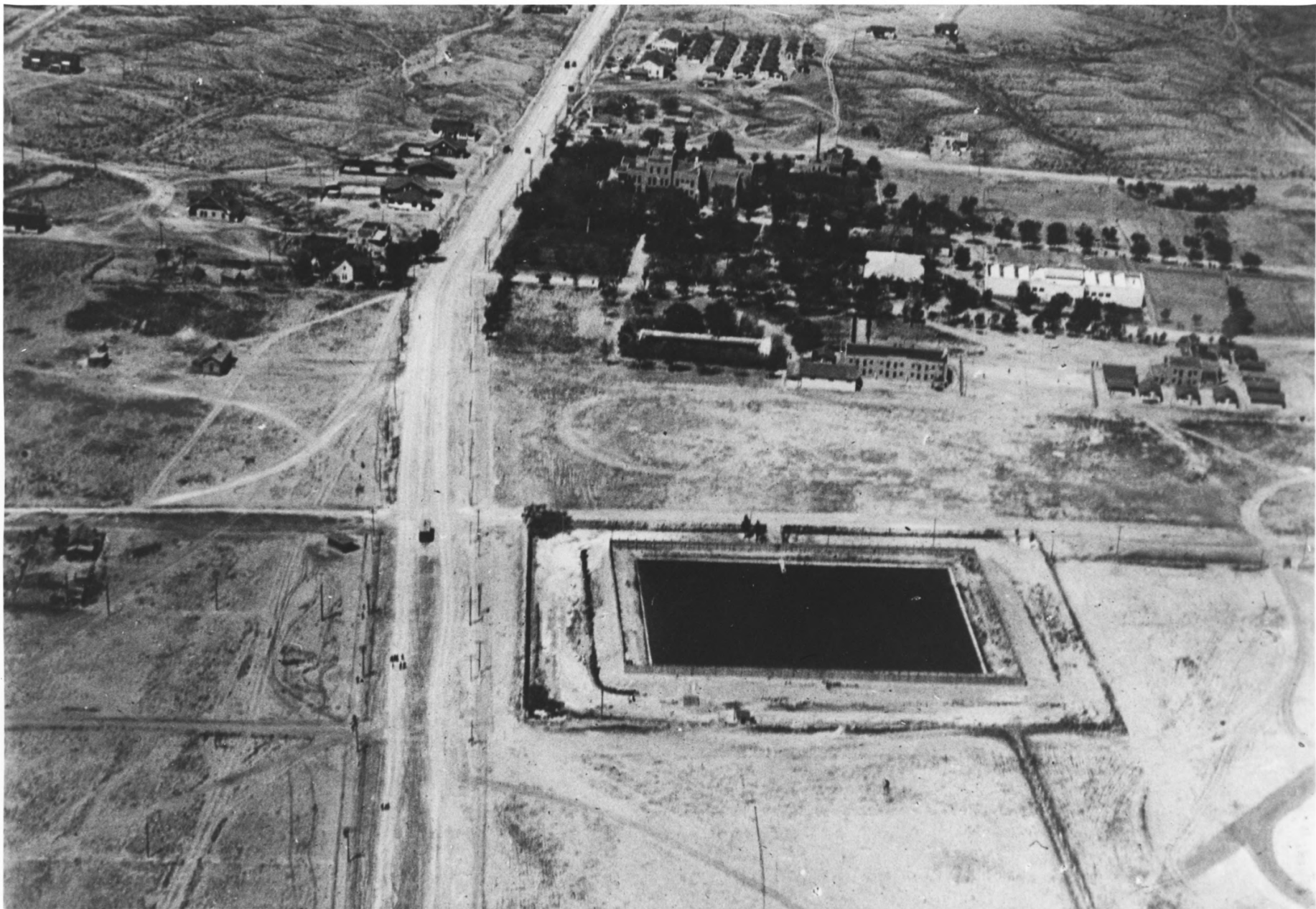




1340
B. HAWKS ©

Albuquerque
N.M.

1: Aerial View over
downtown and mesa toward
mountains; center, mid-
ground--Silver Hill
Historic District,
Albuq., N.M.; the Three
Hawks, 1931; Albuquerque
Museum; looking east.



2: Aerial Photo, UNM
campus; upper left--Silver
Hill Historic District,
Albuquerque, N.M.; 17-
photographer unknown, 1920*
~~24~~; Special Col., UNM; ↑
looking west.



3: Roosevelt Park under
construction; outside
Silver Hill Historic
District, Albuquerque,
N.M.; photographer unknown,
1933; Albuq. Museum;
looking south.



4: Roosevelt Park under
construction; in distance--
Silver Hill Historic
District, Albuquerque,
N.M.; photographer unknown,
1933; Albuq. Museum;
looking north.



5: Aerial Photo; middle
left--Silver Hill Historic
District, Albuquerque,
N.M.; ~~*Soil Con. Ser.~~, 1935;
Map Room, UNM; looking
down.

* King Survey (USGS)



6: Looking west on Silver
Avenue at Buena Vista;
Silver Hill Historic
District, Albuquerque,
N.M.; C. Wilson; 1985;
AHL.S.



7: Looking west at south
side of 1600 block of
Silver Avenue; Silver Hill
Historic District,
Albuquerque, N.M.; C.
Wilson; 1985; AHLS; cont.
structures (#s 425, 426).



1908

8: Looking west at north
side of 1900 block of
Silver Avenue; Silver Hill
Historic District,
Albuquerque, N.M.; C.
Wilson; 1985; AHLS; sig.
structure left (# 506).



9: Looking east on 2100
block of Silver Avenue;
Silver Hill Historic
District, Albuquerque,
N.M.; C. Wilson; 1985;
AHL.S.



10: #522; Duplex, 323/5
Terrace; Silver Hill
Historic District,
Albuquerque, N.M.; C.
Wilson; 1985; AHLS; looking
west; sig.



11: #s 88, 89; Veach
Houses, 1406 and 1408 Gold;
Silver Hill Historic
District, Albuquerque,
N.M.; C. Wilson; 1985;
AHLs; looking south; cont.



12: Looking east at north
side of 1900 block of Gold
Avenue; Silver Hill
Historic District,
Albuquerque, N.M.; C.
Wilson; 1985; AHLS; cont.
structures (#285).



13: #358; Klein House, 314
Sycamore; Silver Hill
Historic District,
Albuquerque, N.M.; C.
Wilson; 1985; AHLS; looking
southeast; sig.



14: #419; House, 1620

Silver; Silver Hill

Historic District,

Albuquerque, N.M.; C.

Wilson; 1985; AHLS; looking
south; sig.



15: #419; Detail of House,
1620 Silver; Silver Hill
Historic District,
Albuquerque, N.M.; C.
Wilson; 1985; AHLS; looking
up; sig.



16: #492; Phi Mu Sorority
House, 1917 Gold; Silver
Hill Historic District,
Albuquerque, N.M.; C.
Wilson; 1985; AHLS; looking
northwest; sig.



17: #81; Hogg House, 123
Maple; Silver Hill Historic
District, Albuquerque,
N.M.; C. Wilson; 1985;
AHLs; looking northwest;
sig.



NO
PARKING
ANY
TIME



18: #102; House, 1424

Silver; Silver Hill

Historic District,

Albuquerque, N.M.; C.

Wilson; 1985; AHLS; looking
southwest; sig.



19: #432; Leroy Peters
House, 1515 Silver; Silver
Hill Historic District,
Albuquerque, N.M.; C.
Wilson; 1985; AHLS; looking
north; sig.



20: #105; House, 1320

Silver; Silver Hill

Historic District,

Albuquerque, N.M.; C.

Wilson; 1985; AHLS; looking

southeast; sig.



21: #399; House, 1510
Gold; Silver Hill Historic
District, Albuquerque,
N.M.; C. Wilson; 1985;
AHLIS; looking southwest;
sig.



University Heights

22: #24; United Brethren
(Methodist) Church, 2210
Silver; Silver Hill
Historic District,
Albuquerque, N.M.;
photographer unknown, ca.
1930; Albuq. Museum;
looking southeast; sig.



23: #101; B.A. West House,
1423 Silver; Silver Hill
Historic District,
Albuquerque, N.M.; C.
Wilson; 1985; AHLS; looking
northwest; sig.



24: #525; Duplex, 318/20
Mesa; Silver Hill Historic
District, Albuquerque,
N.M.; C. Wilson; 1985;
AHLS; looking northeast;
sig.



25: #523; Duplex, 1915/17
Lead; Silver Hill Historic
District, Albuquerque,
N.M.; C. Wilson; 1985;
AHLs; looking north; sig.



26: #431; Clyde and Carrie
Tingley House, 1523 Silver;
Silver Hill Historic
District, Albuquerque,
N.M.; photographer unknown,
ca. 1930; AHLS; looking
northwest; sig.



27: #417; Kathryn Higgins
House, 1710 Silver; Silver
Hill Historic District,
Albuquerque, N.M.; C.
Wilson; 1985; AHLS; looking
north; sig.



28: #513; House, 2005

Silver; Silver Hill

Historic District,

Albuquerque, N.M.; C.

Wilson; 1985; AHLS; looking

north; cont.



29: #430; House, 1524

Silver; Silver Hill

Historic District,

Albuquerque, N.M.; C.

Wilson; 1985; AHLS; looking

southwest; sig.



30: #409; House, 1605
Gold; Silver Hill Historic
District, Albuquerque,
N.M.; C. Wilson; 1985;
AHLS; looking northwest;
cont.



31: #411; Kranscroft
Duplex, 1712/14 Gold;
Silver Hill Historic
District, Albuquerque,
N.M.; C. Wilson; 1985;
AHLS; looking southwest;
sig.



32: #415; House, 1707

Silver; Silver Hill

Historic District,

Albuquerque, N.M.; C.

Wilson; 1985; AHLS; looking

north; cont.



33: #424; House, 1607

Silver; Silver Hill

Historic District,

Albuquerque, N.M.; C.

Wilson; 1985; AHLS; looking

northwest; cont.



34: #542; House, 2111
Lead; Silver Hill Historic
District, Albuquerque,
N.M.; C. Wilson; 1985;
AHL5; looking northwest;
cont.



35: #591; Bessie Rumley
House, 2119 Silver; Silver
Hill Historic District,
Albuquerque, N.M.; C.
Wilson; 1985; AHLS; looking
north; cont.



36: #596; House, 2106

Silver; Silver Hill

Historic District,

Albuquerque, N.M.; C.

Wilson; 1985; AHLS; looking
south; cont.



37: #284; Duplex, 1704/06;
Silver Hill Historic
District, Albuquerque,
N.M.; C. Wilson; 1985;
AHL5; looking southwest;
cont.



MACHINISTS



38: #463; Emmanuel Baptist
Church (Machinists Hall),
315 Pine; Silver Hill
Historic District,
Albuquerque, N.M.; C.
Wilson; 1985; AHLS; looking
West; cont.



39: #303; House, 1810

Silver; Silver Hill

Historic District,

Albuquerque, N.M.; C.

Wilson; 1985; AHLS; looking

south; support.



BENSON BUILDS
THE BEST

40: #482; Tri-plex under
construction, 1816/18 Gold;
Silver Hill Historic
District, Albuquerque,
N.M.; Albuq. Prog. Mag.,
1938; Albuq. Museum;
looking south; support.



41: #s 482-4; Tri-plexes,
SW corner Gold and Mesa;
Silver Hill Historic
District, Albuquerque,
N.M.; C. Wilson; 1985;
AHLs; looking ; support.



42: #s 486, 487; Rumley
Duplexes, 1904-10 Gold;
Silver Hill Historic
District, Albuquerque,
N.M.; C. Wilson; 1985;
AHLs; looking ; cont.



43: #493; Apartments, NE
corner Gold and Mesa;
Silver Hill Historic
District, Albuquerque,
N.M.; C. Wilson; 1985;
AHL5; looking northeast;
support.



44: Looking west on 1200
block of Silver at Pres
Hospital; outside--Silver
Hill Historic District,
Albuquerque, N.M.; C.
Wilson; 1985; AHLS.



45: Casa La Paz
Apartments, 1706 Silver;
Silver Hill Historic
District, Albuquerque,
N.M.; C. Wilson; 1985;
AHL5; looking southwest;
non-cont.



46: #s 282, 283; Houses,
1801/05 Gold; Silver Hill
Historic District,
Albuquerque, N.M.; C.
Wilson; 1985; AHLS; looking
northwest; non-cont.