



ST. JAMES EPISCOPAL CHURCH
CUMBERLAND FURNACE, TENNESSEE

10/7

Dickson County, Tennessee

SEP 3 1976

PHOTO BY: Gail Hammerquist

AUG 22 1977

DATE: March 1976

NEG: Tennessee Historical Commission

Gable end wall and view of south elevation



ST. JAMES EPISCOPAL CHURCH
CUMBERLAND FURNACE, TENNESSEE

2 of 7

Dickson County, Tennessee

PHOTO BY: Gail Hammerquist

SEP 3 1976

DATE: March 1976

AUG 22 1977

NEG: Tennessee Historical Commission

Church and Cumberland Furnace School



ST. JAMES EPISCOPAL CHURCH
CUMBERLAND FURNACE, TENNESSEE

587

Dickson County, Tennessee

PHOTO BY: Gail Hammerquist
DATE: March 1976

SEP 3 1976

NEG: Tennessee Historical Commission

Main entrance

AUG 22 1977



AUG 22 1977

4077

ST. JAMES EPISCOPAL CHURCH
CUMBERLAND FURNACE, TENNESSEE

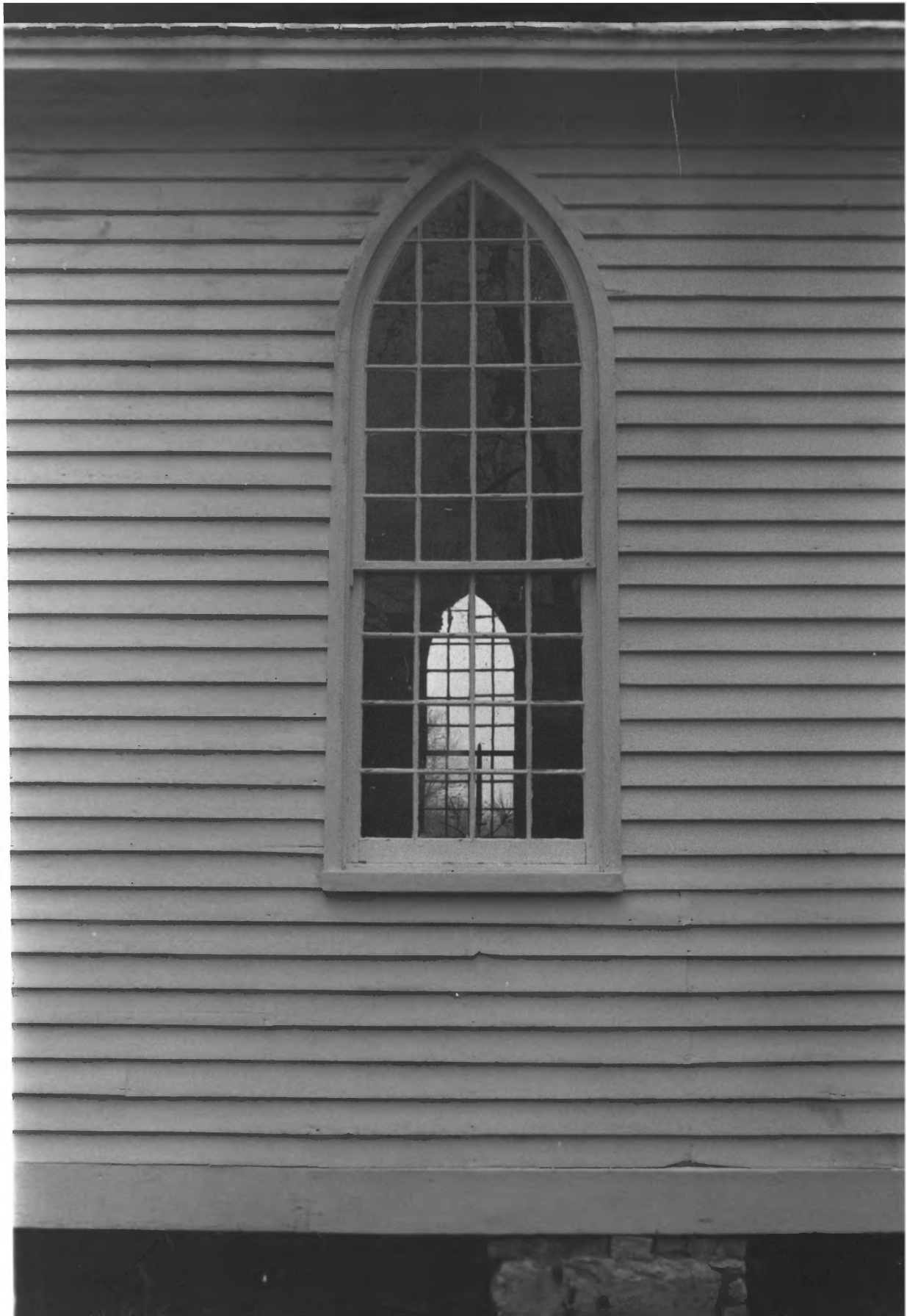
PHOTO BY: Gail Hammerquist SEP 3 1976

DATE: March 1976

NEG: Tennessee Historical Commission

Interior view

Pickson County, Tennessee



ST JAMES EPISCOPAL CHURCH
CUMBERLAND FURNACE, TENNESSEE

5079

PHOTO BY: Gail Hammerquist

SEP 3 1976

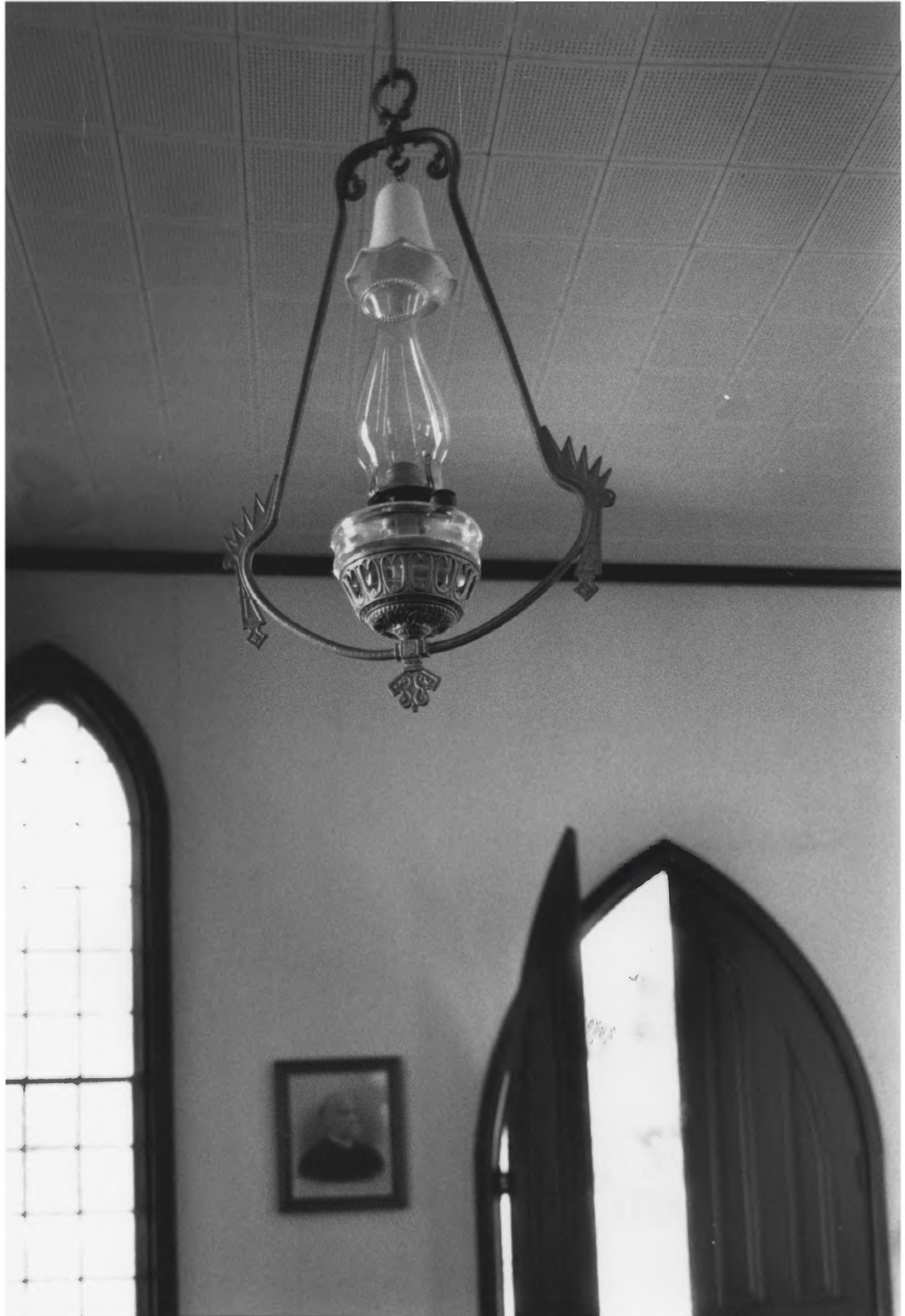
DATE: March 1976

NEG: Tennessee Historical Commission

Window detail

Dickson County, Tennessee

AUG 22 1977



ST. JAMES EPISCOPAL CHURCH
CUMBERLAND FURNACE, TENNESSEE

AUG 22 1977

PHOTO BY: Gail Hammerquist

SEP 3 1976
6 of 7

DATE: March 1976

NEG: Tennessee Historical Commission

Detail of original oil lamp

Dickson County, Tennessee



ST. JAMES EPISCOPAL CHURCH
CUMBERLAND FURNACE, TN

787

Dickson County, Tennessee

AUG 22 1977

PHOTO BY: Gail Hammerquist

DATE: April 1977

NEG: Tennessee Historical Commission

Cumberland Furnace schoolhouse from the
northeast, showing north and east
elevations