

United States Department of the Interior
National Park Service

RECEIVED
MAY 29 1990
NATIONAL REGISTER

National Register of Historic Places Registration Form

This form is for use in nominating or requesting determinations of eligibility for individual properties or districts. See instructions in *Guidelines for Completing National Register Forms* (National Register Bulletin 16). Complete each item by marking "x" in the appropriate box or by entering the requested information. If an item does not apply to the property being documented, enter "N/A" for "not applicable." For functions, styles, materials, and areas of significance, enter only the categories and subcategories listed in the instructions. For additional space use continuation sheets (Form 10-900a). Type all entries.

1. Name of Property

historic name Border City Mill #2
other names/site number _____

2. Location

street & number One Weaver Street N/A not for publication
city, town Fall River N/A vicinity
state Massachusetts code MA county Bristol code 005 zip code 02722

3. Classification

Ownership of Property	Category of Property	Number of Resources within Property	
<input checked="" type="checkbox"/> private	<input checked="" type="checkbox"/> building(s)	Contributing	Noncontributing
<input type="checkbox"/> public-local	<input type="checkbox"/> district	<u>1</u>	<u>0</u> buildings
<input type="checkbox"/> public-State	<input type="checkbox"/> site	_____	_____ sites
<input type="checkbox"/> public-Federal	<input type="checkbox"/> structure	_____	_____ structures
	<input type="checkbox"/> object	_____	_____ objects
		<u>1</u>	<u>0</u> Total

Name of related multiple property listing: Fall River MRA
Number of contributing resources previously listed in the National Register 0

4. State/Federal Agency Certification

As the designated authority under the National Historic Preservation Act of 1966, as amended, I hereby certify that this nomination request for determination of eligibility meets the documentation standards for registering properties in the National Register of Historic Places and meets the procedural and professional requirements set forth in 36 CFR Part 60. In my opinion, the property meets does not meet the National Register criteria. See continuation sheet.

Valerie Talmage
Signature of certifying official Executive Director, Massachusetts Historical State Historic Preservation Officer Date May 21, 1990 Commission;

State or Federal agency and bureau _____

In my opinion, the property meets does not meet the National Register criteria. See continuation sheet.

Signature of commenting or other official _____ Date _____

State or Federal agency and bureau _____

5. National Park Service Certification

I, hereby, certify that this property is:

entered in the National Register.
 See continuation sheet.

determined eligible for the National Register. See continuation sheet.

determined not eligible for the National Register.

removed from the National Register.

other, (explain): _____

for Signature of the Keeper Date of Action 6/25/90

Entered in the National Register

6. Function or Use

Historic Functions (enter categories from instructions)
 Industry/Manufacturing facility

Current Functions (enter categories from instructions)
 Domestic/Multiple dwelling

7. Description

Architectural Classification
 (enter categories from instructions)

Materials (enter categories from instructions)

Late Victorian/Italianate

foundation Granite
 walls Brick

roof Slate
 other Limestone, Cast iron, Wood

Describe present and historic physical appearance.

The Border City Mill #2, Fall River, Massachusetts, was constructed in 1873 after plans by Josiah Brown. It is the oldest and largest surviving structure within what was once the sprawling Border City Mill complex. The building incorporates many of the Italianate details common to mills in Fall River. Josiah Brown, said to be Fall River's first professional architect, is credited with the design of several other important Fall River buildings, including the Union and Robeson Mills and the First Baptist Church. The Robeson Mill, like the Border City Mill, is constructed of brick, a rarity in Fall River otherwise largely characterized by granite mill construction.

Located on the south bank of the Taunton River (now separated from it by Route 79), Mill #2 is the only one of three surviving masonry mill buildings to retain its original appearance. The main mill block has a very shallow dentilated and corbelled eave, relieved at each of the mid-points of the north and south sides of the east and west walls by small decorative pediments. While the five-story (plus basement) main block of Mill #2 measures 33 feet X 73 feet overall, a three-story (plus basement) former picker house wing of 45 feet X 75 feet extends to the rear or west just south of the midpoint of the main block. A two-story former boiler house measuring 50 feet X 75 feet overall, and also constructed of brick, is partially connected to the picker house wing at its southeast corner. The boiler house stack has been removed.

All three of these interconnected structures have shallow-pitched gable roofs. The main mill structure, laid in stretcher bond, rests on a high dressed granite base and contains pilastered and arcaded panel facades. A square eight-story campanile capped by an open belfry with a bell-cast or ogee roof projects from the front of the main block's east facade. This incorporates various decorative elements, including recessed panels, and a granite belt course and keystones at the uppermost section of the tower. The belfry contains paired round-head arches on each of its four sides and is unique to Fall River, with the only other example found on the tower of the Mechanic's Mill, demolished in the early 1980s. A large limestone tablet inscribed with the words "Border City Mills" is set into the front, or east face of the campanile above the fifth floor level, and a smaller one containing the date 1873 is located within the brickwork over the main entrance.

**United States Department of the Interior
National Park Service****National Register of Historic Places
Continuation Sheet**Section number 7 Page 1Border City Mill #2,
Fall River, Massachusetts

Fenestration consists of multi-light metal sash installed in 1988 as a replacement for a mixture of original and replacement wood sash too badly deteriorated for continued use in a residential context. The new sash match the muntin configuration of the original 12/12 sash, and bear a very close resemblance to their wood predecessors.

The remaining exterior element of significance, and again, unique to Fall River, is a series of six intact original decorative cast-iron fire escapes. These are situated two on each of the long facades, and one on each of the end walls of the main block. According to William Finch, who reported on the mill in a 1983 report, after a disastrous fire swept the Granite Mills in 1874, presumably with loss of life, fire escapes became common on Fall River mills. The Border City Mill #2 is the only mill in Fall River to have retained its fire escapes, and hence these are a more significant architectural feature to Fall River than they might be elsewhere. In addition however, the highly stylized nature of the mill's escapes imparts an additional artistic merit to them which is uncommon even to the larger region.

The interior of the mill has been completely retro-fitted for use as residential apartments, and contains no original fabric except exposed wood center posts on the basement level. A main stair within the bell tower was evaluated for structural integrity and possible reuse in connection with the mill's recent conversion to apartment use, and was found to be deficient to the point where the engineers recommended its immediate disassembly as a safety hazard. The stair tower space has been incorporated into the residential rehabilitation.

(continued)

**United States Department of the Interior
National Park Service****National Register of Historic Places
Continuation Sheet**Section number 7 Page 2Border City Mill #2,
Fall River, Massachusetts

Archaeological Description

While no prehistoric sites are currently recorded on the mill property, it is possible that sites are present. Two known prehistoric sites are recorded in the general area (within one mile). This factor and the close proximity of the property to the Taunton River and filled estuary indicates a reasonable potential for locating sites. Archaeological testing should be performed to determine the extent of disturbance and/or filling of the buried coastline from mill construction. There is also a potential for locating historic archaeological resources on the property. Background research and archaeological testing can determine if sub-surface survivals exist of structures no longer extant and contribute data pertaining to the layout of the entire complex. Engineering features may also be present below ground relating to early power or construction of the mills. Historic archaeological survivals may also exist in filled areas along the coast where barges, vessels or other culturally important fills (trash) may have been used as fill material.

(end)

8. Statement of Significance

Certifying official has considered the significance of this property in relation to other properties:

nationally statewide locally

Applicable National Register Criteria A B C D

Criteria Considerations (Exceptions) A B C D E F G

Areas of Significance (enter categories from instructions)

Architecture
Industry

Period of Significance

1873-1939

Significant Dates

N/A

Cultural Affiliation

N/A

Significant Person

N/A

Architect/Builder

Brown, Josiah

State significance of property, and justify criteria, criteria considerations, and areas and periods of significance noted above.

The oldest and largest surviving mill in the Border City Mill Complex (1872-1889), Mill #2 stands alone in a highly visible location along Route 79 in Fall River. The Border City Mill #2 meets Criteria A and C of the National Register of Historic Places on the local level as a good example of third quarter 19th century Italianate mill architecture with strong associations with the development of the textile industry in Fall River. It was designed by Josiah Brown, considered to have been Fall River's first professional architect.

In 1868, with the building of the Mechanicsville Mill on the Taunton River, the northern section of Fall River was opened to industrial expansion. The Weetamoe Mills followed in 1870, and in 1872, three companies (Border City, Sagamore, and Narragansett) began building. Located on the Taunton River at its junction with Mt. Hope Bay, these northern mills were the first industrial ventures not located on the Quequechan River.

According to 19th century history, Fall River and its industries (1879), "The site chosen had admirable facilities for the transaction of business, a good depth of water on the west, where a wharf was easily constructed for the reception of buildings material, coal, cotton, freight, etc., while on the east was the Old Colony Railroad, from which a spur was built directly past the doors of the mill to the wharf, and by which cloth and supplies could readily be shipped north and south." (p.144) The long distance overland to the sources of Fall River granite in comparison to the ease of transport of brick to the site by water, dictated the use of brick along the Taunton River.

"Border City" was the name that was often applied to Fall River because of its proximity to Rhode Island. The Border City Mills, organized in 1872 by George T. Hathaway, Esq., of Boston, with Mssrs. S. Angier Chace, Chester W. Green of Fall River, and James A. Hathaway, also of Boston, solicited subscriptions totalling one million dollars in capital. The stock was taken over by one hundred fifty subscribers. S. A. Chace was elected President, George T.

See continuation sheet

9. Major Bibliographical References

Previous documentation on file (NPS):

- preliminary determination of individual listing (36 CFR 67) has been requested
- previously listed in the National Register
- previously determined eligible by the National Register
- designated a National Historic Landmark
- recorded by Historic American Buildings Survey # _____
- recorded by Historic American Engineering Record # _____

See continuation sheet

Primary location of additional data:

- State historic preservation office
- Other State agency
- Federal agency
- Local government
- University
- Other

Specify repository:

Massachusetts Historical Commission

10. Geographical Data

Acreage of property Approximately 4 acres

UTM References

A

1	9	3	2	1	9	0	0	4	6	2	1	5	6	0
Zone			Easting					Northing						

C

--	--	--	--	--	--	--	--	--	--	--	--	--	--	--

B

Zone			Easting					Northing						

D

--	--	--	--	--	--	--	--	--	--	--	--	--	--	--

See continuation sheet

Verbal Boundary Description

Bounded on the north by Route 79 and the Taunton River; the east by North Main Street and the Penn. Central Railroad tracks; the south by Weaver Street and the west by vacant land and the Taunton River.

See continuation sheet

Boundary Justification

The boundaries are ones historically associated with Border City Mill #2.

See continuation sheet

11. Form Prepared By

name/title Frederick W. Lyman, Consultant w/ Betsy Friedberg, NR Director

organization Massachusetts Historical Commission date February 1, 1989

street & number 80 Boylston Street telephone (617) 727-8470

city or town Boston state MA zip code 02116

United States Department of the Interior
National Park ServiceNational Register of Historic Places
Continuation SheetSection number 8 Page 1Border City Mill #2,
Fall River, Massachusetts

Hathaway Treasurer, and James E. Cuneen was later named as Superintendent.

A mill was planned for some 75,000 spindles, and it was decided to handle this capacity in two mill buildings. Mill #1 was built in 1872-3, and Mill #2 in 1873. In 1877 Mill #1 burned and was being rebuilt in 1879 when the company experienced financial difficulties and passed into the hands of its creditors. It was reorganized as the Border City Manufacturing Co., with John S. Brayton as President and Edward L. Anthony as Treasurer, with additional capital of \$600,000. As a result, a third mill was built in 1888. The company produced print cloth 64 feet X 64 feet, and by 1901 also produced sheeting and shirting, and diversified to produce worsted goods and fancy cloth. Because the northern section was sparsely settled farmland, the company also subsequently constructed 158 multi-family tenements over a twenty block area.¹

The Border City Mills and its successor organization the Border City Manufacturing Company, came into being and operated during the principal years of Fall River's peak production of textiles. The location of the entire Border City Mills complex, now largely dismembered through demolition and highway construction, was one that had for years been an agricultural backwater, but was rapidly industrialized when the demand for Fall River's output exceeded its capacity along the Quequechan River. John Brayton and Edward Anthony are the two names principally associated with the zenith of Fall River's industrial strength, and undoubtedly their experience and genius turned the original mill complex into the profitable one it became under their leadership.

Mill #2 of the Border City Mills stands today as a sentinel landmark upon entering Fall River from the north toward Battleship Cove along recently completed Route 79. As such, it serves as a visual introduction to the textile heritage which built the City of Fall River, Massachusetts.

The #2 mill is of substantial historical importance to the city of Fall River as a virtually intact and isolated freestanding symbol of the great surge of industrial expansion that occurred in Fall River during the early 1870s.

(continued)

**United States Department of the Interior
National Park Service**

**National Register of Historic Places
Continuation Sheet**

Section number 8 **Page** 2

Border City Mill #2,
Fall River, Massachusetts

Archaeological Significance

Since patterns of prehistoric occupation in Fall River are poorly understood, any surviving sites would be significant. Sites in this area may be important in documenting changing sea level rise and its effects on Native American subsistence and settlement patterns. This type of locale, the mouth of a major riverine area on the coast has been suggested as a favored settlement location during later period of prehistory and during the Contact Period. Survivals may exist in the Border City Mill property to test this hypothesis.

Historic archaeological remains described above have the potential to contribute in a detailed reconstruction of Fall River's coastline and provide engineering data of early power use and construction/operation of the mill complex. Fill materials used along the coast can provide information on a variety of sources depending on the type of fills used. Maritime related fills can potentially provide data on vessels while domestic fill can provide social, economic and cultural data on individuals or persons associated with mill activities.

(end)

United States Department of the Interior
National Park ServiceNational Register of Historic Places
Continuation SheetSection number 9 Page 1Border City Mill #2,
Fall River, Massachusetts

Bibliography and/or References

- 1874 Barlow's Insurance Plans, Mill #2
1876 Barlow's Insurance Plans, Mill #1
1920 Corporate Mill Plans
Phillip's History of Fall River, Vol. II p. 129 (1945)
History of Bristol County p. 321-22 (1883)
J. Periera/P. Vielmetti, Fall River Office of Historic Preservation
Fall River and its Industries p. 143-144. (1879)
History of Fall River Fire Dept. p. 120 (1900)
Sylvia Chase Lintner, Mill Architecture in Fall River: 1865-1880, New England
Quarterly 21, June 1948, p. 185-203.
- Books and Articles.
- Boss, Judith A. Fall River, A Pictorial History. Norfolk/Virginia Beach,
VA: Donning Company Publishers.
- Burgy, J. Herbert. The New England Cotton Textile Industry, A Study in
Industrial Geography. Baltimore, 1932.
- Dunwell, Steve. The Run of the Mill. Boston, MA: David R. Godine,
Co., 1978.
- Fall River and Its Industries. p. 143-144, 1879.
- Fall River and its Manufactories. Benjamin Earl and Son, Fall
River, MA, 1878.
- Fenner Henry M. History of Fall River Massachusetts, Compiled for the Cotton
Centennial, Fall River Merchants Association, 1911.
- Finch, William B., and Preservation Technology Associates, expanded inventory
form for Border City Mill #2, May 30, 1986.
- History of Bristol County, p. 321-322, 1883.
- History of Fall River Fire Department. p. 120, 1900.
- Lintner, Sylvia Chase. "Mill Architecture in Fall River:
1865-1880." New England Quarterly 1, June 1948, p. 185-203.
- Phillip's History of Fall River, Vol. II, p. 129, 1945.
- Silvia, Philip T., Jr., editor. Fall River, 1886-1900, As viewed through its
newspaper accounts. Fall River, MA: R. E. Smith Printing Co., 1988.
- Smith, Thomas Russell. The Cotton Textile Industry of Fall River,
Massachusetts, A Study of Industrial Localization. New York: Kings Crown
Press, 1944.
- Maps and Site Plans.
- 1874 Barlow's Insurance Plans, Mill #2.
1920 Corporate Mill Plans.
1925 Insurance Map for Border City Mill No. 2.
1952 Insurance Map for Border City Mill Nos. 1, 2 and 3.

(end)

United States Department of the Interior
National Park Service

National Register of Historic Places
Inventory—Nomination Form

For NPS use only
received 1/5/83
date entered

Continuation sheet

Item number

Page 10 of 10

Multiple Resource Area
Thematic Group

Name Fall River Multiple Resource Area
State MA

Nomination/Type of Review

Date/Signature

91. Wyoming Mills

~~Substantive Review~~

~~Determined Eligible~~

Keeper

2/6/87 [Signature]

DOE/OWNER OBJECTION

Attest

92. Corky Row Historic District

Entered in the
National Register

for Keeper

[Signature] 6/23/82

Attest

93. Lower Highlands Historic District

Entered in the
National Register

Keeper

[Signature] 1/10/84

Attest

94. Bernard's Folly

~~Substantive Review~~

Keeper

Attest

95. Truesdale Hospital

~~Substantive Review~~

for Keeper

William B. Bush 4/15/81

Attest

[Signature] 4-15-81

96. Manley, William M., House

Entered in the
National Register

for Keeper

[Signature] 6/26/82

Attest

97. Sacred Heart School

Entered in the
National Register

for Keeper

[Signature] 3/9/81

Attest

98. ~~Border City Mill No. 2~~

Entered in the
National Register

Keeper

6/28/80

Attest

Keeper

Attest

Keeper

Attest

UNITED STATES DEPARTMENT OF THE INTERIOR
NATIONAL PARK SERVICE

NATIONAL REGISTER OF HISTORIC PLACES
EVALUATION/RETURN SHEET

REQUESTED ACTION: NOMINATION

PROPERTY NAME: Border City Mill No. 2

MULTIPLE NAME: Fall River MPS

STATE & COUNTY: MASSACHUSETTS, Bristol

DATE RECEIVED: 5/29/90 DATE OF PENDING LIST: 6/12/90
DATE OF 16TH DAY: 6/28/90 DATE OF 45TH DAY: 7/13/90
DATE OF WEEKLY LIST:

REFERENCE NUMBER: 90000999

NOMINATOR: STATE

REASONS FOR REVIEW:

APPEAL: N DATA PROBLEM: N LANDSCAPE: N LESS THAN 50 YEARS: N
OTHER: N PDIL: N PERIOD: N PROGRAM UNAPPROVED: N
REQUEST: N SAMPLE: N SLR DRAFT: N NATIONAL: N

COMMENT WAIVER: N

ACCEPT RETURN REJECT 6/28/90 DATE **Entered in the
National Register**

ABSTRACT/SUMMARY COMMENTS:

RECOM./CRITERIA _____
REVIEWER _____
DISCIPLINE _____
DATE _____

DOCUMENTATION see attached comments Y/N see attached SLR Y/N

CLASSIFICATION

___count ___resource type

STATE/FEDERAL AGENCY CERTIFICATION

FUNCTION

___historic ___current

DESCRIPTION

___architectural classification
___materials
___descriptive text

SIGNIFICANCE

Period Areas of Significance--Check and justify below

Specific dates Builder/Architect
Statement of Significance (in one paragraph)

___summary paragraph
___completeness
___clarity
___applicable criteria
___justification of areas checked
___relating significance to the resource
___context
___relationship of integrity to significance
___justification of exception
___other

BIBLIOGRAPHY

GEOGRAPHICAL DATA

___acreage ___verbal boundary description
___UTMs ___boundary justification

ACCOMPANYING DOCUMENTATION/PRESENTATION

___sketch maps ___USGS maps ___photographs ___presentation

OTHER COMMENTS

Questions concerning this nomination may be directed to

_____ Phone _____

Signed _____ Date _____



Border City #2: Basement level
— parking showing original column —
center line.

Fall River, MA
Border City Mill # 2



Border City#2: Typical end-stair.

Fall River, MA
Border City #2



Border City #2: north wall of
boiler house (front) and Picker-
house (rear).

Fall River MA
Border City Mill #2



Border City #2: west side of
complex as viewed from the west
along Route 79.

Fall River, MA
Border City Mill #2



— Border City #2: east facade
main building. —

Fall River, MA
Border City Mill #2 .



Border City #2: east wall of
main building and campanile.

Fall River, MA
Border City Mill #2



Border City #2: Main lobby at
— transition point between campan
— ile (foreground) and mill (rear).

Fall River, MA
Border City Mill #2



Border City #2: Boiler house interior, now swimming pool.

Fall River MA
Border City Mill #2



Border City #2: View of complex
- from the southwest showing boiler
house(left) and picker hse(middle

Fall River, MA
Border City Mill #2



Border City#2: east (left) and
north (right) walls of the
boiler house.

Fall River, MA
Border City Mill #2

SANBORN MAP

2



235

SUBJECT PROPERTY

FALL RIVER RIVER
TAUNTON EXPRESS
WESTERN

WEAVER

ALLEN GLENN S.A.

N. MAIN

O'SOL REALTY CO.

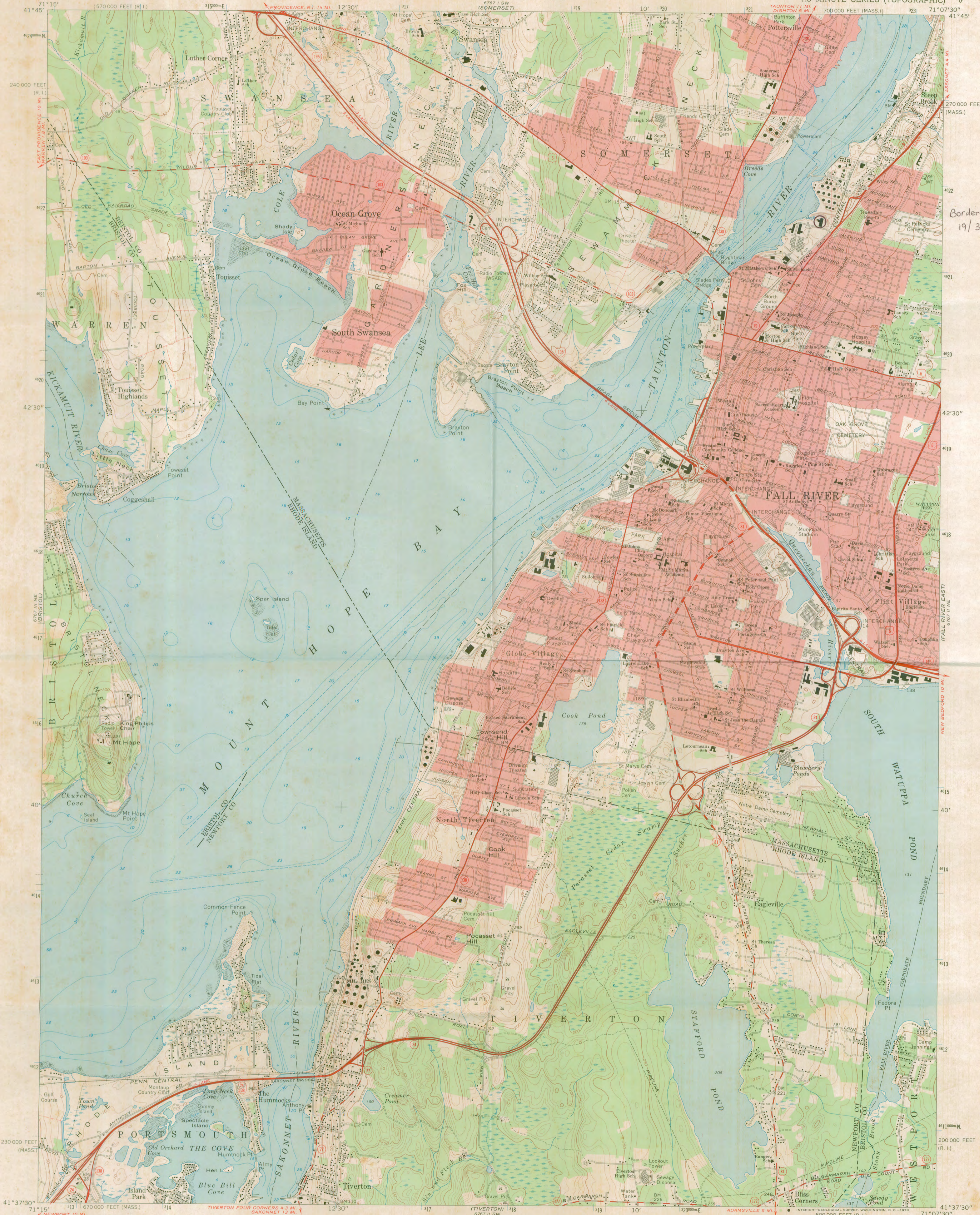
FURNE MFG
ASSOC RISK

TRINA INC.
MFG. LADIES TRAVEL EQUIP.
OFFSHORE STORAGE FOR AIRCRAFT PARTS
WASHERS & STYERS FOR SHIRTS, COATS, SUITERS
MILL & DRESS SHIRTS & SUITERS & COATS & SUITERS
MILL & DRESS SHIRTS & SUITERS & COATS & SUITERS
MILL & DRESS SHIRTS & SUITERS & COATS & SUITERS
MILL & DRESS SHIRTS & SUITERS & COATS & SUITERS

229

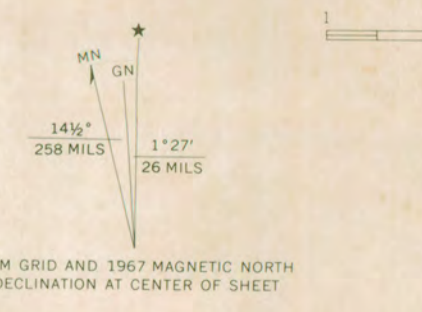
SCALE OF FEET
0 50 100 150 200

COPYRIGHT SANBORN MAP COMPANY, INC.



Border City Mill #2
19/321900/4621500

Mapped, edited, and published by the Geological Survey
Control by USGS, USC&GS, and Massachusetts Geodetic Survey
Topography by plane-table surveys 1938-1939. Revised from
aerial photographs taken 1966. Field checked 1967
Selected hydrographic data compiled from USC&GS Charts 350 (1966)
and 353 (1967). This information is not intended for navigational purposes
Polyconic projection. 1927 North American datum
10,000-foot grids based on Massachusetts coordinate system,
mainland zone, and Rhode Island coordinate system
1000-meter Universal Transverse Mercator grid ticks, zone 19,
shown in blue
Fine red dashed lines indicate selected fence and field lines where
generally visible on aerial photographs. This information is un-checked
Red tint indicates areas in which only landmark buildings are shown
Boundaries in tidal water as in Massachusetts from information furnished
by Massachusetts Department of Public Works



UTM GRID AND 1967 MAGNETIC NORTH
DECLINATION AT CENTER OF SHEET
14° 28' 28" M
1° 27' 26" N

ROAD CLASSIFICATION
Primary highway, all weather, hard surface
Secondary highway, all weather, hard surface
Light-duty road, all weather, improved surface
Unimproved road, fair or dry weather
Interstate Route U. S. Route State Route

THIS MAP COMPLIES WITH NATIONAL MAP ACCURACY STANDARDS
FOR SALE BY U. S. GEOLOGICAL SURVEY, WASHINGTON, D. C. 20242
A FOLDER DESCRIBING TOPOGRAPHIC MAPS AND SYMBOLS IS AVAILABLE ON REQUEST

FALL RIVER, MASS.—R.I.
N4137.5—W7107.5/7.5
1967
AMS 6767 II NW—SERIES V814

LEGEND:

- M.H.B. MASS. HIGHWAY BOUND
- S.B. STONE BOUND
- S.M.H. SEWER MANHOLE
- D.H. DRILL HOLE
- UTILITY POLE
- O.E. OVERHEAD ELECTRIC
- ⊕ HYDRANT
- C.L.F. CHAIN LINK FENCE
- GUY WIRE
- C.B.D.I. CATCH BASIN DROP INLET

I hereby certify to the best of my information, knowledge and belief to the Commonwealth Land Title Insurance Company that this survey was actually made on the ground, is correct according to the record descriptions of all premises, that there are no other visible easements or rights of way which have been found on the premises or of which the undersigned has been advised, no party walls, no encroachments on adjoining premises and no encroachments either way across boundary lines, streets or alleys, except as shown, and that the subject premises are located in Zone "B" & "C" as shown on the national flood insurance program maps, community-panel number 250055 0014 D effective date January 5, 1984. Zone "B" on this community panel is described as: "Areas between limits of the 100-year flood and 500-year flood; or certain areas subject to 100-year flooding with average depths less than one (1) foot or where the contributing drainage area is less than one square mile; or areas protected by levees from the base flood," and Zone "C" is described as "Areas with minimal flooding".

Date June 12, 1986
Richard A. Munroe
 Registered Professional Land Surveyor

CHAPTER 380 ACTS OF 1966
 "I hereby certify that the property lines shown on this plan are the lines dividing existing ownerships, and the lines of the streets and ways shown are those of public or private streets or ways already established, and that no new lines for division of existing ownership or for new ways are shown."

Date 4/9/86
Richard A. Munroe
 Registered Professional Land Surveyor

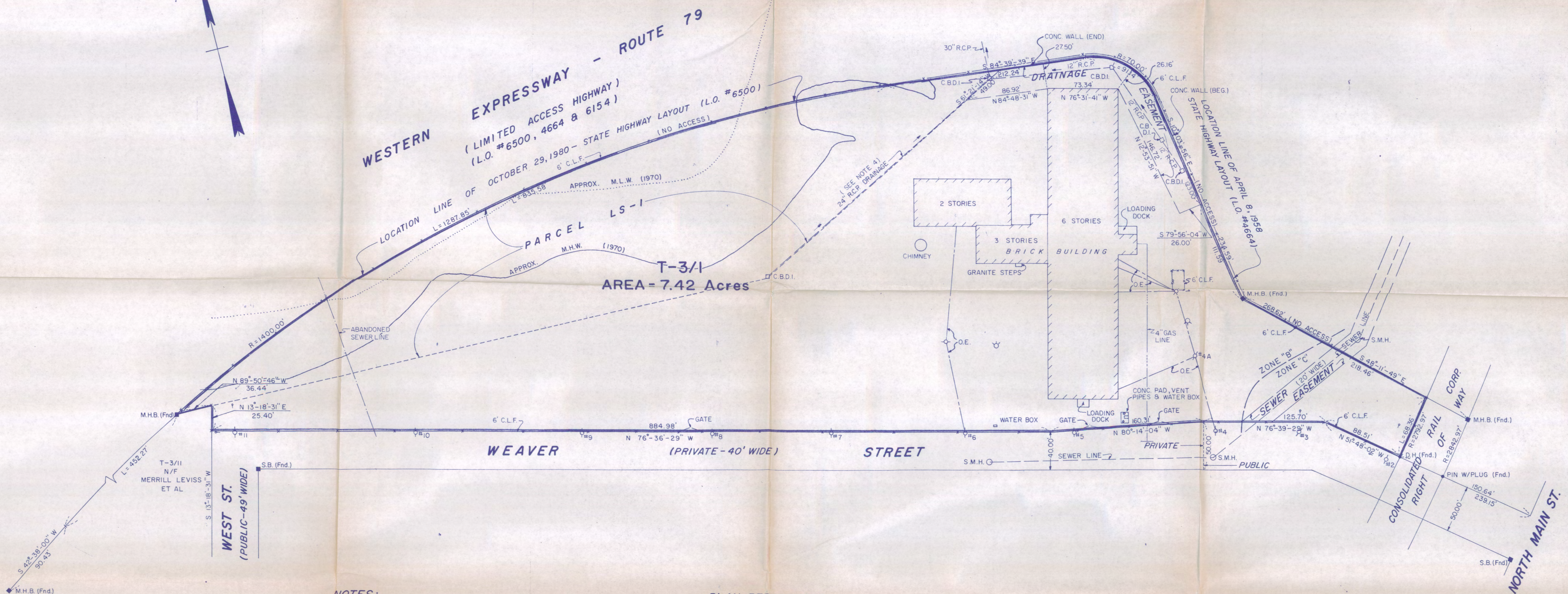
THIS SURVEY AND PLAN WERE PREPARED IN ACCORDANCE WITH THE PROCEDURAL AND TECHNICAL STANDARDS FOR THE PRACTICE OF LAND SURVEYING IN THE COMMONWEALTH OF MASSACHUSETTS.

Date 4/9/86
Richard A. Munroe
 Registered Professional Land Surveyor



WESTERN EXPRESSWAY - ROUTE 79
 (LIMITED ACCESS HIGHWAY)
 (L.O. #6500, 4664 & 6154)
 LOCATION LINE OF OCTOBER 29, 1980 - STATE HIGHWAY LAYOUT (L.O. #6500)
 (NO ACCESS)

PARCEL LS-1
 T-3/1
 AREA = 7.42 Acres



NOTES:

- 1) BEARING SYSTEM IS BASED ON STATE HIGHWAY L.O. #4664 OF ROUTE 79 WESTERN EXPRESSWAY.
- 2) T-3/1 REFERS TO LOT NO. 1 OF FALL RIVER ASSESSOR'S MAP NO. T-3.
- 3) PLANS REFERENCED ARE RECORDED IN THE BRISTOL COUNTY REGISTRY OF DEEDS, FALL RIVER DISTRICT.
- 4) SEE LAND RECORDS BOOK 1592, PAGE 152 AT BRISTOL COUNTY REGISTRY OF DEEDS WHICH STATES THAT PAROMA DRAPERIES, INC. ASSUMES OWNERSHIP CONTROL AND MAINTENANCE OF THE DRAINAGE SYSTEM & DRAIN LINES WITHIN PARCEL LS-1 CONVEYED TO PAROMA DRAPERIES, INC. BY THIS INSTRUMENT.
- 5) ELECTRIC LINES ON UTILITY POLES ALONG THE NORTH SIDELINE OF WEAVER STREET ENCRUCH UPON THE SUBJECT PREMISES IN SEVERAL LOCATIONS.
- 6) ZONE B & ZONE C AS SHOWN ON THE NATIONAL FLOOD INSURANCE PROGRAM MAPS, COMMUNITY-PANEL NUMBER 250055 0014D, EFFECTIVE DATE JANUARY 5, 1984.
- 7) THERE ARE SEVERAL UTILITY POLE GUY WIRES WHICH ENCRUCH UPON THE SUBJECT PREMISES.

PLAN REFERENCES:

PLAN BOOK	PAGE
2	41
30	46
33	29
42	16
47	61
53	27
58	48
68	76

PLAN OF LAND
 IN
FALL RIVER, MA.
 SURVEYED FOR
BORDER CITY LIMITED PARTNERSHIP
 SCALE: 1" = 50' JUNE 9, 1986





RECEIVED
MAY 29 1990
NATIONAL
REGISTER

May 14, 1990

Carol Shull
National Register of Historic Places
Department of the Interior
National Park Service
P.O. Box 37127
Washington, DC 20013-7127

Dear Ms. Shull:

Enclosed please find the following nomination:

Border City Mill #2, One Weaver Street, Fall River (Bristol County),
Massachusetts, 02722.

There has been no owner objection for the property listed above.

The nomination has been voted eligible by the State Review Board and has been signed by the State Historic Preservation Officer. Owners were notified of pending State Review Board consideration 30-75 days before the meeting and were afforded the opportunity to comment. Comments received to date are attached to the nomination form.

Sincerely,

Betsy Friedberg

Betsy Friedberg
National Register Director
Massachusetts Historical Commission

Enclosure: