

RANGE 3 WEST

RANGE 2 WEST

RANGE 1 WEST

MAP OF BUTTEVILLE MARION CO. OREGON 1876.

SCALE 500 FEET TO AN INCH.

- REFERENCES
- 1 Episcopal Church
 - 2 Public School
 - 3 Masonic Hall & Odd Fellows Hall
 - 4 Hotel
 - 5 Storage Hall
 - 6 Storage Bakery
 - 7 Gas Engine Workshop



MAP OF AURORA MARION CO. OREGON 1876.

SCALE 500 FEET TO AN INCH.

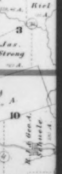
- REFERENCES
- 1 Public School
 - 2 First Office
 - 3 Second Office



MAP OF WAGON MARION CO. OREGON 1876.

SCALE 500 FEET TO AN INCH.

- REFERENCES
- 1 Episcopal Church
 - 2 Public School
 - 3 Masonic Hall & Odd Fellows Hall
 - 4 Hotel
 - 5 Storage Hall
 - 6 Storage Bakery
 - 7 Gas Engine Workshop



TOWN 5 SOUTH

RANGE 3 WEST

RANGE 1 WEST

St. Paul Historic District

St. Paul, OR *Marion County*

Oregon Historical Society photo ¹⁹⁸⁰

1230 SW Park

Portland, OR 97205

Negative at same

1 of 69

Location of St. Paul on the
French Prairie, from the Illus-
trated Atlas of Marion & Linn
Counties, 1878.

St. Paul Historic District

St. Paul, OR *WAGON MOUNTAIN COUNTY*

James Hamrick photo, 1980

1829 NW Lovejoy, #505

Portland, OR 97209

Negative at same

2 of 69

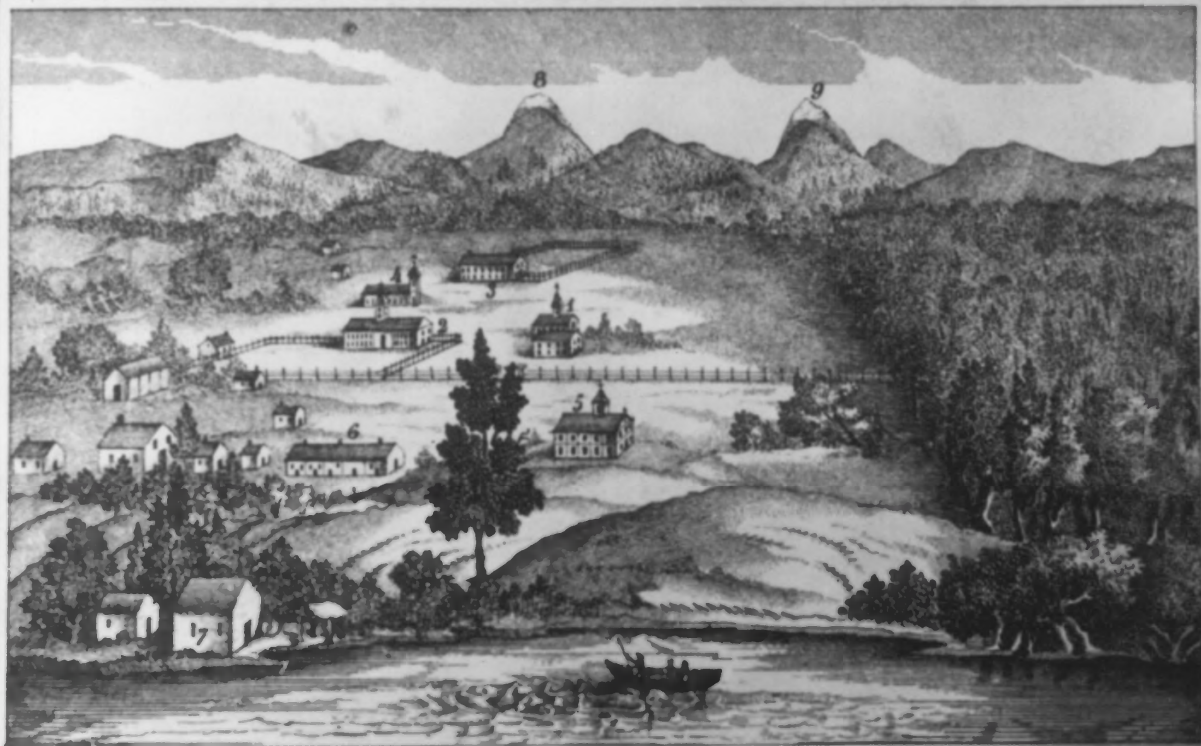
Detail of St. Paul from the
Illustrated Atlas, showing
plat, which is basically un-
changed today.



St. Paul Historic District
St. Paul. OR *WAGON COUNTY*
Oregon Historical Society photo
1230 SW Park 1980
Portland, OR 97205
Negative at same

3 of 69

Paul Kane watercolor of St. Paul Mission, 1847, showing church, convent, school & chapel, and perhaps St. Joseph's College on the extreme right. Courtesy Royal Ontario Museum, Toronto.



F. Van der Steen.

Lith. de V. Vander Schelden.

MISSION S^t PAUL À WALLAMET. Lettres I et XVIII.

- | | | |
|--|--|----------------------|
| 1. Cathédrale et maison de l'Archevêque. | 4. Ancienne église. | 7. Forge. |
| 2. Couvent des Sœurs de Notre Dame. | 5. Résidence S ^t . François-Xavier. | 8. Montagne Hood. |
| 3. Collège S ^t Joseph. | 6. Fermes etc. | 9. Montagne Moléris. |

St. Paul Historic District
St. Paul, Marion County
Oregon

4 of 69

St. Paul Mission Historical
Society, P.O. Box 158
St. Paul, OR 97137

Copy negative at same

"Mission St. Paul à Wallamet," 3. St. Joseph College
1847, from representation by 4. Old Church
P. Vande Steene, Lithograph by 5. St. Francis Xavier Resi-
Ve. Vander Schelden. Of bldgs. dence Hall
shown, only church stands today. 6. Barns, etc.

Key to figures:

- | | |
|---|--------------------|
| 1. Cathedral and priest's residence. | 7. Forge |
| 2. Convent of the Sisters of Notre Dame | 8. Mt. Hood |
| | 9. Mt. Molalla (?) |



St. Paul Historic District
St. Paul, Marion County
Oregon

5 of 69

Looking E/SE on Church Street
toward New Cemetery. Entrance
on north side of road is mar-
ked by cypress (?) hedge and
iron gate. *SAA INVENTORY #1*

Elisabeth Potter photo
February 13, 1981
SHPO
Salem, OR 97310



ST. PAUL'S
CEMETERY

St. Paul Historic District

St. Paul, OR *WAGON COUNTRY*

James Hamrick photo, 1980

1829 NW Lovejoy, #505

Portland, OR 97209

Negative at 525 Trade St. SE

Salem, OR 97310

6 of 69

Entrance facing north to the
New Cemetery (1875)

INVENTORY #1



St. Paul Historic District

St. Paul, OR *MANION COUNTY*

Unknown photographer, 1939

Courtesy Oregon Historical Society
1230 SW Park, Portland, OR 97205

Negative at same *INVENTORY # 1*

7 of 69

WPA photo of the cemetery grounds facing Northwest. Large cross signifies grave of Archbishop Blanchet, who died in 1883. Blanchet's brother and his Assistant, Rev. Modeste Demers are interred at the same site.



St. Paul Historic District

St. Paul, OR

MANION COUNTY

James Hamrick photo 9/1980

1829 NW Lovejoy, #505

Portland, OR 97209

Negative at 525 Trade St., SE
Salem, OR 97310

8 of 69

INVENTORY #1

Contemporary view of cemetery from
the southeast. Gravestones of Arch
bishop Blanchet, his brother, and
Rev. Modeste Demers have be repla-
ced.



St. Paul Historic District

St. Paul, OR *MARION COUNTY*

Unknown photographer, n.d.

Courtesy Joe McKay

242 NE Main, St. Paul, OR 97137

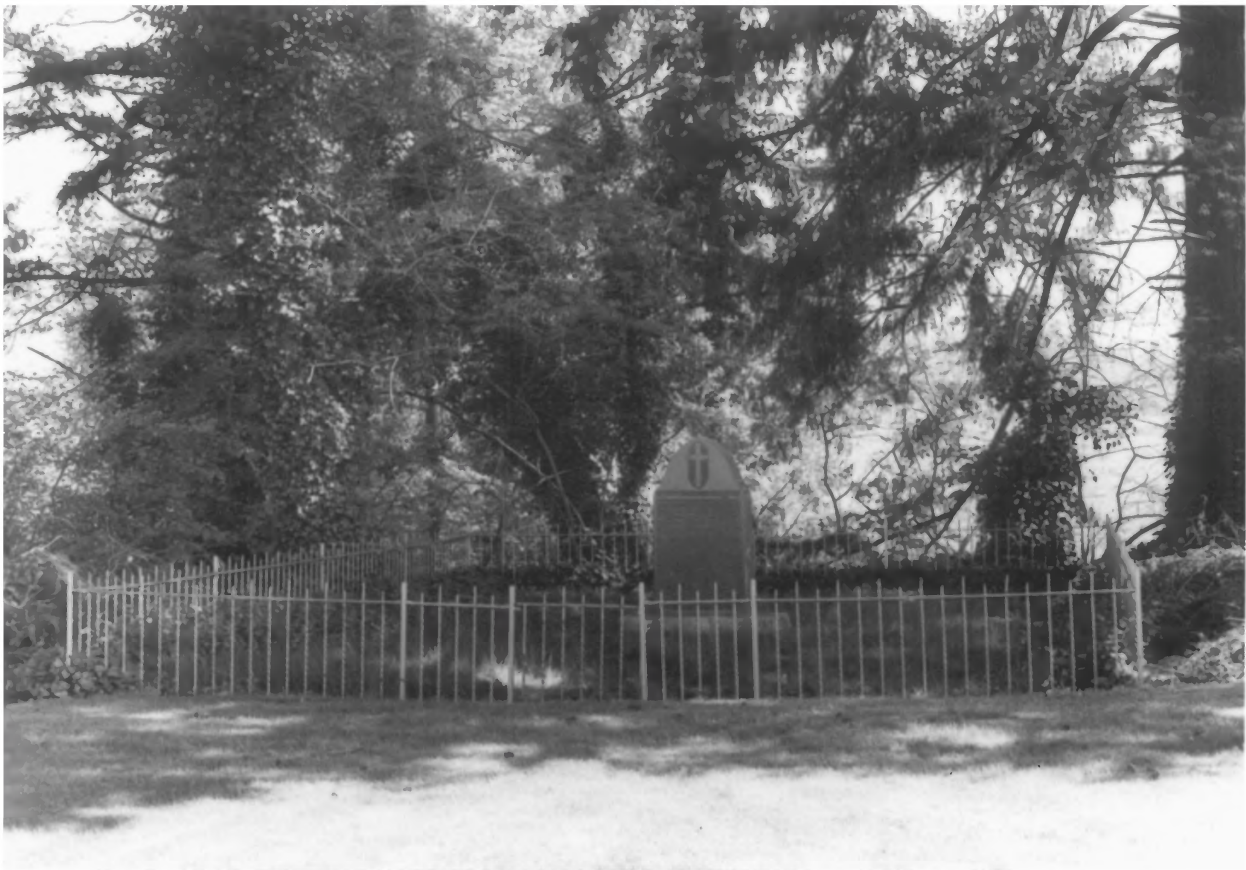
Negative at same

9 of 69

South elevation, Mortuary chapel

Sisters of the Holy Names, destroyed 1937. Built c. 1875

(INVENTORY # 1)



St. Paul Historic District

St. Paul, OR *MARION COUNTY*

James Hamrick photo, 1980

1829 NW Lovejoy, #505

Portland, OR 97209

Negative at 525 Trade St., SE
Salem, OR 97310

10 of 69

INVENTORY #1

View from the south of the site
of the Mortuary Chapel (1875-1937)
Marker erected by the Sisters of
the Holy Names, inscribed with the
names of nuns buried there.



St. Paul Historic District

St. Paul, OR *MARION COUNTY*

James Hamrick photo, 1980

1829 NW Lovejoy, #505
Portland, OR 97209

Negative at 525 Trade St., SE

Salem, OR 97310

11 of 69

View west towards St. Paul Catholi
c Church from the New Cemetery.
Road is the original east/west axis



St. Paul Historic District

St. Paul, OR *MANION COUNTY*

James Hamrick photo, 1980

1829 NW Lovejoy, #505
Portland, OR 97209

Negative at 525 Trade St., SE

Salem, OR 97310

12 of 69

Ferschweiler House, c.1910

View from the southwest

INVENTORY # 9



St. Paul Historic District

St. Paul, OR *WAGON COUNTY*

James Hamrick photo, 1980

1829 NW Lovejoy, #505

Portland, OR 97209

Negative at 525 Trade St., SE

Salem, OR 97310

13 of 69

Kirsch House, 1918

Northeast elevation

INVENTORY # 11



St. Paul Historic District

St. Paul, OR *WAGON COUNTRY*

James Hamrick photo, 1980

1829 NW Lovejoy, #505

Portland, OR 97209

Negative at 525 Trade St., SE

Salem, OR 97310

14 of 69

North elevation, Smith House
(1913)

INVENTORY # 16



St. Paul Historic District
St. Paul, OR *MANION COUNTY*

James Hamrick photo, 1980
1829 NW Lovejoy, #505
Portland, Or 97209

Negative at 525 Trade St. SE
Salem, OR 97310

15 of 69 *INVENTORY # 19*

Northwest elevation, old St. Paul
City Hall, c. 1875,

Currently used for storage,
porch lost but most detailing in-
tact.



St. Paul Historic District

St. Paul, OR *MAHON COUNTY*

James Hamrick photo, 1980

1829 NW Lovejoy, #505

Portland, OR 97209

Negative at 525 Trade St., SE

Salem, OR 97310

16 of 69 *INVENTORY # 19*

Southwest elevation, old St. Paul
City Hall. Most windows boarded
up, glass broken. Foundation
replaced.



St. Paul Historic District

St. Paul, OR *MANION COUNTY*

James Hamrick photo, 1980

1829 NW Lovejoy, #505

Portland, OR 97209

Negative at 525 Trade St., SE

Salem, OR 97310

17 of 69

Southeast elevation, Emmet Kirk
House, now St. Paul Mission:
Historical Society, 1890

INVENTORY # 28



St. Paul Historic District
St. Paul, OR *WAGON COUNTY*
Unknown photographer, 1891
Courtesy Joe McKay
242 NE Main, St. Paul, OR 97137
Negative at same

18 of 69

FEB 8 1892
Southeast elevation, Emmet Kirk
House, 1890. Moved to the northeast
1976. New orientation same as ori-
ginal. *INVANTON # 28*

*Emmet Kirk was Postmaster Feb. 23, 1887 to Dec 28, 1899. The Post office was in the store at left.
House built in 1890 picture 1899 - left to right Marie Galloway, Cy McDonald, Agatha (McDonald) Kirk, Emmet Kirk
holding son Loren Kirk.*



St. Paul Historic District
St. Paul, OR *Wagon County*
James Hamrick, photo, 1980
1829 NW Lovejoy, #505
Portland, OR 97209

Negative at 525 Trade ST. SE
Salem, OR, 97310

19 of 69

Northern edge of district boundary
looking south along main north/
south axis through St. Paul.
Church steeple appears at the
extreme right.



St. Paul Historic District
St. Paul, OR *MARION COUNTY*
James Hamrick photo, 1980
1829 NW Lovejoy, #505
Portland, Or 97209

Negative at 525 Trade St., SE
Salem, OR 97310

20 of 69 *INVENTORY # 30*

Southwest elevation of
Grossenbacher House, c. 1880
Large trees prevent a
full view of the T-shaped house.



St. Paul Historic District
St. Paul, OR *MANION COUNTY*
James Hamrick photo, 1980
1829 NW Lovejoy, #505
Portland, OR 97209

Negative at 525 Trade St., SE

Salem, OR 97310

21 of 69 *INVENTORY # 32*

Northeast elevation, McKillip
House, c.1890. Shows remodeling
and window replacement on the
lower floor. Also addition of
asbestos shingle.



St. Paul Historic District

St. Paul, OR *MANION COUNTY*

James Hamrick photo, 1980

1829 NW Lovejoy, #505

Portland, OR 97209

Negative at 525 Trade St., SE

Salem, OR 97310

22 of 69 *INVENTORY # 34*

Southwest elevation, Manegre

House, c. 1890.

Shows additions to the rear, in-

cluding fireplace and asbestos
shingles.



St. Paul Historic District

St. Paul, OR *MANION COUNTY*

James Hamrick photo, 1980

1829 NW Lovejoy, #505

Portland, OR 97209

Negative at 525 Trade St., SE

Salem, OR 97310

23 of 69

East elevation, Manegre House

INVENTORY # 34



IN MEMORY OF
THE SAKO FIFTHS OF CALLED
WHOSE IN THE GARDEN
MILITARY
JOSHUA SAKO 1770-1810
ANNE CALLED 1770-1810
THOMAS SAKO 1770-1810
JOHN LA SAKO 1770-1810
MICHAEL LA SAKO 1770-1810
THOMAS LA SAKO 1770-1810
ANNE SAKO 1770-1810
ANNE SAKO 1770-1810
ANNE SAKO 1770-1810
ANNE SAKO 1770-1810

St. Paul Historic District

St. Paul, OR *MANION COUNTY*

James Hamrick photo, 1980

1829 NW Lovejoy, #505

Portland, OR 97209

Negative at 525 Trade St., SE

Salem, OR 97310

24 of 69 INVENTORY # 36

View of commemorative stone & plaque to the early settlers of the area who were buried in the Old Cemetery, located on the western edge of the property.



St. Paul Historic District,
St. Paul, OR *MANION COUNTY*

James Hamrick photo, 1980

1829 NW Lovejoy, #505

Portland, OR 97209

Negative at 525 Trade St., SE

Salem, OR 97310

25 of 69 *INVENTORY # 36*

View east from Old Cemetery, 1839

Crucifix erected 1939 at
St. Paul's Centenary celebration
St. Joseph's archaeological site
in the background.



St. Paul Historic District

St. Paul, OR *MANION COUNTY*

James Hamrick photo, 1980

1829 NW Lovejoy, #505

Portland, OR 97209

Negative at 525 Trade St., SE

Salem, Or 97310

26 of 69

View from the Northwest of the
St. Joseph's College archaeological
site, 1841

INVENTORY # 29



St. Paul Historic District

St. Paul, OR *MANION COUNTY*

James Hamrick photo, 1980

1829 NW Lovejoy, #505

Portland, OR 97209

Negative at 525 Trade St., SE

Salem, OR 97310

27 of 69 *INVENTORY # 29*

Southwest view from Old Cemetery
looking towards the archaeological
of the original log church (site
1836 in the vicinity or to the
right of the barn.



St. Paul Historic District

St. Paul, OR *MANION COUNTY*

James Hamrick photo, 1980

1829 NW Lovejoy, #505

Portland, OR 97209

Negative at 525 Trade St., SE

Salem, OR 97310

28 of 69 *INVARIANT # 37*

West elevation, St. Paul Knights
of Columbus Hall, formerly St.
Paul Creamery, 1914-15
Roof originally flat. Altered
wall for large picture window &
entrance.



St. Paul Historic District
St. Paul, OR

James Hamrick photo, 1980
1829 NW Lovejoy, #505
Portland, OR 97209

Negative at 525 Trade St. SE

Salem, OR 97310

29 of 69

~~Northeast view of~~ ^{LOOKING SOUTH ON} Main Street,
St. Paul, 1980. The St. Paul
Catholic Church, is one block to
the right (west). FROM MISSION
AVENUE



ST. PAUL, OREGON.

St. Paul Historic District
St. Paul, OR

Unknown photographer, c.1910

Courtesy Joe McKay

242 NE Main, St. Paul, OR 97137

Negative at same

30 of 69

View towards the south ~~from~~ (ALONG)
Main Street, c. 1910. FROM MISSION
AVENUE



St. Paul Historic District
St. Paul, OR

James Hamrick photo, 1980
1829 NW Lovejoy, #505
Portland, OR 97209

Negative at 525 Trade St., SE
Salem, OR 97310

31 of 69

West elevation, Martel House,
c. 1880 . Formerly St. Paul
Hotel.

INVENTORY # 24

HOTEL



St. Paul Historic District
St. Paul, OR

Unknown photographer, c.1890
Courtesy Joe McKay
242 NE Main, St. Paul 97137

No negative

32 of 69

West elevation of the St. Paul
Hotel, c.1890

INVENTORY # 24



St. Paul Historic District
St. Paul, Or

Unknown photographer, c. 1900
Courtesy Joe Mckay
242 NE Main, St. Paul OR 97137
Negative at same

33 of 69

West elevation, St. Paul Hotel,
c. 1900.

Inventory # 24



St. Paul Historic District
St. Paul, OR

James Hamrick photo, 1980
1829 NW Lovejoy, #505
Portland, OR 97209

Negative at 525 Trade St., SE

Salem, OR 97310

34 of 69

West elevation, Coleman House,
c.1920

INVANTON 7 H 61



St. Paul Historic District
St. Paul, OR

James Hamrick photo, 1980
1829 NW Lovejoy, #505
Portland, OR 97209

Negative at 525 Trade St., SE

Salem, OR 97310

35 of 69

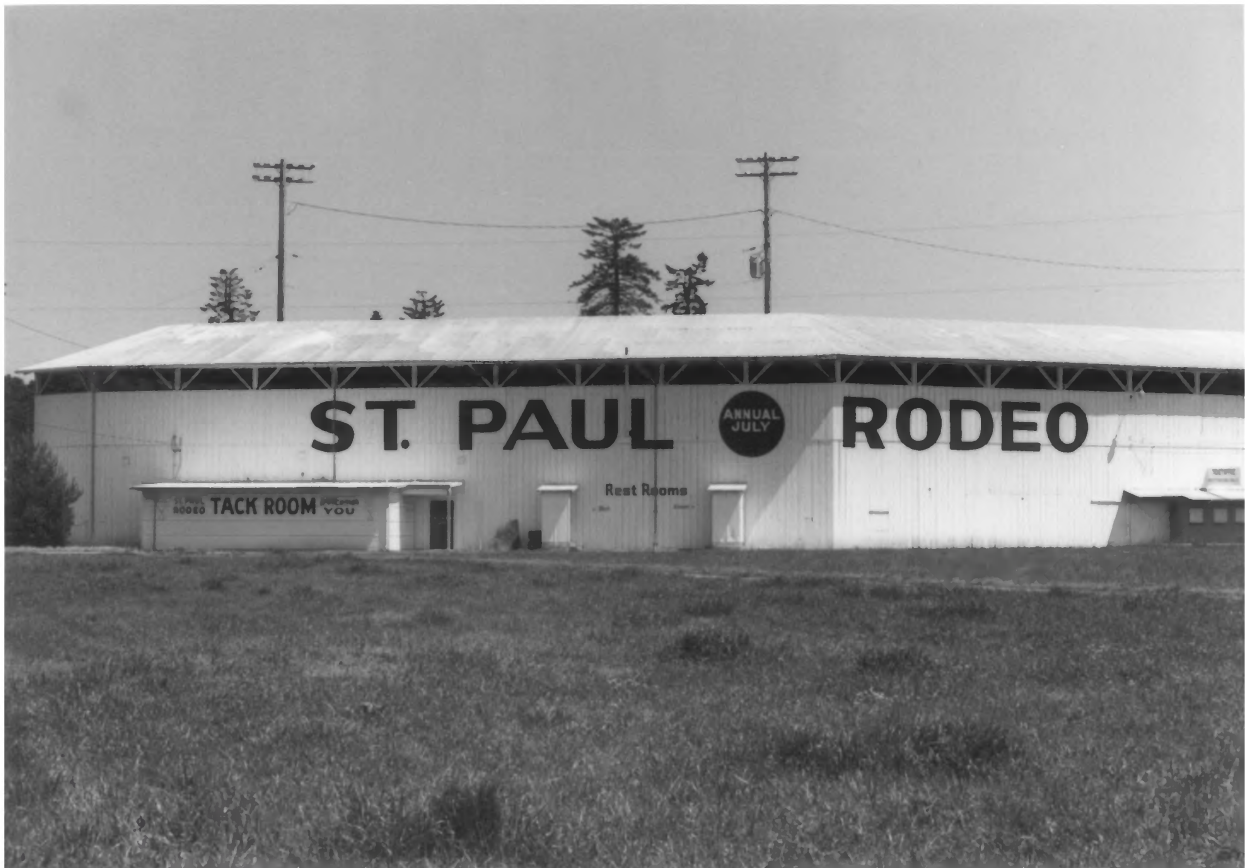
East elevation, Merten House, c. 1885
. Exterior is substantially
intact, interior remodeled 1969.

INVENTORY # 62

ST. PAUL ANNUAL JULY RODEO

ST. PAUL RODEO TACK ROOM

Rest Rooms



St. Paul Historic District
St. Paul, OR

James Hamrick photo, 1980
1829 NW Lovejoy, #505
Portland, OR 97209

Negative at 525 Trade St., SE

Salem, OR 97310

36 of 69

North elevation, St. Paul Rodeo
grandstands. Largest non-commercial
structure in St. Paul

INVENTORY # 14



St. Paul Historic District
St. Paul, OR

James Hamrick photo, 1980
1829 NW Lovejoy, #505
Portland, OR 97209

Negative at 525 Trade St., SE
Salem, OR 97310

37 of 69
View from the south on the main
north/south axis through St. Paul.
View from inside south edge of
district.



St. Paul Historic District
St. Paul, OR

James Hamrick photo, 1980
1829 NW Lovejoy, #505
Portland, OR 97209

Negative at 525 Trade St., SE

Salem, OR 97310

38 of 69

INVARIANT #59

Northeast elevation, McKay House,
1912 Adjacent to Rodeo
grounds, house is the only one in
St. Paul with a full porch on the
upper story.



St. Paul Historic District
St. Paul, OR

James Hamrick photo, 1980
1829 NW Lovejoy, #505
Portland, OR 97209

Negative at 525 Trade St., SE

Salem, OR 97310

39 of 69

East elevation, Ernst House, 1912
Well kept bungalow is
a twin of 392 SW Main, to the
north.

INVANTON # 64



St. Paul Historic District
St. Paul, OR

James Hamrick photo, 1980
1829 NW Lovejoy, #505
Portland, OR 97209

Negative at 525 Trade St., SE
Salem, OR 97310

40 of 69

INVENTORY # 54

Southwest elevation, 391 SE Main,
c. 1882 Silo from
St. Paul Feed & Mill complex is
to the left rear of photo.



St. Paul Historic District
St. Paul, OR

James Hamrick photo, 1980
1829 NW Lovejoy, #505
Portland, OR 97209

Negative at 525 Trade St., SE
Salem, OR 97310

41 of 69

Northwest elevation, Quiroz House
c.1880

INVENTORY # 52



St. Paul Historic District
St. Paul, OR

James Hamrick photo, 1980
1829 NW Lovejoy, #505
Portland, OR 97209

Negative at 525 Trade St., SE
Salem, OR 97310

42 of 69 *inventory #67*

West elevation, Old Rectory.
Addition to previous
rectory. Moved to present site
after WWII.



St. Paul Historic District
St. Paul, OR

James Hamrick photo, 1980
1829 NW Lovejoy, #505
Portland, OR 97209

Negative at 525 Trade St., SE
Salem, OR 97310

43 of 69 *INVENTORY # 67*

Northeast elevation, Old Rectory,
showing original building on
right and newer, larger addition
on the left.



St. Paul Historic District,
St. Paul, OR

Unknown photographer, 1939
Courtesy Oregon Historical Society
1230 SW Park
Portland, OR 97205
Negative at same

44 of 69 LOOKING NORTH ON
MAIN STREET

St. Paul street scene from the
south, 13 August, 1939. Most of
buildings are extant.



St. Paul Historic District
St. Paul, OR

James Hamrick photo, 1980
1829 NW Lovejoy, #505
Portland, OR 97209

Negative at 525 Trade St., SE

Salem, OR 97310

45 of 69

*LOOKING NORTH ON
MAIN STREET*

Similar view as previous photo,
1980. Shows Ernst Hardware bldgs.
left of center (1976-77) with
compatible facades.



ST. PAUL FEED & SUPPLY

Pittsboro
Connecticut

CHECK-R-MIX

Research
Approved
Formulas

Moor-Kans
ST. PAUL FEED & SUPPLY

St. Paul Historic District
St. Paul, OR

James Hamrick photo, 1980
1829 NW Lovejoy, #505
Portland, OR 97209

Negative at 525 Trade St., SE

Salem, OR 97310

46 of 69

INVENTORY # 51

West elevation, St. Paul Feed &
Mill, c. 1910. With the ex-
ception of aluminum siding, the
building is unchanged.



St. Paul Historic District
St. Paul, OR

James Hamrick photo, 1980
1829 NW Lovejoy, #505
Portland, OR 97209

Negative at 525 Trade St., SE
Salem, Or 97310

47 of 69 INVENTORY # 51

Southwest view of St. Paul Feed
and Mill. Original building to
the left. Middle bldg. also
horizontal siding covered with
aluminum but is later addition.



St. Paul Historic District
St. Paul, OR

James Hamrick photo, 1980
1829 NW Lovejoy, #505
Portland, OR 97209

Negative at 525 Trade St., SE

Salem, OR 97310

48 of 69

INVENTORY # 50

Southwest elevation. Ernst Hardware bldg., c.1910 Partial-sided with aluminum. Same corner of bldg. visible in far right of photo # *44*



St. Paul Historic District
St. Paul, OR

James Hamrick photo, 1980
1829 NW Lovejoy, #505
Portland, OR 97209

Negative at 525 Trade St., SE
Salem, Or. 97310

49A of 69

~~Southeast~~ view of St. Paul
Community Hall, c. 1940

INVENTORY #76



St. Paul Historic District
St. Paul, Marion County
Oregon

49b of 69 *INVENTORY # 76*

East and north elevations,
St. Paul Community Hall
showing misguided improve-
ment of shake-clad canopy
added to Modernistic facade.

Elisabeth Potter photo
February 13, 1981
SHPO
Salem, OR 97310



US

UNITED STATES NATIONAL

BANK

OF OREGON

St. Paul Historic District
St. Paul, OR

James Hamrick photo, 1980
1829 NW Lovejoy, #505
Portland, OR 97209

Negative at 525 Trade St., SE
Salem, OR 97310

50 of 69

East elevation, US Bank, 1908
. Exterior unchanged with the
exception of missing cornice.

inventory # 77

St Paul St
was taken
about 1886

St. Paul Historic District

St. Paul OR

Unknown photographer,

Courtesy Joe McKay

242 NE Main, St. Paul, OR 97137

Negative at same

51 of 69

St. Paul street scene, looking
north. St. Paul old cemetery
past last structure on right.
Date on photo inaccurate.



St. Paul Historic District
St. Paul, OR

James Hamrick photo, 1980
1829 NW Lovejoy, #505
Portland, OR 97209

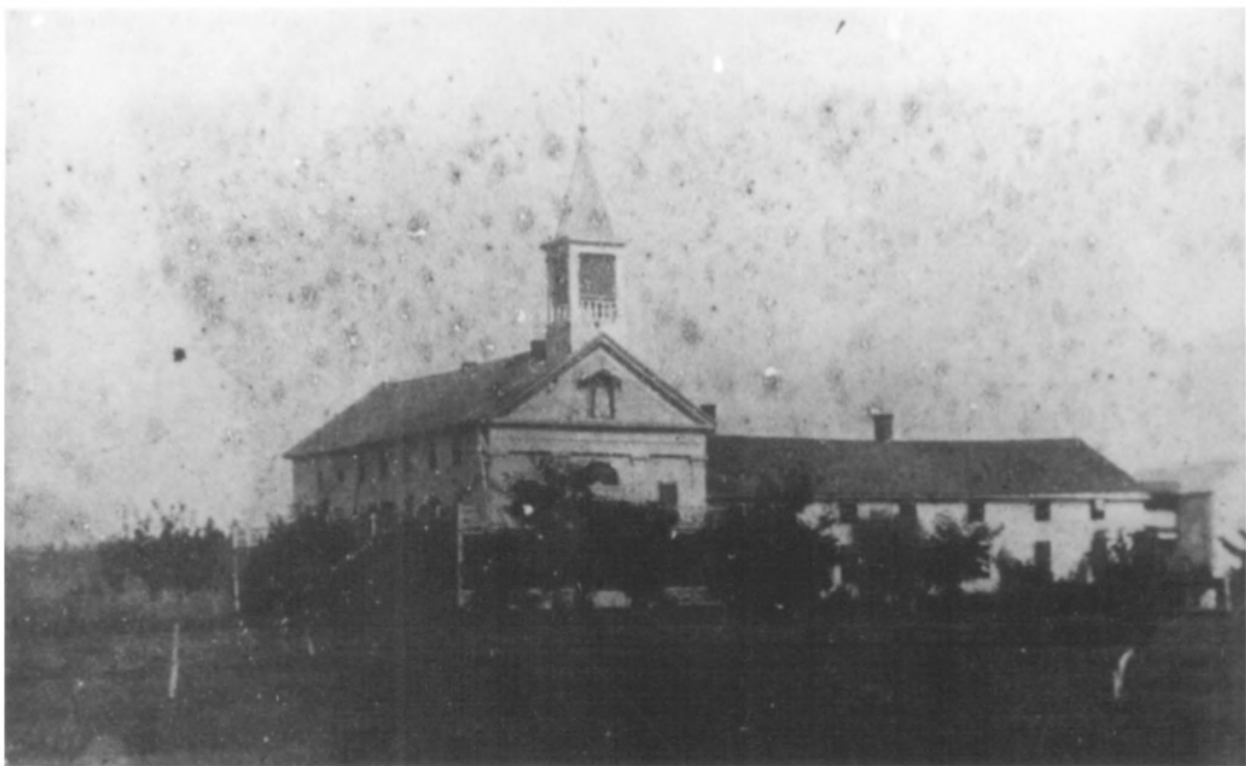
Negative at 535 Trade St., SE

Salem, OR 97310

52 of 69

INVENTORY # 87

View from the northeast of the
site of the three convent schools
which occupied the site from
1844 till 1970.



St. Paul Historic District
St. Paul, OR

Unknown photographer, n.d.

Courtesy Joe McKay

242 NE Main, St. Paul, OR 97137

Negative at same

53 of 69

East elevation, original academy buildings. Chapel (1845) and wing (1846). old convent wing to left destroyed previous to photo

Pauls Academy



St. Paul Historic District
St. Paul, OR

Unknown photogrpher, n.d.

Courtesy Joe McKay

242 NE Main, St. Paul, OR 97137

Negative at same

54 of 69

St. Paul Academy, 1891-1911.

Original chapel (1845) incorpo-
rated in new building, visible
to rear. Destroyed by fire, 1911.



St. Paul Historic District
St. Paul, OR

Unknown photographer, c.1904

Courtesy Joe McKay

242 NE Main, St. Paul, OR 97137

Negative at same

55 of 69

Detail of east (front) elevation
St. Paul Academy,



ST. PAUL'S ACADEMY
ST. PAUL, OREGON

St. Paul Historic District
St. Paul, OR

Unknown Photographer, n.d.

Courtesy Joe McKay

242 NE Main, St. Paul, OR 97137

Negative at same

56 of 69

Southeast elevation, St. Paul
Academy, 1912-1970.



St. Paul Historic District
St. Paul, OR

James Hamrick photo, 1980
1829 NW Lovejoy, #505
Portland, OR 97209

Negative at 525 Trade St., SE
Salem, OR 97310

57 of 69

Southeast view of St. Paul's
Roman Catholic Church

INVENTORY # 85



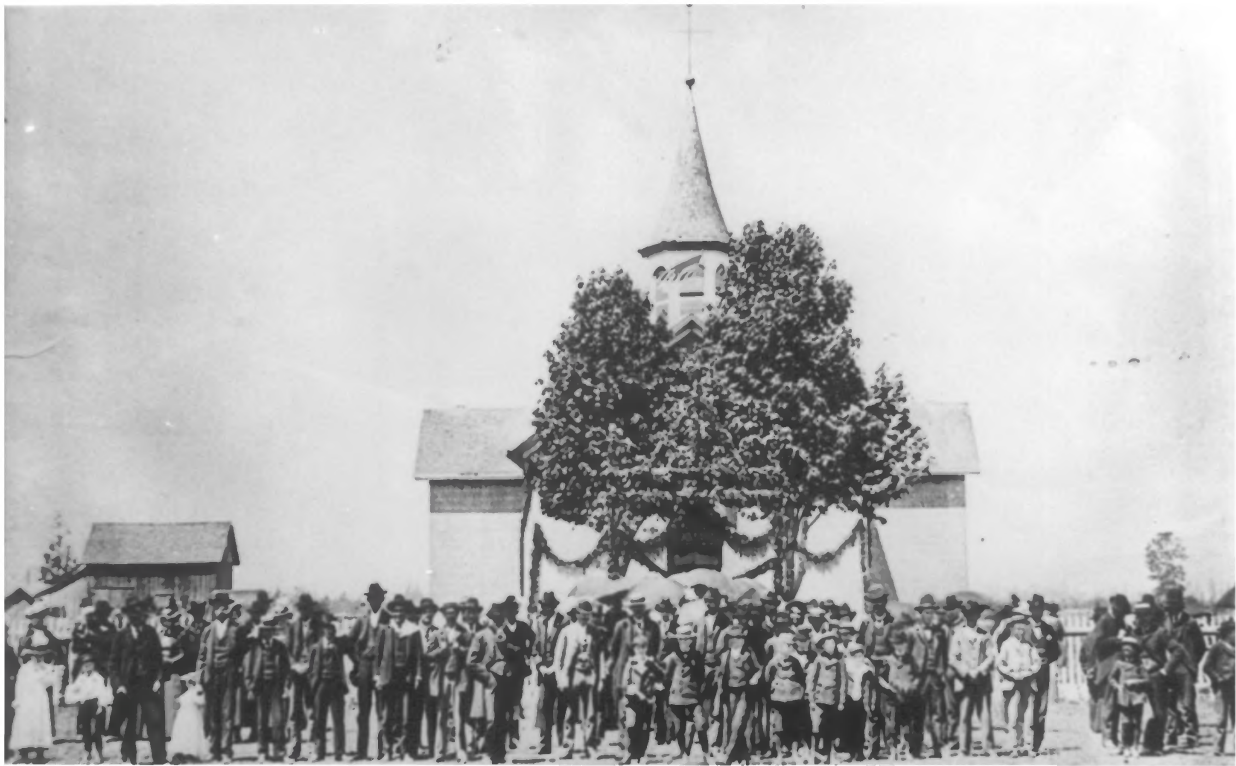
St. Paul Historic District
St. Paul, OR

James Hamrick photo, 1980
1829 NW Lovejoy, #505
Portland, OR 97209

Negative at 525 Trade St., SE
Salem, OR 97310

58 of 69 *INVENTORY # 85*

East elevation, St. Paul Roman
Catholic Church, 1846.



St. Paul Historic District

St. Paul, OR

Unknown Photographer, c.1898

Courtesy Joe McKay

242 NE Main, St. Paul, OR 97137

Negative at same

59 of 69

East elevation, St. Paul Catholic
church, before 1898 alterations.

First brick church in Oregon, built at St. Paul, Marion County. Cornerstone laid May 24th, 1846; dedicated November 1st the same year.



PHOTO BY M.W. EARL

St. Paul Historic District
St. Paul, OR

Unknown photographer. c.1920

Courtesy Joe McKay

242 NE Main, St. Paul, OR 97137

Negative at same

60 of 69 INVENTORY # 85

Northeast elevation, St. Paul Ca-
tholic Church, kitchen wing of
original rectory visible on lower
left



St. Paul Historic District

St. Paul, OR

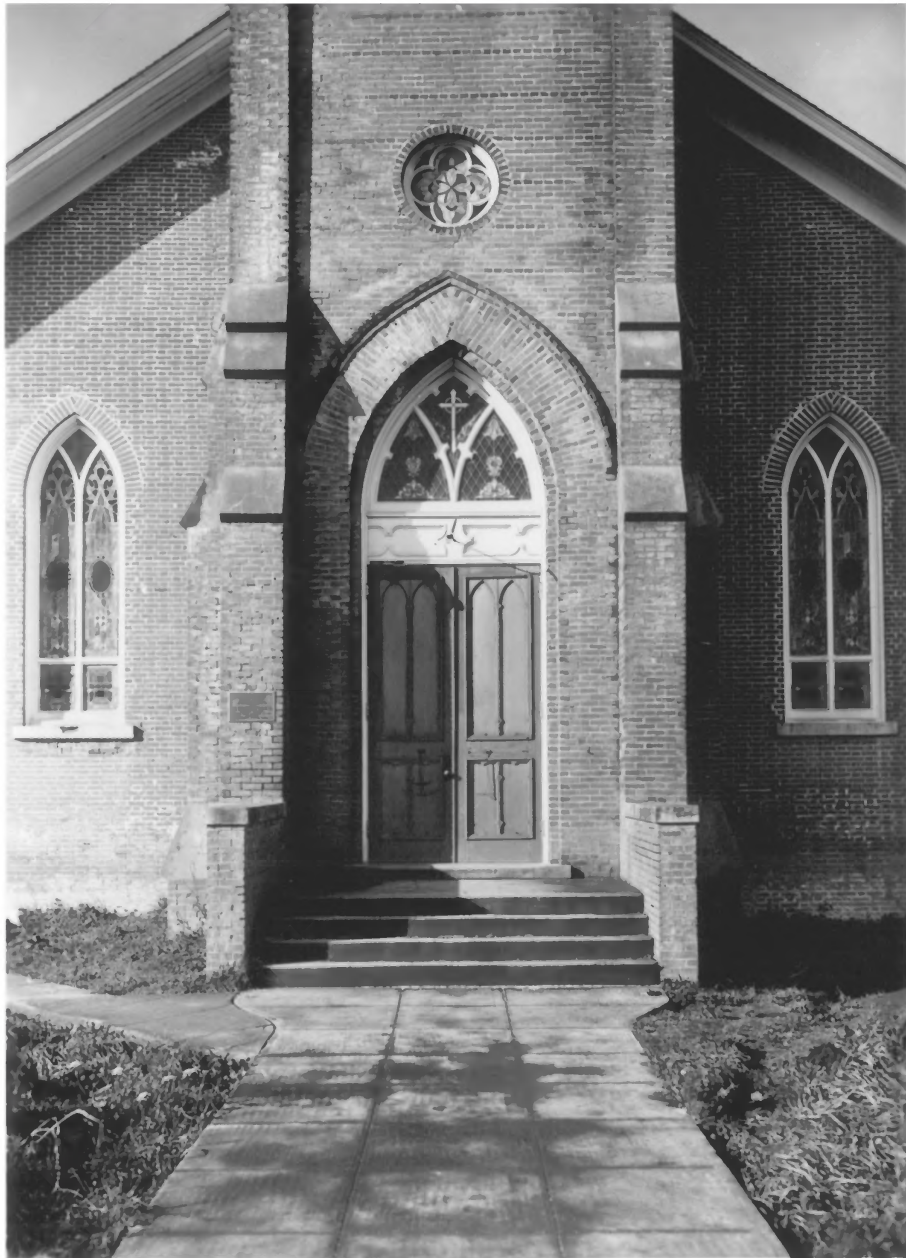
Unknown photographer, 1939

Courtesy Oregon Historical Society
1230 SW Park, Portland, OR 97205

Negative at same

61 of 69 *INVENTORY #85*

East elevation, St. Paul Catholic
Church, 1939.



St. Paul Historic District
St. Paul, OR.

Unknown photographer, 1939

Courtesy Oregon Historical Society
1230 SW Park, Portland, OR 97205

Negative at same

62 of 69 INVENTORY #85

Detail of entrance and east
facade. Note change in roof
pitch, addition of arched
windows.



St. Paul Historic District
St. Paul, OR

Unknown photographer, 1939

Courtesy Joe McKay

242 NE Main, St. Paul, OR 97137

Negative at same

FEB 8

63 of 69

INVENTORY # 85

Photo of church, 11 May, 1939
during Centenary celebration.

Original portions of old rectory
visible left edge of photo.

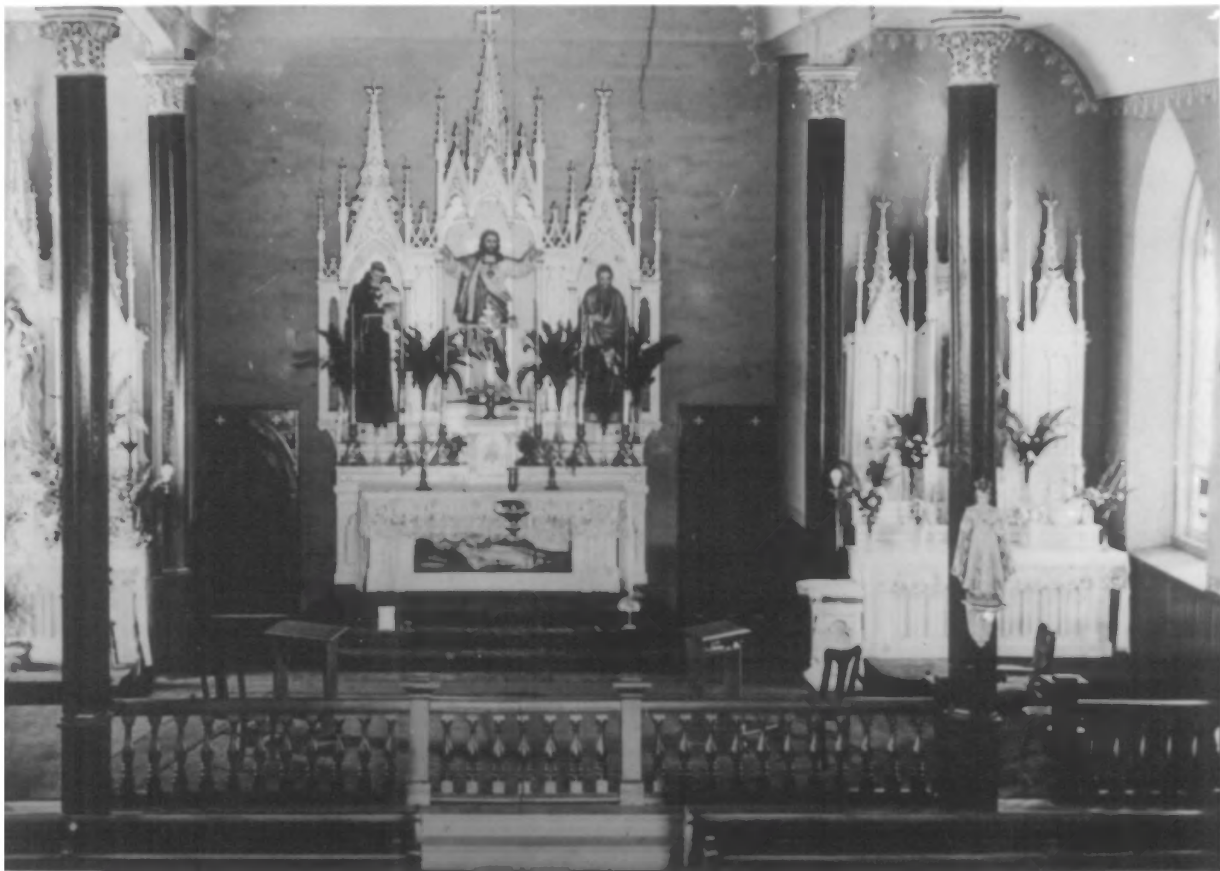


St. Paul Historic District
St. Paul, OR
Unknown photographer, n.d.
Courtesy Joe McKay
242 NE Main, St. Paul, OR 97137
Negative at same.

64 of 69

View of interior of church,
completed 1866, before reno-
vation which was begun in 1898.

INVAN 1004 # 85



St. Paul Historic District
St. Paul, OR

Unknown photographer, n.d.

Courtesy Joe McKay

242 NE Main, St. Paul, OR 97137

Negative at same

65 of 69

Photo of interior of church after
renovation.

INVENTORY # 85

FEB 8 1982



St. Paul Historic District
St. Paul, OR

James Hamrick, photo, 1980
1829 NW Lovejoy, #505
Portland, OR 97209

Negative at 525 Trade St., SE

Salem, OR 97310

66 of 69

Northeast view, Smith House
c. 1910

INVENTORY # 91



Smith House (Inventory #91)
North elevation
Looking south on B Street

St. Paul Historic District
St. Paul, Marion County
Oregon

67 of 69

Elisabeth Potter photo
February 13, 1981
SHPO
Salem, OR 97310



St. Paul Historic District
St. Paul, Marion County
Oregon

68 of 69

Norman Cottage opposite
Smith House (Inventory #92)
South elevation
Looking north from Blanchet

Elisabeth Potter photo
February 13, 1981
SHPO
Salem, OR 97310



St. Paul Historic District
St. Paul, Marion County
Oregon

69 of 69

Looking east on Blanchet
from western gateway to
district. Inventory Nos.
92 and 85 (St. Paul Church)

Elisabeth Potter photo
February 13, 1981

SHPO

Salem, OR 97310

FEB 8 1982



St. Paul Historic District
St. Paul, Marion County
Oregon

Series #2, 1 of 5

Looking W/NW on Church St.
at non-historic properties
behind school gymnasium.
Cape Cod cottage is Inven-
tory No. 6.

Elisabeth Potter photo
February 13, 1981
SHPO
Salem, OR 97310

FEB 8 1982



St. Paul Historic District
St. Paul, Marion County
Oregon

Series #2, 2 of 5

Modern dwelling fronting
north edge of Church Street
(Inventory No. 4)

Elisabeth Potter photo
February 13, 1981
SHPO
Salem, OR 97310



St. Paul Historic District
St. Paul, Marion County
Oregon

Series #2, 3 of 5

Modern dwelling fronting
north edge of Church Street
(Inventory No. 3)

Elisabeth Potter photo
February 13, 1981
SHPO
Salem, OR 97310



St. Paul Historic District
St. Paul, Marion County
Oregon

Series #2, 4 of 5

Compatible stuccoed and
tile-roofed Post-War dwell-
ing at eastern gateway to
district (Inventory No. 7)

Elisabeth Potter photo
February 13, 1981
SHPO

Salem, OR 97310

FEB 8

1982



St. Paul Historic District
St. Paul, Marion County
Oregon

Series #2, 5 of 5

Looking west on Church St.
from eastern gateway to
historic district. St.
Paul Church at west end of
axis.

Elisabeth Potter photo
February 13, 1981
SHPO
Salem, OR 97310

FEB 8

227