



Shelby County Courthouse and
Main Street Commercial District
Shelbyville, Shelby County
Kentucky

MAR 21 1978

Mary Cronan Oppel

April 1977

Kentucky Heritage Commission,
Frankfort, Kentucky

264

Photo 1. Photo taken from
the northwest showing the
facades of 544-512 Main Street.

MAY 23 1977



BANK
OF
SHELBYVILLE
ORGANIZED 1899

MAIN ST

ONE WAY

Shelby County Courthouse and
Main Street Commercial District
Shelbyville, Shelby County
Kentucky

MAR 21 1978

Mary Cronan Oppel

April 1977

Kentucky Heritage Commission
Frankfort, Kentucky

Photo 2. ¹⁶⁴ 544 and portion of
540 Main Street.

MAY 23 1977



Shelby County Courthouse and
Main Street Commercial District
Shelbyville, Shelby County
Kentucky

MAR 21 1978

Mary Cronan Oppel

April 1977

Kentucky Heritage Commission
Frankfort, Kentucky

Photo 3.9⁶⁴ Upper level of
544 Main Street.

MAY 23 1977



Shelby County Courthouse and
Main Street Commercial District
Shelbyville, Shelby County
Kentucky

Mary Cronan Oppel

April 1977

Kentucky Heritage Commission
Frankfort, Kentucky

Photo 4 of 64 540 Main Street.

MAR 21 1978



Shelby County Courthouse and
Main Street Commercial District
Shelbyville, Shelby County
Kentucky

MAR 21 1978

Mary Cronan Oppel
April 1977
Kentucky Heritage Commission
Frankfort, Kentucky

Photo 5. 538 Main Street.

09 64

MAY 23 1977



LAWSON'S

Shelby County Courthouse and
Main Street Commercial District
Shelbyville, Shelby County
Kentucky

MAR 21 1978

Mary Cronan Oppel
April 1977
Kentucky Heritage Commission
Frankfort, Kentucky

Photo 6. 528 Main Street.

764

MAY 23 1977



LEE • MCCLAIN CO.

MOVED
Lee McClain Co.
1234 5th St.
1234 5th St.

AUCTION
1234 5th St.

SIERS 524 SIERS

Sto

Shelby County Courthouse and
Main Street Commercial District
Shelbyville, Shelby County
Kentucky

Mary Cronan Oppel

April 1977

Kentucky Heritage Commission
Frankfort, Kentucky

Photo 7. 524 Main Street.

964

MAR 21 1978

MAY 23 1977



LERMAN BROS

50% OFF
WINTER COATS

50% OFF
WINTER COATS

MOVED
LEE MCT

SAUC
\$
70% OFF

Shelby County Courthouse and
Main Street Commercial District
Shelbyville, Shelby County
Kentucky

MAR 21 1978

Mary Cronan Oppel

April 1977

Kentucky Heritage Commission
Frankfort, Kentucky

Photo 8. 520 Main Street.

q 64

MAY 23 1977



NEY R

LINCOLN
DEPT STORE

LER

BINGO
50

Shelby County Courthouse and
Main Street Commercial District
Shelbyville, Shelby County
Kentucky

MAR 21 1978

Mary Cronan Oppel

April 1977

Kentucky Heritage Commission
Frankfort, Kentucky

Photo 9. 514 Main Street.

ej 64

MAY 23 1977



Shelby County Courthouse and
Main Street Commercial District
Shelbyville, Shelby County
Kentucky

MAR 21 1978

Mary Cronan Oppel

April 1977

Kentucky Heritage Commission
Frankfort, Kentucky

Photo 10. 512 Main Street.

264

MAY 23 1977

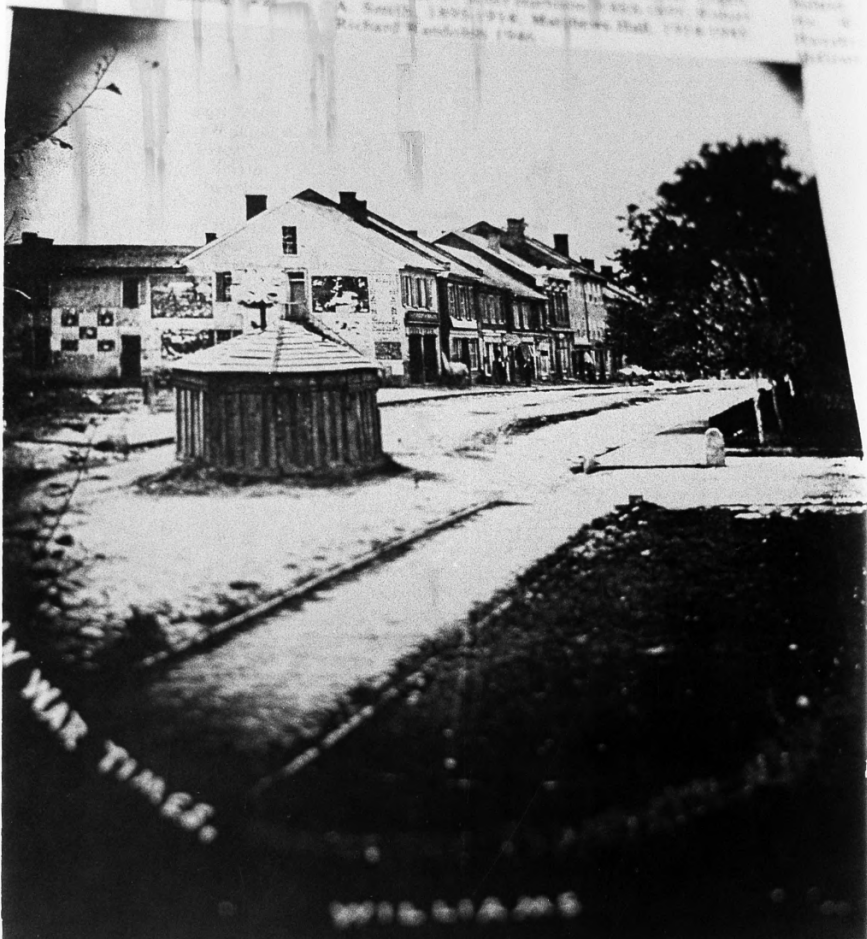
BANKS, SOLID SYM

THE HISTORY

At the beginning of the century, the bank was in the building which is now the site of the present building. It was destroyed by fire in 1812, and the present building was erected by the Bank's Board in 1815. It was destroyed by fire in 1818, when it became a ruin. The bank operates now in the present building.

Bank of North Carolina's...
 Joseph W. Miller, 1818-1820; George...
 1872-1880; W. Scott...
 A. Smith, 1890-1914;...
 Richard... 1940.

Bank of North Carolina's...
 1818-1820;...
 1872-1880;...
 1890-1914;...
 1914-1940.



WAR TIMES

1914-1940

Shelby County Courthouse and
Main Street Commercial District
Shelbyville, Shelby County
Kentucky

MAR 21 1977

Photographer unknown
c. 1862

Photograph as it appeared in the
Sentinel News, November 1967.

Photo 10²⁶⁴ a. Photograph taken
from the northwest showing
512-544 Main Street.

MAY 23 1977

THEN...

Main Street West from Court House
Shelbyville, Kentucky



Shelby County Courthouse and
Main Street Commercial District
Shelbyville, Shelby County
Kentucky

MAR 21 1978

Photographer unknown.

c. 1920

Photograph as it appeared in the
Sentinel News, November 1967.

Photo 10²⁶⁴ b. Photograph taken
from the west showing 512-
544 Main Street.

MAY 23 1977



Shelby County Courthouse and
Main Street Commercial District
Shelbyville, Shelby County
Kentucky

MAR 21 1978

Mary Cronan Oppel

April 1977

Kentucky Heritage Commission
Frankfort, Kentucky

Photo II. 500 Main Street.

864

MAY 23 1977



Shelby County Courthouse and
Main Street Commercial Dist.
Shelbyville, Shelby County
Kentucky

MAR 21 1978

Mary Cronan Oppel

April 1977

Kentucky Heritage Commission
Frankfort, Kentucky

964
Photo 12. Fountain Square
viewed from the northwest.
The city fountain is in the
center.

MAY 23 1977



Shelby County Courthouse and
Main Street Commercial Dist.
Shelbyville, Shelby County
Kentucky

MAR 21 1978

Mary Cronan Oppel

April 1977

Kentucky Heritage Commission
Frankfort, Kentucky

Photo 13. ^{of 64} Old Masonic Lodge
Building viewed from north-
west.

MAY 23 1977



FOR
RENT

Shelby County Courthouse and
Main Street Commercial District
Shelbyville, Shelby County
Kentucky

MAR 21 1976

Mary Cronan Oppel
April 1977
Kentucky Heritage Commission
Frankfort, Kentucky

of 64

Photo 14. Upper facade of
Old Masonic Lodge Building
on Fountain Square.

MAY 23 1977



Shelby County Courthouse and
Main Street Commercial Dist.
Shelbyville, Shelby County
Kentucky

MAR 21 1978

Mary Cronan Oppel

April 1977

Kentucky Heritage Commission
Frankfort, Kentucky

q 64

Photo 15. 422, 420 and portion
of 418 Main Street.

MAY 23 1977



NO
PARKING
COMMERCIAL
LOADING
15
MINUTES

KENTUCKY
Finance
LOANS 7500
Call in name of Kentucky

KENTUCKY
Finance
LOANS 7500
Call in name of Kentucky

Shelby County Courthouse and
Main Street Commercial Dist.
Shelbyville, Shelby County
Kentucky

Mary Cronan Oppel

April 1977

Kentucky Heritage Commission
Frankfort, Kentucky

of 64

Photo 16. 420 Main Street.

MAR 21 1978

MAY 23 1977



Shelby County Courthouse and
Main Street Commercial Dist.
Shelbyville, Shelby County
Kentucky

MAR 21 1978

Mary Cronan Oppel

April 1977

Kentucky Heritage Commission
Frankfort, Kentucky

of 64
Photo 17. 418 and 416 Main
Street.

MAY 23 1977



Shelby County Courthouse and
Main Street Commercial Dist.
Shelbyville, Shelby County
Kentucky

MAR 21 1978

Mary Cronan Opper

April 1977

Kentucky Heritage Commission
Frankfort, Kentucky

q 64

Photo 18. 419 and 415-417
Main Street viewed from the
south.

MAY 23 1977



Shelby County Courthouse and
Main Street Commercial District
Shelbyville, Shelby County
Kentucky **MAR 21 1978**

Mary Cronan Oppel

April 1977

Kentucky Heritage Commission
Frankfort, Kentucky

q 69

Photo 19. 423, 421 and 419
Main Street, viewed from the
southwest.

MAY 23 1977



COURT SQUARE
EST. 1848

40
59

WOMEN'S TAILORING SERVICE

SHELBY COUNTY TRUST

SH
CC
TR
BA

Shelby County Courthouse and
Main Street Commercial District
Shelbyville, Shelby County
Kentucky

Mary Cronan Oppel

MAR 21 1978

April 1977

Kentucky Heritage Commission
Frankfort, Kentucky

464

Photo 20. 423 to 415 Main
Street viewed from the
southwest.

MAY 23 1977



Shelby County Courthouse and
Main Street Commercial District
Shelbyville, Shelby County
Kentucky

MAY 23 1977

Mary Cronan Oppel

April 1977

Kentucky Heritage Commission
Frankfort, Kentucky

of 64

Photo 21. Centenary Methodist
Church - south or Main Street
facade.

MAR 21 1978



Centenary M. E. Church.
Shelbyville Tenn.

Shelby County Courthouse
and Main Street Commercial Dist.
Shelbyville, Shelby County
Kentucky

MAY 23 1977

Photographer unknown
c. 1900

MAR 21 1978

Kentucky Heritage Commission
Frankfort, Kentucky

464

Photo 21 a. Photograph
taken from the south showing the
Centenary Methodist Church
several years after its completion.



Shelby County Courthouse and
Main Street Commercial District
Shelbyville, Shelby County
Kentucky

MAR 21 1978

Mary Cronan Oppel

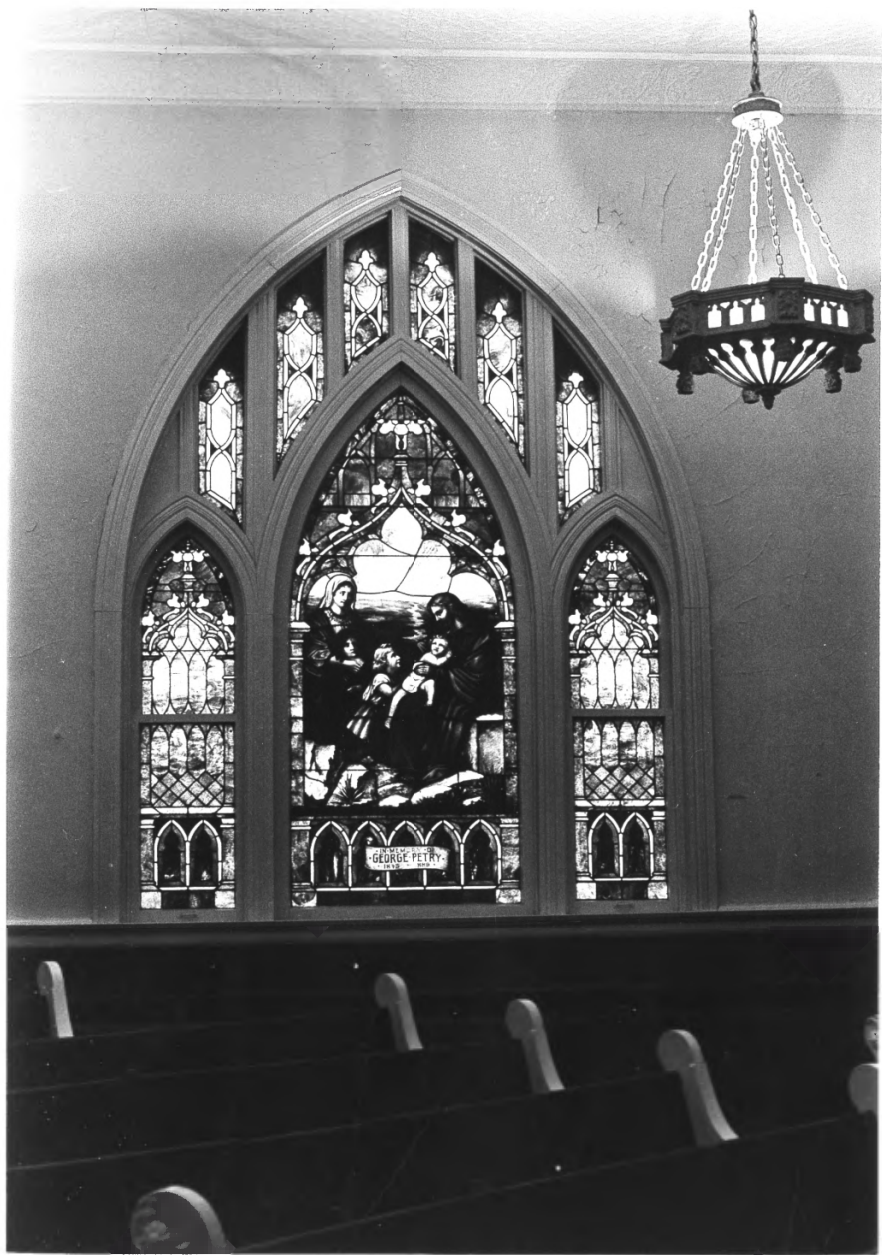
April 1977

Kentucky Heritage Commission
Frankfort, Kentucky

864

Photo 22. Centenary Methodist
Church viewed from northwest.

MAY 23 1977



Shelby County Courthouse and
Main Street Commercial District
Shelbyville, Shelby County
Kentucky

MAR 21 1978

Mary Cronan Oppel

April 1977

Kentucky Heritage Commission
Frankfort, Kentucky

964

Photo 23. Interior photo
showing stained glass window
in the church.

MAY 23 1977



Shelby County Courthouse and
Main Street Commercial District
Shelbyville, Shelby County
Kentucky

MAR 21 1978

Mary Cronan Oppel

April 1977

Kentucky Heritage Commission
Frankfort, Kentucky

964

Photo 24. Photo taken from
the east showing the
courthouse.

MAY 23 1977



Shelby County Courthouse and
Main Street Commercial District
Shelbyville, Shelby County
Kentucky

MAR 21 1978

Mary Cronan Oppel

April 1977

Kentucky Heritage Commission
Frankfort, Kentucky

64

Photo 25. Main Street facade
of Shelby County Courthouse.

MAY 23 1977



Shelby County Courthouse and
Main Street Commercial District
Shelbyville, Shelby County
Kentucky

MAR 21 1978

Photographer unknown.

c. 1910

Kentucky Heritage Commission
Frankfort, Kentucky

of 64

Photo 25^a. Photograph
taken from the south showing
the city fountain in the foreground
and the Shelby County Courthouse

which was removed to make
way for the present courthouse.

MAY 23 1977



Shelby County Courthouse and
Main Street Commercial District
Shelbyville, Shelby County
Kentucky

MAR 21 1978

Mary Cronan Oppel

April 1977

Kentucky Heritage Commission
Frankfort, Kentucky

964

Photo 26. Shelby County
Courthouse viewed from
northeast.

MAY 23 1977



Shelby County Courthouse and
Main Street Commercial Dist.
Shelbyville, Shelby County
Kentucky

MAR 21 1978

Mary Cronan Oppel
April 1977

Kentucky Heritage Commission
Frankfort, Kentucky

464

Photo 27. Shelbyville County
Courthouse, detail of east
facade.

MAY 23 1977



Shelby County Courthouse and
Main Street Commercial Dist.
Shelbyville, Shelby County
Kentucky

MAR 21 1978

Mary Cronan Oppel

April 1977

Kentucky Heritage Commission
Frankfort, Kentucky

9 64
Photo 28. Shelby County
Courthouse viewed from
northwest.

MAY 23 1977



Shelby County Courthouse and
Main Street Commercial District
Shelbyville, Shelby County
Kentucky

MAR 21 1978

Mary Cronan Oppel

April 1977

Kentucky Heritage Commission
Frankfort, Kentucky

464

Photo 29. Interior of Shelby
County Courthouse's first floor.
Note Greek key treatment of
door.

MAY 23 1977



Shelby County Courthouse and
Main Street Commercial Dist.
Shelbyville, Shelby County
Kentucky

MAR 21 1978

Mary Cronan Oppel

April 1977

Kentucky Heritage Commission
Frankfort, Kentucky

q 64

Photo 30. First floor interior
of Shelby County Courthouse.

MAY 23 1977



Shelby County Courthouse and
Main Street Commercial District
Shelbyville, Shelby County
Kentucky

MAR 21 1978

Mary Cronan Oppel

April 1977

Kentucky Heritage Commission
Frankfort, Kentucky

4 64

Photo 31. Shelby County
Courthouse, courtroom second
floor.

MAY 23 1977



Shelby County Courthouse and
Main Street Commercial Dist.
Shelbyville, Shelby County
Kentucky

MAY 21 1978

Mary Cronan Oppel

April 1977

Kentucky Heritage Commission
Frankfort, Kentucky

64

Photo 32. Jailer's residence
and jail viewed from east.

MAY 23 1977

te”

ennial Edition is
e both happy and
t is due, and I am
Fay, for the idea

I talent. I do not
where than her
the journalistic
ate to have him
operating a most
years. Thanks,

, too, the late
used to do a
n Chatter”, I
year that she
include this
nd nostalgic
ful writings.

Christmas



REMEMBER THE OLD, OLD JAIL? THEN YOU'RE MUCH OLDER THAN I
THIS ONE DATES BACK TO 1876.

Shelby County Courthouse and
Main Street Commercial District
Shelbyville, Shelby County
Kentucky

Photographer unknown.

c. 1880

Photograph as it appeared in
the Sentinel News November

MAR 21 1978

1967.

23 64

Photo 32 a. Photograph taken
from the north showing the
jailer's residence and attached
jail.

MAY 23 1977



Shelby County Courthouse and
Main Street Commercial Dist.
Shelbyville, Shelby County
Kentucky

MAR 21 1978

Mary Cronan Oppel

April 1977

Kentucky Heritage Commission
Frankfort, Kentucky

of 64

Photo 33. Jailer's residence
and jail viewed from north.

MAY 23 1977



Shelby County Courthouse and
Main Street Commercial Dist.
Shelbyville, Shelby County
Kentucky

MAR 21 1978

Mary Cronan Oppel

April 1977

Kentucky Heritage Commission

Frankfort, Kentucky

64

Photo 34. Jail from
northwest.

MAY 23 1977



Shelby County Courthouse and
Main Street Commercial Dist.
Shelbyville, Shelby County
Kentucky

MAR 21 1978

Mary Cronan Oppel

April 1977

Kentucky Heritage Commission
Frankfort, Kentucky

64

Photo 35. Courthouse and
jailer's residence viewed
from northeast.

MAY 23 1977



Shelby County Courthouse and
Main Street Commercial Dist.
Shelbyville, Shelby County
Kentucky

MAY 21 1978

Mary Cronan Oppel

April 1977

Kentucky Heritage Commission
Frankfort, Kentucky

Q 64

Photo 36. Detail of original
front entrance of the jailer's
residence viewed from the
east.

MAY 23 1977



Shelby County Courthouse and
Main Street Commercial Dist.
Shelbyville, Shelby County
Kentucky

MAR 21 1978

Mary Cronan Oppel

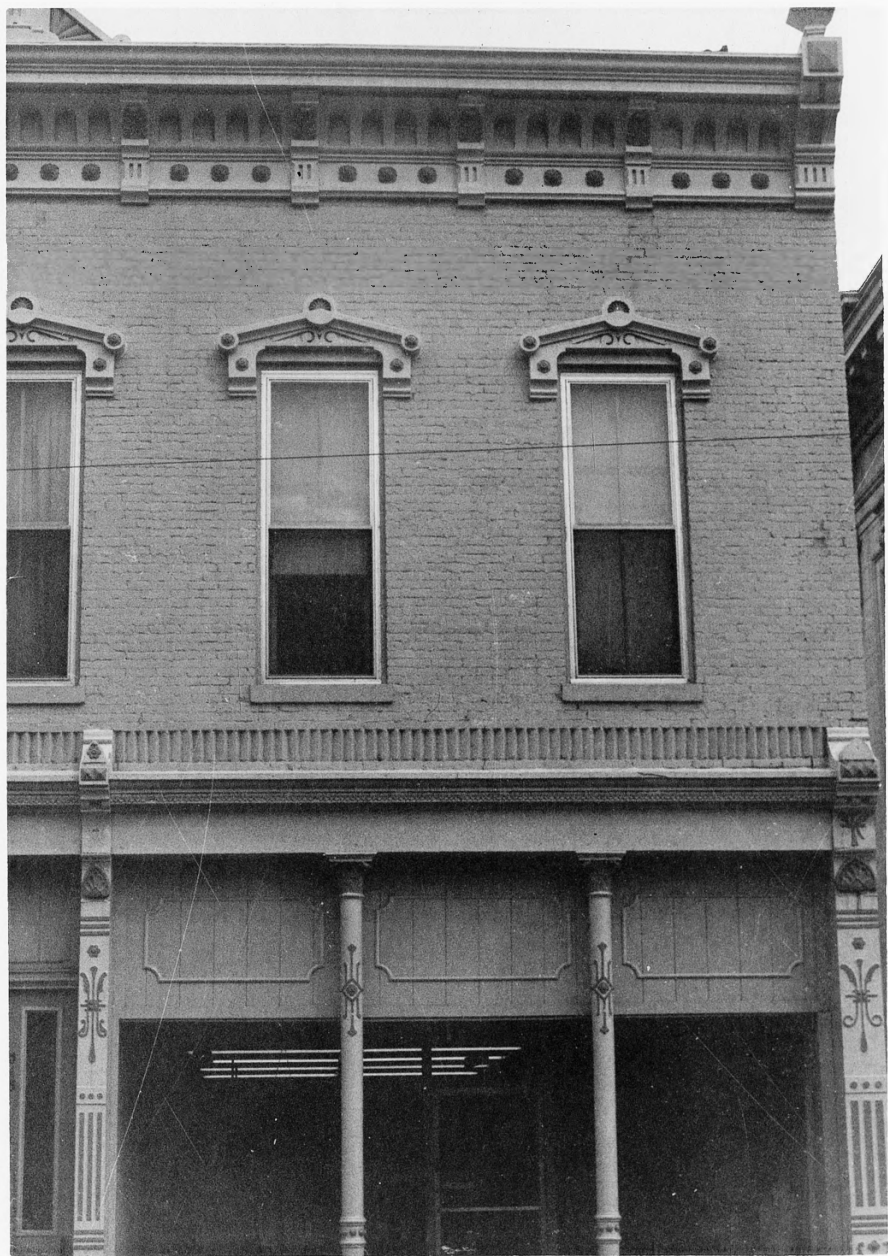
April 1977

Kentucky Heritage Commission
Frankfort, Kentucky

g 64

Photo 37. 513, 519 Main
Street. The courthouse is
on the right.

MAY 23 1977



Shelby County Courthouse and
Main Street Commercial Dist.
Shelbyville, Shelby County
Kentucky

MAR 21 1978

Mary Cronan Oppel

April 1977

Kentucky Heritage Commission
Frankfort, Kentucky

g 64

Photo 38. Detail of the upper
facade of 519 Main Street.

MAY 23 1977



Shelby County Courthouse and
Main Street Commercial District
Shelbyville, Shelby County
Kentucky

Mary Cronan Oppel

April 1977

Kentucky Heritage Commission
Frankfort, Kentucky

Photo 39. ^{of 64} 521 Main Street.

MAR 21 1978

MAY 23 1977



Shelby County Courthouse and
Main Street Commercial District
Shelbyville, Shelby County
Kentucky

Mary Cronan Oppel MAR 21 1978

April 1977

Kentucky Heritage Commission
Frankfort, Kentucky

g 64

Photo 40. 521 West Main,
detail of lower facade.

MAY 23 1977

1902

J. H. HARTFORD



Shelby County Courthouse and
Main Street Commercial District
Shelbyville, Shelby County
Kentucky

Mary Cronan Oppel

April 1977

Kentucky Heritage Commission
Frankfort, Kentucky

864

Photo 41. 521 West Main,
detail of upper facade.

MAR 21 1978

MAY 23 1977



Shelby County Courthouse and
Main Street Commercial District
Shelbyville, Shelby County
Kentucky

Mary Cronan Oppel

April 1977

Kentucky Heritage Commission
Frankfort, Kentucky

9 64

Photo 42. 527, 525, and 521
Main Street.

MAR 21 1978

MAY 23 1977



Shelby County Courthouse and
Main Street Commercial District
Shelbyville, Shelby County
Kentucky

MAR 21 1978

Mary Cronan Oppel
April 1977

Kentucky Heritage Commission
Frankfort, Kentucky

Q 64

Photo 43. 525 Main Street,
detail of upper facade.

MAY 23 1977



Shack

STROBE LIGHTS
100 PS
AMPHIBIOUS WITH
23 CU FT
100

FEDERAL

Man's Jewels

Shelby County Courthouse and
Main Street Commercial District
Shelbyville, Shelby County
Kentucky

Mary Cronan Oppel

MAR 21 1978

April 1977

Kentucky Heritage Commission
Frankfort, Kentucky

Photo 44. ^{of 64} 529, 531 Main Street.

MAY 23 1977



Shelby County Courthouse and
Main Street Commercial Dist.
Shelbyville, Shelby County
Kentucky

Mary Cronan Oppel ~~MAR~~ MAR 21 1978
April 1977

Kentucky Heritage Commission
Frankfort, Kentucky

964
Photo 45. 529, 531 Main Street,
detail of upper facade.

MAY 23 1977



Radio Shack
SEALCO

Play!
BINGO
50¢ A CARD WEEK
BINGO CARDS

FREE BINGO

STROBE LIGHTS
10.95

AM/FM STEREO WITH
23 CHANNELS
116

Shelby County Courthouse and
Main Street Commercial Dist.
Shelbyville, Shelby County
Kentucky

Mary Cronan Oppel **MAR 21 1977**

April 1977

Kentucky Heritage Commission
Frankfort, Kentucky

Photo 46. **g 64** 533 Main Street.

MAY 23 1977

DOLLAR GENERAL STORES

DOLLAR GENERAL STORES
KITCHEN TOWELS 4-1
INFANTS SOCKS 3-1
KNEE HI'S 2-1
SHOP AND SAVE
LONG AND TOWELS 1

POP
POP
POP
POP
POP
POP

Radio Shack

50% OFF
SALE

17000 15000
1875
800 TA STREET WYOMING
20 00 00



Shelby County Courthouse and
Main Street Commercial Dist.
Shelbyville, Shelby County
Kentucky

Mary Cronan Oppel **MAR 21 1978**
April 1977

Kentucky Heritage Commission
Frankfort, Kentucky

964

Photo 47. 535,533 Main
Street.

MAY 23 1977



COMPANY

SALE
ON
MAYTAG

40th ANNIVERSARY
SALE

Participating
Stores on
Frigidians
Appliances
SALE \$50
Only \$100

Bugs

Shelby County Courthouse and
Main Street Commercial Dist.
Shelbyville, Shelby County
Kentucky

MAY 23 1977

Mary Cronan Oppel

MAR 21 1978

April 1977

Kentucky Heritage Commission
Frankfort, Kentucky

of 64

Photo 48.0 541, 537 Main Street.



SALE
on
MAYTAG

50th ANNIVERSARY
STOREWIDE SALE!

FRIGIDAIRE'S 50th ANNIVERSARY SALE

Fantastic Savings on Frigidaire Appliances

The Best Buy Maytag

It's a Certified Name in Food Protection

It's a Certified Name in Food Protection

It's a Certified Name in Food Protection

Shelby County Courthouse and
Main Street Commercial Dist.
Shelbyville, Shelby County
Kentucky

MAR 21 1978

Mary Cronan Oppel

April 1977

Kentucky Heritage Commission
Frankfort, Kentucky

964

Photo 49. 451 Main Street.

MAY 23 1977



BARNETT REALTY COMPANY

FRIGIDAIRE



OR
MAYTAG

ANNIVERSARY
SALE!

Edwin M. Hall
REALTOR

Shelby County Courthouse and
Main Street Commercial Dist.
Shelbyville, Shelby County
Kentucky

MAR 21 1978

Mary Cronan Oppel

April 1977

Kentucky Heritage Commission
Frankfort, Kentucky

of 64

Photo 50. 541, 543, 545, 447

Main Street, viewed from
southeast.

MAY 23 1977



CRANES
BARBER SHOP

BARNETT REALTY COMPANY

Edwin W. Hall
BUILDER
Build for the Future

RESTAURANT

TRAC

Shelby County Courthouse and
Main Street Commercial District
Shelbyville, Shelby County
Kentucky

MAR 21 1978

Mary Cronan Oppel

April 1977

Kentucky Heritage Commission
Frankfort, Kentucky

9 64

Photo 51. 547, 545, 543, 541
Main Street.

MAY 23 1977



CRANE'S
BARBER SHOP

3
BLACK
HONEY
ABLES

4
MILK
HONEY
ABLES

5
MILK
HONEY
ABLES

6
MILK
HONEY
ABLES

7
MILK
HONEY
ABLES

8
MILK
HONEY
ABLES

Shelby County Courthouse and
Main Street Commercial District
Shelbyville, Shelby County
Kentucky

Mary Cronan Oppel

MAR 21 1978

April 1977

Kentucky Heritage Commission
Frankfort, Kentucky

Q. 64

Photo 52. 547 and portion of
545 Main Street.

MAY 23 1977



Shelby County Courthouse and
Main Street Commercial District
Shelbyville, Shelby County
Kentucky

Mary Cronan Oppel MAR 21 1978
April 1977

Kentucky Heritage Commission
Frankfort, Kentucky

7 64

Photo 53. Northeast corner
of Sixth and Main Streets.

MAY 23 1977



DO NOT
ENTER

BARNETT REALTY COMPANY

CHANCE
BARNETT COMPANY

Edwin V. Hall
REALTOR

FRIGIDAIRE

Shelby County Courthouse and
Main Street Commercial Dist.
Shelbyville, Shelby County
Kentucky

MAR 21 1978

Mary Cronan Oppel
April 1977

Kentucky Heritage Commission
Frankfort, Kentucky

264

Photo 54. Corner of Sixth
and Main Streets viewed from
southwest.

MAY 23 1977



Shelby County Courthouse and
Main Street Commercial Dist.
Shelbyville, Shelby County
Kentucky

Mary Cronan Oppel

MAR 21 1978

April 1977

Kentucky Heritage Commission
Frankfort, Kentucky

964

Photo 55. 411 Sixth Street
viewed from southwest.

MAY 23 1977



Shelby County Courthouse and
Main Street Commercial District
Shelbyville, Shelby County
Kentucky

Mary Cronan Oppel

MAR 21 1978

April 1977

Kentucky Heritage Commission
Frankfort, Kentucky

764

Photo 56. 411 Sixth Street
viewed from northwest. 544
Main Street is on the right in
the distance.

MAY 23 1977



Shelby County Courthouse and
Main Street Commercial Dist.
Shelbyville, Shelby County
Kentucky

MAR 21 1978

Mary Cronan Oppel

April 1977

Kentucky Heritage Commission

Frankfort, Kentucky

264

Photo 57. 405, 403, 401
Sixth Street, viewed from
southwest.

MAY 23 1977



Shelby County Courthouse and
Main Street Commercial Dist.
Shelbyville, Shelby County
Kentucky

Mary Cronan Oppel

April 1977

Kentucky Heritage Commission
Frankfort, Kentucky

864

Photo 58. 401 Sixth Street.

MAY 23 1977

MAR 21 1978



Shelby County Courthouse and
Main Street Commercial District
Shelbyville, Shelby County
Kentucky

MAR 21 1978

Photographer unknown.

c. 1900

Photograph as it appears in the
Sentinel News Office in

Shelbyville, Kentucky.

464
Photo 59. Photograph taken
from the southeast showing
both sides of the 500 block
of Main Street.

MAY 23 1977