



300 N. Pelham Rd.

Clark-Ide House

Jacksonville, Alabama, Calhoun County

W. Weaver, 9/27/85

Alabama Historical Commission

Facing E.

Photo number: 1



300 N. Gayle Ave.

First United Methodist Church
Jacksonville, Alabama, Calhoun County

W. Weaver, 9/27/85

Alabama Historical Commission

Facing E.

Photo number: 2



206 W. College St.
Lundsford-Williams House
Jacksonville, Alabama, Calhoun County

W. Weaver, 9/27/85
Alabama Historical Commission

Facing N.

Photo number: 3



204 W. College St.

Privett House

Jacksonville, Alabama, Calhoun County

W. Weaver, 9/27/85

Alabama Historical Commission

Facing N.

Photo number: 4



200 W. College St.

Ferguson House

Jacksonville, Alabama, Calhoun County

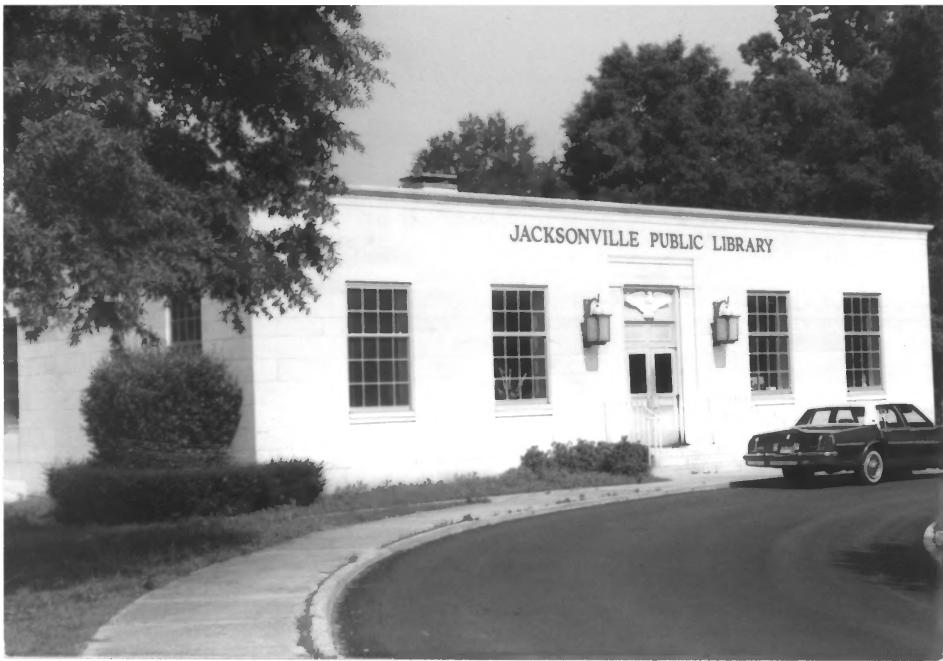
W. Weaver, 9/27/85

Alabama Historical Commission

Facing N.

Photo number: 5

JACKSONVILLE PUBLIC LIBRARY



200 N. Pelham Rd.

Jacksonville Public Library

Jacksonville, Alabama, Calhoun County

W. Weaver, 5/13/85

Alabama Historical Commission

Facing E.

Photo number: 6



City
HOME
435 7701
DRY CLEANERS
ONE HOUR SERVICE

City
DRY CLEANERS

110 Pelham Rd.
AmSouth Bank Annex A
Jacksonville, Alabama, Calhoun County

W. Weaver, 10/5/85
Alabama Historical Commission

Facing E.

Photo number: 7

BOOZER BEAUTY SALON

City
PHYSICIAN
435 7501

108 N. Pelham Rd.

AmSouth Bank Annex B

Jacksonville, Alabama, Calhoun County

W. Weaver, 10/5/85

Alabama Historical Commission

Facing E.

Photo number: 8



CLOSED

NOV 70

BO

106 N. Pelham Rd.

AmSouth Bank Annex C

Jacksonville, Alabama, Calhoun County

W. Weaver, 10/5/85

Alabama Historical Commission

Facing E.

Photo number: 9

AMERICAN SOUTH Bank



100 N. Pelham Rd.

AmSouth Bank

Jacksonville, Alabama, Calhoun County

W. Weaver, 7/9/85

Alabama Historical Commission

Facing E.

Photo number: 10



100 N. Gayle Ave.

Dr. Francis Medical Museum

Jacksonville, Alabama, Calhoun County

W. Weaver, 7/11/85

Alabama Historical Commission

Facing E.

Photo number: 11



TOWN AND COUNTRY
REAL ESTATE INSURANCE

Shoppe

TOWN AND COUNTRY CLUB

BE OFFER
SPECIAL STORAGE
RATES
625-8838

26-28 W. Public Sq.

Posey Building

Jacksonville, Alabama, Calhoun County

W. Weaver, 10/5/85

Alabama Historical Commission

Facing E.

Photo number: 12

Quality Shoppe

POSEY
BLDG.

SALE

2 OFF

Wilson Hobbs



24 W. Public Sq.
Quality Shop
Jacksonville, Alabama, Calhoun County

W. Weaver, 7/81
Alabama Historical Commission

Facing E.

Photo number: 13



Terri's Hair Designers



22 W. Public Sq.
Terri's Hair Designers
Jacksonville, Alabama, Calhoun County

W. Weaver, 9/29/85
Alabama Historical Commission

Facing E.

Photo number: 14

RENTAL SALES
VIDEO MOVIES
RENT OR BUY

SQUARE JACKSONVILLE MALL

**BUMPER
TO
BUMPER**
AUTO PARTS & SERVICE

VIDEO STORES

Margaret's

**AUSTIN'S
AUTO PARTS**



1A-8 W. Public Sq.

Jacksonville, Alabama, Calhoun County

W. Weaver, 9/29/85

Alabama Historical Commission

Facing E.

Photo number: 15

**COLUMBUS
FINANCE**

**COLUMBUS
FINANCE**

HOURS

MON - FRI
9:00 AM - 5:00 PM
SAT - 10:00 AM - 1:00 PM
SUN - CLOSED



4 W. Public Sq.
Columbus Finance

Jacksonville, Alabama, Calhoun County

W. Weaver, 10/5/85

Alabama Historical Commission

Facing E.

Photo number: 16

JACKSONVILLE
STATE
BANK

HR
PARKING
30 AM
5:30 PM
→

COUNTRY

2 W. Public Sq.

Jacksonville State Bank
Jacksonville, Alabama, Calhoun County

W. Weaver, 7/81

Alabama Historical Commission

Facing E.

Photo number: 17

MATA'S



103 S. Pelham Rd.

Matta's

Jacksonville, Alabama, Calhoun County

W. Weaver, 5/13/85

Alabama Historical Commission

Facing E.

Photo number: 18

SOUTH

21



100 W. Ladiga St.
Ramagnano Building
Jacksonville, Alabama, Calhoun County

W. Weaver, 9/29/85
Alabama Historical Commission

Facing N.

Photo number: 19

UNIVERSITY TEXT BOOKS

UNIVERSITY TEXT BOOKS

JACKSONVILLE BOOKSTORE Inc.



104 W. Ladiga St.

Fryar Building

Jacksonville, Alabama, Calhoun County

W. Weaver, 9/29/85

Alabama Historical Commission

Facing N.

Photo number: 20



2 HR
PARKING
8:30 AM
TO 5:30 PM
←



108 W. Ladiga St.

Anniston Newchannels

Jacksonville, Alabama, Calhoun County

W. Weaver, 10/4/85

Alabama Historical Commission

Facing N.

Photo number: 21



AUST
USED FURN.

AUST'S
435-2117

AUST'S
USED FURN
TRADE

FREE
PARKING
1:30 AM
- 5:30 PM

110 W. Ladiga St.

Austin's Used Furniture

Jacksonville, Alabama, Calhoun County

W. Weaver, 10/5/85

Alabama Historical Commission

Facing N.

Photo number: 22



Wissel
INSURANCE
REAL ESTATE
AGENCY

112 W. Ladiga St.

Nisbet Ins. and Real Estate Agency

Jacksonville, Alabama, Calhoun County

W. Weaver, 6/23/81

Alabama Historical Commission

Facing N.

Photo number: 23



WINDBLE REALTY INC.
REAL ESTATE & LOAN
435-6004

JACKSONVILLE
INDIAN AUTHORITY

116

116 W. Ladiga St.

Venable Realty

Jacksonville, Alabama, Calhoun County

W. Weaver, 6/23/81

Alabama Historical Commission

Facing N.

Photo number: 24



100 Murphy Ave.
Arnold-Hudson House
Jacksonville, Alabama, Calhoun County

W. Weaver, 8/15/85
Alabama Historical Commission

Facing W.

Photo number: 25



300 W. Ladiga St.
McCormick-Johnson-Winter House
Jacksonville, Alabama, Calhoun County

W. Weaver, 8/12/81
Alabama Historical Commission

Facing N.

Photo number: 26



201 Murphy Ave.

Snow-Felgar House

Jacksonville, Alabama, Calhoun County

W. Weaver, 10/5/85

Alabama Historical Commission

Facing E.

Photo number: 27



204 W. Drayton St.
Roundtree House
Jacksonville, Alabama, Calhoun County

W. Weaver, 6/14/81
Alabama Historical Commission

Facing N.

Photo number: 28



200 W. Drayton St.

Livesay House

Jacksonville, Alabama, Calhoun County

W. Weaver, 6/14/81

Alabama Historical Commission

Facing N.

Photo number: 29



188 W. Coffee St.

Reid House

Jacksonville, Alabama, Calhoun County

W. Weaver, 5/13/85

Alabama Historical Commission

Facing N.

Photo number: 30



301 Murphy Ave.

Hall House

Jacksonville, Alabama, Calhoun County

W. Weaver, 5/13/85

Alabama Historical Commission

Facing E.

Photo number: 31



AMOCO



207 S. Pelham Rd.
Hammett Amoco Service Station
Jacksonville, Alabama, Calhoun County

W. Weaver, 6/23/81
Alabama Historical Commission

Facing E.

Photo number: 32



303 S. Pelham Rd.

Wright House

Jacksonville, Alabama, Calhoun County

W. Weaver, 6/23/81

Alabama Historical Commission

Facing E.

Photo number: 33



305 S. Pelham Rd.

Fleming-Casey House

Jacksonville, Alabama, Calhoun County

W. Weaver, 10/5/85

Alabama Historical Commission

Facing E.

Photo number: 34



403 S. Pelham Rd.
Francis-Wood House
Jacksonville, Alabama, Calhoun County

W. Weaver, 8/12/81
Alabama Historical Commission

Facing E.

Photo number: 35



405 S. Pelham Rd.

Bondurant House

Jacksonville, Alabama, Calhoun County

W. Weaver, 6/23/81

Alabama Historical Commission

Facing E.

Photo number: 36



301 N. Church Ave.
Carpenter House
Jacksonville, Alabama, Calhoun County

W. Weaver, 9/27/85
Alabama Historical Commission

Facing W.

Photo number: 37



205 N Church Ave.

Lester-Love House

Jacksonville, Alabama, Calhoun County

W. Weaver, 9/27/85

Alabama Historical Commission

Facing W.

Photo number: 38



201 N. Church Ave.
Propst-Geier House
Jacksonville, Alabama, Calhoun County

W. Weaver, 9/27/85
Alabama Historical Commission

Facing W.

Photo number: 39



107 N. Church Ave.
Sewell-Coppock House
Jacksonville, Alabama, Calhoun County

W. Weaver, 9/27/85
Alabama Historical Commission

Facing W.

Photo number: 40



204 N. Church Ave.

Nunnally-Glass Robertson House
Jacksonville, Alabama, Calhoun County

W. Weaver, 5/13/85

Alabama Historical Commission

Facing E.

Photo number: 41



200 E. Clinton St.
First Presbyterian Church
Jacksonville, Alabama, Calhoun County

W. Weaver, 6/14/81
Alabama Historical Commission

Facing S.

Photo number: 42



THE
ACENT DESIGN
FLORIST

You Were
OPEN

City
DRY CLEANERS
ONE DAY SERVICE
OR ALTERATION

114 E. Clinton St.

City Dry Cleaners

Jacksonville, Alabama, Calhoun County

W. Weaver, 9/27/85

Alabama Historical Commission

Facing S.

Photo number: 43



BENNY'S

ASTORIAN

Accent
Floral
can...

Send
your thoughts
with special

care.

Open
Here

120 E. Clinton St.
Bethea Building
Jacksonville, Alabama, Calhoun County

W. Weaver, 9/27/85
Alabama Historical Commission

Facing S.

Photo number: 44



108 E. Clinton St.

Village Inn

Jacksonville, Alabama, Calhoun County

W. Weaver, 9/27/85

Alabama Historical Commission

Facing S.

Photo number:45

A black and white photograph of a single-story brick building. The building has a prominent sign above the entrance that reads "VILLAGE INN FAMILY BUFFET". The sign is dark with white text and a small lamp icon on the left. The building features a central door with a transom window and a large window to the right with shutters. A white car is partially visible on the right side of the frame. In the foreground, there is a paved area with a crosswalk and a utility pole with power lines on the left.

VILLAGE INN
FAMILY BUFFET

108 E. Clinton St.

Village Inn, West Annex

Jacksonville, Alabama, Calhoun County

W. Weaver, 9/27/85

Alabama Historical Commission

Facing S.

Photo number: 45A



CROW DRUG



JAMES HASTON
PHARMACY

101 E. Clinton St.

Crow Drug

Jacksonville, Alabama, Calhoun County

W. Weaver, 9/27/85

Alabama Historical Commission

Facing S.

Photo number: 46



FULL SERVICE ISLAND
NO CASHING STOP ENGINE

WELCOME TO TAX STATE

LOCAL AND NATION WIDE
21 BUY-SELL-TRADE
KEY REALTY 435-5214

Coke
Coca-Cola



101 N. Pelham Rd.
Freeland's Automotive
Jacksonville, Alabama, Calhoun County

W. Weaver, 9/27/85
Alabama Historical Commission

Facing W.

Photo number: 47



Confederate Monument
(Public Square)

Jacksonville, Alabama, Calhoun County

W. Weaver, 10/4/85

Alabama Historical Commission

Facing N.

Photo number: 48

SHELTON
REAL ESTATE
& INSURANCE
PHONE 425-4150

ALL COUNTY COURTESY



109 E. Clinton St.
Shelton Building
Jacksonville, Alabama, Calhoun County

W. Weaver, 8/78
Alabama Historical Commission

Facing N.

Photo number: 49



107 E. Clinton St.
Glazner Dental Office
Jacksonville, Alabama, Calhoun County

W. Weaver, 10/4/85
Alabama Historical Commission

Facing N.

Photo number: 50



Lou's
CASUAL CORNER

Lou's

Bob's
Campus Sho

13 E. Public Sq.
Lou's Dress Shop
Jacksonville, Alabama, Calhoun County

W. Weaver, 8/17/81
Alabama Historical Commission

Facing W.

Photo number: 51



COVENANT
LUTHERAN
CHURCH

CRAVEN'S

SALE

SALE
CALLING THE DIALS

RCA

Jazz TV
AN ELECTRONIC
SALES - SERVICE

11 E. Public Sq.
Craven Building
Jacksonville, Alabama, Calhoun County

W. Weaver, 9/29/85
Alabama Historical Commission

Facing W.

Photo number: 52

Thee Country Shoppe

allmark

BALLOONS
BEST
PRICE



7 E. Public Sq.
Thee Country Shoppe
Jacksonville, Alabama, Calhoun County

W. Weaver, 9/29/85
Alabama Historical Commission

Facing W.

Photo number: 53



5 E. Public Sq.
Woods Building
Jacksonville, Alabama, Calhoun County

W. Weaver, 9/29/85
Alabama Historical Commission

Facing W.

Photo number: 54



3 E. Public Sq.

Paints-Crafts-Hobbies

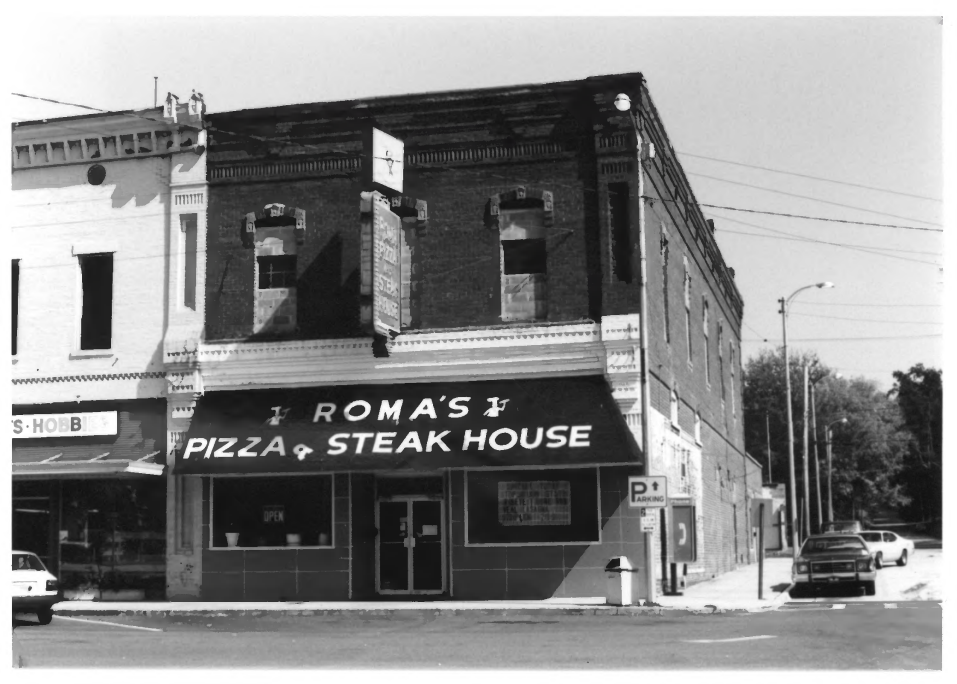
Jacksonville, Alabama, Calhoun County

W. Weaver, 9/29/85

Alabama Historical Commission

Facing W.

Photo number: 55



A black and white photograph of a two-story brick building. The ground floor has a dark awning with white text. The second floor has two arched window openings. A vertical sign is attached to the corner. To the left is a white building with a sign that says 'S-HOB'. To the right is a street with a parking sign, a trash can, and cars.

ROMA'S
PIZZA & STEAK HOUSE

P
PARKING

S-HOB

1 E. Public Sq.
Roma's Pizza and Steak House
Jacksonville, Alabama, Calhoun County

W. Weaver, 10/5/85
Alabama Historical Commission

Facing W.

Photo number: 56



E. Ladiga St.

Roma's Annex

Jacksonville, Alabama, Calhoun County

W. Weaver, 10/5/85

Alabama Historical Commission

Facing S.

Photo number: 56A

WEST REALTY

A black and white photograph of a single-story commercial building. The building has a light-colored facade and a prominent tiled awning that extends over the front entrance. The words "WEST REALTY" are mounted on the wall above the awning in large, dark, block letters. The entrance area is divided into several dark, recessed sections by light-colored columns. To the left, a portion of a two-story brick building with arched windows is visible. In the foreground, there is a paved street with a white line. Utility poles and power lines are visible in the background against a clear sky.

104 S. Pelham Rd.

Wood Building
Jacksonville, Alabama, Calhoun County

W. Weaver, 10/4/85

Alabama Historical Commission

Facing W.

Photo number: 57



JACKSONVILLE AUTO PARTS

ARE

101 E. Ladiga St.

Jacksonville Auto Parts

Jacksonville, Alabama, Calhoun County

W. Weaver, 9/29/85

Alabama Historical Commission

Facing N.

Photo number: 58

WEST ACE HARDWARE



105 E. Ladiga St.
West Ace Hardware
Jacksonville, Alabama, Calhoun County

W. Weaver, 9/78
Alabama Historical Commission

Looking S.

Photo number: 59

THE
Fabric
CENTER

W



109 E. Ladiga St.
The Fabric Center
Jacksonville, Alabama, Calhoun County

W. Weaver, 9/78
Alabama Historical Commission

Facing N.

Photo number: 60



116 E. Ladiga St.
Old Fire Station
Jacksonville, Alabama, Calhoun County

W. Weaver, 10/5/85
Alabama Historical Commission

Facing N.

Photo number: 61



116 E. Ladiga St.

Police Building

Jacksonville, Alabama, Calhoun County

W. Weaver, 10/5/85

Alabama Historical Commission

Facing N.

Photo number: 62



E. Drayton St.

West Ace Hardware Warehouse

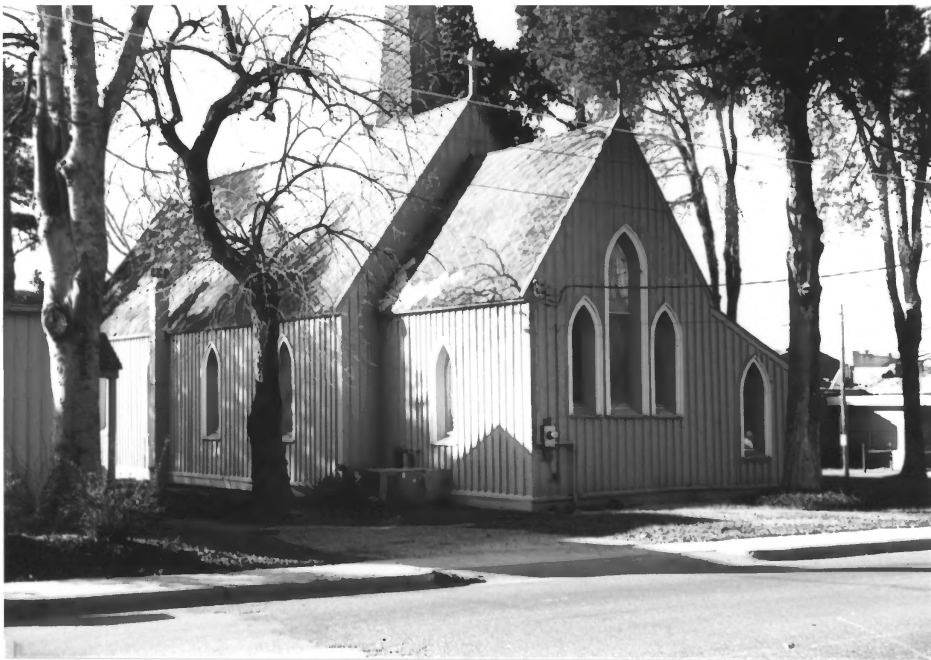
Jacksonville, Alabama, Calhoun County

W. Weaver, 5/12/85

Alabama Historical Commission

Facing N.

Photo number: 63



103 S. Chinabee Ave.
St. Luke's Episcopal Church
Jacksonville, Alabama, Calhoun County

W. Weaver, 10/4/85
Alabama Historical Commission

Facing W.

Photo number: 64



103 S. Chinabee Ave.
Daugette Memorial Parish House
Jacksonville, Alabama, Calhoun County

W. Weaver, 5/15/80
Alabama Historical Commission

Facing W.

Photo number: 65



263

205 S. Church Ave.

Ramagnano-Richardson House

Jacksonville, Alabama, Calhoun County

W. Weaver, 7/81

Alabama Historical Commission

Facing E.

Photo number: 66



300 S. Church Ave.

Jacksonville Fire Dept.

Jacksonville, Alabama, Calhoun County

W. Weaver, 9/27/85

Alabama Historical Commission

Facing W.

Photo number: 67



220 Carroll St.

Kelly-Lockett-Gidley House
Jacksonville, Alabama, Calhoun County

W. Weaver, 10/4/85

Alabama Historical Commission

Facing W.

Photo number: 68



310 E. Clinton St.
Hawkins-Steinberg House
Jacksonville, Alabama, Calhoun County

W. Weaver, 9/27/85
Alabama Historical Commission

Facing S.

Photo number: 69



312 E. Clinton St.
McDowell-Steinberg House
Jacksonville, Alabama, Calhoun County

W. Weaver, 5/12/85
Alabama Historical Commission

Facing S.

Photo number: 70



310 E. Ladiga St.

W. M. Nisbet House

Jacksonville, Alabama, Calhoun County

W. Weaver, 8/17/81

Alabama Historical Commission

Facing S.

Photo number: 71



400 E. Ladiga St.

Henderson House

Jacksonville, Alabama, Calhoun County

W. Weaver, 8/17/81

Alabama Historical Commission

Facing S.

Photo number: 72



408 E. Ladiga St.

Tate House

Jacksonville, Alabama, Calhoun County

W. Weaver, 8/17/81

Alabama Historical Commission

Facing S.

Photo number: 73



410 E. Ladiga St.
Woods-Smart House
Jacksonville, Alabama, Calhoun County

W. Weaver, 8/17/81
Alabama Historical Commission

Facing S.

Photo number: 74



420 E. Ladiga St.
Nisbet Weaver House
Jacksonville, Alabama, Calhoun County

W. Weaver, 8/17/81
Alabama Historical Commission

Facing W.

Photo number: 75



301 E. Ladiga St.

Kitchens-Glazner House

Jacksonville, Alabama, Calhoun County

W. Weaver, 6/29/79

Alabama Historical Commission

Facing N.

Photo number: 76



307 E. Ladiga St.
Arnold-Forster House
Jacksonville, Alabama, Calhoun County

W. Weaver, 8/17/81
Alabama Historical Commission

Facing N.

Photo number: 77



311 E. Ladiga St.

Luallen House

Jacksonville, Alabama, Calhoun County

W. Weaver, 8/17/81

Alabama Historical Commission

Facing N.

Photo number: 78



110 S. Thomas Avenue

Turnley-Battle-Burnham-Martin House

Jacksonville, Alabama, Calhoun County

W. Weaver, 8/15/85

Alabama Historical Commission

Facing W.

Photo number: 79



111 S. Thomas Avenue

Logan House

Jacksonville, Alabama, Calhoun County

W. Weaver, 8/17/81

Alabama Historical Commission

Facing E.

Photo number: 80



202 S. Church Avenue
Bethesda-Adams House
Jacksonville, Alabama, Calhoun County

W. Weaver, 10/4/85
Alabama Historical Commission

Facing W.

Photo number: 81



302 S. Church Avenue
Forney-Burton-Green House
Jacksonville, Alabama, Calhoun County

W. Weaver, 10/4/85
Alabama Historical Commission

Facing W.

Photo number: 82



302 S. Church Avenue
Forney-Burton-Green House
Jacksonville, Alabama, Calhoun County

W. Weaver, 10/4/85
Alabama Historical Commission

Facing W.

Photo number: 82a



Fleming-Casey House

Jacksonville, Alabama, Calhoun County

Worden Weaver, 1985

Alabama Historical Commission

Facing East

Photo number: A



Clarke-Ide House

Jacksonville, Alabama, Calhoun County

Worden Weaver, 1985

Alabama Historical Commission

Facing South

Photo number: B



SOUTH

21



UNI

JA

SA
JSH SP
1/2
S

Ramagnano Building

Jacksonville, Alabama, Calhoun County

Worden Weaver, 1985

Alabama Historical Commission

Facing North

Photo number: C



Lou's
CASUAL CORNER

Lou's

Bob's
Campus Sh

SALE
OFF

NO
LEFT TURN
ANYTIME

Lou's Dress Shop (former tavern)
Jacksonville, Alabama, Calhoun County

Worden Weaver, 1985
Alabama Historical Commission

Facing West

Photo number: D



Dr. Francis Medical Museum
Jacksonville, Alabama, Calhoun County

Worden Weaver, 1985
Alabama Historical Commission

Facing East

Photo number: E



St. Luke's Episcopal Church
Jacksonville, Alabama, Calhoun County

Worden Weaver, 1985
Alabama Historical Commission

Facing West

Photo number: F



TEXT BOOKS
STORE

100

Health For Everyone

Quality Shoppe

TOWN AND COUNTRY
REAL ESTATE INSURANCE

KAO PADING HEALTH CLUB



SHAVE UP FOR COLLEGE.
BE "GOOD-LOOKING" AT THE PLACE THIS SEASON.

NISSAN

Streetscape

Jacksonville, Alabama, Calhoun County

Worden Weaver, 1985

Alabama Historical Commission

West side of Public Square

Photo number: G



Streetscape

Jacksonville, Alabama, Calhoun County

Worden Weaver, 1985

Alabama Historical Commission

South side of E. Ladiga Street from Church Ave.

Photo number: H



Streetscape

Jacksonville, Alabama, Calhoun County

Worden Weaver, 1985

Alabama Historical Commission

South side of W. College St.

Photo number: I