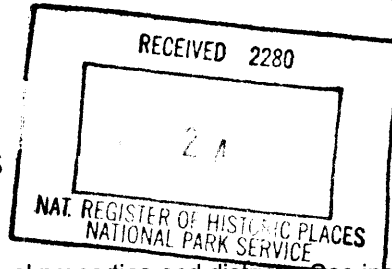


United States Department of the Interior  
National Park Service



# National Register of Historic Places Registration Form

This form is for use in nominating or requesting determination for individual properties and districts. See instruction in *How to Complete the National Register of Historic Places Registration Form* (National Register Bulletin 16A). Complete each item by marking "x" in the appropriate box or by entering the information requested. If an item does not apply to the property being documented, enter "N/A" for "not applicable." For functions, architectural classification, materials and areas of significance, enter only categories and subcategories from the instructions. Place additional entries and narrative items on continuation sheets (NPS Form 10-900a). Use a typewriter, word processor, or computer, to complete all items.

### 1. Name of Property

historic name Shirley Hotel

other names/site number Hotel Shirley; Johnson Meat Company; Haxtun Inn; 5PL37

### 2. Location

street & number 101 S. Colorado Avenue [N/A] not for publication

city or town Haxtun [N/A] vicinity

state Colorado code CO county Phillips code 095 zip code 80731

### 3. State/Federal Agency Certification

As the designated authority under the National Historic Preservation Act, as amended, I hereby certify that this  nomination  request for determination of eligibility meets the documentation standards for registering properties in the National Register of Historic Places and meets the procedural and professional requirements set forth in 36 CFR Part 60. In my opinion, the property  meets  does not meet the National Register criteria. I recommend that this property be considered significant  nationally  statewide  locally. ([ ] See continuation sheet for additional comments.)

Guerrina Contiguella State Historic Preservation Officer 12/12/01  
Signature of certifying official/Title Date

State Historic Preservation Office, Colorado Historical Society  
State or Federal agency and bureau

In my opinion, the property  meets  does not meet the National Register criteria.  
([ ] See continuation sheet for additional comments.)

\_\_\_\_\_  
Signature of certifying official/Title Date

\_\_\_\_\_  
State or Federal agency and bureau

### 4. National Park Service Certification

I hereby certify that the property is:

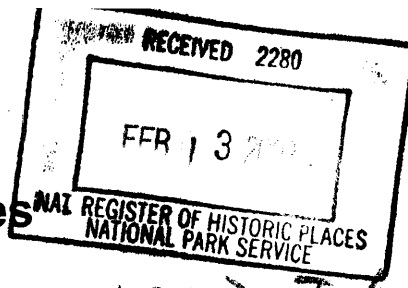
- entered in the National Register
  - determined eligible for the National Register
  - determined not eligible for the National Register
  - removed from the National Register
  - other, explain
- [ ] See continuation sheet.

Signature of the Keeper

Date of Action

Entered in the National Register  
3-28-02

United States Department of the Interior  
National Park Service



263

# National Register of Historic Places Registration Form

This form is for use in nominating or requesting determination for individual properties and districts. See instruction in *How to Complete the National Register of Historic Places Registration Form* (National Register Bulletin 16A). Complete each item by marking "x" in the appropriate box or by entering the information requested. If an item does not apply to the property being documented, enter "N/A" for "not applicable." For functions, architectural classification, materials and areas of significance, enter only categories and subcategories from the instructions. Place additional entries and narrative items on continuation sheets (NPS Form 10-900a). Use a typewriter, word processor, or computer, to complete all items.

## 1. Name of Property

historic name Shirley Hotel

other names/site number Hotel Shirley; Johnson Meat Company; Haxtun Inn; 5PL37

## 2. Location

street & number 101 S. Colorado Avenue [N/A] not for publication

city or town Haxtun [N/A] vicinity

state Colorado code CO county Phillips code 095 zip code 80731

## 3. State/Federal Agency Certification

As the designated authority under the National Historic Preservation Act, as amended, I hereby certify that this [X] nomination [ ] request for determination of eligibility meets the documentation standards for registering properties in the National Register of Historic Places and meets the procedural and professional requirements set forth in 36 CFR Part 60. In my opinion, the property [X] meets [ ] does not meet the National Register criteria. I recommend that this property be considered significant [ ] nationally [ ] statewide [X] locally. ([ ] See continuation sheet for additional comments.)

Georgianna Cortez State Historic Preservation Officer December 2, 2001  
Signature of certifying official/Title Date

State Historic Preservation Office, Colorado Historical Society  
State or Federal agency and bureau

In my opinion, the property [ ] meets [ ] does not meet the National Register criteria. ([ ] See continuation sheet for additional comments.)

Signature of certifying official/Title \_\_\_\_\_ Date \_\_\_\_\_

State or Federal agency and bureau \_\_\_\_\_

## 4. National Park Service Certification

I hereby certify that the property is:

<input checked="" type="checkbox"/> entered in the National Register [ ] See continuation sheet.	Signature of the Keeper <u>Beth Boland</u>	Date of Action <u>3/28/02</u>
<input type="checkbox"/> determined eligible for the National Register [ ] See continuation sheet.	_____	_____
<input type="checkbox"/> determined not eligible for the National Register.	_____	_____
<input type="checkbox"/> removed from the National Register	_____	_____
<input type="checkbox"/> other, explain [ ] See continuation sheet.	_____	_____

Shirley Hotel  
Name of Property

Phillips County, Colorado  
County/State

### 5. Classification

#### Ownership of Property

(Check as many boxes as apply)

- private
- public-local
- public-State
- public-Federal

#### Category of Property

(Check only one box)

- building(s)
- district
- site
- structure
- object

#### Number of Resources within Property

(Do not count previously listed resources.)

Contributing

Noncontributing

<u>1</u>	<u>0</u>	buildings
<u>0</u>	<u>0</u>	sites
<u>0</u>	<u>0</u>	structures
<u>0</u>	<u>0</u>	objects
<u>1</u>	<u>0</u>	Total

#### Name of related multiple property listing.

(Enter "N/A" if property is not part of a multiple property listing.)

N/A

#### Number of contributing resources previously listed in the National Register.

0

### 6. Function or Use

#### Historic Function

(Enter categories from instructions)

Hotel  
Specialty store  
Restaurant  
   
   
   
 

#### Current Functions

(Enter categories from instructions)

Hotel  
Restaurant  
   
   
   
 

### 7. Description

#### Architectural Classification

(Enter categories from instructions)

Commercial style  
   
   
   
 

#### Materials

(Enter categories from instructions)

foundation Concrete  
walls Brick  
   
roof Asphalt  
other Terra cotta  
 

#### Narrative Description

(Describe the historic and current condition of the property on one or more continuation sheets.)

**United States Department of the Interior**  
National Park Service

**National Register of Historic Places**  
**Continuation Sheet**

Shirley Hotel  
Phillips County, Colorado

Section number 7 Page 1

---

**DESCRIPTION**

The 1921 Shirley Hotel occupies the southwest corner at the intersection of South Colorado Avenue and Strohm Street in downtown Haxtun. The adjacent buildings consist of one and two-story commercial establishments.

The hotel is a two-story, L-shaped plan (approximately 51 ft. by 110 ft.), flat roofed building which fronts east onto Colorado Avenue (see photo 1). The dark red brick building facade contains a storefront with recessed entry and the main hotel entrance beneath a permanent canopy. The north elevation contains two additional storefronts and a new wheel chair accessible entry. Large tripartite windows are used along the north elevation and the upper story of the east elevation. All the windows on the north and east elevations utilize terra cotta sills and flat arches. Decorative terra cotta panels accent the second story of the parapet on the east elevations. The parapet coping is of terra cotta. A one-story addition fills part of the area within the L-plan.

The east elevation contains the main hotel entry (see photos 2 & 3). The slightly recessed entry is accessed from a one-step stoop. The glazed door is flanked on the south by an infilled sidelight. The transom has also been infilled. The entry is protected by a fixed wood canopy with a metal half-hipped roof. Large supporting brackets spring from flanking entry pilasters. The entry is flanked on each side by large wood frame single-light windows with transoms. The storefront to the south of the hotel entry consists of a central recessed entry with a glazed door accessed from a one-step stoop. A pair of display windows flanks each side of the entry. The kickplates are of wood. The entire storefront is topped by an large transom infilled with wood panels which supports a large "Haxtun Inn" sign.

The second story consists of four evenly-spaced bays. Each bay contains a tripartite window consisting of a large one-over-one sash with flanking narrow one-over-one sash. The wood frame windows are painted white and match the terra cotta lug sills. The upper area between each bay contains a square undecorated terra cotta plaque. The tall parapet contains a sign panel formed by a rowlock course of slightly darker red brick. The corners of the panel are accented by square terra cotta plaques. A diamond-shaped terra cotta plaque occupies the center of the sign panel. The parapet steps down at each corner and is capped with terra cotta.

On the north (Strohm Street) elevation, the first story contains seven bays (see photos 4 & 5). The first and third bays from the east retain their original configuration. These bays each contain a large center window flanked by narrow one-over-one sash, all topped by transoms. All the wood frame sash is painted white. The bottom of the third bay is surrounded by a short brick wall which protects a basement staircase. The second bay contains a new glazed door opening off of a wheel chair accessible wood ramp with wood railing. The remainder of the bay has been infilled with wood panels. The fourth bay has been modified to contain a pedestrian door. The

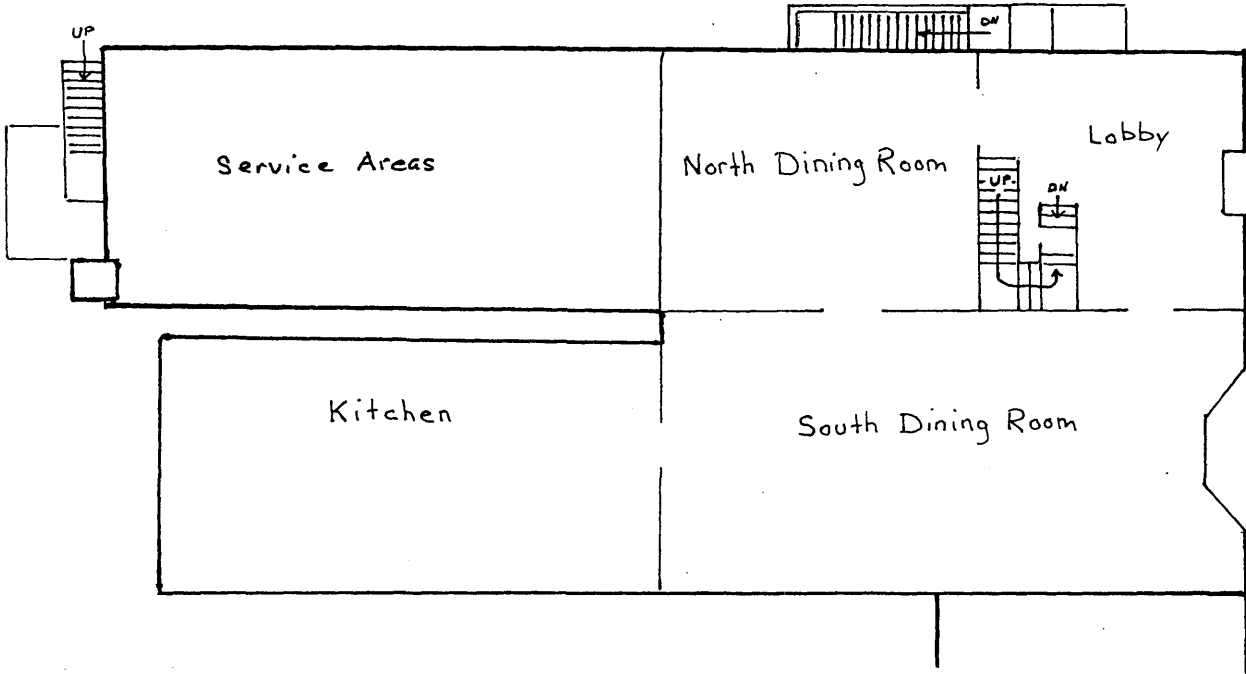
United States Department of the Interior  
National Park Service

National Register of Historic Places  
Continuation Sheet

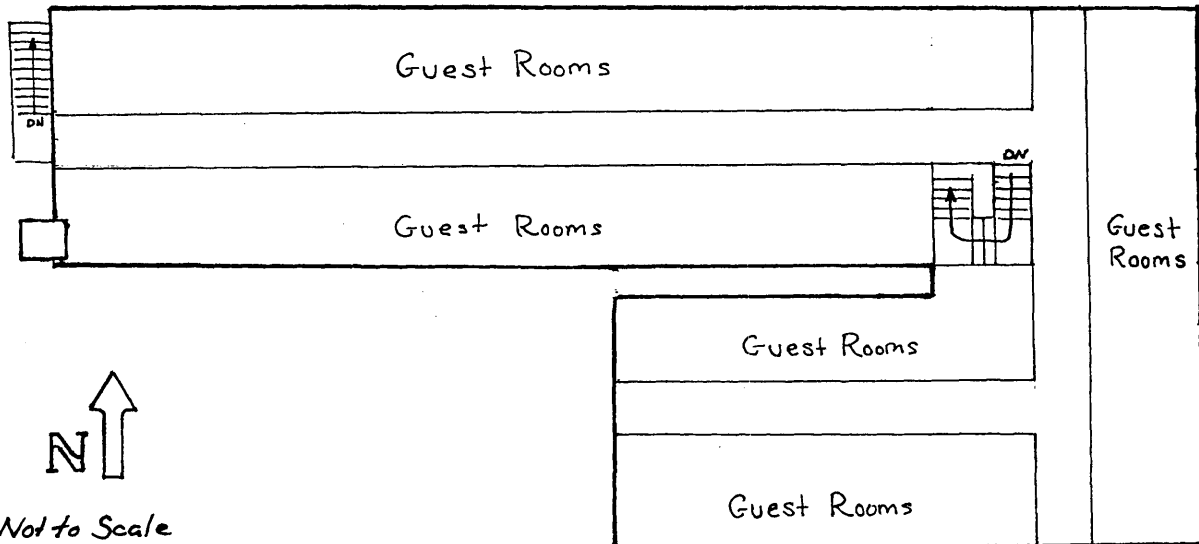
Section number 7 Page 2

Shirley Hotel  
Phillips County, Colorado

SKETCH PLAN



First Floor



N ↑  
Not to Scale

Second Floor

**United States Department of the Interior  
National Park Service**

**National Register of Historic Places  
Continuation Sheet**

Section number 7 Page 3

Shirley Hotel  
Phillips County, Colorado

---

half-light door replaces the center window. The door is topped by a short transom. The fifth bay retains its original configuration, though the transoms are covered by wood panels. The sixth bay is the only original storefront on the elevation. This entry most likely provided access to the original Shirley Hotel café. The four-light wood panel door is flanked by one-over-one sash. The transoms are all covered with wood panels. The last bay has been modified into a storefront in the same manner as the fourth bay. The second floor consists of eleven bays. The majority are composed of pairs of one-over-one sash with terra cotta sills. The remaining three bays are shorter single one-over-one sash. The tops of the sash form a single plane. The parapet repeats the design of the facade, though two diamond-shaped panels are used within the sign panel.

The west elevation of the long leg of the L-shaped plan contains two one-over-one first-story sash and a single one-over-one on the second story (see photos 5 & 6). The second story also contains a half-light wood paneled door leading to a metal fire escape. The common brick on the west and south elevations is of variegated red in lighter shades than the street elevations. A large square chimney rises along the south corner. A metal gutter follows the roof edge and drains into a downspout which runs down the wall near the north corner. A vertical wood plank fence encloses a small courtyard beneath the fire escape.

The long portion of south elevation is obscured on the first story by a stuccoed addition (see photo 6). The upper portion contains five one-over-one sash with rowlock sills. Two rectangular chimneys rise above the short parapet. The west elevation of the short leg of the L-plan is also covered by the one-story addition. The second-story contains two pairs of one-over-one sash which flank a half-light door with transom. The west elevation of the one-story, flat-roofed, stuccoed addition contains a half-light door and a paneled door accesses a walk-in refrigerator. The south elevation of the addition contains four single-light windows.

The two-story south elevation of the short leg of the L-plan abuts an adjoining one-story commercial building (see photo 3). The visible second-story contains two one-over-one sash. The parapet steps down toward the west.

**INTERIOR**

The major interior partitions and corridors remain intact. The former hotel lobby is now the lobby for the restaurant and the second-floor bed and breakfast (see photos 7, 8 & 9). The original wood panel doors and trim remain at the entrance to the north dining room. Carpet now covers the original wood floor and a new wood shelving unit surrounds the door to the south dining room. The stairs to the basement and second floor are both original, though the short balustrade on the basement stairs has been removed. The ceiling is covered by acoustical tile.

United States Department of the Interior  
National Park Service

National Register of Historic Places  
Continuation Sheet

Section number 7 Page 4

Shirley Hotel  
Phillips County, Colorado

The south dining room occupies the former Colorado Ave. storefront (see photos 10, 11 & 12). The rehabilitated space includes new carpeting, wainscoting, and ceiling tile. The rear addition houses the restaurant kitchen. The north dining room occupies the space previously used by the hotel's café (see photos 13, 14, 15 & 16). This rehabilitated space also includes new carpeting, wainscoting, and ceiling tile.

The two-landing wraparound staircase is original (see photos 18 & 19). The second-floor retains its original corridors and woodwork, including doors, frames and transoms (see photos 20, 21, 24 & 26). Some rooms have been joined together to create larger spaces and new bathrooms have been added as part of ongoing rehabilitation (see photos 22 & 23).

#### ALTERATIONS

The exterior has changed little since 1921. On the north elevation some alteration has occurred in the first-story fenestration (see photo 27). Changes include the addition of a wheel chair ramp and associated door and the modification of two bays to include pedestrian doors. On the east elevation, only minor changes have been made to the hotel door and storefront transoms.

A small one-story cinder block addition was added at the rear of the existing one-store section at a recent but unknown date. The addition is not visible from either primary elevation.

On the interior, major public rooms and corridors remain intact, as does the main staircase (see photo 28). New carpets, wall coverings and ceiling tiles have been added throughout the first floor. The second floor retains most of its original design, materials and workmanship. Original corridors remain throughout. Some rooms have been joined to create larger spaces.



Shirley Hotel in circa 1921

Shirley Hotel  
Name of Property

Phillips County, Colorado  
County/State

## 8. Statement of Significance

### Applicable National Register Criteria

(Mark "x" in one or more boxes for the criteria qualifying the property for National Register listing.)

- A** Property is associated with events that have made a significant contribution to the broad patterns of our history.
- B** Property is associated with the lives of persons significant in our past.
- C** Property embodies the distinctive characteristics of a type, period, or method of construction or represents the work of a master, or possesses high artistic values, or represents a significant and distinguishable entity whose components lack individual distinction.
- D** Property has yielded, or is likely to yield, information important in prehistory or history.

### Criteria Considerations

(Mark "x" in all the boxes that apply.)

Property is:

- A** owned by a religious institution or used for religious purposes.
- B** removed from its original location.
- C** a birthplace or grave.
- D** a cemetery.
- E** a reconstructed building, object, or structure.
- F** a commemorative property.
- G** less than 50 years of age or achieved significance within the past 50 years.

### Narrative Statement of Significance

(Explain the significance of the property on one or more continuation sheets.)

## 9. Major Bibliographical References

### Bibliography

(Cite the books, articles and other sources used in preparing this form on one or more continuation sheets.)

### Previous documentation on file (NPS):

- preliminary determination of individual listing (36 CFR 67) has been requested
- previously listed in the National Register
- previously determined eligible by the National Register
- designated a National Historic Landmark
- recorded by Historic American Buildings Survey  
# \_\_\_\_\_
- recorded by Historic American Engineering Record  
# \_\_\_\_\_

### Areas of Significance

(Enter categories from instructions)

Commerce

Architecture

### Periods of Significance

1921-1951

### Significant Dates

N/A

### Significant Person(s)

(Complete if Criterion B is marked above).

N/A

### Cultural Affiliation

N/A

### Architect/Builder

Unknown

### Primary location of additional data:

- State Historic Preservation Office
- Other State Agency
- Federal Agency
- Local Government
- University
- Other

Name of repository:

Colorado Historical Society



**United States Department of the Interior  
National Park Service**

**National Register of Historic Places  
Continuation Sheet**

Section number 8 Page 5

Shirley Hotel  
Phillips County, Colorado

---

**SIGNIFICANCE**

The 1921 Shirley Hotel is eligible for the National Register under Criterion A in the area of commerce for its long association with the commercial history of Haxtun. The Shirley functioned as the community's last and longest operating hotel, providing lodging and meals to railroad and automobile travelers. Opened just as Colorado's farm economy began to slip into recession, the hotel weathered the Great Depression and the war years which followed, only to struggle in the post-war period as new tourist and business travel patterns further reduced the hotel's clientele. The hotel closed in 1971. Its current revival as a restaurant and bed-and-breakfast has returned the building to its traditional use. The period of significance begins with the building's construction in 1921 and ends in 1951 when the Shirley continued to function as a hotel and commercial building.

The building is also eligible under Criterion C for its architectural significance. The building is a good intact example of an early 1920s commercial building built to accommodate a small town hotel and various related commercial enterprises. The two-story form, brick construction with simple terra cotta detailing, multiple storefront configuration and corner location all are typical of a hotel building of its geographical and chronological context.

The Lincoln Land Company founded and platted Haxtun in 1888. The company, a subsidiary of the Burlington and Missouri Railway (later the Chicago, Burlington & Quincy), established several northeastern Colorado towns as the railroad built westward toward Denver. Originally the town's name was Haxtum. Several stories are available to explain the name. It may be that the name originated from the name of a land company contractor. It may have been meant to honor an important shipper along the rail line. There were also reports that a Lincoln Land Co. employee named it for his home in New York.

The agricultural community grew slowly but steadily. By 1906 the community claimed a population of 100. Two years later the total reached 150 and by the following year, when the town incorporated, citizens numbered close to 400. The cultivation of sugar beets and corn along with livestock raising were important economic regional activities. The community served as the local shipping and supply center.

The issue of the town's name apparently came to a head in the 1910s. State business directories for the period note that the town's official name, at least as used by the Post Office, was Haxtum. However, the directories also note that the Burlington railroad station was named Haxtun. Individual business listings consistently used the Haxtun name. On January 17, 1922, the U.S. Post Office officially changed the town's name to Haxtun.

Haxtun continued to grow during the agriculturally prosperous World War I years, a period that saw the community's population rise from 550 in 1917 to 1,200 by 1920. The downturn in the

**United States Department of the Interior  
National Park Service**

**National Register of Historic Places  
Continuation Sheet**

Section number 8 Page 6

Shirley Hotel  
Phillips County, Colorado

---

farm economy during the 1920s resulted in a leveling of community growth. As the entire nation slid into the Depression of the 1930s, the town's population began a slow decline. By the eve of World War II residents numbered below a thousand. Population in 2000 was 982.

Haxtun has offered a variety of lodgings for the accommodation of train travelers and other visitors. Walter Scott operated a hotel from 1906 to 1908. J.J. Hubbell offered similar services in 1909 and his wife advertised the availability of furnished rooms during 1910 and 1911. The first hotel to obtain a significant degree of longevity was the Central Hotel. J.A. Montieth opened the hotel in 1910 and operated it until 1913. A succession of eleven proprietors maintained the hotel until its closing in the mid-1940s.

George Merryfield opened the Haxtun Hotel in 1912 as a sideline to his hay, grain, coal and feed business. Merryfield sold the hotel the following year to E.M. Clutter and he was followed by a series of proprietors until the hotel closed its doors in 1927. The second Haxtun Hotel building still stands on the southwest corner of Colorado Ave. and Fletcher Street. The second-floor hotel space now functions as apartments and the first-story storefronts are vacant.

The Shirley Hotel opened for business in 1921 under the management of Elizabeth Johnson. Her husband, Charles, ran a meat market out of the hotel's storefront. A large ad in the 1921 *State Business Directory* proclaimed the Shirley Hotel and Café to be new and thoroughly modern. Among its advertised amenities were hot and cold running water and electric lights. The hotel operated on the European plan, meaning meals were not included in the price of a room. However, the hotel boasted of its connected café.

The Johnsons came to Haxtun about 1910. Charles served as town marshal from 1910 until 1913. He also went into partnership with O.W. Lohn in the operation of a meat market. The Lohn and Johnson partnership lasted until 1920 when Johnson took over as sole operator.

Elizabeth Johnson filed a building permit request for the hotel in April 1920 and received approval. Nels Larson served as the general contractor. The property deeds indicate that Edward Intermill owned the property from 1908, selling it to Elizabeth Johnson in April of 1922. Based on business directory listings and the December 1921 Sanborn insurance map, the hotel appears to have been in operation by the end of 1921.

Architecturally, the hotel building is typical in design and materials to many early twentieth century small town hotels. The two-story design allowed the hotel to accommodate a moderately-sized clientele on its quieter second floor while much of the first floor could be rented for retail enterprises needing direct access to foot and vehicular traffic. The retail activities could either relate directly to the hotel operation, as in the case of a restaurant, or they could be part of the general community commercial mix. A corner location also characterizes buildings of this

**United States Department of the Interior  
National Park Service**

**National Register of Historic Places  
Continuation Sheet**

Section number 8 Page 7

Shirley Hotel  
Phillips County, Colorado

---

type, maximizing rentable retail space by offering two street-front elevations, while also accommodating a greater number of hotel rooms with street-facing windows. The Shirley Hotel building followed this pattern with its prominent first-floor corner lobby, primary retail storefront on the facade and a series of secondary storefronts along the cross street elevation.

The style, plan and materials of the Shirley Hotel also typify early twentieth century commercial architecture. The large storefront windows and regularly spaced second-story fenestration, the brick sheathing and simple ornamentation in the form of terra cotta tiles, and the parapeted flat roof form are all common design elements. The continued existence of the once commonly found fixed canopy over the hotel entry add to the Shirley's integrity and architectural importance. Such buildings have grown increasingly rare as deterioration, demolition, or replacement have reduced the numbers of intact examples.

Elizabeth Johnson's ownership of the hotel was extremely short. Just five months after becoming the owner of the Shirley Hotel, she sold the building to Benjamine Anderson on September 30, 1922. The 1923 business directory still lists her as the hotel's proprietor. The 1924 directory includes a large ad for the hotel showing R.C. Stevens and Mrs. Ethel Stevens as the new proprietors. The ad touted the same amenities as the 1921 ad and also indicates the availability of long distance phone service.

The Stevens lasted about a year before giving way to a series of hotel managers, none of whom persisted more than two or three years. The only exception seems to be June Evans. She purchased the building in 1949 and ran the hotel throughout the 1950s. Most of the hotels managers did not own the building. During at least two periods, 1933-1946 and 1967-1971, the owner was a savings and loan, indicating possible property foreclosures.

The hotel's first proprietor, Elizabeth Johnson, went on to manage the Haxtun Hotel in 1925-1926 and then ran a beauty parlor from 1927 to 1930. Her husband continued to operate the Johnson Meat Company out of the hotel building storefront until 1930. A later occupant of the storefront space may have been H. Ruby who operated a grocery store in 1937 while his wife ran the hotel. Other Colorado Avenue storefront businesses included Boyd Grocery and the Rake Gift Shop. The north (Strohm Street) storefronts have been used as a laundromat, beauty shop and pool hall.

The history of the Shirley Hotel is closely tied to the general commercial history of Haxtun. The hotel depended on the local economy and the available pool of largely commercial travelers for its clientele. The hotel opened as the farm and then general economy drifted into recession. The rapid turnover of hotel managers reflects the difficulty of establishing a profitable operation. The prosperity of the post World War II era also brought shifts in travel patterns and modes of transportation. The passenger trains disappeared to be replaced by long-distance automobile travel. The coming of the Interstate Highway system in the late

**United States Department of the Interior  
National Park Service**

**National Register of Historic Places  
Continuation Sheet**

Section number 8 Page 8

Shirley Hotel  
Phillips County, Colorado

1950s and 1960s further shifted travelers away former popular highway routes like U.S. Highway 6 through Haxtun. The traveling salesman that formed much of clientele for small town hotels largely disappeared in the post war period. While the Shirley Hotel's storefront space could be occupied by enterprises designed to serve the local residents, the hotel required a steady flow of out of town travelers. The hotel closed in 1971.

The current owner, Carole Borra, purchased the building in 2000. She and her husband have rehabilitated the former café and storefront space into a restaurant and lounge. The second-floor hotel rooms are also being rehabilitated into a bed & breakfast.

As the largest, longest and last operating, and most intact of the community's hotels, the Shirley Hotel building is an important part of Haxtun's commercial history.



Shirley Hotel lobby in 1921

**United States Department of the Interior  
National Park Service**

**National Register of Historic Places  
Continuation Sheet**

Section number 9-10 Page 9

Shirley Hotel  
Phillips County, Colorado

---

**BIBLIOGRAPHY**

Bauer, William H., James L. Ozment and John H. Willard. *Colorado Post Offices: 1859-1989*. Golden, CO: Colorado Railroad Museum, 1990.

Benson, Maxine. *1001 Colorado Place Names*. Lawrence, KS: Univ. of Kansas Press, 1994.

Building Permit, Lot 1, Block 6, April 7, 1920.

Gazetteer Publishing & Printing Co. *Colorado State Business Directories*. Denver: Gazetteer Publishing & Printing Co.: 1906 – 1943.

Hafen, Le Roy Reuben. *Colorado and Its People: A Narrative and Topical History of the Centennial State*. New York: Lewis Historical Publishing Co., 1948.

*Haxtun December 1921 Sanborn Insurance Map*. New York: Sanborn Map Company, 1922.

Rocky Mountain Directory Co. *Colorado State Directory of Business and Industry*. Colorado Springs: Rocky Mountain Directory Co.: 1950 and 1953.

**GEOGRAPHICAL DATA**

**VERBAL BOUNDARY DESCRIPTION**

Lots 1 and 2, Block 6, Original Town of Haxtun, Phillips County, Colorado.

**BOUNDARY JUSTIFICATION**

The nomination includes all the land historically associated with the hotel building.

Shirley Hotel  
Name of Property

Phillips County, Colorado  
County/State

## 10. Geographical Data

Acreage of Property less than one

### UTM References

(Place additional UTM references on a continuation sheet.)

1. 13 700560 4501540  
Zone Easting Northing

3. Zone Easting Northing

2. Zone Easting Northing

4. Zone Easting Northing

[ ] See continuation sheet

### Verbal Boundary Description

(Describe the boundaries of the property on a continuation sheet.)

### Boundary Justification

(Explain why the boundaries were selected on a continuation sheet.)

## 11. Form Prepared By

name/title Alice Bamford

organization \_\_\_\_\_ date September 11, 2001

street & number 200 Iris telephone \_\_\_\_\_

city or town Haxtun state CO zip code 80731

## Additional Documentation

Submit the following items with the completed form:

### Continuation Sheets

### Maps

A USGS map (7.5 or 15 minute series) indicating the property's location.

A Sketch map for historic districts and properties having large acreage or numerous resources.

### Photographs

Representative black and white photographs of the property.

### Additional Items

(Check with the SHPO or FPO for any additional items)

## Property Owner

(Complete this item at the request of SHPO or FPO.)

name Carole Borra

street & number 101 S. Colorado Avenue telephone \_\_\_\_\_

city or town Haxtun state CO zip code 80731

**United States Department of the Interior  
National Park Service**

**National Register of Historic Places  
Continuation Sheet**

Shirley Hotel  
Phillips County, Colorado

Section number \_\_\_ Page 10

**PHOTOGRAPH LOG**

The following information pertains to photograph numbers 1- 26, except as noted:

Name of Property: Shirley Hotel  
Location: 101 S. Colorado Ave., Haxtun, Phillips County  
Photographer: Alice Bamford  
Date of Photographs: May 17, 2001  
Negatives: Office of Archaeology and Historic Preservation  
Colorado Historical Society, 1300 Broadway  
Denver, CO 80203

<u>Photo No.</u>	<u>Photographic Information</u>
1	East and north elevations; view to the southwest.
2	East elevation; view to the west.
3	East elevation and partial south elevation; view to the northwest.
4	East and north elevations; view to the southwest.
5	North and west elevations; view to the southeast.
6	West and south elevations; view to the northeast.
7	Lobby and entry to restaurant; view to the west.
8	Lobby with staircase; view to the southwest.
9	Lobby and restaurant entrance; view to the south.
10	South dining room; view to the west.
11	South dining room; view to the southwest.
12	South dining room; view to the west.
13	North dining room.
14	North dining room.
15	North dining room; view to the southeast.
16	North dining room; view to the south.
17	Lobby clock; view to the south.
18	Second floor hallway; view to northwest.
19	Down staircase from second floor; view to the southeast.
20	Second floor hallway; view to the south.
21	Second floor hallway; view to the north.
22	Second floor rehabilitated guest room.
23	Second floor guest room entrance.
24	Hallway to south side rooms; view to the west.
25	Restroom awaiting rehabilitation.
26	Second floor hallway; view to the west.

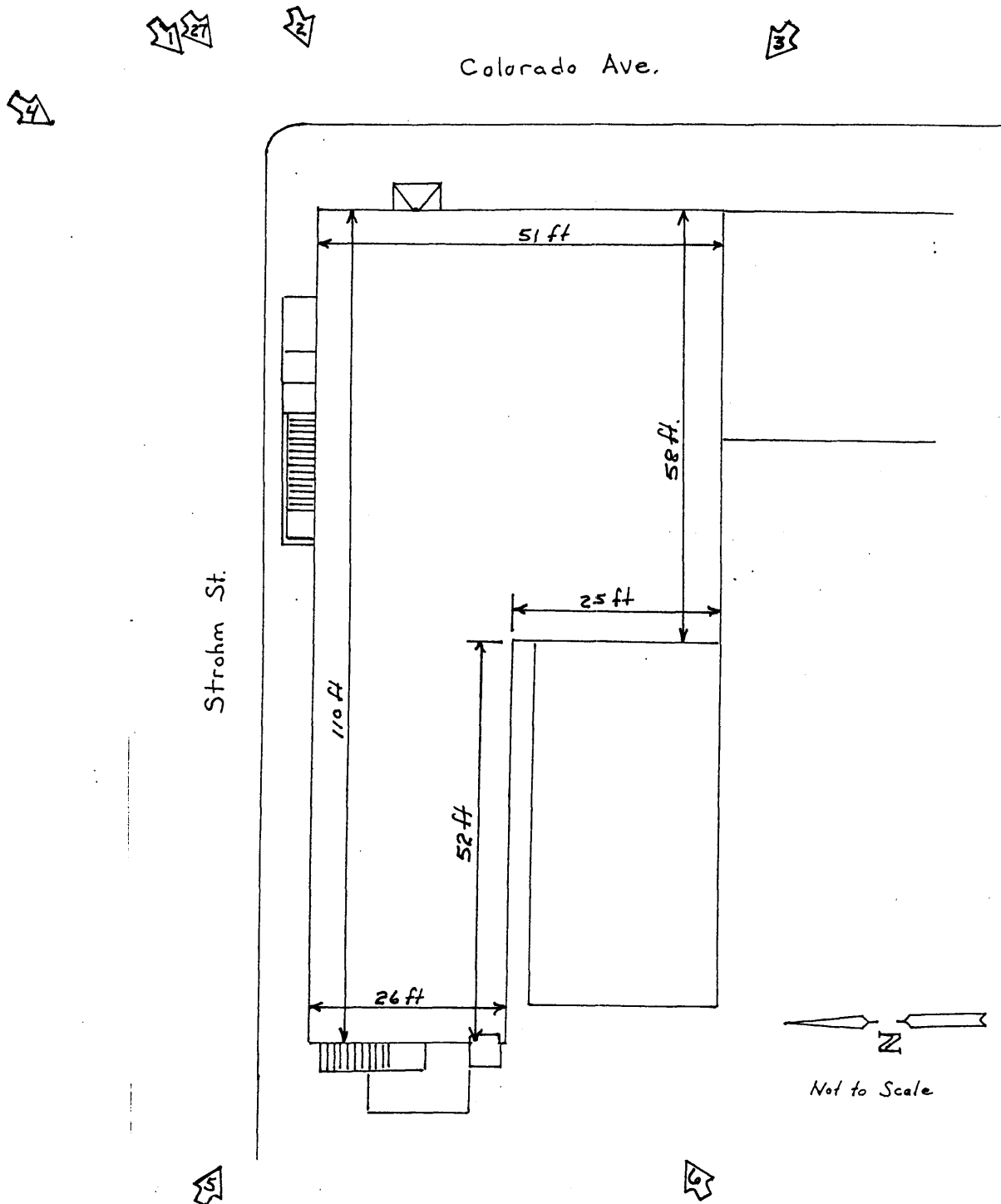
United States Department of the Interior  
National Park Service

National Register of Historic Places  
Continuation Sheet

Section number \_\_\_ Page 11

Shirley Hotel  
Phillips County, Colorado

Site Plan with Photograph Views





United States Department of the Interior  
National Park Service

National Register of Historic Places  
Continuation Sheet

Section number \_\_\_ Page 12

Shirley Hotel  
Phillips County, Colorado

USGS TOPOGRAPHIC MAP  
Haxtun West Quadrangle, Colorado  
7.5 Minute Series, 1962

