



UNITED STATES DEPARTMENT OF THE INTERIOR
NATIONAL PARK SERVICE

NATIONAL REGISTER OF HISTORIC PLACES

PROPERTY PHOTOGRAPH FORM

(Type all entries - attach to or enclose with photograph)

STATE Georgia	
COUNTY Wilkes	
FOR NPS USE ONLY	
ENTRY NUMBER APR 11 1972	DATE

SEE INSTRUCTIONS

1. NAME

COMMON: Poplar Corner

AND/OR HISTORIC: Prince-Pope-Simpson-Stephens House

2. LOCATION

STREET AND NUMBER:
210 West Liberty Street

CITY OR TOWN:
Washington

STATE:
Georgia

CODE
13

COUNTY:
Wilkes

CODE
317

3. PHOTO REFERENCE

PHOTO CREDIT: Jet Lowe

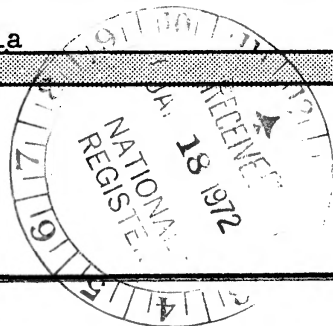
DATE OF PHOTO: December, 1970

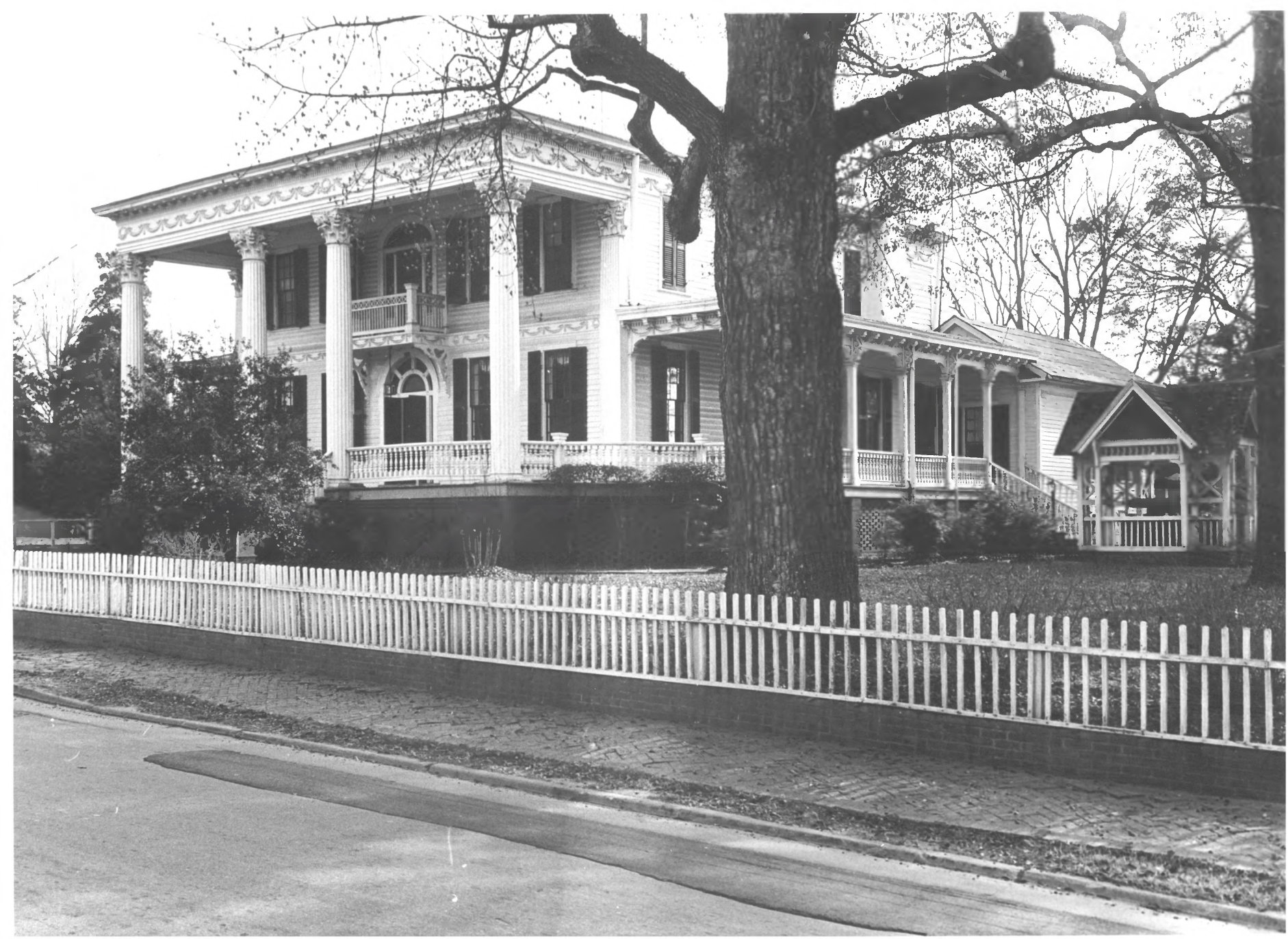
NEGATIVE FILED AT: Georgia Historical Commission
116 Mitchell Street, Atlanta, Georgia

4. IDENTIFICATION

DESCRIBE VIEW, DIRECTION, ETC.

South facade
Rear view and outbuilding





UNITED STATES DEPARTMENT OF THE INTERIOR
NATIONAL PARK SERVICE

NATIONAL REGISTER OF HISTORIC PLACES
PROPERTY PHOTOGRAPH FORM

(Type all entries - attach to or enclose with photograph)

STATE Georgia	
COUNTY Wilkes	
FOR NPS USE ONLY	
ENTRY NUMBER APR 11 1972	DATE

1. NAME

COMMON: Poplar Corner

AND/OR HISTORIC: Prince-Pope-Simpson-Stephens House

2. LOCATION

STREET AND NUMBER:

210 West Liberty Street

CITY OR TOWN:

Washington

STATE:

Georgia

CODE

13

COUNTY:

Wilkes

CODE

317

3. PHOTO REFERENCE

PHOTO CREDIT: Jet Lowe

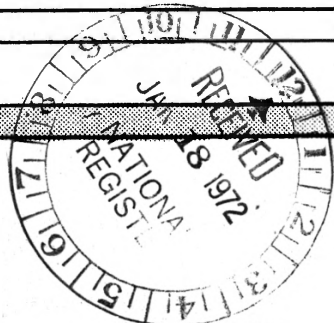
DATE OF PHOTO: December, 1970

NEGATIVE FILED AT: Georgia Historical Commission
116 Mitchell Street, Atlanta, Georgia

4. IDENTIFICATION

DESCRIBE VIEW, DIRECTION, ETC.

South Façade, three-quarter view



SEE INSTRUCTIONS