



Wallis - O. A. C. Quarter Centennial Jubilee

L.G. Kline Building  
146 SW 2nd & 219 SW Madison  
Corvallis, Oregon Benton County

Kline Bldg. (on right) looking  
West on Madison from 2nd Street, 1893.

L. & B. Boudreaux  
3220 NW Manzanita Pl.  
Corvallis, OR. 97330



Ab  
nial Jubilee

L.G. KLINE BUILDING

146 SW 2nd, Corvallis, Benton County, Oregon

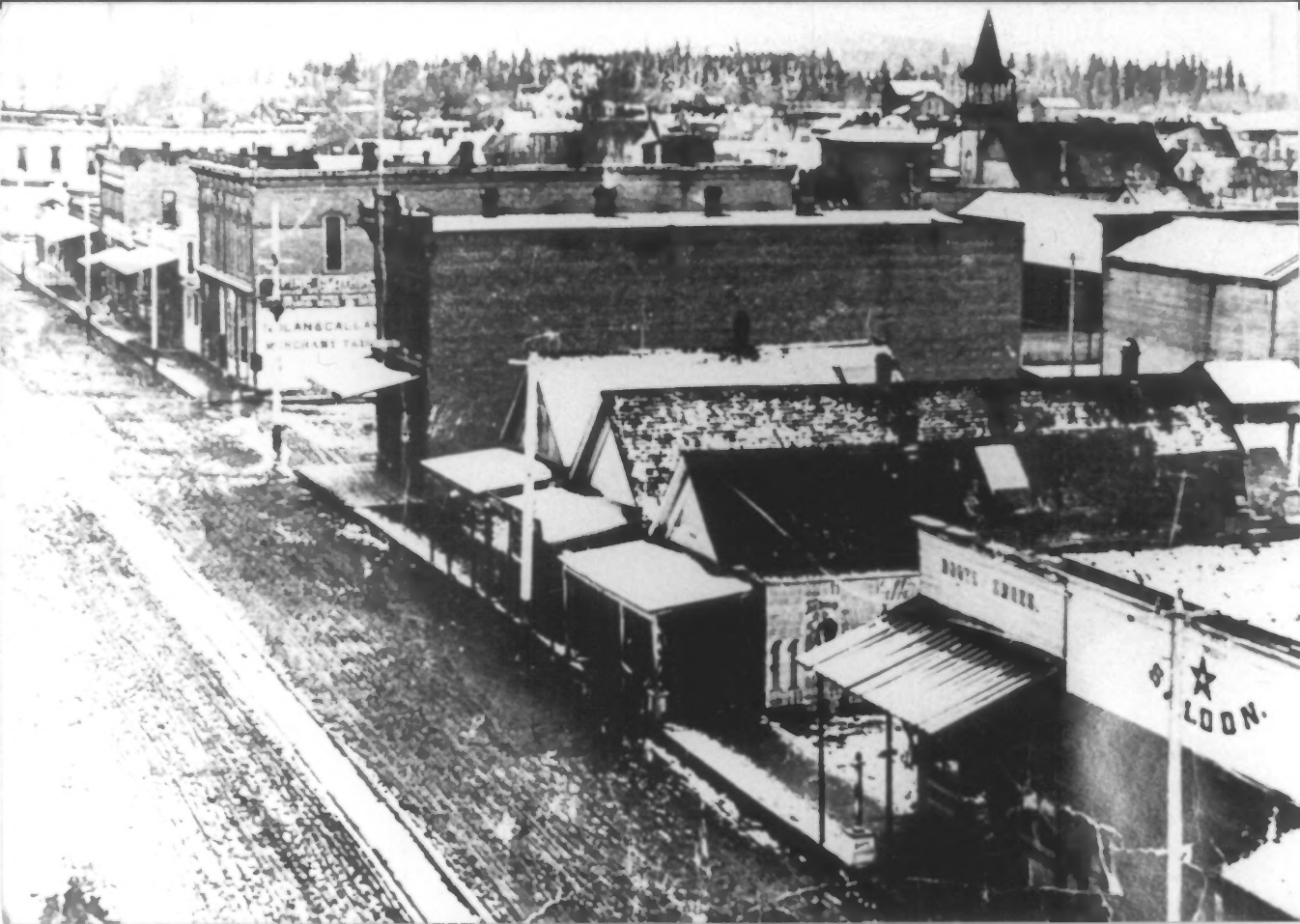
photographer unknown (enlargement of photograph no. 1)

1893-photograph (year of Oregon Agricultural College 25-year gala)  
negative on file Benton County Historical Museum\*

photograph taken at the corner of 2nd and Madison Streets

looking west/northwest

\*P.O. Box 47, Philomath, OR 97370



L.G. Kline Building  
146 SW 2nd & 219 SW Madison  
Corvallis, Oregon Benton County

Looking South toward 2nd and  
Madison, (Ca. 1895)

L. & B. Boudreaux  
3220 NW Manzanita Pl.  
Corvallis, OR. 97330



L.G. Kline Building  
146 SW 2nd & 219 SW Madison  
Corvallis, Oregon      Benton County

Looking South toward 2nd &  
Madison, (WW I era photograph)

L. & B. Boudreaux  
3220 NW Manzanita Pl.  
Corvallis, OR.      97330





FREE CUSTOMER SERVICE  
FOR ALL OUR PRODUCTS  
CALL 1-800-555-1234

1234  
5678

L.G. Kline Building  
146 SW 2nd & 219 SW Madison  
Corvallis, Oregon Benton County

East and South Elevations (1985)

L. & B. Boudreaux  
3220 NW Manzanita Pl.  
Corvallis, OR. 97330



L.G. Kline Building  
146 SW 2nd & 219 SW Madison  
Corvallis, OR. 97330 Benton County

South and West Elevations (1985)

L. & B. Boudreaux  
3220 NW Manzanita Pl.  
Corvallis, OR. 97330



146

L.G. Kline Building  
146 SW 2nd & 219 SW Madison  
Corvallis, Oregon Benton County

East Elevation, Main Facade (1985)

L. & B. Boudreaux  
3220 NW Manzanita Pl.  
Corvallis, OR. 97330



L.G. Kline Building  
146 SW 2nd & 219 SW Madison  
Corvallis, Oregon Benton County

Context Photo: Looking North  
on 2nd, Kline Bldg. (left),  
Benton County Bank (right) a  
Historic Register property, and  
in (right) background, the  
Julian Hotel, another National  
Register property. 1985

L. & B. Boudreaux  
3220 NW Manzanita Pl.  
Corvallis, OR. 97330





L.G. Kline Building  
146 SW 2nd & 219 SW Madison  
Corvallis, Oregon Benton County

Detail of Main Facade illustrating  
pressed metal facade including  
pilasters and entablature. 1985.

L. & B. Boudreaux  
3220 NW Manzanita Pl.  
Corvallis, OR. 97330



L.G. Kline Building  
146 SW 2nd & 219 SW Madison  
Corvallis, Oregon Benton County

Detail of Main Facade illustrating  
pressed metal elements. 1985.

L. & B. Boudreaux  
3220 NW Manzanita Pl.  
Corvallis, OR. 97330



L.G. Kline Building  
146 SW 2nd & 219 SW Madison  
Corvallis, Oregon      Benton County

Detail of main facade illustrating  
pressed metal elements.      1985.

L. & B. Boudreaux  
3220 NW Manzanita Pl.  
Corvallis, OR.      97330



L.G. Kline Building  
146 SW 2nd & 219 SW Madison  
Corvallis, Oregon Benton County

Rear (west) elevation and  
storefront on south elevation.  
1985.

L. & B. Boudreaux  
3220 NW Manzanita Pl.  
Corvallis, OR. 97330





L.G. Kline Building  
146 SW 2nd & 219 SW Madison  
Corvallis, Oregon Benton County

Looking east, first floor  
retail space. 1985

L. & B. Boudreaux  
3220 NW Manzanita Pl.  
Corvallis, OR. 97330



L.G. Kline Building  
146 SW 2nd & 219 SW Madison  
Corvallis, Oregon Benton County

Detail of pressed metal ceiling,  
first floor interior retail  
space. 1985.

L. & B. Boudreaux  
3220 NW Manzanita Pl.  
Corvallis, OR. 97330