



4642

United States Department of the Interior  
National Park Service

# National Register of Historic Places Registration Form

This form is for use in nominating or requesting determinations for individual properties and districts. See instructions in National Register Bulletin, *How to Complete the National Register of Historic Places Registration Form*. If any item does not apply to the property being documented, enter "N/A" for "not applicable." For functions, architectural classification, materials, and areas of significance enter only categories and subcategories from the instructions.

## 1. Name of Property

Historic Name: Palmerdale Homesteads Historic District  
Other names/ site number: Palmer Station  
Name of related multiple property listing: \_\_\_\_\_  
*(Enter N/A if property is not part of a multiple property listing)*

## 2. Location

Street & number: Parts of Miles Springs Road, North and South Valley Roads, Brookwood Road, Southfield Road N. and S., Helms Circle, Highway 75, Midwood Road, Marsh Mountain Road, and West Hill Road  
City/Town: Pinson State: AL County: Jefferson  
Not for Publication: \_\_\_\_\_ Vicinity: \_\_\_\_\_

## 3. State/Federal Agency Certification

As the designated authority under the National Historic Preservation Act, as amended, I hereby certify that this  nomination  request  determination of eligibility meets the documentation standards for registering properties in the National Register of Historic Places and meets the procedural and professional requirements set forth in 36 CFR Part 60. In my opinion, the property  meets  does not meet the National Register criteria.

I recommend this property be considered significant at the following level(s) of significance:  
 National  Statewide  Local

Applicable National Register Criteria:  A  B  C  D

Lee Anne Wofford /Deputy State Historic Preservation Officer October 4, 2019  
Signature of certifying official/Title \_\_\_\_\_ Date \_\_\_\_\_  
Alabama Historical Commission  
State or Federal agency/bureau or Tribal Government

In my opinion, the property  meets  does not meet the National Register criteria.  
\_\_\_\_\_  
Signature of commenting official \_\_\_\_\_ Date \_\_\_\_\_  
\_\_\_\_\_  
Title \_\_\_\_\_ State or Federal agency/bureau or Tribal Government

## 4. National Park Service Certification

I hereby certify that this property is:  
 entered in the National Register  
 determined eligible for the National Register  
 determined not eligible for the National Register  
 removed from the National Register  
other (explain): \_\_\_\_\_

[Signature] 11/21/19  
Signature of the Keeper \_\_\_\_\_ Date of Action \_\_\_\_\_

Palmerdale Homesteads Historic District  
Name of Property

Jefferson County, Alabama  
County and State

**5. Classification / Ownership of Property:** (check as many boxes as apply)

- Private
- Public-Local
- Public-State
- Public-Federal

**Category of Property:** (check only one box)

- Building(s)
- District
- Site
- Structure
- Object

**Number of Resources Within Property:** (do not include previously listed resources in the count)

Contributing	Non-Contributing	
135	64	Buildings
13	2	Sites
97	55	Structures
2	0	Objects
247	121	<b>TOTAL</b>

Number of contributing resources previously listed in the National Register 0

**6. Function or Use / Historic Functions:** (enter categories from instructions)

Domestic: single dwelling, secondary structure  
Religion: religious facility  
Education: school  
Agriculture/Subsistence: agricultural outbuildings, agricultural field  
Government: post office  
Landscape: street furniture/object  
Transportation: road related

**Current Functions:** (enter categories from instructions)

Domestic: single dwelling, secondary structure  
Religion: religious facility  
Social: meeting hall  
Agriculture/Subsistence: agricultural outbuildings, agricultural field  
Government: post office  
Landscape: street furniture/object  
Transportation: road related

**7. Architectural Classification:** (enter categories from instructions)

Late 19<sup>th</sup> and 20<sup>th</sup> Century Revivals: Colonial, Classical  
Modern Movement  
Other: American Small House

**Materials:** (enter categories from instructions)

**Principal exterior materials of the property:** Foundation: concrete, brick, stone; Roof: asphalt, metal  
Walls: brick, weatherboard, vinyl, asbestos, aluminum. Other: stone, wood

Palmerdale Homesteads Historic District  
Name of Property

Jefferson County, Alabama  
County and State

## Narrative Description

(Describe the historic and current physical appearance and condition of the property. Describe contributing and noncontributing resources if applicable. Begin with a **summary paragraph** that briefly describes the general characteristics of the property, such as its location, type, style, method of construction, setting, size, and significant features. Indicate whether the property has historic integrity.)

---

## Summary Paragraph

Palmerdale Homesteads Historic District is located in Palmerdale, Jefferson County, Alabama on either side of Highway 75, which runs north to south and connects the suburbs of Pinson and Palmerdale to Birmingham, located about twenty miles southwest. The district is comprised of 159 homesteads of various lot sizes. Originally designed to be 2 to 8 acres, the properties are arranged along curvilinear streets that closely follow the topography of the area and branch out from the project area's historic center where the Palmerdale Homesteads School is located on Miles Springs Road. Some of the original homesteads have been subdivided over the years while most retain their acreage and evidence as working farms. Houses from the project era were built between 1934 and 1946 and are of the American Small House type with Colonial Revival and in a few cases Classical Revival details. Infill from the 1950s and 1960s is evident throughout the district, mostly in the form of Ranch houses and some Split-level forms. Outbuildings original to the project era include pumphouses, garages, and storage sheds in addition to landscape features extant such as fences, fence lines, pastures and terraced fields. Stone culverts along Miles Springs and North Valley Roads that were built by the Civilian Conservation Corps are still extant. The district also includes the former Palmerdale Homesteads School (1941) in the heart of the district with the Co-op Store (1936), Palmerdale Baptist Church (1946), and Post Office (c. 1960) fronting Highway 75.

---

## Narrative Description

Palmerdale Homesteads Historic District was established in 1934 as a New Deal Resettlement Administration subsistence homestead project and is made up of 159 properties in addition to landscape features built by the Civilian Conservation Corps, two contributing culverts (#66 and #106), a contributing stone bridge (#110), and a contributing spring house (#10). The district includes residential resources, including farmsteads with an assortment of outbuildings – the most prolific in this case being either an original pump house or barn/garage that dates to project years – and community buildings, such as the school, church, and co-op. Each property has potential to have one or more contributing resources, some having as many as five and being representative of a more intact homestead, while others may only have one contributing resource, such as the house, an outbuilding, a maintained pasture, or another landscape feature. The period of significance carries past the project's end in the 1940s to capture continued growth and development in the area post-World War II and as such extends to 1970.

Palmerdale Homesteads developed mostly in three phases. The first phase of growth occurred immediately after passage of the National Industrial Recovery Act, which established the homesteads projects and lasted from 1934-1939. This first phase includes properties located on the east side of Highway 75. The second phase started with the construction of the school in 1940 and additional homesteads that were built on the west side of Highway 75 between c. 1940-1946. The third and final growth phase occurred following the project's official end and carried into the 1960s, when a new post office was built and additional lots within the homestead's boundary on both sides of the highway were settled.

The location of the Palmerdale Homesteads, along Highway 75, sits the foothills of the Appalachian Mountains, to the north east of Birmingham, Alabama in Jefferson County. Driving north on Highway 75, the Palmerdale Baptist Church (Photo #33) and Palmerdale Homesteads Community Store (Photo#31) are located to the right

Palmerdale Homesteads Historic District  
Name of Property

Jefferson County, Alabama  
County and State

on either side of Miles Springs Road, which serves as the entrance into and main artery through this part of the community. This eastern side of Highway 75 was developed first and consists of several intact homesteads, some later infill, the school, CCC-constructed landscape features, and a non-contributing fire station that was constructed c. 2005. Upon entering the district, there are a couple of non-contributing resources to the left along Miles Springs Road (Photo #6), but there are more good examples of intact homesteads, such as what is seen in Photo #7. Miles Springs Road intersects North and South Valley Roads where the Palmerdale School is located (Photos #8 and #14). CCC-constructed culverts (Photo #30) run alongside North Valley Road on the right side headed north, which features a nice concentration of intact homesteads on either side (Photo #27), and a CCC-constructed bridge crosses Self Creek on South Valley Road (Photo #16 and 41). Miles Springs Road continues east to intersect with Brookwood Road, which leads to Southfield Road and Helms Circle to the south. Self Creek runs alongside parts of Miles Springs Road to the south (Photo #15). After passing through the intersection with Brookwood Road, Miles Springs Road becomes more curvilinear and ascends uphill (Photo #42). The landscape in this section of the community is almost pristine in places, maintaining the rural feel and setting of the original homesteads with forested hills in the background (Photos #1 and #11).

On the west side of Highway 75, there are two entrances into and out of the district. Directly across from Miles Springs Road is Marsh Mountain Road. A short section of this road falls within the boundary of the district, but there are only a few contributing resources located on it. It connects the rest of the district however to West Hill Road, which features more rolling, wooded hills and smaller lot sizes that lend a more suburban feel to this half of the district (Photo #35). West Hill Road runs almost parallel with Highway 75 and contains much of the housing stock that was constructed during the second phase of building at Palmerdale Homesteads. It has several intact homesteads and other good examples of contributing infill on it (Photos #39 and #34). West Hill Road connects again to Highway 75 via Midwood Road just south of the northernmost boundary for the district (Photo #40).

Resources along Highway 75 are fewer and more spread out in places. The Post Office built c. 1960 (Photo #32), some contributing homesteads, and later infill dot the landscape. Though Highway 75 does not contain as high a concentration of resources as several other streets within the district, it served as the main artery for transportation of homesteaders to jobs in Birmingham and nearby mining towns. Without Highway 75, Palmerdale Homesteads likely would not have been built at this location.

Palmerdale Homesteads Historic District was established in 1934 as a New Deal Resettlement Administration subsistence homestead project and is made up of 368 resources. 247 (67%) of these are contributing and include 135 buildings (#2 a. b. d., #3 a. c., #5 a., #7 a. b., #9 a., #10 a., #12 a., #13 a., #14 a., #15 a., #16 a., #18 a., #19 a., #20 a., #22 a., #24 a., #25 a., #26 a., #27a., #33 a. b., #34 a., #36a, #39a. b. , # 41 a., #43a., #44a, #46 a., #47 a., #48 a., #49 a., #50 a., #51 a. b. e., #52 a., #53 a., #55 a. c., #56 a., #58a., #59 a. c., #60 a., #64 a., #67 a. b., #68 a. c., #69 b., #70 a., #71 a. c. , #72 a. b., #73 a. b. , #77 a. d., #78 a. b., #79 a. c., #81 a., #83 a. b. , #84 a. b., #85 a. b., #86 b., #87 a. , #89 a. b., #90 a. b., #91 a. b., #95 b., #96 a. b., #97 a. d., #98 c., #100 a. b., #101 a. b. , #102 a., #104 a., #105 a., #107 a., #109 a., #110 a., #112 a., #113 a. , #114 a. , #115 a., #116 a. , #117 a., #120 a. b., #121 a. , #123 a. b., #124 a., #125 a. b. , #126 a., #127 a. b., #129 a. , #130 a. b. , #133 a., #135 a., #136 a., #139 a. , #140 a. , #143 a., #144 a., #147 a., #148 a., #149 a., #150 a., #151 a. b. , #152 a. , #153 a., #154 a., #155 a. , #156 a, #158 a., #159 a., #160 a., #161 a., #163 a., #164 a.), sites (#2 e., #4 b, #34 b, #36 d, #39 e, #43 d., #44 d, #56 e., #59 d., #100 d., #104 e., #123 e., #127 e., #130 e.), 97 structures (#2 c., #3 b., #11 b., #14 b., #16 b., #17 a., #19 b., #24 b., #25 b., #26 b., #33 d., #34 d., #36 b. c., #40 b. c., #41 b., #43b. c., #44bc, #45 b. c. , #47 b., #48 b., #49 b. c. d., #50 bc, #51 c., #55 b., #56 b. c., #58 b., #59b., #60 b. c., #64 b. c.d. e., #66, #67 c. d., #68 b. d. e., #69 c., #71 b. d. , #72 c., #73 c., #75 b., #77 c., #78 d., #79 b., #80 b. c., #83 c., #84 c., #85 c., #89 c., #93 b., #97 b. C. e. , #100 c. e. , #101 c. , #102 b., # 106, #107 b. c. , #109 c., #116 b., #118 b., #120 c. , #123 c., #125 c. d. , #127 c., #129 b. c. , #130 c., #131, #139 b., #139 b. c. d., #144 b., #151 d., #154 b., #156 c. , #158 b., #160 b., #163 b.), and 2 objects (#41.b., #98.b).

Palmerdale Homesteads Historic District

Jefferson County, Alabama

Name of Property

County and State

120 (33%) are non-contributing and include 64 buildings (#1a., #4 a., #6 a., #7 c., #8 a., #11 a., #17 b., #21, #23 a., #28 a., #29 a., #30 a., #31 a., #32 a., #34 c., #35 a. #37 a., #38a., #40a., #42 a., #45a., #54 a., #56 d., #57 a., #61, #62 a., #65, #69 a., #71 e. f., #74 a., #75a., #76 a., #78 c., #79 d., #80 a., # 82 a., #85 d., #86 a., #88 a., #89 c., #92 a., #93 a., #94 a., #95 a., #99 a., #103 a., # 108 a., #111 a., #118 a., #119 a., #121 c., #122 a., #128 a., #132 a., #134 a. , #137 a. , # 138 a., #141 a., #142 a., #143 b., #145 a., #146 a, #156 b., #157 a., #162 a., #165 a.), 1 site (#4.b.), and 55 structures (#23 b. c., #25 c., #27 b., #27 b., #33 c., #39 c. d., #40d., #45 d. e., #46 b., #51 d., #62 b., #69 d., #76 b., #77 d., #83 d., #86 c., #87 b. c., #95 c., #97 f., #98 a., #101 d., #102 c., #104 b. c. d., #105 b. c. d. e. , #109 b., #113 b. c., #114 b. c., #116 c. d. , #120 d., #121 b., #123 d., #127 d., #128 b., #130 d., #137 b., #143 c., # 151 c., #159 c., #160 c.).

Palmerdale Homesteads Historic District retains integrity as New Deal era Resettlement Administration subsistence homestead project. Despite continued growth and some new development within the district, Palmerdale Homesteads retains all seven aspects of integrity, location, design, setting, materials, workmanship, feeling, and association. The district maintains its overall historic appearance and function with few intrusions on the landscape. The contributing buildings retain most if not all of their historic materials and design, while the setting has been maintained over time. The individual homesteads are still discernable on the landscape, contributing to the feeling and association of the district.

## Resource Inventory:

### Brookwood Road

1. 7970 Brookwood Road. c. 1940; c. 1970s. (1 non-contributing resource)
  - a. House. c. 1940; 1970s. One story weatherboard and brick American Small House with a side gable roof, c. 1970s 6:6 double hung aluminum windows, left side exterior brick chimney, brick foundation, and a large c. 2000 right side wing with aluminum siding. **NC**
2. 7984 Brookwood Road. c. 1940; c. 1970s; c. 2000. (5 contributing resources)
  - a. House. c. 1940; c. 1970s. One story brick American Small House with side gable roof with c. 2000 standing seam metal, central brick chimney, 6:6 double hung wood windows, front porch with square wood columns with simple wood capitals that was enclosed with glass c. 1970s. There is a concrete foundation. **C**
  - b. Garage. c. 1940. One story board-and-batten garage with a front gable, six-light fixed wood window, and concrete foundation. **C**
  - c. Equipment Shed. c. 1940. One story open board-and-batten garage with side gable roof and full spraddle roof porch. **C**
  - d. Cottage. C. 1940; c. 2000. One story weatherboard cottage with 6:1 double hung wood windows, front gable, and c. 2000 standing seam metal roof. **C**
  - e. Pasture. c. 1940. Both sides of the house, enclosed by three-board wood fence. **C**
3. 8029 Brookwood Road. c. 1940; c. late 1950s; c. 1960s. (3 contributing resources)
  - a. House. c. 1940; c. 1950s; c. 1960s. One story American Small House with a side gable, c. 1960s vinyl siding, off center entrance with left side extended bay, 2:2 double hung wood windows, front porch that was enclosed c. late 1950s with steel casement windows, and a cut stone foundation. **C**
  - b. Carport. c. 1965. One story open carport on the right side of the house with wrought iron posts. **C**

Palmerdale Homesteads Historic District

Jefferson County, Alabama

Name of Property

County and State

- c. Barn. c. 1940. One story weatherboard barn with a gambrel roof and a concrete foundation. **C**
4. 8041 Brookwood Road. c. 1980. (2 non-contributing resources)
  - a. House. c. 1980. Split-level with brick veneer and weatherboard, 9:9 wood windows, wood door with sidelights. **NC**
  - b. Pasture. c. 1980. In rear of house with three-board wood fence. **NC**
5. 8060 Brookwood Road. c. 1950. (2 contributing resources)
  - a. House. c. 1950. One-story brick and vinyl American Small House with side gable roof, three bays, entrance in left bay with multi-light picture window, center bay is brick, left and right bays are vinyl clad, 6:6 vinyl windows, exterior brick chimney on left side, and brick foundation. **C**
  - b. Pasture. c. 1950. In rear of house, enclosed by post and net wire fence. **C**
6. 8065 Brookwood Road. c. 1980. (1 non-contributing resource)
  - a. House. c. 1980. Two-story raised ranch with Colonial Revival elements, brick with vinyl in the gable, brick spiral staircase leads to entry with wrought iron handrails. **NC**
7. 8074 Brookwood Road. c. 1940; c. 1965. (2 contributing resources; 1 non-contributing resource)
  - a. House. c. 1940; c. 1965. One story American Small House with c. 1965 vinyl siding, side gable roof, off center brick chimney, fixed 1:1:1 and 6:6 wood windows, and a brick foundation. There is also a left side wing with vinyl siding. **C**
  - b. Barn. c. 1940. Rear weatherboard barn with exposed wood rafters and a side gable. **C**
  - c. Manufactured Home. c. 1970. One story with low-pitch side gable roof and 1:1:1 aluminum windows. **NC**
8. 8086 Brookwood Road. c. 1980. (1 non-contributing resource)
  - a. House. c. 1980. Two-story split level with 9:9 vinyl windows, setback farther from the road than the surrounding houses. **NC**
9. 8102 Brookwood Road. c. 1960. (1 contributing resource)
  - a. House. c. 1960. Two-story raised ranch with side gable roof, concrete block foundation, vinyl siding, sliding aluminum windows. **C**
10. 8114 Brookwood Road. c. 1934. (1 contributing resource)
  - a. Springhouse. c. 1934. Remnants of a fieldstone springhouse on Miles Springs. The roof is no longer extant. **C**

### **Helms Circle**

11. 7417 Helms Circle. **C**. 1940; c. 1960s, c. 2000. (1 contributing resource; 1 non-contributing resource)
  - a. House. c. 1940; c. 1960s. One story house with c. 1960 aluminum siding, cross gable roof, side gable roof, 6:6 double hung wood windows, central brick chimney, front porch enclosed c. 2000, and a cut stone foundation. **NC**
  - b. Pump House. c. 1940. One story weatherboard pump house with a front gable. **C**

### **Highway 75 (previously known as Birmingham-Oneonta Highway)**

12. 8039 Highway 75. c. 1946, c. 1960s. (1 contributing resource)

Palmerdale Homesteads Historic District  
Name of Property

Jefferson County, Alabama  
County and State

- a. Palmerdale Baptist Church (now Encounter Church). c. 1946; c. 1960s. One story painted brick Colonial Revival church with front gabled roof, heavy boxed cornices with prominent returns. Keystone arch above plain double entry doors beneath centered front gabled entry with heavy boxed cornices and returns. A single fixed five-pane swirled stained glass window on each side of the entrance gable and seven fixed five-pane swirled stained glass windows on each of the side elevations of the building. All windows are topped with a stone splayed lintel with keystone at its center and appear to be replacements c. 1960. There are brick pilasters between each of the seven windows on the side elevations. A solid brick centered porch with a ramp, descending left of the building, was added and a separate one-story, side gable brick and mortar classroom building was added in rear of the church c. 1960. The classroom building has 2:2 aluminum windows and is connected to the church building by an open breezeway. Both buildings have a metal roof and were painted c. 2015. **C**

13. 8073 Highway 75 (see **Note** below). c. 1936. (1 contributing resource)

- a. Palmerdale Homestead Community Store (now the Walker Center of Encounter Church). c. 1936. This one-story Colonial Revival brick structure was built as the Community Store for Palmerdale Homesteads. The building has a cross gabled metal roof with a centered square cupola. The main entrance is located on the northeast elevation under a shed roof porch supported by square wood columns. There are transoms above each paneled entry door and paired 6:6 double hung wood windows with brick sill courses throughout. There are two wide exterior brick chimneys on the southeast elevation, facing Highway 75, one centered on the facade and the other centered in the projecting front gable. A third smaller brick chimney is located on the rear, northwest elevation. The southwest elevation features a symmetrical façade with 6:6 double hung wood windows and two paneled doors with transoms above. This building was purchased by the Palmerdale Baptist Church in 1973. **C**

**Note:** Even though this building's address is currently the same as the Palmerdale Baptist Church and is now (since 1973) affiliated with the church organization, it was built at a different time, for a purpose not associated with the church, and is separated from the church by Miles Springs Road. For those reasons it is being given a separate Inventory Number.

14. 8074 Highway 75. c. 1940; c. 1960s. (2 contributing resources)

- a. House (now Unique Touch Gift Shop). c. 1940, c. 1960s. One story house with a side gable roof, right side extended bay, c. 1960s vinyl siding, off center brick chimney, 6:6 double hung wood windows, and front porch with square columns that were refaced with vinyl c. 1960s. There is also a cut stone foundation. **C**
- b. Shed. c. 1940. Small wood shed. **C**

15. 8079 Highway 75. c. 1960. (1 contributing resource)

- a. Post Office. c. 1960. One story free standing building with oversized orange brick, hip roof, front storefront window with c. 1960s aluminum and glass, 6:6 double hung wood windows on the side walls, and a concrete foundation. There is also a rear one story brick pump house with a flat roof. **C**

16. 8118 Highway 75. c. 1940; c. 1970s. (2 contributing resources)

- a. House. c. 1940; c. 1970s. One story spraddle roof house with c. 1970s aluminum siding and a dormer, off center brick chimney, 6:1 double hung wood windows, and a cut stone foundation. **C**
- b. Pump house. c. 1940. Weatherboard pump house with a front gable. **C**

Palmerdale Homesteads Historic District

Jefferson County, Alabama

Name of Property

County and State

17. 8140 Highway 75. c. 1940; c. 1985. (1 contributing resource; 1 non-contributing resource)
- Pump House. c. 1940. One story weatherboard pump house with a hip roof. The original house built on this site is no longer extant. **C**
  - Barn. c. 1985. Weatherboard barn. **NC**
18. 8297 Highway 75. c. 1940s. (1 contributing resource)
- House. c. 1940s. One story weatherboard spraddle roof house with a full front porch that was enclosed c. 1950s with metal casement windows, right weatherboard wing, and a brick foundation. **C**
19. 8318 Highway 75. c. 1940. (2 contributing resources)
- House. c. 1940. One story house with metal roof, central projecting porch bay with gable, supported by paired square wood columns, wood vent in gable, 6:6 double hung wood windows, one 8:8 double hung wood window flanked by 4:4 on either side on porch bay, off-center brick chimney. **C**
  - Garage/Utility building. c. 1940. Weatherboard side gable building with metal roof and 6:6 double hung wood windows. **C**
20. 8337 Highway 75. c. 1940s; c. 1970s. (1 contributing resource)
- House. c. 1940s; c. 1970s. One story house with a side gable roof, left side extended bay, off center brick chimney, and c. 1970s wood siding and 1:1 double hung aluminum windows. **C**
21. 8339 Highway 75. c. 1980. (1 non-contributing resource)
- House. c. 1980. One story cross-gable brick ranch. **NC**
22. 8348 Highway 75. c. 1940; c. 1970s. (1 contributing resource)
- House. c. 1940s; c. 1970s. One story "L" shaped house with a cross gable roof, 6:6 double hung wood windows, brick foundation, and c. 1970s vinyl siding. **C**
23. 8357 Highway 75. c. 1980. (3 non-contributing resources)
- House. c. 1980. One story cross-gable brick ranch with dormers. **NC**
  - Garage. c. 1980. Side gable board-and-batten garage with metal roof. **NC**
  - Storage shed. c. 1980. Gambrel roof shed. **NC**
24. 8367 Highway 75. c. 1940. (2 contributing resources)
- House. c. 1940. One story American Small House with side gable metal roof, right side recessed bay, off-center porch with front gable supported by paired square wood columns, 6:6 double hung wood windows, central brick chimney and interior brick chimney in recessed bay, brick foundation. **C**
  - Pumphouse. c. 1940. Weatherboard with two wood doors, side gable roof with shed roof addition to the rear. **C**

### Marsh Mountain Road

25. 8030 Marsh Mountain Road. c. 1940; c. 1980s; c. 2005. (2 contributing resources; 1 non-contributing resource)
- House. c. 1940; c. 1980s; c. 2005. One story American Small House with a c. 2005 side gable standing seam metal roof. There is a left side recessed screened porch bay with original 6:6 double hung wood windows and wood and glass door; tall, narrow central brick chimney and off-



Palmerdale Homesteads Historic District

Jefferson County, Alabama

Name of Property

County and State

center brick chimney; c. 1980s vinyl siding and 6:6 double hung aluminum windows, and a cut stone foundation with decorative metal vents. **C**

- b. Pump House. c. 1940. Weatherboard pump house with hip roof. **C**
- c. Garage. c. 1975. One story with front gable and aluminum siding. **NC**

26. 8046 Marsh Mountain Road. c. 1940; c. 1960s. (2 contributing resources)

- a. House. c. 1940; 1960s. One story house with a side gable, left side recessed screened porch with an exterior cut stone chimney, off center brick chimney, 6:6 double hung wood windows, c. 1960s vinyl siding, and a cut stone foundation. This design mirrors 8030 Marsh Mountain Road except that the 6:6 windows are to the left of the front door. **C**
- b. Pump House. c. 1940. Weatherboard pump house with a hip roof. **C**

27. 8009 Marsh Mountain Road. c. 1934; c. 1990. (1 contributing resource; 2 non-contributing resources)

- a. House. c. 1934; c. 1990. One story American Small House with c. 1980 vinyl siding and side gable metal standing seam roof, 6:6 double hung windows, right side projecting porch bay with shed roof, and cut stone foundation. **C**
- b. Shed. c. 1990. One story shed with vinyl siding. **NC**
- c. Shed. c. 1990. One story shed with vinyl siding. **NC**

28. 8013 Marsh Mountain Road. c. 1980. (1 non-contributing resource)

- a. House. c. 1980. One of five nearly identical one-story cross-gable roof houses on a raised concrete block basement. Vertical wood board siding and 1:1 vinyl windows. **NC**

29. 8017 Marsh Mountain Road. c. 1980. (1 non-contributing resource)

- a. House. c. 1980. One of five nearly identical one-story cross-gable roof houses on a raised basement. Vertical wood board and brick veneer with concrete block foundation and 9:9 vinyl windows. **NC**

30. 8021 Marsh Mountain Road. c. 1980. (1 non-contributing resource)

- a. House. c. 1980. One of five nearly identical one-story cross-gable roof houses on a raised basement. Composite wood siding and brick veneer with concrete block foundation and 9:9 vinyl windows. **NC**

31. 8025 Marsh Mountain Road. c. 1980. (1 non-contributing resource)

- a. House. c. 1980. One of five nearly identical one-story cross-gable roof houses on a raised concrete block basement. Vertical wood board siding and 1:1 vinyl windows. **NC**

32. 8029 Marsh Mountain Road. c. 1980. (1 non-contributing resource)

- a. House. c. 1980. One of five nearly identical one-story cross-gable roof houses on a raised basement. Vertical wood board and brick veneer with concrete block foundation and 9:9 vinyl windows. **NC**

### **Midwood Road**

33. 5264 Midwood Road. c. 1960. (3 contributing resources; 1 non-contributing)

- a. House. c. 1960. One story rustic style linear ranch with a side gable roof, full porch across southern elevation with shed roof and roughewn wood posts, multi-light fixed and casement wood windows. **C**
- b. Barn. c. 1960. Wood barn with a side gable metal roof and exposed rafters. **C**

Palmerdale Homesteads Historic District

Jefferson County, Alabama

Name of Property

County and State

- c. Metal carport. c. 1990s. **NC**
- d. Garage. c. 1960s. Aluminum walls. **C**

34. 5234 Midwood Road. c. 1940; c. 1960s. (3 contributing resources; 1 non-contributing resource)
- a. House. c. 1940; c. 1960s. One story house with a side gable roof, left side extended bay with an exterior brick chimney, c. 1960s vinyl siding and 6:6 double hung aluminum windows, and a concrete foundation. There is also a rear one story weatherboard barn. **C**
  - b. Rolling pasture enclosed by post and net wire fence. **C**
  - c. Barn. c. 1970s. Gambrel roof barn with vertical wood siding. **NC**
  - d. Garage. c. 1940. Side gable board-and-batten garage with fixed 6 pane window. **C**

### **Miles Springs Road**

35. 5250 Miles Springs Road. c. 2000. (1 non-contributing resource)
- a. House. c. 2000. One story house with vinyl siding, 6:6 double hung aluminum windows, side gable, off center front porch with a front gable, and a concrete slab foundation. **NC**
36. 5251 Miles Springs Road. c. 1934. (4 contributing resources)
- a. House. c. 1934. One story weatherboard American Small House with a side gable, recessed one story wing with a side gable, and exterior brick chimney. There are 1:1 double hung wood windows with metal awnings, original wood and glass front entrance door, and a stone foundation. Front screened porch with original wood and screen door, and decorative wrought iron railing. **C**
  - b. Pump house. c. 1934. One story weatherboard pump house with a hip roof. **C**
  - c. Garage. c. 1955. Large weatherboard garage/storage building with a front gable. **C**
  - d. Pasture. c. 1934. Enclosed by post and net wire fence to the left. **C**
37. 5260 Miles Springs Road. c. 1995. (1 non-contributing resource)
- a. House. c. 1995. One story brick house with a hip roof, left front projecting 2-car garage bay with vinyl and front gable, right front project bay, 9:6 double hung aluminum windows, and a concrete slab foundation. **NC**
38. 5270 Miles Springs Road. c. 2000. (1 non-contributing resource)
- a. House. c. 2000. New Traditional brick infill with hipped roof, prominent projecting front gables and two front gabled dormer. **NC**
39. 5273 Miles Springs Road. c. 1934; c. 1970. (3 contributing resources; 2 non-contributing resources)
- a. House. c. 1943; c. 1970. One story American Small House with a side gable roof, c. 1970 vinyl siding, 6:6 double hung wood windows, central interior brick chimney, off-center brick chimney, and a cut stone foundation. The spraddle roof front porch was enclosed c. 1970 with aluminum siding, 2:2 aluminum windows and aluminum and glass door. **C**
  - b. Barn. c. 1934. One story wood barn. **C**
  - c. Pump house. c. 1934. C. 1970. One story pump house with a gambrel roof that was refaced with brick c. 1970. **NC**
  - d. Carport. c. 1970. One story aluminum carport attached on the left side of the house. **NC**
  - e. Pasture. c. 1934. Large pasture to the left side (fronting Miles Springs and S. Valley Roads) enclosed by post and net wire fencing, some original roughhewn wood posts extant along S. Valley Road. **C**

Palmerdale Homesteads Historic District  
Name of Property

Jefferson County, Alabama  
County and State

40. 5292 Miles Springs Road. c. 1934; c. 1970. (2 contributing resources; 2 non-contributing resources)
- House. c. 1934; c. 1970. One story house with a side gable and wood vents, stone foundation, and central brick chimney. Substantial c. 1970 alterations include vinyl siding, 2:2 double hung aluminum windows, and enclosing the central front gabled porch. **NC**
  - Pump house. c. 1934. One story weatherboard pump house with a side gable, exposed wood rafters, and a concrete foundation. **C**
  - Garage. c. 1934. One story wood garage with a side gable, side entrance, and concrete foundation. **C**
  - Shed. c. 1990. One story aluminum shed with a front gable and concrete foundation. **NC**
41. 5300 Miles Springs Road. 1941; 1944. (2 contributing resources)
- Palmerdale School (now Palmerdale Homesteads Community Center). 1941. One story Colonial Revival brick building with crawl space on a concrete and brick foundation. Symmetrical façade with hipped metal roof and a prominent front gabled pedimented center porch containing three full-height keystone archways with square brick columns and brick quoins on either corner. A round louvered wood vent is in the front gable. Wrought iron handrails frame brick stairs leading to a pair of multi-light wood entry doors with a multi-light transom above and flanked by 6:6:6 wood windows on either side. Four evenly spaced sets of six, 6:6:6 wood windows span the façade divided by four single 4:4 double hung wood windows. There are two side entrances on each end of the building; both have double solid metal doors topped with elliptical fan lights with keystone arches above and are set beneath a projecting pediment that appears to be supported by brick pilasters. There are two pairs of 6:6 double hung wood windows on the sides of the building and additional sets of six 6:6:6 windows along the back of the building. There is a hipped roof section perpendicular to the main building that is connected by a gabled hyphen. Both the hyphen and rear building are also brick with large evenly spaced 6:6:6 wood windows and form a "U" shaped courtyard on the southernmost side, facing Miles Springs Road. The rear section has a metal garage door on that end as well as an off center brick chimney. **C**
  - Sidewalk. 1944. Poured concrete sidewalk leads to the front entrance, features hand carved "Class of 1944" at the end nearest Miles Springs Road. **C**
42. 5340 Miles Springs Road. c. 2005. (1 non-contributing resource)
- Palmerdale Fire Station. c. 2005. One story fire station with metal siding, slightly pitched front gabled roof, concrete foundation, and 3 front bays. **NC**
43. 5357 Miles Springs Road. c. 1940; c. 1965; c. 1995. (4 contributing resources)
- House. c. 1940; c. 1965; c. 1995. One story American Small House with a side gable, c. 1965 wood siding, 1:1 double hung wood windows, recessed left side bay with fixed 1:1:1 wood windows and exterior brick chimney, off center entrance, cut stone foundation, and a c. 1995 standing seam metal roof. **C**
  - Pump house. c. 1940. One story weatherboard pump house with a hip roof. **C**
  - Carport. c. 1965. Open left side wood carport. **C**
  - Pasture. c. 1940. In rear of house, enclosed by post and wire fencing. **C**
44. 5347 Miles Springs Road. c. 1940; c. 1965. (4 contributing resources)
- Watts House. c. 1940; c. 1965. One story American Small House with c. 1965 vinyl siding, 6:6 double hung wood windows, central front porch with a front gable and wrought iron posts, off center entrance, and a concrete foundation. **C**
  - Pump house. c. 1940. One story weatherboard pump house with a hip roof. **C**

Palmerdale Homesteads Historic District

Jefferson County, Alabama

Name of Property

County and State

- c. Shed. c. 1940. One story metal shed with a front gable. **C**
- d. Pasture. c. 1940. To the right side and rear, stretches to S. Valley Road with metal post and net wire fencing. Miles Springs runs through the pasture. **C**

45. 5360 Miles Springs Road. c. 1940s; c. 1980; C. 2000. (2 contributing resources; 3 non-contributing resources)

- a. House. c. 1940s; c. 1980; c. 2000. One story vinyl American Small House with side gables, c. 1980 aluminum siding and 1:1 double hung aluminum windows, central interior stucco chimney, front porch with a front gable, 6:6 vinyl windows and fluted round aluminum columns, cut stone foundation. There is also a c. 2000 standing seam metal roof and aluminum carport attached to the left side. **NC**
- b. Garage. c. 1940. One story weatherboard garage with side gable roof. **C**
- c. Shed. c. 1940. C. 2000. One story wood shed with a c. 2000 side gable standing seam metal roof. **C**
- d. Shed. c. 1970. One story aluminum shed with a side gable and rear spraddle. **NC**
- e. Shed. c. 1970. One story, 3-bay, open wood shed with a front gable. **NC**

46. 5388 Miles Springs Road. c. 1958; c. 1970. (1 contributing resource; 1 non-contributing resource)

- a. House. c. 1958. One story brick L- shaped Ranch style house with hip roof, bands of decorative brick along roof line and above the garage/basement, 2:2 double hung wood windows, front stoop with decorative wrought iron railing, left side projecting 1-bay garage, and a concrete foundation. **C**
- b. Storage Shed. c. 1970. One story wood shed with a metal gambrel roof. **NC**

47. 5400 Miles Springs Road. c. 1940; c. 1955; c. 1980. (2 contributing resources)

- a. Fields House. c. 1940; c. 1955; c. 1980. One story American Small House with a c. 1980's aluminum siding, 6:6 double hung wood windows, side gable, right side exterior brick chimney, central brick chimney, and a cut stone foundation. The front porch was enclosed c. 1955 with single pane aluminum windows. **C**
- b. Garage. c. 1940. One story weatherboard garage with a front gable, off center brick chimney and a cut stone foundation. **C**

48. 5441 Miles Springs Road. c. 1965. (2 contributing resources)

- a. House. c. 1965. Tri-level brick house with 1:1 double hung wood windows and a concrete foundation. The right side 2-story projecting bay has a front gable with aluminum siding, and the 1-story portion has 2 front gables with aluminum siding. **C**
- b. Garage. c. 1965. One story garage with aluminum siding. **C**

49. 5455 Miles Springs Road. 1934; c. 1965; c. 2005. (4 contributing resources)

- a. House. 1934; c. 1965; c. 2005. One story American Small House with a side gabled roof with wood vents, c. 1965 aluminum siding and 1:1 double hung aluminum windows throughout, and a cut stone foundation. The front projecting porch bay has a front gable, wood railing, and groups of 3 square wood columns at the corners. There is a c. 2005 standing seam metal roof. **C**
- b. Pump house. 1934; c. 1965; c. 2005. Pump house refaced with c. 1965 aluminum siding, and a c. 2005 tin hip roof. **C**
- c. Garage. c. 1965. One story garage with aluminum siding. **C**
- d. Shed. c. 1965. One story aluminum shed. **C**

Palmerdale Homesteads Historic District

Jefferson County, Alabama

Name of Property

County and State

50. 5456 Miles Springs Road. c. 1940; c. 1970. (3 contributing resources)

- a. House/Former post office. c. 1940; c. 1970. One story irregular U-shaped structure, small off-center interior brick chimney, off center entrance original wood and glass door, 6:6 double hung wood windows, and c. 1970 vinyl siding. The right bay projects more than the left bay and contains a brick chimney and looks like it could have been added slightly later than the left bay, perhaps when the building was converted to a residence. **C**
- b. Pump house. c. 1940. One story weatherboard pump house with a hip roof. **C**
- c. Garage. c. 1940. One story weatherboard garage with side tin gable, exposed wood rafters, and 6:6 double hung wood windows. **C**

51. 5461 Miles Springs Road. c. 1940; c. 1980s. (4 contributing resources; 1 non-contributing resource)

- a. Connor House. c. 1940; c. 1980s. One story weatherboard American Small House with a side gable, recessed left bay with exterior brick chimney, 6:6 double hung wood windows, metal awnings, stone foundation, and c. 1980's metal standing seam roof. **C**
- b. Cottage. c. 1940. One story asbestos cottage with front gable, 2:2 midcentury double hung wood windows, and right side entrance. **C**
- c. Pump house. c. 1940. One story wood pump house with hip roof. **C**
- d. Shed. c. 1970s. One story metal shed. **NC**
- e. Barn. c. 1940. Weatherboard barn with front gable. **C**

52. 5466 Miles Springs Road. c. 1940s; c. 1990. (1 contributing resource)

- a. House. c. 1940s; c. 1990. One story "L" shaped weatherboard American Small House with 1:1 double hung wood windows, side gable with c. 1990 metal standing seam roof, open right side porch with front gable, and a brick foundation. **C**

53. 5476 Miles Springs Road. c. 1995. (1 non-contributing resource)

- a. Cross House. c. 1995. One story manufactured home with vinyl siding, side gable roof with central front gable, 6:6 and 8:8 double hung wood windows, atop concrete slab. **NC**

54. 5473 Miles Springs Road. c. 1970. (1 non-contributing resource)

- a. House. One story manufactured home. **NC**

55. 5489 Miles Springs Road. c. 1940; c. 1975. (3 contributing resources)

- a. House. c. 1940; c. 1975. One story weatherboard American Small House with a side gabled roof, left side exterior brick chimney and central brick interior chimney, and a concrete foundation. There is a central front stoop with iron posts, stone foundation, and a c. 1975 right recessed brick bay. **C**
- b. Shed. C. 1966. One story wood and metal shed with a flat roof. **C**
- c. Barn. c. 1940. Rear wood barn with a sloped tin roof **C**

56. 5506 Miles Springs Road. c. 1940s. (4 contributing resources; 1 non-contributing resource)

- a. House. c. 1940s. One story weatherboard and brick American Small House with side gable, front gable over central front entrance porch bay with wrought iron railing, central brick chimney, 6:6 double hung wood windows, and brick foundation. **C**
- b. Pump House. c. 1940. One story weatherboard pump house with a hip roof. **C**
- c. Garage. c. 1940. One story weatherboard garage with a front gable. **C**
- d. Trailer. c. 1965. One story trailer with aluminum siding. **NC**
- e. Pasture. c. 1940s. In front of house, enclosed by roughhewn wood post and net wire fencing. **C**

Palmerdale Homesteads Historic District

Jefferson County, Alabama

Name of Property

County and State

57. 5507 Miles Springs Road. c. 1970. (1 non-contributing resource)
- House. c. 1970. One story manufactured house with a side gable, 6:6 double hung aluminum windows, and a concrete slab foundation. **NC**
58. 5517 Miles Springs Road. c. 1940; c. 1960s; c. 2005. (2 contributing resources)
- House. c. 1940; c. 1960s; c. 2005. One story American Small House with c. 1960s aluminum siding, c. 2005 side standing seam roof, off center brick chimney, 6:6 and 1:1 double hung aluminum windows, left bay recessed entrance bay with wrought iron railing, and a concrete foundation. **C**
  - Pump House. c. 1940. One story weatherboard pump house with a hip roof. **C**
59. 5523 Miles Springs Road. c. 1936; c. 1960s; c. 2005. (4 contributing resources)
- House. c. 1936; c. 1960s; c. 2005. One story American Small House with brick on the lower 1/3 of right bay, c. 1960s vinyl siding and 2:2 double hung aluminum windows, c. 2005 standing seam metal roof, and a cut stone foundation. **C**
  - Pump House. c. 1936. One story weatherboard pump house with a hip roof. **C**
  - Barn. c. 1936; c. 2005. Large weatherboard barn with side c. 2005 standing seam roof. **C**
  - Pasture. c. 1940. Terraced field next to house. **C**
60. 5524 Miles Springs Road. c. 1936; c. 1960s. (3 contributing resources)
- House. c. 1936; c. 1960s. One story weatherboard American Small House with spraddle roof, central brick chimney, 6:6 double hung wood windows, extended left side bay with side gable, full front porch with a flat roof and wrought iron railing, and a concrete foundation. **C**
  - Pump House. c. 1936. Weatherboard pump house with a hip roof. **C**
  - Garage. c. 1936. One story weatherboard garage with a front gable. **C**
61. 5540 Miles Springs Road. c. 1980. (1 non-contributing resource)
- House. c. 1980. One story brick house with a side gable tin roof, 9:6 double hung aluminum windows, octagonal bay on each end, and concrete foundation. **NC**
62. 5548 Miles Springs Road. c. 1980. (2 non-contributing resources)
- House. c. 1980. One story brick and vinyl manufactured home with side gable, 6:6 double hung aluminum windows, and concrete slab foundation. **NC**
  - Shed. c. 1980. Rear wood and vinyl shed. **NC**
63. 5553 Miles Springs Road. c. 1990. (1 non-contributing resource)
- House. c. 1990. One and one-half story brick house with 3 dormer windows, side gable, 6:6 Palladian- style aluminum windows, front porch with four turned wood posts, and a concrete slab foundation. **NC**
64. 5554 Miles Springs Road. c. 1936; c. 1990. (5 contributing resources)
- House. c. 1936; c. 1990. One story with basement brick and weatherboard American Small House with a cross gable roof, exterior brick chimney, 1:1 double hung aluminum windows, brick foundation with 2:2 double hung wood windows in the basement area, and central projecting front porch with a gable and wood vent enclosed c. 1990 with aluminum siding. **C**
  - Pump House. c. 1936. Weatherboard pump house with a hip roof. **C**
  - Garage. c. 1936. One story weatherboard garage with a front gable and fixed 6-paned windows. **C**
  - Shed. c. 1936. One story weatherboard shed. **C**

Palmerdale Homesteads Historic District

Jefferson County, Alabama

Name of Property

County and State

- e. Equipment Shed. c. 1940. Front gable storage building with concrete block foundation and tin roof. **C**

65. 5555 Miles Springs Road. c. 1965. (1 non-contributing resource)

- a. House. c. 1965. One story manufactured home with aluminum, slightly pitched side gable, double hung aluminum windows, and concrete slab foundation. **NC**

### **North Valley Road**

66. Culvert. (1 contributing resource)

Stone culvert that runs along both sides of North Valley Road starting at 8136 North Valley Road on the west side and at Palmerdale School/now Palmerdale Homesteads Community Center (Inv. #41) on the east side. It runs north and south, through the 8300 block of the road. c. 1936.

Rounded cut stone culvert with two tunnel openings, cut stone base, and concrete slab where the culvert intersects at each resident's driveway. **C**

67. 8116 North Valley Road. c. 1945; c. 1975; c. 1990. (4 contributing resources)

- a. House. c. 1945; c. 1975; c. 1990. One story American Small House refaced with c. 1975 vinyl siding, 1:1 double hung wood windows, some c. 1975 1:1 double hung aluminum windows, c. 1990 standing seam hip roof, central porch bay with c. 1990 standing seam hip roof and original wood and glass door, and concrete foundation. **C**
- b. Barn. c. 1945. Weatherboard barn. **C**
- c. Shed. c. 1945. One story wood shed with 1:1 double hung wood windows, central wood and glass door, and wood pier foundation infilled with concrete block. **C**
- d. Carport. c. 1945. Open carport to the right of the house with a hip roof. **C**

68. 8130 North Valley Road. c. 1934; c. 1960. (5 contributing resources)

- a. House. c. 1934; c. 1960. One story with attic and rear bay weatherboard American Small House with cut stone foundation, side gable with wood vents, off center brick chimney, central entrance porch bay with a gable roof and aluminum awning enclosed c. 1960 with 1:1 aluminum windows. There also is a c. 1960 sliding aluminum window in the attic. **C**
- b. Pump House. c. 1934. Weatherboard pump house with a hip roof. **C**
- c. Barn/garage. c. 1934. On story weatherboard barn/garage. **C**
- d. Shed. c. 1960. One story aluminum shed with front gable. **C**
- e. Picket Fence. C. 1934. Rear wood picket fence. **C**

69. 8136 North Valley Road. c. 1934; c. 1980. (2 contributing resources; 2 non-contributing resources)

- a. Sims House. c. 1934; c. 1980. One story American Small House with original off-center brick chimney and 15-light off center front door. Substantial remodeling c. 1980 includes a brick foundation, standing seam metal roof, left side rear addition. The full front porch also was enclosed c. 1980 with aluminum siding, 1:1 double hung aluminum windows, and aluminum awnings; and there are c. 1980 2:2 double hung windows with aluminum awnings on the right bay. **NC**
- b. Barn. c. 1934. Weatherboard barn with side tin roof. **C**
- c. Pump house. c. 1934. Weatherboard pump house with hip roof. **C**
- d. Garage. c. 1980. Wood garage with hip roof. **NC**

Palmerdale Homesteads Historic District  
Name of Property

Jefferson County, Alabama  
County and State

70. 8165 North Valley Road. c. 1940; c. 1980. (1 contributing resource)

- a. Spitzer House. c. 1940; c. 1980. One story American Small House refaced c. 1980 with ½ brick and vinyl siding; side gable roof with wood vents; concrete foundation; left side rear wing with weatherboard and flat roof; right side open porch bay with original square wood columns; some 1:1 double hung wood windows; and off center front stoop with pine paneling, front gable, wrought iron posts, concrete steps, and aluminum awning. There are c. 1980 1:1 double hung aluminum windows on the front face, and right side c. 1980 2-car garage addition with 4:4 double hung aluminum windows. **C**

71. 8170 North Valley Road. c. 1934; c. 1960; c. 1990. (4 contributing resources; 2 non-contributing resources)

- a. House. c. 1934; c. 1960. One story weatherboard, with c. 1980 faux stone on the bottom 1/3 of the front façade, American Small House with side gable roof, 2:2 double hung wood windows, left side brick chimney and off center brick chimney with stone at its base, and a cut stone foundation. The left side porch bay has three arches each supported by a pair of square wood columns; the main entrance 9-light door is to the right of the porch. **C**
- b. Carport. c. 1960. Open aluminum carport with round steel posts. **C**
- c. Barn/garage. c. 1934. Weatherboard barn/garage with side tin gable roof. **C**
- d. Shed. c. 1960. Rear wood shed. **C**
- e. Shed. c. 1990. Rear aluminum shed. **NC**
- f. Shed. c. 1990. Rear aluminum shed. **NC**

72. 8190 North Valley Road. c. 1934. (3 contributing resources)

- a. House. c. 1934. One story weatherboard American Small House with left rear bay, cut stone foundation, side gable roof, off center brick chimney, 6:6 double hung wood windows; and right rear wing with a stoop with two square wood columns, partial gable, and narrow brick chimney. The main bay has a gabled porch with a pair of square wood columns on the right side, fish scale shingles in the gable and entrance door at a 90-degree angle. **C**
- b. Barn/garage. c. 1934. One story weatherboard barn/garage. **C**
- c. Pump house. c. 1934. Weatherboard pump house with a hip roof. **C**

73. 8185 North Valley Road. c. 1934; c. 1970. (3 contributing resources)

- a. House. c. 1934; c. 1970. One story American Small House with two bays. There is a tin side gable roof; 6:6 double hung wood windows; c. 1970 vinyl siding; cut stone foundation; and left side entrance porch bay with a spraddle roof, four wood square wood columns, wood and glass door with 3:3 fixed lights, and c. 1970 aluminum awning. **C**
- b. Barn/garage. c. 1934. One story weatherboard barn with tin side gable. **C**
- c. Pump House. c. 1934. One story weatherboard pump house with hip roof. **C**

74. 8199 North Valley Road. C. 1985. (1 non-contributing resource)

- a. House. c. 1985. One story contemporary brick house with a side gable, 9:9 double hung wood windows, central projecting porch bay with a side gable and turned wood posts, and a concrete foundation. **NC**

75. 8209 North Valley Road; c. 1934; c. 1980. (1 contributing resource; 1 non-contributing resource)

- a. House. c. 1934; c. 1980. Two story house with a front gable, partial cut stone foundation, and left side exposed brick chimney. It was substantially remodeled c. 1980 with 1:1 double hung aluminum windows throughout, left side octagonal bay, one story right side wing with 6:6 double hung aluminum windows and one fixed 20-pane aluminum windows, and brick foundation. **NC**
- b. Pump house. c. 1934. Weatherboard pump house with hip roof. **C**



Palmerdale Homesteads Historic District  
Name of Property

Jefferson County, Alabama  
County and State

76. 8210 North Valley Road. c. 1980s. (2 non-contributing resources)
- Manufactured house. c. 1980s. One story manufactured house with aluminum siding and slightly pitched side tin roof, 6:6 double hung aluminum windows, and a concrete block foundation. **NC**
  - Carport. c. 1980. Open aluminum carport with a side gable. **NC**
77. 8216 North Valley Road. c. 1934; c. 1980. (3 contributing resources; 1 non-contributing resource)
- House. c. 1934; c. 1980. One story American Small House with 1:1 double hung wood windows, right side rear bay, cut stone foundation, off center brick chimney, and c. 1980 standing seam side gable roof. There is a central open porch on the main front bay with brick floor, original wood and 9-light door flanked by wrought iron columns. **C**
  - Shed. c. 1980. One story aluminum shed. **NC**
  - Pump House. 1934. Weatherboard pump house with hip roof. **C**
  - Barn/garage. 1934. One story weatherboard barn/garage. **C**
78. 8223 North Valley Road. c. 1934; c. 1970. (3 contributing resources; 1 non-contributing resource)
- House. c. 1934; c. 1970. One story weatherboard American Small House with side gable, 6: 6 double hung wood windows, c. 1970 right side octagonal bay with vinyl siding, left side porch bay with front door at a 90-degree angle, off center brick chimney, rear bay, and cut stone foundation. There is also a left side c. 1970 carport with wrought iron posts. **C**
  - Barn/garage. c. 1934. One story weatherboard barn/garage with a side gable tin roof, and 2:2 double hung wood window. **C**
  - Shed. C. 2000. One story aluminum shed. **NC**
  - Stone wall. C. 1934. Cut stone wall along the front yard. **C**
79. 8236 North Valley Road. c. 1934; c. 1990. (3 contributing resources; 1 non-contributing resource)
- House. c. 1934; c. 1990. One story weatherboard American Small House with c. 1990 standing seam roof with front spraddle and 1:1 double hung aluminum windows; left of center brick chimney; right of center narrow brick chimney; left side projecting central entrance porch bay enclosed c. 1965 but with original wood and glass door; and cut stone foundation. **C**
  - Pump house. c. 1934. Weatherboard pump house with hip roof. **C**
  - Barn/garage. c. 1934. One story weatherboard barn/garage with side gable. **C**
  - Carport. c. 1990. Open aluminum carport. **NC**
80. 8246 North Valley Road. c. 1980s. (2 contributing resources; 1 non-contributing resource)
- House. c. 1980s. One story contemporary brick house with 1:1 double hung aluminum windows, brick chimney, large right side entrance bay, and concrete foundation. **NC**
  - Pump house. c. 1934. Weatherboard pump house with a hip roof. **C**
  - Garage/shed. c. 1934. One story weatherboard shed with side tin roof. **C**
81. 8247 North Valley Road. c. 1960. (1 contributing resource)
- Middleton House. c. 1960. One story brick plain style linear ranch house with a hip roof, concrete foundation, central front stoop with wrought iron posts and rail, built-in left side garage with wrought iron posts, 2:2 double hung wood windows, rear c. 1980s garage bay with aluminum siding and shed roof, and concrete foundation. **C**

Palmerdale Homesteads Historic District  
Name of Property

Jefferson County, Alabama  
County and State

82. 8254 North Valley Road. c. 1990s. (1 non-contributing resource)
- House. c. 1990s. One story house with vinyl siding, 9:6 double hung aluminum windows, open porch, and concrete foundation. **NC**
83. 8268 North Valley Road. c. 1934; c. 1965; c. 1980s; 2018. (3 contributing resources; 1 non-contributing)
- House. c. 1934; c. 1965; c. 1980s; 2018. One story weatherboard American Small House with two right side bays refaced with vinyl siding in 2018, off center brick chimney, 6:6 double hung wood windows, cut stone foundation, and c. 1980s standing seam metal roof with front spraddle. There is an open porch on the left front bay with three square wood columns and wood rail. In the central bay the front entrance is at a 90-degree angle; and to the right is a c. 1965 fixed wood 16-pane window. **C**
  - Barn/garage. c. 1934. One story weatherboard barn/garage with a side gable. **C**
  - Pump House. 1934. Weatherboard pump house with hip roof. **C**
  - Shed. c. 1980s. One story aluminum shed with metal gambrel roof and 1:1 double hung aluminum windows. **NC**
84. 8271 North Valley Road; c. 1934; c. 1980s. (3 contributing resources)
- House. c. 1934; c. 1980s. One story weatherboard American Small House, c. 1980s side gable metal standing seam roof, off center brick chimney, central front entrance bay enclosed c. 1980s, c. 1980s 9:9 double hung aluminum windows, and cut stone and concrete block foundation. **C**
  - Barn/garage. c. 1934. One story weatherboard barn/garage with side gable. **C**
  - Pump house. c. 1934. Weatherboard pump house with hip roof. **C**
85. 8282 North Valley Road. c. 1934; c. 1975. (3 contributing resources; 1 non-contributing resource)
- House. c. 1934; c. 1975. One story American Small House with c. 1975 vinyl siding, side gable roof, two off center brick chimneys (one left of center and one right of center), left side porch bay with c. 1975 wrought iron posts and aluminum awning, c. 1975 1:1 double hung aluminum windows, and cut stone foundation. **C**
  - Barn/garage. c. 1934. One story weatherboard barn/garage. **C**
  - Pump House. c. 1934. Weatherboard pump house with a hip roof. **C**
  - Shed. c. 1975. Aluminum shed with gambrel roof. **NC**
86. 8286 North Valley Road. c. 1934; c. 1995. (1 contributing resource; 2 non-contributing resources)
- House. c. 1995. One (right bay) and one-half story house with vinyl siding, partial hip roof, 6:6 double hung aluminum windows, dormer window with gable, and brick foundation. **NC**
  - Barn. c. 1934. One story weatherboard barn. **C**
  - Garage. c. 1995. Rear two car garage with front gable and vinyl siding. **NC**
87. 8289 North Valley Road. c. 1934. (1 contributing resource; 2 non-contributing resources)
- House. c. 1934. One story weatherboard American Small House with side gable, front porch with shed roof and c. 2005 wood ramp, off center brick chimney, 6:6 double hung wood windows, and brick foundation. **C**
  - Shed. c. 1970. Wood shed with side gable. **NC**
  - Shed. c. 1970. Aluminum shed with side gable. **NC**
88. 8311 North Valley Road. c. 1955; 1972. (1 non-contributing resource)
- House. c. 1955; 1972. One story weatherboard and brick Ranch style house with full above ground basement, central stoop with aluminum awning, 2:2 double hung wood windows, fixed

Palmerdale Homesteads Historic District  
Name of Property

Jefferson County, Alabama  
County and State

wood window to the left of the stoop, and large fixed wood window on the main front bay flanked by 2:2 double hung wood windows. The house built in the nearby industrial town of Tarrant, moved to its present site in 1972. **NC**

89. 8322 North Valley Road. c. 1934; c. 1955; c. 1980. (3 contributing resources)
- House. c. 1934; c. 1955; c. 1980. One story weatherboard American Small House with side gable, 6:6 double hung wood windows, cut stone foundation, two off center brick chimneys (one centered and one right of center), right side projecting porch bay with a shed roof enclosed c. 1980 with aluminum jalousie windows, and c. 1955 one story right rear addition with 2:2 double hung wood windows. **C**
  - Barn. One story weatherboard garage/barn. c. 1934. **C**
  - Pump house. c. 1934. One story weatherboard pump house with a hip roof. **C**
90. 8327 North Valley Road. c. 1940; c. 1970; c. 1990. (2 contributing resources; 1 non-contributing resource)
- House. c. 1940; c. 1970; c. 1990. One story L shaped weatherboard house with c. 1970 vinyl siding and 1:1 double hung aluminum windows some with aluminum awnings, c. 1990 standing seam cross gable roof, brick foundation, and off-center chimney. The left bay is extended with a front gable and wood vent; and the right side porch bay has the original 9-light wood and glass door, wood sidelights, and three square wood columns. **C**
  - Barn/garage. c. 1940. One story weatherboard barn/garage. **C**
  - House. c. 1970. One story manufactured home with aluminum siding, slightly pitched side gable, and concrete foundation. **NC**
91. 8332 North Valley Road. c. 1934; c. 1960. (2 contributing resources)
- House. c. 1934; c. 1960. One story weatherboard American Small House with a side gable, central brick chimney and left side exterior chimney, 6:6 double hung wood windows, left side screened porch with square wood columns, 9:9 double hung wood windows on the front bay, c. 1960 aluminum awnings throughout, and a cut stone foundation. **C**
  - Barn/garage. c. 1934. One story weatherboard barn/garage with 6:6 double hung wood windows. **C**
92. 8341 North Valley Road. c. 1975. (1 non-contributing resource)
- House. c. 1975. One story brick house with side gable standing seam metal roof, 9:9 double hung aluminum windows, left side built in garage bay, central porch with four round wood columns, and concrete foundation. **NC**
93. 8351 North Valley Road; c. late 1950s – early 1960s; c. 1980. (1 contributing resource; 1 non-contributing resource)
- House. c. late 1950s – early 1960s; c. 1980. One story brick house with divided fixed windows, low pitched side gable roof, off center brick chimney, right side entrance at a 90-degree angle, brick foundation, and c. 1980 two-story addition atop rear garage bay with aluminum siding. **NC**
  - Wall. c. late 1950s – early 1960s. Brick wall extending from front façade. **C**
94. 8364 North Valley Road. c. 1990. (1 non-contributing resource)
- House. c. 1990. One story house with vinyl siding, side gable roof, 6:6 double hung aluminum windows, central recessed porch bay flanked by projecting bays with front gables, and a brick foundation. **NC**

Palmerdale Homesteads Historic District  
Name of Property

Jefferson County, Alabama  
County and State

95. 8365 North Valley Road; c. 1934; c. 1985. (1 contributing resource; 2 non-contributing resources)
- House. c. 1934; c. 1985. One story house with a brick foundation and central brick chimney. It was substantially remodeled c. 1985 with vinyl siding, front gabled standing seam roof, double central French-type doors, large 20-pane fixed picture window, left of center enclosed porch, and left side one car garage. A one care garage has been added to the left of the structure. **NC**
  - Barn/garage. c. 1934. One story weatherboard barn/garage. **C**
  - Shed. c. 1985. One story aluminum shed with a flat roof. **NC**
96. 8368 North Valley Road. c. 1934. (2 contributing resources)
- House. c. 1934. One story weatherboard American Small House currently undergoing renovation. It has a front gable, 6:6 double hung wood windows, cut stone foundation, rear right side exterior brick chimney; and right side porch bay with front gable, three square wood columns, sunburst wood vents and decorative wood shingles. **C**
  - Barn/garage. c. 1934. One story weatherboard barn/garage. **C**
97. 8372 North Valley Road; c. 1934; c. 1945; c. 1955; c. 2000. (5 contributing resources; 1 non-contributing resource)
- House. c. 1934. One story weatherboard American Small House with front gable; cut stone foundation; left of center brick chimney; front projecting central porch bay with a pediment, wood posts and slightly decorative caps; and 1:1 double hung wood windows. **C**
  - Equipment Shed. c. 1945. One story weatherboard shed. **C**
  - Pump house. c. 1934. Weatherboard pump house with a hip roof. **C**
  - Barn. c. 1955. One story weatherboard barn with a side gable tin roof. **C**
  - Shed. c. 1955. Open right side shed with a side gable tin roof. **C**
  - Garage. c. 2000. Two-motorhome aluminum garage. **NC**
98. 8389 North Valley Road. c. 1934; c. 1955; c. 2000. (2 contributing resources; 1 non-contributing resource)
- House. c. 1934; c. 1955; c. 2000. One story weatherboard American Small House with left projecting bay, cut stone foundation, C. 2000 standing seam metal roof, and two off center brick chimneys (one left of center and another right of center). C. 1955 renovations included vinyl siding, 6:6 double hung aluminum windows, and the right side porch bay enclosed with stone and a 25-pane fixed aluminum window. **NC**
  - Bollards. C. 1934. Stone bollards flanking driveway entrance. **C**
  - Barn. c. 1934. One story weatherboard barn. **C**
99. 8400 North Valley Road. c. 1990. (1 non-contributing resource)
- House. c. 1990. One story manufactured home with 6:6 double hung wood windows, and side gable standing seam roof. **NC**
100. 8401 North Valley Road. c. 1940; c. 1970. (5 contributing resources)
- House. c. 1940; c. 1970. One story vinyl and brick American Small House with side gable, 6:6 double hung wood windows, off center brick chimney, and brick foundation. There is a right side recessed porch bay with a spraddle roof, chimney, corner square wooden column, wood rail, and wood step rail. wooden banisters; and 9:9 double hung wood windows on either side of the porch. A rear bay was added c. 1970 with aluminum siding. **C**
  - Barn/garage. c. 1934. One story weatherboard barn/garage with front gable tin roof and wood vent. **C**
  - Shed. c. 1970. One story aluminum shed with side tin roof. **C**
  - Garden plot to left side. c. 1940. **C**

Palmerdale Homesteads Historic District  
Name of Property

Jefferson County, Alabama  
County and State

- e. Laundry line posts. c. 1940. **C**

101.8408 North Valley Road. c. 1934; c. 1965. (2 contributing resources; 1 non-contributing resource)

- a. House. c. 1934; c. 1965. One story American Small House with side gable roof, c. 1965 aluminum siding, 6:6 double hung wood windows, central brick chimney, and cut stone foundation. There is a central projecting gabled porch bay enclosed c. 1965 with wood shingles and screen door, 1:1 double hung aluminum windows, and aluminum awnings.
- b. Barn/garage. c. 1934. One story weatherboard barn/garage. **C**
- c. Pump house. c. 1934. Weatherboard pump house with a hip roof. **C**
- d. Shed. c. 2000. One story aluminum shed with front gable. **NC**

### **Southfield Road Cut-off North**

102.5420 Southfield Road Cut-off North. c. 1940; c. 1965. (2 contributing resources; 1 non-contributing resource)

- a. House. c. 1940; c. 1965. One story American Small House that originally faced Brookwood Road but was reoriented c. 1960s to Southfield Road Cut-off North. There is a side gable roof, 2:2 double hung wood windows, exterior brick chimney, c. 1965 vinyl siding, and cut stone foundation. **C**
- b. Pump house. c. 1940. Weatherboard pump house with a hip roof. **C**
- c. Shed. c. 1985. One story metal shed with a gambrel roof and concrete foundation. **NC**

103. 5438 Southfield Road Cut-off North. c. 1955; c. 1970s. (1 non-contributing resource)

- a. House. c. 1955; c. 1970s. Mostly destroyed by fire as of 2/8/19. Description from 2018: One story house with c. 1970s vinyl siding, hip roof, and concrete block foundation. There are two c. 1970s projecting front bay windows with Palladian-style aluminum windows, and 8:1 fixed aluminum windows elsewhere. **NC**

104. 5456 Southfield Road Cut-off North. c. 1940; c. 2005. (2 contributing resources; 3 non-contributing resources)

- a. House. c. 1940; c. 2005. One story American Small House with a c. 2005 standing seam metal side gable roof, small central brick chimney and off center brick chimney, c. 2005 1:1 double hung aluminum windows, recessed off center front entrance bay with wrought iron railing, and a cut stone foundation. **C**
- b. Carport. c. 2005. Rear open aluminum carport. **NC**
- c. Shed. c. 2005. One story aluminum shed with front gable roof. **NC**
- d. Shed. c. 2005. One story aluminum shed with front gable roof. **NC**
- e. Pasture. c. 1940. To left and rear of house, enclosed by net wire fence. **C**

105. 5486 Southfield Road Cut-off North. c. 1940; c. 1970; c. 1990. (1 contributing resource; 4 non-contributing resources)

- a. House. c. 1940; c. 1970; c. 1990. One story weatherboard American Small House with a side gable, off center brick chimney, c. 1970s 1:1 double hung aluminum windows, central front porch bay enclosed c. 1970s with aluminum siding, aluminum awnings and a cut stone foundation. There is also a c. 1940 free standing rear garage with a side gable that was attached to the house by a c. 1990 breezeway faced with aluminum siding. **C**
- b. Shed. c. 1990. Large one story aluminum shed. **NC**
- c. Shed. c. 1990. Small one story aluminum shed. **NC**
- d. Shed. c. 1990. Small one story aluminum shed. **NC**

Palmerdale Homesteads Historic District  
Name of Property

Jefferson County, Alabama  
County and State

- e. Garage. c. 1970. Front gable one-car garage with vertical wood board siding, and a 1:1 window. **NC**

### **Southfield Road South (South Southfield Cut-off)**

106. Bridge and Culvert. c. 1936; c. 1980s. (1 contributing resource)  
Southfield Road South (South Southfield Cut-off) connecting Southfield Road North to Helms Circle.  
  
Cut stone culvert and cut stone bridge with original metal grate, four cut stone piers and a c.1980s wood rail. There is a stand-alone matching cut stone pier that is not connected by the wood rail. **C**
107. 5501 Southfield Road South (South Southfield Cut-off). 1936. (3 contributing resources)
- a. House. 1936. One story American Small House with vinyl siding, side gable roof with projecting front gable bay, two interior brick chimneys, enclosed side porch with 1:1 vinyl windows, 12:12 vinyl windows, and brick foundation. **C**
  - b. Pump House. 1936. Weatherboard pump house with front gable. **C**
  - c. Garage/Equipment Shed. 1936. Board-and-batten side gable garage with a central opening, six-light fixed wood windows on either side, exposed rafters, metal roof and attached shed roof wood two-car carport with square wood posts. **C**
108. 5523 Southfield Road South (South Southfield Cut-off). c. 1940; c. 2000. (1 non-contributing resource)
- a. House. c. 1940; c. 2000. One story American Small House with c. 2000 aluminum siding, left side gable and right side hip roof, two off center brick chimneys, right extended wing with a hip roof, 6:6 double hung wood windows, and a cut stone foundation. Two-car garage attached with breezeway. **NC**
109. 5531 Southfield Road South (South Southfield Cut-off). C. 1940; c. 1965. (2 contributing resources; 1 non-contributing resource)
- a. House. c. 1940; c. 1965. One story American Small House with side gable, c. 1965 aluminum siding, off center projecting front bay enclosed c. 1965 with aluminum siding, 6:6 double hung wood windows, off center brick chimney, and cut stone foundation. **C**
  - b. Shed. c. 1940. One story weatherboard shed with side gable roof. **C**
110. 5541. Southfield Road South (South Southfield Cut-off). C. 1970. (1 contributing resource)
- a. House. c. 1970. One story tri-level house with brick and vinyl siding, 6:6 double hung wood windows, front gable on right extended bay, slight projecting left brick bay, and concrete foundation. **C**
111. 5547 Southfield Road South (South Southfield Cut-off). C. 1965. (1 non-contributing resource)
- a. House. c. 1965. One story manufactured home with side gable roof, vinyl siding, and concrete slab foundation. Located behind 5541 Southfield Road South (#110). **NC**
112. 5553 Southfield Road South (South Southfield Cut-off). c. 1940; c.1960s. (1 contributing resource)
- a. House. c. 1940; 1960s. One story house with c. 1960s vinyl siding, side gable, left side extended bay with an exterior brick chimney, front porch with a front gable, off center brick chimney, 6:6 double hung wood windows, and a cut stone foundation. **C**
113. 5565 Southfield Road South. c. 1940. (1 contributing resource; 2 non-contributing resource)

Palmerdale Homesteads Historic District

Jefferson County, Alabama

Name of Property

County and State

- a. House. c. 1940. One story weatherboard American Small House with a side gable, one central brick chimney and an off center brick chimney, right side recessed front porch bay with three square wood columns, and a cut stone foundation. **C**
- b. Garage. c. 1980. Large garage with vinyl siding and front gable. **NC**
- c. Shed. c. 1980. Rear aluminum shed with side tin roof. **NC**

114. 5567 Southfield Road South (South Southfield Cut-off). C. 1960. (1 contributing resources; 2 non-contributing resources)
- a. House. c. 1960. One story Ranch brick and wood house with a hip roof, 2:2 double hung wood windows, left side recessed stoop with brick steps and wrought iron rail, right front exterior brick chimney, and concrete foundation. **C**
  - b. Carport. c. 1970s. Aluminum carport. **NC**
  - c. Storage shed. c. 1970s. Aluminum shed. **NC**
115. 5577 Southfield Road South. c. 1940; c. 1960s. (1 contributing resource)
- a. House. c. 1940; c. 1960s. One story spraddle roof house with c. 1960s vinyl siding, 3:1 double hung wood windows, and a concrete foundation. **C**

### **South Valley Road**

116. 7909. C. 1960's; c. 2000. (2 contributing resources; 2 non-contributing resources)
- a. House. c. 1960s. One story linear ranch with standing seam metal hip roof, vinyl siding, aluminum windows, and concrete block foundation. **C**
  - b. Well. In-ground concrete well in the front yard. **C**
  - c. Garage. c. 2000. Open metal garage. **NC**
  - d. Garage. c. 2000. Open metal garage. **NC**
117. 7914 South Valley Road. c. 1940. (1 contributing resource)
- a. House. c. 1940. One story painted brick American Small House with Classical Revival details, side gable roof, off center brick chimney, 6:6 double hung wood windows, brick foundation. There is an enclosed central projecting porch bay with front gable, eave returns, and two square wood columns on each side of the entrance door. **C**
118. 7924 South Valley Road. c. 1985. (1 contributing resource; 1 non-contributing resource)
- a. House. c. 1985. One story aluminum manufactured house with standing seam side gable, 1:1 double hung aluminum windows, and concrete block foundation. **NC**
  - b. Shed. c. 1955. One story shed with vinyl siding and a concrete block foundation. **C**
119. 7927 South Valley Road. c. 2000. (1 non-contributing resource)
- a. House. c. 2000. Two story house with one story wing with vinyl siding and faux stone facing, three dormers, 9:9 and 6:6 double hung aluminum windows, and a cut stone foundation. **NC**
120. 7938 South Valley Road. c. 1940; c. 1965. (3 contributing resources; 1 non-contributing resource)
- a. House. c. 1940; c. 1965. One story American Small House with asbestos shingles, side gable, off center brick chimney, central stoop bay with a small pediment roof and wrought iron columns, 6:6 double hung windows, and concrete block foundations. There is a slightly recessed right side bay with a 12-light fixed wood window flanked by 1:1 fixed wood windows, and aluminum awning. **C**
  - b. Barn/garage. c. 1940. One story weatherboard barn/garage. **C**

Palmerdale Homesteads Historic District

Jefferson County, Alabama

Name of Property

County and State

- c. Pump house. c. 1940. Weatherboard pump house with a hip roof. **C**
  - d. Carport. c. 1990. Open two-car aluminum carport. **NC**
121. 7939 South Valley Road. c. 1940, c. 1960. (1 contributing resource; 2 non-contributing resources)
- a. House. c. 1940; c. 1960. One-story American Small House with a split-level addition to the left, asbestos shingles, interior brick chimney, and brick foundation. The original house has a central porch that has been filled-in with a fixed multi-paned picture window, to the left of which the entrance is at a 90-degree angle; and the addition has 6:6 fixed wood windows. **C**
  - b. Shed. c. 1980. One story aluminum shed. **NC**
  - c. Trailer. c. 1980. Aluminum trailer with side gable, aluminum windows, and concrete foundation. **NC**
122. 7950 South Valley Road. c. 2000. (1 non-contributing resource)
- a. House. c. 2000. Two story house with vinyl siding, 1:1 double hung aluminum windows, and brick foundation. There is a large attached two-car garage with vinyl siding and two dormer windows. **NC**
123. 7970 South Valley Road. c. 1934. (4 contributing resources; 1 non-contributing resource)
- a. House. c. 1934. One story American Small House with vinyl siding, cross gable metal roof with front wood vent, 6:6 double hung wood windows, two off center brick chimneys, and front porch with shed roof. **C**
  - b. Barn/garage. c. 1934. One story weatherboard garage with side tin gable roof. **C**
  - c. Shed. c. 1934. One story weatherboard shed with side gable. **C**
  - d. Shed. c. 1980. One story wood shed with gambrel roof. **NC**
  - e. Pasture. c. 1934. Open field with tree line indicating previous fence line. **C**
124. 7963 South Valley Road. c. 1934; c. 1970. (1 contributing resource)
- a. House. c. 1934; c. 1970. One story American Small House with composite siding, cross gable roof, off center brick chimney, central entrance bay, 6:6 double hung wood windows, left side stoop, and cut stone foundation. **C**
125. 7971 South Valley Road. c. 1934. (4 contributing resources)
- a. House. c. 1934. One story weatherboard American Small House with side gable metal roof, right side recessed porch bay with spraddle roof and wrought iron posts, 6:6 double hung wood windows, and a cut stone foundation. **C**
  - b. Barn/shed. c. 1934. One story weatherboard with side gable tin roof, front shed roof, and concrete foundation. **C**
  - c. Shed. c. 1934. Small weatherboard shed with front gable and 1:1 double hung wood windows. **C**
  - d. Pumphouse. c. 1934. Weatherboard with hipped roof. **C**
126. 7987 South Valley Road. c. 1960. (1 contributing resource)
- a. House. c. 1960. One story brick Ranch style house with a side gable, front stoop with a gable and wrought iron railing, 6:6 double hung wood windows, and a brick foundation. A right side built-in garage was enclosed c. 1970 with wood siding and 6:6 double hung wood windows. **C**
127. 7992 South Valley Road. c. 1934; c. 1990. (4 contributing resources; 1 non-contributing resource)
- a. House. c. 1934; c. 1990. One story American Small House with c. 1990 aluminum siding, 6:6 double hung wood windows, off center brick chimney, projecting front bay with the entrance at a



Palmerdale Homesteads Historic District

Jefferson County, Alabama

Name of Property

County and State

- 90-degree angle, and cut stone foundation. There is a c. 1990 two car garage addition on the right side of the house. **C**
- b. Barn. c. 1934. Very intact weatherboard barn with a spraddle roof. **C**
  - c. Pump house. c. 1934; c. 1990. Pump house with hip roof refaced c. 1990 with vinyl. **C**
  - d. Storage building. Aluminum siding with shed roof. c. 1990. **NC**
  - e. Pasture. c. 1934. Enclosed by metal net wire fencing. **C**
128. 8001 South Valley Road. 1978; c. 1990. (2 non-contributing resources)
- a. House. 1978. Two-story Contemporary style split level house with wood siding and brick foundation. **NC**
  - b. Shed. c. 1990. One story aluminum shed. **NC**
129. 8013 South Valley Road. c. 1934; c. 1960. (3 contributing resources)
- a. House. c. 1934; c. 1960. One story weatherboard American Small House with gable roof with off center brick chimney, central entrance porch bay with wood banister and c. 1960 awning, 1:1 double hung wood windows, and cut stone foundation. Left side wing was added c. 1960 with fixed "picture" window flanked by 1:1 double hung wood window. **C**
  - b. Garage. c. 1934. One story weatherboard barn with a side gable tin roof. **C**
  - c. Fence. c. 1934. Wide wood picket fence in the front yard. **C**
130. 8017 South Valley Road. c. 1934; c. 1990. (4 contributing resources; 1 non-contributing resource)
- a. House. c. 1934; c. 1990. One story American Small House with side gable, central brick chimney, c. 1990 aluminum siding, c. 1990 6:6 double hung aluminum windows, left side front porch with square wood columns enclosed c. 1990 with aluminum siding and 6:6 double hung aluminum windows, aluminum awnings, and cut stone foundation. **C**
  - b. Barn. c. 1934. One story weatherboard barn. **C**
  - c. Garage. c. 1934. One story weatherboard garage with front gable. **C**
  - d. Carport. c. 1990. Aluminum, open frame. **NC**
  - e. Pasture. c. 1934. In rear of house, enclosed with 4 board livestock fence. **C**
131. Stone Bridge located between properties 8017 South Valley Road and 5273 Miles Springs Road.  
c. 1934. (1 contributing resource).  
Cut stone bridge that crosses South Valley Road with a metal grate and stepped cut stone buttresses.  
**C**

### **West Hill Road**

132. 8009 West Hill Road. c. 1970. (1 non-contributing resource)
- a. House. c. 1970. One story manufactured home with side gable roof, aluminum siding, and concrete slab foundation. **NC**
133. 8009 West Hill Road. c. 1940; c. 1970s; c. 2000. (1 contributing resource)
- a. House. c. 1940; c. 1970s; c. 2000. One story American Small House with a side gable with c. 2000 metal, central extended front porch with pairs of square wood columns, narrow exterior brick chimney on the left wing and a large central brick chimney. There is c. 1970s vinyl siding and 6:6 double hung aluminum windows, and a brick foundation. **C**
134. 8042 West Hill Road. c. 1940; c. 1980s. (1 non-contributing resource)

Palmerdale Homesteads Historic District

Jefferson County, Alabama

Name of Property

County and State

- a. House. c. 1940; c. 1980s. One story bungalow with off center brick chimney completely remodeled c. 1980 with an off center brick chimney, c. 1980 stained wood siding, and concrete foundation. **NC**
135. 8054 West Hill Road. c. 1940; c. 1990s. (1 contributing resource)
- a. House. c. 1940; c. 1990s. One story front spraddle roof house with c. 1990s aluminum siding, 6:6 double hung wood windows, off center brick chimney, c. 1990 left side bay with vinyl siding and 6:6 double hung aluminum windows, and concrete foundation. The full front porch bay has the original wood and glass door, 6:6 double hung wood windows, four round wood columns, and four rounded brick steps. **C**
136. 8073 West Hill Road. c. 1940; c. 1970s. (1 contributing resource)
- a. House. c. 1940; c. 1970s. One story "L" shaped house with a side tin gable roof, c. 1970s aluminum siding, 6:6 double hung wood windows, left wing porch that was glassed in c. 1970s, and a stacked rock foundation. **C**
137. 8090 West Hill Road. c. 1990. (2 non-contributing resources)
- a. House. c. 1990. One story log cabin with off center brick chimney, fixed wood windows, side gable metal standing seam roof, and concrete foundation. **NC**
  - b. Garage/shed. c. 1990. Open wood garage/shed. **NC**
138. 8094 West Hill Road. c. 1990. (1 non-contributing resource)
- a. House. c. 1990. Two story house set way back from the street with vinyl siding, side gable, and brick foundation. **NC**
139. 8098 West Hill Road. 1936; c. 1960. (2 contributing resources)
- a. House. 1936; c. 1960. One story U-shaped house with side gable roof with wood vent and off center brick chimney. It was remodeled c. 1960 with brick and wood, 1:1 double hung aluminum windows, and large rear wing with brick chimney and hip roof. **C**
  - b. Shed. c. 1936. One story weatherboard shed with a tin spraddle roof. **C**
140. 8101 West Hill Road. c. 1940; c. 1980s. (4 contributing resources)
- a. Kniep House. c. 1940; c. 1980s. One story weatherboard "L" shaped house with a left end exterior brick chimney, 6:6 double hung wood windows, cross gable roof, and a brick foundation. The "L" was enclosed c. 1980s with aluminum siding. **C**
  - b. Shed. c. 1940. One story weatherboard shed with a front gable. **C**
  - c. Garage/tenant House. c. 1940. One story garage/tenant house with composite siding and front gable. **C**
  - d. Retaining Wall. **C**. 1940. Fieldstone retaining wall along driveway. **C**
141. 8110 West Hill Road. c. 1980. (1 non-contributing resource)
- a. House. c. 1980. Partially underground one story house with vinyl and concrete block, standing seam metal hip roof, central brick chimney, small two-pane aluminum windows, and concrete block foundation. **NC**
142. 8113 West Hill Road. c. 1985. (1 non-contributing resource)
- a. House. c. 1985. One story "suburban-style" brick house with side gable, 9:9 double hung wood windows, central stoop with wrought iron rail, and brick foundation. **NC**

Palmerdale Homesteads Historic District

Jefferson County, Alabama

Name of Property

County and State

143. 8124 West Hill Road. c. 1940; c. 1960s. (1 contributing resource; 2 non-contributing resources)
- a. House. c. 1940; c. 1960s. One story American Small House with asphalt shingles, side gable, right side wing, central interior brick chimney, c. 1960s 1:1 double hung aluminum windows, and concrete foundation. The central entrance bay has a front gable and c. 1960s vinyl siding. **C**
  - b. House. c. 2000. Small guest house in rear. **NC**
  - c. Garage. c. 2000. Large metal garage. **NC**
144. 8125 West Hill Road. c. 1940; 1970. (2 contributing resources)
- a. House. c. 1940; 1970. One story American Small House with side gable roof, vinyl siding, left side wing, 1:1 double hung aluminum windows, two off center brick chimneys, and a full front porch. **C**
  - b. Garage. c. 1960. One story weatherboard garage with a front gable tin roof. **C**
145. 8132 West Hill Road. c. 1970s. (1 non-contributing resource)
- a. House. c. 1970s. One story ranch house setback far from the road (in rear of 8140 West Hill Road, most likely subdivided from), not visible from public right of way. **NC**
146. 8140 West Hill Road. c. 2000. (1 non-contributing resource)
- a. House. c. 2000. One story brick house with hipped metal roof, wrap around porch, 1:1 aluminum windows, exterior brick chimney, and off-centered gable entrance. **NC**
147. 8133 West Hill Road. c. 1960. (1 contributing resource)
- a. House. c. 1960. One story Ranch style house with a hip roof and concrete foundation. **C**
148. 8151 West Hill Road. c. 1950; c. 1970s. (1 contributing resource)
- a. House. c. 1950; c. 1970s. One story hipped roof house with c. 1970s aluminum siding, gable on hip over the front porch, 2:2 double hung wood windows, and concrete block foundation. **C**
149. 8158 West Hill Road. 1955, c. 1975. (1 contributing resource)
- a. House. 1955, c. 1975. One story linear ranch with cross gable aluminum roof and siding, 1:1 aluminum windows, right-side carport. **C**
150. 8168 West Hill Road. c. 1960. (1 contributing resource)
- a. House. c. 1960. One story contemporary courtyard ranch with asymmetrical front gable roof, brick veneer and vertical wood siding, fixed pane windows, aluminum and glass doors, carport part of recessed courtyard, supported by round metal posts. **C**
151. 8175 West Hill Road. c. 1940. (3 contributing resources; 1 non-contributing resource)
- a. House. c. 1940. One story U-shaped house with a side gable tin roof, projecting front gable bays on each end, each with an exterior brick chimney, central recessed porch with spraddle roof, 6:6 double hung wood windows, and a brick foundation. **C**
  - b. Barn/shed. c. 1940. One story U-shaped wood building with a side tin gable roof, and 6-paned fixed wood windows. **C**
  - c. Shed. c. 1990. One story wood shed with front gable. **NC**
  - d. Pumphouse. c. 1940. Side gable roof, weatherboard with tin roof, and two vertical wood board doors. **C**

Palmerdale Homesteads Historic District

Jefferson County, Alabama

Name of Property

County and State

152. 8185 West Hill Road. c. 1950. (1 contributing resource)  
a. House. c. 1950. One story hip roof, left-side exterior brick chimney, paired 2:2 wood windows, central projecting porch bay with partial hip roof and decorative wrought iron posts, concrete block foundation. **C**
153. 8194 West Hill Road. c. 1940; c. 1980s. (1 contributing resource)  
a. House. c. 1940; c. 1980s. One story side gable roof house with metal roof, right-side recessed bay, projecting porch bay with front gable and eave returns, paired square wood columns, off-center brick chimney, and 6:6 double hung wood windows. **C**
154. 8199 West Hill Road. c. 1940; c. 1960s. (2 contributing resources)  
a. House. c. 1940; c. 1960s. One story house with a front spraddle roof, off center brick chimney, 6:6 double hung wood windows, side lights at the front entrance, left side extended bay, c. 1960s aluminum siding, and a brick foundation. **C**  
b. Garage. c. 1940. Side gable board-and-batten garage with metal roof, exposed rafter tails, and fixed 6 pane windows. **C**
155. 8216 West Hill Road. c. 1940s; c. 1960. (1 contributing resource)  
a. House. c. 1940s; c. 1960. One story weatherboard and brick American Small House with left rear bay, 6:6 double hung wood windows, central brick chimney, full screened porch with shed roof and c. 1960 aluminum awning. **C**
156. 8269 West Hill Road. c. 1920. (2 contributing resources; 1 non-contributing resource)  
a. House. c. 1920. One story, L-shaped house with cross gable roof, 6:6 wood windows, weatherboard, left recessed porch with square wood columns and wood vergeboard across the top, decorative iron cresting across the ridge of the roof, and brick foundation. **C**  
b. House. c. 1990s. One-and-a-half story rustic house with side gable metal roof, weatherboard and vertical wood board siding, front gable entrance and 6:6 vinyl windows. **NC**  
c. Pumphouse. c. 1920. Frame structure with hip roof. **C**
157. 8262 West Hill Road. c. 1970s; c. 1990s. (1 non-contributing resource)  
a. House. c. 1970s; c. 1990s. Two story house with a side gable and a one story right side bay wing. Substantial remodeling c. 1970s included 6:6 double hung windows, vinyl siding, brick foundation, and very large left side addition. **NC**
158. 8268 West Hill Road. 1940; c. 1990s. (2 contributing resources; 1 non-contributing resource)  
a. House. 1940; c. 1990s. One story brick veneered American Small House, central hip roof with two projecting front gable bays, vinyl in gables, large brick chimney in right bay, off-center chimney in center bay, recessed porch in center with spraddle roof. **C**  
b. Pump house. c. 1940. Weatherboard with side gable roof with two wood entrance doors and shed roof addition to the rear. **C**  
c. Shed. c. 1990s. Gambrel roof shed, aluminum. **NC**
159. 8304 West Hill Road. c. 1940; c. 1960. (1 contributing resource)  
a. House. c. 1940; c. 1960. One story American Small House with right side projecting bay, side gable, 6:6 double hung wood windows, right side rear bay addition with 6:6 double hung aluminum windows, and brick foundation. **C**

Palmerdale Homesteads Historic District

Jefferson County, Alabama

Name of Property

County and State

160. 8305 West Hill Road. c. 1940; c. 1970s. (3 contributing resources; 1 non-contributing resource)
- a. House. c. 1940; c. 1970s. One story U-shaped house with cut stone foundation and cut stone on the front porch wall, c. 1970s 6:6 double hung aluminum windows and vinyl siding, and a brick foundation. The off center "U" was enclosed with glass c. 1970s. Two car garage attached by open breezeway. **C**
  - b. Shed. c. 1940. One story weatherboard shed with a front gable. **C**
  - c. Pool. c. 2000. Enclosed with white vinyl fence. **NC**
  - d. Storage shed. c. 1940. Side gable roof with weatherboard and metal roof, central wood and glass door, one 6:6 wood window to the left of door. **C**
161. 8330 West Hill Road. c. 1960. (1 contributing resource)
- a. House. c. 1960. One story plain style linear ranch with cluster and attached carport to the left, low-pitch side gable roof, vinyl siding, aluminum 1:1 windows, large multi-light picture window to right of entrance, and brick foundation. **C**
162. 8333 West Hill Road. c. 1940; c. 1985. (1 non-contributing resource)
- a. House. c. 1940; c. 1985. One story "L" shaped house that was remodeled c. 1985 with a very large left side one story and two story wing, vinyl siding, and 6:6 double hung aluminum windows. **NC**
163. 8345 West Hill Road. c. 1910. (2 contributing resources)
- a. House. c. 1910. One story weatherboard Craftsman style bungalow with a tin side gable roof, exposed wood rafters, 6:6 double hung wood windows, left side screened porch, and plaster over brick foundation. **C**
  - b. Shed. c. 1940. Shed roof with aluminum walls. **C**
164. 8354 West Hill Road. c. 1940; c. 1970s. (1 contributing resource)
- a. House. c. 1940; c. 1970s. One story house with a side tin gable roof, 6:6 double hung wood windows, right side open porch with pairs of square wood columns with simple wood capitals, c. 1970s aluminum siding, two central brick chimneys, and a brick foundation. **C**
165. 8355 West Hill Road. 1971; 1997. (1 non-contributing resource)
- a. House. 1971; 1997. One story weatherboard compact ranch with side gable roof, right side exterior brick chimney, 9:9 double hung wood windows, and brick foundation. There is a right side projecting porch bay with front gable and wood vent, pair of 9:9 double hung wood windows, and original wood and glass door. Siding and brick veneer added 1997. **NC**

---

## 8. Statement of Significance

**Applicable National Register Criteria:** (Mark "x" in one or more boxes for the criteria qualifying the property for National Register listing)

- A. Property is associated with events that have made a significant contribution to the broad patterns of our history.
- B. Property is associated with the lives of persons significant in our past.
- C. Property embodies the distinctive characteristics of a type, period, or method of construction or represents the work of a master,

Palmerdale Homesteads Historic District  
Name of Property

Jefferson County, Alabama  
County and State

or possesses high artistic values, or represents a significant and distinguishable entity whose components lack individual distinction.

D. Property has yielded, or is likely to yield, information important in prehistory or history.

**Criteria Considerations:** (mark "x" in all the boxes that apply)

- A. Owned by a religious institution or used for religious purposes
- B. Removed from its original location
- C. A birthplace or grave
- D. A cemetery
- E. A reconstructed building, object, or structure
- F. A commemorative property
- G. Less than 50 years old or achieving significance within the past 50 years

**Areas of Significance:** (enter categories from instructions)

Social History  
Politics/Government  
Community Planning and Development  
Architecture  
\_\_\_\_\_  
\_\_\_\_\_  
\_\_\_\_\_

**Period of Significance:**

1934-1970  
\_\_\_\_\_  
\_\_\_\_\_

**Significant Dates:**

\_\_\_\_\_

**Significant Person:** (complete only if Criterion B is marked above)

N/A  
\_\_\_\_\_  
\_\_\_\_\_

**Cultural Affiliation:**

N/A  
\_\_\_\_\_  
\_\_\_\_\_

**Architect / Builder:**

N/A  
\_\_\_\_\_  
\_\_\_\_\_

\_\_\_\_\_

Palmerdale Homesteads Historic District  
Name of Property

Jefferson County, Alabama  
County and State

**Statement of Significance Summary Paragraph:** (Provide a summary paragraph that includes level of significance, applicable criteria, justification for the period of significance, and any applicable criteria considerations.)

Palmerdale Homesteads Historic District is located in Palmerdale, Jefferson County, Alabama and is eligible for listing in the National Register of Historic Places based on Criterion A at the state level of significance for the areas of politics/government and social history as Alabama's first community developed by the Resettlement Administration, a New Deal agency. Palmerdale Homesteads is also eligible under Criterion C in the areas of community planning and development as a statewide significant federally planned residential community and architecture as a good example of New Deal influences within American architecture and the American Small House type and Colonial Revival style that were popular during this period. The period of significance starts with the beginning of the project in 1934 and extends to 1970, to include the continued growth and development that occurred at Palmerdale Homesteads between the end of federal involvement in the 1940s and the community's continued success in post-war years.

---

**Narrative Statement of Significance** (Provide at least **one** paragraph for each area of significance.)

Criterion A: Politics/Government

The Palmerdale Homesteads Historic District is eligible for the National Register under criterion A for politics and government, because the district is a direct result of government action taken during the Great Depression to alleviate the effects from the economic collapse in the 1930s. Several government agencies on the state and federal level, as well as the various significant politicians, collaborated to ensure the success of this project. They worked together to identify specific needs in particularly impacted areas and develop solutions to provide immediate relief, through targeted government programming.

Alabama Governor Bibb Graves attended a 1933 conference at Warm Springs, Georgia, where he and six other southern governors met with President Franklin D. Roosevelt on matters of relief in their prospective states. In keeping with the "back to the farm" movement that gained popularity in the 1910s and 1920s, New Deal social theorists believed that providing means for people in need of relief to own land and produce their own crops would not only better their physical standard of living but also make them better citizens. Sociologist David Campbell argues, "Moreover, citizens of the economically troubled, industrializing nation viewed rural life as idyllic and desirable."<sup>1</sup> In addition, Campbell says, "Roosevelt believed that American cities were housing an increasingly disproportionate segment of the population and wanted to see rural land put to better use."<sup>2</sup> In response, Roosevelt's administration provided funding for community development programs in rural areas under the Federal Emergency Relief Agency (FERA).

Established May 22, 1933, this agency was often referred to at the state level as the Emergency Relief Agency of Alabama (ERA in newspapers) and had offices in Montgomery, Alabama. Also, in 1933, the National Industrial Recovery Act authorized the creation of a Division of Subsistence Homesteads within the Department of Interior. This allowed for FERA to launch a Rural Rehabilitation program the following year in 1934. FERA's Rural Rehabilitation program was placed under the newly designated Resettlement Administration (RA).<sup>3</sup> It was the

---

<sup>1</sup> David Campbell, "Skyline Farms," *Encyclopedia of Alabama*, <http://encyclopediaofalabama.org/face/Article.jsp?id=h-1546> (accessed January 8, 2019).

<sup>2</sup> Ibid.

<sup>3</sup>With the exception of the program's first year under a branch of the Division of Rural Rehabilitation and Stranded Populations that dissolved in 1935 and subsumed the Department of Interior's Division of Subsistence Homesteads.

Palmerdale Homesteads Historic District  
Name of Property

Jefferson County, Alabama  
County and State

RA that administered the Palmerdale Homesteads project from 1935 until 1937, when the RA's projects were turned over to the Farm Security Administration (FSA).

The FSA was created in 1937 by the Bankhead-Jones Farm Tenancy Act, which effectively transferred Resettlement Administration (RA) projects to the FSA.<sup>4</sup> Like the Federal Emergency Relief Agency (FERA) and the RA before it, the FSA focused its efforts on rural rehabilitation. The FSA continued to administer the project until roughly 1942 when it too dissolved, after which, federal involvement in subsistence homestead projects declined, ceasing completely in 1944, and individual homestead projects met various levels of success or failure.<sup>5</sup>

The Resettlement Administration (RA) was comprised of two divisions. One division focused on resettlement of suburban communities, such as Cahaba Homesteads in Trussville, Alabama or Palmerdale Homesteads in Palmerdale. The other made up the Division of Rural Rehabilitation and Resettlement, such as Skyline Farms in Jackson County, Alabama and Gee's Bend in Wilcox County, Alabama. Dr. Rexford Tugwell, a professor of economics at Columbia University and advisor to Roosevelt, headed the RA and is credited with developing the concept of the program sometimes referred to as "Tugwell Towns" or "Greenbelt Towns" in reference to Tugwell's first of these towns built in Greenbelt, Maryland. Resettlement homesteads like Palmerdale Homesteads were believed to be the best way to assist struggling farmers by providing them with affordable homes of their own within easy access to jobs in nearby cities. Because so many southern farmers were tenant farmers or sharecroppers, these agencies were further designed to facilitate land ownership. Often, the best way to accomplish this goal involved cooperative memberships within a newly established community.<sup>6</sup>

*The WPA Guide to Alabama, The Cotton State* was a Federal Writers' Project published in 1941 that describes the type of project Palmerdale was and notes its significance as part of these Alabama projects. The authors say, "Federal rural resettlement projects in Alabama include three types. In the close-community type, land is in one block and community facilities are provided. There are six such communities in the State: Bankhead Farms, Cahaba Community, Cumberland Mountain Farms [Skyline], Greenwood Homesteads, Mt. Olive Homesteads, and Palmerdale Homesteads, all completed and 98 percent occupied. Five of them are in the Birmingham industrial area and their 647 family units represent the largest concentration of such developments in the Nation."<sup>7</sup>

These projects were to be built using funding from the Works Progress Administration, another New Deal agency, and located near but not adjacent to industrial cities. Homesteaders could therefore work in the cities but retreat to their homesteads where generous land allowed for supplemental income or food. This was the plan for Palmerdale Homesteads. New Deal historian Dr. Carroll Van West describes the subsistence homestead ideal:

Nationwide, the RA's Rural Rehabilitation Division from 1935-1937 supervised twenty-five original FERA communities and thirty-four original Subsistence Homesteads while establishing another thirty-four RA communities. The projects were described as 'subsistence homesteads' because reformers assumed that the best living environment for these depressed rural areas was one in which a family had enough

<sup>4</sup> Phoebe Cutler, *The Public Landscape of the New Deal* (New Haven: Yale University Press, 1985), 19.

<sup>5</sup> *Ibid.*, 118.

<sup>6</sup> "A New Deal Town Fights for Its Future," *The Living New Deal*, <https://livingnewdeal.org/tag/greenbelt-towns/> (accessed July 3, 2019).

<sup>7</sup> Federal Writers Project, *The WPA Guide to Alabama: The Cotton State*, ebook (San Antonio: Trinity University Press, 2014), accessed on January 17, 2019, <https://play.google.com/books/reader?id=EE3pCAAQBAJ&hl=en&pg=GBS.PT3>.



Palmerdale Homesteads Historic District  
Name of Property

Jefferson County, Alabama  
County and State

land to produce a garden, raise some livestock and poultry, and then have good roads to provide access to nearby factories where cash wages could be earned.<sup>8</sup>

Once appropriations were approved for statewide subsistence-homesteading programs, locations for these projects were determined by the state legislature. Although every state was hard hit during the period, no state was perhaps hit harder than Alabama. Fortunately, the State had strong political ties to Roosevelt, including Senators John Bankhead and Lister Hill and Congressman Carl Elliot. These men were instrumental in writing and supporting New Deal legislation and convincing their constituents in Alabama to support federal programs for economic relief. They were able to position Alabama at the head of the list for many New Deal initiatives, including the Resettlement program. In Jefferson County alone there were four Subsistence Homestead Communities: Cahaba or Slagheap Village in Trussville, Mount Olive in Gardendale, Greenwood in Bessemer, and Palmer Station or Palmerdale Homesteads in Palmerdale. A 1937 newspaper article called Birmingham “the center of [the Resettlement Administration’s] greatest program in the South.”<sup>9</sup>

There was also one in Jasper, the county seat of Walker County, which was home to Senator Bankhead Congressman Elliot. It was known as Bankhead Farms but for the most part is no longer extant. Senator Bankhead himself sponsored the program in 1933. Of the \$25 million appropriated for the program nationwide, he pulled \$6 million – nearly one-quarter of the total – into Jefferson and Walker Counties.

#### Criterion A: Social History

Palmerdale Homesteads is also eligible under Criterion A for social history at the statewide level of significance. Subsistence homestead projects were viewed experimentally by the federal government and first conceived and designed by New Deal reformers and social theorists. Palmerdale Homesteads was the first subsistence homestead community developed in Alabama. It was created by legislation and inspired by these reformers.

“Ideal Community Rising Near Pinson,” is how *The Birmingham News* described the Palmerdale Homesteads development in a May 1935 article. Having been an area with a few “ramshackle shacks” on it, the federal government’s decision to build a resettlement project there would turn it into an “ideal community with modern homes, gardens, farms and a self-sustaining class of residents of which any community might well be proud.”<sup>10</sup> In a “carefully worked out” formula, the article said, the population of the “Palmer division . . . will represent a true cross section of the county for there will be industrial workers, clerical workers, perhaps a physician, barber and others from all walks of life, whose income ranges from \$800 to \$1,200 annually.”<sup>11</sup> In accordance with the prevailing standards of the day, Resettlement Administration communities were racially segregated. At Palmerdale all residents were to be white and all had to apply for inclusion and be approved by the government. Chosen applicants had to possess “good character, [with a] family and employment.”<sup>12</sup> “Shiftless people,” it was declared, would be a threat to the success of the somewhat controversial social and economic experiment. To be certain of a family’s personal character, “lengthy interviews were conducted with those wishing to move to the homestead as well as background investigations, credit checks, and reference letters to assure that most residents were formerly machinists, skilled artisans, professionals or workers in service occupations.”<sup>13</sup> They wanted families with regular income but in lower income brackets. One newspaper article from the *Birmingham*

<sup>8</sup> Carroll Van West, *Tennessee’s New Deal Landscapes: A Guidebook* (Knoxville: University of Tennessee Press, 2001), 129.

<sup>9</sup> “County Resettlement Ventures Began Two Years Ago This Week,” *The Birmingham News*, April 20, 1937.

<sup>10</sup> “Ideal Community Rising Near Pinson,” *The Birmingham News*, May 26, 1935.

<sup>11</sup> *Ibid.*

<sup>12</sup> *Ibid.*

<sup>13</sup> *Ibid.*

Palmerdale Homesteads Historic District

Jefferson County, Alabama

Name of Property

County and State

News in 1934 went so far as to describe this project as one for “white collar” men and a “democratic effort to equalize opportunity.”<sup>14</sup> The same article defends the project and argues it is not Marxism.

More than 1,500 families applied to the project. Of the initial 60 families selected, there were miners from nearby Bradford Mines and employees from the First National Bank in downtown Birmingham. Most of these residents came from inferior housing in rural areas and overcrowded housing in urban areas. Some, however, lost everything following the stock market crash of 1929. Jackie Rachieles Spitzer was six-years-old at the start of the project when her family moved to Palmerdale from Birmingham’s Edgewood community, where her family “lost their dream home” in the Depression and rented until they received word they were accepted into the Palmerdale project. Her father worked for First National Bank in downtown Birmingham, and her mother was a homemaker.<sup>15</sup>

Though apparently successful to many of the individual families served by the homesteads project, there was known controversy around the government’s projects viewed as too socialistic. RA head Rexford Tugwell knew this; “Tugwell realized that he would have to rely heavily on photographs to tell the story of the RA. Aware of the importance of familiarizing the public, especially city dwellers, with the plight of the rural poor, he felt that words alone would not create a groundswell of support.”<sup>16</sup> To document the success of the RA’s projects, and like other New Deal agencies, the RA put artists to work to showcase the agency’s efforts. In 1935, Tugwell established the RA’s Informational Division and hired his former Columbia University colleague Roy Emerson Stryker to direct a group of photographers to document the success of its projects. Stryker’s photographers created over 270,000 images, depicting the lives of ordinary Americans across the country.<sup>17</sup> “We tried to present the ordinary in an extraordinary manner,” argued photographer, Ben Shahn. “But that’s a paradox, because the only thing extraordinary about it was that it was so ordinary. Nobody had ever done it before, deliberately. Now it’s called documentary.”<sup>18</sup>

Two of Stryker’s photographers visited Palmerdale Homesteads. Between 1935 and 1936, Carl Mydans photographed drilling for water for the new project and houses and their adjoining outbuildings and garden plots where residents kept chickens. He also photographed what appears to be company housing at nearby Bradford Mines, captioning the photograph, “From these towns came many of the people living in the Palmerdale Homesteads.” It seems he is drawing a contrast between what types of housing homesteaders came from and their new homesteads. The house in the Bradford Mines image is a small, frame, possibly duplex housing atop a pier foundation. The images of bright, white clad Colonial Revival houses atop solid stone foundations in the Palmerdale Homesteads photographs stand in stark comparison. Mydans also photographed the “old schoolhouse” located on Clay-Palmerdale Road. The new school was not constructed yet. This was likely taken to later showcase the progress made once the new school was built, and this is just the type of documentation Stryker and the Resettlement Administration would have been looking for.<sup>19</sup>

In 1937, another New Deal photographer under Stryker visited Palmerdale. Arthur Rothstein visited the homesteads and photographed a group of school children and homesteaders working in their gardens. Again, this showcased the progress and continued development of the project.

---

<sup>14</sup> “Palmer Station Project to Offer Opportunity to Obtain Homes,” *The Birmingham News*, August, 12, 1934.

<sup>15</sup> Interview with Jackie Rachieles Spitzer by Katie Randall, January 8, 2019.

<sup>16</sup> Michael L. Carlebach, “Documentary and Propaganda: The Photographs of the Farm Security Administration,” *The Journal of Decorative and Propaganda Arts* 8 (Spring 1988): 15-17.

<sup>17</sup> Roy Emerson Stryker and Nancy C. Wood, *In This Proud Land: America, 1935-1943, as seen in the FSA Photographs* (New York: Galahad Books, 1973), 7.

<sup>18</sup> Davis Pratt, *The Photographic Eye of Ben Shahn* (Cambridge: Harvard University Press, 1975), x.

<sup>19</sup> For more information about Stryker and Resettlement Administration photographers, see the Skyline Farms Multiple Property Submission.

Palmerdale Homesteads Historic District  
Name of Property

Jefferson County, Alabama  
County and State

### Criterion C: Community Planning and Development

Palmerdale Homesteads was the first Resettlement community planned in Alabama. Begun in 1934, D. H. Greer served as architect and construction supervisor and William Kessler as project manager. The project included 578 acres, and the first 60 houses were constructed by WPA workers on the east side of Highway 75. These were mostly local carpenters, at one point totaling 200 local men employed through the WPA.<sup>20</sup> Forty-two more houses were added between 1935-36. Each home included 4 to 6 rooms with a gable or spraddle roof and a brick chimney for heat. However, one early resident, Jean Walker, indicated that the houses had poor underpinning and were consequently drafty.

Financial arrangements were set up to encourage residents to rent with an option to buy; and to make purchase possible, the government required no down payment. Thirty-year mortgages were offered at 3% interest. Rent, or sale price, depended on the size of the house and acreage and, since the average income of a family was around \$100 monthly, most rental or house payments were no higher than \$10.00 to \$19.00 per month.

Described in Birmingham newspapers as “semi-rural” and “the government’s low cost housing venture,” each homestead included 2-8 acres with an average of 2.5 acres.<sup>21</sup> Each family was to combine their wage jobs with subsistence garden plots. Wives were primarily responsible for maintaining garden plots while husbands were supposed to keep one or more cows. Because the women would be the ones most burdened with the isolation of rural life – as opposed to the urban lives they were leaving – government social workers believed that they were, in fact, the key to the project’s overall success. Regular interviews between social workers and wives were intended to closely monitor their acceptance of their new lives. Extension Service and Home Economics agents also frequented the area, offering instructional courses to residents, such as canning for women.<sup>22</sup>

Between 1940-41, additional houses were built on both sides of Highway 75. Styles were similar to the earlier houses but some foundations were of concrete instead of cut stone. In addition, a new U-shaped style was introduced. Four of these are extant in the District.

The original plan set aside generous parcels on which to build a community store and a school. The Community Co-op Store was built and owned by the city in c. 1936 but was sold to resident G. T. and Jean Walker to operate. The Co-op rented mules and plowing equipment and assisted residents with gardening and farming techniques. At some point, a filling station was added to one end of the store. Also, in 1936, residents petitioned the government for a post office which was granted. The post office first operated out of a house on East Hill Road, then from the Co-op Store, and finally from its own building constructed in c. 1960 at its current location on Highway 75. Berry Howell, a resident of the homesteads and a woman, served as the community’s first postmaster. This came during a time when women postmasters were on the rise but still relatively rare prior to America’s entrance into World War II.<sup>23</sup>

Three years later, residents organized the Palmerdale Civic Group to push for the school. Though land had been set aside for one, it had yet to be constructed. Residents Alice Gaines Rachieles and Martha Burston spearheaded the effort. Prior to obtaining a school for the project area, students were bussed to Pinson, which was four miles up the then unpaved highway. After that, they met in an old two-room schoolhouse that was located on Clay-Palmerdale Road. As the student population grew, younger grades began meeting in one of the

<sup>20</sup> “Ideal Community Rising Near Pinson,” *The Birmingham News*, May 26, 1935.

<sup>21</sup> Jefferson County Board of Equalization Records, 1934-70.

<sup>22</sup> Interview with Jackie Rachieles Spitzer by Katie Randall, January 8, 2019.

<sup>23</sup> USPS Historian, “Women Postmasters,” <https://about.usps.com/who-we-are/postal-history/women-postmasters.pdf>, accessed January 17, 2019.

Palmerdale Homesteads Historic District  
Name of Property

Jefferson County, Alabama  
County and State

project houses on Miles Springs Road. Finally, the Palmerdale Civic Group's lobbying paid off, and a new school was built for the project. In 1939, WPA funds were allocated for the school which was centrally located east of Highway 75. It was quickly sold to the Jefferson County Board of Education for \$1.00. Former resident, Jackie Spitzer said it was the nicest building many of the children had ever seen, adding, "It had beautiful restrooms - like a castle to us."<sup>24</sup>

The school always doubled as a community center for social activities, important, it was agreed, to creating a viable and happy community. One resident remembers dances in the school auditorium during World War II when most of the men were away and "there was nothing to do." She also remembers they used the auditorium as a skating rink.<sup>25</sup>

By 1940, the community was thriving with 102 homesteads. A news article described a community gathering:

Women of the community served a luncheon in the school dining room of foods raised on the project. The Alabama Power Company presented a movie lecture on raising of foods. A tour was made of homes of the community where demonstrations were given of how the residents are taking part in a land use program, raising cows and other livestock as well as growing vegetables.<sup>26</sup>

Today, the District remains largely intact but quite threatened by plans for a federal interstate highway. In addition, Pinson's "suburban" sprawl threatens the rural environment of the District.

### Criterion C: Architecture

The structures built for the Resettlement Administration's Palmerdale Homesteads in Jefferson County, Alabama, are good examples of the American Small House type that was popularized during and immediately following the Great Depression. They also serve as good examples of architectural styles and building practices typical of New Deal agencies. The use of local materials, such as timber and cut stone, is a signature design element in New Deal projects. The significance of New Deal structures goes well beyond architecture and use of local materials, however. In a chapter called "Community Buildings and Institutions" in *New Deal Landscapes in Tennessee: A Guidebook*, historian and author Dr. Carroll Van West writes:

The types of buildings constructed to house the wide-ranging community projects and newly established community groups varied in their building materials and architectural style. Some are magnificent examples of labor-intensive stone masonry, while others are grandiose and flamboyant examples of Colonial Revival or Classical Revival style. Still others are one-story, unadorned buildings designed simply to fulfill their function, and little more. Whatever their size, material, or styling, however, New Deal community buildings still speak of the reformers' hope to uplift rural and urban life, even in the harshest days of the Great Depression.<sup>27</sup>

The built environment left over from New Deal programs reflects reformers' ideologies. The structures and changes to rural southern landscapes are evidence of this tumultuous time in America's past and are a lasting legacy of many New Deal agencies.

<sup>24</sup> Interview with Jackie Rachieles Spitzer by Katie Randall, January 8, 2019.

<sup>25</sup> Ibid.

<sup>26</sup> "Palmerdale is Cited By Teacher As Model For Community Living," *The Birmingham News*, August, 13, 1943.

<sup>27</sup> West, *Tennessee's New Deal Landscapes: A Guide Book*, 80.

Palmerdale Homesteads Historic District  
Name of Property

Jefferson County, Alabama  
County and State

*The WPA Guide to Alabama, The Cotton State* says of then modern suburbs, “Careful planning and uniform or harmonious styles of architecture have made the suburbs pleasing and have avoided the incongruity, so often encountered, of an Italian villa set at close quarters between a Georgian cottage and a copy of a Greek Revival plantation house.”<sup>28</sup>

Homesteads at Palmerdale were designed with modernity in mind from the community’s layout to conveniences such as indoor plumbing. These houses typically replaced more modest or inferior housing found in such rural areas. Similarly, the community buildings, such as the school, replaced outdated structures, such as the two-room schoolhouse on Clay-Palmerdale Road the community was using prior to the construction of the new school. In addition to being too small to meet the needs of the community, the former schoolhouse did not have indoor plumbing.

In reference to the architecture produced by New Deal agencies, the authors of *The WPA Guide to Alabama* have this to say, “In addition to their functional uses, these excellently designed structures are examples of good architecture that the common man can understand and appreciate. They may well stimulate Alabama not only to cherish its old houses but to supplant its inadequate ones with buildings befitting its progress in other fields.”<sup>29</sup>

According to Library of Congress records, all houses at Palmerdale Homesteads were built in a “southern colonial style.” Some were built with a “Greek Revival” pedimented porch while others had right or left wing side porches with a spraddle roof to suggest a cottage appearance. Houses were initially painted white or clad in brick veneer and spaced about 50 to 100 yards apart with the bulk of acreage running front to back on each lot. Each home had a combination garage/barn and separate pump house, many of which remain. These too reflect a modest Colonial Revival style with multi-light windows in the garages and a hipped roof with a pinnacle on top of the pumphouses. Some of the outbuildings built alongside the second wave of building between 1940-41 were less stylistic. Most of these later pumphouses, for instance, were built two doors across with a simple side-gable or shed roof. Oral history suggests that one side of the pumphouse housed the pump while the other side was used for storage. The combination garage/barn buildings reportedly had space for one car, a workbench and tool storage, a cow stall, chicken house, and storage for cow feed. Newspaper articles from the time describe chicken pens and cow lots that were laid out by the government as well.

The community buildings at Palmerdale, including the school and store, were also constructed in the Colonial Revival style. Colonial Revival elements found on these buildings include decorative brick quoins, multi-light double hung windows, Palladian transoms, and cornice returns. The school also features a symmetrical facade and the Co-op a cupola. Colonial Revival was a popular style in the southeastern region of the United States between World War I and World War II. The Great Depression was a time of great instability for most Americans, and, in response, many embraced patriotism. Architectural historian Phoebe Cutler sums it up by saying, “To achieve harmony the nation grasped for the old—the pioneer, the colonial, the Renaissance.”<sup>30</sup>

The idea of designing buildings in a style that was popular within a given region is another signature of New Deal projects, more specifically of WPA projects versus those of the CCC or the National Park Service, and is reflected at Palmerdale Homesteads. Regionalism in New Deal architecture, like the Rustic style and prevalence of bungalows to the Park Service, was an influence of the Arts and Crafts movement and was a common practice of the WPA. A 1993 publication of the National Park Service says, “[The Arts and Crafts movement] recognized diverse regional features of buildings and sites, such as the Prairie style architecture of the Midwest, the open

<sup>28</sup> Federal Writers Project, *The WPA Guide to Alabama: The Cotton State*, ebook (San Antonio: Trinity University Press, 2014), accessed on January 17, 2019, <https://play.google.com/books/reader?id=EE3pCAAQBAJ&hl=en&pg=GBS.PT3>.

<sup>29</sup>Ibid.

<sup>30</sup> Cutler, *The Public Landscape of the New Deal*, 145.

Palmerdale Homesteads Historic District  
Name of Property

Jefferson County, Alabama  
County and State

terraces and patios of the Southwest, and the log construction of pioneers.”<sup>31</sup> Similarly, the Colonial Revival style of architecture was commonplace and growing in popularity throughout the Southeast.

Unlike some Resettlement Administration communities, particularly those in more rural areas such as Skyline Farms in Jackson County, residents of Palmerdale Homesteads had full time employment outside of farming from the start of the project. As a result, many Palmerdale families were eventually able to purchase their homes and farms, keeping them well after federal involvement ended in the 1940s. This stands in direct contrast to the majority of those at Skyline where only a handful of residents managed to maintain their farms in post-war years. At Palmerdale, some families retained their property’s original acreage, while others subdivided their lots as they grew less dependent on farming. Similarly, some families built new or additional houses to accommodate their family’s growing or changing needs, while others added onto their project era house. Many of these additions were in styles that were then popular and not necessarily in keeping with the original Colonial or Classical Revival styles. Therefore, resources at Palmerdale Homesteads built after the period of federal involvement are significant as examples of continued community development and investment made by project families and others moving into the now established community. They represent architectural styles that were prevalent in American suburbs at the time, such as the American Small House movement immediately post-war and Ranch and Split-level forms in the later 1950s and 1960s. There are some exemplary examples of specific styles from this time period as well, including a Contemporary style courtyard ranch at 8168 West Hill Road (#150).

---

## 9. Major Bibliographic References

**Bibliography** (cite the books, articles, and other sources used in preparing this form)

*The Birmingham News*

Carlebach, Michael L. “Documentary and Propaganda: The Photographs of the Farm Security Administration.” *The Journal of Decorative and Propaganda Arts*. Spring 1988.

Cutler, Phoebe. *The Public Landscape of the New Deal*. New Haven: Yale University Press, 1985.

Federal Writers Project. *The WPA Guide to Alabama: The Cotton State*. eBook. San Antonio: Trinity University Press, 2014. Accessed on January 17, 2019.

<https://play.google.com/books/reader?id=EE3pCAAQBAJ&hl=en&pg=GBS.PT3>.

McClelland, Linda Flint. *Presenting Nature: The Historic Landscape Design of the National Park Service, 1916 to 1942*. Washington D.C.: U.S. Department of the Interior, 1993.

Pratt, Davis. *The Photographic Eye of Ben Shahn*. Cambridge: Harvard University Press, 1975.

Randall, Katie. Personal interview with Jackie Rachieles Spitzer. January 8, 2019.

Stryker, Roy Emerson and Nancy C. Wood. *In This Proud Land: America, 1935-1943, as seen in the FSA Photographs*. New York: Galahad Books, 1973.

USPS Historian. “Women Postmasters.” <http://about.usps.com/who-we-are/postal-history/women-postmasters.pdf>. Accessed January 17, 2019.

---

<sup>31</sup> Linda Flint McClelland, *Presenting Nature: The Historic Landscape Design of the National Park Service, 1916 to 1942* (Washington D.C.: U.S. Department of the Interior, 1993), 67.

Palmerdale Homesteads Historic District  
Name of Property

Jefferson County, Alabama  
County and State

West, Carroll Van. *Tennessee's New Deal Landscapes: A Guidebook*. Knoxville: University of Tennessee Press, 2001.

**Previous documentation of file (NPS):**

- preliminary determination of individual listing (36 CFR 67) has been requested
- previously listed in the National Register
- previously determined eligible by the National Register
- designated a National Historic Landmark
- recorded by Historic American Buildings Survey # \_\_\_\_\_
- recorded by Historic American Engineering Record # \_\_\_\_\_
- recorded by Historic American Landscape Survey # \_\_\_\_\_

**Primary location of additional data:**

- State Historic Preservation Office
  - Other State agency
  - Federal agency
  - Local government
  - University
  - Other
- Name of repository: Library of Congress Prints and Photographs Division

**Historic Resources Survey Number (if assigned):** \_\_\_\_\_

**10. Geographical Data**

**Acreage of Property** 420

Use either the UTM system or latitude/longitude coordinates

**Latitude/Longitude Coordinates (decimal degrees)**

Datum if other than WGS84:	
----------------------------	--

Enter coordinates to 6 decimal places.

- |              |           |            |            |
|--------------|-----------|------------|------------|
| 1. Latitude: | 33.747697 | Longitude: | -86.652138 |
| 2. Latitude: | 33.746434 | Longitude: | -86.639092 |
| 3. Latitude: | 33.740290 | Longitude: | -86.634765 |
| 4. Latitude: | 33.732851 | Longitude: | -86.637715 |
| 5. Latitude: | 33.734135 | Longitude: | -86.646706 |
| 6. Latitude: | 33.738791 | Longitude: | -86.655392 |

**OR UTM References**

Datum (indicated on USGS map):

- NAD 1927     or      NAD 1983

1. Zone: \_\_\_\_\_                          Easting: \_\_\_\_\_                          Northing: \_\_\_\_\_

Palmerdale Homesteads Historic District

Jefferson County, Alabama

Name of Property

County and State

2. Zone:	Easting:	Northing:
3. Zone:	Easting:	Northing:
4. Zone:	Easting:	Northing:
5. Zone:	Easting:	Northing:

### Verbal Boundary Description (describe the boundaries of the property)

The Palmerdale Homesteads Historic District is made up of approximately 420 acres and is roughly bound by West Hill Road to the west; North Valley Road to the east; Southfield Road North and South as well as the terminus of South Valley Road to the south; the northern terminus of West Hill Road to the north, crossing Highway 75 and connecting east to North Valley Road.

### Boundary Justification (explain why the boundaries were selected)

The Palmerdale Homesteads Historic District includes all of the contributing contiguous resources located within the Palmerdale Homesteads neighborhood and is shown on the attached Palmerdale Homesteads Historic District map. This area includes resources that are historically associated with the New Deal era Resettlement Administration's subsistence homesteads project in Palmerdale, Jefferson County, Alabama.

---

### 11. Form prepared by:

Name/Title:	Pamela Sterne King, Historic Preservationist and Katie Randall, Historic Preservationist			
Organization:	PSKing Associates			
Street & number:	3307 Altaloma Way			
City/Town:	Birmingham	State:	AL	
		Zip Code:	35216	
Email:	pamking@uab.edu, katie@aforepreservation.com		Phone:	615-743-5862
Date:	March 14, 2019			

### Additional Documentation

Submit the following items with the completed form:

- **Maps:** A USGS map or equivalent (7.5 or 15-minute series) indicating the property's location.
- **Sketch map** for historic districts and properties having large acreage or numerous resources. Key all photographs to this map.
- **Additional items:** Check with the SHPO, TPO, or FPO for any additional items.

### Photographs

Submit clear and descriptive photographs. The size of each image must be 1600x1200 pixels (minimum), 3000x2000 preferred, at 300 ppi (pixels per inch) or larger. Key all photographs to the sketch map. Each photograph must be numbered and that number must correspond to the photograph number on the photo log. For simplicity, the name of the photographer, photo date, etc. may be listed once on the photograph log and doesn't need to be labeled on every photograph.

### Photo Log

Name or Property:	Palmerdale Homesteads Historic District
City or Vicinity:	Pinson
County:	Jefferson
	State: AL
Photographer:	Katie Randall



Palmerdale Homesteads Historic District

Jefferson County, Alabama

Name of Property

County and State

Date Photographed: February 8, 2019

**Photo #1** (AL\_Jefferson County\_Palmerdale Homesteads Historic District\_0001)

Pasture and three board fence to the left of 7984 Brookwood Road, camera facing southwest.

**Photo #2** (AL\_Jefferson County\_Palmerdale Homesteads Historic District\_0002)

Façade, 8102 Brookwood Road, c. 1960, camera facing southwest.

**Photo #3** (AL\_Jefferson County\_Palmerdale Homesteads Historic District\_0003)

Façade, 8086 Brookwood Road, c. 1980, non-contributing resource, camera facing east.

**Photo #4** (AL\_Jefferson County\_Palmerdale Homesteads Historic District\_0004)

5420 Southfield Road North, c. 1940, camera facing northeast.

**Photo #5** (AL\_Jefferson County\_Palmerdale Homesteads Historic District\_0005)

5523 Southfield Road South, c. 1940 with c. 2000 additions and alterations, non-contributing resource, camera facing south.

**Photo #6** (AL\_Jefferson County\_Palmerdale Homesteads Historic District\_0006)

5270 Miles Springs Road, c. 2000, non-contributing resource, camera facing north.

**Photo #7** (AL\_Jefferson County\_Palmerdale Homesteads Historic District\_0007)

House and outbuildings at 5292 Miles Springs Road, 1934, camera facing north.

**Photo #8** (AL\_Jefferson County\_Palmerdale Homesteads Historic District\_0008)

Palmerdale Homesteads School, 5300 Miles Springs Road, camera facing northeast.

**Photo #9** (AL\_Jefferson County\_Palmerdale Homesteads Historic District\_0009)

House that was used as the first post office, 5456 Miles Springs Road, c. 1934, camera facing north.

**Photo #10** (AL\_Jefferson County\_Palmerdale Homesteads Historic District\_0010)

New infill and rolling pasture at 5553 Miles Springs Road, non-contributing resource, camera facing south.

**Photo #11** (AL\_Jefferson County\_Palmerdale Homesteads Historic District\_0011)

Terraced field at 5523 Miles Springs Road, camera facing southwest.

**Photo #12** (AL\_Jefferson County\_Palmerdale Homesteads Historic District\_0012)

House and outbuildings, 5455 Miles Springs Road, c. 1934, camera facing south.

**Photo #13** (AL\_Jefferson County\_Palmerdale Homesteads Historic District\_0013)

House and outbuildings, 5251 Miles Springs Road, c. 1934, camera facing south.

**Photo #14** (AL\_Jefferson County\_Palmerdale Homesteads Historic District\_0014)

Intersection of Miles Springs and North Valley Roads, camera facing north.

**Photo #15** (AL\_Jefferson County\_Palmerdale Homesteads Historic District\_0015)

Miles Springs and pasture enclosed with post and net wire fencing at the intersection of Miles Springs and South Valley Roads, camera facing east.

**Photo #16** (AL\_Jefferson County\_Palmerdale Homesteads Historic District\_0016)

Civilian Conservation Corps bridge, 1934, crossing Miles Springs at South Valley Road, camera facing south.

**Photo #17** (AL\_Jefferson County\_Palmerdale Homesteads Historic District\_0017)

Civilian Conservation Corps bridge, 1934, South Valley Road, camera facing southeast.

**Photo #18** (AL\_Jefferson County\_Palmerdale Homesteads Historic District\_0018)

Miles Springs and pasture enclosed with net wire fencing, fronting Miles Springs Road, camera facing west.

**Photo #19** (AL\_Jefferson County\_Palmerdale Homesteads Historic District\_0019)

House, 7971 South Valley Road, c. 1934, camera facing east.

**Photo #20** (AL\_Jefferson County\_Palmerdale Homesteads Historic District\_0020)

House with split-level addition, 7939 South Valley Road, c. 1934 and 1960, camera facing southeast.

**Photo #21** (AL\_Jefferson County\_Palmerdale Homesteads Historic District\_0021)

"Class of 1944" stamped in sidewalk in front of Palmerdale School entrance, camera facing northeast.

**Photo #22** (AL\_Jefferson County\_Palmerdale Homesteads Historic District\_0022)

Façade, Palmerdale Homesteads School, 5300 Miles Springs Road, camera facing east.

**Photo #23** (AL\_Jefferson County\_Palmerdale Homesteads Historic District\_0023)

House and outbuildings, 8130 North Valley Road, c. 1934, camera facing northwest.

**Photo #24** (AL\_Jefferson County\_Palmerdale Homesteads Historic District\_0024)

Looking south on North Valley Road, camera facing southwest.

Palmerdale Homesteads Historic District

Jefferson County, Alabama

Name of Property

County and State

- Photo #25** (AL\_Jefferson County\_Palmerdale Homesteads Historic District\_0025)  
House and outbuildings, 8170 North Valley Road, c. 1934, camera facing northwest.
- Photo #26** (AL\_Jefferson County\_Palmerdale Homesteads Historic District\_0026)  
House and pumphouse, 8268 North Valley Road, c. 1934 and 1960, camera facing northwest.
- Photo #27** (AL\_Jefferson County\_Palmerdale Homesteads Historic District\_0027)  
House and outbuildings, 8282 North Valley Road, c. 1934, camera facing northwest.
- Photo #28** (AL\_Jefferson County\_Palmerdale Homesteads Historic District\_0028)  
Looking south on North Valley Road, camera facing southwest.
- Photo #29** (AL\_Jefferson County\_Palmerdale Homesteads Historic District\_0029)  
House and pumphouse, 8271 North Valley Road, c. 1934, camera facing southeast.
- Photo #30** (AL\_Jefferson County\_Palmerdale Homesteads Historic District\_0030)  
Civilian Conservation Corps stone culverts, c. 1934, North Valley Road, camera facing south.
- Photo #31** (AL\_Jefferson County\_Palmerdale Homesteads Historic District\_0031)  
Palmerdale Homesteads Co-op, c. 1934, 8039 Highway 75, camera facing east.
- Photo #32** (AL\_Jefferson County\_Palmerdale Homesteads Historic District\_0032)  
Palmerdale Post Office, c. 1960, 8079 Highway 75, camera facing northeast.
- Photo #33** (AL\_Jefferson County\_Palmerdale Homesteads Historic District\_0033)  
Palmerdale Baptist Church, 8039 Highway 75, camera facing southeast.
- Photo #34** (AL\_Jefferson County\_Palmerdale Homesteads Historic District\_0034)  
Modern contributing infill, 8168 West Hill Road, 1960, camera facing northwest.
- Photo #35** (AL\_Jefferson County\_Palmerdale Homesteads Historic District\_0035)  
West Hill Road looking north, camera facing northeast.
- Photo #36** (AL\_Jefferson County\_Palmerdale Homesteads Historic District\_0036)  
House, 8268 West Hill Road, c. 1940, camera facing west.
- Photo #37** (AL\_Jefferson County\_Palmerdale Homesteads Historic District\_0037)  
House, 8354 West Hill Road, c. 1940, camera facing west.
- Photo #38** (AL\_Jefferson County\_Palmerdale Homesteads Historic District\_0038)  
House, 8199 West Hill Road, c. 1940, camera facing southeast.
- Photo #39** (AL\_Jefferson County\_Palmerdale Homesteads Historic District\_0039)  
House and outbuildings with larger pumphouse, 8175 West Hill Road, c. 1940, camera facing south.
- Photo #40** (AL\_Jefferson County\_Palmerdale Homesteads Historic District\_0040)  
Intersection of Highway 75 and Midwood Road, camera facing northeast.
- Photo #41** (AL\_Jefferson County\_Palmerdale Homesteads Historic District\_0041)  
Looking south on South Valley Road, camera facing southeast.
- Photo #42** (AL\_Jefferson County\_Palmerdale Homesteads Historic District\_0042)  
Looking east on Miles Springs Road.

Palmerdale Homesteads Historic District

Jefferson County, Alabama

Name of Property

County and State



**Figure 1: House, 1935**

Library of Congress Prints and Photographs Division

Palmerdale Homesteads Historic District

Jefferson County, Alabama

Name of Property

County and State



**Figure 2: House and family, 1936**

Library of Congress Prints and Photographs Division



**Figure 3: Homesteads and pumphouses in background of man plowing, 1937**

Library of Congress Prints and Photographs Division

Palmerdale Homesteads Historic District

Jefferson County, Alabama

Name of Property

County and State



**Figure 4: House at Palmerdale Homesteads, 1936**  
Library of Congress Prints and Photographs Division



**Figure 5: House and barn, 1936**  
Library of Congress Prints and Photographs Division

Palmerdale Homesteads Historic District

Jefferson County, Alabama

Name of Property

County and State



**Figure 6: House and Outbuildings, 1960**

Birmingham Public Library Archives

Photo shows alterations made to a homestead c. 1950s

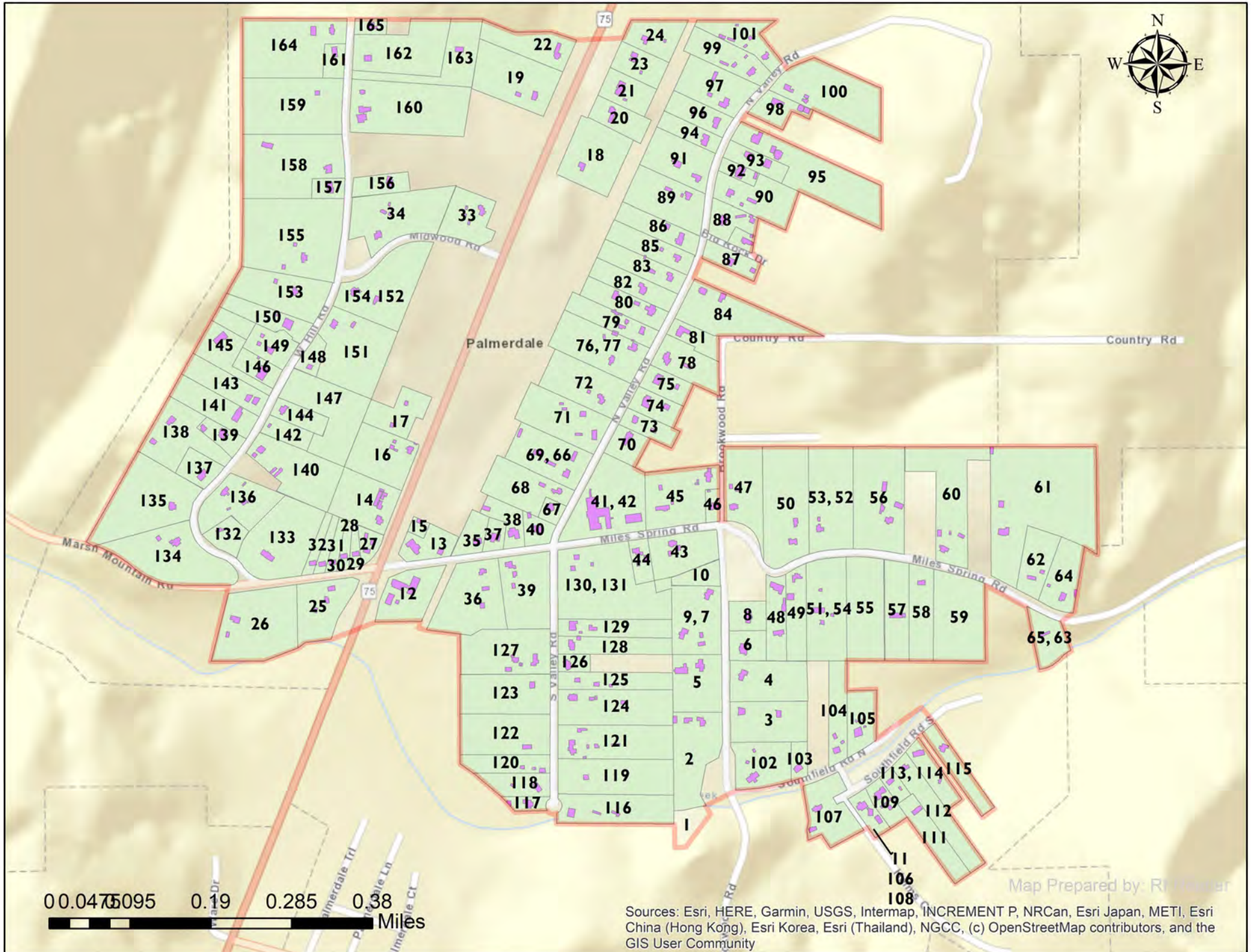
Palmerdale Homesteads Historic District  
Name of Property

Jefferson County, Alabama  
County and State

**Paperwork Reduction Act Statement:** This information is being collected for applications to the National Register of Historic Places to nominate properties for listing or determine eligibility for listing, to list properties, and to amend existing listings. Response to this request is required to obtain a benefit in accordance with the National Historic Preservation Act, as amended (16 U.S.C.460 et seq.).

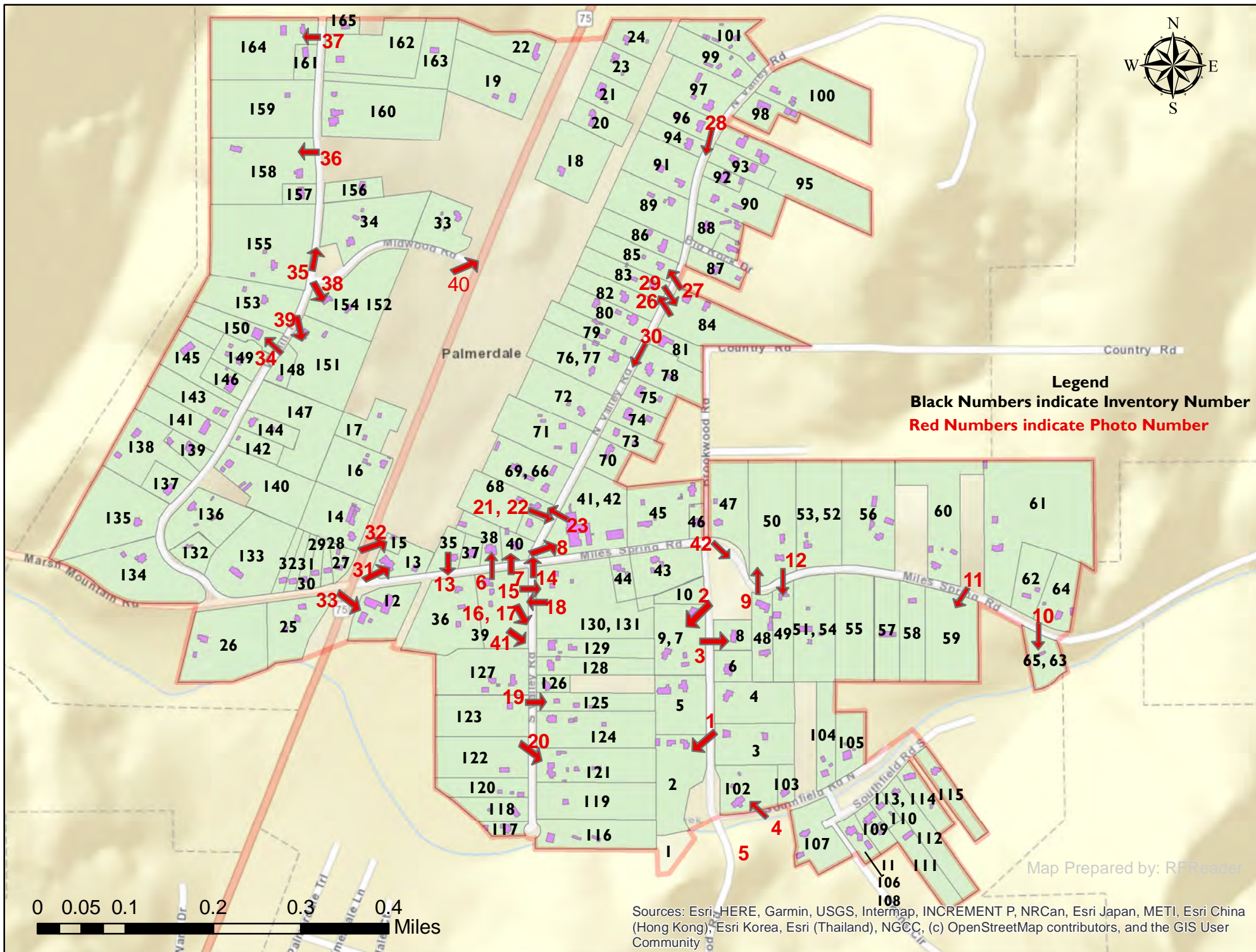
**Estimated Burden Statement:** Public reporting burden for this form is estimated to average 100 hours per response including time for reviewing instructions, gathering and maintaining data, and completing and reviewing the form. Direct comments regarding this burden estimate or any aspect of this form to the Office of Planning and Performance Management, U.S. Dept. of the Interior, 1849 C. Street, NW, Washington, DC.

# Palmerdale Homesteads Historic District in Jefferson County



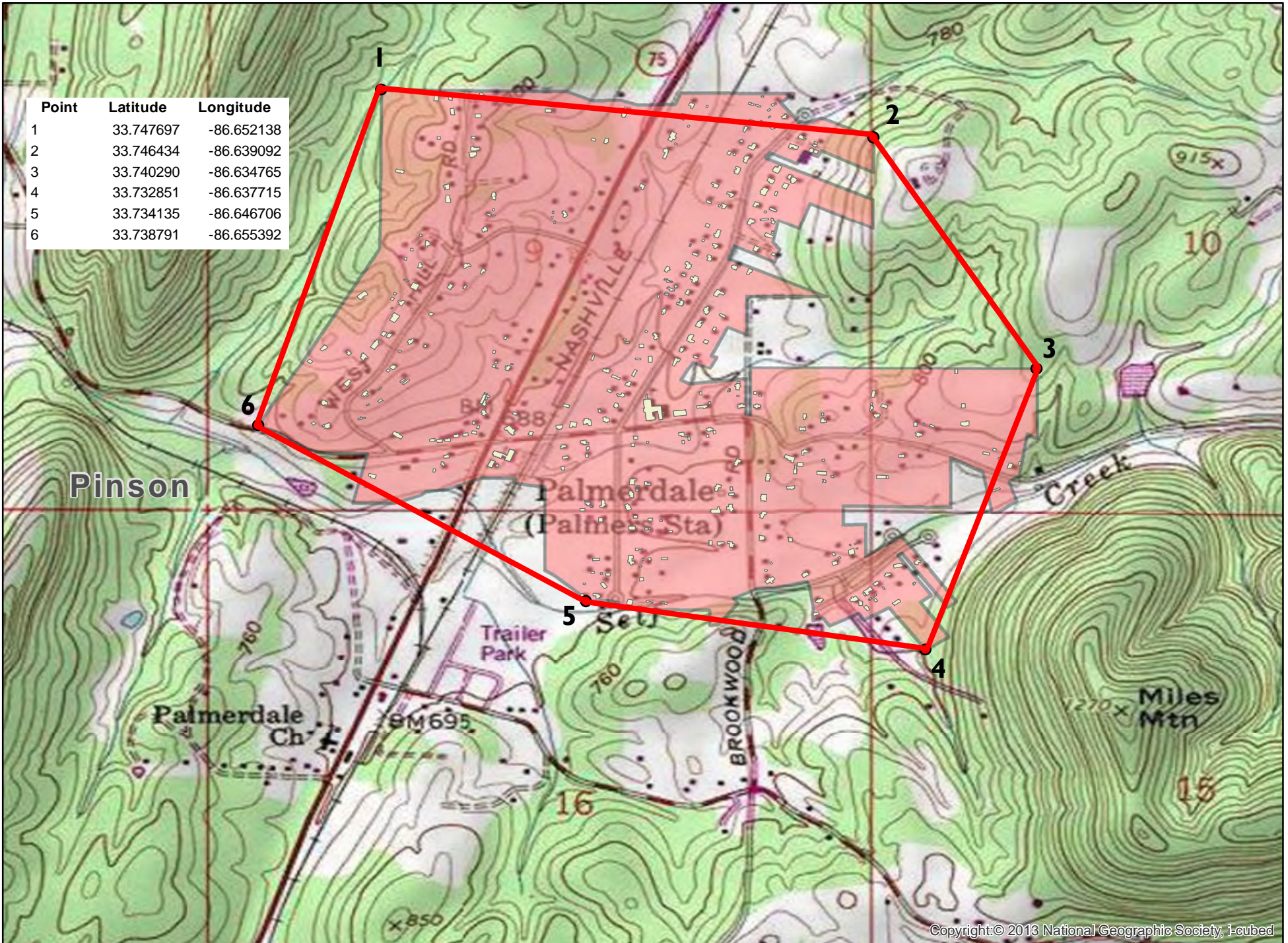


# Palmerdale Homesteads Historic District Photo Map



# Palmerdale Homesteads Historic District, Jefferson County, Alabama

Point	Latitude	Longitude
1	33.747697	-86.652138
2	33.746434	-86.639092
3	33.740290	-86.634765
4	33.732851	-86.637715
5	33.734135	-86.646706
6	33.738791	-86.655392















5270  
MILES - SPRING ROAD

3  
T

ADT





PALMERDALE  
HOMESTEADS  
COMMUNITY  
CENTER



























Leo Loggins  
206-308-3191  
FOR SALE  
KW  
KELLER WILLIAMS  
REALTY



CLASS  
OF  
1944



PALMERDALE HOMESTEADS COMMUNITY CENTER





8130



















G.T. WALKER  
CENTER

NO  
PARKING



U.S. POST OFFICE  
PALMERDALE AL 35123

Handicapped Parking  
VAN ACCESSIBLE





ENCOUNTER  
KIDS

ENCOUNTER





DEAD  
END

SPEED  
LIMIT  
25





8354







Midwood Rd

Hwy 75







SPEED  
LIMIT  
25

UNITED STATES DEPARTMENT OF THE INTERIOR  
NATIONAL PARK SERVICE

NATIONAL REGISTER OF HISTORIC PLACES  
EVALUATION/RETURN SHEET

Requested Action: Nomination

Property Name: Palmerdale Homesteads Historic District

Multiple Name:

State & County: ALABAMA, Jefferson

Date Received: 10/7/2019      Date of Pending List: 11/1/2019      Date of 16th Day: 11/18/2019      Date of 45th Day: 11/21/2019      Date of Weekly List:

Reference number: SG100004642

Nominator:

Reason For Review:

Accept       Return       Reject      11/21/2019 Date

Abstract/Summary NR Criteria A and C.  
Comments:

Recommendation/ Criteria AOS: Social History, Government, Community Planning & Development, and Architecture;  
LOS: state; POS: 1934-1970.

Reviewer Lisa Deline

Discipline Historian

Telephone (202)354-2239

Date 11/21/19

DOCUMENTATION: see attached comments : No      see attached SLR : No

If a nomination is returned to the nomination authority, the nomination is no longer under consideration by the National Park Service.



# ALABAMA HISTORICAL COMMISSION

468 South Perry Street  
P.O. Box 300900  
Montgomery, Alabama 36130-0900  
334-242-3184 / Fax: 334-240-3477

Lisa D. Jones  
Executive Director  
State Historic Preservation Officer

August 23, 2019

Daniel B. Delahaye  
Federal Preservation Officer  
U.S. Postal Service (USPS)  
475 L'Enfant Plaza SW  
Room 6670  
Washington, D.C. 20260-1862

**Re: Palmerdale Homesteads Historic District, Pinson, Jefferson County, Alabama  
Parts of Miles Springs Road, North and South Valley Roads, Brookwood Road,  
Southfield Road North and South**

Dear Mr. Delahaye:

I am pleased to inform you that the above-referenced district is being considered for listing in the National Register of Historic Places on September 26, 2019. The National Register is the official national list of historic properties worthy of preservation. Listing in the National Register is honorary, provides recognition, and assists in preserving our nation's heritage. Enclosed is a copy of the National Register nomination.

The Palmerdale Homestead U.S. Post Office (Resource #15) is being considered as a contributing resource in the district. We would appreciate your opinion on whether this property meets or does not meet National Register requirements. Please send your written comments to:

Alabama Historical Commission  
Attn: Lee Anne Wofford  
468 S. Perry Street  
Montgomery, Alabama 36130-0900

I appreciate your support of the National Register program in Alabama. If you have any questions, please contact Mr. Collier Neeley, National Register Coordinator at 334.230.2696 / Collier.Neeley@ahc.alabama.gov.

Sincerely,

A handwritten signature in black ink that reads "Lee Anne Wofford".

Lee Anne Wofford  
Deputy State Historic Preservation Officer

Enclosures



5320 Miles Spring Road, Pinson, AL 35126

September 2, 2019

TO WHOM IT MAY CONCERN:

People in our community have been working to preserve the history of our community for several years. We support the nomination of our community to the National Register of Historic places. The following is a short history of what we have been doing. Our motto for our group is "preserving history, serving our community".

For several years a dedicated group of friends and neighbors have worked hard to preserve the Palmerdale Homesteads Community Center. When it was built, the Community Center was a state-of-the-art elementary school and along with the two churches, the center of community life.

In the Spring of 2002, the Jefferson County Board of Education voted to close the Palmerdale Elementary School and allowed the building to remain vacant with no plans to reopen the school. With an abandoned and deteriorating building inviting vandalism, a group of concerned citizens requested permission to use the facility as a community center. In September 2003, an agreement with the Jefferson County Board of Education was reached and Palmerdale Homesteads Community Center, Inc. was born. The non-profit PHCC took control of and held responsibility for the renovation, maintenance, and operation of the building and grounds located in the heart of the Palmerdale community.

PHCC signed a fifteen-year lease with Jefferson County Board of Education hoping to prevent what has happened to other vacated school properties. But our dynamic, family-oriented center, is on the move.

Soon the building and grounds were spruced up, cleaned up. Improvements were made and we were on the way to becoming a gathering place for families.

Many events are held throughout each year. Without everyone coming together and planning events and promoting community-wide events the Center would have died. We certainly do not want that. So, let's all get involved.

We hold events such as Arts and Craft events, Dinner Theatre, Fish Fry, Fall Festival, Fourth of July Blow-Out, Movie Night, Family Reunions, a weekly Quilting Bee, Yard Sales, Kids Consignment Sale, Concerts and on and on. We not only hold these events to raise money in order to maintain and upkeep the building, but most of all, to promote a community spirit in our neighborhood. We all need each other and want everyone in our community to feel like they are special and part of Palmerdale.

The City of Pinson came to us with the idea of allowing them to help with the Center. In the Spring of 2010, the City of Pinson signed a 99-year lease with the Jefferson County Board of Education. However, the board and members of PHCC still run the day-to-day operation of the building and still promote events and rentals in the building.

Barry A. Wilson  
Palmerdale Homesteads Community Center  
President



# JEFFERSON COUNTY COMMISSION



**T. JOE KNIGHT**

COMMISSIONER DISTRICT IV  
Suite 220  
716 Richard Arrington, Jr. Blvd. N  
Birmingham, Alabama 35203  
Telephone (205) 325-5070  
FAX (205) 325-4881

August 30, 2019

Ms. Lee Anne Wofford  
Deputy State Historic Preservation Officer  
Alabama Historical Commission  
P.O. Box 300900  
Montgomery, AL 36130-0900



Re: Palmerdale Homesteads Historic District  
Pinson, Alabama, Jefferson County, Alabama  
Parts of Miles Spring Road, North and South Valley Roads  
Brookwood Road, Southfield Road North and South

Dear Ms. Wofford:

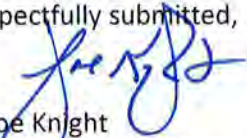
I write in support of the above areas to be included in the National Register of Historic Places. As I understand the Alabama National register Review Board will meet on September 26, 2019, to consider this partition.

We often deem areas of our county and state as being less important than they may have been many years ago. By doing this, a community may become forgotten in our annals of history. This community has been preserved over the years as evidenced by the excellent research that accompanied your package and I would be remiss if I did not advocate for this area to be included in the National Register of Historic Places.

This area sprang up as a result of the post-depression New Deal Resettlement Administration that give new life to areas such as Palmerdale, Alabama after the depression. The project here was indeed a success and over time as interstates grew and bypass roads became prevalent, this community kept its charm, kept its character and in many instances preserved that which we can never re-create. It was a time when neighbors helped one another, communities rallied where the need arose and a time when children learned the true meaning of being part of a family and a community.

Again, I am enthusiastic about the opportunity to write in support of this measure and it is with great hope that the Board will nominate this community to be placed on the National Register of Historic places.

Respectfully submitted,

  
T. Joe Knight  
Commissioner, District Four

TJK/vld



ALABAMA STATE SENATE  
ALABAMA STATE HOUSE

11 SOUTH UNION STREET, 7TH FLOOR  
MONTGOMERY, ALABAMA 36130-4600

**SHAY SHELNUTT**

State Senate District 17  
Telephone: (334) 261.0794  
Email: shay.sd17@gmail.com

**COMMITTEES:**

Banking & Insurance, Chairman  
Governmental Affairs  
Education Policy  
Fiscal Responsibility & Economic Development  
Children, Youth & Human Services

September 12, 2019

National Registry Review Board  
Alabama Historical Commission  
Attention: Lee Anne Wofford  
468 South Perry Street  
Montgomery, Alabama 36130-0900

**RE: Palmerdale Homesteads Historic District, Pinson, Jefferson County, Alabama. Parts of Miles Springs Road, North and South Valley Roads, Brookwood Road, Southfield Road North and South.**

Review Board Members:

I believe that the aforementioned proposed Palmerdale Homesteads Historic District meets the requirements of the National Registry of Historic Places as established by Section A and Section C.

I strongly support the inclusion of the district into the rolls of the National Registry.

Respectfully,

A handwritten signature in black ink, appearing to read "Shay Shelnett", written over a horizontal line.

Shay Shelnett  
State Senator  
Alabama Senate District 17  
Trussville, Alabama



# ALABAMA HISTORICAL COMMISSION

468 South Perry Street  
P.O. Box 300900  
Montgomery, Alabama 36130-0900  
334-242-3184 / Fax: 334-240-3477



Lisa D. Jones  
Executive Director  
State Historic Preservation Officer

October 4, 2019

Ms. Joy Beasley  
National Park Service  
1849 C Street NW  
Mail Stop 7228  
Washington, DC 20240

Dear Ms. Beasley:

Enclosed please find the nomination and supporting documentation to be considered for listing of the following Alabama resource in the National Register of Historic Places:

Palmerdale Homesteads Historic District  
Pinson, Jefferson County, Alabama

Your consideration of the enclosed National Register of Historic Places nomination is appreciated.

Sincerely,

Lee Anne Wofford  
Deputy State Historic Preservation Officer

LAW/nw

Enclosures