

United States Department of the Interior  
National Park Service

RECEIVED

NOV 1 1988

National Register of Historic Places  
Registration Form

NATIONAL  
REGISTER

This form is for use in nominating or requesting determinations of eligibility for individual properties or districts. See instructions in *Guidelines for Completing National Register Forms* (National Register Bulletin 16). Complete each item by marking "x" in the appropriate box or by entering the requested information. If an item does not apply to the property being documented, enter "N/A" for "not applicable." For functions, styles, materials, and areas of significance, enter only the categories and subcategories listed in the instructions. For additional space use continuation sheets (Form 10-900a). Type all entries.

1. Name of Property

historic name North Main Street Historic District  
other names/site number North Main Street Historic District

2. Location

street & number North Main Street na not for publication  
city, town Madisonville na vicinity  
state Kentucky code KY county Hopkins code 107 zip code 42431

3. Classification

Ownership of Property	Category of Property	Number of Resources within Property	
<input checked="" type="checkbox"/> private	<input type="checkbox"/> building(s)	Contributing	Noncontributing
<input type="checkbox"/> public-local	<input checked="" type="checkbox"/> district	<u>16</u>	<u>7</u> buildings
<input type="checkbox"/> public-State	<input type="checkbox"/> site	<u>0</u>	<u>0</u> sites
<input type="checkbox"/> public-Federal	<input type="checkbox"/> structure	<u>2</u>	<u>0</u> structures
	<input type="checkbox"/> object	<u>0</u>	<u>0</u> objects
		<u>18</u>	<u>7</u> Total

Name of related multiple property listing: Hopkins County Multiple Properties Listing  
Number of contributing resources previously listed in the National Register 0

4. State/Federal Agency Certification

As the designated authority under the National Historic Preservation Act of 1966, as amended, I hereby certify that this  nomination  request for determination of eligibility meets the documentation standards for registering properties in the National Register of Historic Places and meets the procedural and professional requirements set forth in 36 CFR Part 60. In my opinion, the property  meets  does not meet the National Register criteria.  See continuation sheet.

David L. Morgan  
Signature of certifying official David L. Morgan Date 10-20-88  
State Historic Preservation Officer, Commonwealth of Kentucky  
State or Federal agency and bureau

In my opinion, the property  meets  does not meet the National Register criteria.  See continuation sheet.

NA  
Signature of commenting or other official Date  
NA  
State or Federal agency and bureau

5. National Park Service Certification

I, hereby, certify that this property is:

entered in the National Register.  
 See continuation sheet.

determined eligible for the National Register.  See continuation sheet.

determined not eligible for the National Register.

removed from the National Register.

other, (explain:)

Patrick Andrus 12/13/88  
Signature of the Keeper Date of Action

2713

**6. Function or Use**

Historic Functions (enter categories from instructions)

DOMESTIC, Single DwellingRELIGION, Religious Structure

Current Functions (enter categories from instructions)

DOMESTIC, Single Dwelling, Multiple DwellingCOMMERCE/TRADE, BusinessRELIGION, Religious Structure**7. Description**

Architectural Classification

(enter categories from instructions)

Bungalow/CraftsmanColonial RevivalGothicGreek Revival

Materials (enter categories from instructions)

foundation Brickwalls BrickWood, weatherboardroof Other: Composition shingles

other \_\_\_\_\_

Describe present and historic physical appearance.

The North Main Street Historic District is a significant collection of residential architecture from the late 19th and early 20th centuries in Madisonville, Kentucky. The district is located along a two block area of North Main Street on the edge of the downtown commercial area. While several houses have been converted into offices, the majority of structures in the district remain in use as residences. Within the district is a variety of designs such as Queen Anne, Colonial Revival and Craftsman. The district contains 19 contributing and 6 non-contributing buildings.

The North Main Historic District became a residential area during the early 19th century when several homes were built here just to the north of the commercial section of the city. Extensive construction on these two blocks began after 1870 when the city experienced rapid growth and construction. New Queen Anne residences were built in these years such as the house at 208 N. Main Street and 350 N. Main Street.

Residential construction continued into the 20th century with many new Craftsman and Colonial Revival designs erected by 1930. Large Craftsman homes with wide eaves and multi-light windows can be seen at 173 and 215 N. Main Street and several Colonial Revival designs were built at 307 and 317 N. Main Street. By 1930 most lots in these two blocks were occupied as single family dwellings. The street was lined with broad concrete sidewalks in the early 20th century and many large shade trees were planted along the street.

In recent years the residential character of the district has remained dominant, but some commercial encroachment has occurred. Two commercial buildings were erected in the 1950s in the district and the First Baptist Church was constructed ca. 1970. Despite these changes, the district's character remains primarily residential. Alterations to the existing residences have not been extensive and several residences have been restored or are under restoration at the present time.

**8. Statement of Significance**

Certifying official has considered the significance of this property in relation to other properties:

nationally  statewide  locally

Applicable National Register Criteria  A  B  C  D

Criteria Considerations (Exceptions)  A  B  C  D  E  F  G NA

Areas of Significance (enter categories from instructions)

Architecture  
\_\_\_\_\_  
\_\_\_\_\_  
\_\_\_\_\_  
\_\_\_\_\_  
\_\_\_\_\_

Period of Significance

ca. 1850 - ca. 1935  
\_\_\_\_\_  
\_\_\_\_\_

Significant Dates

ca. 1850 -  
ca. 1935  
\_\_\_\_\_

Cultural Affiliation

N/A  
\_\_\_\_\_  
\_\_\_\_\_

Significant Person

N/A  
\_\_\_\_\_

Architect/Builder

Unknown  
\_\_\_\_\_  
\_\_\_\_\_

State significance of property, and justify criteria, criteria considerations, and areas and periods of significance noted above.

The North Main Street Historic District is a notable collection of late 19th and early 20th century residential architecture in Madisonville, Kentucky. The district is eligible under criteria C as the most intact collection of historic residential architecture in Hopkins County. Within the district are fine examples of Queen Anne, Colonial Revival and Craftsman architecture. The North Main Street area was a preferred residential section of the city in the late 19th century for Madisonville's middle and upper class and it has remained primarily residential in character to the present.

After 1870, this section of North Main Street developed into one of the most preferred residential areas of the city. By 1900, the street was lined with many frame and brick residences. The most notable of these were built by the city's merchant class which built many large brick Queen Anne residences in the late 19th century. Some of the city's best examples of this style are found in these two blocks. These include the towered Queen Anne designs at 220 and 308 North Main. Both residences feature prominent conical towers on the main facade and decorative brick over the doors and windows.

From 1900 until 1930, the area continued to remain an important residential section of the city and numerous new brick and frame Craftsman, Colonial Revival and Bungalow designs replaced earlier homes. A fine Colonial Revival residence was built at 208 N. Main Street with large two-story columns on the main facade. Two similar Dutch Colonial designs were constructed ca. 1925 at 307 and 317 N. Main Street. The fine shingled design St. Mary's Episcopal Church was built in 1917 at 157 N. Main Street.

The original occupants of these residences represented both the middle and upper class spectrum of the city. These included J.D. McPherson, a Madisonville businessman who lived at 208 N. Main; Preston B. Ross, vice-president of the Kentucky Bank who lived at 308 N. Main; and Dr. Fred Strother, a physician who lived at 307 N. Main. Similar professional occupations are found throughout the district.

See continuation sheet

**9. Major Bibliographical References**

See continuation sheet

Previous documentation on file (NPS): NA

- preliminary determination of individual listing (36 CFR 67) has been requested
- previously listed in the National Register
- previously determined eligible by the National Register
- designated a National Historic Landmark
- recorded by Historic American Buildings Survey # \_\_\_\_\_
- recorded by Historic American Engineering Record # \_\_\_\_\_

Primary location of additional data:

- State historic preservation office
- Other State agency
- Federal agency
- Local government
- University
- Other

Specify repository: \_\_\_\_\_

**10. Geographical Data**

Acreage of property 13 acres

UTM References

A	1 6	4 5 5 9 1 0	4 1 3 1 8 9 0
	Zone	Easting	Northing
C	1 6	4 5 5 8 1 0	4 1 3 1 4 6 0

B	1 6	4 5 6 0 0 0	4 1 3 1 8 4 0
	Zone	Easting	Northing
D	1 6	4 5 5 9 6 0	4 1 3 1 5 4 0

See continuation sheet

Verbal Boundary Description

See continuation sheet

Boundary Justification

See continuation sheet

**11. Form Prepared By**

name/title Philip Thomason  
organization Thomason and Assoc. date 7/28/88  
street & number P.O. Box 121225 telephone 615-383-0227  
city or town Nashville state TN zip code 37212

United States Department of the Interior  
National Park Service

# National Register of Historic Places Continuation Sheet

Section number 7 Page 1

Hopkins County Multiple Properties Listing

## North Main Street Historic District - Individual Property Descriptions:

1. 155 N. Main St.: Two-story, frame, Four Square, Neo-Classical Revival style residence. On the main (east) facade is a two-story porch with Ionic columns. The windows are 12/1 sash. The porch balustrade has square balusters. The roof is hip and covered in composition shingles. On the north and south facades are projecting, canted, two-story bays. The house is covered with weatherboard. (C)
2. St. Mary's Episcopal Church, 157 N. Main St.: One-story, Bungalow style, frame church built in 1917. The church is covered with shingles and has a gable roof with exposed eave rafters and covered with composition shingles. The projecting entrance vestibule was added to the main (east) facade ca.1950. It has a gable roof with exposed eave rafters, is covered with wood shingles, and has a fixed stained glass window. The gable front of the main facade contains a fixed circular stained glass window, exposed purlins, and king-post and tie-beam decoration. The windows are four-pointed arched, fixed stained glass. To the rear of the building is a ca.1970 frame addition covered in wood shingles. The interior is relatively unaltered. (C)
3. 173 N. Main St.: Two-story, brick Bungalow duplex with a gable front on main (east) facade. The gable field contains half-timbering. The porch on the main facade is supported by brick piers. The windows are 3/1 vertical sash. The main entrances are the original frame and three-light doors with three-light transoms. In the gable field are four diamond-shaped paned windows with a built-in flower box and decorative brackets. The exposed eaves have eave rafters and knee-brace brackets. (C)
4. 183 N. Main St.: Two-story, ca.1970 brick residence with rear garage and ca.1900 cast iron fence at the front walk. The cast iron fence is a contributing structure. (NC), (C)
5. 207 N. Main St.: Two-story brick, ca.1850, central passage plan I-House with a rear ell covered with stucco. On the main (east) facade is a one-story ca. 1920 porch with paired square columns. The main entrance is the original four-panel door with four-light sidelights, single lights over the sidelights, and a single-light transom. On the second story is a matching door and a balcony with square balusters and a small gable over the door with knee-brace brackets. The windows are both original and replacement 6/6 sash. At the roofline is an unusual acorn design molding. The original ell of the house has been altered with a frame and stucco addition. At the rear of this addition is another frame addition. The interior staircase and mantles appear to be antebellum, and around the doors are unusual Greek Revival or Colonial surrounds with dentil molding. (C)

**United States Department of the Interior  
National Park Service****National Register of Historic Places  
Continuation Sheet**Section number 7 Page 2

Hopkins County Multiple Properties Listing

6. 208 N. Main Street: Two-story brick, ca.1915 residence; on the main (west) facade is a two-story portico with four Corinthian columns. An added one-story porch is located over the main entrance with Corinthian columns, and a stone balustrade and spiral staircase. The main entrance has an original glass and frame single-light door and leaded glass sidelights. Over the door and sidelights are leaded glass transoms. On the second story is a single-light door and sidelights. Windows are 1/1 sash with stone sills and soldiercourse lintels. Windows on the second story are 8/1 sash. On the south facade the porch has been enclosed. At the rear are one-story brick wings added ca.1960. In the gable field of the side facades are Palladian attic windows. On the north facade is a one-story bay window. At the roofline of the main facade is a gable dormer. At rear is ca.1980 non-contributing garage. (C), (NC)

7. 215 N. Main Street: One and 1/2-story brick bungalow built ca.1925. The main entrance has a frame and multi-light door and sidelights. The windows are 6/1 sash. The eaves are exposed and have decorative brackets. The roof is gable. (C)

8. 220 North Main Street: Two-story brick, ca. 1900 Queen Anne residence. On the main (west) and south facades is a one-story porch with Corinthian columns and a railing of turned balusters. The main entrance has an original frame and glass single-light door with rusticated lintels. The windows are 1/1 sash with stone sills and rusticated stone lintels. On the second story is a small balcony with Corinthian columns. The door leading to the balcony is single-light frame and glass. At the southwest corner is a round turret with a conical roof. The tower has single-light windows with rusticated stone lintels and stone sills. In the gable field of the main facade is an elliptical attic window with rusticated stone arching and keystone. In the porch gable field is floral decoration. At the rear are frame additions. (C)

9. 223 N. Main St.: One-story brick bungalow built ca. 1925. The porch on the main (east) facade is supported by brick piers and is enclosed with screen. The entry onto the brick porch is arched. The main entrance was altered with ca.1965 door. The windows are 6/6 sash. The eaves are exposed to reveal the eave rafters. The front porch is supported by brick piers enclosed with screen. The roof is hipped. (C)

10. 231 N. Main St.: One-story brick bungalow built ca.1925. The main entrance has a multi-light frame and glass door with multi-light sidelights. The windows are 6/1 sash. The eaves are exposed and decorated with ornamental brackets. The roof is pyramidal. (C)

11. First Baptist Church, 242 N. Main St.: Two-story , brick, ca.1970 Colonial Revival style church. (NC)

**United States Department of the Interior  
National Park Service****National Register of Historic Places  
Continuation Sheet**Section number 7 Page 3

HopkinsCounty Multiple Properties Listing

12. 249 N. Main St.: American Printing Company; two-story, International Style commercial ca.1940 building that has been altered ca.1970 with one-story concrete block additions. (NC)

13. 257 N. Main St.: Ken Gibson Realtors; one-story, ca. 1950 commercial building that has been altered. (NC)

14. 307 N. Main St.: Two-story brick and stucco Dutch Colonial residence built by Dr. Strother in 1925. The roof is gambrel. The main entrance has an eight-panel door, eight-light sidelights, and a blind elliptical transom. An elliptical porch is supported by Doric columns. The windows are arched, 14/14 sash on the first floor and 6/6 sash on the second floor. (C)

15. 308 North Main Street: Two-story brick, ca. 1890, Queen Anne residence. On the main (west) and south facades is a one-story porch with fluted Doric columns. The main entrance has an original single-light glass and frame door with a single-light arched transom. Windows are arched 1/1 sash. On the main facade is a two-story projecting bay with rectangular stained glass upper sash. The windows have brick relief arching. In the gable field are fishscale shingles and an elliptical vent window. Beneath the gables are vergeboard brackets. At the rear is a two-story frame addition. (C)

16. 317 N. Main St.: Two-story brick, Dutch Colonial residence with flared gambrel roof built ca.1930. The porch on the main (east) facade has a gable roof and square Doric columns. The main entrance has four-light sidelights and blind, elliptical transom. The windows are 6/6 sash. The house is metal sided, and the roof is covered in composition shingles. (C)

17. 320 North Main Street: Two-story frame, ca. 1890, Queen Anne residence. On the main (west) facade is a one-story porch with chamfered posts and vergeboard brackets. The porch has eave brackets. The main entrance has a single-light glass and frame door and a single-light transom. The windows are 1/1 sash. On the second story are hexagonal wood shingles in the gables. Over the second story windows is a pediment with star-shaped and floral cut-out patterns. On the south facade is a small jerkinhead gable supported by a large fan bracket. On the north facade is a large one-story sunroom with multi-light windows and frame lower panels. Above the windows are frame rectangular panels. In the north bay is a decorative window similar to that on the main facade. At the rear is an added one-story porch. The main facade has a gable dormer with 1/1 sash windows and fishscale shingles. (C)

18. 329 N. Main St.: One-story brick, ca.1940 residence now used as a commercial building. (NC)

**United States Department of the Interior  
National Park Service****National Register of Historic Places  
Continuation Sheet**Section number 7 Page 4

Hopkins County Multiple Properties Listing

19. 334 North Main Street: Two-story brick ca. 1890 residence. On the main (west) facade is a one-story porch with Doric/Tuscan columns added ca.1910. The main entrance has an original glass and frame single-light door with six-light sidelights and a leaded glass transom. The windows on the first story are 1/1 sash with stone hood molding and stone sills. Dividing the first and second stories is a brick beltcourse. Windows on the second story are 1/1 sash with brick relief arching and stone shoulders. The house is five-course common bond. The gables have large Italianate brackets and eave vergeboard. In the gable field on the main facade is a two-light arched attic window. On the rear facades are elliptical single-light attic windows. The south facade has an original glass and frame four panel door. The chimney on the north facade has extensive brick corbelling. At the rear are two ca.1910 frame additions. The roof is the original multi-color slate. The interior has original detailing with cast iron mantles. The house is under renovation. (C)

20. 341 N. Main St.: One-story brick ca.1900 residence. The exterior has been altered. (NC)

21. 281, 350 North Main Street: One-and-one-half-story brick, ca.1895 residence. On the main (west) facade is a one-story porch with tapered frame posts and square balusters. The main entrance has an original frame and glass single-light door with twelve-light sidelights and a six-light transom. The projecting bay of the main facade has a large horseshoe window with 1/1 sash window surrounded by stained glass lights and rusticated stone arch. The window rests on a large stone sill. Above the window is a rectangular stained glass window with a rusticated stone lintels. At each facade are gable dormers with twenty-light fixed windows which were possibly added. At the rear is a ca.1950 one-story porch. The interior has original detailing. (C)

22. 353 North Main Street: A Two-story brick, ca.1890 Queen Anne residence. On the main (east) facade is an original two-story frame porch with square columns and vergeboard. The main entrance has its original frame and glass double doors over which is a two-light transom. The projecting bay on the north side of the main facade has a large horseshoe window composed of a fixed middle pane flanked by two 1/1 sash windows above which is an arched transom. The arch springs from a soldier-course, and the windows have a headercourse sill. The chimney sits at the north corner of the projecting bay and is corbelled. Above the horseshoe arch are two 1/1 sash windows with shallow arched corbelled brick molding. Within the gable field on the main facade are fishscale shingles and vergeboard. On the north facade is a two-story frame porch. All windows have arched, corbelled brick molding and stone lintels. All facades are stretcher course. At the rear is a ca.1915 frame, vertical board addition with original frame and glass door. The south facade has a corbelled brick chimney. Across the front yard is a contributing cast iron fence the maker of which is unknown. (C),(C)



**United States Department of the Interior  
National Park Service**

**National Register of Historic Places  
Continuation Sheet**

Section number   8   Page   1  

Hopkins County Multiple Properties Listing

---

Since 1935, only a few structures have been built in the district. The most notable has been the First Baptist Church constructed at 242 N. Main Street. This large brick church is the major intrusion in the district. Modern commercial structures have also been built at 249 and 257 N. Main Street. Despite these additions, the district retains the most intact concentration of historic residential architecture in Madisonville.

**United States Department of the Interior  
National Park Service**

**National Register of Historic Places  
Continuation Sheet**

Section number 10 Page 1 Hopkins County Multiple Properties Listing


---

Verbal Boundary Description: The boundary of the North Main Street Historic District is illustrated on accompanying Hopkins County tax map 32. Included are lots 9-13, block 5; lots 7-17, block 6; lots 1, 9-12, block 12; and lots 1-3, block 13.

Verbal Boundary Justification: The boundary is drawn to include all significant properties in this two-block section of North Main Street and to exclude modern commercial buildings and residences adjacent to the district.

North Main Street  
Historic District

Scale: 1"=200'

 - Non-contributing buildings



Seaboard System  
Railroad

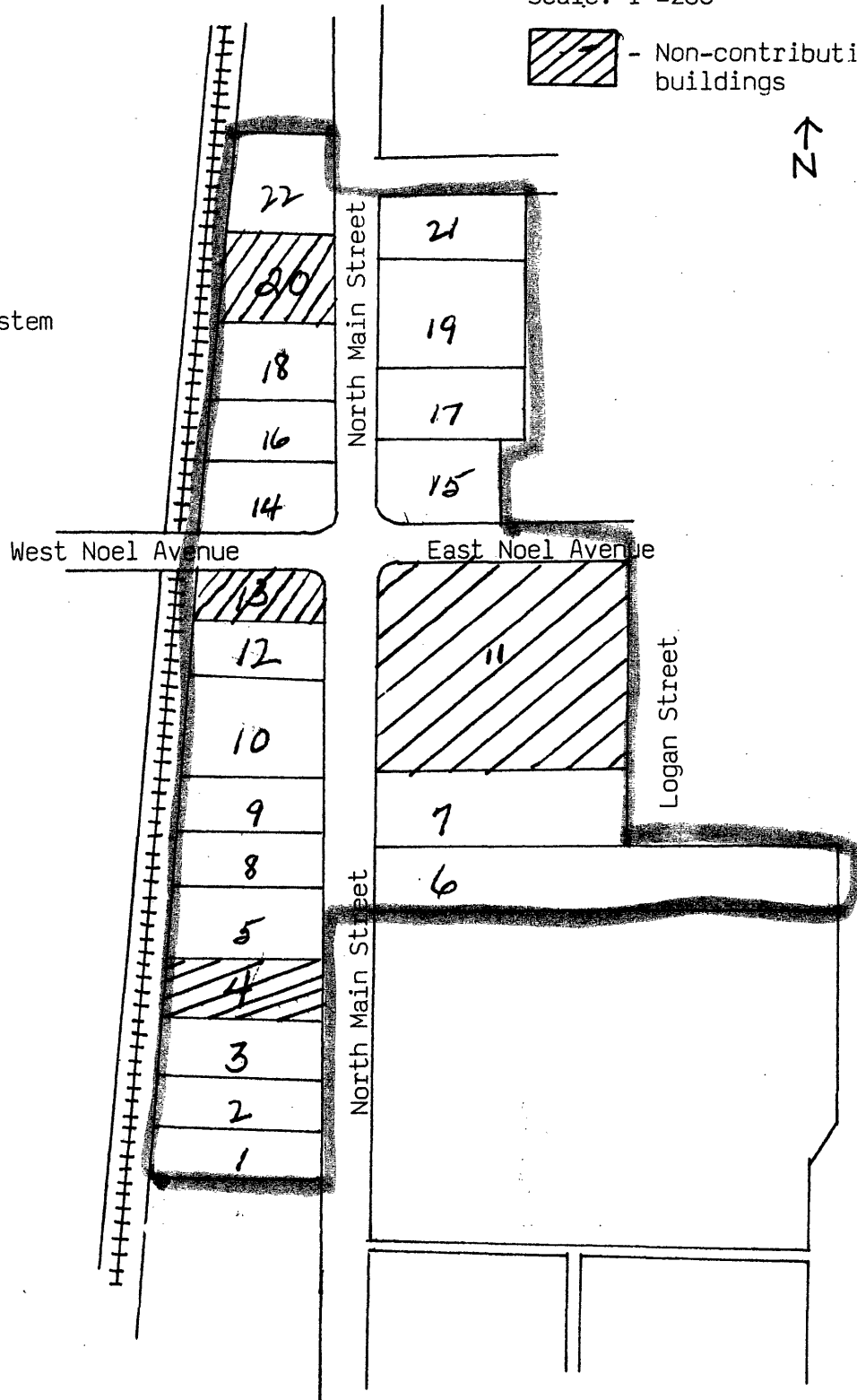



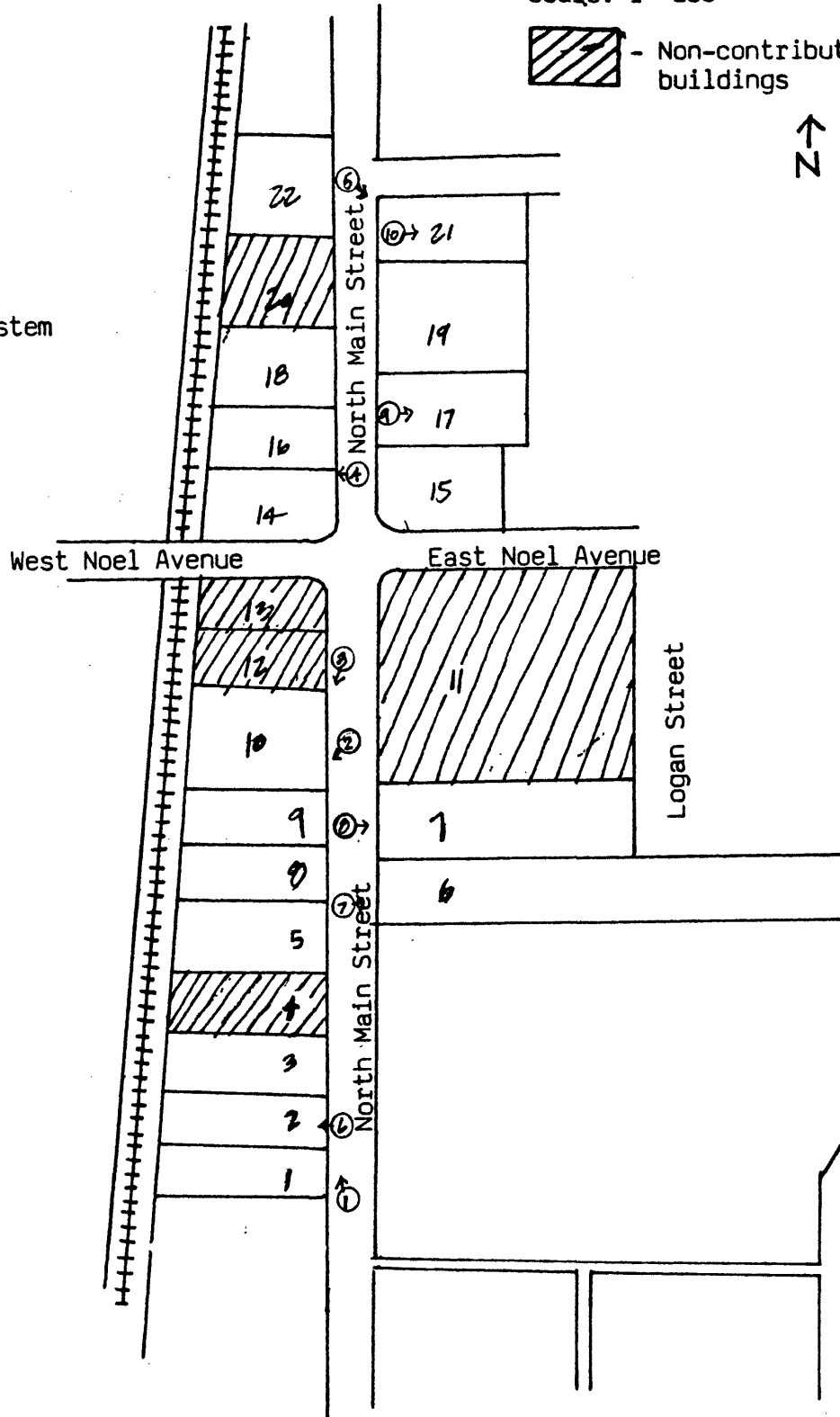
PHOTO KEY  
North Main Street  
Historic District

Scale: 1"=200'

 - Non-contributing buildings



Seaboard System  
Railroad





North Main Street  
Historic District,  
N. Main St., Madisonville, KY  
Scale: 1"=200'



United States Department of the Interior  
National Park Service

National Register of Historic Places  
Continuation Sheet

Section number \_\_\_\_\_ Page \_\_\_\_\_

SUPPLEMENTARY LISTING RECORD

NRIS Reference Number: 88002713

Date Listed: 12/13/88

North Main Street Historic District  
Property Name

Hopkins  
County

KY  
State

Hopkins County MPS  
Multiple Name

-----  
This property is listed in the National Register of Historic Places in accordance with the attached nomination documentation subject to the following exceptions, exclusions, or amendments, notwithstanding the National Park Service certification included in the nomination documentation.

for Patrick Andrews  
Signature of the Keeper

12/13/88  
Date of Action

=====  
Amended Items in Nomination:

There is an inconsistency in the resource count between Section 3 of the nomination form and the text. Marty Perry with the KY SHPO has verified that the count in Section 3 is correct - 16 contributing buildings, 2 contributing structures, and seven non-contributing buildings. The form is now officially amended to reflect the correct count.

DISTRIBUTION:

- National Register property file
- Nominating Authority (without nomination attachment)

**United States Department of the Interior  
National Park Service**

**National Register of Historic Places  
Continuation Sheet**

Section number Photo Key Page 1

Hopkins County Multiple Properties Listing

---

**Photo Key - Madisonville North Main Street Historic District**

1. North Main Street Historic District  
Location: North Main Street, Madisonville, KY.  
Photos: Thomason and Associates  
Neg: KY Heritage Council  
Date: February 1988  
View: 100-200 Block of N. Main St., west side  
Photo #: 1 of 10
2. View: 215,223, and 231 N. Main St., west side.  
Photo #: 2 of 10
3. View: 200 Block of N. Main St., west side.  
Photo #: 3 of 10
4. View: 307 and 317 N. Main St., west side.  
Photo #: 4 of 10
5. View: 300 Block of N. Main St., east side.  
Photo #: 5 of 10
6. View: 173 N. Main St., west side.  
Photo #: 6 of 10
7. View: 208 N. Main St., east side.  
Photo #: 7 of 10
8. View: 220 N. Main St., east side.  
Photo #: 8 of 10
9. View: 320 N. Main St., east side  
Photo #: 9 of 10
10. View: 350 N. Main St., east side.  
Photo #: 10 of 10