



Missouri Valley Grocery Company building (#2),
101 E. Main St. (looking SE at NW facade)
Mandan Commercial District, N.D.

Norene Roberts -- for Historical Research, Inc. 7/1983
Filed: State Historical Society of North Dakota

Roll 7 Frame 6

Photo 1



NE corner of First Street NW and
First Avenue NW; at corner is Kennelly
Building (#34) and left is Speilman,
Kelsch, and Wirtz Building. (#32)

Photo credit: Jacqueline Sluss for HRI

Photo Date: August, 1983

Location of negative: State Historical Society of North Dakota
North Dakota Heritage Center
Bismarck, ND 58505

Roll 10 Frame 20

Photo 2 of 24



400 Block of W. Main, showing SW facades from Vinton
Block (foreground) to Lewis and Clark Hotel (background)
Mandan Commercial District, Mandan, North Dakota 58554

J. Sluss for HRI 8/ 1983

Filed: State Historical Society of North Dakota

Roll 9 Frame 2

Photo 3



300 Block of W. Main St. showing SW facades (All Bldg.
in foreground) north side of street

Mandan Commercial District, Mandan, N.D. 58554

J. Sluss for Historical Research, Inc. 8/1983
Filed: State Historical Society of North Dakota

Roll

9

Frame

4

Photo 4



Looking NW; NW corner of West Main and
First Avenue NW; #17 at corner; #18a and b
at left.

Photo credit: Jacqueline Sluss for HRI

Photo Date: August, 1983

Location of negative: State Historical Society of North Dakota
North Dakota Heritage Center
Bismarck, ND 58505

Roll 9 Frame 5

Photo 5 of 24



North side of Main St. ^{west} in 100 block looking north
(State Bank of Morton Co., left, to First National Bank)
Mandan Commercial District, N.D.

j. Sluss, for Historical Research, Inc. 8/1983
Filed: State Historical Society of North Dakota

Roll 9 Frame 6

Photo 6



North side of Main Street E., 100 Block looking NW
Mandan Commercial District, N.D.

J. Sluss, for Historical Research, Inc. 8/1983
Filed: State Historical Society of North Dakota

Roll 9 Frame 8

Photo 7



N. P. Depot (left) and Cafe (right) in NP Park, south
side of Main St. W. looking SE
Mandan Commercial District, N. D.

Jacqueline Sluss for Historical Research, Inc. 8/1983
Filed: State Historical Society of North Dakota

Roll 9 Frame 16

Photo 8



South side of Main St. W. looking SW at (right) #6⁵,
N. P. Freight house and (left) #s 58 and 59, metal
maintenance buildings, across the NP Park.

Mandan Commercial District, N.D.

Jacqueline Sluss, for Historical Research, Inc. 8/1983
Filed: State Historical Society of North Dakota

Roll 9 Frame 17

Photo 9



Hughes Apartments (#35), looking
West at NW facade at corner of
First Street and First Avenue NW.

Photo credit: Jacqueline Sluss for HRI

Photo Date: August, 1983

Location of negative: State Historical Society of North Dakota
North Dakota Heritage Center
Bismarck, ND 58505

Roll 11 Frame 2a

Photo 10 of 24



West side of Collins Ave. between J.st. St. and Main N.W.
Commercial District of Mandan, N.D.

Jacqueline Sluss for Historical Research, Inc. 8/1983
Filed: State Historical Society of North Dakota

Roll 11 Frame 3a

Photo 11



Mandan Police and Fire Station (#30), 108-10 Collins Ave.
Commercial District of Mandan, N.D.

Jacqueline Sluss, for Historical Research, Inc. 8/1983
Filed: State Historical Society of North Dakota

Roll 8 Frame 8a

Photo 12



Intersection of First St. N.W. (left) and Second Ave.
N.W. with (#36) Engleter Building in center looking
southeast at south side of First St. and east side of
Second Ave. N.W.

Commercial District of Mandan, N.D.

Jacqueline Sluss for Historical Research, Inc.

8/1983

Filed: State Historical Society of North Dakota

Roll 10 Frame 2

Photo 13



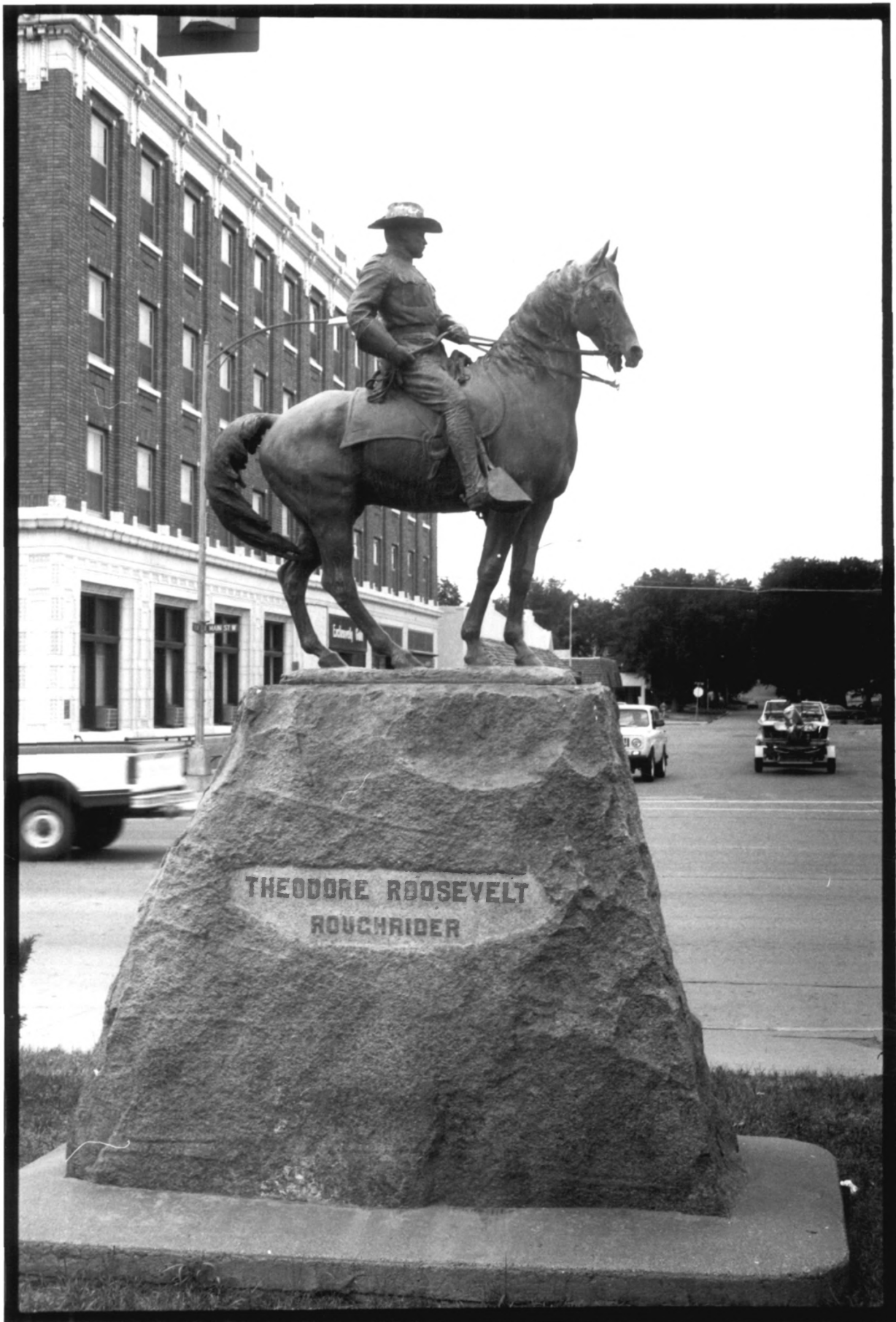
Mandan Federal Building (#29), 108 First St. N.W.
looking NE at SW facade (the white building in the
background (right) is out of the district boundaries.
Commercial District of Mandan, N.D.

Jacqueline Sluss for Hisotrical Research, Inc.
8/1983

Filed: State Historical Society of North Dakota

Roll 10 Frame 5

Photo 14



THEODORE ROOSEVELT
ROUGH RIDER

Teddy Roosevelt Statue (#6)

Photo credit: Jacqueline Sluss for HRI

Photo Date: August, 1983

Location of negative: State Historical Society of North Dakota
North Dakota Heritage Center
Bismarck, ND 58505

Roll 5 Frame 15

Photo 15 of 24



216-218 West Main (#19a and b)
South facade.

Photo credit: Jacqueline Sluss for HRI

Photo Date: August, 1983

Location of negative: State Historical Society of North Dakota
North Dakota Heritage Center
Bismarck, ND 58505

Roll 2 Frame 6

Photo 16 of 24



104 Second Avenue NW (#20a)
front facade faces West.

Photo credit: Jacqueline Sluss for HRI

Photo Date: August, 1983

Location of negative: State Historical Society of North Dakota
North Dakota Heritage Center
Bismarck, ND 58505

Roll 6 Frame 11

Photo 17 of 24



103 East Main (#38)
North and West facades.

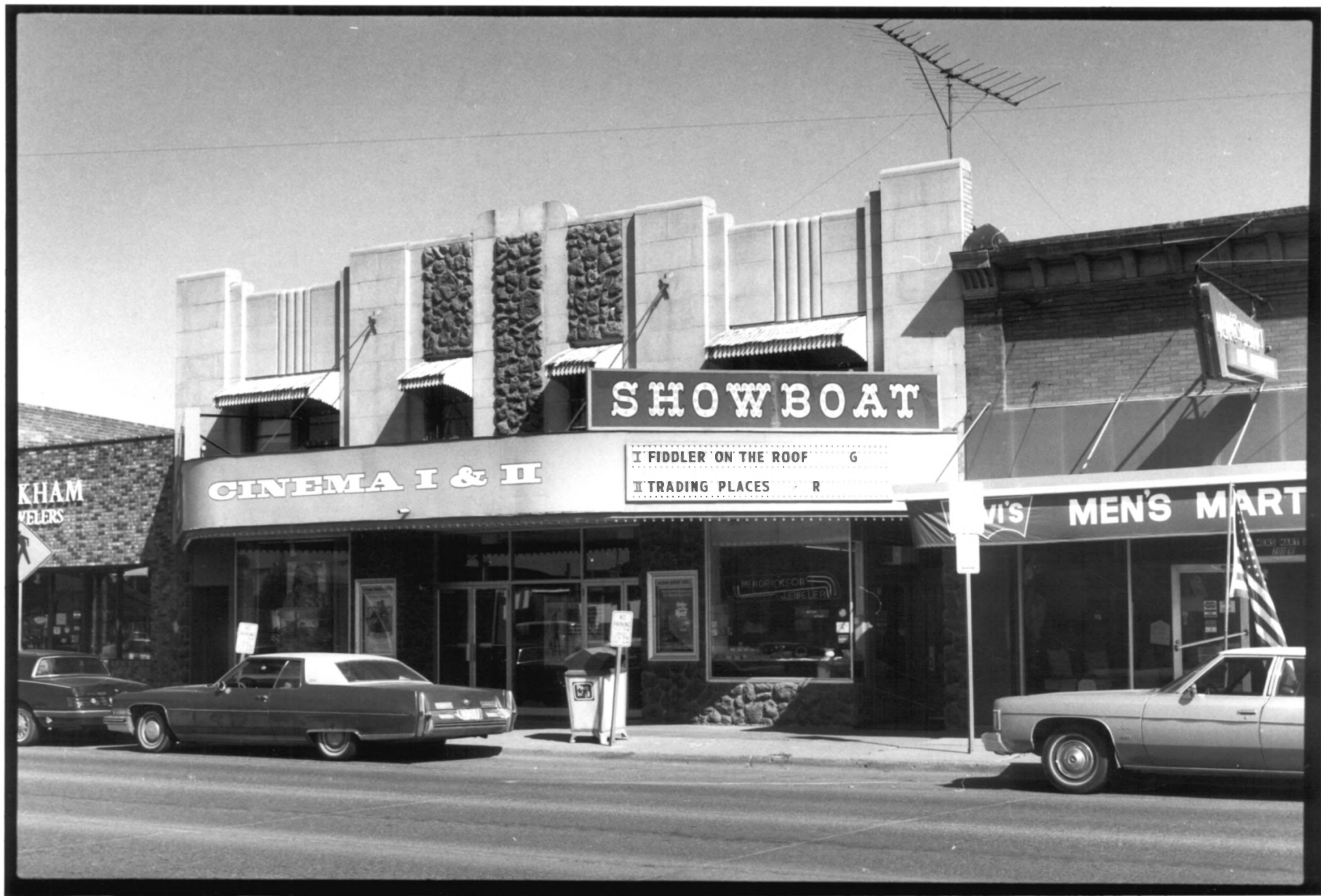
Photo credit: Jacqueline Sluss for HRI

Photo Date: August, 1983

Location of negative: State Historical Society of North Dakota
North Dakota Heritage Center
Bismarck, ND 58505

Roll 7 Frame 6

Photo 18 of 24



KHAM
JEWELERS

CINEMA I & II

SHOWBOAT

I FIDDLER ON THE ROOF G

II TRADING PLACES R

vi's MEN'S MART

210-12 West Main (#47)
South facade.

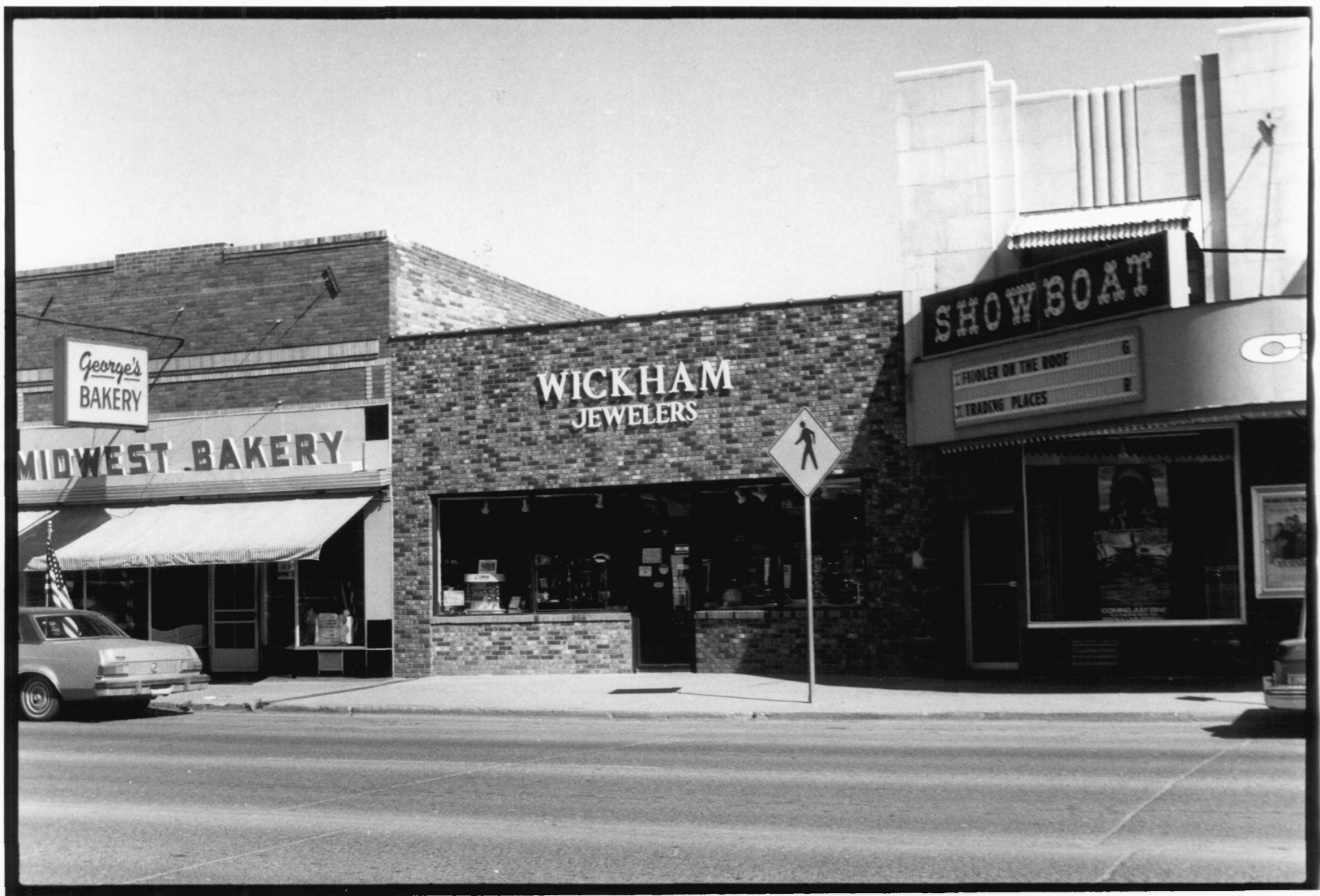
Photo credit: Jacqueline Sluss for HRI

Photo Date: August, 1983

Location of negative: State Historical Society of North Dakota
North Dakota Heritage Center
Bismarck, ND 58505

Roll 2 Frame 3a

Photo 19 of 24



George's
BAKERY

MIDWEST BAKERY

WICKHAM
JEWELERS

SHOWBOAT

FIDDLER ON THE ROOF

TRADING PLACES

6

8

214 West Main (#48)
South facade.

Photo credit: Jacqueline Sluss for HRI

Photo Date: August, 1983

Location of negative: State Historical Society of North Dakota
North Dakota Heritage Center
Bismarck, ND 58505

Roll 2 Frame 5

Photo 20 of 24



107 1/2 First Avenue NW (#53)

Photo credit: Jacqueline Sluss for HRI

Photo Date: August, 1983

Location of negative: State Historical Society of North Dakota
North Dakota Heritage Center
Bismarck, ND 58505

Roll 4 Frame 19

Photo 21 of 24



106 Second Avenue NW (#55)
front facade faces West.

Photo credit: Jacqueline Sluss for HRI

Photo Date: August, 1983

Location of negative: State Historical Society of North Dakota
North Dakota Heritage Center
Bismarck, ND 58505

Roll 6 Frame 10

Photo 22 of 24



106 Second Avenue NW (#55)
front facade faces West.

Photo credit: Jacqueline Sluss for HRI

Photo Date: August, 1983

Location of negative: State Historical Society of North Dakota
North Dakota Heritage Center
Bismarck, ND 58505

Roll 6 Frame 9

Photo 23 of 24



220-222 West Main (#20b)
South facade.

Photo credit: Jacqueline Sluss for HRI

Photo Date: August, 1983

Location of negative: State Historical Society of North Dakota
North Dakota Heritage Center
Bismarck, ND 58505

Roll 2 Frame 7

Photo 24 of 24