

United States Department of the Interior
National Park Service

National Register of Historic Places Continuation Sheet

Name of Property

County and State

Section number _____ Page _____

Name of multiple property listing (if applicable)

SUPPLEMENTARY LISTING RECORD

NRIS Reference Number: 93000722

Date Listed: 8/12/1993

Property Name: Neosho Commercial Historic District

County: Newton

State: MO

-
This property is listed in the National Register of Historic Places in accordance with the attached nomination documentation subject to the following exceptions, exclusions, or amendments, notwithstanding the National Park Service certification included in the nomination documentation.



Signature of the Keeper

5-21-09
Date of Action

=====

Amended Items in Nomination:

The property at 101-103 E. Main Street was listed as non-contributing because the entire exterior was covered in non-historic fabric. Upon removal of the metal cladding from the upper floor, the original fabric was revealed to be intact, including original windows. Elements of the storefront- specifically the metal and glass display windows, structural glass and tile floor, may also fall within the period of significance for the district (1868-1943). Based upon its current condition, the building now contributes to the historic district.

The MO State Historic Preservation Office was notified of this amendment.

DISTRIBUTION:

- National Register property file
- Nominating Authority (without nomination attachment)

722

United States Department of the Interior
National Park Service

RECEIVED

JUN 28 1993

NATIONAL REGISTER OF HISTORIC PLACES
REGISTRATION FORM

NATIONAL
REGISTER

This form is for use in nominating or requesting determinations for individual properties and districts. See instructions in How to Complete the National Register of Historic Places Registration Form (National Register Bulletin 16A). Complete each item by marking "x" in the appropriate box or by entering the information requested. If any item does not apply to the property being documented, enter "N/A" for "not applicable." For functions, architectural classification, materials, and areas of significance, enter only categories and subcategories from the instructions. Place additional entries and narrative items on continuation sheets (NPS Form 10-900a). Use a typewriter, word processor, or computer, to complete all items.

1. Name of Property

historic name Neosho Commercial Historic District

other names/site number N/A

2. Location

street & number Along sections of Main, Spring, Washington and Wood Streets not for publication N/A

city or town Neosho vicinity N/A

state Missouri code MO county Newton code 145 zip code 64850

3. State/Federal Agency Certification

As the designated authority under the National Historic Preservation Act of 1986, as amended, I hereby certify that this X nomination request for determination of eligibility meets the documentation standards for registering properties in the National Register of Historic Places and meets the procedural and professional requirements set forth in 36 CFR Part 60. In my opinion, the property X meets does not meet the National Register Criteria. I recommend that this property be considered significant nationally statewide X locally. (See continuation sheet for additional comments.)

Claire F. Blackwell
Signature of certifying official Claire F. Blackwell/ Deputy SHPO

27 June 1993
Date

Missouri Department of Natural Resources
State or Federal agency and bureau

In my opinion, the property meets does not meet the National Register criteria. (See continuation sheet for additional comments.)

Signature of commenting or other official Date

State or Federal agency and bureau

4. National Park Service Certification

I, hereby certify that this property is:

entered in the National Register Patricia Andrews 8/12/93

 See continuation sheet.

 determined eligible for the National Register

 See continuation sheet.

 determined not eligible for the National Register

 removed from the National Register

 other (explain):

Signature of Keeper

Date of Action

Neosho Commercial Historic District
Name of Property

Newton County, Missouri
County and State

5. Classification

Ownership of Property (Check as many boxes as apply) Category of Property (Check only one box)

- | | |
|--|--|
| <input checked="" type="checkbox"/> private | <input type="checkbox"/> building(s) |
| <input checked="" type="checkbox"/> public-local | <input checked="" type="checkbox"/> district |
| <input type="checkbox"/> public-State | <input type="checkbox"/> site |
| <input type="checkbox"/> public-Federal | <input type="checkbox"/> structure |
| | <input type="checkbox"/> object |

Number of Resources within Property

(Do not include previously listed resources in the count).

Contributing	Noncontributing
<u>33</u>	<u>8</u> buildings
<u>0</u>	<u>0</u> sites
<u>0</u>	<u>1</u> structures
<u>0</u>	<u>0</u> objects
<u>33</u>	<u>9</u> Total

Number of contributing resources previously listed in the National Register N/A

Name of related multiple property listing (Enter "N/A" if property is not part of a multiple property listing.)

Historic Resources of Neosho, Newton County, Missouri

6. Function or Use

Historic Functions (Enter categories from instructions)

<u>COMMERCE/TRADE</u>	<u>business/professional/</u>
_____	<u>financial institution/</u>
_____	<u>specialty store/department/</u>
_____	<u>store</u>
<u>GOVERNMENT</u>	<u>city hall/courthouse</u>
_____	<u>correctional facility</u>

Current Functions (Enter categories from instructions)

<u>COMMERCE/TRADE</u>	<u>business/professional/</u>
_____	<u>financial institution/</u>
_____	<u>specialty store/department</u>
_____	<u>store/restaurant</u>
<u>GOVERNMENT</u>	<u>courthouse</u>
<u>RECREATION AND CULTURE</u>	<u>museum</u>

7. Description

Architectural Classification (Enter categories from instructions)

LATE VICTORIAN/Italianate/Romanesque
LATE 19TH AND EARLY 20TH CENTURY REVIVALS/Colonial Revival/Classical Revival
MODERN MOVEMENT/Art Deco

Materials (Enter categories from instructions)

foundation	<u>Stone</u>
roof	<u>Asphalt</u>
walls	<u>Brick</u>
other	<u>Metal</u>
	<u>Stone</u>

Narrative Description

(Describe the historic and current condition of the property on one or more continuation sheets.)

United States Department of the Interior
National Park Service

NATIONAL REGISTER OF HISTORIC PLACES
CONTINUATION SHEET

Section 7 Page 1

Neosho Commercial Historic
District
name of property

Newton County, Missouri
county and State

Summary

The Neosho Commercial Historic District is located in and around the original Court Square of Neosho, Missouri. The district is composed of one- to four-story commercial buildings constructed primarily between 1868 and 1915. The district retains its original street and block pattern from its original survey and plan. Within the district are 41 buildings of which 33 would be considered contributing to the character of the district. On the courthouse lawn is a modern pergola which is included as a non-contributing structure.

Neosho became an important commercial and trading center after the Civil War. By the late 1860s a series of one- and two-story brick commercial buildings were constructed on the Court Square facing the courthouse. These buildings were typical One-Part and Two-Part Commercial Blocks constructed in Missouri during the 19th century. Common details for these buildings include storefronts with display windows and cast iron columns or pilasters, and upper facades with sheet metal or brick decoration. The Italianate style with its arched entrances and bracketed cornices was used for many of the buildings constructed in these years.

By the early 20th century, the Neosho Court Square contained solid blocks of masonry buildings on all four sides facing the courthouse. The tallest of these, the four-story Haas Building was completed in 1906. The majority of buildings constructed after 1900 on the square were built with brick and glass storefronts and upper facade details such as rectangular windows and cornices of corbelled brick, cast concrete, or terra cotta. Several bank buildings were constructed with Colonial Revival details and the remodeling of the First National Bank in 1922 resulted in a Temple Front, Neo-classical facade.

In addition to the commercial buildings the Court Square and environs has also been the center for county and city public buildings. The present Newton County Courthouse was built in the center of the square in 1936 and replaced an earlier Second Empire style courthouse built in 1878. The oldest public building in the district is the Newton County Jail completed in 1888. This Second Empire style brick building is located one block north of the square and housed the county jail for almost fifty years. During the early 20th century city offices were located in the Haas Building prior to the construction of the Auditorium and City Hall on W. Main Street in 1938. Both the courthouse and city hall buildings were constructed in the Art Deco style by architect Neal Davis.

Since the 1930s few new buildings have been constructed in and around the Court Square area. The major changes to the buildings have been alterations to storefronts and the covering of upper facades with artificial sidings. Alterations have been most extensive on the west side of the square and this block no longer retains its historic integrity. The north, east, and south sides of the square plus adjacent blocks retain their original architectural character and are the most representative collection of historic commercial buildings in Neosho.

United States Department of the Interior
National Park Service

NATIONAL REGISTER OF HISTORIC PLACES
CONTINUATION SHEET

Section 7 Page 2

Neosho Commercial Historic
District
name of property

Newton County, Missouri
county and State

Individual Property Descriptions:

1. 101-103 E. Main Street (McGinty's): This two-story building was originally built in 1895 as part of the Golden Eagle Building. The storefront dates from ca. 1945 and has blue carrara glass paneled bulkheads, copper and glass display windows and tile floors. The upper facade has metal panels added ca. 1970. The building's upper facade is presently concealed and the building no longer retains its original integrity. (NC).

2. 105-109 E. Main Street (Matter's Jewelry; Picci's; Oldham Jewelry): Constructed in 1895 at a cost of \$15,000, this two-story, Two-Part commercial building was originally the home of the Golden Eagle Department Store. The building has three separate storefronts divided by original brick piers with stone detailing. The 105 storefront was remodeled ca. 1945 and has red tinted carrara glass panels, aluminum and glass display windows and door. Across the storefront is a wood and metal canopy. Adjacent to the storefront is an entrance which leads to the staircase. This entrance has a 12-light glass and wood door added ca. 1940.

The 107 storefront has a recessed entrance with two ca. 1970 glass and metal doors. Transoms have been enclosed on this storefront and wood panels added at the bulkheads. An additional solid wood door leads to the second story staircase. Over the door are two original single light transoms. The display window of this storefront has been altered but retains some sections of stone bulkheads. The 109 storefront was altered ca. 1960 with brick bulkheads and metal and glass display windows and doors. The storefront's transom is covered with wood panels.

The upper facade of the building has rectangular one-over-one and six-over-six wood sash windows with added storm windows. Windows have stone lintels and sills. The windows in the upper facade of 109 E. Main Street have been enclosed with wood panels and two, single light windows. Above the windows is a soldier course belt course. At the roofline is an original sheet metal cornice with large brackets and floral panels. (C)

3. 111 East Main Street (Neosho Savings and Loan Association): This is a two-story, brick and stone veneer Temple Front commercial building constructed in 1922. The building is three bays wide with full height Corinthian columns and pilasters on the main facade. The building's storefront was altered ca. 1980 with the addition of anodized aluminum, metal and glass display windows and doors. On the second story of the upper facade are three bays of original one-over-one wood sash, tri-part windows. Above the second story is a stone cornice and frieze inscribed "Neosho Building and Loan Association." Above this frieze is a concrete cornice with modillion blocks and dentils. At the roofline is a stone parapet wall. Windows on the alley facade have been bricked in. The interior was remodeled in 1992.

This building was originally the First National Bank and was built in 1905 on a lot purchased from M.E. Benton. In 1922, the bank purchased the adjoining lot and

United States Department of the Interior
National Park Service

NATIONAL REGISTER OF HISTORIC PLACES
CONTINUATION SHEET

Section 7 Page 3

Neosho Commercial Historic
District
name of property

Newton County, Missouri
county and State

building and remodeled and rebuilt the two buildings fronting forty feet on the square. The Neosho Building and Loan Association dates to 1884 and occupied several locations before moving into the First National Building ca. 1965. (C)

4. 113 East Main Street (Neosho Savings and Loan Association): 113 East Main Street is a two-story brick, Two-Part, three-bay commercial building constructed ca. 1905. The storefront and upper facade were altered in 1992 for use by the Neosho Savings and Loan Association. These alterations have included the removal of the storefront and addition of an arched window on the first story, and rebricking of the upper facade. Due to these alterations the building no longer retains its historic integrity. (NC)

5. 121-127 E. Main Street (Neosho Gift, Etc.; Dollar General Stores): This two-story brick, Two-Part commercial building was constructed in 1906 with four separate storefronts. The 121/123/125 storefronts are occupied by one business and have been altered with ca. 1970 brick bulkheads and metal and glass display windows and doors. Adjacent to the 121 storefront is an original recessed entrance with a single-light glass and wood door. The transom above these storefronts has been covered with wood panels. The 127 storefront contains a separate business and was remodeled ca. 1985 with metal and glass display windows and door. The storefront retains wood bulkheads which may be original. The transom above the storefront has been covered with wood panels. Adjacent to the 127 storefront is an entrance to the second floor. This entrance has a single-light glass and wood door and added wood panel over the glass light. The upper facade of the building has not been altered and retains its original design. The upper facade is divided into four bays with each bay containing paired one-over-one sash windows. These windows share rock faced stone lintels and sills. Below the windows is a belt course of yellow glazed brick and yellow glazed brick is also used in corbelling above the windows. Dividing the upper facade bays are brick piers with glazed brick panels. Below the roofline the glazed brick has been used to create diamond patterns. At the roofline is a parapet of rock faced stone. The building was built for the Briggs Hardware Company in 1906 after fire destroyed its original 1896 building. (C)

6. 129 East Main Street (Pizza Hut): This two-story brick, Two-Part commercial building was constructed in 1906 to replace an earlier building at this location destroyed by fire. The building is distinguished by its exterior of glazed white tile. The storefront is chamfered with a corner granite column and decorative capital at the southeast corner of the building. The storefront has been altered with metal and glass display windows and door, but retains some sections of frame bulkheads and display windows. Above the storefront is a terra cotta cornice with rectangular panels and egg and dart molding. The upper facade has three window openings containing original rectangular one-over-one wood sash windows. Below the roofline is another terra cotta cornice with dentils and a plain frieze. Similar window bays are located on the east facade and entrances on this facade have both original single-light glass and wood doors and ca. 1980 aluminum and glass doors. (C)

United States Department of the Interior
National Park Service

NATIONAL REGISTER OF HISTORIC PLACES
CONTINUATION SHEET

Section 7 Page 4

Neosho Commercial Historic
District
name of property

Newton County, Missouri
county and State

7. 107 West Main Street (Newton Co. Abstract and Title Co.): Two-story brick, Two-Part, rectangular plan commercial building built ca. 1920. The storefront has been altered with added stone veneer and ca. 1970 metal and glass doors. The transom has been covered with metal panels. Beneath the second story windows are bands of soldier and sailor brick courses. The upper floor windows are paired one-over-one rectangular wood sash. At the roofline is a flat parapet with concrete coping. (C)

8. 109-111 West Main Street (Neosho Auditorium and City Hall): Built to house city offices and an auditorium, this two-story civic and governmental building was designed in the Art Deco style by architect Neal C. Davis. It was constructed in 1938 by the Works Progress Administration. On the main facade are five sets of double doors of single-light glass and wood design. Above the doors are large single-light rectangular transoms with opaque lights. Also above the doors are chevron panels and vertical fluted panels. Windows are four-light hopper design. In the second story central bay the window openings have structural glass blocks. At the roofline is concrete indented panels. The building originally housed the city hall, public library, and meeting areas. The auditorium has a stage at one end, hardwood floors, and original wood seats in the gallery, which is lighted by original multi-light casement windows. (C)

9. 100 East Spring Street (Merle Norman Cosmetics): The Rice Building is a two-story brick, Two-Part, four-bay commercial building constructed in 1898. The storefront is chamfered and retains an original brick pier at the southwest corner. The storefront was altered ca. 1925 and in 1989. The primary entrance has a ca. 1925 single-light glass and wood door and a rectangular single-light transom. In the east bay of the storefront is a secondary entrance which also has a ca. 1925 single-light glass and wood door and transom. The central bay has metal and glass display windows added in 1989. Dividing the east bay from the rest of the storefront is an original cast iron pilaster. Above the storefront is a multi-light transom added ca. 1925. On the upper facade are four window openings with original one-over-one rectangular wood sash windows. The windows share rock-faced stone lintels and sills. At the roofline is a sheet metal bracketed cornice. The interior of this building was remodeled in 1989. (C)

10. 102-104 East Spring Street (Sim's Paint and Wallpaper; Rita's Sewing Center): Between 1909 and 1916 a one-story brick building was constructed at 102-108 East Spring Street with four separate storefronts. The building section at 102-104 has ca. 1970 metal panels over the upper facade and altered storefront. The storefront has added stone and concrete bulkheads and aluminum and glass display windows. Due to these alterations this building no longer retains integrity. (NC)

11. 106-108 East Spring Street (Stephen Morrow, Dentist; International Tours): This one-story brick, One-Part, two-bay commercial building was constructed ca. 1910. The building has two storefronts both of which were altered ca. 1960 with brick and stone veneer panels, and metal and glass display windows and doors. Across the width of the building is a ca. 1970 metal and wood awning. Above each storefront is a transom panel, each of which have been covered with wood panels.

United States Department of the Interior
National Park Service

NATIONAL REGISTER OF HISTORIC PLACES
CONTINUATION SHEET

Section 7 Page 5

Neosho Commercial Historic
District
name of property

Newton County, Missouri
county and State

The upper facade is composed of rectangular recessed brick panels. Below the roofline is a corbelled brick cornice. The storefront's original metal canopy remains and has a pressed metal ceiling. This canopy is now supported by metal columns. (C)

12. 110 East Spring Street (Taylor's Books): Two-story brick, Two-Part commercial building constructed ca. 1880. The building has a storefront which was altered ca. 1940. In the west bay is an original recessed entrance with a single-light glass and wood door and rectangular single-light transom. At the corner of this bay is an original cast iron pilaster. The central bay of the storefront is composed of glass and wood display windows on a tile bulkhead. In the east bay is a secondary entrance leading to the second story. This entrance has a ca. 1930 multi-light glass and wood door and adjacent to the door is an extended wood pier with Carrara glass panels. Above the storefront is a transom which has been covered with wood panels. The second story contains three window openings with each opening covered with wood panels. These window openings match those found at 114 East Spring Street and have cast iron sills and hood molding. Above the windows are round vent openings with star shaped grilles and a corbelled brick cornice at the roofline. (C)

13. 112 East Spring Street (McKean's Paint and Wallpaper): 112 East Spring Street is a two-story brick, Two-Part commercial building constructed ca. 1880. The building has a storefront added ca. 1980 with brick veneer bulkheads, and metal and glass display windows and door. The upper facade has two rectangular window openings which have been covered with wood panels. The window openings retain original rock faced rectangular lintels and sills. At the roofline is a corbelled brick cornice. The side entrance has a solid core door and windows have been enclosed. The interior was remodeled in the 1970s. (C)

14. 114 East Spring Street (Jerry's Fashions): This two-story brick, Two-Part commercial building with Italianate detailing was built ca. 1880. The storefront was altered ca. 1965 and has stone veneer bulkheads, an added wood canopy, aluminum and glass display windows and an enclosed transom. On the second story are three window bays with arched openings. The window openings have been covered with wood panels but retain original cast iron sills and sheet metal hood molding. The hood molding has acroterion panels. Above the windows are two round vent openings with star shaped grilles. At the roofline is a corbelled brick cornice. The upper facade is similar in appearance to 110 East Spring Street. (C)

15. 122 East Spring Street (Johnston's True Value): One-story brick, One-Part commercial building constructed ca. 1918. The building has a storefront altered ca. 1970 with metal and glass display windows and doors. Across the width of the storefront is a ca. 1980 metal awning. Above the storefront is a transom which has been covered with wood panels. The upper facade is composed of brick with a stuccoed surface. This facade has recessed brick and stucco panels. At the roofline is a stepped parapet. This building was constructed on the site of the 1885 opera house which burned in 1916. The present building appears to have been constructed within a few years after the fire. (C)

United States Department of the Interior
National Park Service

NATIONAL REGISTER OF HISTORIC PLACES
CONTINUATION SHEET

Section 7 Page 6

Neosho Commercial Historic
District
name of property

Newton County, Missouri
county and State

16. 124 East Spring Street (Johnston's True Value): This two-story brick, Two-Part commercial building was constructed ca. 1880. The building retains a ca. 1913 storefront with marble bulkheads, copper and glass display windows, and a central recessed entrance. The entrance retains a ca. 1913 tile floor and glass and wood door with a leaded glass transom. Adjacent to the door is a large single-light sidelight. Across the width of the building is a ca. 1970 metal awning and sign. Above the storefront is a large transom with opaque glass lights. On the second story are six window bays with rectangular window openings. The window openings have been enclosed with wood panels. Above the windows are rock-faced stone lintels and the windows rest on smooth stone sills. At the roofline the original cornice has been removed and covered with metal panels. The side entrance on the east bay leads to a staircase and the second story. This entrance has a ca. 1960 metal and glass door. This building was occupied by the Newton County Hardware Company in 1913 and the building has housed various hardware stores to the present. (C)

17. 126 East Spring Street (Shoe Center): 126 East Spring Street is a two-story brick, Two-Part commercial building constructed ca. 1880. The storefront was altered ca. 1960 with glass and metal display windows and doors. Across the width of the storefront is a ca. 1970 metal awning. The transom panel above the storefront has been covered with wood panels. On the second story are four window openings with rectangular one-over-one windows set within brick segmental arches. The arches have stone shoulders and stone keystones. All four windows share a continuous stone sill. At the roofline is a large sheet metal bracketed cornice with floral rosettes. (C)

18. 130 East Spring Street (Michael Shurley, Optometrist): The Haas Building is a four-story brick, Two-Part commercial building constructed in 1906. The storefront was altered ca. 1970 with the addition of concrete panels and a shed roof wood awning. The southeast corner of the storefront is chamfered and has an original granite column. Above the storefront level is a concrete cornice with modillion blocks. Window openings on the upper facade have been enclosed with wood panels and one-over-one rectangular metal windows. Over the windows are concrete label lintels. The upper facade is composed of two bays with each bay divided by brick pilasters with Doric capitals above the fourth floor level. Below the roofline is a concrete cornice with large modillion blocks and brackets. At the roofline is a stepped parapet with concrete coping. The interior of the first floor was remodeled ca. 1960. The upper floors are now used as apartments. An original staircase remains in the lobby off North Washington Street. At the rear is a ca. 1960 concrete block wing. (C)

19. 200 E. Spring Street (Machine Mart): This two-story brick building was constructed ca. 1895 and rebricked on the main facade ca. 1920. The storefront has ca. 1920 brick bulkheads and added aluminum and glass display windows and door. The main facade's upper floor windows have been enclosed with brick. Windows on the west facade are original one-over-one wood sash. Below the roofline are rectangular panels of soldier and sailor brick coursing. Despite the

United States Department of the Interior
National Park Service

NATIONAL REGISTER OF HISTORIC PLACES
CONTINUATION SHEET

Section 7 Page 7

Neosho Commercial Historic
District
name of property

Newton County, Missouri
county and State

window enclosures the building retains its sufficient design from the early 20th century to be contributing to the district. (C)

20. 202 East Spring Street (Smile Shoppe): The building at 202 East Spring Street was built ca. 1890 and is a two-story, Two-Part brick building. The building's west bay has an original single light glass and wood door which leads to a staircase and the second story. The storefront was altered ca. 1965 but retains original cast iron pilasters. The transom has been enclosed. On the upper facade are three window bays with each window covered with wood panels. Windows retain original cast iron sills and hood molding. There is a corbelled brick cornice at the roofline. The interior was remodeled in 1989 and made into separate offices. (C)

21. 204 East Spring Street (Vacant): This is a one-story brick, One-Part commercial building constructed ca. 1905. The building retains its original storefront and has brick bulkheads, fluted wood pilasters, copper and glass display windows, and a three-light transom. The entrance has a single-light glass and wood door with a rectangular single-light transom. Across the storefront is a structural steel lintel. At the corners are brick quoins with stone bases and capitals. Above the storefront is a corbelled brick cornice and panels. At the roofline is a pedimented stone parapet. (C)

22. 100-102 West Spring Street (Bashful Lady; Toni's): This building is a two-story brick, Italianate, Two-Part commercial building constructed ca. 1875. The corner storefront (100) was remodeled ca. 1985 in keeping with the original character of the building. It has a recessed entrance with a single light glass and wood door, frame bulkheads, large display windows and a multi-light transom. The 102 storefront has original wood bulkheads, display windows, and a recessed entrance with a ca. 1920 single-light glass and wood door. The transom panel has been covered with metal panels. Framing the storefront are stone quoins. The upper facade has six window bays with original two-over-two segmental arched sash windows. All windows have pedimented sheet metal hood molding and metal sills. At the roofline is a sheet metal cornice with dentils and a central pediment. Eight window bays extend on the east facade as does the cornice. The building originally had an iron balcony on the second story. On the east facade is an original four panel wood door and a second story arched transom. The stairs on this facade have been removed. The interior has an original wood ceiling and added metal cove panels. (C)

23. 104 West Spring Street (M.D. Weston, Optometrist): Constructed ca. 1880, this property is a two-story brick, Two-Part commercial building. The building's storefront was altered ca. 1980 with wood panels and metal and glass display windows and door. The upper facade is composed of two asymmetrical bays with the west bay containing a narrow one-over-one rectangular wood sash window. The window is set within a segmental arch and has brick label hood molding. The east bay has paired one-over-one rectangular wood sash windows set within a segmental arch with brick label hood molding. Dividing the two bays is a brick pier. At the roofline is a corbelled brick cornice. (C)

United States Department of the Interior
National Park Service

NATIONAL REGISTER OF HISTORIC PLACES
CONTINUATION SHEET

Section 7 Page 8

Neosho Commercial Historic
District
name of property

Newton County, Missouri
county and State

24. 112 West Spring Street (Tumble Town): The Heaton Building is a two-story brick, Two-Part commercial building with Italianate detailing constructed in 1895. The building's storefront was altered ca. 1960 with brick veneer, double doors of wood and glass, and metal display windows. On the upper facade are three window bays with each bay containing an original one-over-one rectangular wood sash window. The windows have brick relief arching with rock-faced limestone shoulders and keystones in the arches. The windows share a continuous stone sill. At the roofline is a sheet metal cornice with rectangular panels and rosette and floral designs. Beneath the cornice is a datestone inscribed "Heaton 1895." (C)

25. 114-118 West Spring Street (Dance Center; Joplin Globe; Bert Hurn, Attorney): The Berger's Block is a two-story brick, Two-Part, Italianate commercial building constructed in 1886. The building's storefront was altered ca. 1970 with brick veneer bulkheads, metal display windows and panels, and wood and metal doors. The upper facade is composed of seven window bays. The west three bays have one-over-one rounded arch sash windows with brick relief arching and stone sills. The east four window bays have rectangular twelve-over-twelve sash windows with single-light arched transoms. These windows also have brick relief arching and connecting the windows are corbelled brick belt courses. Dividing the window bays are brick wall buttresses. At the roofline is a sheet metal cornice with brackets and rosettes. The central bay has an elaborate stamped metal panel inscribed "Berger's Block 1886." Just below this metal panel is a small stone datestone inscribed "June 1, 1886." At the corners of the building are pyramidal design metal finials. (C)

26. 121 North Washington Street (Newton County Historical Museum): Two-story brick, three-bay, Second Empire style, governmental building constructed in 1888. The building has a limestone foundation and is of five-course common bond brick. The main (W) facade was covered with stucco ca. 1920 when a two-story porch was added to the main facade. The porch has a concrete and stucco railing with square stucco columns. The second story of the porch is enclosed and has paired one-over-one sash windows. The main entrance has a ca. 1960 wood and glass door and a two-light transom. Windows are arched one-over-one rectangular wood sash with stone sills and brick relief arching. At the roofline is a bracketed wood cornice. The building has a mansard roof with asphalt shingles.

The building was constructed to serve as the sheriff's house and county jail until the new jail was built on top of the new courthouse in 1936. The building was designed and constructed by the Pauly Jail Building and Manufacturing Company of St. Louis at a cost of \$6000. Six jail cells were originally located in a two-story rear ell constructed of brick. This ell has been removed. The Newton County Historical Museum has occupied the building since 1958. (C)

In 1991 and 1992, a log dwelling and frame schoolhouse have been located on the lot adjacent to the building. Both properties are non-contributing to the character of the district. (NC) (NC)

United States Department of the Interior
National Park Service

NATIONAL REGISTER OF HISTORIC PLACES
CONTINUATION SHEET

Section 7 Page 9

Neosho Commercial Historic
District
name of property

Newton County, Missouri
county and State

27. 201 North Washington Street (Ratliff Feed and Supply): This four-story brick, three-bay, two-part commercial building was built with Romanesque and Italianate influences in 1898. The first story of the main facade has a sheathing of rock-faced limestone. The entrance is set within a large Romanesque arched opening with radiating voussoirs. The arches spring from bases which have four marble columns and floral capitals. The entrance has ca. 1970 metal and glass doors but retains its original cast iron columns, frame bulkheads, display windows and transoms. Display windows which flank the entrance bay are also original with three-light transoms. Above the storefront is a stone frieze with incised chevron molding. The upper facade has three bays. The central bay has three one-over-one rectangular wood sash windows while the flanking bays have two one-over-one wood sash windows. Each window has a rock-faced stone lintel and sill. Dividing each bay are rock-faced stone piers and at the corners of the building are also stone piers. Windows on the fourth floor are arched with stone keystones. At the roofline is a large sheet-metal cornice with dentils and brackets. The central bay of the cornice is pedimented with a stamped panel inscribed "Edw. Haas, 1898." The north and south facades are divided into six bays with similar window designs. At the rear of the building is an original one-story wing with arched windows and corbelled brick panels. The interior retains an original pressed metal ceiling, columns with pressed metal panels and Corinthian capitals, and a cast iron safe. (C)

28. 101-103 South Washington Street (Masonic Lodge; Velveten Rabbit; Brighten Your Home Interiors): The Masonic Lodge is a two-story brick, Two-Part commercial building originally constructed in 1883 and remodeled in 1913. The building has three bays with the central bay containing an entrance opening onto stairs leading to the second story. This entrance has a ca. 1960 metal and glass door, original brick piers, and above the door are yellow glazed brick belt courses and pediment. The 101 and 103 storefronts were both remodeled ca. 1960 with brick bulkheads and metal and glass display windows. The 103 storefront retains its original entrance with a single-light glass and wood door. Transoms over both storefronts have been covered with wood panels. Above both storefronts is a belt course of yellow glazed soldier and sailor brick courses. The upper facade is composed of two bays with extensive use of yellow glazed brick. The two window openings on the facade contain ca. 1960 metal windows. The window openings retain original surrounds with glazed brick lintels, sills, and quoins. The corners of the building also have glazed quoining. Above the windows are brick dentils, rectangular panels, and belt courses of glazed brick. At the roofline is terra cotta coping at the parapet walls and decorative concrete finials. The interior has been remodeled but retains open floor space. (C)

29. 105-107 South Washington Street (Metcalf Studio): This two-story brick, two-part commercial building was constructed ca. 1928. The storefront is divided into two bays with both bays altered ca. 1990 with wood panels and wood and glass doors. Dividing the storefront bays are brick piers of soldier and sailor brick coursing and concrete capitals. Above the storefront is a soldier course belt course. On the upper facade are six window openings with each opening containing a ca. 1990 one-over-one fixed window. The windows share a sailor course brick

United States Department of the Interior
National Park Service

NATIONAL REGISTER OF HISTORIC PLACES
CONTINUATION SHEET

Section 7 Page 10

Neosho Commercial Historic
District
name of property

Newton County, Missouri
county and State

sill and the window surrounds have soldier coursing and concrete shoulders. Below the roofline is a large rectangular brick panel with sailor or header bond brick. At the roofline is a corbelled brick cornice and terra cotta coping at the parapet. (C)

30. 109 South Washington (Oddfellows Hall; Town and Country Carpet): Two-story brick building constructed ca. 1880 and remodeled ca. 1905. The building presently has an aluminum facade and storefront added ca. 1970. The building burned in 1969 but the original walls remain. The storefront has stone veneer and aluminum and glass display windows. The upper facade is covered with aluminum panels. This building originally housed the B.H. Kirk Wagon factory. In the early 1900s the main facade was remodeled with an added side staircase leading to the Oddfellows Hall on the second story. The original facade has been concealed and the building no longer retains integrity. (NC)

31. 115-117 South Washington Street (Mardick Furniture; East Side Shoe Store): One-story brick building constructed ca. 1890. The 115 storefront has original brick piers but the door has been removed. The 117 storefront has an original single light glass and wood door. Bulkheads were covered with an aluminum and plastic upper facade in 1989. The upper facade has aluminum panels added in 1989. Historic photographs show the building as having large transoms and a corbelled brick cornice. These details remain but are hidden beneath the added panels. Due to alterations the building no longer retains integrity. (NC)

32. 119-123 South Washington Street (Sims, Bridges, and Dolence, Attorneys; Ozark Business Systems; Radio Shack): This two-story brick, Two-Part commercial building was constructed in 1902. This building has three separate sections and on each section is a stone panel at the roofline inscribed with what appears to be original occupant names. The 123 section has "Miller-Wills" inscribed; the 121 section has "The Times" inscribed; and the 119 section has "J. Pickens" inscribed. All of the storefronts have been altered in recent decades with a variety of materials such as brick veneers and metal and glass doors and display windows. The upper facade has six bays of window openings with the openings in the 119/121 sections covered with wood panels. The 123 section retains original one-over-one rectangular wood sash windows and all window openings have smooth stone sills and rock faced stone lintels. Below the roofline are brown glazed brick belt courses and a blind Romanesque arcade. Dividing each bay are rounded brick and stone buttresses topped with stone finials. At the roofline is rock faced stone coping and finials. (C)

33. 125 South Washington Street (WXY Sporting Goods): Constructed in 1917 to house the Neosho Savings Bank, this is a two-story brick, Two-Part, commercial building. The building's storefront retains original brick piers, stone quoins, and brick bulkheads. The storefront, which was rebricked ca. 1970, has ca. 1970 metal and glass display windows and door. Above the storefront is a transom covered with a wood sign panel. On the upper facade are three bays with the central bay containing paired one-over-one rectangular wood sash windows. The east and west bays have one-over-one sash windows. The windows have stone sills

United States Department of the Interior
National Park Service

NATIONAL REGISTER OF HISTORIC PLACES
CONTINUATION SHEET

Section 7 Page 11

Neosho Commercial Historic
District
name of property

Newton County, Missouri
county and State

and lintels. Below the east and west windows are rectangular brick and concrete panels. Below the roofline is a concrete cornice with modillion blocks. At the roofline is a parapet wall with concrete coping. The entrance on the south facade has original single light glass and wood double doors and an arched transom (enclosed with wood). The entrance has an arched opening. A garage bay was added to the 208 E. Main storefront. The 210 storefront has an original single light glass and wood door. The rest of the storefront has concrete bulkheads and added wood panels replace display windows. In 1916 the Neosho Savings Bank purchased the lot and architect Neal C. Davis designed a new building for the bank which was completed in 1917. The building was occupied by the bank until the 1930s. (C)

34. 110 North Wood Street (Vacant): This two-story brick, Two-Part commercial building was constructed ca. 1900. The building's storefront was altered ca. 1970 with concrete bulkheads, metal and glass display windows and doors and side entrance. Above the display windows is a ten-light transom which appears to date to a ca. 1920 remodeling. The upper facade retains its original pressed metal design. There are four window bays with original one-over-one rectangular wood sash windows. Dividing each bay are paired Ionic design engaged metal columns. These columns have floral panels. Above the windows is a frieze with rosettes. The original cornice at the roofline has been removed. (C)

35. 112 North Wood Street (Michael Kelley, C.P.A.): This address is composed of two one-story buildings which have been joined together as one building. The south section is a ca. 1900 brick building with ca. 1960 storefront. There is no entrance but there are two windows. Above the windows is an original ten-light transom. At the roofline is a sheet metal cornice. The interior was remodeled in 1981 and in 1988 the building next door was purchased and remodeled. The north section was built ca. 1960 and is of concrete block with a brick facade. Due to building's age and alterations it is non-contributing to the character of the district. (NC)

36. 114 North Wood Street (Severs and Stroop): Two-story brick, Two-Part commercial building constructed in 1905. The building's storefront has been somewhat remodeled with a ca. 1970 glass and metal door at the entrance. In the north bay is a secondary entrance leading to the second story staircase. This door is an original two-light glass and wood design with a rectangular transom. Display windows and frame bulkheads are original and over the entrances and windows are multi-light transoms. Across the width of the storefront is a structural steel lintel. On the upper facade are two window bays with each bay containing paired one-over-one rectangular wood sash windows. The windows rest on a continuous rock-faced stone sill and above the windows are stone lintels. At the roofline is a corbelled brick cornice and stone parapet. The brick just below the roofline is textured and there is a stone panel inscribed "Heating and Plumbing." (C)

37. 116 North Wood Street (Neosho Beauty College): One-story brick, One-Part commercial building constructed ca. 1930. The building retains most of its original storefront with brick bulkheads, concrete bulkheads, and copper and

United States Department of the Interior
National Park Service

NATIONAL REGISTER OF HISTORIC PLACES
CONTINUATION SHEET

Section 7 Page 12

Neosho Commercial Historic
District
name of property

Newton County, Missouri
county and State

glass display windows. The storefront has three bays with the central bay containing an original single-light glass and wood door. Above the door is a ca. 1980 stained glass light. Dividing each bay is a brick pier. The south storefront has a ca. 1960 glass and metal door. The upper facade is of wire brick with an inset rectangular panel of header bond brick. At the roofline is a stepped parapet with terra cotta coping. (C)

38. 200 South Wood Street (Floyd's Jewelry): Originally built in 1913 to house the Newton County Bank, this two-story brick, Two-Part commercial building was constructed with Colonial Revival detailing. The building has a chamfered corner entrance with a square stone column. Part of the storefront was covered with metal panels in 1967 but visible are rock-faced stone bulkheads and brick piers. The entrance and display windows are of ca. 1970 metal and glass. The building has stone quoins. On the upper facade, facing Wood Street, are four window bays with rectangular one-over-one wood sash windows and brick soldier course lintels. At the northeast corner, the bay projects slightly and has stone quoins. Below the roofline is a terra cotta cornice with modillion blocks. On the Main Street facade are seven window bays with both paired and single one-over-one sash windows. (C)

39. Courthouse Square (Newton County Courthouse): This two-story Carthage stone governmental building was constructed with Art Deco influences in 1936. The building was constructed in a cross gable plan with one-story wings extending to the north and south from the east and west sections of the building. The building is oriented with the primary entrances located on the east and west facades. These facades are composed of five bays while the north and south facades are also of five bays. The exterior of the building is of smooth stone panels and rests on a raised basement. The basement level has small rectangular window openings with ca. 1980 two-light casement windows. The entrance surrounds have fluted pilasters and concrete panels with chevron molding. The doors were added ca. 1980 and are of aluminum and glass design. Window openings have incised stone lintels but the windows are ca. 1980 metal casement design added ca. 1980. Each bay is divided by fluted pilasters. At the roofline are diamond shaped stone fret bands and panels inscribed with chevron molding and motifs such as the scales of justice and eagle and floral designs. On the north facade a one-story wing was added ca. 1980 to provide for handicapped access. On the south facade is a large ca. 1980 HVAC unit which has been surrounded with a chain link fence. The interior retains original wood doors, marble wainscoting, fluted marble pilasters, and metal staircases. (C)

The landscape architect for the courthouse grounds was M.V. Woodward. Much of this original design has been lost through the introduction of modern sidewalks and landscape elements. At the southeast corner of the courthouse grounds is a rectangular brick pergola constructed in the 1970s. This structure was constructed as an exact replica of the early 20th century pergola which stood at this location. Due to its recent construction, the pergola is included as a non-contributing structure (NC).

Neosho Commercial Historic District

Newton County, Missouri

Name of Property

County and State

8. Statement of Significance

Applicable National Register Criteria

(Mark "x" in one or more boxes for the criteria qualifying the property for National Register listing)

- X A Property is associated with events that have made a significant contribution to the broad patterns of our history.
B Property is associated with the lives of persons significant in our past.
X C Property embodies the distinctive characteristics of a type, period, or method of construction or represents the work of a master, or possesses high artistic values, or represents a significant and distinguishable entity whose components lack individual distinction.
D Property has yielded, or is likely to yield information important in prehistory or history.

Criteria Considerations

(Mark "X" in all the boxes that apply.)

- A owned by a religious institution or used for religious purposes.
B removed from its original location.
C a birthplace or a grave.
D a cemetery.
E a reconstructed building, object, or structure.
F a commemorative property.
G less than 50 years of age or achieved significance within the past 50 years.

Areas of Significance

(Enter categories from instructions).

- Architecture
Commerce
Politics/Government

Period of Significance

Ca. 1868 - 1943

Significant Dates

N/A

Significant Person

(Complete if Criterion B is marked above)

N/A

Cultural Affiliation

N/A

Architect/Builder

Architect/Davis, Neal C.
Builder/Unknown

Narrative Statement of Significance

(Explain the significance of the property on one or more continuation sheets.)

9. Major Bibliographical References

(Cite the books, articles, and other sources used in preparing this form on one or more continuation sheets.)

Previous documentation on file (NPS)

- preliminary determination of individual listing (36 CFR 67) has been requested.
previously listed in the National Register
previously determined eligible by the National Register
designated a National Historic Landmark
recorded by Historic American Buildings Survey #
recorded by Historic American Engineering Record #

Primary Location of Additional Data

- X State Historic Preservation Office
Other State agency
Federal agency
Local government
University
Other

Name of repository:

United States Department of the Interior
National Park Service

NATIONAL REGISTER OF HISTORIC PLACES
CONTINUATION SHEET

Section 8 Page 13

Neosho Commercial Historic
District
name of property
Newton County, Missouri
county and State

Summary

The Neosho Commercial Historic District is significant under Criterion C in the area of architecture and under Criterion A in the area of commerce; in addition, the Newton County Courthouse, individually eligible under Criterion C, architecture, and Criterion A, politics/government, is located within the boundaries of the district. The district contains the largest collection of historic commercial and public buildings in Neosho. The district is composed of forty-one primary buildings, of which thirty-three are counted as contributing, and one noncontributing structure located in and around the city's Court Square, which has been the traditional commercial and governmental center of Neosho and Newton County since the mid-19th century (see Historic Resources of Neosho, Newton County, Missouri MPS: Commercial Development of Neosho, ca. 1868-ca. 1943; and Civic and Governmental Buildings in Neosho, 1888-1943). The period of significance extends from circa 1868, the approximate date of construction of the earliest buildings, to 1943, the arbitrary fifty year limit. Commercial significance of the district continued unabated until that time, as well as the political/governmental significance of the courthouse, which is the oldest extant building which has served as the center and focus of county government in Newton County.

Neosho was a small trading center of a few buildings when it was selected as the seat of Newton County in 1839. A survey of the community was undertaken in 1846 which laid out the Court Square and surrounding blocks. The design of the Court Square followed that of the "Shelbyville Plan" which has lots arranged to face a central courthouse block. A brick courthouse replaced an earlier log structure in 1850 and over the next decade numerous dwellings and commercial buildings were constructed in and around the Court Square.

Following the Civil War, Neosho became a prominent commercial area of southwest Missouri during the late 19th century. The population of the community grew from approximately 500 to 2,725 in 1900. During these decades dozens of brick commercial buildings were built around the square containing a wide variety of businesses. In addition to shops and stores the city also boasted numerous manufacturing companies such as wagon factories and mills. A new courthouse was constructed in 1878 followed by a county jail in 1888. At the turn of the century Neosho was a thriving community connected by three rail lines and exporting a variety of products and agricultural produce.

The Court Square continued as Neosho's commercial and governmental center well into the 20th century. Numerous commercial buildings were constructed from 1900 to 1930 including the four-story Haas Building on the north side of the square. During the Depression the federal government assisted in the completion of the present Newton County Courthouse and Auditorium and City Hall. The Court Square's period of significance extends to the fifty year limit, or 1943.

United States Department of the Interior
National Park Service

NATIONAL REGISTER OF HISTORIC PLACES
CONTINUATION SHEET

Section 8 Page 14

Neosho Commercial Historic
 District
name of property

 Newton County, Missouri
county and State

The early 20th century appearance of the Court Square continues largely to the present. The majority of the existing buildings on the square pre-date 1930 and display their original upper facade design and decoration. Alterations have been mainly confined to the building's storefronts except for properties on the west side of the square which is omitted from the district's boundary. The Neosho Commercial Historic District remains an important commercial and governmental center of the region. The district includes 41 buildings, of which 33 would be considered contributing to the character of the district. The district contains the largest contiguous collection of historic commercial, civic, and governmental buildings in Neosho.

The Neosho Commercial Historic District contains properties included within the contexts of Commercial Development of Neosho, ca. 1875 - ca. 1943; and Civic and Governmental Buildings in Neosho, 1888-1938. These contexts are more fully described in the multiple property submission "Historic Resources of Neosho, Newton County, Missouri."

Neosho Commercial Historic District
Name of Property

Newton County, Missouri
County and State

10. Geographical Data

Acreage of Property 9.9 acres

UTM References

(Place additional UTM references on a continuation sheet)

	Zone	Easting	Northing	Zone	Easting	Northing
A	15	377980	4081240	B	15	378260 4081220
C	15	378240	4080920	D	15	377960 4080940

See continuation sheet.

Verbal Boundary Description

(Describe the boundaries of the property on a continuation sheet.)

Boundary Justification

(Explain why the boundaries were selected on a continuation sheet.)

11. Form Prepared By

name/title Philip Thomason
organization Thomason and Associates date March 1, 1993
street & number P.O. Box 121225 telephone 615-383-0227
city or town Nashville state TN zip code 37212

Additional Documentation

Submit the following items with the completed form:

Continuation Sheets

Maps

- A USGS map (7.5 or 15 minute series) indicating the property's location.
- A sketch map for historic districts and properties having large acreage or numerous resources.

Photographs

Representative black and white photographs of the property.

Additional Items

(Check with the SHPO or FPO for any additional items)

Property Owner

(Complete this item at the request of the SHPO or FPO.)

name
street & number telephone
city or town state zip code

United States Department of the Interior
National Park Service

NATIONAL REGISTER OF HISTORIC PLACES
CONTINUATION SHEET

Section 10 Page 15

Neosho Commercial Historic
District
name of property
Newton County, Missouri
county and State

Verbal Boundary Description:

The boundary for the Neosho Commercial Historic District includes Block 11, Lots 3, 4, and 5; Block 12, Lots 3, 5, 6, 7, 8, 9, 10, 11, 12, 12.1, and 13; Block 13, Lots 1, 11, 11.01, 12, 13, 14, 15, 16, 17, 18, 19 and 20; Block 18, Lot 1; Block 19, Lots 5, 6, 7, 8, 9, 10, 11, and 12; Block 24, Lots 1, 2, 4, 5, 6, 6.01, 7, 8, 9; Block 25, Lots 1, 2, and 3, all in the Original Town of Neosho, Newton County, MO.

Verbal Boundary Justification:

The boundary for the Neosho Commercial Historic District is drawn to include the largest concentration of pre-1940 commercial and public buildings retaining integrity in and around the Court Square of Neosho. The boundary includes the north, west, and south sides of the square plus adjacent blocks of Main Street, Spring Street, Washington Street, and Wood Street. The boundary is drawn to include contiguous commercial buildings located within one block of the Court Square which are historically associated with the square's commercial development. The boundary extends on the north to include the Newton County Jail and Haas Wholesale Grocery Company building due to their significance in local commerce and association with county government. The west side of the square no longer retains integrity due to extensive alterations and is excluded from the district boundary.

United States Department of the Interior
National Park Service

NATIONAL REGISTER OF HISTORIC PLACES
CONTINUATION SHEET

Section Photos Page 16

Neosho Commercial Historic
District
name of property

Newton County, Missouri
county and State

The following information is the same for all photos:

Neosho Commercial Historic District, Newton County, Missouri

Photo by: Thomason and Associates, Nashville, Tennessee

Neg: Missouri Cultural Resource Inventory, Missouri Department of Natural Resources

Date: January, 1993

Photo No. 1: 100 block E. Main Street, view towards southwest.

Photo No. 2: 121-127 and 129 E. Main Street, view towards southwest.

Photo No. 3: 111 and 113 E. Main Street, view towards southwest.

Photo No. 4: 111 E. Main Street, view towards south.

Photo No. 5: 101-103 and 105-109 E. Main Street, view towards southwest.

Photo No. 6: 200 S. Wood Street and 100 block W. Main Street, view towards southwest.

Photo No. 7: 111 W. Main Street, Neosho Auditorium and City Hall, view towards southwest.

Photo No. 8: 100 block of W. Spring Street, view towards northwest.

Photo No. 9: 112 and 114-118 W. Spring Street, view towards northwest.

Photo No. 10: Detail of cornice at 114-118 W. Spring Street, view towards north.

Photo No. 11: 100 block of N. Wood Street, view towards northwest.

Photo No. 12: 100 block of E. Spring Street, view towards northeast.

Photo No. 13: 100 E. Spring Street, view towards northeast.

Photo No. 14: Entrance detail of 124 E. Spring Street, view towards north.

Photo No. 15: 130 E. Spring Street, view towards north.

Photo No. 16: 200 block of E. Spring Street, view towards northeast.

Photo No. 17: 121 and 201 N. Washington Street, view towards northeast.

Photo No. 18: 121 N. Washington Street, view towards northeast.

Photo No. 19: 201 N. Washington Street, view towards northeast.

Photo No. 20: 101-103 and 105-107 S. Washington Street, view towards southeast.

United States Department of the Interior
National Park Service

NATIONAL REGISTER OF HISTORIC PLACES
CONTINUATION SHEET

Section Photos Page 17

Neosho Commercial Historic
District
name of property

Newton County, Missouri
county and State

Photo No. 21: Cornice detail of 119-123 S. Washington Street.

Photo No. 22: 119-123 and 125 S. Washington Street.

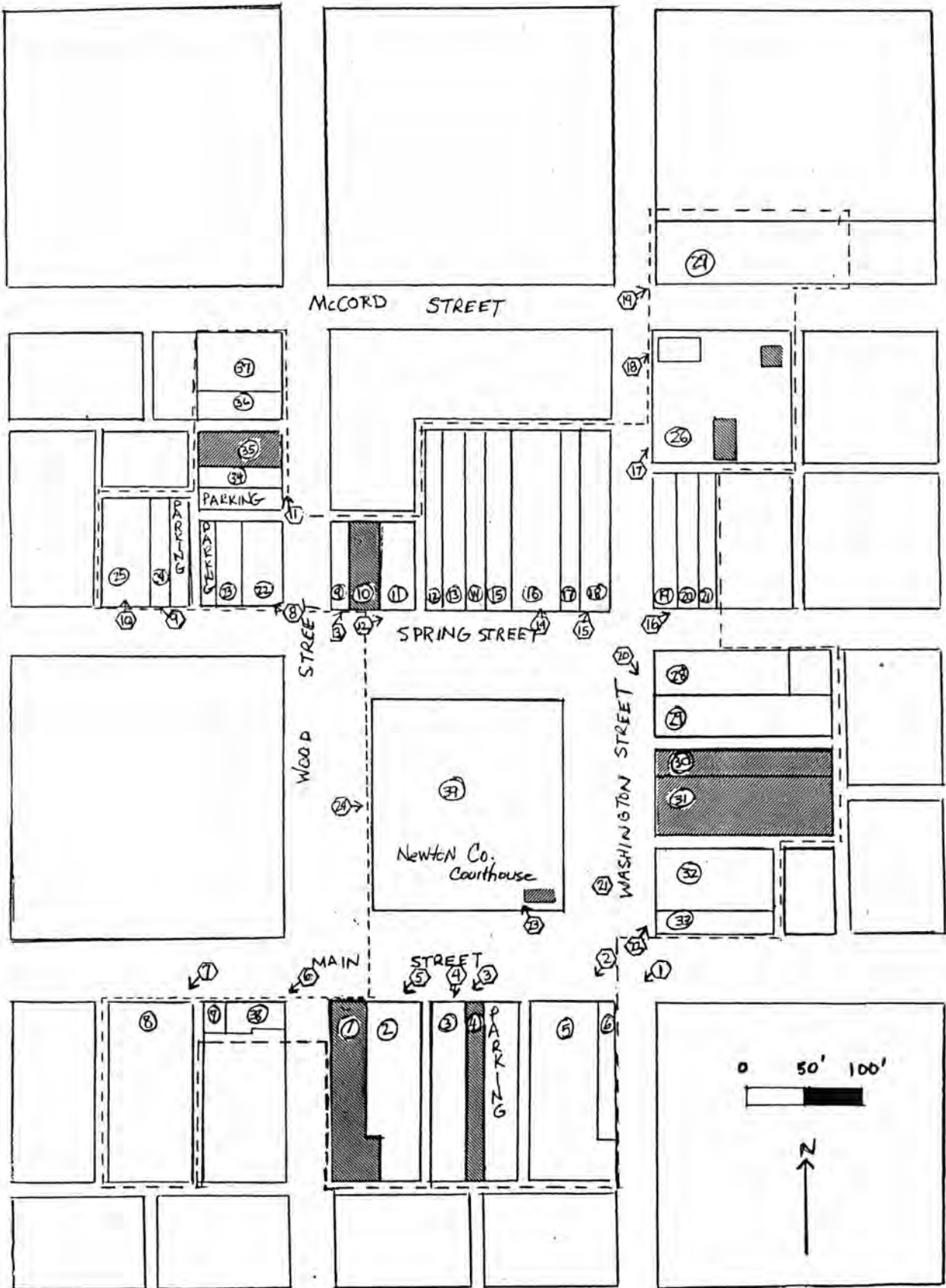
Photo No. 23: Newton County Courthouse, view of south facade facing northwest.

Photo No. 24: Newton County Courthouse, view of west facade, facing east.

Neosho Commercial Historic District, Neosho, Newton County

DISTRICT BOUNDARY = - - - -

NONCONTRIBUTING = [shaded box]



**United States Department of the Interior
National Park Service**

**National Register of Historic Places
Continuation Sheet**

Section number _____ Page _____

Neosho MPS

Newton County, MISSOURI

Date Listed

8/12/93

8/12/93

COVER

1. Neosho Commercial Historic District



Photo #1

Neosho Commercial Historic District

Newton Co., MO



Photo #2

Neosho Commercial Historic District

Newton Co., MO



Photo #3 Neosho Commercial Historic District

Newton Co, MO



Photo #4

Neosho Commercial Historic District

Newton Co., MO



Photo #5 Neosho Commercial Historic District

Newton Co., MO



Photo #6 Neosho Commercial Historic District

Newton Co., MO



Photo #7 Neosho Commercial Historic District

Newton Co., MO



Photo #8 Neosho Commercial Historic District

Newton Co., MO



Photo #9

Neosho Commercial Historic District

Newton Co., MO



Photo #10 Neosho Commercial Historic District

Newton Co., MO



Photo #11 Neosho Commercial Historic District

Newton Co., MD



Photo #12 Neosho Commercial Historic District

Newton Co., MO



Photo #13

Neosho Commercial Historic District

Newton Co., MO



Photo #14 Neosho Commercial Historic District

Newton Co., MO



Photo #15 Neosho Commercial Historic District

Newton Co., MO



Photo #16 Neosho Commercial Historic District

Newton Co., MO



Photo #17 Neosho Commercial Historic District

Newton Co., MD



Photo #18 Neosho Commercial Historic District

Newton Co., MO



Photo #19 Neosho Commercial Historic District

Newton Co., MO



Photo #20 Neosho Commercial Historic District

Newton Co., MO



Photo #21 Neosho Commercial Historic District

Newton Co., MO



Photo #22 Neosho Commercial Historic District

Newton Co., MO



Photo # 23 Newsho Commercial Historic District

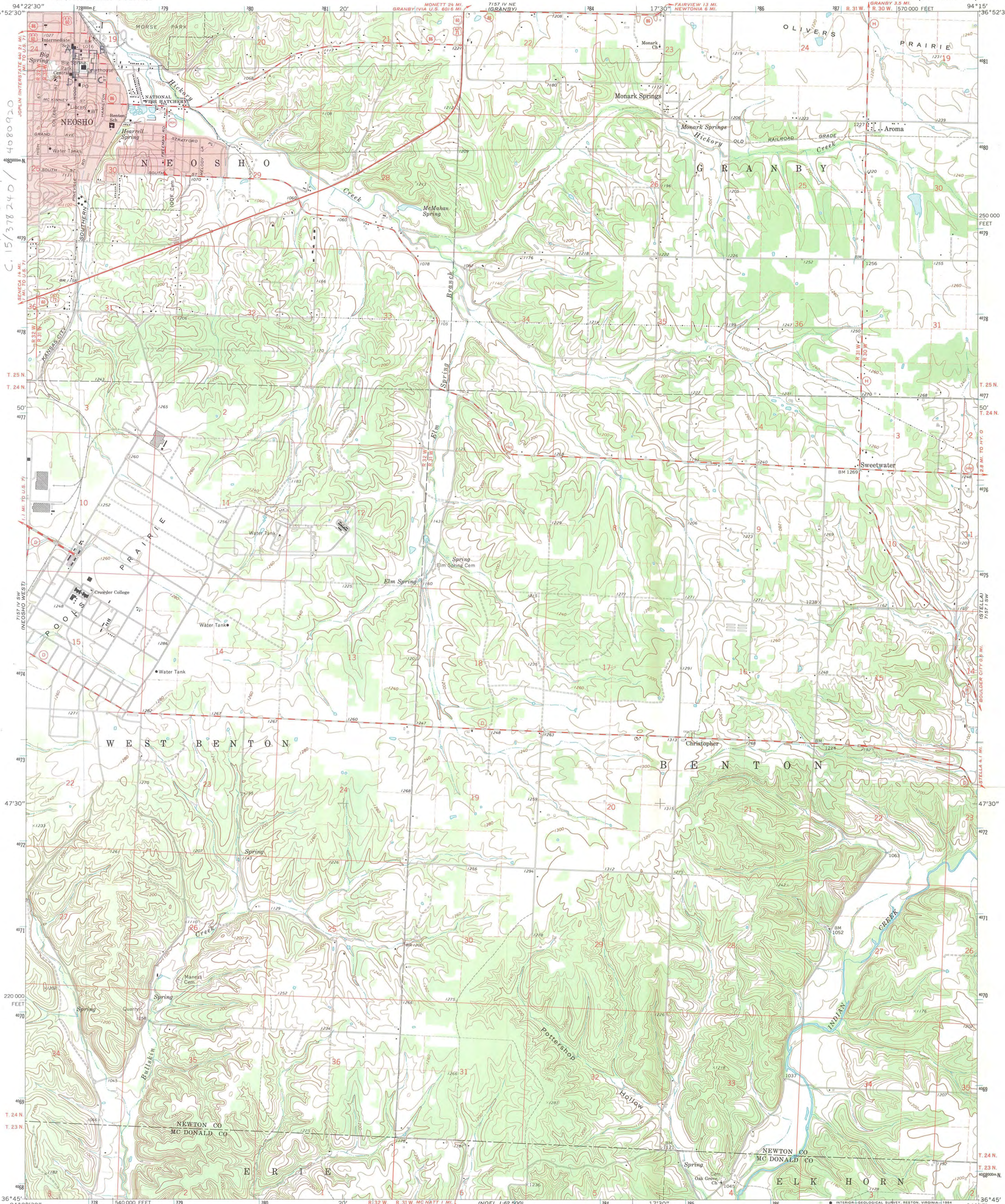
Newton Co., MO



Photo #24 Neosho Commercial Historic District

Newton Co., MO

Historic Reserves of Neosho, Newton County, MO MPS:
Neosho Commercial Historic District
Neosho Newton County, MO
A. 15/377980/4081240
B. 15/378260/4081220
C. 15/378240/4080920
D. 15/377960/4080940



Maped, edited, and published by the Geological Survey
Control by USGS and USC&GS
Topography by photogrammetric methods from aerial
photographs taken 1970. Field checked 1972
Polyconic projection. 1927 North American datum
10,000-foot grid based on Missouri coordinate system, west zone
1000-meter Universal Transverse Mercator grid ticks,
zone 15, shown in blue
Red tint indicates areas in which only landmark buildings are shown
Fine red dashed lines indicate selected fence and field lines where
generally visible on aerial photographs. This information is unchecked
Map photorevised 1981
No major culture or drainage changes observed

MAP SALES
AND
SERVICES
100 Lakeshore Bldg.
Newport, Va. 23210
803-646-3388

UTM GRID AND 1972 MAGNETIC NORTH
DECLINATION AT CENTER OF SHEET
7° 12' 14" N

SCALE 1:24,000
CONTOUR INTERVAL 20 FEET
NATIONAL GEODETIC VERTICAL DATUM OF 1929

1000 0 1000 2000 3000 4000 5000 6000 7000 FEET
1 5 10 15 20 25 30 35 40 45 50 KILOMETER

THIS MAP COMPLIES WITH NATIONAL MAP ACCURACY STANDARDS
FOR SALE BY U.S. GEOLOGICAL SURVEY, DENVER, COLORADO 80225, OR RESTON, VIRGINIA 22092
AND DIVISION OF GEOLOGY AND LAND SURVEY
MISSOURI DEPARTMENT OF NATURAL RESOURCES, ROLLA, MISSOURI 65401
A FOLDER DESCRIBING TOPOGRAPHIC MAPS AND SYMBOLS IS AVAILABLE ON REQUEST

ROAD CLASSIFICATION

Primary highway, hard surface	Light-duty road, hard or improved surface
Secondary highway, hard surface	Unimproved road
Interstate Route	U.S. Route
	State Route

MISSOURI
QUADRANGLE LOCATION

NEOSHO EAST, MO.
N3645-W94157.5
1972
PHOTOINSPECTED 1981
DMA 7157 IV SE-SERIES V879

UNITED STATES DEPARTMENT OF THE INTERIOR
NATIONAL PARK SERVICE

NATIONAL REGISTER OF HISTORIC PLACES
EVALUATION/RETURN SHEET

REQUESTED ACTION: NOMINATION

PROPERTY Neosho Commercial Historic District
NAME:

MULTIPLE Neosho MPS
NAME:

STATE & COUNTY: MISSOURI, Newton

DATE RECEIVED: 6/28/93 DATE OF PENDING LIST: 7/14/93
DATE OF 16TH DAY: 7/30/93 DATE OF 45TH DAY: 8/12/93
DATE OF WEEKLY LIST:

REFERENCE NUMBER: 93000722

NOMINATOR: STATE

REASONS FOR REVIEW:

APPEAL: N DATA PROBLEM: N LANDSCAPE: N LESS THAN 50 YEARS: N
OTHER: N PDIL: N PERIOD: N PROGRAM UNAPPROVED: N
REQUEST: N SAMPLE: Y SLR DRAFT: N NATIONAL: N

COMMENT WAIVER: N

ACCEPT RETURN REJECT 8/12/93 DATE

ABSTRACT/SUMMARY COMMENTS:

The Neosho Commercial Historic District is eligible under Criteria A and C in the areas of Architecture (C), Commerce (A), and Politics/Government (A). The district represents the commercial and governmental heart of this small southwestern Missouri community and focuses upon the central courthouse square and its WPA-built county courthouse. Architecturally, the buildings embody a significant collection of one to four-story brick and stone buildings--largely erected between 1870 and 1940--including examples of vernacular Italianate, Romanesque Revival, Classical Revival, and Art Deco design. The nomination meets all registration requirements set out in the MPS cover document.

RECOM./CRITERIA Accept A+C
REVIEWER Paul R. Lusignan
DISCIPLINE HISTORIAN
DATE 8/10/93

DOCUMENTATION see attached comments Y/N see attached SLR Y/N

CLASSIFICATION

count resource type

STATE/FEDERAL AGENCY CERTIFICATION

FUNCTION

historic current

DESCRIPTION

architectural classification
 materials
 descriptive text

SIGNIFICANCE

Period Areas of Significance--Check and justify below

Specific dates Builder/Architect
Statement of Significance (in one paragraph)

summary paragraph
 completeness
 clarity
 applicable criteria
 justification of areas checked
 relating significance to the resource
 context
 relationship of integrity to significance
 justification of exception
 other

BIBLIOGRAPHY

GEOGRAPHICAL DATA

acreage verbal boundary description
 UTM's boundary justification

ACCOMPANYING DOCUMENTATION/PRESENTATION

sketch maps USGS maps photographs presentation

OTHER COMMENTS

Questions concerning this nomination may be directed to

_____ Phone _____

Signed _____ Date _____

STATE OF MISSOURI
DEPARTMENT OF NATURAL RESOURCES

Mel Carnahan, Governor • David A. Shott, Director

DIVISION OF STATE PARKS

P.O. Box 176 Jefferson City, MO 65102-0176 (314)751-2479

FAX (314)751-8656

July 2, 1993

Carol Shull
National Register Branch
Interagency Resources Division
National Park Service
800 N. Capitol Street, Suite 250
P.O. Box 37127
Washington, D.C. 20002

Dear Ms. Shull:

On June 24, the Missouri Historic Preservation Program submitted the MPS "Historic Resources of Neosho, Newton County, Missouri" and a nomination for the Neosho Commercial Historic District. In the letter which accompanied these submissions, it was incorrectly stated that no objections to the district nomination were received.

Two notarized objections were received and one objection which was not notarized. These objections are enclosed. We regret any inconvenience this may have caused. If you have any questions, please contact our National Register Coordinator, Steven Mitchell, at 314/751-5368.

Sincerely,

HISTORIC PRESERVATION PROGRAM



Claire F. Blackwell
Director and Deputy State Historic
Preservation Officer

CFB:sem

Enclosures: As stated

RECEIVED 413

JUL 8 1993

PRESIDING COMMISSIONER
JERRY OWEN

ASSOCIATE COMMISSIONERS
MELVIN L. ALFORD
BUD POWELL



NEWTON COUNTY COMMISSION

COURTHOUSE - ROOM NO. 1
NEOSHO, MISSOURI 64850-1860

PHONE 451-8223 / 451-8208

APR 23 1993

HISTORIC PRESERVATION
PROGRAM

April 19, 1993

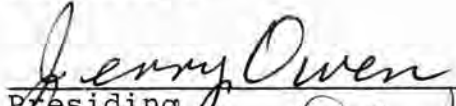
Claire F. Blackwell
Director and Deputy State
Historic Preservation Officer
DEPARTMENT OF NATURAL RESOURCES
Post Office Box 176
Jefferson City, Missouri 65102

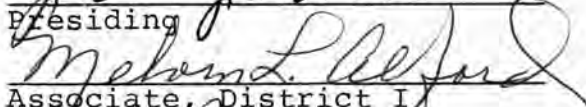
Dear Ms. Blackwell:

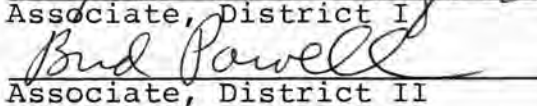
This letter is in response to your letter of April 8, 1993,
and the proposed historic district in Neosho, Missouri.

After reading the letter and giving due consideration to
the invitation, the commission wishes to decline the nomination
at this time.

Sincerely,



Presiding


Associate, District I


Associate, District II

JO/gf

AFFIDAVIT

744 Oak Ridge
Neosho, MO 64850
May 10, 1993

Ms. Claire F. Blackwell
Director and Deputy
State Historic Preservation Officer
Historic Preservation Program
Department of Natural Resources
P. O. Box 176
Jefferson City, MO 65102

RE: 101 103 E. Main, Neosho, Newton County

Dear Ms. Blackwell:

We object to the listing of our property in the National Register. We are sole owners of the building. The building houses McGinty's Dept. Store.

The outside of the building has been altered and is not in its original state.

We are not interested in participating in this project.

Edward McGinty
Edward McGinty

Betty McGinty
Betty McGinty

STATE OF MISSOURI)
) ss.
COUNTY OF NEWTON)

On this 10th day of May, 1993, before me personally appeared Edward McGinty and Betty McGinty, his wife, to me known to be the persons described in and who executed the foregoing Affidavit, and who acknowledged that they executed the same as their free act and deed and for the purposes therein expressed.

IN TESTIMONY WHEREOF, I have hereunto set my hand and affixed my official seal.

Marilyn L. Walker
Marilyn L. Walker, Notary Public

My commission expires:
December 18, 1995.

109 E. Main
Neosho, MO 64850
May 10, 1993

AFFIDAVIT

Ms. Claire F. Blackwell
Director and Deputy State
Historic Preservation Officer
Historic Preservation Program
Department of Natural Resources
P. O. Box 176
Jefferson City, MO 65102

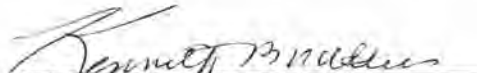
RE: 107-109 E. Main, Neosho, Newton County

Dear Ms. Blackwell:

I object to the listing of my property in the National Register. Geneva Matters is deceased and I am the sole owner of the buildings.

Part of the outside of the buildings have been altered and are not in their original state.


I am not interested in participating in this project.


Kenneth Matters

STATE OF MISSOURI)
)ss.
COUNTY OF NEWTON)

On this 10th day of May, 1993, before me personally appeared Kenneth Matters, to me known to be the person described in and who executed the foregoing Affidavit and acknowledged to me that he executed the same as his free act and deed and for the uses and purposes therein expressed.

IN TESTIMONY WHEREOF, I have hereunto set my hand and affixed my official seal.


Marilyn L. Walker, Notary Public

My commission expires:
December 18, 1995.

MICHAEL R. KELLY

Certified Public Accountant

Member of

The American Institute of Certified Public Accountants

MAY 18 1993

HISTORIC PRESERVATION
PROGRAM

112 North Wood Street
P.O. Box 368
Neosho, Mo. 64850

417-451-2932

Owner

Michael R. Kelly, C.P.A.

Senior Auditor

Jim R. Cummins, C.P.A.

RECEIVED 413

SEP 13 1993

May 13, 1993


Claire F. Blackwell
Historic Preservation Program
Department of Natural Resources
P.O. Box 176
Jefferson City, MO 65102

Please accept this as my objection to the listing of my property in the National Register of Historic Places.

The location of the property is:

112 N. Wood and Parking Lot, Neosho, Newton County, Missouri.

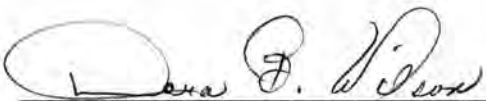
145



Michael R. Kelly

STATE OF MISSOURI
COUNTY OF NEWTON

Subscribed and sworn to me, a Notary Public, in my office in Neosho, Missouri on this 13th day of May, 1993.



Notary Public

DORA B. WILSON
NOTARY PUBLIC STATE OF MISSOURI
NEWTON COUNTY
MY COMMISSION EXP JAN.24,1994