

MAR 08 2011

NPS Form 10-900
(Rev. 10-90)United States Department of the Interior
National Park ServiceNATIONAL REGISTER OF HISTORIC PLACES
REGISTRATION FORM

OMB No. 1024-0018
RECEIVED 2280
MAY 13 2011
NAT. REGISTER OF HISTORIC PLACES
NATIONAL PARK SERVICE

393

This form is for use in nominating or requesting determinations for individual properties and districts. See instructions in How to Complete the National Register of Historic Places Registration Form (National Register Bulletin 16A). Complete each item by marking "x" in the appropriate box or by entering the information requested. If any item does not apply to the property being documented, enter "N/A" for "not applicable." For functions, architectural classification, materials, and areas of significance, enter only categories and subcategories from the instructions. Place additional entries and narrative items on continuation sheets (NPS Form 10-900a). Use a typewriter, word processor, or computer, to complete all items.

1. Name of Property

historic name Hoosier Row Schoolother names/site number Hoosier Row Community Center

2. Location

street & number 15246 R63 Hwy not for publication NA
city or town Indianola vicinity X
state Iowa code IA county Warren code 181 zip code 50125

3. State/Federal Agency Certification

As the designated authority under the National Historic Preservation Act of 1966, as amended, I hereby certify that this x nomination request for determination of eligibility meets the documentation standards for registering properties in the National Register of Historic Places and meets the procedural and professional requirements set forth in 36 CFR Part 60. In my opinion, the property meets does not meet the National Register Criteria. I recommend that this property be considered significant _____ nationally _____ statewide x locally. (_____ See continuation sheet for additional comments.)

Barbara A. Mitchell / DSHPO
Signature of certifying official

May 4, 2011
Date

STATE HISTORICAL SOCIETY OF IOWA
State or Federal agency and bureau

In my opinion, the property _____ meets _____ does not meet the National Register criteria. (_____ See continuation sheet for additional comments.)

Signature of commenting or other official

Date

State or Federal agency and bureau

=====

4. National Park Service Certification

=====

I, hereby certify that this property is:

- ☒ entered in the National Register
 See continuation sheet.
☐ determined eligible for the
 National Register
 See continuation sheet.
☐ determined not eligible for the
 National Register
☐ removed from the National Register
☐ other (explain): _____

Edson H. Beall 6-23-11

Signature of Keeper Date
 of Action

=====

5. Classification

=====

Ownership of Property (Check as many boxes as apply)

- ☒ private
☐ public-local
☐ public-State
☐ public-Federal

Category of Property (Check only one box)

- ☒ building(s)
☐ district
☐ site
☐ structure
☐ object

Number of Resources within Property

Contributing	Noncontributing
<u> 2 </u>	<u> </u> buildings
<u> 1 </u>	<u> </u> sites
<u> 1 </u>	<u> 1 </u> structures
<u> 3 </u>	<u> 1 </u> objects
	<u> 2 </u> Total

Number of contributing resources previously listed in the National Register NA

Name of related multiple property listing (Enter "N/A" if property is not part of a multiple property listing.) NA

=====

6. Function or Use

=====

Historic Functions (Enter categories from instructions)

Cat: education Sub: school

<u></u>	<u></u>
<u></u>	<u></u>
<u></u>	<u></u>
<u></u>	<u></u>
<u></u>	<u></u>
<u></u>	<u></u>

Current Functions (Enter categories from instructions)

Cat: social Sub: meeting hsl

<u></u>	<u></u>
<u></u>	<u></u>
<u></u>	<u></u>
<u></u>	<u></u>
<u></u>	<u></u>
<u></u>	<u></u>

=====

7. Description

=====

Architectural Classification (Enter categories from instructions)

country school

Materials (Enter categories from instructions)

foundation brick

roof asphalt

walls metal/aluminum

other wood

Narrative Description (Describe the historic and current condition of the property on one or more continuation sheets.)

United States Department of the Interior
National Park Service

NATIONAL REGISTER OF HISTORIC PLACES
CONTINUATION SHEET

Section 7

Page 1

Hoosier Row School
Warren County, Iowa

NARRATIVE DESCRIPTION

Two miles west and four miles south of Indianola in Warren County, Iowa, Hoosier Row School sits in a lovely country setting. It is surrounded on the south and west sides by farm fields and on the north by a pasture. A woven wire fence surrounds the property on the south, west and north sides. The school has been the center of the community since 1855. Across the road to the east are two farm homes with barns and outbuildings that complete the tranquil rural setting. As you turn right from R63 and enter the circle drive that takes you to the front of the school, you notice the flagpole and red pump that sit in the center of the circle. The rectangular white building has three identical long narrow windows (33 in. x 7 ½ ft.) on each of the north and south sides. The original windows have a protective aluminum storm window over them. The west side has no openings. The oil tank for the "modern" heating system sits against the west side. There is a flood light in the center of that side. The siding on the building is now narrow aluminum. Aided by a 4-H sesquicentennial grant the White Oak Climbers 4-H club covered the original siding in 1996. The shingles are asphalt. The bell tower still sits majestically on the top. The four square posts decorated with large jigsaw-cut brackets hold the cover over the bell that was installed in 1900. There is a half circle window in the front (east) side below the bell tower.

On the southwest corner of the lot sits the remaining outhouse. One of two built by the Works Progress Administration (WPA), it serves the same purpose as it did originally. There is still no plumbing in the building. The outside of the structure is wood. The floor is concrete as are the two seats. Modern lids have been added.

To enter the school, go up the four cement steps holding the pipe hand rails and enter the porch through the metal storm door. Go through the second door that proudly displays the Iowa Standard School plaque and enter the first small room. That room now holds the refrigerator for the community center. Turn to the right (north) and there is a small room that now serves as a kitchen for the community center. Left from the entry area (south) is a small room that serves as a coat room. The north and south rooms open directly into the main school room. The well maintained hardwood floors run through

United States Department of the Interior
National Park Service

NATIONAL REGISTER OF HISTORIC PLACES
CONTINUATION SHEET

Section 7
Additional Documentation

Page 2

Hoosier Row School
Warren County, Iowa

the entire building. Walk straight into the main school room and you will find yourself back in the 1950's. Most of the items that were in the building when the school closed in 1958 are still there. The chalk boards are on the east and west walls. The pull-down map is between two windows on the south side. The furnace sits in the northwest corner of the room. There are two tables with appropriately sized chairs for the students to recite lessons. There are two bookcases full of books. The original piano and bench are also there. The globe is on the teacher's desk and the original clock is on the east wall above the chalkboards. A visit to this school is a wonderful experience—a step back in time.

=====

8. Statement of Significance

=====

Applicable National Register Criteria (Mark "x" in one or more boxes for the criteria qualifying the property for National Register listing)

- ☒ A Property is associated with events that have made a significant contribution to the broad patterns of our history.
- ☐ B Property is associated with the lives of persons significant in our past.
- ☐ C Property embodies the distinctive characteristics of a type, period, or method of construction or represents the work of a master, or possesses high artistic values, or represents a significant and distinguishable entity whose components lack individual distinction.
- ☐ D Property has yielded, or is likely to yield information important in prehistory or history.

Criteria Considerations (Mark "X" in all the boxes that apply.)

- ☐ A owned by a religious institution or used for religious purposes.
- ☐ B removed from its original location.
- ☐ C a birthplace or a grave.
- ☐ D a cemetery.
- ☐ E a reconstructed building, object, or structure.
- ☐ F a commemorative property.
- ☐ G less than 50 years of age or achieved significance within the past 50 years.

Areas of Significance (Enter categories from instructions)

education _____

architecture _____

Period of Significance 1900 - 1958

Significant Dates 1900 _____

1958 _____

Significant Person (Complete if Criterion B is marked above)

NA

Cultural Affiliation _____

Narrative Statement of Significance (Explain the significance of the property on one or more continuation sheets.)

(Cite the books, articles, and other sources used in preparing this form on one or more continuation sheets.)

recorded by Historic American Engineering Record # _____

— Other

Name of repository: _____

Acreage of Property 1 acre

	Zone	Easting	Northing
1	15	448,336.8	4,572,691.7

Verbal Boundary Description (Describe the boundaries of the property on a continuation sheet.)

Boundary Justification (Explain why the boundaries were selected on a continuation sheet.)

United States Department of the Interior
National Park Service

NATIONAL REGISTER OF HISTORIC PLACES
CONTINUATION SHEET

Additional Documentation Page 3

Hoosier Row School
Warren County, Iowa

8. Narrative Statement of Significance

The Hoosier Row School from 1900 is locally significant under Criterion A as an important example of rural schools in Iowa from the first half of the 20th century. It served as a school from 1900 until 1958 when it closed due to lack of enrollment. It remains an outstanding example of a rural school in Iowa. An archeological investigation was not a part of the nomination. Additional research may identify archeological sites that could contribute to the historical significance of the property. The criterion C case may be made in the future if the siding were to be removed and the original siding remains underneath.

Twelve years after Iowa achieved statehood a bill was introduced into the Iowa Legislature by Josiah B. Grinnell (chairman of the Standing Committee on Schools). Known as the "Public Education for the State of Iowa" bill, this 1858 Legislative Act established a free public school system for the state of Iowa. The civil township was selected as the area for a school district, and incorporated towns of 1,000 or more people became independent districts. These free schools were for the education of students aged 5 to 25 and basically provided elementary education through grade 8. Hoosier Row School was always used for education only through grade 8. Higher education (i.e. high schools) was left up to the incorporated communities with the anticipation that there would be one in each of the 99 counties. Students in the rural areas could attend these centralized high schools if they passed qualifying examinations and if they were willing to provide their own transportation. The 1858 act created the position of County Superintendent of Schools, as well as district (township) boards. The president of the district boards and the County Superintendent made up the County Board of Education. This board provided oversight of the high schools. Hiring of the teachers and selection of curriculum were left in local hands.

In 1851 and 1852 a group of people traveled from Indiana to Iowa and eventually into Warren County. Since the people from Indiana were called Hoosiers they named the new settlement area Hoosier Row. Hoosier Row is a community. These early settlers

United States Department of the Interior
National Park Service

NATIONAL REGISTER OF HISTORIC PLACES
CONTINUATION SHEET

Section 8

Additional Documentation

Page 4

Hoosier Row School
Warren County, Iowa

established homes, built Hoosier Row School and Pleasant Hill Methodist Church and plotted Hewitt Cemetery and Randolph Cemetery. Due to the distance from the school property the cemeteries are not included in this nomination. The church was demolished in 1966. The community was defined by the geographical area of 2 miles around the school. The country schools were placed two miles apart. There were never any stores or a post office in this area.

In 1855 the first Hoosier Row School was built on the same site of the present building. The original building stood until 1900 when the district decided that a new building was needed. Edd Willsey, a neighborhood resident, did the carpenter work. The new building was larger than the original one room school. It had three small areas that were called halls. There is an entry area (6 ft. x 8 ½ in. square), a north area (6 ft. 8 ½ in. x 8 ft. 3 in.) that was used by the boys for a cloak room, and a south area (6 ft. 8 ½ x 8 ft 3 in.) that was the cloak room for the girls. The community decided that they wanted a cupola with a bell. Since there was no money to fund the project the ladies in the community has an ice cream social and all the men donated one dollar. The cost of the bell was soon covered. Every morning at 8:30 the bell rang for 5 minutes. Since none of the neighboring schools had a bell, they would listen for the Hoosier Row bell and start school when it rang. The new school had a coal stove that stood in the middle of the room.

Although the main school building remains basically unchanged, some of the surrounding buildings and equipment have been removed. Originally on the property there was a pony barn. Until the 1940's many of the students would ride their ponies to school and tie them in the pony barn until school dismissed. There was also a building for storing the coal that was needed to heat the building. A merry-go-round stood on the playground for recess fun. It has been moved to the farm across the road from the school. There were originally two outhouses. Only one remains. The porch was enclosed from the

United States Department of the Interior
National Park Service

NATIONAL REGISTER OF HISTORIC PLACES
CONTINUATION SHEET

Section 8
Additional Documentation

Page 5

Hoosier Row School
Warren County, Iowa

original open style in the early 1940's. Through the years the school was modernized with electricity and an oil furnace.

Many people might think the church was the center of the community. It actually was Hoosier Row School. The church was a Methodist church and not all of the residents of the community were Methodist. Every one seemed to have some connection with the school. Even though the main function of the building was education, it was also used for voting, PTA meetings, 4-H club meetings, Farm Bureau meetings and as a community center for potlucks, wedding and baby showers. The school closed in 1958 due too few students. At that time the neighbors formed the Hoosier Row Community center and purchased the property. Today it is still used for many of the same events as it was many years ago. There is still no plumbing. Members still carry water to events. The one remaining outhouse still serves its original purpose.

Research reveals that in 1902 there were 138 one-room rural schools operating in Warren County. Most have been demolished, converted to homes or farm buildings or are vacant and in disrepair. Hoosier Row School is one of three rural schools remaining in Warren County in usable condition. One school building has been moved from its original location and the third has been used as a restaurant.

The integrity of Hoosier Row School is outstanding. The school still sits on its original one acre plot. The design of the school is unaltered. Through the years the building has been maintained and preserved by the members of the community center. Several of the members attended school there. Though some modern changes have had to be made to continue its use and preservation, it is still very much the neighborhood country school of so many years ago. The aluminum siding which covers the original wooden siding was chosen in a narrow width to conform to the original appearance of the building. This was done by the local 4-H club with a sesquicentennial grant. The original windows can be seen through the newer storm windows. The bell tower is unchanged from the 1900 appearance. The building was built in the style of many country schools. This building is representative of the last era of the one room school house. The many original items that remain inside the building and the excellent condition of the building make visiting this property a 1950's experience. The feeling when stepping inside is that the students have just left for the day.

United States Department of the Interior
National Park Service

NATIONAL REGISTER OF HISTORIC PLACES
CONTINUATION SHEET

Section 8

Page 6

Hoosier Row School
Warren County, Iowa



Hoosier Row School - circa 1885

This building is the predecessor to the subject structure in the nomination.

Photo courtesy of Jane Fergades personal collection

United States Department of the Interior
National Park Service

NATIONAL REGISTER OF HISTORIC PLACES
CONTINUATION SHEET

Section 8

Page 7

Hoosier Row School
Warren County, Iowa

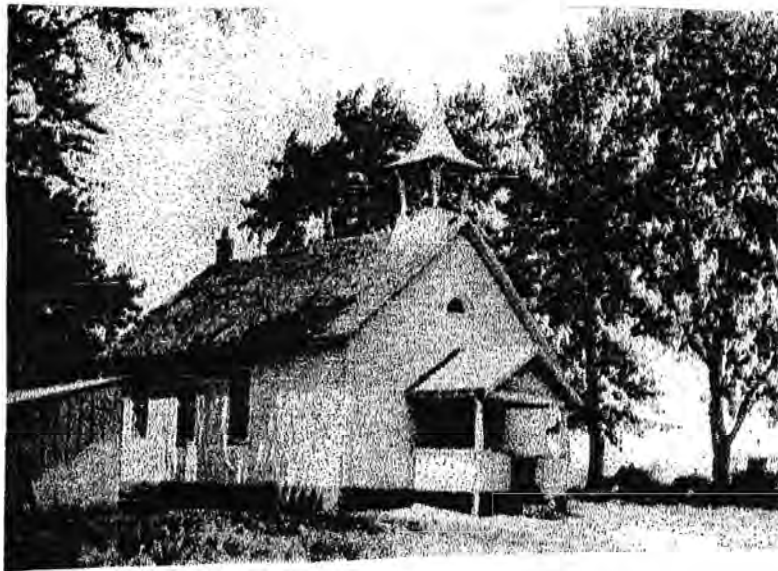


Photo Hoosier Row School - 1932

Shows coal house which is no longer on the property
Photo courtesy of Judy McClymond personal collection

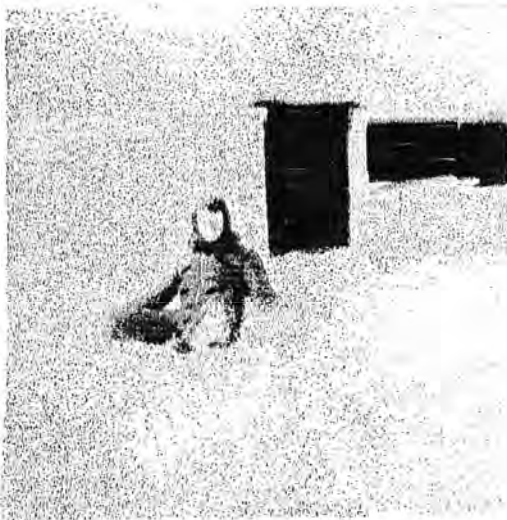
United States Department of the Interior
National Park Service

NATIONAL REGISTER OF HISTORIC PLACES
CONTINUATION SHEET

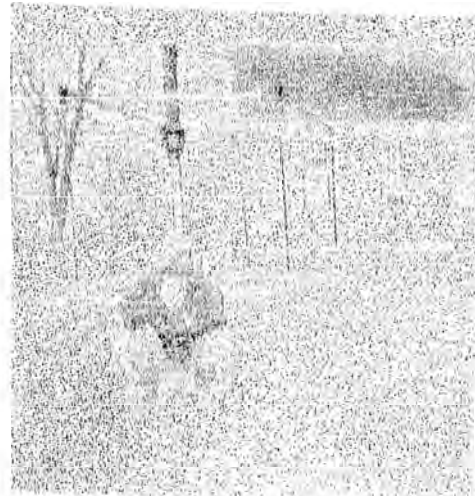
Section 8

Page 8

Hoosier Row School
Warren County, Iowa



Hoosier Row School – 1940's
Student in front of pony barn



Hoosier Row School - 1940's
Students in front of merry-go-round

Photos courtesy of Darrell Putney – personal collection

United States Department of the Interior
National Park Service

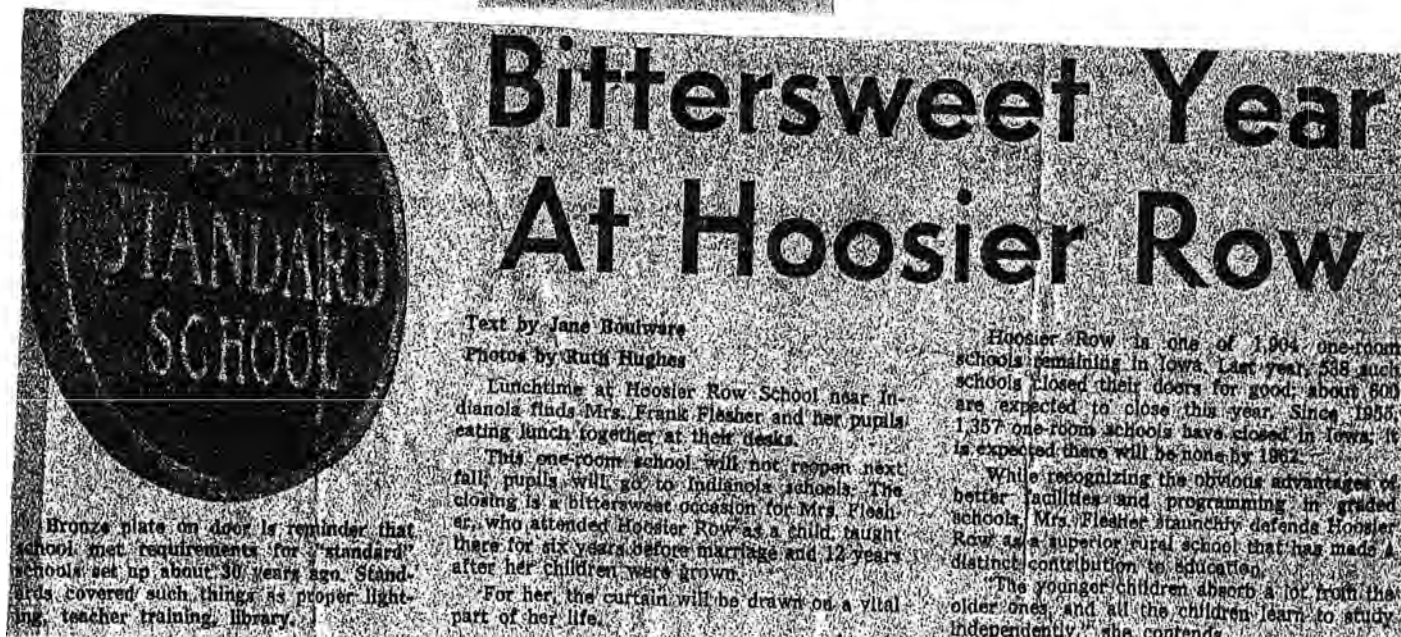
NATIONAL REGISTER OF HISTORIC PLACES
CONTINUATION SHEET

Section 8

Page 9

Hoosier Row School
Warren County, Iowa

Clippings from the Des Moines Tribune, May 1958



United States Department of the Interior
National Park Service

NATIONAL REGISTER OF HISTORIC PLACES
CONTINUATION SHEET

Section 8

Page 10

Hoosier Row School
Warren County, Iowa

Clippings from the Des Moines Tribune, May 1958



Mrs. Frank Flesher eats lunch with her Hoosier Row school pupils.

United States Department of the Interior
National Park Service

NATIONAL REGISTER OF HISTORIC PLACES
CONTINUATION SHEET

Section 8

Page 11

Hoosier Row School
Warren County, Iowa

Clippings from the personal collection of Judy McClymond
Date May 1958



Situated on a knoll on a county road two miles west and four miles south of Indianola, Hoosier Row School with its belfry is a scenic landmark. Built by settlers from Indiana, school was established 75 to 100 years ago, derives its name from the Hoosier state. The building is a community center, used for 4-H, Scout, Farm Bureau and P.-T. A meetings. School will close with a picnic on May 23. Two pupils carry day's supply of water to school.

United States Department of the Interior
National Park Service

NATIONAL REGISTER OF HISTORIC PLACES
CONTINUATION SHEET

Section 8

Page 12

Hoosier Row School
Warren County, Iowa

Clippings from the Des Moines Tribune, May 1958



Mrs. Fletcher, who as Blanche Henson attended Hoosier Row as a child, remembers the winters were "much colder" then. She attended Drake and Simpson. Wife of Frank Fletcher, Indianola carpenter, she plans to retire and travel. The Fletchers have a married daughter in Martinsdale and a son in Elsinore, Cal.



Andy Mattson, 11, a fifth-grade pupil, checks on plans to visit the schoolhouse clock. These sixth-grade girls talk playing the piano as pupils march in and out for recess and lunch, and at beginning and end of school day. School is opened each day with religious reading and Lord's prayer, led by students, and silent to sing. School has electricity, all furniture, hardwood floor, pastel painted walls. Each pupil has his own drinking glass. "Once in a while I paddle." 2004 10-1-58

United States Department of the Interior
National Park Service

NATIONAL REGISTER OF HISTORIC PLACES
CONTINUATION SHEET

Section 8

Page 13

Hoosier Row School
Warren County, Iowa

Clippings from the personal collection of Judy McClymond
Date 1980 Des Moines Register



RURAL AMERICA VOTES

The sun cracked over the horizon at 6:58 a.m. and the 318 citizens of Hoosier Row Precinct in Warren County began to appear to cast their ballots in the 1980 election. Cast in a Grant Wood scene, Ginger Reece appears shortly after 7 a.m. with her son, Adam. The

boy received his first civics lesson as he pulled the lever of his mother's in the voting booth. The former one-room schoolhouse is located 7 miles southwest of Indianola. The first ballot was cast by Hugh Griffin at precisely 7 a.m. The old schoolhouse was closed in 1952.

United States Department of the Interior
National Park Service

NATIONAL REGISTER OF HISTORIC PLACES
CONTINUATION SHEET

Section 9

Page 14

Hoosier Row School
Warren County, Iowa

Major Bibliographical Sources

Aurner, Charles R. History of Education in Iowa, Iowa City: State Historical Society of Iowa, Vol 5., 1914-1920

Boulware, Jane. "Bittersweet Year At Hoosier Row", Des Moines Tribune, May 1958.

Ceolla, George J. "Rural America Votes", Des Moines Tribune, November, 1980.

Deiber, Camilla. Country Schools for Iowa, Hiawatha: J & Al Printing 2002.

Informal Conversations (not true interview) with former students of Hoosier Row School 2009 – 2010.

McClymond, Judy, compiled. Hoosier Row, A History. Unpublished available Box 574, Indianola, Iowa 50125. 2010.

Photographs taken between 1855 – 1958 from personal collections of former students of Hoosier Row.

Richards, Mary Rural Schools of Iowa. A presentation given for fulfillment of a degree at Simpson College, April 2010.

Sherman, William L. Iowa Country Schools Landmarks of Learning. Iowa State Education Association, 1998.

Warren County Genealogical Society, compiled. The History of Warren County, Volume 1. Curtis Media Corporation, 1987.

Warren County Historical Society, Research in records contained in the Historical Society Library, 1850 - 1958.

United States Department of the Interior
National Park Service

NATIONAL REGISTER OF HISTORIC PLACES
CONTINUATION SHEET

Section 10

Page 15

Hoosier Row School
Warren County, Iowa

Verbal Boundary Description:

Warren County Assessors Office

S16-75N-24W S 1A E ¼ NE NE

Boundary Justification:

This is the area historically associated with Hoosier Row School.

United States Department of Interior
National Park Service

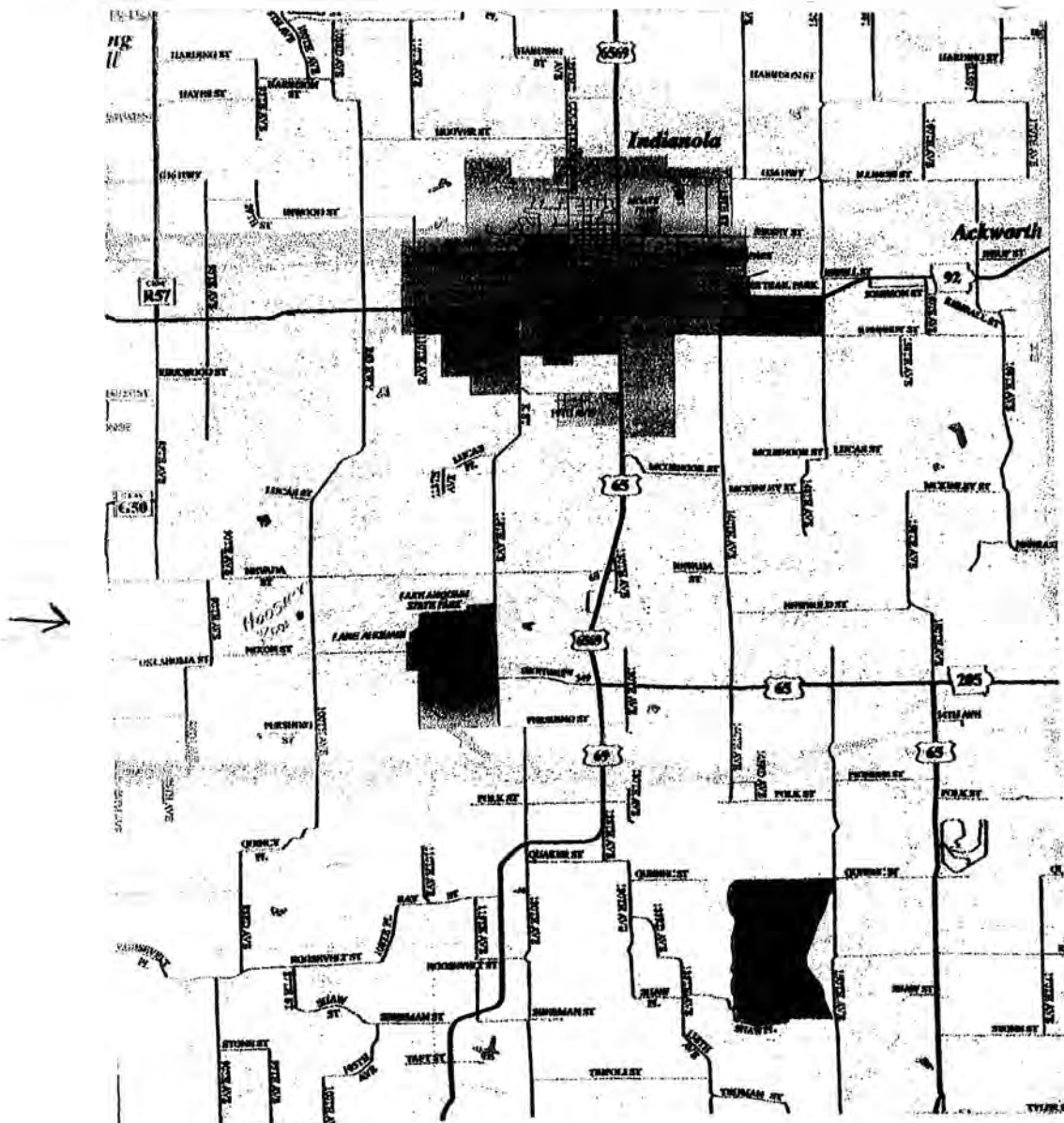
NATIONAL REGISTER OF HISTORIC PLACES
CONTINUATION SHEET

Section 10

Page 16

Hoosier Row School
Warren County, Iowa

Warren County Rural Street Map Printed May, 2008



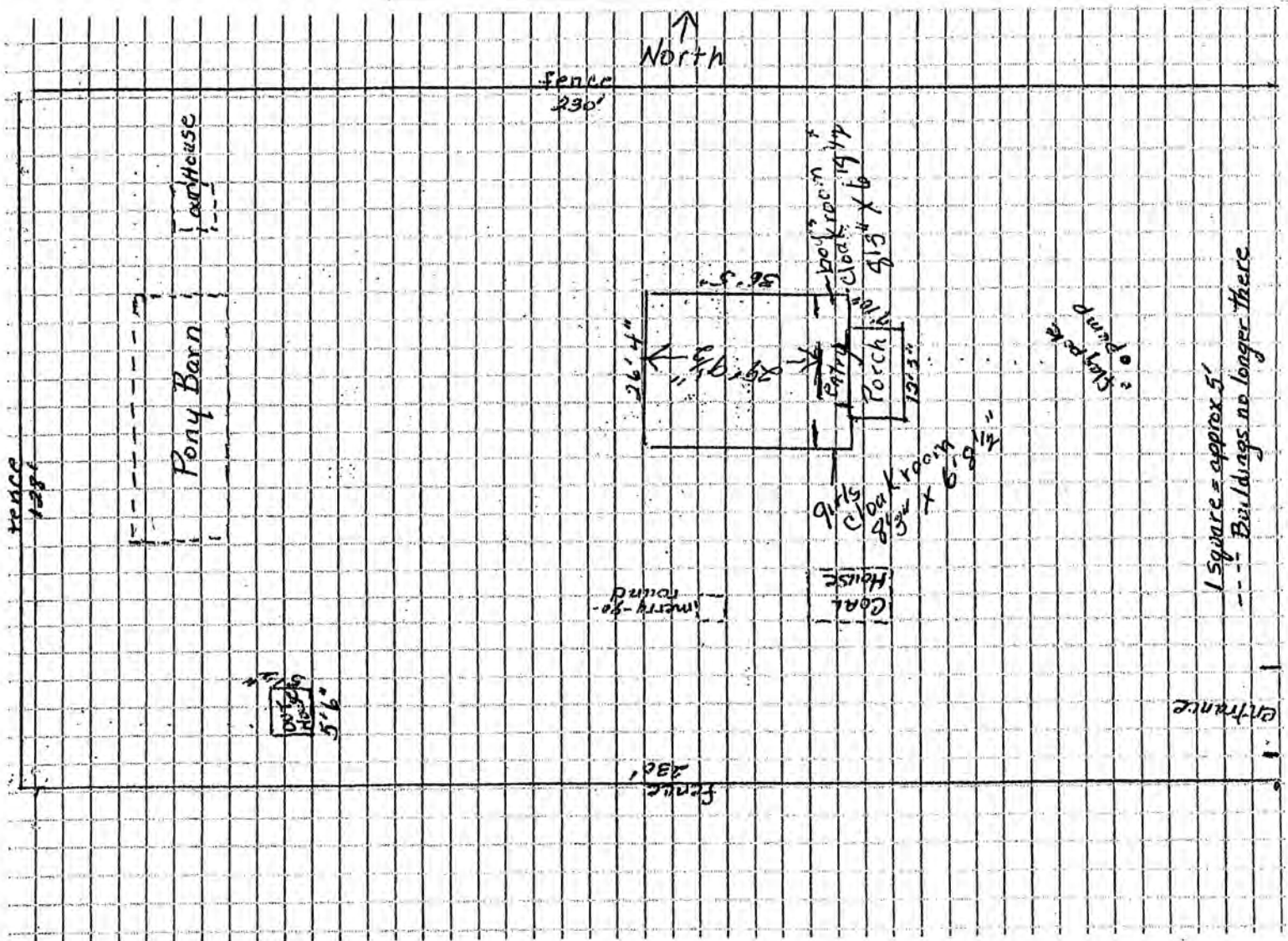
United States Department of the Interior
National Park Service

NATIONAL REGISTER OF HISTORIC PLACES
CONTINUATION SHEET

Section 10

Page 17

Hoosier Row School
Warren County, Iowa



=====

11. Form Prepared By

=====

name/title_Judy McClymond/member_ e-mail address_jkml0403@yahoo.com_

organization_Hoosier Row Community Center_ date_10/1/10_

street & number_Box 574_ telephone_515-961-5624_

city or town_Indianola_ state_Iowa_ zip code_50125_

=====

Additional Documentation

=====

Submit the following items with the completed form:

Continuation Sheets

Maps

A USGS map (7.5 or 15 minute series) indicating the property's location.
A sketch map for historic districts and properties having large acreage
or numerous resources.

Photographs

Representative black and white photographs of the property.

Additional items (Check with the SHPO or FPO for any additional items)

=====

Property Owner

=====

(Complete this item at the request of the SHPO or FPO.)

name_Hoosier Row Community Center_
c/o Gerald Schimmelpfennig, President_

street & number_Box 574_ telephone_515-778-0454_

city or town_Indianola_ state_Iowa_ zip code_50125_

=====

Paperwork Reduction Act Statement: This information is being collected for applications to the National Register of Historic Places to nominate properties for listing or determine eligibility for listing, to list properties, and to amend existing listings. Response to this request is required to obtain a benefit in accordance with the National Historic Preservation Act, as amended (16 U.S.C. 470 et seq.).

Estimated Burden Statement: Public reporting burden for this form is estimated to average 18.1 hours per response including the time for reviewing instructions, gathering and maintaining data, and completing and reviewing the form. Direct comments regarding this burden estimate or any aspect of this form to the Chief, Administrative Services Division, National Park Service, P.O. Box 37127, Washington, DC 20013-7127; and the Office of Management and Budget, Paperwork Reductions Project (1024-0018), Washington, DC 20503.

United States Department of the Interior
National Park Service

NATIONAL REGISTER OF HISTORIC PLACES
CONTINUATION SHEET

Section Photos Page 18

Hoosier Row School
15246 R63 Hwy.
Indianola, Iowa 50125
Warren County, Iowa

Photos 1,2,3 & 4 were taken by Gerald Schimmelpfennig on September 13, 2010.

Photos 5 & 6 were taken by Gerald Schimmelpfennig on September, 24, 2010.

All photos are digital and printed on Epson Premium glossy paper using Epson UltraChrome Hi Gloss 2 ink.

The original CD is with Gerald Schimmelpfennig at 10403 Nevada St., Indianola, Iowa 50125. Images are identified as
IA_WarrenCounty_HoosierRowSchool0001,0002,0003,0004,0005,0006.

000 1 - The photo is taken from the driveway entrance facing northwest.

000 2 - The photo is taken directly in front of the school facing west looking up at the bell tower .

000 3 - The photo is taken facing the southwest corner of the property showing the east and north sides of the outhouse.

000 4 - The photo is taken from the northwest corner of the property looking southeast at the north and west sides of the building.

000 5 - The photo is taken from the east side of the main room facing west.

000 6 - The photo is taken from the west side of the main room looking east toward the side halls.

UNITED STATES DEPARTMENT OF THE INTERIOR
NATIONAL PARK SERVICE

NATIONAL REGISTER OF HISTORIC PLACES
EVALUATION/RETURN SHEET

REQUESTED ACTION: NOMINATION

PROPERTY Hoosier Row School
NAME:

MULTIPLE
NAME:

STATE & COUNTY: IOWA, Warren

DATE RECEIVED: 5/13/11 DATE OF PENDING LIST: 6/08/11
DATE OF 16TH DAY: 6/23/11 DATE OF 45TH DAY: 6/28/11
DATE OF WEEKLY LIST:

REFERENCE NUMBER: 11000393

REASONS FOR REVIEW:

APPEAL: N DATA PROBLEM: N LANDSCAPE: N LESS THAN 50 YEARS: N
OTHER: N PDIL: N PERIOD: N PROGRAM UNAPPROVED: N
REQUEST: N SAMPLE: N SLR DRAFT: N NATIONAL: N

COMMENT WAIVER: N

☒ ACCEPT ☐ RETURN ☐ REJECT 6.23.11 DATE

ABSTRACT/SUMMARY COMMENTS:

**Entered in
The National Register
of
Historic Places**

RECOM./CRITERIA _____

REVIEWER _____ DISCIPLINE _____

TELEPHONE _____ DATE _____

DOCUMENTATION see attached comments Y/N see attached SLR Y/N

If a nomination is returned to the nominating authority, the nomination is no longer under consideration by the NPS.



IA_WarrenCounty_HoosierRowSchool0001



IA_WarrenCounty_HoosierRowSchool0002





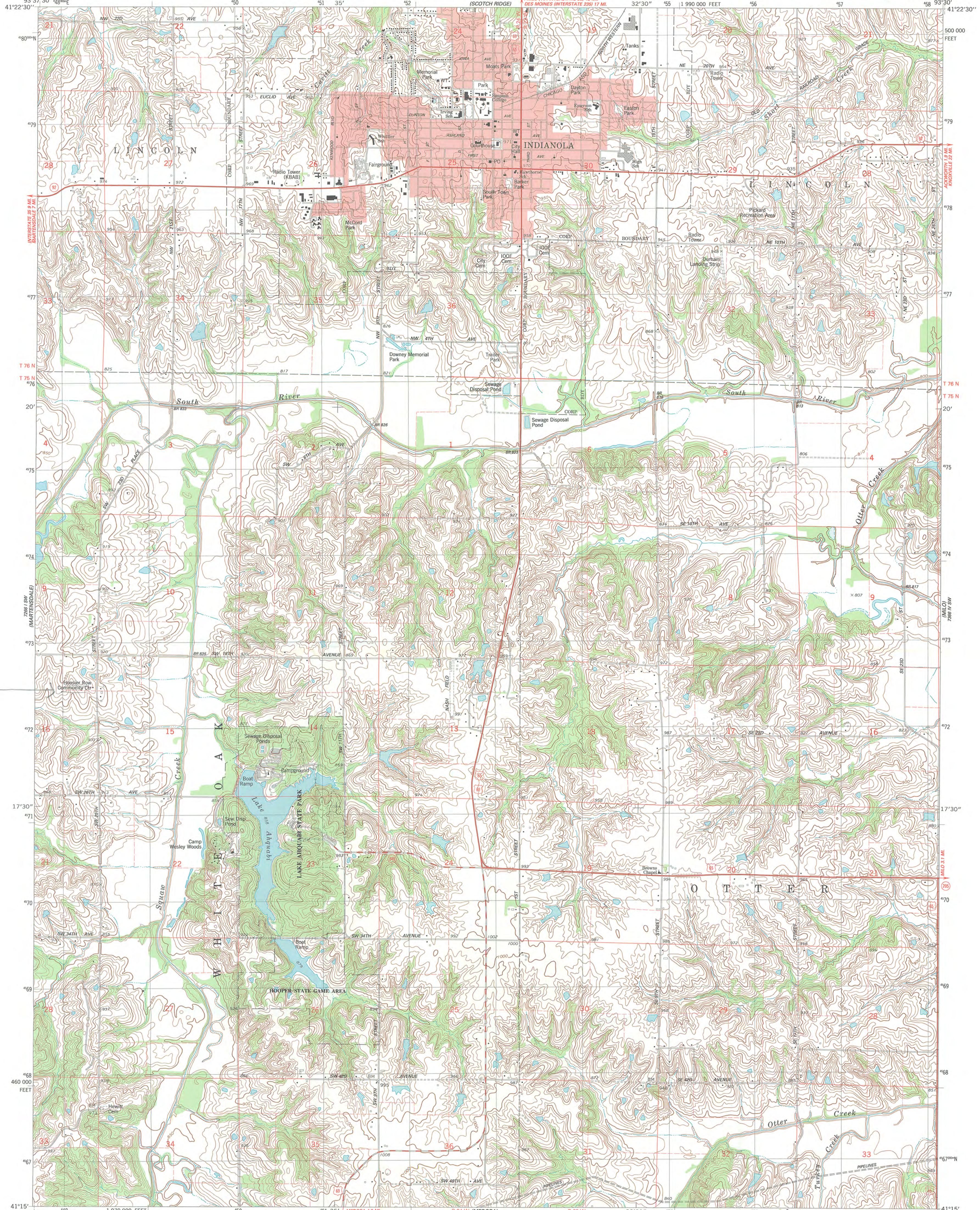
IA_WarrenCounty_HoosierRowSchool0004

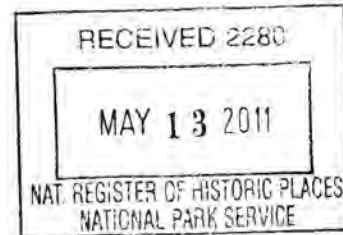


IA_WarrenCounty_HoosierRowSchool0005



IA_WarrenCounty_HoosierRowSchool0006





May 9, 2011

Carol Shull, Chief
National Park Service
National Register of Historic Places
1201 Eye Street, N.W.-- 8th Floor
Washington, D.C. 20005

Dear Ms. Shull:

The following National Register nomination(s) are enclosed for your review and listed if acceptable.

- I.O.O.F. Hall, Dunlap, Harrison County, Iowa
- Hughes-Irons Motor Company, 149-161 W. Broadway, Council Bluffs, Pottawattamie County, Iowa
- Hoosier Row School, 15246 R63 HWY, Indianola vicinity, Warren County, Iowa

Sincerely,

Elizabeth Foster Hill
Tax Incentive Programs Manager/
National Register Coordinator