



BROWN'S ARCADE

322-328 N. CHARLES ST.

BALTIMORE

APRIL 1982

T. BISHOP

Dalsemer, Catzen & Associates, Inc.
121 Water Street at Calvert St.
Baltimore, Maryland 21202

#1 OF 39

EAST ELEVATION



BROWN'S
ARCADE

NO
STOPPING
ANY
TIME

BROWN'S ARCADE

322-328 N. CHARLES ST.

BALTIMORE

APRIL 1982

T. BISHOP

Dalsemer, Catzen & Associates, Inc.
121 Water Street at Calvert St.
Baltimore, Maryland 21202

#2 OF 39

DETAIL OF EAST ELEVATION



BROWN'S ARCADE

322-328 N. CHARLES ST.

BALTIMORE

APRIL 1982

T. BISHOP

Dalsemer, Catzen & Associates, Inc.
121 Water Street at Calvert St.
Baltimore, Maryland 21202

#3 OF 39

ENTRANCE, EAST ELEVATION



BROWN'S ARCADE

322-328 NORTH CHARLES

BALTIMORE, MD.

MAY 1982

T. BISHOP

Dalsemer, Catzen & Associates, Inc.
121 Water Street at Calvert St.
Baltimore, Maryland 21202

#4 OF 39

ARCADE HALL, CAMERA FACING EAST



NO SMOKING

Adonis

BROWN'S ARCADE

322-328 NORTH CHARLES ST.

BALTIMORE, MD.

MAY 1982

T. BISHOP

Dalsemer, Catzen & Associates, Inc.
121 Water Street at Calvert St.
Baltimore, Maryland 21202

#5 OF 39

ARCADE AWAY, CAMERA FACING
EAST



BROWN'S ARCADE

322-328 NORTH CHARLES

BALTIMORE, MD.

MAY 1982

T. BISHOP

Dalsemer, Catzen & Associates, Inc.
121 Water Street at Calvert St.
Baltimore, Maryland 21202

#6 OF 39

ARCADE HALL, CAMERA FACING EAST



BROWN'S ARCADE

322-328 N. CHARLES

BALTIMORE, MD.

MAY 1982

T. BISHOP

Dalsemer, Catzen & Associates, Inc.
121 Water Street at Calvert St.
Baltimore, Maryland 21202

#7 OF 39

ARCADE HALL, CAMERA FACING WEST



BROWN'S ARCADE

322-328 NORTH CHARLES ST.

BALTIMORE, MD.

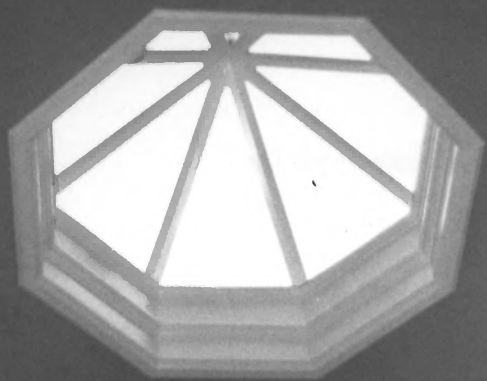
MAY 1982

T. Bishop

Dalsemer, Catzen & Associates, Inc.
121 Water Street at Calvert St.
Baltimore, Maryland 21202

#8 OF 39

ARCADE HALL, CAMERA
FACING WEST



V A F W

BROWN'S ARCADE
322-328 N. CHARLES
BALTIMORE, MD.
DECEMBER, 1981
B. HOFF

Dalsemer, Catzen & Associates, Inc.
121 Water Street at Calvert St.
Baltimore, Maryland 21202

#9 OF 39

ARCADE HALL, DOME



BROWN'S ARCADE

322-328 N. CHARLES

BALTIMORE, MD.

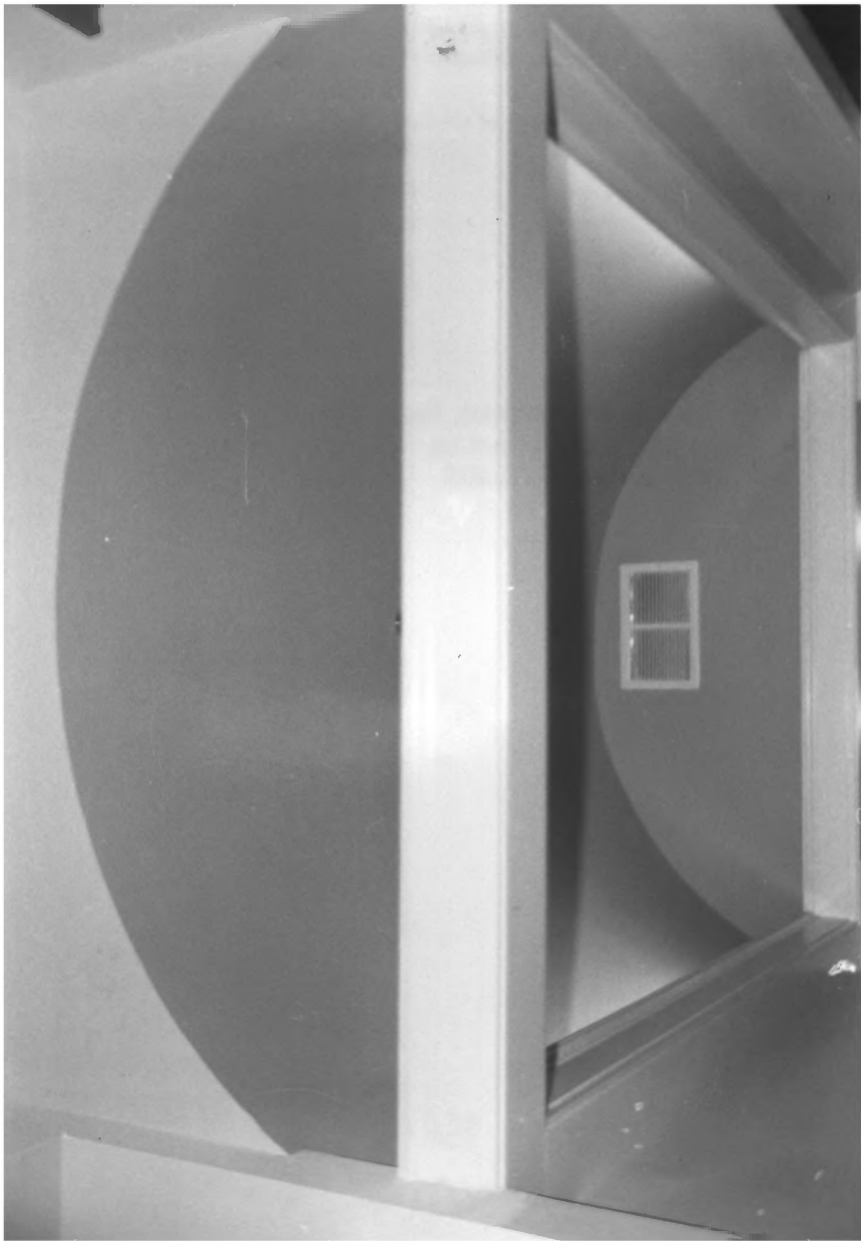
DECEMBER, 1981

B. HOFF

Dalsemer, Catzen & Associates, Inc.
121 Water Street at Calvert St.
Baltimore, Maryland 21202

10 OF 39

ARCADE HALL, NICHE IN ELEVATOR
ENTRY



BROWN'S ARCADE

322-328 N. CHARLES

BALTIMORE, MD.

DEC. 1982

B. HUFF

Dalsemer, Catzen & Associates, Inc.

121 Water Street at Calvert St.

Baltimore, Maryland 21202

#11 OF 39

ARCADE HALL, BARTZELL VAULT
OVER ELEVATOR ENTRY



BROWN'S ARCADE
322-328 N. CHARLES
BALTIMORE, M.D.

DECEMBER, 1981

B. HOFF

Dalsemer, Catzen & Associates, Inc.
121 Water Street at Calvert St.
Baltimore, Maryland 21202

#12 OF 39

TYPICAL SHOP INTERIOR, CAMERA
FACING SOUTH



BROWN'S ARCADE

322-328 NORTH CHARLES

BALTIMORE, MD.

DECEMBER, 1981

B. HOFF

Dalsemer, Catzen & Associates, Inc.
121 Water Street at Calvert St.
Baltimore, Maryland 21202

#13 OF 39

TYPICAL SHOP INTERIOR, CAMERA
FACING EAST



BROWN'S ARCADE

322-328 NORTH CHARLES

BALTIMORE, MD.

DECEMBER, 1981

B. HUFF

Dalsemer, Catzen & Associates, Inc.
121 Water Street at Calvert St.
Baltimore, Maryland 21202

#14 OF 39

TYPICAL SHOP INTERIOR, CAMERA
FACING WEST



BROWN'S ARCADE

322-328 NORTH CHARLES

BALTIMORE, MD

DECEMBER, 1981

B. HOFF

Dalsemer, Catzen & Associates, Inc.

121 Water Street at Calvert St.

Baltimore, Maryland 21202

#15 OF 39

TYPICAL SHOP INTERIOR, CAMERA
FACING SOUTHWEST



BROWN'S ARCADE

322-328 NORTH CHARLES

BALTIMORE, MD.

DECEMBER, 1987

B. HOFF

Dalsemer, Catzen & Associates, Inc.
121 Water Street at Calvert St.
Baltimore, Maryland 21202

#16 OF 39

TYPICAL SHOP INTERIOR, CAMERA
FACING NORTHEAST

Femme



BROWN'S ARCADE

322 - 328 NORTH CHARLES

BALTIMORE, MD.

MAY 1982

T. BISHOP

Dalsamer, Catzen & Associates, Inc.
121 Water Street at Calvert St.
Baltimore, Maryland 21202

#17 of 39

ARCADE HALL, TYPICAL STORE,
CAMERA FACING SOUTHEAST



BROWN'S ARCADE

322-328 N. CHARLES

BALTIMORE, MD.

MAY 1982

T. BISHOP

**Dalsamer, Catzen & Associates, Inc.
121 Water Street at Calvert St.
Baltimore, Maryland 21202**

18 OF 39

ARCADE COURTYARD, CAMERA
FACING SOUTHWEST



BROWN'S ARCADE

322-328 NORTH CHARLES ST.

BALTIMORE, MD.

MAY 1982

T. BISHOP

Dalsemer, Catzen & Associates, Inc.
121 Water Street at Calvert St.
Baltimore, Maryland 21202

19 OF 39

ARCADE COURTYARD, CAMERA
FACING NORTH



BROWN'S ARCADE

322 - 328 N. CHARLES ST.

BALTIMORE

MAY 1982

T. BISHOP

Dalsemer, Catzen & Associates, Inc.
121 Water Street at Calvert St.
Baltimore, Maryland 21202

20 OF 39

ARCADE COURTYARD, CAMERA

FACING NORTHEAST



BROWN'S ARCADE

322 - 328 NORTH CHARLES ST.
BALTIMORE, MD.

MAY 1982

T. BISHOP

Dalsemer, Catzen & Associates, Inc.
121 Water Street at Calvert St.
Baltimore, Maryland 21202

#21 OF 39

RENAISSANCE REVIVAL STOREFRONT,
EAST ELEVATION.



BROWN'S ARCADE
322-328 N. CHARLES
BALTIMORE, MD.

MAY 1982

T. BISHOP

Dalsemer, Catzen & Associates, Inc.
121 Water Street at Calvert St.
Baltimore, Maryland 21202

#22 OF 39

ARCADE COURTYARD, CAMERA FACING
NORTHWEST.



BROWN'S ARCADE

322-328 NORTH CHARLES

BALTIMORE, MD.

B. HOFF

DECEMBER, 1981

Dalsemer, Catzen & Associates, Inc.

121 Water Street at Calvert St.

Baltimore, Maryland 21202

#23 OF 39

REAR OF 324-326, CAMERA
FACING EAST



BROWN'S ARCADE

322-328 NORTH CHARLES

BALTIMORE, MD.

B. HOFF

DECEMBER, 1981

Dalsemer, Catzen & Associates, Inc.

121 Water Street at Calvert St.

Baltimore, Maryland 21202

#24 OF 39

STAIRCASE IN 328, CAMERA
FACING WEST



BROWN'S ARCADE
322-328 NORTH CHARLES
BALTIMORE, M.D.

T. BISHOP

JUNE, 1982

Dalsemer, Catzen & Associates, Inc.
121 Water Street at Calvert St.
Baltimore, Maryland 21202

#25 OF 39

SECOND FLOOR HALLWAY, CAMERA
FACING SOUTH (LABELED UPSIDE DOWN)



BROWN'S ARCADE

322-328 NORTH CHARLES

BALTIMORE, MD.

T. BISHOP

JUNE, 1982

Dalsemer, Catzen & Associates, Inc.

121 Water Street at Calvert St.

Baltimore, Maryland 21202

#26 OF 39

SECOND FLOOR HALLWAY, CAMERA
FACING NORTH



BROWN'S ARCADE
322-328 NORTH CHARLES
BALTIMORE, M.D.

T. BISHOP

JUNE, 1982

Dalsemer, Catzen & Associates, Inc.
121 Water Street at Calvert St.
Baltimore, Maryland 21202

~~#~~ 27 OF 39

THIRD FLOOR HALLWAY, CAMERA
FACING SOUTH



BROWN'S ARCADE

322 - 328 NORTH CHARLES

BALTIMORE, M.D.

T. BISHOP

JUNE, 1982

Dalsemer, Catzen & Associates, Inc.
121 Water Street at Calvert St.
Baltimore, Maryland 21202

28 OF 39

SECOND FLOOR HALL, CAMERA
FACING NORTH



BROWN'S ARCADE

322-32E NORTH CHARLES

BALTIMORE, MD.

B. HOFF

DECEMBER, 1981

NEG: DALSEMER, CATZEN
121 WATER ST
BALTO 21202

#29 OF 39

TYPICAL OFFICE, CAMERA FACING WEST



BROWN'S ARCADE

322-328 NORTH CHARLES

BALTIMORE, MD.

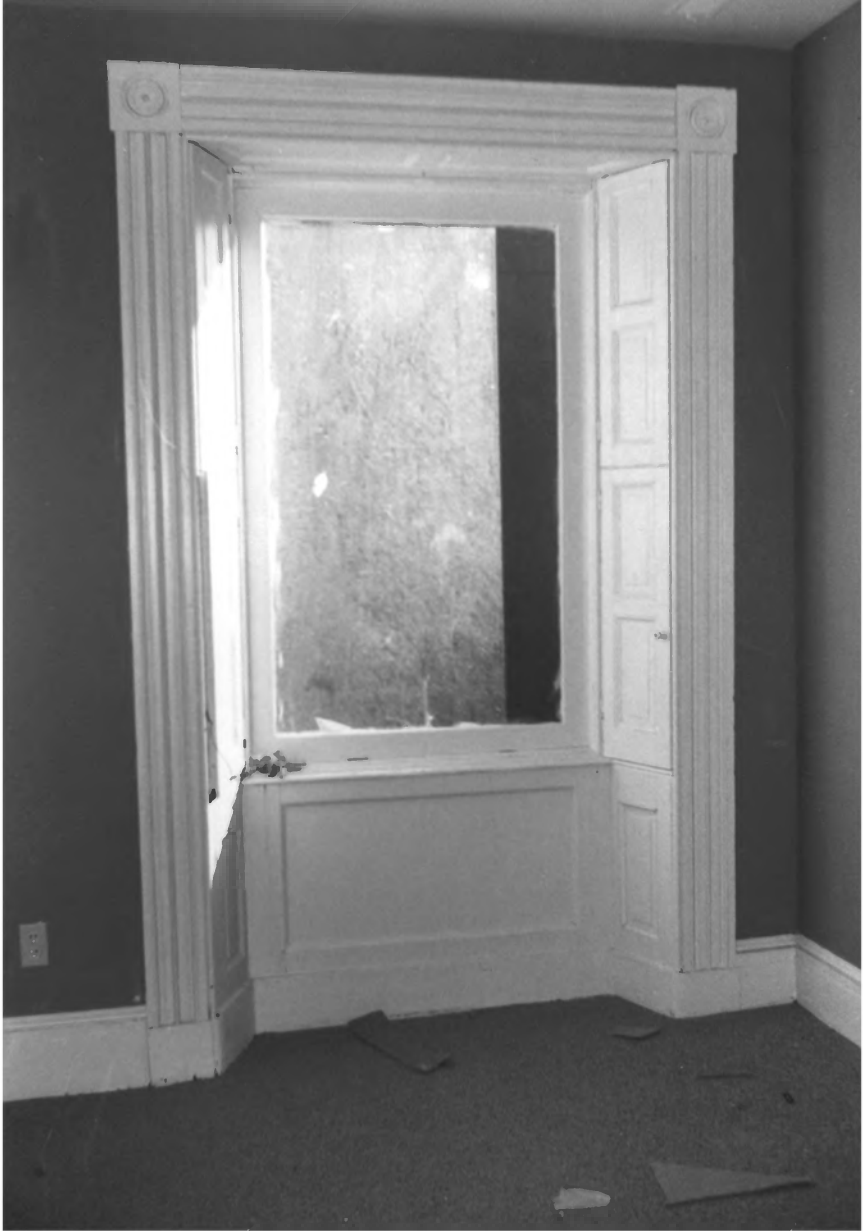
B. NOFF

DECEMBER, 1987

Dalsemer, Catzen & Associates, Inc.
121 Water Street at Calvert St.
Baltimore, Maryland 21202

#30 OF 39

TYPICAL OFFICE, CAMERA FACING
WEST



BROWN'S ARCADE

322-328 NORTH CHARLES

BALTIMORE, MD.

B. HOFF

DECEMBER, 1981

Dalsemer, Catzen & Associates, Inc.

121 Water Street at Calvert St.

Baltimore, Maryland 21202

#31 of 39

TYPICAL OFFICE, CAMERA
FACING EAST



BROWN'S ARCADE

322 - 328 NORTH CHARLES

BALTIMORE, MD.

B. HOFF

DECEMBER, 1981

Dalsemer, Catzen & Associates, Inc.
121 Water Street at Calvert St.
Baltimore, Maryland 21202

#32 OF 39

TYPICAL OFFICE, CAMERA FACING EAST



BROWN'S ARCADE

322-328 NORTH CHARLES

BALTIMORE, MD

B+HFF

DECEMBER, 1981

Dalsemer, Catzen & Associates, Inc.
121 Water Street at Calvert St.
Baltimore, Maryland 21202

#33 of 39

TYPICAL OFFICE, CAMERA FACING
EAST



BROWN'S ARCADE

322-328 NORTH CHARLES

BALTIMORE, MD.

B. HOFF

DECEMBER, 1981

Dalsemer, Catzen & Associates, Inc.
121 Water Street at Calvert St.
Baltimore, Maryland 21202

#34 of 39

TYPICAL OFFICE, CAMERA FACING
EAST



BROWN'S ARCADE

322-328 NORTH CHARLES

BALTIMORE, MD.

B. HOFF

DECEMBER, 1981

Dalsemer, Catzen & Associates, Inc.
121 Water Street at Calvert St.
Baltimore, Maryland 21202

= # 35 OF 39

TYPICAL OFFICE, CAMERA
FACING WEST



BROWN'S ARCADE

322 - 328 NORTH CHARLES ST.,
BALTIMORE, MD.

MAY 1982

T. BISHOP

Dalsemer, Catzen & Associates, Inc.
121 Water Street at Calvert St.
Baltimore, Maryland 21202

36 OF 39

BACK BUILDING OF 322, NORTH ELEVATION,
SECOND AND THIRD STORIES



BROWN'S ARCADE

322-328 NORTH CHARLES

BALTIMORE, MD.

DECEMBER, 1981

B. HOFF

Dalsemer, Catzen & Associates, Inc.

121 Water Street at Calvert St.

Baltimore, Maryland 21202

#37 of 39

REAR OF 322 NORTH CHARLES
CAMERA FACING SOUTHEAST



BROWN'S ARCADE

322-328 NORTH CHARLES

BALTIMORE, MD.

DECEMBER, 1981

B. HUFF

Dalsemer, Catzen & Associates, Inc.
121 Water Street at Calvert St.
Baltimore, Maryland 21202

38 of 39

REAR OF 322, CAMERA FACING
SOUTHEAST



BROWN'S ARCADE
322-328 NORTH CHARLES
BALTIMORE, MD.
DECEMBER, 1981
B HOFF

Dalsemer, Catzen & Associates, Inc.
121 Water Street at Calvert St.
Baltimore, Maryland 21202

#39 OF 39

PARKING GARAGE, CAMERA FACING
SOUTHWEST