



Photo 1.  
"Hermosa"

Midway Historic District  
Woodford County, Kentucky

Dan Kidd

Kentucky Heritage Commission  
Frankfort, Kentucky

February, 1978

NOV 17 1978

MAY 22 1978



Photo 2.

Rogers-Robinson House  
Midway Historic District  
Woodford County, Kentucky

Daniel Kidd

Kentucky Heritage Commission  
Frankfort, Kentucky

February, 1978

NOV 17 1978

MAY 22 1978





Photo 3.

The Andrew Steele House  
Midway Historic District  
Woodford County, Kentucky  
Daniel Kidd

Kentucky Heritage Commission  
Frankfort, Kentucky  
February, 1978

NOV 17 1978

MAY 22 1978



Photo 4.

Former Tollgate House

Cogartown Section

Midway Historic District

Woodford County, Kentucky

Daniel Kidd

Kentucky Heritage Commission

Frankfort, Kentucky

February, 1978

NOV 17 1978

MAY 22 1978



Photo 5.

Cogartown section of the Midway  
Historic District, Woodford County,  
Kentucky.

Photographer facing southwest.

Daniel Kidd

Kentucky Heritage Commission

Frankfort, Kentucky

February, 1978

NOV 17 1978

MAY 22 1978





Photo 6.

Residence of Parrish Hill Farm  
Midway Historic District  
Woodford County, Kentucky

Daniel Kidd

Kentucky Heritage Commission  
Frankfort, Kentucky

February, 1978

NOV 17 1978

MAY 22 1978



Photo 7.

Railroad Street

Photographer facing southeast

Midway Historic District

Woodford County, Kentucky

Daniel Kidd

Kentucky Heritage Commission

Frankfort, Kentucky

February, 1978

NOV 17 1978

MAY 22 1978



Photo 8.  
Railroad Street  
Photographer facing northwest  
Midway Historic District  
Woodford County, Kentucky  
Daniel Kidd  
Kentucky Heritage Commission  
Frankfort, Kentucky  
February, 1978

NOV 17 1978

MAY 22 1978



Photo 9.

Former distillery Warehouse  
Midway Historic District  
Woodford County, Kentucky

Daniel Kidd

Kentucky Heritage Commission

Frankfort, Kentucky

November, 1977

NOV 17 1978

MAY 22 1978





Photo 10.

Main Street

Midway Historic District

Woodford County, Kentucky

Photographer facing southeast

Daniel Kidd

Kentucky Heritage Commission

Frankfort, Kentucky

February 1978

NOV 17 1978

MAY 22 1978



Photo 11.  
Iles House  
Midway Historic District  
Woodford County, Kentucky

Daniel Kidd  
Kentucky Heritage Commission  
Frankfort, Kentucky  
November, 1977

NOV 17 1978

MAY 22 1978



Photo 12.

The McKee Monument  
Midway Historic District  
Woodford County, Kentucky

Daniel Kidd

Kentucky Heritage Commission  
Frankfort, Kentucky  
November, 1977

MAY 22 1978

NOV 17 1978





CITY HALL

TELEPHONE

WATER  
MAIN ST

SPEED  
LIMIT  
25



Photo 13.  
City Hall

Midway Historic District  
Woodford County, Kentucky

Daniel Kidd  
Kentucky Heritage Commission  
Frankfort, Kentucky  
February, 1978

NOV 17 1978

MAY 22 1978



Photo 14.

Left to right;

Porter-Foster House

Nelson House

Branham Hotel

Midway Historic District,  
Woodford County, Kentucky

Daniel Kidd

Kentucky Heritage Commission

Frankfort, Kentucky

November, 1978

NOV 17 1978

MAY 22 1978



Photo 15.  
Former Grocery  
Midway Historic District  
Woodford County, Kentucky

Daniel Kidd  
Kentucky Heritage Commission  
Frankfort, Kentucky  
November, 1977

NOV 17 1978

MAY 22 1978



Photo 15a.

The David Lehman House

Midway Historic District

Woodford County, Kentucky

Daniel Kidd

Kentucky Heritage Commission

Frankfort, Kentucky

February, 1978

**NOV 17 1978**

MAY 22 1978





Photo 16.  
Starks-Hicks House on left,  
Anderson-Mitchell House beyond.  
Midway Historic District  
Woodford County, Kentucky

Daniel Kidd  
Kentucky Heritage Commission  
Frankfort, Kentucky  
February, 1978

**NOV 17 1978**

NOV 22 1978



Photo 17.  
Pinkerton Place  
Midway Historic District  
Woodford County, Kentucky  
Daniel Kidd  
Kentucky Heritage Commission  
Frankfort, Kentucky  
November, 1977 NOV 17 1978

MAY 22 1978



Photo 18.  
Piper House  
Midway Historic District  
Woodford County, Kentucky

Daniel Kidd  
Kentucky Heritage Commission  
Frankfort, Kentucky  
November, 1977

NOV 17 1978

MAY 22 1978





Photo 19.

Richardson-Prewitt House on left  
Harper House on right.

Midway Historic District  
Woodford County, Kentucky

Daniel Kidd

Kentucky Heritage Commission

Frankfort, Kentucky

February, 1978

NOV 17 1978

MAY 22 1978





Photo 20.  
Parrish-Hicks House  
Midway Historic District  
Woodford County, Kentucky

Daniel Kidd  
Kentucky Heritage Commission  
Frankfort, Kentucky  
November, 1977

NOV 17 1978

MAY 22 1978



Photo 21.

Parrish House

Midway Historic District

Woodford County, Kentucky

Daniel Kidd

Kentucky Heritage Commission

Frankfort, Kentucky

February, 1978

NOV 17 1978

MAY 22 1978



Photo 22.

"Fawn Leap"

Midway Historic District

Woodford County, Kentucky

Daniel Kidd

Kentucky Heritage Commission

Frankfort, Kentucky

February, 1978

NOV 17 1978

MAY 22 1978





Photo 23.  
Midway Elementary School  
Midway Historic District  
Woodford County, Kentucky

Daniel Kidd  
Kentucky Heritage Commission  
Frankfort, Kentucky  
November, 1977

NOV 17 1978

MAY 22 1978





Photo 24.  
336 South Winter  
Midway Historic District  
Woodford County, Kentucky

Daniel Kidd  
Kentucky Heritage Commission  
Frankfort, Kentucky  
November, 1977

NOV 17 1978

MAY 22 1978



Photo 25.

From right; Combs House, 316 S.  
Winter, Branham-Evans House,  
Davis-Anderson House.

Midway Historic District  
Woodford County, Kentucky

Daniel Kidd

Kentucky Heritage Commission

Frankfort, Kentucky **NOV 17 1978**

February, 1978

MAY 22 1978



Photo 26.

From left; Nave-Wehrle House  
Hughes-Dedmon-Mitchell House,  
William Lehman House.

Midway Historic District  
Woodford County, Kentucky

Daniel Kidd  
Kentucky Heritage Commission  
Frankfort, Kentucky  
February, 1978

NOV 17 1978

MAY 22 1978



Photo 27.

From right; Utterback-Craig House

Utterback-Lacefield House,

St. Matthew's A.M.E. Church

Midway Historic District

Woodford County, Kentucky

Daniel Kidd

Kentucky Heritage Commission

Frankfort, Kentucky

February, 1978

NOV 17 1978

MAY 22 1978





Photo 28.  
Midway Masonic Building and  
A.M.E. Church  
Midway Historic District  
Woodford County, Kentucky

Daniel Kidd

Kentucky Heritage Commission  
Frankfort, Kentucky

November, 1977

NOV 17 1978

MAY 22 1978



Photo 29.

D. Lehman and Sons Building  
Midway Historic District  
Woodford County, Kentucky

Daniel Kidd

Kentucky Heritage Commission  
Frankfort, Kentucky

November, 1977

**NOV 17 1978**

MAY 22 1978



Photo 30.

Pilgrim Baptist Church

Midway Historic District

Woodford County, Kentucky

Daniel Kidd

Kentucky Heritage Commission

Frankfort, Kentucky

February, 1978

NOV 17 1978

MAY 22 1978



Photo 31.  
Second Christian Church  
Midway Historic District  
Woodford County, Kentucky  
Daniel Kidd  
Kentucky Heritage Commission  
Frankfort, Kentucky  
November, 1977

NOV 17 1978

MAY 22 1978





Photo 32.  
Parrish Hall, Midway College  
Midway Historic District  
Woodford County, Kentucky

Dan Kidd  
Kentucky Heritage Commission  
Frankfort, Kentucky  
November, 1977

NOV 17 1978

MAY 22 1978



Photo 33.  
Pinkerton Hall, Midway College  
Midway Historic District  
Woodford County, Kentucky

Dan Kidd

Kentucky Heritage Commission

Frankfort, Kentucky

November, 1977

NOV 17 1978

MAY 22 1978



Photo 34.  
Midway Woman's Club Building  
Midway Historic District  
Woodford County, Kentucky

Dan Kidd  
Kentucky Heritage Commission  
Frankfort, Kentucky  
February, 1978

**NOV 17 1978**

MAY 22 1978





Photo 35.  
Harper-Fry House  
Midway Historic District  
Woodford County, Kentucky

Dan Kidd  
Kentucky Heritage Commission  
Frankfort, Kentucky  
November, 1977

**NOV 17 1978**

MAY 22 1978





Photo 36.

The Allison House

Midway Historic District

Woodford County, Kentucky

Dan Kidd

Kentucky Heritage Commission

Frankfort, Kentucky

November, 1977

NOV 17 1978

MAY 22 1978



Photo 37  
McReynolds Place  
Midway Historic District  
Woodford County, Kentucky

Dan Kidd  
Kentucky Heritage Commission  
Frankfort, Kentucky  
February, 1978

NOV 17 1978

MAY 22 1978



Photo 38.

South Gratz Street Residence  
Midway Historic District  
Woodford County, Kentucky

Dan Kidd

Kentucky Heritage Commission  
Frankfort, Kentucky

February, 1978

NOV 17 1978

MAY 22 1978



Photo 39.

Midway Christian Church  
Midway Historic District  
Woodford County, Kentucky

Dan Kidd

Kentucky Heritage Commission  
Frankfort, Kentucky  
February, 1978

NOV 17 1978

MAY 22 1978



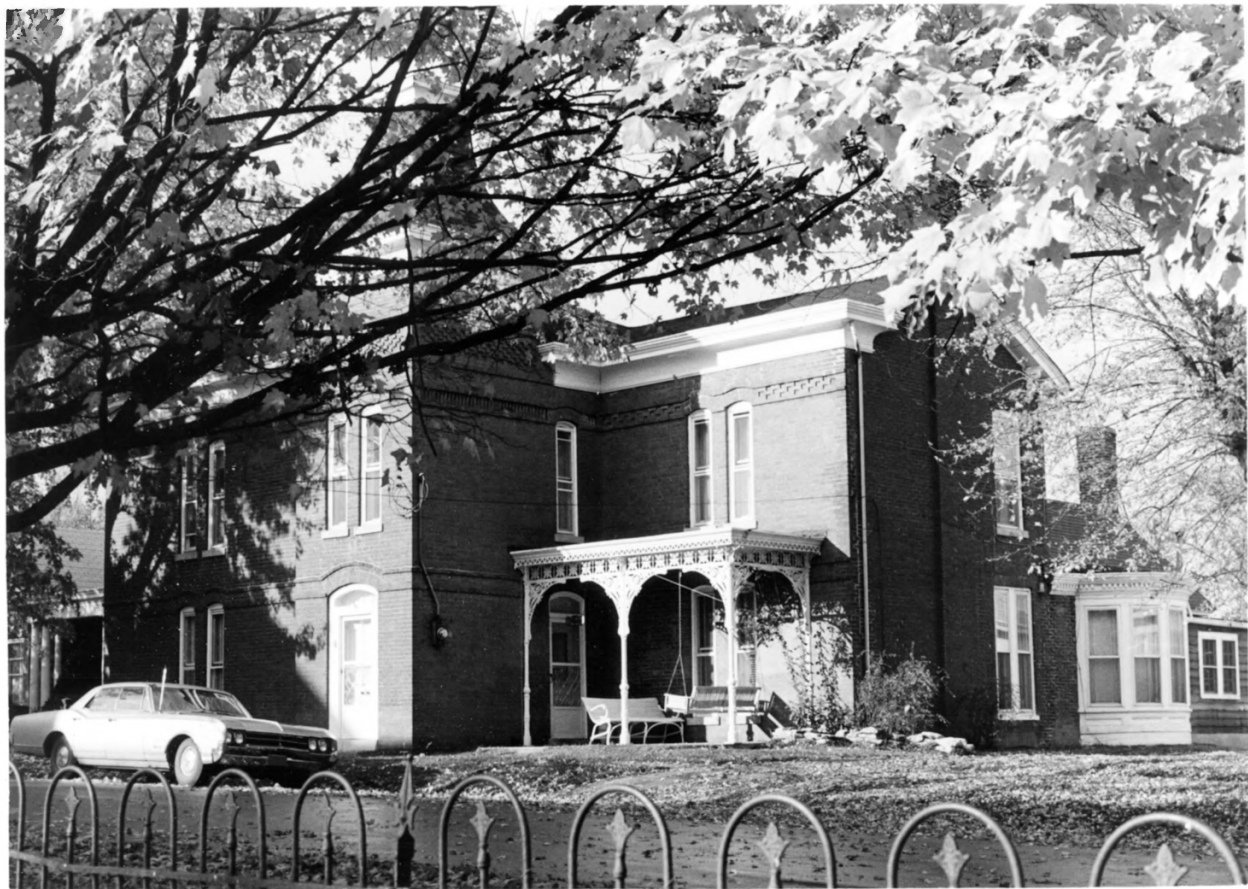


Photo 40.

129 East Bruen

Midway Historic District

Woodford County, Kentucky

Dan Kidd

Kentucky Heritage Commission

Frankfort, Kentucky

November, 1977

NOV. 1-7 1978

MAY 22 1978



Photo 41.

Wehrle Motor Company

Midway Historic District  
Woodford County, Kentucky

Dan Kidd

Kentucky Heritage Commission  
Frankfort, Kentucky

November, 1977

NOV 17 1978

MAY 22 1978



Photo 42.

Workers' Dwellings on West Main

Midway Historic District

Woodford County, Kentucky

Dan Kidd

Kentucky Heritage Commission

Frankfort, Kentucky

November, 1977

MAY 22 1978

NOV 17 1978



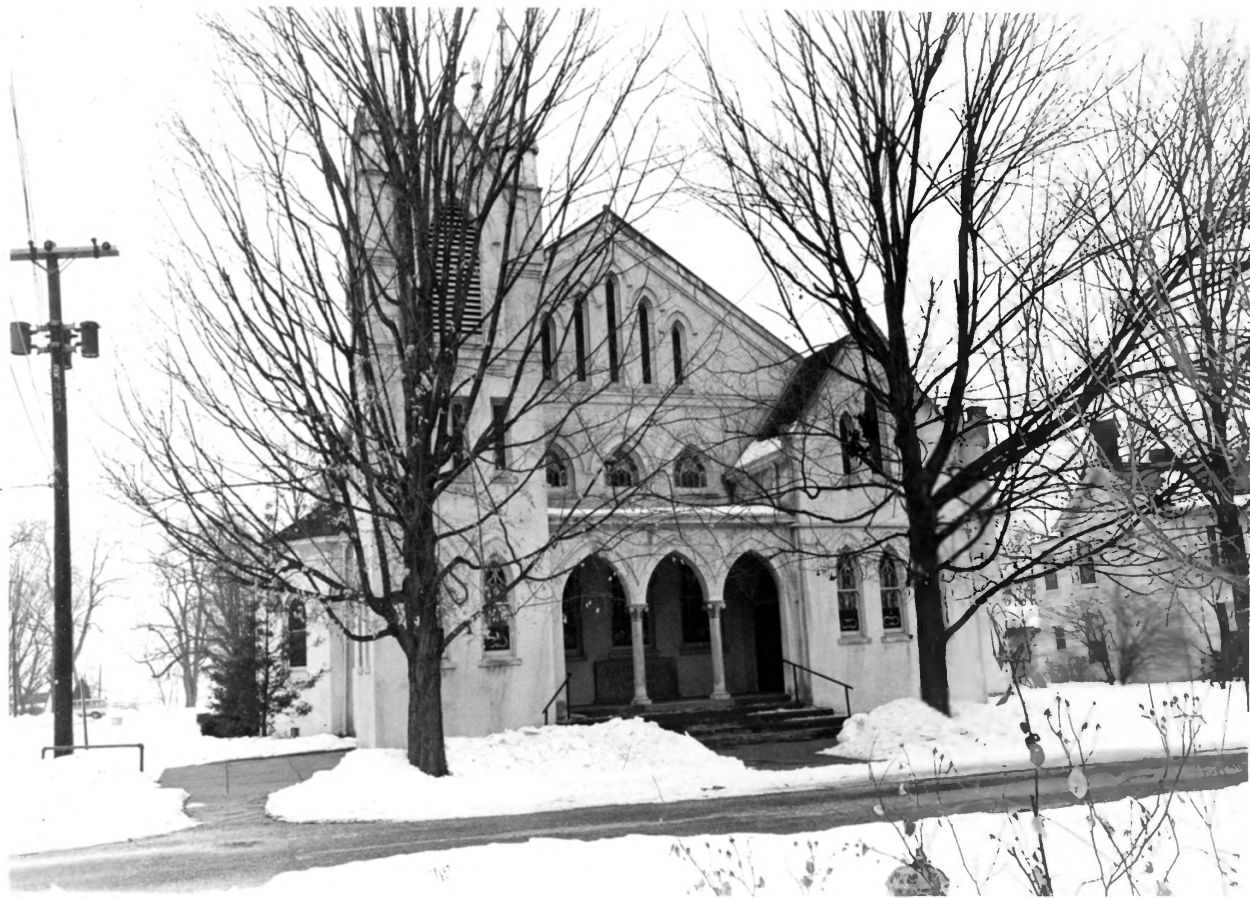


Photo 43.

Midway Presbyterian Church

Midway Historic District

Woodford County, Kentucky

Dan Kidd

Kentucky Heritage Commission

Frankfort, Kentucky

February, 1978

NOV 17 1978

MAY 22 1978





Photo 44.

Turner Street

Midway Historic District

Woodford County, Kentucky

Dan Kidd

Kentucky Heritage Commission

Frankfort, Kentucky

February, 1978

NOV 17 1978

MAY 22 1978



Photo 45.

Turner Street

Midway Historic District  
Woodford County, Kentucky

Dan Kidd

Kentucky Heritage Commission  
Frankfort, Kentucky  
February, 1978

MAY 22 1978

NOV 17 1978



Photo 46.

Givens-Riddle House

Midway Historic District

Woodford County, Kentucky

Dan Kidd

Kentucky Heritage Commission

Frankfort, Kentucky

February, 1978

MAY 22 1978

NOV 17 1978





Photo 47.

"Wincoma"

Midway Historic District  
Woodford County, Kentucky

Dan Kidd

Kentucky Heritage Commission  
Frankfort, Kentucky  
February, 1978

MAY 22 1978

NOV 17 1978





Photo 48.

Bruen Street Dwelling

Midway Historic District  
Woodford County, Kentucky

Dan Kidd  
Kentucky Heritage Commission  
Frankfort, Kentucky  
November, 1977

MAY 22 1978

NOV 17 1978