

United States Department of the Interior
National Park Service

National Register of Historic Places
Continuation Sheet

Section number _____ Page _____

Columbus Historic District

Name of Property

Platte County, NE

County and State

Name of multiple property listing (if applicable)

SUPPLEMENTARY LISTING RECORD

NRIS Reference Number: 96001353

Date Listed: 11/21/1996

Property Name: Columbus Commercial Historic District

County: Platte

State: NE

This property is listed in the National Register of Historic Places in accordance with the attached nomination documentationsubject to the following exceptions, exclusions, or amendments, notwithstanding the National Park Service certification included in the nomination documentation.



Signature of the Keeper

7/15/14

Date of Action

=====

Amended Items in Nomination:

Section 7 Narrative Description

The building located as 2516 13th Street is hereby listed as a contributing resource to the Columbus Commercial Historic District

At the time that the historic district was listed in the National Register façade of this building was covered with non-historic metal panels above the storefront and below the historic metal cornice. With only the historic cornice visible on the façade, the building was listed in the inventory as "NC", non-contributing to the historic district. Recently the non-historic "cover" has been removed, revealing the historic brickwork and window openings with stone windows and sills. It is not evident from the material submitted if the historic sash survive.

The Nebraska State Historic Preservation Office was notified of this amendment.

DISTRIBUTION:

National Register property file

Nominating Authority (without nomination attachment)

NPS Form 10-900
(January 1992)

OMB No. 10024-0018

United States Department of Interior
National Park Service



National Register of Historic Places Registration Form

This form is for use in nominating or requesting determinations for individual properties and districts. See instructions in *How to Complete the National Register of Historic Places Registration Form* (National Register Bulletin 16A). Complete each item by marking "x" in the appropriate box or by entering the information requested. If an item does not apply to the property being documented, enter "N/A" for "not applicable." For functions, architectural classification, materials, and areas of significance, enter only categories and subcategories from the instructions. Place additional entries and narrative items on continuation sheets (NPS Form 10-900A). Use a typewriter, word processor, or computer, to complete all items.

1. Name of Property

historic name Columbus Commercial Historic District
other names/site number N/A

2. Location

street & number See attached map not for publication
city or town Columbus N/A vicinity
state Nebraska code NE county Platte code 141 zip code 68601

3. State/Federal Agency Certification

As the designated authority under the National Historic Preservation Act, as amended, I hereby certify that this nomination request for determination of eligibility meets the documentation standards for registering properties in the National Register of Historic Places and meets the procedural and professional requirements set forth in 36 CFR Part 60. In my opinion, the property meets does not meet the National Register criteria. I recommend that this property be considered significant nationally statewide locally. (See continuation sheet for additional comments.)

Lawrence Sommer 10/17/96
Signature of certifying official/Title Date

Director, Nebraska State Historical Society
State or Federal agency and bureau

In my opinion, the property meets does not meet the National Register criteria.
(See continuation sheet for additional comments.)

Signature of certifying official/Title Date

State of Federal agency and bureau

4. National Park Service Certification

I hereby certify that the property is:
 entered in the National Register. Edson H. Beall 11.21.96
Signature of the Keeper Date of Action

- determined eligible for the National Register. See continuation sheet.
- determined not eligible for the National Register. See continuation sheet.
- removed from the National Register. See continuation sheet.
- other, (explain): _____

Columbus Commercial Historic District, Platte County, Nebraska
Name of Property County and State

5. Classification

Ownership of Property
(Check as many boxes as apply)
the count)

- private
- public-local
- public-state
- public-federal

Category of Property
(Check only one box)

- building(s)
- district
- site
- structure
- object

Number of Resources within Property
(Do not include previously listed resources in

Contributing	Noncontributing	
<u>100</u>	<u>26</u>	buildings
<u>1</u>		sites
		structures
		objects
<u>101</u>	<u>26</u>	Total

Name of related multiple property listing listed

(Enter "N/A" if property is not part of a multiple property listing.)
N/A

Number of contributing resources previously

in the National Register
1

6. Function or Use

Historic Functions
(Enter categories from instructions)

COMMERCE/TRADE: business
GOVERNMENT: city hall; courthouse
DOMESTIC: multiple dwelling
TRANSPORTATION: rail-related
LANDSCAPE: park

Current Functions
(Enter categories from instructions)

COMMERCE/TRADE: business
GOVERNMENT: city hall; courthouse
DOMESTIC: multiple dwelling
TRANSPORTATION: rail-related
LANDSCAPE: park

7. Description

Architectural Classification
(Enter categories from instructions)

Italianate
Romanesque
Classical Revival
Other: Spanish Colonial Revival;
Moderne; Commercial Style; 20th Century Commercial

Materials

(Enter categories from instructions)
foundation STONE
walls BRICK
roof ASPHALT
other TERRA COTTA; STUCCO;
GLASS

Narrative Description

(Describe the historic and current condition of the property on one or more continuation sheets.)

United States Department of the Interior
National Park Service

**National Register of Historic Places
Continuation Sheet**

Section 7 Page 1 Columbus Commercial Historic District, Columbus, Platte County, Nebraska

Section 7 - Description

Columbus, the governmental seat of Platte County, Nebraska is located in the most populated section of the state, the eastern one-quarter. The city, which boasted a population of 19,480 in 1990, is located approximately seventy-eight miles northwest of the state capital of Lincoln.¹ The varied landscape surrounding the community consists of rich bottom land, hills, and flat terrain. Columbus is laid out in a grid pattern, with railroad tracks bisecting the community in a diagonal direction from northeast to southwest. The Loup River flows in a southeasterly direction through the southern portion of the county until it joins the Platte River just outside of the southeastern limits of Columbus.

A majority of the commercial buildings in the district retain their original form and ornamentation in the upper stories. Often, the storefronts and interiors have been altered to accommodate changing businesses. Out of a total of 127 properties in the district, 101 are considered architecturally and historically significant. The twenty-six noncontributing buildings include fifteen that do not meet the fifty year age requirement of the National Register and eleven that meet the age criteria but lack sufficient integrity.

The Columbus Commercial Historic District encompasses an area spanning approximately ten and one-half blocks. The downtown is abutted by residential buildings on every side. While two blocks of the commercial district are located on the south side of the Union Pacific tracks, the remaining eight and one-half blocks developed to the north. The oldest buildings in the district are located on the south side of the tracks and the most recent development occurred along the west end of Thirteenth Street. Thoroughfares in the district include the east-west streets named Eleventh, Twelfth, Thirteenth, and Fourteenth and the north-south avenues named Twenty-third, Twenty-fourth, Twenty-fifth, Twenty-sixth, Twenty-seventh, and Twenty-eighth.

An entire block in the north central portion of the district is Frankfort Park (PT01-132), which contains no buildings. The park, which was established circa 1899, has diagonal sidewalks that extend from each corner and intersect in the center at a war memorial. In 1900, the gray stone monument topped with a metal eagle was dedicated to heroes of the Civil War. Two cannons are positioned on opposite sides of the monument and a chain link fence surrounds the entire display.

¹ Clerk of the Legislature, comp., *Nebraska Blue Book, 1990-1991* (Lincoln, NE, 1990), 857.

United States Department of the Interior
National Park Service

**National Register of Historic Places
Continuation Sheet**

Section 7 Page 2 Columbus Commercial Historic District, Columbus, Platte County, Nebraska

The proposed Columbus Commercial Historic District represents a span of architectural periods ranging from the earliest buildings displaying Italianate features through turn-of-the-century high styles, to modern styles. With the exception of the fringe blocks, the buildings within the district are densely packed, and consist mostly of two-story brick commercial buildings interspersed with several one-story buildings and a few three and four-story examples. While the largest amount of construction in the district during the period of significance (1882 to 1946) took place between 1910 and 1919, the lowest occurred from 1930 to 1946.

The following text outlines the evolution of architectural styles still present in Columbus. Columbus' most prominent styles are introduced under each subheading, as well as defined with descriptions of the best examples in the district. Whenever possible, the highlighted buildings are referred to by their historic names, NeHBS site numbers, and addresses. For information regarding a building's current or historic name, address, contributing/noncontributing status, block number, and construction date please see the property list located in Section 7, page 10. Each building can also be identified on the attached district map and the photograph sheet by cross-referencing addresses.

Italianate

In Columbus, the Italianate style represents one of the most prominent architectural styles in the commercial district. Eleventh and Twelfth streets, which serve as the oldest commercial thoroughfares, exhibit the finest Italianate style buildings in downtown Columbus. The highest number of Italianate buildings are located on the south side of the tracks between Twenty-fourth and Twenty-sixth avenues on Eleventh Street.

The 1882 **J.R. Ernst Building** (PT01-071) at 2501 Eleventh Street is the earliest extant Italianate style building in Columbus. This two-story brick building displays replacement windows and a door on the first floor. A pressed metal string course divides the first and second floors. The second story of the building exhibits tall and narrow segmental arched, two-over-two pane windows with stone sills. Several windows on the east elevation are bricked-in and a metal fire escape is also located on the same side. An elaborate projecting bracketed cornice tops the building. A name plate, which reads "J.R. Ernst 1882" is located directly below the cornice in the center of the facade. In 1996, this building houses a bar/tavern.

United States Department of the Interior
National Park Service

**National Register of Historic Places
Continuation Sheet**

Section 7 Page 3 Columbus Commercial Historic District, Columbus, Platte County, Nebraska

The 1886 **commercial building** (PT01-072) at 2417 Eleventh Street is the only Italianate style building in the district which spans two storefronts. The first floor of the building has been altered with plate glass windows, recessed doorways, and vertical wood signs. Even though the second story windows have been blocked-in and downsized, they retain their original surrounds which include arched hoods with keystones. A decorative string course runs along the top of the second story window hoods. A metal cornice, which includes a centered triangular pediment with the numbers "1886" affixed to it, extends along the upper story of the building. In 1996, this building serves as a clothing store.

The 1891 **J.P. Becker Building** (PT01-090), located at 2502-2504 Twelfth Street, is one of two Italianate style buildings which feature corner entrances. It also is the most elaborate Italianate style building on the north side of the Union Pacific tracks. In comparison to many commercial buildings in Columbus, the J.P. Becker Building's first floor has undergone little alteration with the exception of boarded-up windows. First floor features include cast iron window surrounds, transom, corner entryway, and triangular pedimented window hoods. Continuity in ornamentation is carried out with the use of triangular pedimented hoods over the second story windows. An elaborate bracketed metal cornice tops the south and east elevations. A triangular pediment with finials is located above the canted wall. The name and date of the building is pressed into the metal pediment.

The only extant one-story Italianate style property was constructed in 1892 as the **J.H. Galley Building** (PT01-069). Located at 2505 Eleventh Street, this building exhibits brick construction. A modern wood sign covers much of the facade. A metal cornice, displaying brackets, dentils, finials, and the name "J.H. Galley," ornaments the building. The date "1892" is located on the centered, triangular pediment. In 1996, this building houses an upholstery shop.

The **Henry Block** (PT01-067), constructed circa 1893 at 2523 Eleventh Street, is the oldest business block² in the district. The first floor of the two-story, brick building has been altered with replacement doors and windows. However, the metal work above the openings is still intact. A corner entrance and a double window with a U-shaped hood are set in the canted wall. The second story windows displays segmental arched stone hoods and stone sills. A metal

² "Business blocks" often housed multiple businesses and were viewed as anchors to the commercial center.

United States Department of the Interior
National Park Service

**National Register of Historic Places
Continuation Sheet**

Section 7 Page 4 Columbus Commercial Historic District, Columbus, Platte County, Nebraska

cornice pressed with the date "1886" and the name "Henry" is positioned at the top of the building. The building's west elevation displays a metal fire escape ladder which leads to two single doors, as well as concrete plaster over the lower one-third of the wall. In 1996, a printing shop operates in this building.

Romanesque Revival

Around the turn of the century, two-story retail buildings were erected on the north side of the railroad tracks. These buildings, which were mainly built on the east end of district on Thirteenth Street, resulted from the increased trade in Columbus. Economic prosperity may have encouraged business owners to erect elaborate buildings designed in the Romanesque Revival style of architecture.

One of the earliest extant Romanesque Revival style buildings constructed in Columbus is the 1890 **J.E. North Building** (PT01-126). Located at 2502-2506 Thirteenth Street, this two-story building displays brick construction and a canted wall. The first floor of the building has been altered with plate glass windows, metal awnings, and a large sign. The fenestration in the second story has been blocked-in and a window in the canted wall was replaced with glass block. A stone belt course runs above the window openings and continuous sills connect the windows. Extensive corbeling is located above the second story fenestration. A section of wall along the north facade projects forward slightly and includes large arched lintels and a name plate which reads, "18 J. E. North 90." A stepped parapet tops the front elevation.

The **Abts Grocery Wholesale Building** (PT01-123), constructed circa 1900 at 2318 Thirteenth Street, stands two stories tall. It exhibits polychromatic brick walls with stone ornamentation. The first floor of the building has been completely altered with plate glass windows and doors and a modern metal sign. Arched window hoods are set in groups of three and connected by continuous sills ornament the second floor windows, which have all been enclosed with glass block. Three pilasters, located at the two front corners and in the center, run the height of the building. A crenelated metal and brick cornice is located at the top of the building. In 1996, this building houses an auto supply store.

Built circa 1902 at 2403 Thirteenth Street, the **Herman P.H. Oehrich Building** (PT01-114) was constructed of brick. It stands two-stories tall and extends three bays wide. The first floor has been completely altered with vertical board cladding, plate glass windows, and a setback

United States Department of the Interior
National Park Service

**National Register of Historic Places
Continuation Sheet**

Section 7 Page 5 Columbus Commercial Historic District, Columbus, Platte County, Nebraska

entrance. The second floor has paired arched and single arched windows with arched lintels and a stone belt course. Quatrefoil detailing is located above the arched windows. An overhanging bracketed cornice projects from the top of the building and just below it is ornamental brickwork and a name plate which reads, "Herman P. H. Oehlich." Windows on the east elevation have been blocked-in. A modern one-story addition is located on the south end of the building. This building continues to be used for the sale of merchandise.

One of the most recently constructed Romanesque Revival style buildings in the district is the 1910 **Union Pacific Railroad Depot** (PT01-091). The depot, which exhibits features of the more massive Richardsonian Romanesque design, utilizes polychromatic color schemes, and rough cut stone to reflect massiveness in its construction. The east elevation is rounded with a cone-shaped roof and the west elevation is squared with a double door most likely used for baggage claim. An entrance to the depot is ornamented with a triangular pediment and columns. Many of the windows and doors display rusticated stone surrounds. The building has been altered with downsized and enclosed windows. Stepped parapet walls stand one and one-half stories tall on the north and south elevations. Although this building is no longer used as a passenger depot, it is still owned and utilized by the Union Pacific Railroad.

Neo-Classical Revival

Around the turn of the century, founders of financial institutions began erecting Neo-Classical Revival buildings to house their services. Presenting clients with a sense of stability prompted this design to be popular in Columbus. All of the Neo-Classical Revival designed banks in Columbus were located along the main thoroughfare of Thirteenth Street or within a block off the street. The Platte County Courthouse is the newest and most elaborate Neo-Classical Revival style building located in downtown. It was listed on the National Register in 1990.

The circa 1885 **First National Bank** (PT01-092), located at 1251 Twenty-sixth Avenue, displays variegated brick construction. The first floor of the building includes rusticated brick, an arched pedimented entryway, and brick lintels with keystones. Windows on both floors of the building have been downsized. Three belt courses ornament the building's elevations. A projecting cornice tops the building and a parapet extends along the roofline. In 1996, the building accommodates several different businesses and provides them with separate entrances.

United States Department of the Interior
National Park Service

**National Register of Historic Places
Continuation Sheet**

Section 7 Page 6 Columbus Commercial Historic District, Columbus, Platte County, Nebraska

The **Gray's Building/Farmer's State Bank** (PT01-107), located at 2501 Thirteenth Street, was originally constructed in 1888 and completely remodeled in 1917 when it was purchased by the Farmer's State Bank. It stands two-stories tall and was constructed of smooth stone. The first floor features a curvilinear broken pediment over the entrance. Pilasters, ornamented with light sconces, line the building's corners. A cornice with dentils and modillions runs below the parapet. Modern replacement windows are located throughout the building. The east wall is clad with either stucco or Dryvit.³ In 1996, this building is occupied by the Columbus Bank and Trust Company.

The 1905 **Columbus State Bank** (PT01-102) is located at 2601 Thirteenth Street. This building has been joined with 2603 Thirteenth Street to serve as Conservative Savings Bank. Although both buildings were constructed during the same decade and display similar cornices and window hoods, they historically accommodated different businesses. The first floor of this brick building has been altered with plate glass windows, blocked-in windows, a corner entrance, and metal signs. Original features include rusticated brick on the east elevation and lintels with keystones on first and second story window openings. A belt course is located below the windows on the north and east elevations. A cornice with scroll-shaped brackets and a parapet ornament the crown of the building.

The 1920-1921 **Platte County Courthouse** (PT01-001), which is the largest example of this style in the district, displays smooth Bedford limestone on the upper floors and rusticated stone on the first floor. Triangular pedimented entrances provide access into the buildings. Two story Ionic columns extend from the second to the third floor. A parapet runs along the top of the building. Two plates located on the south elevation read, "PLATTE COV[U]NTY COV[U]RT HOV[U]SE" and "ERECTED BY THE PEOPLE OF THE COV[U]NTY ANNO DOM. 1920." A 1974-1977 concrete two-story noncontributing addition is located on the west facade of the courthouse. In 1990, the Platte County Courthouse was individually listed on the National Register.

Spanish Colonial Revival

Two buildings in the commercial district display Spanish Colonial Revival style. Even though

³ Dryvit is a modern, stucco-like material.

United States Department of the Interior
National Park Service

**National Register of Historic Places
Continuation Sheet**

Section 7 Page 7 Columbus Commercial Historic District, Columbus, Platte County, Nebraska

this style of architecture was not heavily utilized in commercial construction in Nebraska, it is often represented by one or two buildings in commercial areas across the state. The Columbus district includes two examples of this style. While one of the buildings is the only residential property in the district, the other was designed for entertainment--an industry which often used ornate styles to entice customers.

The **Swan Theater** (PT01-097), constructed in 1916 at 2707 Thirteenth Street, displays a blonde brick facade. This building spans three bays in width. Plate glass windows, a wood shingle awning, and tile change the original appearance of the first floor. Even though the second floor windows have been bricked-in, they still retain arched hoods. A curvilinear parapet, which runs along the roofline, is ornamented with porthole windows. In 1996, the Swan Theater houses an antique mall.

The circa 1937 **Schmid Apartment Building** (PT01-144), located at 2805 Fourteenth Street, exhibits a red tile mansard roof. The walls of the two-story building are clad with brown brick. The building was designed in an ell-shaped plan. Windows on both floors are placed in sets of two and three. Deep set arched windows positioned over semicircular pedimented entryways provide the most ornamentation to the elevations. A thirty-foot brick smoke stack rises from the rear corner of the building. This building still serves its original function as an apartment complex.

Twentieth Century Commercial Vernacular

Twentieth century commercial vernacular design was widely used in the early decades of the 1900s. Since these years paralleled the period of the highest commercial construction in Columbus, a large number of buildings on the north side of the Union Pacific tracks display this style. A majority of the retail and production-oriented buildings constructed after the turn of the century utilized the twentieth century commercial vernacular form. This design was extremely popular in small town commercial centers across the Midwest.

The three-story **Poesch Building** (PT01-128), erected in 1911 at 2524 Thirteenth Street, is an excellent example of twentieth century commercial vernacular form. This brick-constructed building displays a first floor altered with vertical wood siding, plate glass windows, and a metal awning. The upper stories include a belt course and continuous sills. A parapet includes a name plate which reads, "19 Poesch 11."

United States Department of the Interior
National Park Service

**National Register of Historic Places
Continuation Sheet**

Section 7 Page 8 Columbus Commercial Historic District, Columbus, Platte County, Nebraska

The **Evans Hotel** (PT01-131), constructed in 1913 at 1354 Twenty-seventh Avenue, exhibits variegated brick construction and extends four-stories tall and three-bays wide. Rusticated brick adorns the first floor of the building. A modern wood shingle awning divides the first and second floors. The building's fenestration consists of single and double placed windows. The second and third floor windows display concrete sills. The first and fourth floors exhibit concrete belt courses. A concrete name plate and cornice are located below the parapet, which is ornamented by a semi-circular pediment. In 1996, a variety of businesses operate in the Evans Hotel.

The 1924 **Henry Gass Building** (PT01-110), located at 1263 Twenty-fifth Avenue, displays painted brick construction. Pilasters are located on the west elevation. The first floor exhibits a modern garage door, plate glass windows, a metal awning and a transom. Corbeling, concrete sills, and a name plate ornament the second floor. The roofline of the building features a stepped parapet.

The 1917 **Phillips' Block** (PT01-099) at 1266 Twenty-seventh Avenue stands two-stories tall and displays brick construction. It accommodates three storefront bays with the northern bay covered by a metal awning. The first floor has been altered with plate glass windows and sheet metal placed over a portion of the art glass transoms. The second floor exhibits three single doors leading to iron rail decks and concrete window sills. A cornice with dentils runs along the top of the building.

Modern Broad-Front

Modern broad-front buildings were later commercial vernacular additions to the commercial district. Since this building type was conducive to the needs of the automobile industry, it was often used in the design of automobile dealerships and service garages. This was especially suitable to Columbus because the Lincoln Highway traversed through downtown.

The **Lincoln Highway Garage** (PT01-122), which was constructed in 1915 at 2304 Thirteenth Street, is a fine example of a modern broad-front building. This one-story building displays blonde brick construction. The garage has been altered slightly with enclosed window and door openings, as well as replacement windows with thin mullions. Concrete plaques with the word "Garage" are affixed to the building above the garage doors on the south and east elevations. A

United States Department of the Interior
National Park Service

**National Register of Historic Places
Continuation Sheet**

Section 7 Page 9 Columbus Commercial Historic District, Columbus, Platte County, Nebraska

concrete parapet and string course is located at the top of the building. This building has continually served as an automotive station.

Chicago Commercial

The Chicago Commercial style of architecture was utilized in the construction of several of the largest retail businesses in Columbus. This style, which is rooted in steel frame technology, accommodated larger businesses in need of expansive floor space and wider window and door openings. Since this was a later style used in the district, the west end of the district along Thirteenth Street exhibits the only examples of the style.

The 1918 **Phillips and Friedhof Building** (PT01-098), located at 1268-1270 Twenty-seventh Avenue, is a representative example of Chicago Commercial style. This brown brick building stands two and one-half stories tall, which includes a mezzanine between the first and second floors. The first floor displays glazed terra cotta panels, large plate glass windows, and a recessed entryway. Between the two full floors resides a row of art glass windows hooded by a section of brick and terra cotta designed in rectangular-shapes. Bands of windows on the second floor reside above the brickwork. A projecting cornice with brackets and a terra cotta ornamented parapet lines the top of the building.

Another prominent example of the Chicago Commercial style with a more vernacular influence is the **Gottberg Garage** (PT01-003). Built in 1921 at 2801 Thirteenth Street, the brick-skinned building stands two stories tall. It features plate glass showroom windows on the first floor elevation and bands of smaller windows on the second story elevation. Decorative brickwork visually divides the two stories and pilasters separate the fenestration. Two parallel molded belt courses run along the top of the building. Above the belt course on the south elevation is a name plate which reads, "Gottberg Auto Company." The parapet exhibits terra cotta replicas of the front end of an automobile. The grill of the "car" is adorned with the letter "G."

Modern

The modernistic period of architecture is represented in the Columbus Commercial Historic District with several related styles. Art Deco and the slightly later style of Art Moderne were used in the design of several of the district's most recently constructed buildings.

United States Department of the Interior
National Park Service

**National Register of Historic Places
Continuation Sheet**

Section 7 Page 10 Columbus Commercial Historic District, Columbus, Platte County, Nebraska

The 1926 Art Deco style **Columbus Theater** (PT01-125), located at 2408 Thirteenth Street, stands two-stories tall. The first floor of the building is covered with Carrara glass. Three sets of glass double doors provide access into the lobby. A double door, covered by a streamlined metal awning, is located on the west end of the facade. Two glass display cases, which hold movie posters, line each side of the main entrance. The upper floor is clad with narrow brick and finished at the top with a stone string course. The terra cotta relief and neon marquee project from the flat surface of the remainder of the facade. The relief covers approximately the central one-third of the upper story and depicts the interaction of Christopher Columbus with Native Americans. The word "Columbus" is etched in the top of the work. Pilasters, finials, and organic details ornament the relief. The neon sign, which extends over the sidewalk from the center of the building, is triangular shaped with curved corners and the displays the name "Columbus" on two sides.

The circa 1914 **Columbus Candy Kitchen** (PT01-103) was erected at 2513 Thirteenth Street. This building's facade was apparently remodeled in the late 1920s with the existing Art Moderne facade. It stands two-stories tall and displays a stone, stepped facade, giving the building a strong vertical line. Plate glass windows and a recessed doorway consumes a majority of the first floor. An entryway, which leads to the second floor, is located on the west side of the facade. Carrara glass and a curved metal streamlined awning ornaments the door. A metal string course serves as a visual divider between the two stories. Stepped window surrounds and carved detailing break up the flat surface on the upper floor.

The **Columbus City Hall** (PT01-140) located at 2522 Fourteenth Street was erected in 1935. It is located to the east of the Platte County Courthouse, across Twenty-fifth Avenue. This two-story brown brick building exhibits a horseshoe-shaped plan. The north wing of the complex displays garage doors on the west elevation indicating its use as a fire station. The flat front elevation is interrupted by layered pilasters located on both sides of the doorways. Stepped pediments are located directly above the entryways. Concrete door surrounds duplicate the shape of the stepped pediments. Concrete sills line both the first and second story windows. A large brick smoke stack rises from the center of the building. This building has been converted from the city hall into a senior citizens center.

In summary, Columbus' downtown exhibits a cohesive built-environment, as well as a flourishing retail industry. Buildings located in the district continue to thrive economically, as well as house a variety of businesses. The physical fabric of the Columbus Commercial Historic

United States Department of the Interior
National Park Service

**National Register of Historic Places
Continuation Sheet**

Section 7 Page 11 Columbus Commercial Historic District, Columbus, Platte County, Nebraska

District represents a broad span of architectural styles. While the most popular styles and forms erected in the city were Italianate and twentieth century commercial vernacular, other styles such as Romanesque Revival, Neo-Classical Revival, Spanish Colonial Revival, Art Deco, and Art Moderne were also used in the design of downtown buildings. This collection of properties serves as a tool to understand the commercial development of the community. Furthermore, the variety of resources, building types, and construction dates identified in the district mirror the architectural evolution of a typical commercial center in east central Nebraska. It is a well-preserved example of a late nineteenth and early twentieth century commercial district in eastern Nebraska.

The following table is a list of properties located in the Columbus Commercial Historic District, Columbus, Platte County, Nebraska.

Contributing Properties: 101
Noncontributing Properties: 26
Total Resources: 127

NeHBS Site No.	Address	Historic Name	Common Name	Status	City Blk #	Date
PT01-489	2401-2405 11th St.	Phillips' Bldg.	Double T Bar	C	117	1905
PT01-488	2407 11th St.	Leavy Drug Store	The Hair Loft	C	117	ca. 1902
----	2407.5 11th St.	Outbuilding	Outbuilding	C	117	ca. 1902
PT01-487	2409 11th St.	Marty Meat Market	Tom's Country Music Store	C	117	ca. 1899
PT01-486	2411 11th St.	Globe Savings & Loan Association	Buss Auction Realty Co.	C	117	1920
PT01-073	2413 11th St.	I. Gluck Bldg.	I. Gluck Bldg.	C	117	1891
PT01-072	2417 11th St.	Commercial Bldg.	Bordy's Clothing	C	117	1886

United States Department of the Interior
National Park Service

**National Register of Historic Places
Continuation Sheet**

Section 7 Page 12 Columbus Commercial Historic District, Columbus, Platte County, Nebraska

PT01-485	2419 11th St.	Greisen Bros. Clothing	Commercial Bldg.	C	117	ca. 1893
PT01-484	2421 11th St.	Roth Leitner & Co. Hardware	Greiner's Carpet Plus	C	117	ca. 1885
PT01-071	2501 11th St.	J. Ernst Bldg.	Chooch's Corner	C	118	1882
PT01-070	2503 11th St.	A. Vogel Bldg.	11 St. Barber	C	118	1892
PT01-069	2505 11th St.	J.H. Galley Bldg.	Foxes Upholstery	C	118	1892
PT01-481	2507 11th St.	Froemel Jeweler	Held Heating	C	118	ca. 1913
PT01-480	2509 11th St.	Eschler Billiards	Columbus Taekwondo	C	118	ca. 1914
PT01-479	2511 11th St.	Helphand Dry Goods	11th St. 2nd Hand Sales	C	118	ca. 1913
PT01-478	2513-2515 11th St.	Chicago Store	Commercial Bldg.	C	118	ca. 1913
PT01-477	2517 11th St.	Columbus Army & Navy Store	Commercial Bldg.	C	118	ca. 1923
PT01-476	2519 11th St.	Restaurant	Hadley Braithwait Co.	C	118	ca. 1909
PT01-475	2521 11th St.	Herchenhan Bldg.	Tip Top Bar	C	118	ca. 1909
PT01-067	2523 11th St.	Henry Block	Copy Cat Printing	C	118	ca. 1893
PT01-090	2502-2504 12th St.	J.P. Becker Bldg.	Commercial Bldg.	C	84	1891
PT01-473	2506 12th St.	Snell Billiard Parlor	Micek Bar	C	84	1905
----	2508 12th St.	Commercial Bldg.	Leonard Barber Shop	NC	84	ca. 1909
----	2510-2512 12th St.	Brown Saloon	Midwest Glass Service	NC	84	ca. 1902
----	2514 12th St.	Home Restaurant	Midwest Glass Service	NC	84	ca. 1902

United States Department of the Interior
National Park Service

**National Register of Historic Places
Continuation Sheet**

Section 7 Page 13 Columbus Commercial Historic District, Columbus, Platte County, Nebraska

PT01-472	2516 12th St.	Farmers Union Central Business Association	The Back Door	C	84	ca. 1927
PT01-091	12th St. B/W 25th & 26th Aves.	Union Pacific Depot	Union Pacific Depot	C	93	1910
PT01-121	2301 13th St.	Rickert Bldg	Cornhusker Office Supplies	C	82	1910
PT01-122	2304 13th St.	Lincoln Highway Garage	Nielson Chevrolet/Buick/Mazda	C	60	1915
PT01-120	2307 13th St.	Johnson Radio Shop	Mr. Wize Buys Carpet Shop	C	82	ca. 1925
PT01-119	2309 13th St.	Rohner Buick Co.	Fremont Office Equipment Co.	C	82	ca. 1925
----	2312 13th St.	Nielson/Chev./Buick	Nielson/Chev./Buick	NC	60	post 1946
PT01-118	2313 13th St.	Granlund Harness Shop	Fremont Office Equipment Co.	C	82	ca. 1914
PT01-447	2314 13th St.	Nash Dietz Warehouse	Lampshire Chiropractic Center	C	60	ca. 1937
PT01-117	2317 13th St.	Gerrard & Dussell Block	Kumph, Langan, Schoeph Realty	C	82	1919
PT01-123	2318 13th St.	Abts Grocery Wholesale	K-C Auto Supply	C	60	ca. 1900
PT01-116	2319 13th St.	Schultz Saloon	Rose Petals	C	82	ca. 1893
PT01-448	2320 13th St.	Weil Packard & Studebaker Co.	Trowbrige Motor Co.	C	60	ca. 1943
PT01-115	2402 13th St.	North Opera House	Columbus Pioneer Plaza	C	59	ca. 1902
PT01-114	2403 13th St.	Herman P.H. Oehlrich Bldg.	C.P.S.	C	83	ca. 1902/ rem. 1940
PT01-113	2405 13th St.	Braun Bakery	Gloor Bakery	C	83	ca. 1914
PT01-124	2406 13th St.	Rusche Bldg.	Rusche Bldg.	C	59	1911

United States Department of the Interior
National Park Service

**National Register of Historic Places
Continuation Sheet**

Section 7 Page 14 Columbus Commercial Historic District, Columbus, Platte County, Nebraska

PT01-112	2407 13th St.	Commercial Bldg.	Rumors	C	83	ca. 1914
PT01-125	2408 13th St.	Columbus Theatre	Columbus Theatre	C	59	1926
PT01-111	2409 13th St.	Cassin Bldg.	Goodwill	C	83	1914
----	2410 13th St.	Commercial Bldg.	Entertainment ETC	NC	59	post 1946
PT01-449	2411 13th St.	Dussell & Son Plumbers	Color World Carpets	C	83	ca. 1913
----	2415 13th St.	Becher-Curry Bldg.	Becher-Curry Bldg.	NC	83	1982
-----	2416-2418 13th St.	J.C. Penney Bldg.	J.C. Penney Bldg.	NC	59	ca. 1950
PT01-450	2417 13th St.	Galley Bldg.	Dee's Hallmark	C	83	1911
PT01-108	2423 13th St.	Commercial National Bank	Midwest Vacuum	C	83	1917 rem. 1940
PT01-107	2501 13th St.	Gray's Bldg./Farmer's State Bank	Columbus Trust and Bank Co.	C	84	1888 rem. 1917
PT01-126	2502-2506 13th St.	J.E. North Bldg.	J.E. North Bldg.	C	58	1890
PT01-106	2503 13th St.	Commercial Bldg.	Commercial Bldg.	NC	84	ca. 1893
-----	2505 13th St.	Commercial Bldg.	Commercial Bldg.	NC	84	ca. 1893
PT01-451	2507 13th St.	Curry Brothers Bldg.	Kelly Jewelry	C	84	1926
PT01-453	2508 13th St.	LaBook Ladies Shop	Kidstuff	C	58	ca, 1923
PT01-105	2509 13th St.	Dack Drug Store/Odd Fellows Hall	Bogey's Music	C	84	ca. 1885/ rem. 1916
PT01-454	2510 13th St.	L.W. Weaver Bldg.	Bargins Galore	C	58	1919

United States Department of the Interior
National Park Service

**National Register of Historic Places
Continuation Sheet**

Section 7 Page 15 Columbus Commercial Historic District, Columbus, Platte County, Nebraska

PT01-104	2511 13th St.	Smith Wood Co. Bldg.	Radio Shack	C	84	ca. 1914
PT01-455	2512 13th St.	Reece Shoe Co.	Just-A-Buck	C	58	ca. 1913
PT01-103	2513 13th St.	Columbus Candy Kitchen	Tweets Shop	C	84	ca. 1914
PT01-127	2514 13th St.	Hansen Bldg.	Columbus Music	C	58	ca. 1914
PT01-456	2516 13th St.	Bowling Alley	Trade Home Shoes	NC	58	ca. 1902
PT01-452	2517 13th St.	Niewohner Jewelry	McCristy Jewelry	C	84	ca. 1902/ rem. 1941
PT01-457	2518 13th St.	Palace Meat Market	DiCo's 13th St. Printing	C	58	ca. 1913
PT01-458	2520 13th St.	Commercial Bldg.	Larson Florine Clothing Co.	C	58	ca. 1902
PT01-459	2522 13th St.	Becher, Hockenberger & Chambers Ins.	Frontier Bookstore	NC	58	ca. 1911
PT01-128	2524 13th St.	Poesch Bldg.	Frontier Bookstore	C	58	ca. 1911
PT01-102	2601 13th St.	Columbus State Bank	Conservative Savings Bank	C	85	1905/ rem. 1940
PT01-101	2603 13th St.	Janing Bldg.	Conservative Savings Bank	C	85	ca. 1909/ rem. 1940
----	2605 13th St.	Commercial Bldg.	Elle Fashion/Merle Norman	NC	85	ca. 1950
----	2607 13th St.	Commercial Bldg.	Tooley Drug and Home Care	NC	85	ca. 1950
PT01-100	2609 13th St.	Brugger Bldg.	Tooley Drug	C	85	ca. 1902/ rem. 1916
----	2617 13th St.	Meat Market	Tooley Drug and Home Care	NC	85	ca. 1909

United States Department of the Interior
National Park Service

**National Register of Historic Places
Continuation Sheet**

Section 7 Page 16 Columbus Commercial Historic District, Columbus, Platte County, Nebraska

----	2623 13th St.	First National Bank & Trust Co.	First National Bank & Trust Co.	NC	85	ca. 1970
PT01-097	2707 13th St.	Swan Theatre	Billy Bob's Antique Mall	C	86	1916
PT01-469	2710 13th St.	C.J. Garlow Bldg.	C.J. Garlow Bldg.	C	57	ca. 1927
PT01-096	2711 13th St.	W.C. Butt's Drug Store	Tan N' Tub	C	86	1916
----	2712 13th St.	Boyd & Son Tin Shop	Picket Fence Cafe	NC	57	ca. 1914
----	2714 13th St.	Prieb Paint Store	Picket Fence Cafe	NC	57	ca. 1914
----	2715 13th St.	Commercial Bldg.	Larrells Camera Center	NC	86	ca. 1950
PT01-470	2716-2718 13th St.	Executive Bldg/Safeway Grocery	Executive Bldg.	C	57	1935
PT01-095	2719 13th St.	Goodrich Silverstone Store	Beauty College	C	86	ca. 1935
PT01-471	2720 13th St.	Columbus Rubber Works	Don's Appliance Service	C	57	ca. 1909
PT01-094	2723 13th St.	Mason/Ragatz Bldg.	Late Night	C	86	1915
----	2724 13th St.	Commercial Bldg	Columbus Foot Clinic	NC	57	post 1946
PT01-003	2804 13th St.	Gottberg Garage	Gottberg Brew Pub	C	56	1921
PT01-445	2321 14th St.	Commercial Bldg.	Collectibles Plus	NC	60	post 1946
PT01-444	2323 14th St./1365 24th Ave.	Grey Taxi Co.	Trowbridge Ford/Commercial	C	60	ca. 1923
PT01-136	2409 14th St.	McCullough Motor Co.	Garage	C	58	ca. 1930
PT01-140	2522 14th St.	City Hall	Senior Center	C	50	1935
PT01-001	2606 14th St.	Platte County Court House	Platte County Court House	C	51	1920-1922
PT01-132	B/W 13th & 14th & 26th & 27th	Frankfort Park	Frankfort Park	C	Park	1899

United States Department of the Interior
National Park Service

**National Register of Historic Places
Continuation Sheet**

Section 7 Page 17 Columbus Commercial Historic District, Columbus, Platte County, Nebraska

PT01-144	2805 14th St.	Schmid Apts.	Schmid Apts.	C	56	ca. 1937
PT01-446	1264 23rd Ave.	Nickolite Garage	Garage	C	82	ca. 1935
PT01-088	1260-1262 24th Ave.	Columbus Fuel and Storage	Tire Outlet	C	83	1917
----	ca. 1265 24th Ave.	Garage	Krumland Auto Sales	NC	82	ca. 1950
PT01-482	1059 25th Ave.	Maier & Son Blacksmith	Miller's Radiator Repair	C	117	ca. 1935
----	1061 25th Ave.	Liberty Cleaners	Liberty Cleaners	NC	117	post 1946
PT01-483	1065 25th Ave.	O'Callaghan Auto Repair	Garage	C	117	ca. 1925
PT01-089	1258-1260 25th Ave.	Gray's Block	Galaxy Amusement	C	84	ca. 1909/ rem. 1925
PT01-110	1263 25th Ave.	Henry Gass Bldg.	Michelle's Ceramics	C	83	1924
PT01-109	1265 25th Ave.	Scheridan Barber Shop	Unique Images	C	83	ca. 1925
----	1362 25th Ave.	Ameritas Financial	Ameritas Financial	NC	58	ca. 1960
PT01-474	1059 26th Ave.	Garage	Tom's Auto Sales	C	118	ca. 1937
PT01-068	1061 26th Ave.	Commercial Bldg	Avenue Bar	C	118	1885
----	1067 26th Ave.	Terasinski Harness	Green Lantern	NC	118	ca. 1909
PT01-497	1069 26th Ave.	Herchenhan Liquor Store	Magazine Rack	C	118	ca. 1935
----	1158 26th Ave.	Mead Bldg. Center Co.	Mead Bldg. Centers Co.	NC	93	post 1946
PT01-092	1251 26th Ave.	First National Bank	Shear Dimensions/CA Fashions	C	84	1882
PT01-466	1255 26th Ave.	Eagle Cafe	La Estrella	C	84	ca. 1913

United States Department of the Interior
National Park Service

**National Register of Historic Places
Continuation Sheet**

Section 7 Page 18 Columbus Commercial Historic District, Columbus, Platte County, Nebraska

PT01-093	1257 26th Ave.	Anderson, AC Florist	Anderson Florist	C	84	ca. 1927
----	1259 26th Ave.	Commercial Bldg.	Prokupek Shoes	NC	84	post 1946
PT01-463	1262 26th Ave.	Columbus Cream Co.	Inkcredible	C	85	ca. 1909
PT01-462	1263 26th Ave.	Schilz Shoemaker	Omega Styling	C	84	ca. 1902
PT01-464	1264 26th Ave.	Style Shop	Commercial Bldg.	C	85	ca. 1927/ rem. 1939
PT01-130	1265 26th Ave.	Lueschen Bldg.	Platte Valley Sales/Service	C	84	ca. 1909
PT01-465	1266 26th Ave.	Evans Clinic	Commercial Bldg.	C	85	ca. 1923
PT01-129	1267 26th Ave.	Union Block	Tweets Sports/Small Wonder	C	84	ca. 1909
PT01-460	1359 26th Ave.	Office Bldg.	Kurtenbach Law Office	C	58	ca. 1899/ rem. 1940
PT01-461	1361 26th Ave.	Columbus Maytag Co.	Johnson Law Office	C	58	ca. 1925
PT01-467	1260 27th Ave.	Baker & Graves Block	Betty Ann Beauty Salon	C	86	1917
PT01-468	1264 27th Ave.	Columbus Steam Laundry	Goc's Photography	C	86	1918
PT01-099	1266 27th Ave.	Phillips' Block	Daylight Donuts	C	86	1917
PT01-098	1268-1270 27th Ave.	Phillips & Friedhof Bldg.	Schwesers Bldg.	C	86	1918
PT01-131	1354 27th Ave.	Evans Hotel	Hotel Evans	C	57	1913
----	1356-1362 27th Ave.	Evans Clinic	Office Bldg.	NC	57	ca. 1893

United States Department of the Interior
National Park Service

**National Register of Historic Places
Continuation Sheet**

Section 8 Page 1 Columbus Commercial Historic District, Columbus, Platte County, Nebraska

Section 8 - Statement of Significance

The Columbus Commercial Historic District meets the National Register under two criteria. Both criteria are detailed separately in Section 8 under the subheadings of Historic Background and Architecture. First, the district is historically significant under Criterion A for its association with the commercial development of the city of Columbus and Platte County. Established in 1856 along a well-known trail route, Columbus' history is entrenched in its position as a regional trade center along the Platte River in east central Nebraska. The period of significance spans from 1882, when the earliest extant commercial building in Columbus was constructed, to the end of the historic period dating 1946. Second, the Columbus Commercial Historic District is also significant under Criterion C for its grouping of buildings representing an array of architectural styles and forms indicative of the late nineteenth and early twentieth centuries. Significant expansion and construction in the historic district took place between the years of 1910 and 1919. This span of years correlated with a prosperous agricultural period in the region, as well as the routing of the Lincoln Highway through downtown. The architectural character of the district includes both continuity of design and a high level of integrity. The ten and one-half block area consists of 100 contributing buildings, one contributing site, and 26 noncontributing buildings.

The following table provides the reader with the tools to comprehend the historic name changes of streets in the Columbus Commercial Historic District.

Pre 1899 Name	Pre 1919 Name	Current Name
L Street	Lewis Street	Twenty-third Avenue
M Street	Murray Street	Twenty-fourth Avenue
N Street	North Street	Twenty-fifth Avenue
O Street	Olive Street	Twenty-sixth Avenue
Nebraska Avenue	Platte Avenue	Twenty-seventh Avenue
Q Street	Quincy Street	Twenty-eighth Avenue

United States Department of the Interior
National Park Service

**National Register of Historic Places
Continuation Sheet**

Section 8 Page 2 Columbus Commercial Historic District, Columbus, Platte County, Nebraska

Historical Background

Columbus is located in southeastern Platte County in east-central Nebraska. The Loup River runs along the city's southern limits and joins with the Platte River at the southeast edge of Columbus. Major thoroughfares providing access to Columbus include U.S. Highway 30 (aka Lincoln Highway) which runs in a zigzag pattern from the northeast corner to the southwest edge of the community, and U.S. Highway 81 (aka Meridian Highway) which stretches north and south along the western side of the city.

During the mid-1800s, in an effort to build a community west of Omaha on the proposed path of the railroad, a group of twelve settlers from Ohio formed the Columbus Town Company (aka Columbus Township Company) in Omaha. In 1856, under the direction of the company, an expedition consisting of Frederick Gottschalk, Adam Denk, Jacob Louis, and George Rousche headed west to select a town site. Since the site of Columbus was near the town of Pawnee City,¹ which provided a ferry across the Loup River, the Columbus Town Company and the Elkhorn and Loup Fork Bridge and Ferry Company merged. Shortly thereafter, the original townsite of Columbus was surveyed in a grid pattern and divided into 155 blocks, which were subdivided into eight lots each. The company immediately began efforts to increase the size of its population, such as donating stock for both the erection of a saw mill and awarding stock to the first woman settler, as well as giving gift lots to brick yards and prominent home owners. Free lots were also given to regional newspapers that advertised Columbus as a favorable community for settlers. By 1857, a post office began operating in the area and by winter provided service to a total of thirty-five people.²

Columbus developed near the overland trail which followed the Platte River. Early businesses in Columbus began operating along Seventh Street near the traffic along the river. A decade later, in 1866, the main line of the Union Pacific Railroad reached the community. This resulted in a physical transformation of Columbus. Due to the demands placed on Columbus as a railroad

¹ The above-mentioned Pawnee City, which was located near present-day Columbus, should not be confused with Pawnee City in Pawnee County, Nebraska.

² Elton A. Perkey, "Perkey's Names of Nebraska Locations," *Nebraska History* 59 (Fall 1978): 453; Irene O'Brien, *Columbus 1992: A Snapshot* (N.p., 1992), 6; "Platte County, Columbus Time Line," (1980): 1. Located at the Columbus Public Library, NE; John W. Reys, *Cities of the American* (Princeton, N.J.: Princeton University Press, 1979), 412.

United States Department of the Interior
National Park Service

**National Register of Historic Places
Continuation Sheet**

Section 8 Page 3 Columbus Commercial Historic District, Columbus, Platte County, Nebraska

stop, retail stores moved north to border both sides of the rails along Eleventh and Twelfth streets.³ This relocation served as one of the first steps in the development of Columbus as a regional trade center.

The commercial district grew in the 1870s due to increased farming in Platte County as well as the city's location on the Union Pacific Railroad mainline. In 1873, to satisfy the enlarging retail demand, eleven commercial buildings were constructed in Columbus.⁴ A photograph of the Columbus commercial center dated 1873 shows two brick and six false front stores occupied by several drygood and grocery stores, a boot and shoe store, a news depot, a saloon, and a harness shop. By the end of the decade, Columbus was serving as a trade center for at least an eight county radius, as well as for the population of Platte County which had grown three-fold in a ten year period.⁵

Besides accommodating area residents with goods and services, in the mid 1870s local business also profited from miners headed for the Black Hills of South Dakota. During the 1875 gold rush in the Black Hills, local business people capitalized on their location and promoted Columbus as an "outfitting and caravan" center. Due to the efforts of Columbus retailers, eastern newspapers advertised a train ride to Columbus, followed by a profiteer guided overland excursion as an alternate route to the Black Hills gold fields. Obviously, the miners were expected to equip themselves in Columbus instead of traveling with their goods across the county. Due to the efforts of the retail community, Columbus boasted handling 1.95 million dollars worth of business during the decade. This figure was approximately eighty-thousand dollars greater than the previous decade. As a result of this prosperity and the realization that their community was well-established, organizers of the Columbus Town Company disbanded their group.⁶

³ *80 Years of Progress, Columbus, Nebraska, 1856-1936* (Columbus, NE: The Art Printery, 1936), 5-6.

⁴ "Platte County, Columbus Time Line," (1980): 4. Located at the Columbus Public Library, Columbus, NE.

⁵ Margaret Curry, *The History of Platte County, Nebraska* (Culver City, CA: Murray & Gee, 1950), 52; Addison E. Sheldon, ed., *The Nebraska Blue Book and Historical Register, 1920* (Lincoln, NE, December, 1920), 391.

⁶ Margaret Curry, *The History of Platte County, Nebraska* (Culver City, CA: Murray & Gee, 1950), 52; "Early Settlers Had Market at Own Door," *Columbus Daily Telegram* 17 September 1940; "Platte County, Columbus Time Line," (1980): 4. Located at the Columbus Public Library, Columbus, NE.

United States Department of the Interior
National Park Service

**National Register of Historic Places
Continuation Sheet**

Section 8 Page 4 Columbus Commercial Historic District, Columbus, Platte County, Nebraska

In the 1870s, the stability of Columbus as a trade center was solidified with the establishment of financial institutions in the community. Prior to the establishment of any banks in Columbus, residents used institutions in Omaha for their financial needs. In 1871, the first private bank in Columbus was established by Leander Gerrard and Julius Reed. Three years later, Abner Turner and George Hulst opened a second private bank in the community. In 1875, these two banks merged to form the Columbus State Bank. In 1880, a second banking institution opened under the direction of Andrew Anderson and Ole Roen. Two years later, Anderson and Roen, along with seven other men, incorporated to form the First National Bank (PT01-092). With the addition of the new Columbus Savings Bank Loan and Trust Company in 1886, Columbus housed three financial institutions. One year later, an outgrowth of this bank was incorporated as the Commercial Bank of Columbus and in 1899 it became known as the Commercial National Bank.⁷

Besides the typical money-making ventures found in downtown, fraternal lodges were often housed in the upper stories of Columbus commercial buildings. Fraternal lodges, which formed in the United States in the late nineteenth and early twentieth centuries, provided social interaction for people with similar backgrounds. These groups offered a sense of companionship, and provided financial and emotional support to the community's infrastructure. Donations to medical facilities, scholarships, and public improvements--as well as insurance policies for members--comprised some of the projects undertaken by fraternal organizations. The largest increase of fraternal organizations in the Midwest occurred in the period after the Civil War until the end of the first decade of the twentieth century. Most of the fraternal organizations in Platte County were organized during this time.⁸

The 1870s mark one of the most active decades in Columbus for the organization of fraternities. The following is a list of societies formed in Columbus in the 1870s and places them in chronological order: 1872 Eastern Star; 1873 Sons of Temperance; 1874 Odd Fellows; 1875 Knights of Pythias and Free Masons; and 1876 Daughters of the Rebekah and Good Templars.

⁷ In 1905, the Columbus State Bank occupied its new building. "The Columbus State Bank...." *Columbus Telegram* 24 November 1905; In 1917, the Commercial National Bank Building was erected. "Will Build New Brick Block," *Columbus Telegram* 30 March 1917; Margaret Curry, *The History of Platte County, Nebraska* (Culver City, CA: Murray & Gee, 1950), 364-368.

⁸ Barbara Wyatt, *Cultural Resource Management in Wisconsin*, 3 vols. (Madison: The State Historical Society of Wisconsin, 1986), vol. 3, Social and Political, 5-1 to 5-3.

United States Department of the Interior
National Park Service

**National Register of Historic Places
Continuation Sheet**

Section 8 Page 5 Columbus Commercial Historic District, Columbus, Platte County, Nebraska

Meeting rooms for these fraternal organizations in Columbus were often located in the upper stories of downtown businesses. In 1905, six lodge rooms were located in the city. The Elks, although not listed among the earliest fraternities in Columbus, also conducted fraternal activities in Columbus and rented space in the Rickert Building (PT01-121) and the Gray's Block (PT01-089). The only known building in the district erected by a fraternal lodge is the Masons/Ragatz Building (PT01-094). In 1915, the Masons and Henry Ragatz both contributed \$10,000 for the construct of a new building at 2711 Thirteenth Street. This building, which was designed by the architectural firm of Grabe and Helleberg, housed the Ragatz grocery store in the basement and first floor and the Masonic Temple in the second level.⁹

Prosperity and growth continued in Columbus during the 1880s and 1890s. Newly developed communication and transportation lines offered residents broader markets. In the early 1880s, the Nebraska Telephone Company began servicing Columbus and tracks of the Omaha, Niobrara and Black Hills Railroad reached the community. The presence of the rails helped encourage the enlargement of livestock production to accommodate Omaha markets, the erection of a pork packing plant and a creamery, and the sale of grain by area merchants to international markets. By the mid 1880s, Columbus also benefitted from municipal improvements, including a water system and electric light companies. Columbus, which was evolving into a full service commercial center, boasted the erection of a variety of buildings totaling \$127,575 in 1886.¹⁰

As a result of the new construction in the 1880s, the radius of Columbus' downtown grew. Based upon an 1885 Sanborn Map, the commercial center extended along Eleventh Street between Nebraska Avenue (aka Twenty-seventh Avenue) and L Street (aka Twenty-third Avenue). It also spilled to the north side of the tracks along two blocks of Twelfth Street and one block north on Nebraska Avenue and Olive Street (aka Twenty-sixth Avenue). A variety of retail shops such as bakeries, drug stores, clothing stores, hardware, dry goods, book stores, jewelry, and harness shops, as well as saloons, restaurants, hotels, banks, and fraternal lodges

⁹ "Masons, Star, IOOF Among 1st Lodges," *Columbus Daily Telegram* (85th Anniversary Edition, *Metropolis*) 16 September 1940; *80 Years of Progress, Columbus, Nebraska 1856-1936* (Columbus, NE: The Art Printery, 1936), 8, 21; "Elks to Vacate the Rickert Building for Wholesale Co.," *Columbus Telegram* 14 February 1919; "Two Stores and Lodge to Occupy Gray Block," *Columbus Daily Telegram* 23 May 1924; "Modern Building and the Men Who Made It," *Columbus Telegram* 4 June 1915.

¹⁰ Margaret Curry, *The History of Platte County, Nebraska* (Culver City, CA: Murray & Gee, 1950), 48, 50, 51, 54; "Platte County, Columbus Time Line," (1980): 5. Located at the Columbus Public Library, Columbus, NE.

United States Department of the Interior
National Park Service

**National Register of Historic Places
Continuation Sheet**

Section 8 Page 6 Columbus Commercial Historic District, Columbus, Platte County, Nebraska

existed in the downtown.¹¹

After the turn of the century, much of the commercial development in Columbus occurred north of the Union Pacific tracks. Based upon the 1902 Sanborn Fire Insurance map, both blocks 84 and 85, which were located between Nebraska Avenue (aka Twenty-seventh Avenue) and North Street (aka Twenty-fifth Avenue) and Twelfth and Thirteenth streets, were filled with businesses.¹² By the next decade, Columbus experienced a commercial construction boom, which is evidenced by the fact that thirty-five extant buildings in the commercial district were built between 1910 and 1919. Since most of the vacant lots in the downtown existed north of the Union Pacific tracks, eighty-nine percent of the new construction occurred in this area. Even the 1910 Union Pacific Depot (PT01-091), which served as a vital link between the two commercial districts in Columbus, was erected on the north side of the rails between Twenty-fifth and Twenty-sixth avenues. By the mid 1910s, almost every lot between Murray Street (aka Twenty-fourth Avenue) and Platte Avenue along Thirteenth Street was occupied by a commercial building, indicating there was no longer a question as to which side of the tracks supported the main commercial district. Furthermore, the north side of the tracks still had vacant lots on the east, north, and west ripe for new construction.¹³

The entertainment industry flourished in Columbus in the twentieth century. The construction of the circa 1902 North Opera House (PT01-115) at 2402 Thirteenth Street represents one the first brick buildings erected on the north side of the Union Pacific tracks solely for the purpose of entertainment. By 1914, with the growing interest in movies, the North Opera House was renamed the North Theater. With the increasing popularity of motion-pictures, theater owners began erecting architecturally significant buildings to present an enchanting atmosphere to patrons. These motion picture houses were usually located in the heart of the commercial

¹¹ Please see first page of section 8 regarding street name changes. Sanborn Fire Insurance Company, *Sanborn-Perris Fire Insurance Map of Columbus, Nebraska* (1885).

¹² Sanborn Fire Insurance Company, *Sanborn-Perris Fire Insurance Map of Columbus, Nebraska* (1902).

¹³ Sanborn Fire Insurance Company, *Sanborn-Perris Fire Insurance Map of Columbus, Nebraska* (1914; 1925).

United States Department of the Interior
National Park Service

**National Register of Historic Places
Continuation Sheet**

Section 8 Page 7 Columbus Commercial Historic District, Columbus, Platte County, Nebraska

district.¹⁴ Both the 1916 Swan Theater (PT01-097), constructed at 2707 Thirteenth Street, and the 1926 Columbus Theater (PT01-125), constructed at 2408-2410 Thirteenth Street, stand as fine examples of the changing importance of theaters. Erected in the center of Columbus' downtown, these buildings display some of the most ornate architectural details in the commercial district.

The early decades of the twentieth century in Columbus saw the establishment and construction of a number of new retail businesses. In 1911, the Galley Building (PT01-450) was erected at 2417 Thirteenth Street to provide space for Galley Dry Goods. Approximately two years later, both the Chicago Store (PT01-478) and Helphand Dry Goods (PT01-479) occupied new buildings on Eleventh Street. In 1918, one of the district's most distinctive retail stores was designed by Grabe and Helleberg Architects for Phillips and Friedhof and erected at 1268-1270 Twenty-seventh Avenue. This building, which cost approximately sixty-five thousand dollars, was built adjacent to the 1917 G.W. Phillips Block (PT01-099). In 1929, George Schweser and Sons purchased the Phillips & Friedhof Building (PT01-098) for use as a department store. The Schweser Store still operates in its original location as a department store.¹⁵

During the second decade of the century, four production-oriented business were erected along Thirteenth Street in the commercial district. The Poesch Building (PT01-128) stands as the finest bakery/confectionary building erected in Columbus. This three-story building, constructed in circa 1911, is located at 2524 Thirteenth Street. The circa 1913 Columbus Candy Kitchen (PT01-103) was erected at 2513 Thirteenth Street and one year later, the Braun Bakery (PT01-113) operated at 2405 Thirteenth Street. Even though production of goods in buildings located in downtown Columbus mainly revolved around edible products, a shoe factory was also located in Columbus. The most unusual industry in the commercial district of Columbus was the Reece Shoe Factory (PT01-455) built circa 1913 at 2512 Thirteenth Street. This shoe company, which started in 1885 under the ownership of John Lutz and later sold to John A. Reece, produced

¹⁴ Herbert Gottfried and Jan Jennings, *American Vernacular Design, 1870-1940* (Ames: Iowa State University Press, 1988),6.

¹⁵ "A New Palatial Business Home," *Columbus Telegram* 20 July 1917; "New Fronts Are All Leased," *Columbus Telegram* 19 January 1917; "Schweser's Sons Operate 3 Stores," *Columbus Daily Telegram* 16 September 1940.

United States Department of the Interior
National Park Service

**National Register of Historic Places
Continuation Sheet**

Section 8 Page 8 Columbus Commercial Historic District, Columbus, Platte County, Nebraska

wood soled shoes. These shoes, which did not conduct heat, cold, water, electricity, or acid, were used in foundries, creameries, and meat packing plants.¹⁶

The increase in business opportunities led to the need for more financial institutions. Following the turn of the century, the first bank to organize in Columbus was the German National Bank. Established in 1906 under the direction of G.W. Phillips and Theodore Friedhof, the bank occupied a building at the southeast corner of Thirteenth Street and Twenty-seventh Avenue. Since Germany was an enemy of the United States during World War I, the bank was renamed the Central National Bank. Just prior to the war, the Farmers State Bank formed and the 1888 Gray's Building (PT01-107) was significantly remodeled for its new home. By the 1920s, Columbus housed six banks including Central National Bank, Columbus State Bank, Commercial National Bank, Farmers State Bank, First National Bank, and Home Savings Bank. In the early 1930s, as a result of the nationwide depression, all of the banks in Columbus closed with the exception of the Central National Bank. To support the financial needs of the city, the Columbus Bank was organized and opened for business in the former Farmers State Bank Building in 1934. By the mid-1940s, the Columbus Bank and Central National Bank were the only banks in the community.¹⁷

By the second decade of the century, commercial activity in Columbus surged due to its location as a crossroads on the transcontinental routes of the Lincoln (east/west) and Meridian (north/south) highways. The Lincoln Highway extended between New York and California and the Meridian Highway connected the Gulf of Mexico to Winnipeg, Canada. Since Columbus historically served as a stop along major westward trail routes and the later Union Pacific line, it was familiar with its role as a resting stop and market place for travelers. The condition of roads through Columbus and the roadside services offered to travelers were often reported in national guidebooks published by "good roads" associations. Therefore, it was important for Columbus to display modern conveniences to entice tourists to travel through the area. The most visible, high traffic areas in Columbus included Thirty-third Avenue along the Meridian Highway, and

¹⁶ "Two Reece Sisters, Columbus Business Women, In Feature," *Columbus Daily Telegram* 7 April 1930.

¹⁷ "Gooden and Ostram..." *Columbus Telegram* 30 March 1917; Margaret Curry, *The History of Platte County, Nebraska* (Culver City, CA: Murray & Gee, 1950), 368-370; *Columbus Nebraska Directory, 1923-1924* (Spokane, WA: Hadley Directory Co., 1923), 93; *Columbus City Directory, 1943-1944* (Columbus, NE: The Art Printery, 1943), 165.

United States Department of the Interior
National Park Service

**National Register of Historic Places
Continuation Sheet**

Section 8 Page 9 Columbus Commercial Historic District, Columbus, Platte County, Nebraska

sections of the path of the Lincoln Highway which included Lewis Street (aka Twenty-third Avenue), Thirteenth Street, and Platte Avenue (aka Twenty-seventh Avenue). These areas received much attention from local business people and city officials. Municipal improvements along the route included lighting of downtown in 1913. One year later, with the passage of a thirty thousand dollar bond, officials undertook efforts to pave city streets. By the next decade, the route of the Lincoln Highway through downtown was paved.¹⁸

Heightened commercial construction in the downtown resulted from the placement of the route of the Lincoln Highway through Columbus. Prior to this time, accommodations constructed in the downtown focused on the clientele of the Union Pacific. Due to its location on the Union Pacific's main line, as early as 1885, hotels in Columbus included the Clothier Hotel [Clothier], Lindell Hotel, and Grand Pacific Hotel. By 1893, sizeable hotels such as the Meridian, the Thurston, and the Oxford (PT01-090) also provided rooms for travelers on the rails passing through Columbus. These buildings all resided upon corner lots and stood two to three stories tall. In 1913, a new addition to the hotel industry in Columbus arrived with the erection of the Evans Hotel (PT01-131). It was located on a pivotal corner of the Lincoln Highway, at the intersection of Platte Avenue (aka Twenty-seventh Avenue) and Thirteenth Street. If the Evans Hotel was full, motorists only needed to drive within a three-block radius from the route to find rooms at the Clothier Hotel, Meridian Hotel, Thurston Hotel, Lindell Hotel, and Pacific Hotel.¹⁹

In addition to hotel rooms, travelers also warranted the erection of new service garages in downtown Columbus. In 1915, as a result of the incorporation of the Lincoln Highway Garage Association, a service station known as the Lincoln Highway Garage (PT01-122) was built at Thirteenth Street and Lewis Street (aka Twenty-third Avenue). By 1930, this garage was sold to

¹⁸ *Automobile Blue Book, 1920* (New York: The Automobile Blue Book Publishing Co., 1920), 51-53; *The Complete Official Road Guide of the Lincoln Highway* (Detroit, MI: The Lincoln Highway Association, Inc., 1924), 383-384; *80 Years of Progress, Columbus, Nebraska, 1856-1936* (Columbus, NE: The Art Printery, 1936), 21; Margaret Curry, *The History of Platte County, Nebraska* (Culver City, CA: Murray & Gee, 1950), 59; Sanborn Fire Insurance Company, *Sanborn-Perris Fire Insurance Map of Columbus, Nebraska* (1925); "Two Blocks of Thirteenth...." *Columbus Telegram* 19 November 1915; "Will Start Paving In July," *Columbus Telegram* 11 May 1917; "Getting Ready for Pavement," *Columbus Telegram* 29 June 1917.

¹⁹ Sanborn Fire Insurance Company, *Sanborn-Perris Fire Insurance Map of Columbus, Nebraska* (1885; 1893; 1914).

United States Department of the Interior
National Park Service

**National Register of Historic Places
Continuation Sheet**

Section 8 Page 10 Columbus Commercial Historic District, Columbus, Platte County, Nebraska

Ed M. Nielson and operates under that surname to date.²⁰ In 1921, due to increased business, Max Gottberg replaced his service station with a two-story brick building at 2804 Thirteenth Street. The Gottberg Garage (PT01-103), which was constructed at a cost of one-hundred twenty-five thousand dollars, served as home to the Ford Agency as late as 1946.²¹ In circa 1923, the Grey Taxi Company and Garage (PT01-444) was constructed at 2323 Fourteenth Street. By 1927, the building was also occupied by J.A. Murcek Automotive Repair. Today, the building still services the motor vehicle industry as Trowbridge Ford. On the south side of the tracks, the O'Callaghan Auto Repair Station (PT01-483) was erected circa 1925 at 1065 Twenty-fifth Avenue. Like the Nielson and Trowbridge garages, it continues to function in the automotive business.

By the end of the second decade of the twentieth century, a physical transformation occurred in the commercial district. Based upon the 1925 Sanborn map, almost every lot along Thirteenth Street between Twenty-third and Twenty-ninth avenues was occupied by commercial buildings. Additionally, all of the major commercial thoroughfares were paved. Perhaps the strongest presence in the district is the 1920-1922 Platte County Courthouse (PT01-001) at 2606 Fourteenth Street.²² Prior to the construction of the county building, controversy ensued regarding its location. While some wanted it located at Columbia Square (aka Courthouse Square and Columbus Square), south of the railroad tracks and several blocks east of the commercial center, others felt that it should be built on the north side of the tracks near the principal commercial district. The business people won the controversy, and a site north of Frankfort Park (PT01-132) was purchased by the county for twenty-thousand dollars. In November of that year, the members of the local Masonic Lodge laid the cornerstone for the courthouse. This building is still utilized for Platte County activities and it serves as an anchor

²⁰ "Breaking of Ground...." *Columbus Telegram* 5 November 1915; "Articles of Incorporation," *Columbus Telegram* 12 March 1915; *Hoffhine's Columbus, Nebraska Directory, 1930* (Kansas City, MO: Hoffhine Directory Company, 1930), 123.

²¹ "Ford Agency to Have New Home," *Columbus Telegram* 23 April 1920; Sanborn Fire Insurance Company, *Sanborn-Perris Fire Insurance Map of Columbus, Nebraska* (1946).

²² Sanborn Fire Insurance Company, *Sanborn-Perris Fire Insurance Map of Columbus, Nebraska* (1925); "Two Blocks of Thirteenth...." *Columbus Telegram* 19 November 1915; "Will Start Paving In July," *Columbus Telegram* 11 May 1917; "Getting Ready for Pavement," *Columbus Telegram* 29 June 1917.

United States Department of the Interior
National Park Service

**National Register of Historic Places
Continuation Sheet**

Section 8 Page 11 Columbus Commercial Historic District, Columbus, Platte County, Nebraska

for the commercial district.²³

Over a decade after the erection of the county courthouse, residents of Columbus united to build a new municipal building during the Great Depression. It stands as one of ten extant buildings constructed in downtown during the 1930s. The Columbus City Hall (PT01-140) was constructed to the east of the courthouse across Twenty-sixth Avenue. Financing its construction was rooted in the passage of a bond in April of 1934. The community rallied together and voted to construct the new one-hundred thousand dollar city hall and auditorium. Emiel J. Christensen of Columbus was hired as the supervising architect for the project.²⁴

In the 1930s, automobile related-businesses continued to be one of the most predominant building types constructed in the district. Even during the depression, four buildings were constructed to service the automobile industry. In the mid 1930s, the Goodrich Silverstone Store (PT01-095) at 2719 Thirteenth Street, the Nickolite Garage (PT01-446) at 1264 Twenty-third Avenue, and Maier & Son Blacksmith (PT01-482) at 1059 Twenty-fifth Avenue were built. Two years later, a new garage (PT01-474) was also operating at 1059 Twenty-sixth Avenue. Two grocery stores erected during this decade include the 1937 Safeway Grocery/Executive Building (PT01-470) at 2716-2718 Thirteenth Street and the circa 1937 Nash-Dietz Warehouse (PT01-447) at 2314 Thirteenth Street.

A rise in building permits and construction expenses in Columbus signified the ending of the Depression. While 1939 annual construction costs totaled \$74,995, in just the first six months of 1940 construction expenses reached \$58,900.²⁵ Furthermore, in 1940 the *Columbus Daily Telegram* reported 175 retail businesses with 511 workers. These businesses brought nearly \$4.5

²³ Barbara Beving Long, "Platte County Courthouse," National Register of Historic Places Nomination, Listed 10 January 1990.

²⁴ "Plan of Columbus Fire Department Becomes Reality," *Columbus Daily Telegram* 17 June 1935; "New Civic Home Adds To Burdens Of City Council," *Columbus Daily Telegram* 17 June 1935

²⁵ "Columbus Has Building Boom," *Columbus Daily Telegram* 29 June 1940.

United States Department of the Interior
National Park Service

**National Register of Historic Places
Continuation Sheet**

Section 8 Page 12 Columbus Commercial Historic District, Columbus, Platte County, Nebraska

million in trade to the community.²⁶ With the onset of the World War II, however, only one extant building in the district was constructed between 1940 and 1946. The circa 1943 Weil Packard and Studebaker Company (PT01-448) buildings was constructed 2320 Thirteenth Street. This property, which presently houses the Trowbridge Motor Company, was the most recent contributing building constructed in the Columbus commercial district.

At the end of World War II in 1945, recovery of the private sector construction industry was again indicated by building permits which resulted in \$130,535 worth of construction.²⁷ Thereafter, a steady population increase in Columbus has provided for a continually prosperous construction industry. One of the most significant population increases occurred between 1950 and 1960, when the population jumped from 8,884 to 12,476. Another significant rise occurred between 1970 and 1990, when the population increased from 15,471 to 19,480.²⁸

Architecture

The architectural character of the Columbus Commercial Historic District depicts a variety of styles, materials, and construction methods. The buildings in the district represent architectural development trends typical of Nebraska commercial centers. Most of the commercial buildings in downtown stand one to two-stories tall and were constructed of brick. Fine representatives of Italianate, Romanesque Revival, Neo-Classical Revival, Spanish Colonial Revival, Twentieth Century Commercial Vernacular, Art Deco, and Art Moderne architectural styles are located within the district.

²⁶ "Columbus is Ideal as Place to Live, Work," *Columbus Daily Telegram* 16 September 1940.

²⁷ "Building for 1945 Here Tops 1944," *Columbus Daily Telegram* 11 January 1946.

²⁸ Nebraska Legislative Council, comp., *Nebraska Blue Book, 1952* (Lincoln, NE, December 1952), 356; Nebraska Legislative Council, comp., *Nebraska Blue Book, 1962* (Lincoln, NE, December 1962), 476; Nebraska Legislative Council, comp., *Nebraska Blue Book, 1972* (Lincoln, NE, December 1972), 640; Clerk of the Legislature, comp., *Nebraska Blue Book, 1990-1991* (Lincoln, NE: Clerk of the Legislature, 1990), 856.

United States Department of the Interior
National Park Service

**National Register of Historic Places
Continuation Sheet**

Section 8 Page 13 Columbus Commercial Historic District, Columbus, Platte County, Nebraska

The first generation of buildings constructed in Columbus, from the mid-1860s to the early 1880s, was made up primarily of frame, false front, one-story buildings. These buildings were predominantly constructed on the south side of Eleventh Street. Due to their extended vertical facades which provided an illusion of taller, more elaborate buildings, false fronts were often constructed in newly platted commercial centers. All of the false front buildings in the Columbus Commercial Historic District were replaced with second generation brick buildings.²⁹

In the last few decades of the nineteenth century, the architectural character of the commercial district began to change when false-fronts were replaced with one and two-story Italianate style buildings. Italianate style storefronts, constructed primarily from the 1870s through 1890s, were most often built of brick. Ornamental features include metal cornices with bold brackets, centered doorways, window surrounds, flat roofs, multi-pane windows, and decorative capitals on pilasters. These buildings were often erected with manufactured materials.³⁰ Metal cornices and ornamental window hoods serve as some of the most identifiable features on the Italianate style buildings in Columbus such as the 1882 J.R. Ernst Building (PT01-071) at 2501 Eleventh Street, the 1891 J.P. Becker Building (PT01-090) at 2502-2504 Twelfth Street, and the 1892 J.H. Galley Building (PT01-069) at 2505 Eleventh Street.

The Italianate style served as the earliest style of architecture utilized in the construction of extant Columbus business blocks. Business blocks, which were mainly erected in the late nineteenth and early twentieth centuries, display architectural styles reflective of their period of construction. These buildings often housed a range of functions including retail stores, living quarters, and professional accommodations. Business blocks, which stretch two to three bays wide and cover an equal number of lots, were either built in the center of the commercial district or placed on corners to function as anchors. Business blocks built on corners usually place an

²⁹ Herbert Gottfried and Jan Jennings, *American Vernacular Design, 1870-1940* (Ames: Iowa State University Press, 1988), 244-245.

³⁰ Herbert Gottfried and Jan Jennings, *American Vernacular Design, 1870-1940* (Ames: Iowa State University Press, 1988), 239.

United States Department of the Interior
National Park Service

**National Register of Historic Places
Continuation Sheet**

Section 8 Page 14 Columbus Commercial Historic District, Columbus, Platte County, Nebraska

emphasis on the entrance and the cornice to give a unified appearance.³¹

Business blocks in Columbus date from the early 1890s through the 1910s. The Henry Block (PT01-067), constructed circa 1893 at 2523 Eleventh Street, is the oldest business block in the district. With its elaborate metal cornice and canted wall, it is a fine example of an Italianate style business block located on a corner. Later business blocks in the district include the circa 1909 Union Block (PT01-129) at 1267 Twenty-sixth Avenue, the circa 1909 Gray's Block (PT01-089) at 1258-1260 Twenty-fifth Avenue, the 1917 Phillips' Block (PT01-099) at 1266 Twenty-seventh Avenue, and the 1919 Gerrard & Dussell Block (PT01-117) at 2317 Thirteenth Street. These post-1900 business blocks exhibit twentieth century commercial vernacular features.

The architectural character of the commercial district changed around the turn of the century with the introduction of styles rooted in classical design. Romanesque Revival style buildings were typically adorned with arched entrances and fenestration, flat roofs, string courses, elaborate cornices, art glass, and corner entrances. This style, which was mainly constructed of brick or stone, was often used in the design of financial institutions and government buildings to give a sense of stability and protection.³² One of the earliest extant Romanesque Revival style buildings constructed in Columbus is the 1890 J.E. North Building (PT01-126) at 2502-2506 Thirteenth Street. The circa 1900 Abts Grocery Wholesale Building (PT01-123) at 2318 Thirteenth Street and circa 1902 Herman P.H. Oehlich Building (PT01-114) at 2403 Thirteenth Street were constructed after the turn of the century as retail centers. One of the last Romanesque Revival designed buildings in the district is the 1910 Union Pacific Railroad Depot (PT01-091).

Buildings incorporating the Neo-Classical Revival style of architecture were also erected in Columbus around the turn of the century. Similar to the Romanesque Revival style, this building

³¹ Herbert Gottfried and Jan Jennings, *American Vernacular Design, 1870-1940* (Ames: Iowa State University Press, 1988), 6.

³² Herbert Gottfried and Jan Jennings, *American Vernacular Design, 1870-1940* (Ames: Iowa State University Press, 1988), 246.

United States Department of the Interior
National Park Service

**National Register of Historic Places
Continuation Sheet**

Section 8 Page 15 Columbus Commercial Historic District, Columbus, Platte County, Nebraska

design was also commonly used for public facilities. Typical Neo-Classical Revival style features include full-height classical columns, symmetrical facades, balustrades, pediments, and ornate cornices.³³ The 1920-1921 Platte County Courthouse (PT01-001) is the largest example of this style. Three banks in the district also display Neo-Classical Revival features including the circa 1885 First National Bank (PT01-092) at 1251 Twenty-sixth Avenue; the Gray's Building/Farmers State Bank (PT01-107) at 2501 Thirteenth Street; and the 1905 Columbus State Bank (PT01-102) at 2601 Thirteenth Street. Neo-Classical Revival style details on these buildings include elaborate cornices, pedimented doorways, rusticated first floor materials, and classical columns.

Spanish Colonial Revival style, constructed between the 1910s and the 1930s in Columbus, is characterized by red tile roofs, arched openings, cornices, and parapets. Exterior materials include stone, brick, and stucco.³⁴ The Swan Theater (PT01-097), constructed in 1916 at 2707 Thirteenth Street, and the circa 1937 Schmid Apartment Building (PT01-144) at 2805 Fourteenth Street serve as fine representatives of this style.

Twentieth century commercial vernacular design was widely used in the early decades of the 1900s. Since this period paralleled the highest commercial construction in Columbus, a large number of buildings on the north side of the Union Pacific tracks display this style. Twentieth century commercial vernacular forms generally exhibit rectangular-shaped elevations. Variations on the exteriors of this building form are exhibited in fenestration, materials, and affixed ornamentation. Common features found on these buildings include brick construction, large plate glass windows on the first floor, simple second-story windows, decorative cornices, corbeling, pilasters, belt and string courses, and transoms. When erected in a row, these

³³ John J.G. Blumenson, *Identifying American Architecture* (Nashville, TN: American Association for State and Local History, 1981), 68-69; Virginia and Lee McAlester, *A Field Guide to American Houses* (New York: Alfred A. Knopf, Inc., 1984), 342-345.

³⁴ John J.G. Blumenson, *Identifying American Architecture* (Nashville, TN: American Association for State and Local History, 1981), 2-3; Marilyn W. Klein and David P. Fogel, *Clues to American Architecture* (Washington, D.C.: Starrhill Press, 1986), 49.

United States Department of the Interior
National Park Service

**National Register of Historic Places
Continuation Sheet**

Section 8 Page 16 Columbus Commercial Historic District, Columbus, Platte County, Nebraska

buildings often share common walls.³⁵ The three-story Poesch Building (PT01-128) erected in 1911 at 2524 Thirteenth Street; the four-story Evans Hotel (PT01-131) constructed in 1913 at 1354 Twenty-seventh Avenue; and the 1924 Henry Gass Building (PT01-110) located at 1263 Twenty-fifth Avenue stand as excellent examples of twentieth century commercial vernacular form.

Modern broad-front buildings were later commercial vernacular additions to the district. Dating between the 1910s and 1930s, this style consists of double wide storefronts braced with steel supports. The front elevations on these one-story buildings usually display two end piers, plate glass windows divided by thin mullions, transoms, and terra cotta panels.³⁶ Since this architectural form was conducive to the needs of the automobile industry, it was often used in the design of automobile dealerships and service stations. The Lincoln Highway Garage (PT01-122), which was constructed in 1915 at 2304 Thirteenth Street, is a fine example of modern broad-front building with its wide storefront and large display windows.

The Chicago Commercial style of architecture was utilized in the construction of several of the largest retail businesses in Columbus. This style, which utilizes steel frame construction and is usually clad with brick, is often characterized by geometric forms, sculptured terra cotta, window bands, and projecting eaves.³⁷ The 1918 Phillips and Friedhof Building (PT01-098) at 1268-1270 Twenty-seventh Avenue and the 1921 Gottberg Garage (PT01-003) at 2801 Thirteenth Street are prominent examples of the Chicago Commercial style.

The modernistic period of architecture is represented in downtown Columbus with several related styles. Art Deco style buildings, generally constructed between 1920 and 1945, often

³⁵ Herbert Gottfried and Jan Jennings, *American Vernacular Design, 1870-1940* (Ames: Iowa State University Press, 1988), 240-241.

³⁶ Herbert Gottfried and Jan Jennings, *American Vernacular Design, 1870-1940* (Ames: Iowa State University Press, 1988), 249.

³⁷ Marilyn W. Klein and David P. Fogel, *Clues to American Architecture* (Washington, D.C.: Starrhill Press, 1986, 36-37; John J.G. Blumenson, *Identifying American Architecture* (Nashville, TN: American Association for State and Local History, 1981), 64-65.

United States Department of the Interior
National Park Service

**National Register of Historic Places
Continuation Sheet**

Section 8 Page 17 Columbus Commercial Historic District, Columbus, Platte County, Nebraska

display bas relief on the front elevation, stepped facades, ornamentation around the openings, and a string along the roofline. The slightly later style of Art Moderne is characterized with smooth elevation materials, rounded edges, windows bands, and an overall streamlined appearance.³⁸ Both the 1926 Art Deco style Columbus Theater (PT01-125) at 2408-2410 Thirteenth Street and the circa 1914/remodeled 1920s Art Moderne style Columbus Candy Kitchen (PT01-103) erected at 2513 Thirteenth Street display modernistic features such as Carrara glass, strong vertical lines, and carved detailing.

In conclusion, the Columbus Commercial Historic District is representative of architectural styles utilized in the evolution of a typical Nebraska regional trade center. The period of significance of the district, which dates between 1882 and 1946, is supported by Columbus' location along overland trail routes, the Union Pacific main line, and both the Lincoln and Meridian highways. The Columbus Commercial Historic District has provided a variety of services and goods throughout its history. As a trade center, Columbus businesses were required to modify with the changing needs of the region. Due to this flexibility, the commercial hub enjoyed constant growth up to the Great Depression. The growth and prosperity of Columbus is represented by an abundance of early high style commercial buildings such as Italianate, Romanesque Revival, and Neo-Classical Revival. The boom period of the district, which dates from 1910 to 1919 and includes almost thirty percent of the extant buildings in the district, is depicted by a high number of twentieth century commercial vernacular designed buildings. During the 1930s, when less than ten percent of extant buildings in the district were constructed, modern styles such as Art Moderne and Spanish Colonial Revival were popular in Columbus. Since World War II, the central business district has experienced a prosperous economy which continues to the present day. Based upon the above-referenced information, the Columbus Commercial Historic District meets the National Register Criteria A and C as an excellent example of a regional commercial center in Nebraska.

³⁸ Marilyn W. Klein and David P. Fogel, *Clues to American Architecture* (Washington, D.C.: Starrhill Press, 1986, 50-51 John J.G. Blumenson, *Identifying American Architecture* (Nashville, TN: American Association for State and Local History, 1981), 76-79.

United States Department of the Interior
National Park Service

**National Register of Historic Places
Continuation Sheet**

Section 9 Page 1 Columbus Commercial Historic District, Columbus, Platte County, Nebraska

Section 9 - Bibliographical References

Blumenson, John J.G. *Identifying American Architecture: A Pictorial Guide to Styles and Terms 1600-1945*. Nashville, TN: American Association of State and Local History, 1981.

City Directory Columbus, Nebraska 1935-1936. Columbus, NE: The Art Printery, 1935.

City Directory Columbus, Nebraska 1937-1938. Columbus, NE: The Art Printery, 1937.

City Directory Columbus, Nebraska 1943-1944. Columbus, NE: The Art Printery, 1943.

Clerk of Legislature, comp. *Nebraska Blue Book 1990-1991*. Lincoln, NE: Clerk of Legislature, 1990.

Columbus Daily Telegram. Various, 1921 to 1945: Columbus, Platte County, Nebraska, located on microfilm at Nebraska State Archives, Lincoln, Nebraska.

Columbus Telegram. Various, 1893 to 1921: Columbus, Platte County, Nebraska, located on microfilm at Nebraska State Archives, Lincoln, Nebraska.

Columbus, Nebraska Directory 1923-1924. Spokane, WA: The Hadley Directory Co., 1923.

Columbus, 1856-1936. Columbus, NE: The Art Printery, 1936.

"Columbus Timeline." Located at the Columbus Public Library, Columbus, NE.

The Complete Official Road Guide of the Lincoln Highway. Detroit, MI: The Lincoln Highway Association, 1916.

The Complete Official Road Guide of the Lincoln Highway. Detroit, MI: The Lincoln Highway Association, Inc., 1924.

Curry, Margaret, *The History of Platte County, Nebraska*. Culver City, CA: Murray & Gee, 1950.

80 Years of Progress, Columbus, Nebraska 1856-1936. Columbus, NE: The Art Printery, 1936.

Gottfried, Herbert and Jan Jennings. *American Vernacular Design, 1870-1940.* Ames: Iowa State University Press, 1988.

Graff, Jane, coor. *Nebraska Our Towns... Central Northeast.* Dallas, TX: Taylor Publishing Company, 1990.

Hoffhine's Columbus and Platte County, Nebraska Directory 1913. Kansas City, MO: Hoffhine Directory Company, 1913.

Hoffhine's Columbus, Nebraska Directory 1927. Kansas City, MO: Hoffhine Directory Company, 1927.

Hoffhine's Columbus, Nebraska Directory 1930. Kansas City, MO: Hoffhine Directory Company, 1930.

Klein, Marilyn W. and David P. Fogel. *Clues to American Architecture.* Washington, D.C.: Starrhill Press, 1986.

Long, Barbara Beving. *Platte County Courthouse.* National Register of Historic Places Nomination. 10 January 1990.

McAlester, Virginia and Lee. *A Field Guide to American Houses.* New York: Alfred A. Knopf, Inc., 1989.

Nebraska Legislative Council, comp. *Nebraska Blue Book, 1940.* Lincoln, NE, 1940.

_____. *Nebraska Blue Book, 1952.* Lincoln, NE, 1952.

_____. *Nebraska Blue Book, 1962.* Lincoln, NE, 1962.

_____. *Nebraska Blue Book, 1972.* Lincoln, NE, 1972.

Nebraska Legislative Reference Bureau. *Nebraska Blue Book, 1930.* Lincoln, NE, 1930.

Official Automobile Blue Book, 1920. New York: The Automobile Blue Book Publishing Co., 1920.

Official Road Book of the Nebraska State Automobile Association. Fremont, NE: Road Book Department of Nebraska State Automobile Association, 1913.

O'Brien, Irene, et. al. *Columbus 1992: A Snapshot.* N.p., 1992

Perkey, Elton A. "Perkey's Names of Nebraska Locations." *Nebraska History* 59 (Fall 1978): 438-472.

"Platte County, Columbus Time Line." N.P., 1980. Located at the Columbus Public Library, Columbus, NE.

Reps, John W. *Cities of the American West: A History of Frontier Urban Planning*. Princeton, N.J.: Princeton University Press, 1979.

Sanborn Fire Insurance Company. *Sanborn-Perris Fire Insurance Map of Columbus, Nebraska*. 1885, 1893, 1899, 1902, 1909, 1914, 1925, 1946.

Sheldon, Addison E. *The Nebraska Blue Book and Historical Register, 1920*. Lincoln, NE, 1920.

Site Files. Located at the Nebraska State Historic Preservation Office, Lincoln, NE.

Wyatt, Barbara, ed. *Cultural Resource Management in Wisconsin: A Manual for Historic Properties*. 3 vols. Madison: State Historical Society of Wisconsin, 1986.

United States Department of the Interior
National Park Service

**National Register of Historic Places
Continuation Sheet**

Section 10 Page 1 Columbus Commercial Historic District, Columbus, Platte County, Nebraska

Section 10 - Geographical Data

UTM References-continuation

5	<u>1/4</u>	<u>6/3/7/1/1/0</u>	<u>4/5/8/7/1/7/0</u>
Zone	Easting	Northing	

Verbal Boundary Description

The boundary of the district starts at the most northwesterly point, which is located at the intersection of Twenty-seventh Avenue and the alley of Block 51. It heads east behind the courthouse along the south side of the alley, crosses Twenty-sixth Avenue, and continues east along the south side of the alley of Block 50 until the northeast corner of Lot 6. It then turns south and runs along the east side of the Lot 6 until it reaches Fourteenth Street. At Fourteenth Street the boundary runs west along the north side of the street, crosses Twenty-sixth Avenue, and then turns south down the western edge of Twenty-sixth Avenue for one-half block. The boundary then extends east across Twenty-sixth Avenue, runs along the southern edge of the alley in Block 58, crosses Twenty-fifth Avenue, continues to head east along the southern edge of the alley in Block 59 until the southwest corner of Lot 2, turns north and runs along the west line of Lot 2 until it reaches Fourteenth Street, and travels east on the southern edge of Fourteenth Street until Twenty-third Avenue. At Twenty-third Avenue, it heads south for one and one-half blocks on the west side of the street until it reaches the alley of Block 82. It then turns west and continues west along the north side of the alley until it crosses Twenty-fourth Avenue. It then turns south and runs along Twenty-fourth Avenue for one-half block to Twelfth Street. It then turns west and continues along the north side of Twelfth Street until it crosses Twenty-fifth Avenue. At Twenty-fifth Avenue, it turns south and extends along the western side of the block, crosses the railroad tracks, and continues south until it crosses Eleventh Street. Then, it turns east and stretches along the southern edge of Eleventh until Twenty-fourth Avenue. It then turns south and runs along the western edge of Twenty-fourth Avenue for one-half block until it reaches the alley of Block 117. It turns west and continues along the northern edge of the alley until it reaches the northeast corner of Lot 5. It then turns south and continues to Tenth Street, then turns west continues to the southwest corner of Tenth Street and Twenty-fifth Avenue/Lot 5. At the southwest corner of Lot 5, it heads north along the east edge of Twenty-fifth Avenue and crosses to the north side of the alley on Block 117. It then turns west and

United States Department of the Interior
National Park Service

**National Register of Historic Places
Continuation Sheet**

Section 10 Page 2 Columbus Commercial Historic District, Columbus, Platte County, Nebraska

crosses Twenty-fifth Avenue and continues along the northern side of the alley of Block 118 until it reaches the northeast corner of Lot 5 on the same block. Then, it turns south and runs along the east side of Lot 5, then turns west and runs along the south side of Lot 5 until it reaches Twenty-sixth Avenue. At Twenty-sixth Avenue, it heads north on the eastern edge of the street for two-and-one-half blocks, again crossing the railroad tracks until it reaches the north side of the alley of Block 84. At this point, it turns west, crosses Twenty-sixth Avenue, heads along the north side of the alley of Block 85, and crosses to the west side of Twenty-seventh Avenue. At Twenty-seventh Avenue, it turns south along the eastern edge of Lot 8, Block 86 for one-third the length of the lot. At such point, the boundary turns west and runs through Lots 8 and 7 until the western lot line of Lot 7. It then turns north and runs to the northern side of the alley of Block 86. Then, it heads west along the northern side of the alley until it reaches Twenty-eighth Avenue. It turns north and continues along the eastern edge of Twenty-eighth Avenue and crosses to the north side of Thirteenth Street. It then turns west and crosses Twenty-eighth Avenue and continues to head west until the southwest corner of Lot 7, Block 56. It then turns north and continues along the western lot line of Lot 7 and crosses the alley and continues north along the west line of Lot 2, Block 56. It then heads east along the south side of Fourteenth Street and turns south at Twenty-eighth Avenue and runs along the west side of Twenty-eighth Avenue until the south side of the alley of Block 56. The boundary then crosses to the east side of Twenty-eighth Avenue and continues to run along the south side of the alley in Block 57 and then crosses Twenty-seventh Avenue. It then runs one and one-half blocks north along the eastern side of Twenty-seventh Avenue up to the starting point at the intersection with the alley of Block 51.

Boundary Justification

The boundaries of the Columbus Commercial Historic District include the core business district of Columbus. These boundaries were selected based upon visual continuity of a grouping of buildings with architectural and historic integrity. The district is abutted by residential buildings to the north and south and either modern or low integrity commercial buildings to the east and west.

Columbus Commercial Historic District, Platte County, Nebraska
Name of Property County and State

Previous Documentation on File (NPS):

- preliminary determination of individual listing (36 CFR 67) has been requested
- previously listed in the National Register
- previously determined eligible by the National Register
- designated a National Historic Landmark
- recorded by Historic American Buildings Survey # _____
- recorded by Historic American Engineering Record # _____

Primary location of additional data:

- State Historic Preservation Office
 - Other State Agency
 - Federal Agency
 - Local government
 - University
 - Other
- Name of repository:
Platte County Historical Museum, Columbus, NE

10. Geographical Data

Acreage of Property 31.43 acres

UTM References (Place additional UTM references on a continuation sheet.)

1 1/4 6/3/6/8/4/0 4/5/8/7/6/3/0 3 1/4 6/3/7/4/3/0 4/5/8/7/6/3/0
Zone Easting Northing Zone Easting Northing

2 1/4 6/3/7/1/1/0 4/5/8/7/6/9/0 4 1/4 6/3/7/2/6/0 4/5/8/7/1/7/0
Zone Easting Northing Zone Easting Northing
 see continuation sheet

Verbal Boundary Description (Describe the boundaries of the property on a continuation sheet)

Boundary Justification (Explain why the boundaries were selected on a continuation sheet)

11. Form Prepared By

name/title Barbara M. Kooiman, M.A. & Elizabeth A. Butterfield, M.A.
organization Mississippi Valley Archaeology Center date 31 July 1996
street & number 1725 State Street, 310 North Hall telephone 608/785-6783
city or town La Crosse state WI zip code 54601

Additional Documentation

Submit the following items with the completed form:

Continuation Sheets

Maps: A USGS map (7.5 or 15 minute series) indicating the property's location.
A sketch map for historic districts and properties having large acreage or numerous resources.

Photographs: Representative black and white photographs of the property.

Additional Items: (Check with the SHPO or FPO for any additional items)

United States Department of the Interior
National Park Service

**National Register of Historic Places
Continuation Sheet**

Section 10 Page 1 Columbus Commercial Historic District, Columbus, Platte County, Nebraska

Section 10 - Geographical Data

UTM References-continuation

5	<u>1/4</u>	<u>6/3/7/1/1/0</u>	<u>4/5/8/7/1/7/0</u>
Zone	Easting	Northing	

Verbal Boundary Description

The boundary of the district starts at the most northwesterly point, which is located at the intersection of Twenty-seventh Avenue and the alley of Block 51. It heads east behind the courthouse along the south side of the alley, crosses Twenty-sixth Avenue, and continues east along the south side of the alley of Block 50 until the northeast corner of Lot 6. It then turns south and runs along the east side of the Lot 6 until it reaches Fourteenth Street. At Fourteenth Street the boundary runs west along the north side of the street, crosses Twenty-sixth Avenue, and then turns south down the western edge of Twenty-sixth Avenue for one-half block. The boundary then extends east across Twenty-sixth Avenue, runs along the southern edge of the alley in Block 58, crosses Twenty-fifth Avenue, continues to head east along the southern edge of the alley in Block 59 until the southwest corner of Lot 2, turns north and runs along the west line of Lot 2 until it reaches Fourteenth Street, and travels east on the southern edge of Fourteenth Street until Twenty-third Avenue. At Twenty-third Avenue, it heads south for one and one-half blocks on the west side of the street until it reaches the alley of Block 82. It then turns west and continues west along the north side of the alley until it crosses Twenty-fourth Avenue. It then turns south and runs along Twenty-fourth Avenue for one-half block to Twelfth Street. It then turns west and continues along the north side of Twelfth Street until it crosses Twenty-fifth Avenue. At Twenty-fifth Avenue, it turns south and extends along the western side of the block, crosses the railroad tracks, and continues south until it crosses Eleventh Street. Then, it turns east and stretches along the southern edge of Eleventh until Twenty-fourth Avenue. It then turns south and runs along the western edge of Twenty-fourth Avenue for one-half block until it reaches the alley of Block 117. It turns west and continues along the northern edge of the alley until it reaches the northeast corner of Lot 5. It then turns south and continues to Tenth Street, then turns west continues to the southwest corner of Tenth Street and Twenty-fifth Avenue/Lot 5. At the southwest corner of Lot 5, it heads north along the east edge of Twenty-fifth Avenue and crosses to the north side of the alley on Block 117. It then turns west and

United States Department of the Interior
National Park Service

**National Register of Historic Places
Continuation Sheet**

Section 10 Page 2 Columbus Commercial Historic District, Columbus, Platte County, Nebraska

crosses Twenty-fifth Avenue and continues along the northern side of the alley of Block 118 until it reaches the northeast corner of Lot 5 on the same block. Then, it turns south and runs along the east side of Lot 5, then turns west and runs along the south side of Lot 5 until it reaches Twenty-sixth Avenue. At Twenty-sixth Avenue, it heads north on the eastern edge of the street for two-and-one-half blocks, again crossing the railroad tracks until it reaches the north side of the alley of Block 84. At this point, it turns west, crosses Twenty-sixth Avenue, heads along the north side of the alley of Block 85, and crosses to the west side of Twenty-seventh Avenue. At Twenty-seventh Avenue, it turns south along the eastern edge of Lot 8, Block 86 for one-third the length of the lot. At such point, the boundary turns west and runs through Lots 8 and 7 until the western lot line of Lot 7. It then turns north and runs to the northern side of the alley of Block 86. Then, it heads west along the northern side of the alley until it reaches Twenty-eighth Avenue. It turns north and continues along the eastern edge of Twenty-eighth Avenue and crosses to the north side of Thirteenth Street. It then turns west and crosses Twenty-eighth Avenue and continues to head west until the southwest corner of Lot 7, Block 56. It then turns north and continues along the western lot line of Lot 7 and crosses the alley and continues north along the west line of Lot 2, Block 56. It then heads east along the south side of Fourteenth Street and turns south at Twenty-eighth Avenue and runs along the west side of Twenty-eighth Avenue until the south side of the alley of Block 56. The boundary then crosses to the east side of Twenty-eighth Avenue and continues to run along the south side of the alley in Block 57 and then crosses Twenty-seventh Avenue. It then runs one and one-half blocks north along the eastern side of Twenty-seventh Avenue up to the starting point at the intersection with the alley of Block 51.

Boundary Justification

The boundaries of the Columbus Commercial Historic District include the core business district of Columbus. These boundaries were selected based upon visual continuity of a grouping of buildings with architectural and historic integrity. The district is abutted by residential buildings to the north and south and either modern or low integrity commercial buildings to the east and west.

NPS Form 10-900-a
(Rev. 8-86)

United States Department of the Interior
National Park Service

**National Register of Historic Places
Continuation Sheet**

Section Photos Page 1 Columbus Commercial Historic District, Columbus, Platte County, Nebraska

COLUMBUS COMMERCIAL HISTORIC DISTRICT

Columbus, Platte County, Nebraska

Photographs by Mississippi Valley Archaeology Center (Barbara Kooiman)

November 1995, May 1996

Negatives at the Nebraska State Historical Society, Lincoln, Nebraska

The above information applies to all of the following photographs:

Photo # 1 of 38

2400 Block of Eleventh Street (south side), view facing southwest

2401-2405 Eleventh Street

2407 Eleventh Street

2409 Eleventh Street

2411 Eleventh Street

2413 Eleventh Street

2417 Eleventh Street

2419 Eleventh Street

2421 Eleventh Street

Photo # 2 of 38

2400 Block of Eleventh Street (south side), view facing southeast

2421 Eleventh Street

2419 Eleventh Street

2417 Eleventh Street

2413 Eleventh Street

2411 Eleventh Street

2409 Eleventh Street

2407 Eleventh Street

2401-2405 Eleventh Street

Photo # 3 of 38

2500 Block of Eleventh Street (south side), view facing southwest

2501 Eleventh Street

United States Department of the Interior
National Park Service

**National Register of Historic Places
Continuation Sheet**

Section Photos Page 2 Columbus Commercial Historic District, Columbus, Platte County, Nebraska

2503 Eleventh Street
2505 Eleventh Street
2507 Eleventh Street
2509 Eleventh Street
2511 Eleventh Street
2515 Eleventh Street
2517 Eleventh Street
2519 Eleventh Street
2521 Eleventh Street
2523 Eleventh Street

Photo # 4 of 38

2500 Block of Eleventh Street (south side), view facing southeast

2523 Eleventh Street
2521 Eleventh Street
2519 Eleventh Street
2517 Eleventh Street
2515 Eleventh Street
2511 Eleventh Street
2509 Eleventh Street
2507 Eleventh Street
2505 Eleventh Street
2503 Eleventh Street
2501 Eleventh Street

Photo #5 of 38

Union Pacific Depot, Twelfth Street B/W Twenty-fifth and Twenty-sixth Avenues (north side), view facing southeast

Photo # 6 of 38

2500 Block of Twelfth Street (north side), view facing northwest

2502-2504 Twelfth Street
2506 Twelfth Street
2508 Twelfth Street
2510-2512 Twelfth Street

United States Department of the Interior
National Park Service

**National Register of Historic Places
Continuation Sheet**

Section Photos Page 3 Columbus Commercial Historic District, Columbus, Platte County, Nebraska

2514 Twelfth Street
2516 Twelfth Street
1251 Twenty-sixth Avenue

Photo # 7 of 38

2500 Block of Twelfth Street (north side), view facing northeast

1251 Twenty-sixth Avenue
2516 Twelfth Street
2514 Twelfth Street
2510-2512 Twelfth Street
2508 Twelfth Street
2506 Twelfth Street
2502-2504 Twelfth Street

Photo # 8 of 38

2300 Block of Thirteenth Street (south side), view facing southwest

2301 Thirteenth Street
2307 Thirteenth Street
2309 Thirteenth Street
2313 Thirteenth Street
2317 Thirteenth Street
2319 Thirteenth Street

Photo # 9 of 38

2300 Block of Thirteenth Street (south side), view facing southeast

ca. 1265 Twenty-fourth Avenue
2319 Thirteenth Street
2317 Thirteenth Street
2313 Thirteenth Street
2309 Thirteenth Street
2307 Thirteenth Street
2301 Thirteenth Street

Photo # 10 of 38

2300 Block of Thirteenth Street (north side), view facing northwest

United States Department of the Interior
National Park Service

**National Register of Historic Places
Continuation Sheet**

Section Photos Page 4 Columbus Commercial Historic District, Columbus, Platte County, Nebraska

2304 Thirteenth Street
2312 Thirteenth Street
2314 Thirteenth Street
2318 Thirteenth Street
2320 Thirteenth Street

Photo # 11 of 38

2300 Block of Thirteenth Street (north side), view facing northwest

2320 Thirteenth Street
2318 Thirteenth Street
2314 Thirteenth Street
2312 Thirteenth Street
2304 Thirteenth Street

Photo # 12 of 38

2400 Block of Thirteenth Street (south side), view facing southwest

2403 Thirteenth Street
2405 Thirteenth Street
2407 Thirteenth Street
2409 Thirteenth Street
2411 Thirteenth Street
2415 Thirteenth Street
2417 Thirteenth Street
2423 Thirteenth Street

Photo # 13 of 38

2400 Block of Thirteenth Street (north side), view facing northwest

2402 Thirteenth Street
2406 Thirteenth Street
2408 Thirteenth Street
2410 Thirteenth Street
2416-2418 Thirteenth Street

Photo # 14 of 38

2500 Block of Thirteenth Street (south side), view facing southwest

United States Department of the Interior
National Park Service

**National Register of Historic Places
Continuation Sheet**

Section Photos Page 5 Columbus Commercial Historic District, Columbus, Platte County, Nebraska

2501 Thirteenth Street
2503 Thirteenth Street
2505 Thirteenth Street
2507 Thirteenth Street
2509 Thirteenth Street
2511 Thirteenth Street
2513 Thirteenth Street
2517 Thirteenth Street

Photo # 15 of 38

2500 Block of Thirteenth Street (north side), view facing northwest

2502-2506 Thirteenth Street
2508 Thirteenth Street
2510 Thirteenth Street
2512 Thirteenth Street
2514 Thirteenth Street
2516 Thirteenth Street
2518 Thirteenth Street
2520 Thirteenth Street
2522 Thirteenth Street
2524 Thirteenth Street

Photo # 16 of 38

2600 Block of Thirteenth Street (south side), view facing southwest

2601 Thirteenth Street
2603 Thirteenth Street
2605 Thirteenth Street
2607 Thirteenth Street
2609 Thirteenth Street
2617 Thirteenth Street
2623 Thirteenth Street

Photo # 17 of 38

2600 Block of Thirteenth Street (south side), view facing southeast

2623 Thirteenth Street

United States Department of the Interior
National Park Service

**National Register of Historic Places
Continuation Sheet**

Section Photos Page 6 Columbus Commercial Historic District, Columbus, Platte County, Nebraska

2617 Thirteenth Street
2609 Thirteenth Street
2607 Thirteenth Street
2605 Thirteenth Street
2603 Thirteenth Street
2601 Thirteenth Street

Photo # 18 of 38

Frankfort Park, 2600 Block of Thirteenth Street (north side), view facing northwest

Photo # 19 of 38

2700 Block of Thirteenth Street (south side), view facing southwest

1268-1270 Twenty-seventh Avenue
2707 Thirteenth Street
2711 Thirteenth Street
2715 Thirteenth Street
2719 Thirteenth Street
2723 Thirteenth Street

Photo # 20 of 38

2700 Block of Thirteenth Street (south side), view facing southeast

2723 Thirteenth Street
2719 Thirteenth Street
2715 Thirteenth Street
2711 Thirteenth Street
2707 Thirteenth Street
1268-1270 Twenty-seventh Avenue

Photo # 21 of 38

2700 Block of Thirteenth Street (north side), view facing northwest

1354 Twenty-seventh Avenue
2710 Thirteenth Street
2712 Thirteenth Street
2714 Thirteenth Street
2716-2718 Thirteenth Street

United States Department of the Interior
National Park Service

**National Register of Historic Places
Continuation Sheet**

Section Photos Page 7 Columbus Commercial Historic District, Columbus, Platte County, Nebraska

2720 Thirteenth Street
2724 Thirteenth Street

Photo # 22 of 38

Gottberg Garage, 2804 Thirteenth Street (north side), view facing northwest

Photo # 23 of 38

2300 Block of Fourteenth Street (south side), view facing southeast

2323 Fourteenth Street
2321 Fourteenth Street

Photo # 24 of 38

Garage, 2409 Fourteenth Street (south side), view facing southeast

Photo # 25 of 38

Columbus City Hall, 2522 Fourteenth Street (north side), view facing northeast

Photo # 26 of 38

Platte County Courthouse, 2606 Fourteenth Street (north side), view facing northeast

Photo # 27 of 38

Schmid Apartments, 2805 Fourteenth Street (south side), view facing southwest

Photo # 28 of 38

1200 Block of Twenty-third Avenue (west side), view facing southwest

1264 Twenty-third Avenue
2301 Thirteenth Street

Photo # 29 of 38

Columbus Fuel and Storage, 1260-1262 Twenty-fourth Avenue (west side), view facing northwest

Photo # 30 of 38

1000 Block of Twenty-fifth Avenue (east side), view facing southeast

2421 Eleventh Street

United States Department of the Interior
National Park Service

**National Register of Historic Places
Continuation Sheet**

Section Photos Page 8 Columbus Commercial Historic District, Columbus, Platte County, Nebraska

1065 Twenty-fifth Avenue
1061 Twenty-fifth Avenue
1059 Twenty-fifth Avenue

Photo # 31 of 38

1200 Block of Twenty-fifth Avenue (east side), view facing northeast
1263 Twenty-fifth Avenue
1265 Twenty-fifth Avenue

Photo # 32 of 38

1200 Block of Twenty-fifth Avenue (west side), view facing northwest
2501-2504 Twelfth Street
1258-1260 Twenty-fifth Avenue
2501 Thirteenth Street

Photo # 33 of 38

1000 Block of Twenty-sixth Avenue (east side), view facing southeast
2523 Eleventh Street
1069 Twenty-sixth Avenue
1067 Twenty-sixth Avenue
1061 Twenty-sixth Avenue
1059 Twenty-sixth Avenue

Photo # 34 of 38

Mead Bldg. Center Co., 1158 Twenty-sixth Avenue (north side), view facing northwest

Photo # 35 of 38

1200 Block of Twenty-sixth Avenue (east side), view facing northeast
1251 Twenty-sixth Avenue
1255 Twenty-sixth Avenue
1257 Twenty-sixth Avenue
1259 Twenty-sixth Avenue
1263 Twenty-sixth Avenue
1265 Twenty-sixth Avenue
1267 Twenty-sixth Avenue

NPS Form 10-900-a
(Rev. 8-86)

United States Department of the Interior
National Park Service

**National Register of Historic Places
Continuation Sheet**

Section Photos Page 9 Columbus Commercial Historic District, Columbus, Platte County, Nebraska

Photo # 36 of 38

1200 Block of Twenty-seventh Avenue (west side), view facing northwest

1260 Twenty-seventh Avenue

1264 Twenty-seventh Avenue

1266 Twenty-seventh Avenue

1268-1270 Twenty-seventh Avenue

Photo # 37 of 38

1200 Block of Twenty-seventh Avenue (west side), view facing southwest

1268-1270 Twenty-seventh Avenue

1266 Twenty-seventh Avenue

1264 Twenty-seventh Avenue

1260 Twenty-seventh Avenue

Photo # 38 of 38

1300 Block of Twenty-seventh Avenue (west side), view facing southwest

1356-1362 Twenty-seventh Avenue

1354 Twenty-seventh Avenue

**Columbus Commercial Historic District
Property Owners' List
Current as of 1 May 1996**

Site No.	Address of property	Owner's name	Owner's address
PT01-489	2401-2405 11th St.	Kathy Wetjen Curry Honda Shop	8005 Spaulding Ct., Omaha, NE 68134 805 23rd St., Columbus, NE 68601
PT01-488	2407 11th St.	Debbie Kresha	1903 9th St., Columbus, NE 68601
-----	2407.5 11th St.	Debbie Kresha	1903 9th St., Columbus, NE 68601
PT01-487	2409 11th St.	John Johnson	223 Sixth St., Columbus, NE 68601
PT01-486	2411 11th St.	Jean Sharman	1922 15th St., Columbus, NE 68601
PT01-073	2413 11th St.		
PT01-072	2417 11th St.	G.H. Brazeal	304 Pershing Rd., Columbus, NE 68601
PT01-485	2419 11th St.	Joe Bordy, Steve Bordy	107 Cottonwood Dr., Columbus, NE 68601 #23 Lottie Ln, Columbus, NE 68601
PT01-484	2421 11th St.	Kenneth Greiner, Sr.	#6 Beaver Lodge, Columbus, NE 68601
PT01-071	2501 11th St.	Rick Briggs	909 Fifth St., Columbus, NE 68601
PT01-070	2503 11th St.	Dale Rosenberry	2503 ½ Eleventh St., Columbus, NE 68601
PT01-069	2505 11th St.	Larry Fox	2111 31st St., Columbus, NE 68601
PT01-481	2507 11th St.	William Held	1822 11th St., Columbus, NE 68601
PT01-480	2509 11th St.	Lavern Krings	119 N. Roselane, Columbus, NE 68601
PT01-479	2511 11th St.	Dolores Kneifel	2815 10th St., Columbus, NE 68601
PT01-478	2513-2515 11th St.		
PT01-477	2517 11th St.	Don Kiser Bob Olson	1160 46th Ave., Columbus, NE 68601 2773 N. Park Lane, Columbus, NE 68601
PT01-476	2519 11th St.		
PT01-475	2521 11th St.	Steve & Michelle Wetjen	3218 15th St., Columbus, NE 68601
PT01-067	2523 11th St.	Daniel Foglend & Christine Swanson	2222 W. 2nd St., Grand Island, NE 68803
PT01-090	2502-2504 12th St.	Frank Micek	2809 9th St., Columbus, NE 68601
PT01-473	2506 12th St.	Frank Micek	2809 9th St., Columbus, NE 68601
-----	2508 12th St.	Frank Micek	2809 9th St., Columbus, NE 68601

-----	2510- 2512 12th St.	Tom Anderson Dan Nebuda	1341 98th St., Columbus, NE 68601 3119 32nd St., Columbus, NE 68601
-----	2514 12th St.		
PT01-472	2516 12th St.	James Uhlmann	2023 17th St., Columbus, NE 68601
PT01-091	12th St. B/W 25th & 26th Aves. (2511 12th St.)	U.P.R.R. Manager, Acct. Payable	P.O. Box 1605, Omaha, NE
PT01-121	2301 13th St.	Cornhusker Office Supply	1264 23rd Ave., Columbus, NE 68601
PT01-122	2304 13th St.	Edward Neilsen	1860 W. Camino Real, Columbus, NE 68601
PT01-120	2307 13th St.	Kevin Johnson	3009 Timberedge Dr., Columbus, NE 68601
PT01-119	2309 13th St.	Fremont Office Supply, Manager, John Rains	2309 13th St., Columbus, NE 68601
-----	2312 13th St.		
PT01-118	2313 13th St.	Walter Otto	2313 13th St., Columbus, NE 68601
PT01-447	2314 13th St.	Gary Abbott	1 Thundershore Dr., Columbus, NE 68601
PT01-117	2317 13th St.	Kump, Langan & Schoeph	2317 13th St., Columbus, NE 68601
PT01-123	2318 13th St.	Gary Abbott	1 Thundershore Dr., Columbus, NE 68601
PT01-116	2319 13th St.	Dean Soulliere	1470 25th Ave., Columbus, NE 68601
PT01-448	2320 13th St.	Jon Weil	2563 45th Ave., Columbus, NE 68601
PT01-115	2402 13th St.	Carolyn Legenza	RR 3. Box 220, Columbus, NE 68601
PT01-114	2403 13th St.		
PT01-113	2405 13th St.	Roger Yates	2405.5 13th St., Columbus, NE 68601
PT01-124	2406 13th St.		
PT01-112	2407 13th St.	Joe Daly	no address listed
PT01-125	2408 13th St.	Wendall Walters	2254 22nd Ave., Columbus, NE 68601
PT01-111	2409 13th St.	Oneta Nitz	312 Morton Rd., Columbus, NE 68601
-----	2410 13th St.	See above	
PT01-449	2411 13th St.	John Mahoney	45 Stires Lake, Columbus, NE 68601 e
----	2415 13th St.	William Curry III	127 N. Parkway, Columbus, NE 68601
-----	2416-2418 13th St.	Jeff Chleboun	1175 8th St., Schuyler, NE 68661

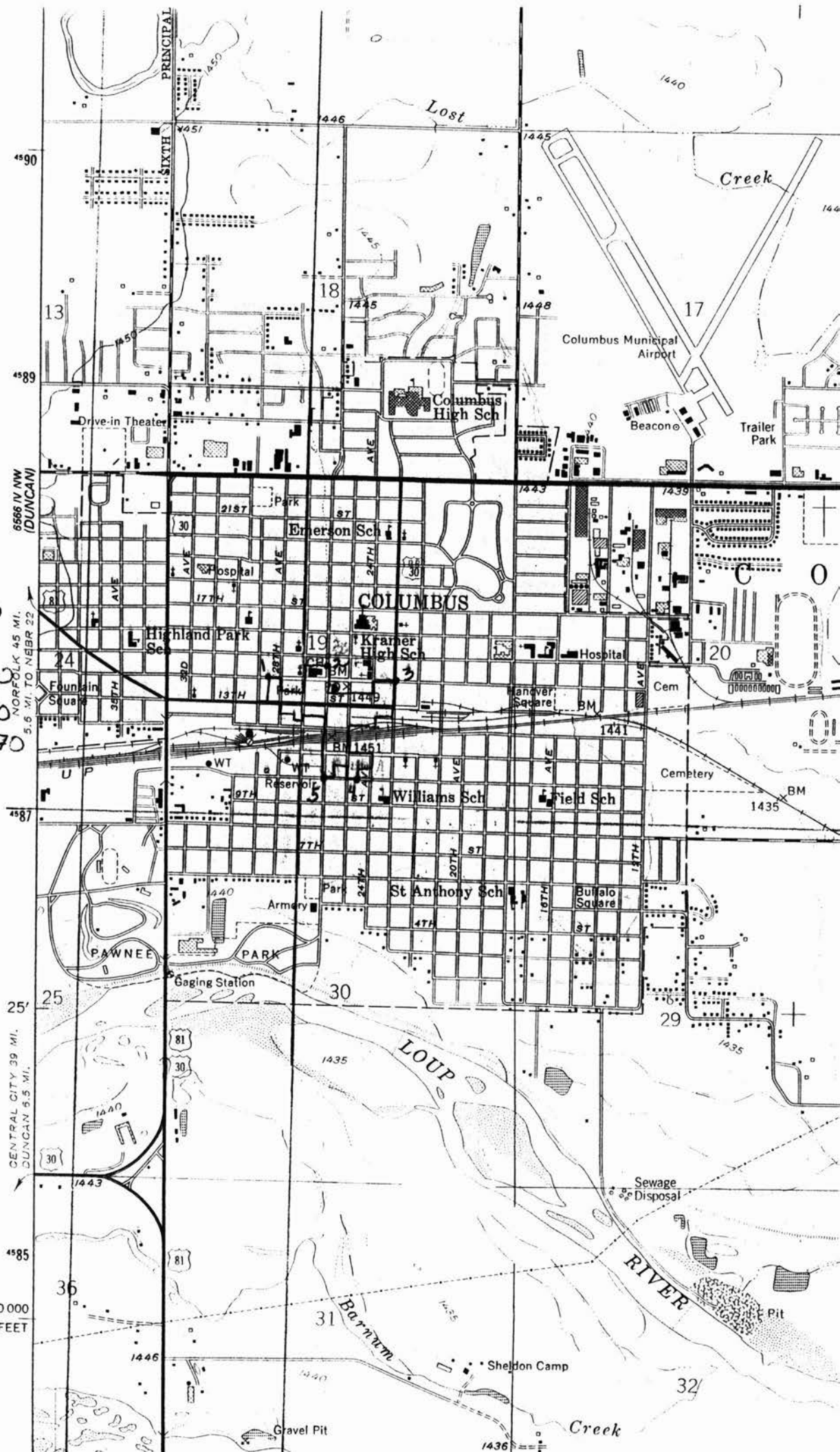
PT01-450	2417 13th St.	(2419) Gene Friederich	no address listed
PT01-108	2423 13th St.	Neil Jensen	3 Cottonwood Dr., Columbus, NE 68601
PT01-107	2501 13th St.	Columbus Bank	2501 13th St., Columbus, NE 68601
PT01-126	2502-2506 13th St.	James Ferguson	109 W. Parkway, Columbus, NE 68601
PT01-106	2503 13th St.	Mrs. Ben Teller	2503 13th St., Columbus, NE 68601
-----	2505 13th St.		
PT01-451	2507 13th St.	Craig Stephen	Rt. 3, Columbus, NE 68601
PT01-453	2508 13th St.	Ron Saalfeld	2704 16th St., Columbus, NE 68601
PT01-105	2509 13th St.	Tom Bogus	2869 18th Ave., Columbus, NE 68601
PT01-454	2510 13th St.	Anne Wagner	10 Lakeshore Dr., Columbus, NE 68601
PT01-104	2511 13th St.	LaVern Krings	119 N. Roselane, Columbus, NE 68601
PT01-455	2512 13th St.		
PT01-103	2513 13th St.	Dave Placek	1269 26th Ave., Columbus, NE 68601
PT01-127	2514 13th St.	Mike Moser	2657 James Pl., Columbus, NE 68601
PT01-456	2516 13th St.	Bill Sinsabaugh	13548 Pavillion Dr., Sun City West, AZ 85375
PT01-452	2517 13th St.	Mrs. Sammie Lind	no address available
PT01-457	2518 13th St.	Mrs. Harry Becker	1821 27th St , Columbus, NE 68601.
PT01-458	2520 13th St.	Dan Jochum	83 Cottonwood Dr., Columbus, NE 68601
PT01-459	2522 13th St.	Dan Mahoney	963 25th Ave., Columbus, NE 68601
PT01-128	2524 13th St.	Dan Mahoney	963 25th Ave., Columbus, NE 68601
PT01-102	2601 13th St.		
PT01-101	2603 13th St.		
-----	2605 13th St.		
-----	2607 13th St.		
PT01-100	2609 13th St.	Dick Tooley	3021 15th St., Columbus, NE 68601
-----	2617 13th St.	Dick Tooley	3021 15th St., Columbus, NE 68601
-----	2623 13th St.		
PT01-097	2707 13th St.	Bill Simpson	Box 248, Columbus, NE 68601
PT01-469	2710 13th St.	Mary Stewart	3113 Cottonwood, Omaha, NE 68134
PT01-096	2711 13th St.	Eugene Bernt	RR 1, Shelby, NE 68662

-----	2712 13th St.	Dale Kaven	2714 13th St., Columbus, NE 68601
-----	2714 13th St.	Dale Kaven	2714 13th St., Columbus, NE 68601
-----	2715 13th St.	Larrell Aikens	n o address listed
PT01-470	2716-2718 13th St.	Ken Nitz	312 Morton Rd., Columbus, NE 68601
PT01-095	2719 13th St.	Ernie & Phyllis Cunningham	4122 Sunset Dr., Columbus, NE 68601
PT01-471	2720 13th St.	Paul Abegglen	110 W. Parkway, Columbus, NE 68601
PT01-094	2723 13th St.	Jeffrey See	56 Cottonwood Dr., Columbus, NE 68601
-----	2724 13th St.	Dr. Craig Riley	2 Driftwood Dr., Columbus, NE 68601
PT01-003	2804 13th St.	(2802) Mac Hull	3321 Breakwater Pl., Columbus, NE 68601
PT01-445	2321 14th St.	Geanne Grimes	3110 14th St., Columbus, NE 68601
PT01-444	2323 14th St/1365 24th Ave.	Trowbridge Motors	1365 24th Ave., Columbus, NE 68601
PT01-136	2409 14th St.	Garage	
PT01-140*	2522 14th St.	City of Columbus	2414 14th St., Columbus, NE 68601
PT01-001	2606 14th St.	Platte County	2606 14th St., Columbus, NE 68601
PT01-132	B/W 13th & 14th & 26th & 27th	City of Columbus	2414 14th St., Columbus, NE 68601
PT01-144*	2805 14th St.	Grace Schmid	2805 14th St., Columbus, NE 68601
PT01-446	1264 23rd Ave.		
PT01-088	1260-1262 24th Ave.	Bill Soulliere, Sr.	3061 Fairlane Ave., Columbus, NE 68601
-----	ca. 1265 24th Ave.		
PT01-482	1059 25th Ave.	Mrs. Earl Miller	Parkview Trailer Court, Columbus, NE 68601
----	1061 25th Ave.	Sidney Hasselquist	2236 36th Ave., Columbus, NE 68601
PT01-483	1065 25th Ave.		
PT01-089	1258-1260 25th Ave.	Ron Bernt	2711 19th St., Columbus, NE 68601
PT01-110	1263 25th Ave.	Michelle Soulliere	1770 32nd Ave., Columbus, NE 68601
PT01-109	1265 25th Ave.		
-----	1362 25th Ave.		
PT01-474	1059 26th Ave.	Jerry Jarecke	3109 6th St., Columbus, NE 68601

PT01-068	1061 26th Ave.	Francis Micek	2809 9th St., Columbus, NE 68601
----	1067 26th Ave.	Harold Keil	3111 16th St., Columbus, NE 68601
PT01-497	1069 26th Ave.	Harold Keil	3111 16th St., Columbus, NE 68601
-----	1158 26th Ave.	(1165) Mead Building Center	Box 878, Columbus, NE 68601
PT01-092	1251 26th Ave.	Neil Jensen	#3 Cottonwood Dr., Columbus, NE 68601
PT01-466	1255 26th Ave.	Neil Jensen	#3 Cottonwood Dr., Columbus, NE 68601
PT01-093	1257 26th Ave.	James Uhlmann	2023 17th Ave., Columbus, NE 68601
-----	1259 26th Ave.	(1261) James Prokupek	2672 43rd Ave., Columbus, NE 68601
PT01-463	1262 26th Ave.	Robert Brehm	2004 15th St., Columbus, NE 68601
PT01-462	1263 26th Ave.	Clair Huggler	2765 39th Ave. , Columbus, NE 68601
PT01-464	1264 26th Ave.	Dave Placek	1269 26th Ave., Columbus, NE 68601
PT01-130	1265 26th Ave.	Ellene Saunders	102 S. Roselane, Columbus, NE 68601
PT01-465	1266 26th Ave.	Ronald Saafeld	2704 16th St., Columbus, NE 68601
PT01-129	1267 26th Ave.	Marcia GeilenKirchen	119 S. Parkway, Columbus, NE 68601
PT01-460	1359 26th Ave.	William Kurtenbach	1359 26th Ave., Columbus, NE 68601
PT01-461	1361 26th Ave.	Wilbur Johnson	1361 26th Ave., Columbus, NE 68601
PT01-467	1260 27th Ave.	Rich Jablonski	3515 19th St., Columbus, NE 68601
PT01-468	1264 27th Ave.	Tom Goc	1264 27th Ave., Columbus, NE 68601
PT01-099	1266 27th Ave.	Lyle Ernst	Box 8, Columbus, NE 68601
PT01-098	1268-1270 27th Ave.	Schwesers	1270 27th Ave., Columbus, NE 68601
PT01-131	1354 27th Ave.	John French	1639 Behlen, Columbus, NE 68601
-----	1356-1362 27th Ave.	Ken Huntley	1104 5th St., Columbus, NE 68601

Columbus Commercial
Historic District
Columbus, Platte County
Nebraska

- UTM References
1. 14-636840-4587630
 2. 14-637110-4587690
 3. 14-637430-4587630
 4. 14-637260-4587170
 5. 14-637110-4587170



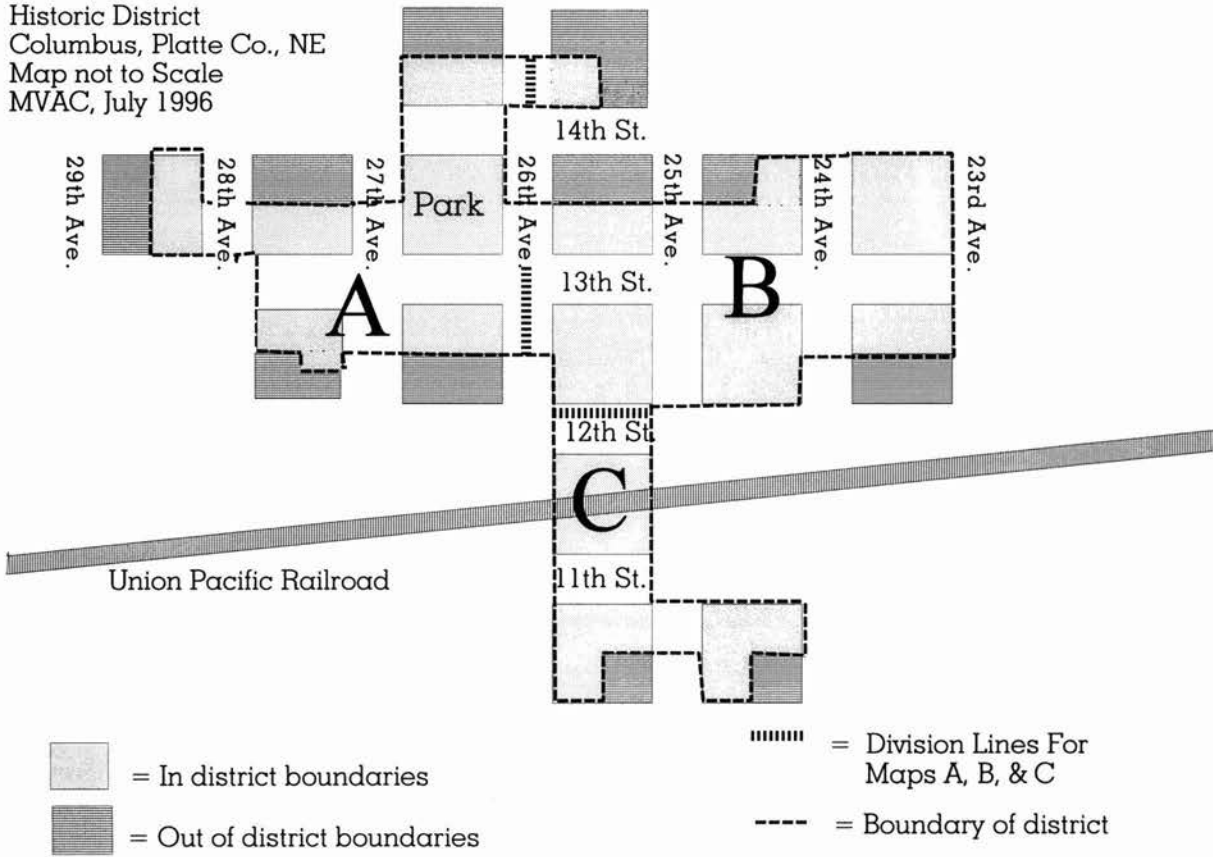
5566 N NW
(DUNCAN)

NORFOLK 4.5 MI.
5.6 MI. TO NEBR 22

CENTRAL CITY 39 MI.
DUNCAN 5.5 MI.



640 000
FEET

Columbus Commercial
Historic District
Columbus, Platte Co., NE
Map not to Scale
MVAC, July 1996

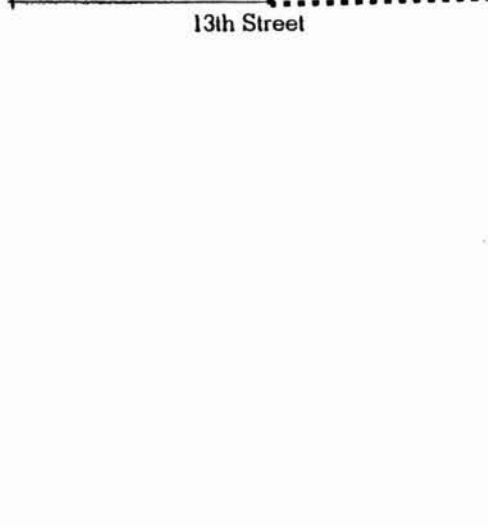
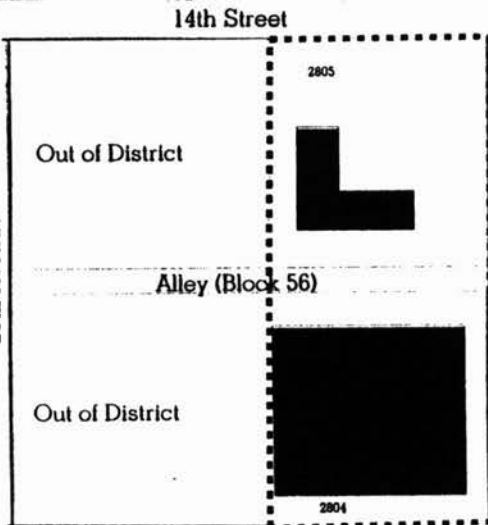
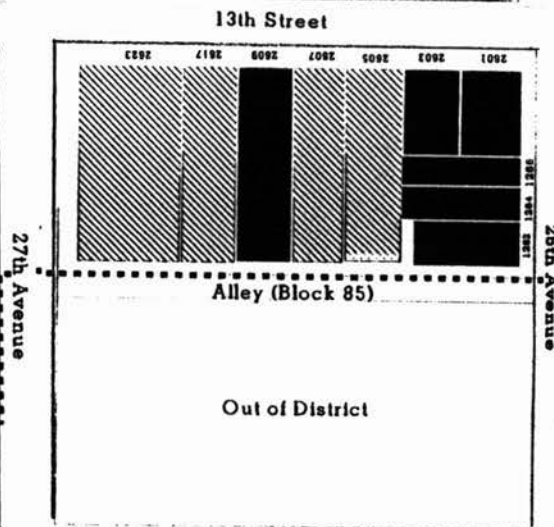
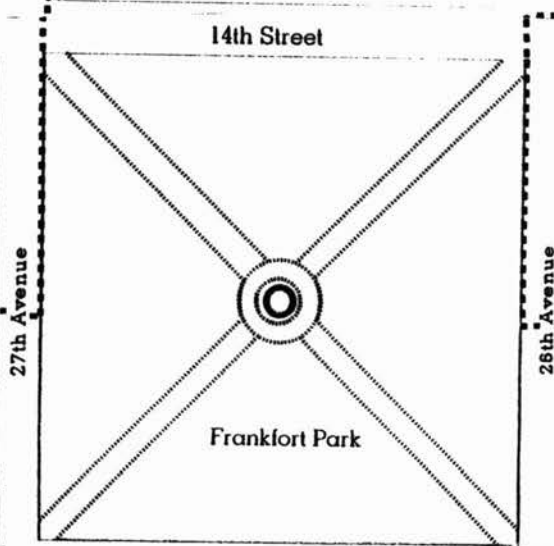
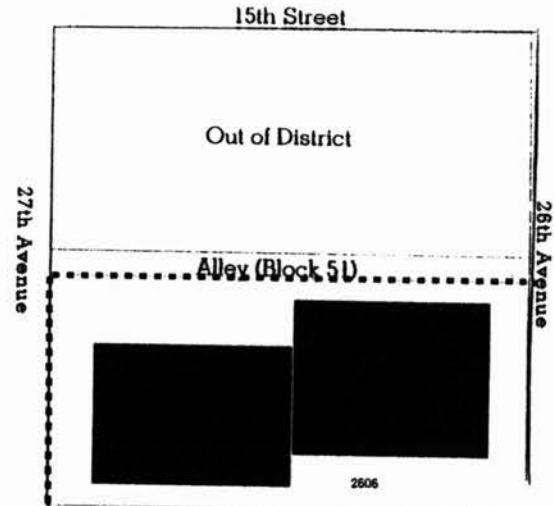


Map Key: A

Columbus Commercial Historic District, Columbus, Platte County, Nebraska

-  = Contributing to district
-  = Noncontributing to district
- - - - = Boundary of District

Prepared by MVAC
July 1996
Map Not To Scale



26th Avenue

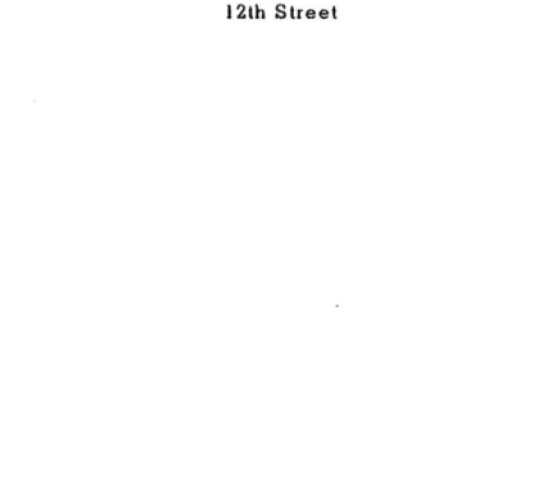
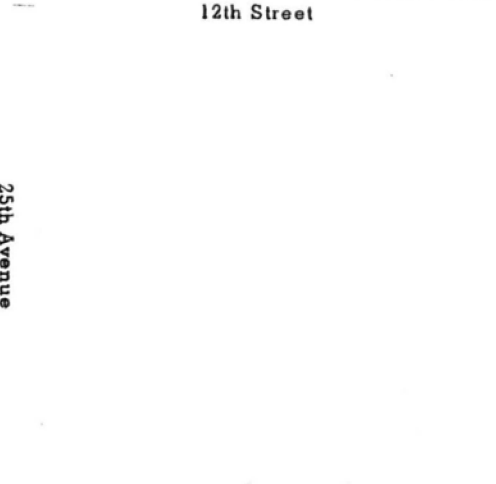
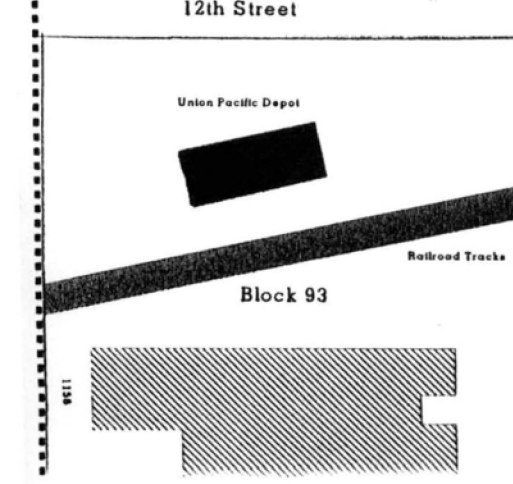
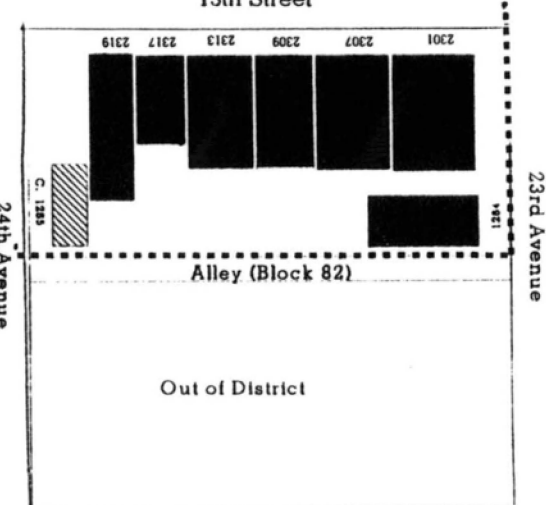
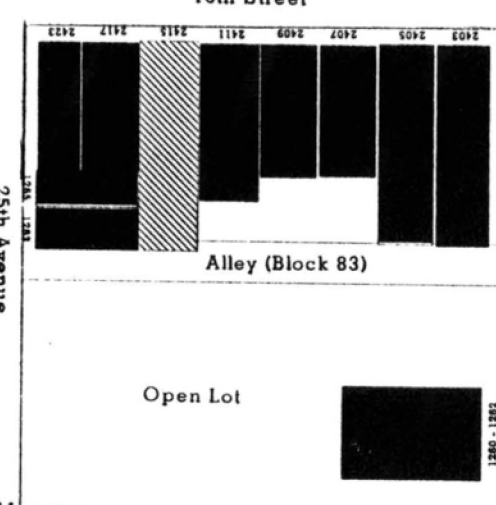
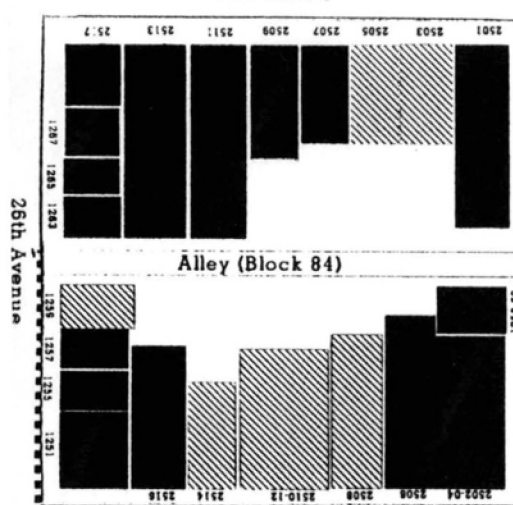
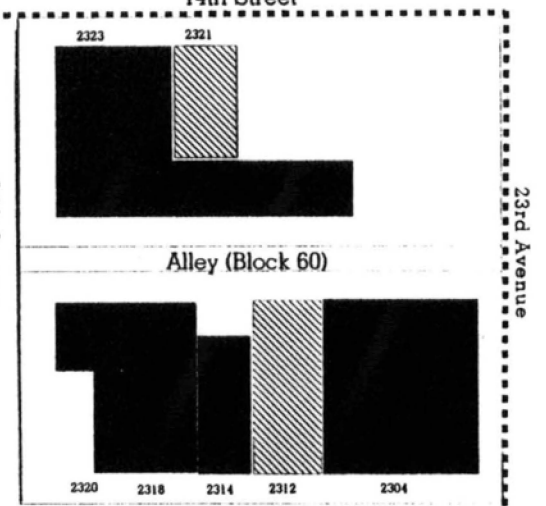
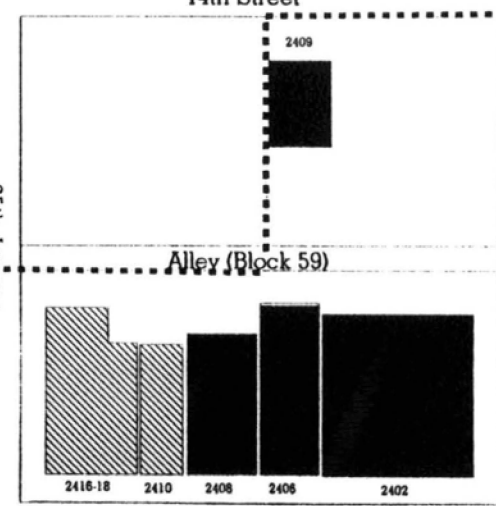
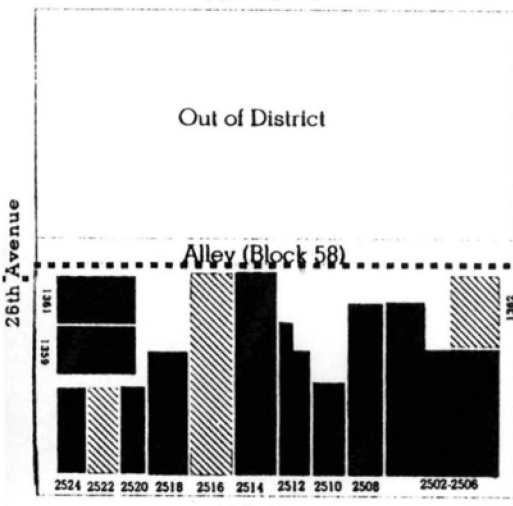
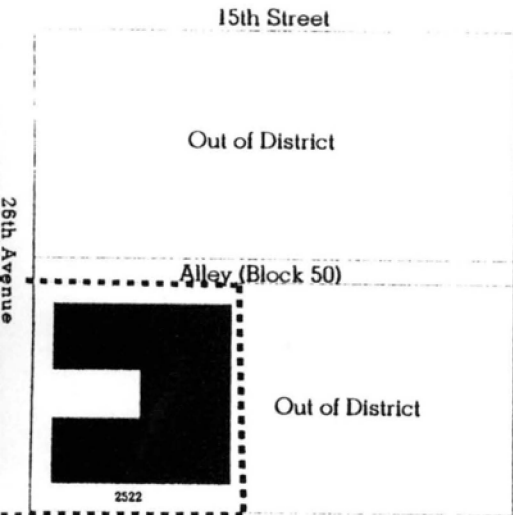
Map Key: B

Columbus Commercial Historic District, Columbus, Platte County, Nebraska

- = Contributing to district
- ▨ = Noncontributing to district
- - - = Boundary of District



Prepared by MVAC
July 1996
Map Not To Scale



12th Street

12th Street

12th Street

26th Avenue

25th Avenue

Union Pacific Depot

Railroad Tracks

Block 93

118

11th Street

11th Street

26th Avenue

25th Avenue

24th Avenue

Alley (Block 118)


Alley (Block 117)


10th Street

10th Street

Map Key: C

Columbus Commercial Historic District, Columbus, Platte County, Nebraska

 = Contributing to district

 = Noncontributing to district

 = Boundary of District



Prepared by MVAC
July 1996
Map Not To Scale



9/5/23 2400 Block 11th St. (South side)
Columbus Commercial Historic District

-5 Platte County, Nebraska

Photo # 1 of 38



9511/22

-26

2400 BIK 11th St. (south side)
Columbus Commercial Historic District
Platte County, Nebraska
Photo # 2 of 38



5/1/22 2500 BIK 11th St. (south side)
Columbus Commercial Historic District

-27 Platte County Nebraska

Photo # 3 of 38



5/11/22 2500 BIK 11th St. (south side)

Columbus Commercial Historic District

-6

Platte County, Nebraska

Photo # 4 of 38



Union Pacific Depot
Columbus Commercial Historic District
Platte County, Nebraska
Photo # 5 & 38

9511/21

-23



9511/21

2500 BIK 12th St. (north side)
Columbus Commercial Historic District
Platte County, Nebraska
Photo # 6 of 38

-29



95/1/21

2500 BIK 12th St. (NORTH side)
Columbus Commercial Historic District
Platte County, Nebraska

-27

Photo # 7 of 38



19 RICKERT 10

Cornhusker
OFFICE SUPPLY

7000 Day & Night Day



MOUNT OFFICE EQUIPMENT

WELLS FARGO

9511/18

-26

2300 BIK 13th ST. (south side)
Columbus Commercial Historic District
Platte County, Nebraska
Photo 8 of 38



9511/19

-11

2300 BIK 13th St. (south side)
Columbus Commercial Historic District
Platte County, Nebraska
Photo # 9 of 38



FORD
WILSON
LINCOLN

CHEVROLET
BUICK
WILSON

WILSON
CHEVROLET
BUICK

9511/18

25

2300 BIK 13th St. (NORTH side)
Columbus Commercial Historic District
Platte County, Nebraska
Photo #10 of 38



9511 A19

9

2300 BIK 13th St. (NORTH SIDE)
Columbus Commercial Historic District
Platte County, Nebraska
Photo #11 of 38



9511/19

-13

2400 BIK 13th St. (south side)

Columbus Commercial Historic District

Platte County, Nebraska

Photo # 12 of 38



2/1/19
-15

2400 BIK 13th St. (North side)
Columbus Commercial Historic District
Platte County, Nebraska
Photo #13 of 38



9/11/19

-33

2500 BIK 13th St. (south side)
Columbus Commercial Historic District
Platte County, Nebraska
Photo # 14 of 38



9511/19

2500 BIK 13th St (North Side)
Columbus Commercial Historic District

-35

Platte County, Nebraska

Photo # 15 of 38



9511/20

-27

2600 BIK 13th St. (south side)
Columbus Commercial Historic District
Platte County, Nebraska
Photo # 16 of 38



9511/21

2600 B/K 13th St. (south side)
Columbus Commercial Historic District

-10

Platte County, Nebraska

Photo #17 of 38



9/11/20

-29

FRANKFORT PARK
Columbus Commercial Historic District
Platte County, NEBRASKA
Photo #18 of 38



9605/1

-5

2700 BIK 13th St. (south side)
Columbus Commercial Historic District
Platte County, Nebraska
Photo # 19 of 38



9605/1

2700 BIK 13th St. (south side)
Columbus Commercial Historic District

-13

Platte County, Nebraska

Photo #20 of 38



9605/1

2700 BIK 13th St. (NORTH side)

Columbus Commercial Historic District

Platte County, Nebraska

Photo # 21 of 38

-3



9/5/21

-20

Gottberg Garage, 2804 13th St.
Columbus Commercial Historic District
Platte County, Nebraska
Photo #22 of 38



9511/18

-20

2300 BIK 14th St (south side)
Columbus Commercial Historic District
Platte County, Nebraska
Photo # 23 of 38



9511/18

Garage, 2409 14th St.

Columbus Commercial Historic District

Platte County, Nebraska

Photo # 24 of 38

-17



9511/18

Photo #25 of 38

Columbus City Hall, 2522 14th St.

Columbus Commercial Historic District

Platte County, Nebraska

-11



9/5/13

Photo # 26 of 38

Platte County Courthouse, 2604 14th St

Columbus Commercial Historic District

-9

Platte County, Nebraska



Photo # 27 of 38

Schmid Apartments, 2805 14th St (south side)

Columbus Commercial Historic District

Platte County, NEBRASKA

Photo taken by MVAC

Nov. 1995

Negatives @ NSHS

View Facing southwest

5-

8/11/56



9511/18

-28

1200 BIK 23RD Avenue (west side)
Columbus Commercial Historic District
Platte County, Nebraska

Photo # 28 of 38



9605/1

Columbus Fuel + STORAGE
Columbus Commercial Historic District
Platte County, Nebraska
Photo # 29 of 38

-29



9/5/22

1000 BIK 25th Avenue (east side)
Columbus Commercial Historic District

-24

Platte County, Nebraska

Photo # 30 of 38



9605/1

1200 BIK 25th Avenue (east side)
Columbus Commercial Historic District

-24

Platte County, Nebraska

Photo # 31 of 38



9511/21

-31

1200 BIK 25th Avenue (west side)
Columbus Commercial Historic District
Platte County, Nebraska
Photo #32 of 38



9511/22

1000 BIK 26th Avenue (east side)

Columbus Commercial Historic District

Platte County, Nebraska

Photo # 33 of 38



9511/23

Mead Bldg Center Company
Columbus Commercial Historic District
Platte County, Nebraska
Photo # 34 & 38

-16



9511/21

1200 BIK 24th Avenue (east side)
Columbus Commercial Historic District
- 24 Platte County, Nebraska
Photo # 35 of 38



9605/1

1200 BIK 27th Avenue (west side)
Columbus Commercial Historic District

Platte County, Nebraska

Photo # 360638

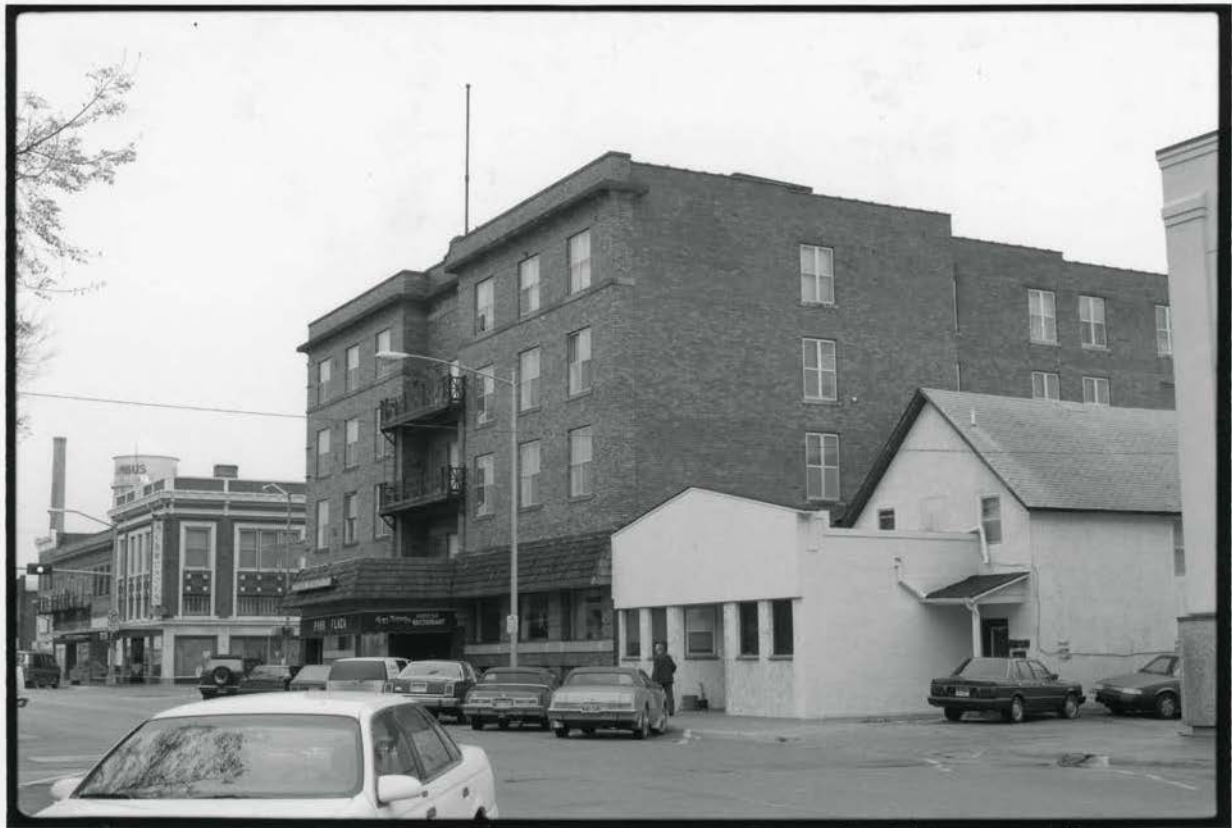
-10



9511/21

-2

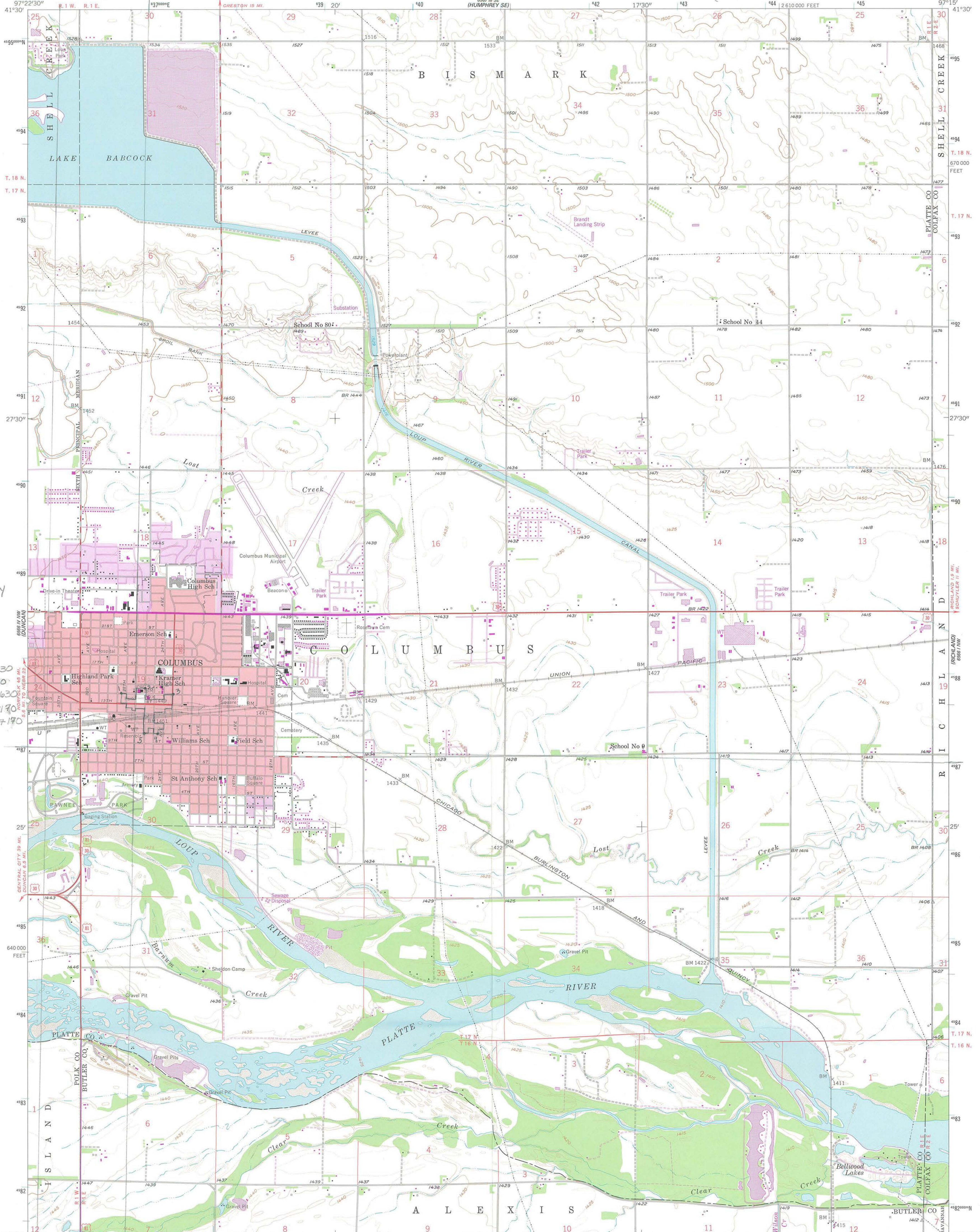
1200 BIK 27th Avenue (west side)
Columbus Commercial Historic District
Platte County, Nebraska
Photo #37 of 38



9605/1

1300 BIK 27th Avenue (west side)
Columbus Commercial Historic District
Platte County, Nebraska
Photo # 38 of 38

-9



Columbus Commercial
Historic District
Columbus, Platte County
Nebraska

- DTM References
1. 14-636840-4587630
 2. 14-637110-4587690
 3. 14-637430-4587620
 4. 14-637260-4587190
 5. 14-637110-4587170

31.44

Mapped, edited, and published by the Geological Survey as part of the Department of the Interior program for the development of the Missouri River Basin Control by USGS and USCGS

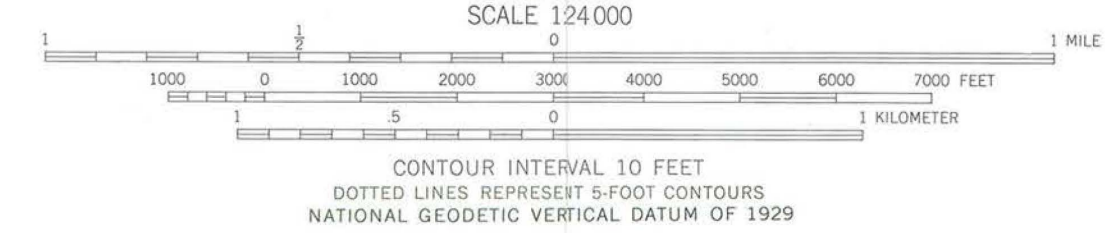
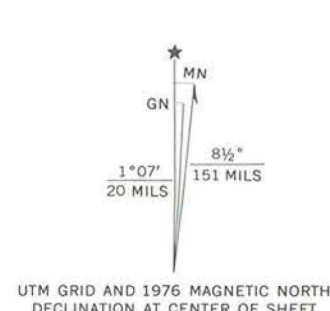
Topography from aerial photographs by Kelsh plotter and by planetable surveys 1958. Aerial photographs taken 1951

Polyconic projection. 1927 North American datum 10,000-foot grid based on Nebraska coordinate system, south zone 1000-meter Universal Transverse Mercator grid ticks, zone 14, shown in blue

Red tint indicates area in which only landmark buildings are shown

Revisions shown in purple compiled from aerial photographs taken 1976. This information not field checked

Purple tint indicates extension of urban areas



ROAD CLASSIFICATION

Heavy-duty	Light-duty
Medium-duty	Unimproved dirt
U.S. Route	



THIS MAP COMPLIES WITH NATIONAL MAP ACCURACY STANDARDS
FOR SALE BY U.S. GEOLOGICAL SURVEY, DENVER, COLORADO 80225, OR RESTON, VIRGINIA 22092
A FOLDER DESCRIBING TOPOGRAPHIC MAPS AND SYMBOLS IS AVAILABLE ON REQUEST

COLUMBUS, NEBR.
N 4122.5-W 9715/7.5
1958
PHOTOREVISED 1976
AMS 6566 IV NE-SERIES V875

UNITED STATES DEPARTMENT OF THE INTERIOR
NATIONAL PARK SERVICE

NATIONAL REGISTER OF HISTORIC PLACES
EVALUATION/RETURN SHEET

REQUESTED ACTION: NOMINATION

PROPERTY Columbus Commercial Historic District
NAME:

MULTIPLE
NAME:

STATE & COUNTY: NEBRASKA, Platte

DATE RECEIVED: 10/15/96 DATE OF PENDING LIST: 10/30/96
DATE OF 16TH DAY: 11/15/96 DATE OF 45TH DAY: 11/29/96
DATE OF WEEKLY LIST:

REFERENCE NUMBER: 96001353

NOMINATOR: STATE

REASONS FOR REVIEW:

APPEAL: N DATA PROBLEM: N LANDSCAPE: N LESS THAN 50 YEARS: N
OTHER: N PDIL: N PERIOD: N PROGRAM UNAPPROVED: N
REQUEST: N SAMPLE: N SLR DRAFT: Y NATIONAL: N

COMMENT WAIVER: N

ACCEPT RETURN REJECT 11.21.99 DATE

ABSTRACT/SUMMARY COMMENTS:

RECOM./CRITERIA _____

REVIEWER _____ DISCIPLINE _____

TELEPHONE _____ DATE _____

DOCUMENTATION see attached comments Y/N see attached SLR Y/N



NEBRASKA STATE HISTORICAL SOCIETY

1500 R STREET, P.O. BOX 82554, LINCOLN, NE 68501-2554
(402) 471-3270 Fax: (402) 471-3100 Museum Fax: (402) 471-3314

October 8, 1996

Ms. Carol Shull
Chief of Registration
National Register of Historic Places
1100 L Street, NW
Washington, DC 20240

RE: Columbus Commercial Historic District
roughly bounded by 14th Street, 23rd Avenue, 11th Street, and
29th Avenue, Columbus, Platte County, Nebraska

Dear Ms. Shull:

Please find enclosed the National Register of Historic Places nomination form for the above property. This nomination has met all notification and other requirements as established in 36 CFR 60.

If you have any questions concerning this nomination, please let me know.

Sincerely,

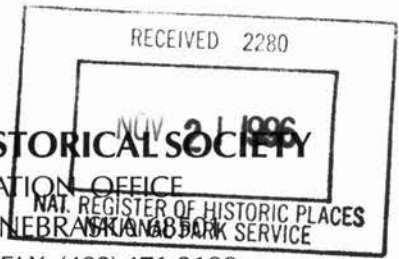
L. Robert Puschendorf
Deputy State Historic Preservation Officer

PT01-



TRANSMITTAL LETTER

NEBRASKA STATE HISTORICAL SOCIETY
STATE HISTORIC PRESERVATION OFFICE
P.O. BOX 82554, LINCOLN, NEBRASKA 68508
PHONE: (402) 471-4787 FAX: (402) 471-3100



TO: LINDA McCLELLAND DATE: 11-13-96
NATIONAL REGISTER of HISTORIC PLACES
1100 L STREET, NW
WASHINGTON DC 20240

RE: maps SITE/ HP/ PROJECT #

WE TRANSMIT (X) BOUNDARY maps of COLUMBUS DISTRICT

WE REQUEST ()

FOR YOUR:

- () approval () use () information
() review and comment () record ()
() completion and return () distribution

THE FOLLOWING INFORMATION:

- () General Program () Planning () Grant Program
() Survey () Tax Incentive () Local Government
() National Register () Review and Compliance () Technical

(X) ENCLOSED ARE 4 BOUNDARY maps of THE
COLUMBUS COMMERCIAL HISTORIC DISTRICT LOCATED IN
COLUMBUS, PLATTE COUNTY, NEBRASKA.

Receipt of Requested Information will be required in order to complete processing of your request.

REMARKS

COPIES TO:

BY: Teresa Fatemu

PHONE: 402 471-4768