



1. Building 202, Type A  
Senior Officer's Quarters Historic  
District
2. Maxwell Air Force Base, AL
3. Base photo lab
4. 7 September 1984
5. Civil Engineering, Building 78
6. Front of Building facing north
7. Photograph 1.



1. Building 202, Type A  
Senior Officer's Quarters Historic  
District
2. Maxwell Air Force Base, AL
3. Base photo lab
4. 7 September 1984
5. Civil Engineering, Building 78
6. Rear oblique of building facing south-  
west
7. Photograph 2





1. Building 202, Type A  
Senior Officer's Quarters Historic  
District
2. Maxwell Air Force Base, AL
3. Base photo lab
4. 7 September 1984
5. Civil Engineering, Building 78
6. Rear oblique of building facing south-  
east
7. Photograph 3



1. Building 102, Type B  
Senior Officer's Quarters Historic  
District
2. Maxwell Air Force Base, AL
3. Base photo lab
4. 7 September 1984
5. Civil Engineering, Building 78
6. Front of building facing east
7. Photograph 4



1. Building 102, Type B  
Senior Officer's Quarters Historic  
District
2. Maxwell Air Force Base, AL
3. Base photo lab
4. 7 September 1984
5. Civil Engineering, Building 78
6. Rear oblique of building facing north-  
west
7. Photograph 5





1. Building 102, Type B  
Senior Officer's Quarters Historic  
District
2. Maxwell Air Force Base, AL
3. Base photo lab
4. 7 September 1984
5. Civil Engineering, Building 78
6. Rear oblique of building facing south-  
west
7. Photograph 6



1. Building 104, Type C
2. Senior Officer's Quarters Historic District
3. Maxwell Air Force Base, AL
4. Base photo lab
5. 7 September 1984
6. Civil Engineering, Building 78
7. Front of building facing east
7. Photograph 7



1. Building 104, Type C
2. Senior Officer's Quarters Historic District
2. Maxwell Air Force Base, AL
3. Base photo lab
4. 7 September 1984
5. Civil Engineering, Building 78
6. Rear oblique of building facing southwest
7. Photograph 8



1. Building 104, Type C  
Senior Officer's Quarters Historic  
District
2. Maxwell Air Force Base, AL
3. Base photo lab
4. 7 September 1984
5. Civil Engineering, Building 78
6. Rear oblique of building facing north-  
west
7. Photograph 9





1. Building 110, Type D  
Senior Officer's Quarters Historic  
District
2. Maxwell Air Force Base, AL
3. Base photo lab
4. 7 September 1984
5. Civil Engineering, Building 78
6. Front of building facing southeast
7. Photograph 10



1. Building 110, Type D  
Senior Officer's Quarters Historic  
District
2. Maxwell Air Force Base, AL
3. Base photo lab
4. 7 September 1984
5. Civil Engineering, Building 78
6. Rear oblique of building facing north-  
west
7. Photograph 11



1. Building 110, Type D  
Senior Officer's Quarters Historic  
District
2. Maxwell Air Force Base, AL
3. Base photo lab
4. 7 September 1984
5. Civil Engineering, Building 78
6. Rear oblique of building facing north-  
east
7. Photograph 12







1. Building 113, Type E  
Senior Officer's Quarters Historic  
District
2. Maxwell Air Force Base, AL
3. Base photo lab
4. 7 September 1984
5. Civil Engineering, Building 78
6. Front of building facing southeast
7. Photograph 13



1. Building 113, Type E  
Senior Officer's Quarters Historic  
District
2. Maxwell Air Force Base, AL
3. Base photo lab
4. 7 September 1984
5. Civil Engineering, Building 78
6. Rear oblique of building facing  
northwest
7. Photograph 14



1. Building 113, Type E  
Senior Officer's Quarters Historic  
District
2. Maxwell Air Force Base, AL
3. Base photo lab
4. 7 September 1984
5. Civil Engineering, Building 78
6. Rear oblique of building facing north
7. Photograph 15



1. Building 317, Type F  
Senior Officer's Quarters Historic  
District
2. Maxwell Air Force Base, AL
3. Base photo lab
4. 7 September 1984
5. Civil Engineering, Building 78
6. Front of building facing northeast
7. Photograph 16





1. Building 317, Type F  
Senior Officer's Quarters Historic  
District
2. Maxwell Air Force Base, AL
3. Base photo lab
4. 7 September 1984
5. Civil Engineering, Building 78
6. Rear oblique of building facing north-  
east
7. Photograph 17



1. Building 317, Type F  
Senior Officer's Quarters Historic  
District
2. Maxwell Air Force Base, AL
3. Base photo lab
4. 7 September 1984
5. Civil Engineering, Building 78
6. Rear oblique of building facing south-  
east
7. Photograph 18



1. Building 404, Type G  
Senior Officer's Quarters Historic  
District
2. Maxwell Air Force Base, AL
3. Base photo lab
4. 7 September 1984
5. Civil Engineering, Building 78
6. Front of building facing southeast
7. Photograph 19





1. Building 404, Type G  
Senior Officer's Quarters Historic  
District
2. Maxwell Air Force Base, AL
3. Base photo lab
4. 7 September 1984
5. Civil Engineering, Building 78
6. Rear oblique of building facing north-  
west
7. Photograph 20





1. Building 404, Type G  
Senior Officer's Quarters Historic  
District
2. Maxwell Air Force Base, AL
3. Base photo lab
4. 7 September 1984
5. Civil Engineering, Building 78
6. Rear oblique of building facing north-  
east
7. Photograph 21



1. Building 413, Type H  
Senior Officer's Quarters Historic  
District
2. Maxwell Air Force Base, AL
3. Base photo lab
4. 7 September 1984
5. Civil Engineering, Building 78
6. Front of building facing south
7. Photograph 22



1. Building 413, Type H  
Senior Officer's Quarters Historic  
District
2. Maxwell Air Force Base, AL
3. Base photo lab
4. 7 September 1984
5. Civil Engineering, Building 78
6. Rear oblique of building facing north-  
east
7. Photograph 23



1. Building 413, Type H  
Senior Officer's Quarters Historic  
District
2. Maxwell Air Force Base, AL
3. Base photo lab
4. 7 September 1984
5. Civil Engineering, Building 78
6. Rear oblique of building facing north-  
west
7. Photograph 24





1. Building 337, Curry House  
Senior Officer's Quarters Historic  
District
2. Maxwell Air Force Base, AL
3. Base photo lab
4. 7 September 1984
5. Civil Engineering, Building 78
6. Front oblique of building facing north  
west
7. Photograph 25



1. Building 337, Curry House  
Senior Officer's Quarters Historic  
District
2. Maxwell Air Force Base, AL
3. Base photo lab
4. 7 September 1984
5. Civil Engineering, Building 78
6. Front oblique of building facing  
northeast
7. Photograph 26



1. Building 337, Curry House  
Senior Officer's Quarters Historic  
District
2. Maxwell Air Force Base, AL
3. Base photo lab
4. 7 September 1984
5. Civil Engineering, Building 78
6. Rear oblique of building facing  
southeast
7. Photograph 27





1. Building 337, Curry House  
Senior Officer's Quarters Historic  
District
2. Maxwell Air Force Base, AL
3. Base photo lab
4. 7 September 1984
5. Civil Engineering, Building 78
6. Rear oblique of building facing  
southwest
7. Photograph 28





1. Senior Officer's Quarters Historic District
2. Maxwell Air Force Base, AL
3. Base photo lab
4. 7 September 1984
5. Civil Engineering, Building 78
6. Streetscape, East Dr facing northeast
7. Photograph 29, Location 1 on Figure 1



1. Senior Officer's Quarters Historic District
2. Maxwell Air Force Base, AL
3. Base photo lab
4. 7 September 1984
5. Civil Engineering, Building 78
6. Streetscape, East Dr facing northeast
7. Photograph 30, Location 2 on Figure 1



1. Senior Officer's Quarters Historic District
2. Maxwell Air Force Base, AL
3. Base photo lab
4. 7 September 1984
5. Civil Engineering, Building 78
6. Streetscape, East Dr facint east
7. Photograph 31, Location 3 on Figure 1





1. Senior Officer's Quarters Historic District
2. Maxwell Air Force Base, AL
3. Base photo lab
4. 7 September 1984
5. Civil Engineering, Building 78
6. Streetscape, East Dr facing east
7. Photograph 32, Location 4 on Figure 1





1. Senior Officer's Quarters Historic District
2. Maxwell Air Force Base, AL
3. Base photo lab
4. 7 September 1984
5. Civil Engineering, Building 78
6. Streetscape, East Dr facing east
7. Photograph 33, Location 5 on Figure 1



1. Senior Officer's Quarters Historic District
2. Maxwell Air Force Base, AL
3. Base photo lab
4. 7 September 1984
5. Civil Engineering, Building 78
6. Streetscape, East Dr facing east
7. Photograph 34, Location 6 on Figure 1



1. Senior Officer's Quarters Historic District
2. Maxwell Air Force Base, AL
3. Base photo lab
4. 7 September 1984
5. Civil Engineering, Building 78
6. Streetscape, East Dr facing northeast
7. Photograph 35, Location 7 on Figure 1





1. Senior Officer's Quarters Historic District
2. Maxwell Air Force Base, AL
3. Base photo lab
4. 7 September 1984
5. Civil Engineering, Building 78
6. Streetscape, East Dr facing north
7. Photograph 36, Location 8 on Figure 1





427  
COL. R. M. MELVIN

1. Senior Officer's Quarters Historic District
2. Maxwell Air Force Base, AL
3. Base photo lab
4. 7 September 1984
5. Civil Engineering, Building 78
6. Streetscape, East Dr facing northwest
7. Photograph 37, Location 9 on Figure 1



1. Senior Officer's Quarters Historic District
2. Maxwell Air Force Base, AL
3. Base photolab
4. 7 September 1984
5. Civil Engineering, Building 78
6. Streetscape, East Dr facing northwest
7. Photograph 38, Location 10 on Figure 1



1. Senior Officer's Quarters Historic District
2. Maxwell Air Force Base, AL
3. Base photo lab
4. 7 September 1984
5. Civil Engineering, Building 78
6. Streetscape, East Dr facing northeast
7. Photograph 39, Location 11 on Figure 1





1. Senior Officer's Quarters Historic District
2. Maxwell Air Force Base, AL
3. Base photo lab
4. 7 September 1984
5. Civil Engineering, Building 78
6. Streetscape, Center Dr facing north-east
7. Photograph 40, Location 12 on Figure 1



1. Senior Officer's Quarters Historic District
2. Maxwell Air Force Base, AL
3. Base photo lab
4. 7 September 1984
5. Civil Engineering, Building 78
6. Streetscape, Center Dr facing northeast
7. Photograph 41, Location 13 on Figure 1



1. Senior Officer's Quarters Historic District
2. Maxwell Air Force Base, AL
3. Base photo lab
4. 7 September 1984
5. Civil Engineering, Building 78
6. Streetscape, Center Dr facing north-east
7. Photograph 42, Location 14 on Figure 1



1. Senior Officer's Quarters Historic District
2. Maxwell Air Force Base, AL
3. Base photo lab
4. 7 September 1984
5. Civil Engineering, Building 78
6. Streetscape, Center Dr facing north
7. Photograph 43, Location 15 on Figure 1





1. Senior Officer's Quarters Historic District
2. Maxwell Air Force Base, AL
3. Base photo lab
4. 7 September 1984
5. Civil Engineering, Building 78
6. Streetscape, Center Dr facing north
7. Photograph 44, Location 16 on Figure 1



1. Senior Officer's Quarters Historic District
2. Maxwell Air Force Base, AL
3. Base photo lab
4. 7 September 1984
5. Civil Engineering, Building 78
6. Streetscape, Center Dr facing northwest
7. Photograph 45, Location 17 on Figure 1



1. Senior Officer's Quarters Historic District
2. Maxwell Air Force Base, AL
3. Base photo lab
4. 7 September 1984
5. Civil Engineering, Building 78
6. Streetscape, Sequoia Dr facing north-east
7. Photograph 46, Location 18 on Figure 1







1. Senior Officer's Quarters Historic District
2. Maxwell Air Force Base, AL
3. Base photo lab
4. 7 September 1984
5. Civil Engineering, Building 78
6. Streetscape, Sequoia Dr facing northwest
7. Photograph 47, Location 19 on Figure 1



1. Senior Officer's Quarters Historic District
2. Maxwell Air Force Base, AL
3. Base photo lab
4. 7 September 1984
5. Civil Engineering, Building 78
6. Streetscape, Sequoia Dr facing southwest
7. Photograph 48, Location 20 on Figure 1



1. Senior Officer's Quarters Historic District
2. Maxwell Air Force Base, AL
3. Base photo lab
4. 7 September 1984
5. Civil Engineering, Building 78
6. Streetscape, Sequoia Dr facing southwest
7. Photograph 49, Location 21 on Figure 1



1. Senior Officer's Quarters Historic District
2. Maxwell Air Force Base, AL
3. Base photo lab
4. 7 September 1984
5. Civil Engineering, Building 78
6. Streetscape, Inner Circle facing west
7. Photograph 50, Location 22 on Figure 1





1. Senior Officer's Quarters Historic District
2. Maxwell Air Force Base, AL
3. Base photo lab
4. 7 September 1984
5. Civil Engineering, Building 78
6. Streetscape, Inner Circle facing southeast
7. Photograph 51, Location 23 on Figure 1



1. Senior Officer's Quarters Historic District
2. Maxwell Air Force Base, AL
3. Base photo lab
4. 7 September 1984
5. Civil Engineering, Building 78
6. Streetscape, Inner Circle facing south
7. Photograph 52, Location 24 on Figure 1



1. Senior Officer's Quarters Historic District
2. Maxwell Air Force Base, AL
3. Base photo lab
4. 7 September 1984
5. Civil Engineering, Building 78
6. Streetscape, Inner Circle facing south
7. Photograph 53, Location 25 on Figure 1



1. Senior Officer's Quarters Historic District
2. Maxwell Air Force Base, AL
3. Base photo lab
4. 7 September 1984
5. Civil Engineering. Building 78.
6. Streetscape, Inner Circle facing southwest
7. Photograph 54, Location 26 on Figure 1





1. Senior Officer's Quarters Historic District
2. Maxwell Air Force Base, AL
3. Base photo lab
4. 7 September 1984
5. Civil Engineering, Building 78
6. Streetscape, Inner Circle facing south east
7. Photograph 55, Location 27 on Figure 1



1. Senior Officer's Quarters Historic District
2. Maxwell Air Force Base, AL
3. Base Photo lab
4. 7 September 1984
5. Civil Engineering, Building 78
6. Streetscape, Inner Circle facing southwest
7. Photograph 56, Location 28 on Figure 1



1. Senior Officer's Quarters Historic District
2. Maxwell Air Force Base, AL
3. Base photo lab
4. 7 September 1984
5. Civil Engineering, Building 78
6. Streetscape, Magnolia Blvd facing west
7. Photograph 57, Location 20 on Figure 1



1. Senior Officer's Quarters Historic  
District

2. Maxwell Air Force Base, AL

3. Base photo lab

4. 7 September 1984

5. Civil Engineering. Building 78

6. Streetscape, Magnolia Blvd facing west

7. Photograph 58, Location 30 on Figure 1





1. Senior Officer's Quarters Historic District
2. Maxwell Air Force Base, AL
3. Base photo lab
4. 7 September 1984
5. Civil Engineering, Building 78
6. Streetscape, Poplar St facing northwest
7. Photograph 59, Location 31 on Figure 1



1. Senior Officer's Quarters Historic District
2. Maxwell Air Force Base, AL
3. Base photo lab
4. 7 September 1984
5. Civil Engineering, Building 78
6. Streetscape, Inner Circle facing north east
7. Photograph 60, Location 32 on Figure 1



1. Senior Officer's Quarters Historic District
2. Maxwell Air Force Base, AL
3. Base photo lab
4. 7 September 1984
5. Civil Engineering, Building 78
6. Streetscape, Inner Circle facing north east
7. Photograph 61, Location 33 on Figure 1



1. Senior Officer's Quarters Historic District
2. Maxwell Air Force Base, AL
3. Base photo lab
4. 7 September 1984
5. Civil Engineering, Building 78
6. Streetscape, Inner Circle facing north east
7. Photograph 62, Location 34 on Figure 1





1. Senior Officer's Quarters Historic District
2. Maxwell Air Force Base, AL
3. Base photo lab
4. 7 September 1984
5. Civil Engineering, Building 78'
6. Streetscape, Inner Circle facing north east
7. Photograph 63, Location 35 on Figure 1



1. Senior Officer's Quarters Historic District
2. Maxwell Air Force Base, AL
3. Base photo lab
4. 7 September 1984
5. Civil Engineering, Building 78
6. Streetscape, Inner Circle facing north east
7. Photograph 64, Location 36 on Figure 1



1. Senior Officer's Quarters Historic District
2. Maxwell Air Force Base, AL
3. Base photo lab
4. 7 September 1984
5. Civil Engineering, Building 78
6. Streetscape, Inner Circle facing east
7. Photograph 66, Location 38 on Figure 1





1. Senior Officer's Quarters Historic District
2. Maxwell Air Force Base, AL
3. Base photo lab
4. 7 September 1984
5. Civil Engineering, Building 78
6. Streetscape, West Dr facing southwest
7. Photograph 67, Location 39 on Figure 1





1. Senior Officer's Quarters Historic District
2. Maxwell Air Force Base, AL
3. Base photo lab
4. 7 September 1984
5. Civil Engineering, Building 78
6. Streetscape, West Dr facing southwest
7. Photograph 68, Location 40 on Figure 1



1. Senior Officer's Quarters Historic District
2. Maxwell Air Force Base, AL
3. Base photo lab
4. 7 September 1984
5. Civil Engineering, Building 78
6. Streetscape, West Dr facing southwest
7. Photograph 69, Location 41 on Figure 1



1. Senior Officer's Quarters Historic District
2. Maxwell Air Force Base, AL
3. Base photo lab
4. 7 September 1984
5. Civil Engineering, Building 78
6. Streetscape, West Dr facing southwest
7. Photograph 70, Location 42 on Figure 1



1. Senior Officer's Quarters Historic District
2. Maxwell Air Force Base, AL
3. Base photo lab
4. 7 September 1984
5. Civil Engineering, Building 78'
6. Streetscape, Poplar St facing south
7. Photograph 71, Location 43 on Figure 1





1. Senior Officer's Quarters Historic District
2. Maxwell Air Force Base, AL
3. Base photo lab
4. 7 September 1984
5. Civil Engineering, Building 78
6. Streetscape, Poplar St facing southeast
7. Photograph 72, Location 44 on Figure 1



1. Senior Officer's Quarters Historic District
2. Maxwell Air Force Base, AL
3. Base photo lab
4. 7 September 1984
5. Civil Engineering, Building 78
6. Grill work example, front window, Building 209
7. Photograph 73



1. Senior Officer's Quarters Historic District
2. Maxwell Air Force Base, AL
3. Base photo lab
4. 7 September 1984
5. Civil Engineering, Building 78
6. Grill work example, side window, Building 209
7. Photograph 74



1. Senior Officer's Quarters Historic District
2. Maxwell Air Force Base, AL
3. Base photo lab
4. 7 September 1984
5. Civil Engineering, Building 78
6. Grill work example, side window, Bldg 208
7. Photograph 75





1. Senior Officer's Quarters Historic District
2. Maxwell Air Force Base, AL
3. Base photo lab
4. 7 September 1984
5. Civil Engineering, Building 78
6. Example of wrought iron interior stair railing, Building 209
7. Photograph 76



1. Senior Officer's Quarters Historic District
2. Maxwell Air Force Base, AL
3. Base photo lab
4. 7 September 1984
5. Civil Engineering, Building 78
6. Example of fireplace and mantle, Bldg 209
7. Photograph 77

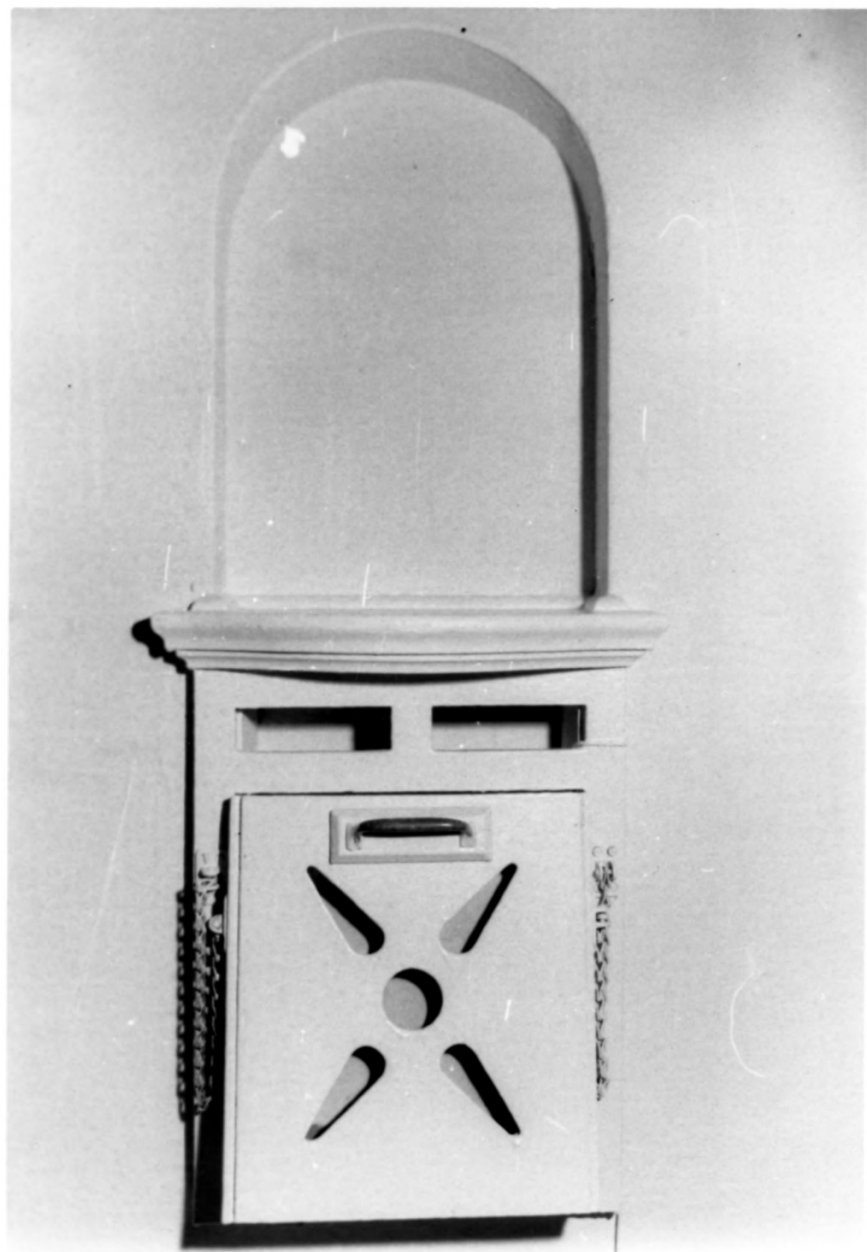


1. Senior Officer's Quarters Historic District
2. Maxwell Air Force Base, AL
3. Base photo lab
4. 7 September 1984
5. Civil Engineering, Building 78
6. Example of French doors, Building 209
7. Photograph 78



1. Senior Officer's Quarters Historic District
2. Maxwell Air Force Base, AL
3. Base photo lab
4. 7 September 1984
5. Civil Engineering, Building 78
6. Example of interior door and trim,  
Bldg 209
7. Photograph 79

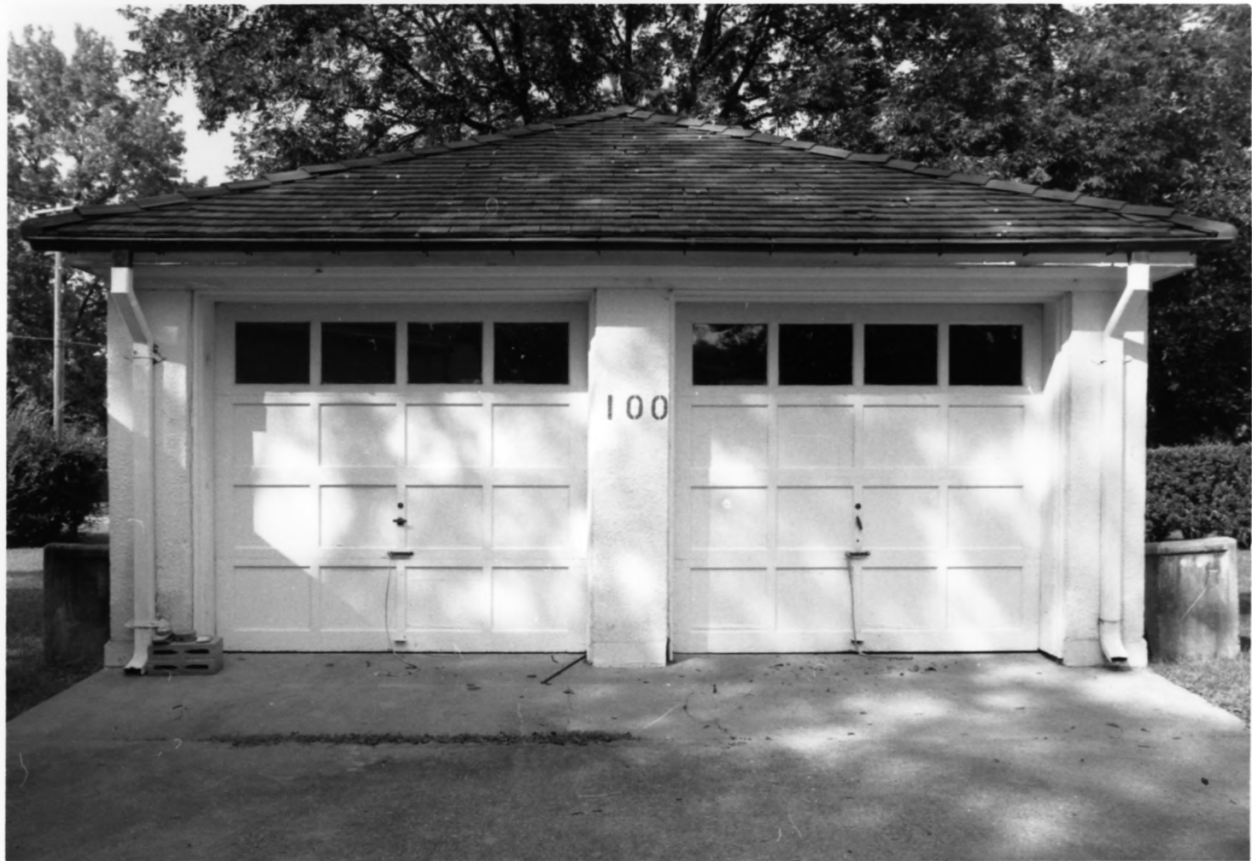




1. Senior Officer's Quarters Historic District
2. Maxwell Air Force Base, AL
3. Base photo lab
4. 7 September 1984
5. Civil Engineering, Building 78
6. Example of telephone alcove and directory box, Building 209
7. Photograph 80



1. Senior Officer's Quarters Historic District
2. Maxwell Air Force Base, AL
3. Base photo lab
4. 7 September 1984
5. Civil Engineering, Building 78
6. Example of shed porch addition, Bldg 334
7. Photograph 81



1. Senior Officer's Quarters Historic District
2. Maxwell Air Force Base, AL
3. Base photo lab
4. 7 September 1984
5. Civil Engineering, Building 78
6. Example of double garage, Building 100
7. Photograph 82



1. Senior Officer's Quarters Historic District
2. Maxwell Air Force Base, AL
3. Base photo lab
4. 7 September 1984
5. Civil Engineering, Building 78
6. Example of single garage, Building 335
7. Photograph 83