



11 8 '96

BATON ROUGE NATIONAL CEMETERY
EAST BATON ROUGE PARISH, LOUISIANA
PHOTO 1 OF 23



11 8 '96

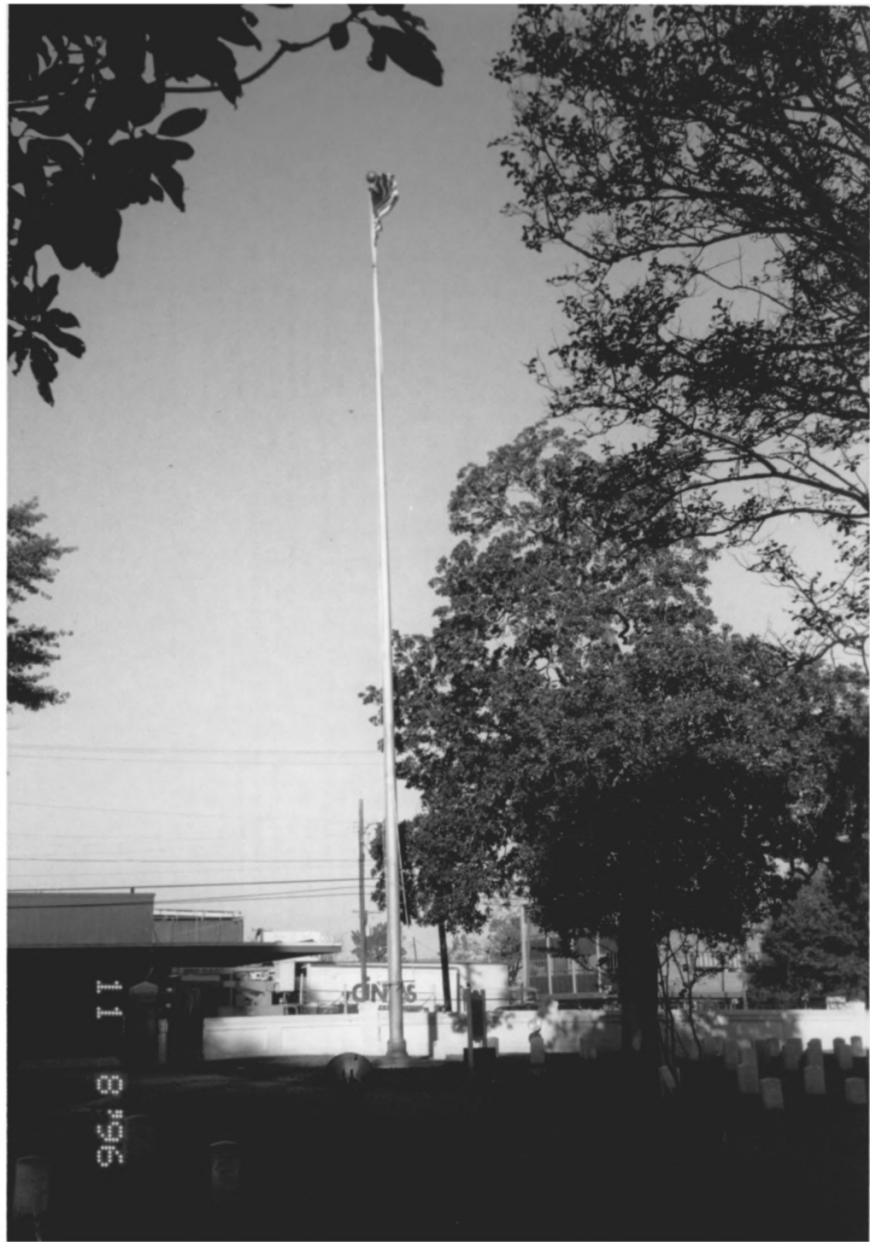
BATON ROUGE NATIONAL CEMETERY
EAST BATON ROUGE PARISH, LOUISIANA

PHOTO 2 OF 23



11 - 8 '96

BATON ROUGE NATIONAL CEMETERY
EAST BATON ROUGE PARISH, LOUISIANA
PHOTO 3 OF 23



11 8 196

BATON ROUGE NATIONAL CEMETERY

EAST BATON ROUGE, LOUISIANA

PHOTO 9 OF 23



BATON ROUGE NATIONAL CEMETERY
EAST BATON ROUGE PARISH, LOUISIANA
PHOTO 5 OF 23



11 8 '96

BATON ROUGE NATIONAL CEMETERY
EAST BATON ROUGE PARISH, LOUISIANA
PHOTO 6 OF 23



BATON ROUGE NATIONAL CEMETERY
EAST BATON ROUGE PARISH, LOUISIANA
PHOTO 7 OF 23

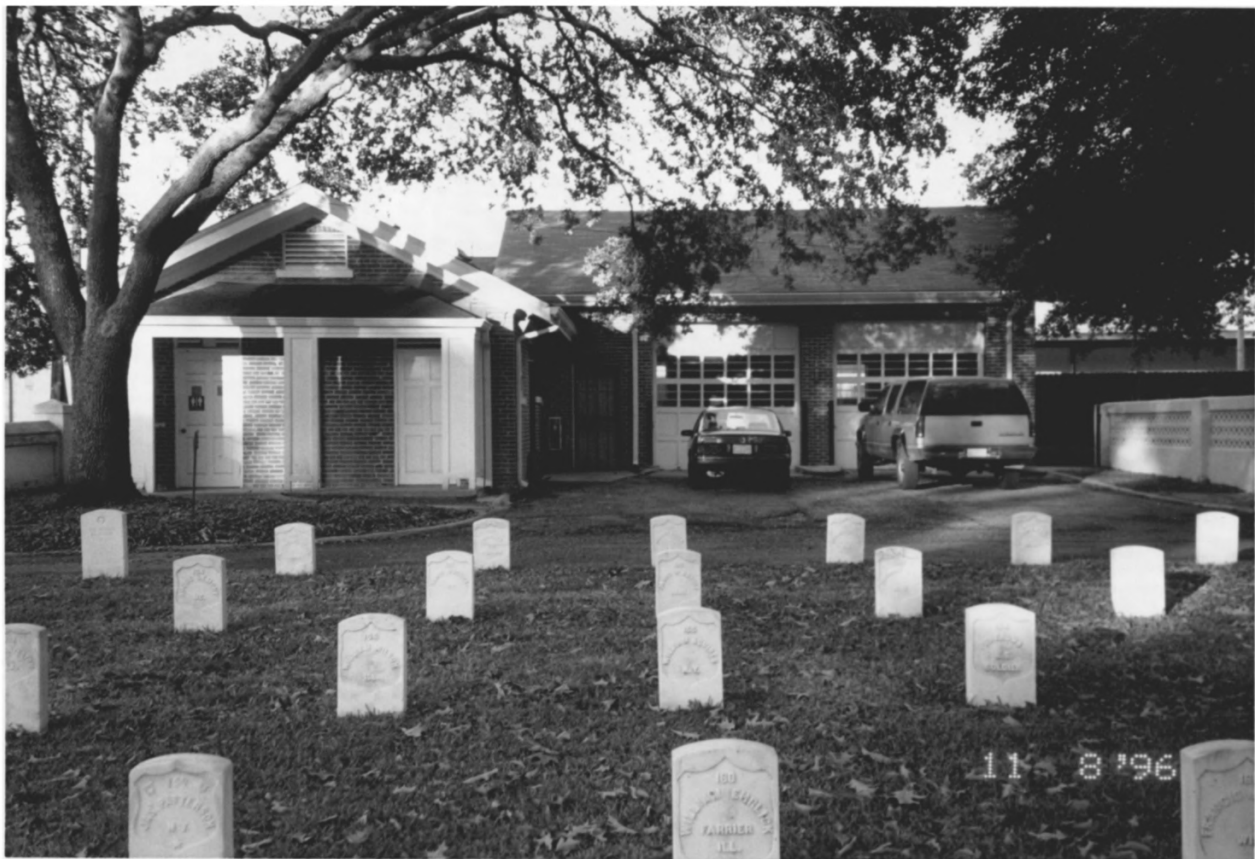


BATON ROUGE NATIONAL CEMETERY
EAST BATON ROUGE PARISH, LOUISIANA
PHOTO 8 OF 23



11 8 '96

BATON ROUGE NATIONAL CEMETERY
EAST BATON ROUGE PARISH, LOUISIANA
PHOTO 9 OF 23



11 8 '96

BATON ROUGE NATIONAL CEMETERY

EAST BATON ROUGE, LOUISIANA

PHOTO 10 OF 23



11 8 '96

BATON ROUGE NATIONAL CEMETERY
EAST BATON ROUGE PARISH, LOUISIANA
PHOTO 11 OF 23



11 8 '96

BATON ROUGE NATIONAL CEMETERY
EAST BATON ROUGE PARISH, LOUISIANA
PHOTO 12 OF 23



BATON ROUGE NATIONAL CEMETERY
EAST BATON ROUGE PARISH, LOUISIANA
PHOTO 13 OF 23



11 8 '96

BATON ROUGE NATIONAL CEMETERY
EAST BATON ROUGE PARISH, LOUISIANA
PHOTO 19 OF 23



11 8196

BATON ROUGE NATIONAL CEMETERY
EAST BATON ROUGE PARISH, LOUISIANA

PHOTO 15 OF 23

To the
Memory of
GENL PHILEMON THOMAS,
who was born in
Warren County, Va.
Feb 9, 1763,
and died
in Baton Rouge, La.
Nov 15, 1814.

This tablet is erected by
his children.

When a soldier, he met at Lancaster
in the year one thousand eight hundred
thirteen, and a number of his associates
in the town of Lancaster in 1806.
He attended the courts which impounded the
ground of the late George Washington the
second, and he had been in the army of the
United States in the battles of Brandywine,
Red Bank, Germantown, and the Clouds of the
Delaware. He was in the army of the
United States in the battles of Brandywine,
Red Bank, Germantown, and the Clouds of the
Delaware. He was in the army of the
United States in the battles of Brandywine,
Red Bank, Germantown, and the Clouds of the
Delaware.



11 8 '96

BATON ROUGE NATIONAL CEMETERY
EAST BATON ROUGE PARISH, LOUISIANA
PHOTO 16 OF 23



BENJAMIN D
GIBBENS

LOUISIANA

CAPTAIN INFANTRY
WORLD WAR II
DECEASED 1967
BURIED 1968

FLORENCE

JUL 10 1906

JAN 17 1982

WIFE OF

CAPT

B D GIBBENS

USA

11

8 '96

BATON ROUGE NATIONAL CEMETERY
EAST BATON ROUGE PARISH, LOUISIANA
PHOTO 17 OF 23



NATIONAL
CEMETERY

Federal soldiers killed in
the Battle of Baton Rouge,
August 5, 1862,
were buried on this site
which became a
National Cemetery in 1867.
Among soldiers buried here
is General Philemon Thomas,
remembered for his
attack on the Spanish fort
at Baton Rouge in 1810,
which established the
West Florida Republic.

BATON ROUGE NATIONAL CEMETERY
EAST BATON ROUGE PARISH, LOUISIANA
PHOTO 18 OF 23



11 8 '96

BATON ROUGE NATIONAL CEMETERY
EAST BATON ROUGE PARISH, LOUISIANA
PHOTO 19 OF 23



11 8 '96

BATON ROUGE NATIONAL CEMETERY
EAST BATON ROUGE PARISH, LOUISIANA
PHOTO 20 OF 23



11 8 '96

BATON ROUGE NATIONAL CEMETERY
EAST BATON ROUGE PARISH, LOUISIANA
PHOTO 21 OF 23



11 8 '96

BATON ROUGE NATIONAL CEMETERY
EAST BATON ROUGE, LOUISIANA
PHOTO 22 OF 23



11 8 '96

BATON ROUGE NATIONAL CEMETERY
EAST BATON ROUGE PARISH, LOUISIANA
PHOTOS 23 OF 23