


ALACHUA AVENUE, GAINESVILLE, FLA.

1. Southeast Gainesville Residential District
2. E. University Ave., Gainesville (Alachua County), FL
3. Susan Tate
4. 1986 Copy of Historic Photo
5. Gainesville Historic Preservation Office
6. Looking Southeast
7. Photo No. of



938 Gainesville, Fla.
Alachua Ave. East.

1. Southeast Gainesville Residential District
2. E. University Ave., Gainesville (Alachua County), FL
3. Susan Tate
4. 1986 Copy of 1908 Photo
5. Gainesville Historic Preservation Office
6. Looking Southeast
7. Photo No. of



Alachua Avenue. Gainesville, Fla.

This is quite a pretty little
town. some good
canning girls. 900
Jan 8-07

1. Southeast Gainesville Residential District
2. 600 Block of E. University Ave., Gainesville
(Alachua County), FL
3. Susan Tate
4. 1986 Copy of 1907 Photo
5. Gainesville Historic Preservation Office
6. Looking Southeast
7. Photo No. of 41



1. Southeast Gainesville Residential District
2. American Legion Post, 513 E. University Ave.,
Gainesville (Alachua County), FL
3. Susan Tate
4. 1986
5. Gainesville Historic Preservation Office
6. North Facade
7. Photo No. of



1. Southeast Gainesville Residential District
2. E. University Ave., Gainesville (Alachua County), FL
3. Susan Tate
4. 1986
5. Gainesville Historic Preservation Office
6. Looking Southeast
7. Photo No. of 1



1. Southeast Gainesville Residential District
2. B.R. Colson House, 607 E. University Ave.,
3. Susan Tate
4. 1986
5. Gainesville Historic Preservation Office
6. North Facade
7. Photo No. of



1. Southeast Gainesville Residential District
2. McKenzie House, 617 E. University Ave.,
Gainesville (Alachua County), FL
3. Susan Tate
4. 1986
5. Gainesville Historic Preservation Office
6. North Facade
7. Photo No. of



- 1. Southeast Gainesville Residential District**
- 2. McKenzie House, 617 E. University Ave.,
Gainesville (Alachua County), FL**
- 3. Susan Tate**
- 4. 1986 Copy of Historic Photo**
- 5. Gainesville Historic Preservation Office**
- 6. North Facade**
- 7. Photo No. of**



1. Southeast Gainesville Residential District
2. J.H. Colson House, 625 E. University Ave.,
Gainesville (Alachua County), FL
3. Susan Tate
4. 1986
5. Gainesville Historic Preservation Office
6. North Facade
7. Photo No. of



1. Southeast Gainesville Residential District
2. 700 Block of E. University Ave., Gainesville
(Alachua County), FL
3. Susan Tate
4. 1986
5. Gainesville Historic Preservation Office
6. North Facades
7. Photo No. of



1. Southeast Gainesville Residential District
2. Cushman House, 735 E. University Ave.,
Gainesville (Alachua County), FL
3. Susan Tate
4. 1986
5. Gainesville Historic Preservation Office
6. North Facade
7. Photo No. of .



1. Southeast Gainesville Residential District
2. Fowler House, 805 E. University Ave.,
Gainesville (Alachua County), FL
3. Susan Tate
4. 1986
5. Gainesville Historic Preservation Office
6. North Facade
7. Photo No. of



1. Southeast Gainesville Residential District
2. McCreary House, 815 E. University Ave.,
Gainesville (Alachua County), FL
3. Susan Tate
4. 1986
5. Gainesville Historic Preservation Office
6. North Facade
7. Photo No. of 11



- 1. Southeast Gainesville Residential District**
- 2. 835 East University Ave., Gainesville
(Alachua County), FL**
- 3. Susan Tate**
- 4. 1986**
- 5. Gainesville Historic Preservation Office**
- 6. North Facade**
- 7. Photo No. of**



1. Southeast Gainesville Residential District
2. Medlin House, 15 S.E. 7th St., Gainesville
(Alachua County), FL
3. Susan Tate
4. 1986
5. Gainesville Historic Preservation Office
6. West Facade
7. Photo No. / of 4/



1. Southeast Gainesville Residential District
2. W.P. Carter House, 21 S.E. 7th St.,
Gainesville (Alachua County), FL
3. Susan Tate
4. 1986
5. Gainesville Historic Preservation Office
6. West Facade
7. Photo No. 16 of 41



VICTORIA
APARTMENTS
POUND HOUSE
188 D.E. 774 82

1. Southeast Gainesville Residential District
2. Pound House, 108 S.E. 7th St., Gainesville
(Alachua County), FL
3. Susan Tate
4. 1986
5. Gainesville Historic Preservation Office
6. East Facade
7. Photo No. of.



1. Southeast Gainesville Residential District
2. Colson-Hayman House, 105 S.E. 7th St.,
Gainesville (Alachua County), FL
3. Susan Tate
4. 1986
5. Gainesville Historic Preservation Office
6. West Facade
7. Photo No. of 41



1. Southeast Gainesville Residential District
2. Broughton-Niblack House, 115 S.E. 7th St.,
Gainesville (Alachua County), FL
3. Susan Tate
4. 1986
5. Gainesville Historic Preservation Office
6. West Facade
7. Photo No. of



- 1. Southeast Gainesville Residential District**
- 2. Baird House, 309 S.E. 7th St., Gainesville
(Alachua County), FL**
- 3. Susan Tate**
- 4. 1986**
- 5. Gainesville Historic Preservation Office**
- 6. West Facade**
- 7. Photo No. of**



1. Southeast Gainesville Residential District
2. S.E. 2nd Ave. & 7th St., Gainesville
(Alachua County), FL
3. Susan Tate
4. 1986
5. Gainesville Historic Preservation Office
6. Looking East
7. Photo No. 21 of 41



1. Southeast Gainesville Residential District
2. Hodges House, 717 S.E. 2nd Ave., Gainesville
(Alachua County), FL
3. Susan Tate
4. 1986
5. Gainesville Historic Preservation Office
6. North Facade
7. Photo No. 22 of 41



1. Southeast Gainesville Residential District
2. T.J. Swearingen-House, 205 S.E. 7th St.,
Gainesville (Alachua County), FL
3. Susan Tate
4. 1986
5. Gainesville Historic Preservation Office
6. West Facade
7. Photo No. 23 of 41



1. Southeast Gainesville Residential District
2. Shands-Enwall House, 202 S.E. 7th St.,
Gainesville (Alachua County), FL
3. Susan Tate
4. 1986
5. Gainesville Historic Preservation Office
6. East Facade
7. Photo No. 24 of 41



National Odd Fellows' Sanitarium, Gainesville, Florida

1. Southeast Gainesville Residential District
2. Oddfellows Lodge (demolished), 700 Block S.E.
2nd Ave., Gainesville (Alachua County), FL
3. Susan Tate
4. 1986 Copy of Historic Photo
5. Gainesville Historic Preservation Office
6. Facade
7. Photo No. 35 of 41



1. Southeast Gainesville Residential District
2. 418-408 S.E. 7th St., Gainesville
(Alachua County), FL
3. Susan Tate
4. 1986
5. Gainesville Historic Preservation Office
6. East Facades
7. Photo No. *26* of *41*



1. Southeast Gainesville Residential District
2. 407 & 401 S.E. 6th Terrace, Gainesville
(Alachua County), FL
3. Susan Tate
4. 1986
5. Gainesville Historic Preservation Office
6. West Facades
7. Photo No. 27 of 41



NO
OUTLET

1. Southeast Gainesville Residential District
2. 532 S.E. 2nd Pl., Gainesville (Alachua County), FL
3. Susan Tate
4. 1986
5. Gainesville Historic Preservation Office
6. South Facade & East Elevation
7. Photo No. ~~28~~ of 1:



1. Southeast Gainesville Residential District
2. Matheson House, 528 S.E. 1st Ave., Gainesville
(Alachua County), FL
3. Susan Tate
4. 1986
5. Gainesville Historic Preservation Office
6. South Facade
7. Photo No. 29 of 41



1. Southeast Gainesville Residential District
2. S.E. 1st Ave., Gainesville (Alachua County),
FL
3. Susan Tate
4. 1986
5. Gainesville Historic Preservation Office
6. Looking East Toward 105 S.E. 7th St.
7. Photo No. 30 of 41



1. Southeast Gainesville Residential District
2. 609 S.E. 1st Ave., Gainesville (Alachua County), FL
3. Susan Tate
4. 1986
5. Gainesville Historic Preservation Office
6. North Facade
7. Photo No. 31 of 41



617

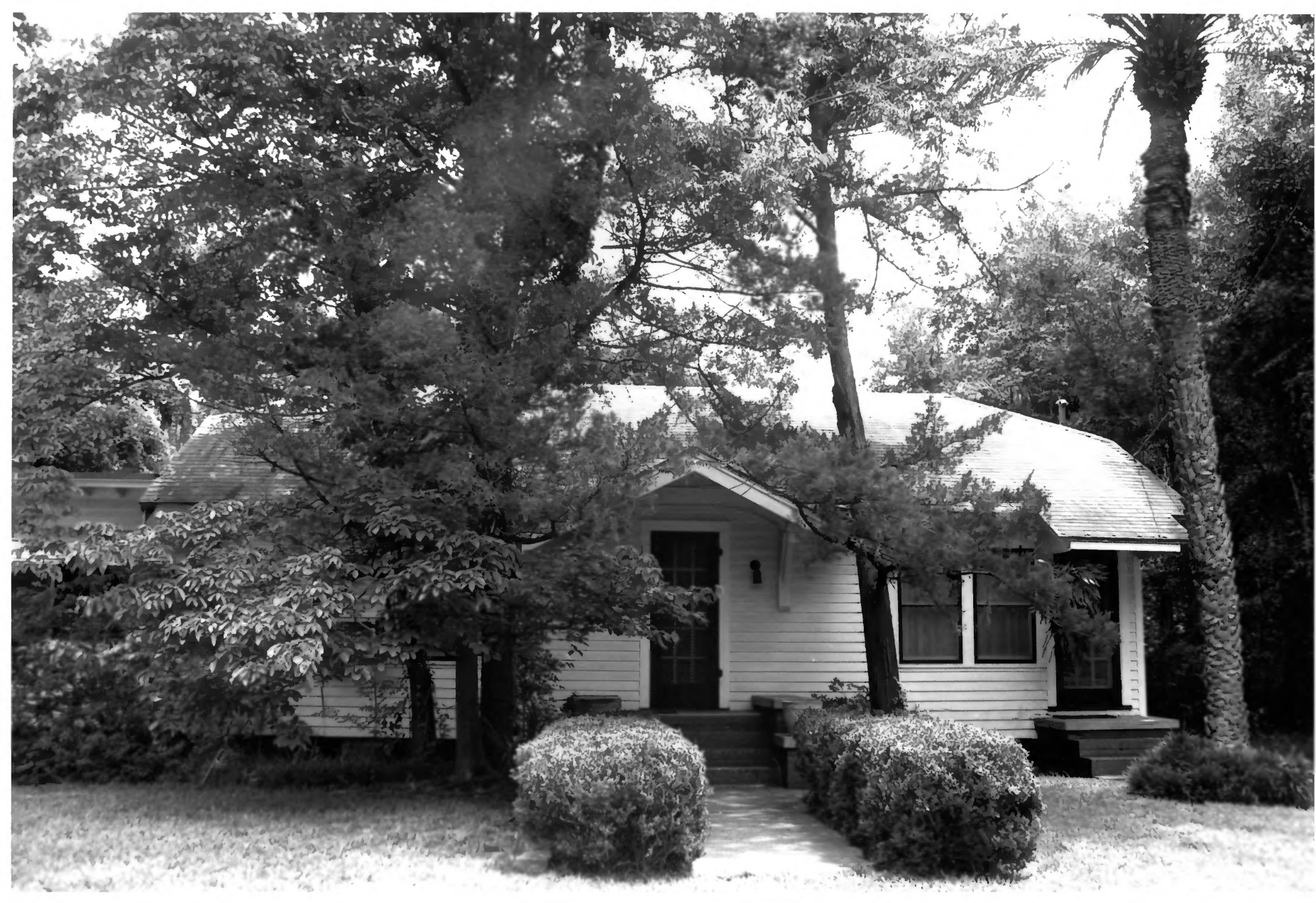
617

617

1. Southeast Gainesville Residential District
2. 617 S.E. 1st Ave., Gainesville (Alachua County), FL
3. Susan Tate
4. 1986
5. Gainesville Historic Preservation Office
6. North Facade
7. Photo No. 32 of 41



1. Southeast Gainesville Residential District
2. 623 & 627 S.E. 1st Ave., Gainesville
(Alachua County), FL
3. Susan Tate
4. 1986
5. Gainesville Historic Preservation Office
6. North Facades
7. Photo No. 33 of 41



1. Southeast Gainesville Residential District
2. 15 S.E. 8th St., Gainesville (Alachua County), FL
3. Susan Tate
4. 1986
5. Gainesville Historic Preservation Office
6. West Facade
7. Photo No. 34 of 41



605 SE 7th

1. Southeast Gainesville Residential District
2. 605 S.E. 2nd Pl., Gainesville (Alachua County), FL
3. Susan Tate
4. 1986
5. Gainesville Historic Preservation Office
6. North Elevation & West Facade
7. Photo No. 35 of 41



1. Southeast Gainesville Residential District
2. Sweetwater Branch, Gainesville (Alachua County), FL
3. Susan Tate
4. 1986
5. Gainesville Historic Preservation Office
6. Looking North
7. Photo No. 36 of 41



SE 1ST AVE

4th ST

Marlboro
CIGARETTES

1. Southeast Gainesville Residential District
2. S.E. 1st Ave. & 9th St., Gainesville
(Alachua County), FL
3. Susan Tate
4. 1986
5. Gainesville Historic Preservation Office
6. Looking Southeast
7. Photo No. 37 of 41



- 1. Southeast Gainesville Residential District**
- 2. S.E. 1st Ave. & 8th St., Gainesville
(Alachua County), FL**
- 3. Susan Tate**
- 4. 1986**
- 5. Gainesville Historic Preservation Office**
- 6. Looking Southwest**
- 7. Photo No. . . . of . . .**



1. Southeast Gainesville Residential District
2. S.E. 5th Ave., Gainesville (Alachua County),
Florida
3. Susan Tate
4. 1986
5. Gainesville Historic Preservation Office
6. Looking Southeast from 6th St.
7. Photo No. 39 of 41



1. Southeast Gainesville Residential District
2. S.E. 5th Ave., Gainesville (Alachua County),
Florida
3. Susan Tate
4. 1986
5. Gainesville Historic Preservation Office
6. Looking South
7. Photo No. 40 of 41



1. Southeast Gainesville Residential District
2. S.E. 6th Terrace & 5th Ave., Gainesville
(Alachua County), FL
3. Susan Tate
4. 1986
5. Gainesville Historic Preservation Office
6. Looking West
7. Photo No. 11 of 11