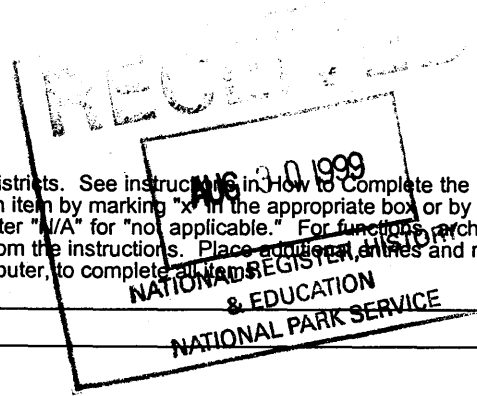


United States Department of the Interior  
National Park Service

NATIONAL REGISTER OF HISTORIC PLACES  
REGISTRATION FORM

This form is for use in nominating or requesting determinations for individual properties and districts. See instructions in How to Complete the National Register of Historic Places Registration Form (National Register Bulletin 16A). Complete each item by marking "x" in the appropriate box or by entering the information requested. If any item does not apply to the property being documented, enter "N/A" for "not applicable." For functions, architectural classification, materials, and areas of significance, enter only categories and subcategories from the instructions. Place additional entries and narrative items on continuation sheets (NPS Form 10-900a). Use a typewriter, word processor, or computer, to complete all items.

1204



1. Name of Property

historic name BOSTWICK SCHOOL

other names/site number Old Bostwick School

2. Location

street & number 125 Tillman Street N/A  not for publication

city or town Bostwick N/A  vicinity

state FLORIDA code FL county Putnam code 107 zip code 32007

3. State/Federal Agency Certification

As the designated authority under the National Historic Preservation Act, as amended, I hereby certify that this  nomination  request for determination of eligibility meets the documentation standards for registering properties in the National Register of Historic Places and meets the procedural and professional requirements set forth in 36 CFR Part 60. In my opinion, the property  meets  does not meet the National Register criteria. I recommend that this property be considered significant  nationally  statewide  locally. ( See continuation sheet for additional comments.)

[Signature] 8/20/99  
Signature of certifying official/Title Date

Florida State Historic Preservation Officer, Division of Historical Resources  
State or Federal agency and bureau

In my opinion, the property  meets  does not meet the National Register criteria. ( See continuation sheet for additional comments.)

\_\_\_\_\_  
Signature of certifying official/Title Date

\_\_\_\_\_  
State or Federal agency and bureau

4. National Park Service Certification

I hereby certify that the property is:

- entered in the National Register  See continuation sheet
- determined eligible for the National Register  See continuation sheet.
- determined not eligible for the National Register  See continuation sheet.
- removed from the National Register.
- other, (explain) \_\_\_\_\_

[Signature]  
Signature of the Keeper

\_\_\_\_\_  
Date of Action 9/29/99

Bostwick School  
Name of Property

Putnam Co., FL  
County and State

**5. Classification**

**Ownership of Property**

(Check as many boxes as apply)

- private
- public-local
- public-State
- public-Federal

**Category of Property**

(Check only one box)

- buildings
- district
- site
- structure
- object

**Number of Resources within Property**

(Do not include any previously listed resources in the count)

Contributing	Noncontributing	
1	2	buildings
0	0	sites
0	0	structures
0	0	objects
1	2	total

**Name of related multiple property listings**

(Enter "N/A" if property is not part of a multiple property listing.)

\_\_\_\_\_ "N/A" \_\_\_\_\_

**Number of contributing resources previously listed in the National Register**

\_\_\_\_\_ 0 \_\_\_\_\_

**6. Function or Use**

**Historic Functions**

(Enter categories from instructions)

EDUCATION: school  
\_\_\_\_\_  
\_\_\_\_\_  
\_\_\_\_\_  
\_\_\_\_\_  
\_\_\_\_\_  
\_\_\_\_\_

**Current Functions**

(Enter categories from instructions)

VACANT/NOT IN USE  
\_\_\_\_\_  
\_\_\_\_\_  
\_\_\_\_\_  
\_\_\_\_\_  
\_\_\_\_\_

**7. Description**

**Architectural Classification**

(Enter categories from instructions)

OTHER: frame vernacular  
\_\_\_\_\_  
\_\_\_\_\_

**Materials**

(Enter categories from instructions)

foundation BRICK  
walls WOOD  
roof ASPHALT  
other \_\_\_\_\_  
\_\_\_\_\_

**Narrative Description**

(Describe the historic and current condition of the property on one or more continuation sheets.)

**8. Statement of Significance**

**Applicable National Register Criteria**

(Mark "x" in one or more boxes for the criteria qualifying the property for National Register listing.)

- A** Property is associated with events that have made a significant contribution to the broad patterns of our history.
- B** Property is associated with the lives of persons significant in our past.
- C** Property embodies the distinctive characteristics of a type, period, or method of construction or represents the work of a master, or possesses high artistic values, or represents a significant and distinguishable entity whose components lack individual distinction.
- D** Property has yielded, or is likely to yield information important in prehistory or history.

**Criteria Considerations**

(Mark "x" in all the boxes that apply.)

Property is:

- A** owned by a religious institution or used for religious purposes.
- B** removed from its original location.
- C** a birthplace or grave.
- D** a cemetery.
- E** a reconstructed building, object, or structure.
- F** a commemorative property.
- G** less than 50 years of age or achieved significance within the past 50 years

**Narrative Statement of Significance**

(Explain the significance of the property on one or more continuation sheets.)

**9. Major Bibliographical References**

**Bibliography**

Cite the books, articles, and other sources used in preparing this form on one or more continuation sheets.)

**Previous documentation on file (NPS):**

- preliminary determination of individual listing (36 CFR 36) has been requested
- previously listed in the National Register
- previously determined eligible by the National Register
- designated a National Historic Landmark
- recorded by Historic American Buildings Survey  
# \_\_\_\_\_
- recorded by Historic American Engineering Record

**Areas of Significance**

(Enter categories from instructions)

EDUCATION

SOCIAL HISTORY

**Period of Significance**

1921-1949

**Significant Dates**

1921

**Significant Person**

N/A

**Cultural Affiliation**

N/A

**Architect/Builder**

Johnson, L.L., builder-designer

**Primary location of additional data:**

- State Historic Preservation Office
- Other State Agency
- Federal agency
- Local government
- University
- Other

Name of Repository

# \_\_\_\_\_

Bostwick School  
Name of Property

Putnam Co., FL  
County and State

## 10. Geographical Data

Acreege of Property 5.36 acres

### UTM References

(Place additional references on a continuation sheet.)

1	1	7	4	3	8	7	2	0	3	2	9	3	4	0	0
	Zone		Easting						Northing						
2															

3															
	Zone		Easting						Northing						
4															

See continuation sheet

### Verbal Boundary Description

(Describe the boundaries of the property on a continuation sheet.)

### Boundary Justification

(Explain why the boundaries were selected on a continuation sheet.)

## 11. Form Prepared By

name/title Jane Nedbalek, Claudia Wilkinson, Robert O. Jones, Historic Sites Specialist

organization Bureau of Historic Preservation date August 1999

street & number R.A. Gray Building, 500 S. Bronough Street telephone (850) 487-2333

city or town Tallahassee state Florida zip code 32399-0250

### Additional Documentation

Submit the following items with the completed form:

#### Continuation Sheets

#### Maps

A **USGS map** (7.5 or 15 minute series) indicating the property's location.

A **Sketch map** for historic districts and properties having large acreage or numerous resources.

#### Photographs

Representative **black and white photographs** of the property.

#### Additional items

(check with the SHPO or FPO for any additional items)

### Property Owner

(Complete this item at the request of SHPO or FPO.)

name Board of County Commissioners

street & number St. Johns Ave., Bldg. 1C telephone 904-329-0205

city or town Palatka state FL zip code 32177

**Paperwork Reduction Act Statement:** This information is being collected for applications to the National Register of Historic Places to nominate properties for listing or determine eligibility for listing, to list properties, and amend listings. Response to this request is required to obtain a benefit in accordance with the National Historic Preservation Act, as amended (16 U.S.C. 470 *et seq.*).

**Estimated Burden Statement:** Public reporting burden for this form is estimated to average 18.1 hours per response including time for reviewing instructions, gathering and maintaining data, and completing and reviewing the form. Direct comments regarding this burden estimate or any aspect of this form to the Chief, Administrative Services Division, National Park Service, P.O. Box 37127, Washington, DC 20013-7127; and the Office of Management and Budget, Paperwork Reductions Projects (1024-0018), Washington, DC 20503.

United States Department of the Interior  
National Park Service

**NATIONAL REGISTER OF HISTORIC PLACES  
CONTINUATION SHEET**

Section number 7 Page 1

**BOSTWICK SCHOOL, BOSTWICK, PUTNAM  
COUNTY, FLORIDA**

---

**SUMMARY**

Bostwick School, built in 1921, is located at 125 Tillman Street, in Bostwick, Putnam County, Florida. The rectangular, two-story, frame vernacular building is constructed on a brick pier foundation. The building has exterior drop siding, a hip roof, and 6/6, double-hung wooden sash windows. The building served also as a community center. Two additional school buildings joined by a covered walkway were constructed on the property in 1957.

**SETTING**

Bostwick is located to the west of the St. Johns River, 8 miles north of Palatka on Highway 17. The school is located on the eastern edge of the small, residential community which has a population of 300. Tillman Street borders the property on the north. Cedar Drive bordering the west boundary is unused and overgrown. A historic Baptist church, and its contemporary assembly building are located northeast of the historic school property. The school property is a level lawn with scattered mature trees on the lot and periphery. Two one-story concrete block school buildings are to the west of the historic building within the school boundary.

**PHYSICAL DESCRIPTION**

The Bostwick School is a rectangular, two story, frame vernacular building, with a hipped roof covered with asphalt shingles and pierced by an internal chimney on the west slope. Windows have 6/6 double-hung, wooden sashes, regularly arranged.

The north, main facade fronts onto Tillman Street (Photo #1). There is a central, one story porch with a gable roof supported by brackets (Photo #2). The recessed front doors are accessed by four concrete steps. The entrance is flanked by two single windows at the first story, and at the second story five single windows are aligned above the first story door and windows. The double wooden doors have five panels. The roof has broad eaves with exposed rafters.

The east elevation has four windows in each story (Photo #3). The west elevation mirrors the east elevation except that a brick chimney pierces the roof slope (Photo #4).

The south elevation is the rear of the school building (Photo #5). There is a central porch with recessed double doors like the one on the north facade, except that the gable roof is missing. The window arrangement is the same with two windows flanking the entry on both stories. Above the porch, is a five panel wooden door, instead of a window as on the north facade.

The interior of the school has wooden floors, and the walls and ceiling have tongue and groove horizontal wooden covering. Original doors, trim and chalk boards are present. An enclosed stairway is located

**United States Department of the Interior  
National Park Service**

**NATIONAL REGISTER OF HISTORIC PLACES  
CONTINUATION SHEET**

Section number 7 Page 2 **BOSTWICK SCHOOL, BOSTWICK, PUTNAM  
COUNTY, FLORIDA**

---

in the center of the main hall which continues on the east side of the hall (Photo #6). An open coat closet is under the stairway. A sink and drinking fountain are in the hall near the south door. The first floor contains two classrooms on the east and west halves of the building (Photos #7&8). Non-historic acoustic tiles are attached to the original classroom ceilings. Vinyl tiles are on the classroom floors. A boxed column is a chimney with an opening for a stove pipe. The wood stove is gone. The stairway accesses the second floor which is a great room/auditorium with an elevated platform/stage along the north wall (Photos #9&10). The second floor has a wooden ceiling and floor. A small ceiling trap door gives access to the attic. Two large square wooden columns are aligned east/west at the middle of the room. At either end of the stage are two small rooms. Originally both were probably used as dressing rooms, but one now is a kitchen. A boxed column in the west side is the chimney from the class room beneath.

**ALTERATIONS**

In 1940 a small kitchen was installed in one of the second floor dressing rooms. A stove and chimney on the east side of the building was removed. About 1957, the center walls were removed to make two instead of four classrooms. Ceiling tiles were added to the classrooms. At a later date an exterior wooden stairs from the door on the second floor was removed along with a separate restroom building south of the school (Photo #11).

**NON-CONTRIBUTING RESOURCES**

In 1957, two one-story concrete block school buildings were constructed west of the historic school, and closer to Tillman Street (Photo #12). The buildings consisted of offices, class rooms and bathrooms, connected by a roof and walkway to a cafeteria and kitchen. After their construction, the historic school building continued to function as a school library, and to provide supplemental school services.

**United States Department of the Interior  
National Park Service**

**NATIONAL REGISTER OF HISTORIC PLACES  
CONTINUATION SHEET**

Section number 8 Page 1 **BOSTWICK SCHOOL, BOSTWICK, PUTNAM  
COUNTY, FLORIDA**

---

**SUMMARY**

The Bostwick School is nominated to the National Register on the local level under Criterion A in the areas of Education and Social History. The Bostwick School was the community's third school at that location, and is an excellent example of a large, rural, vernacular school building. Rural, historic, frame school buildings are rare in Florida. The school was the community's recreation and social center during its historic period, 1921-1949.

**HISTORIC AND ARCHITECTURAL CONTEXT**

Bostwick was first settled in 1882. The community had a mill which provided railroad ties and wood for the railroad engines that ran between Jacksonville and Tampa, a Baptist Church, two general stores, and a log public school. In 1888, Putnam County had 74 public schools; Bostwick's log school was #32. Bostwick had daily mail delivery operating out of one of the stores. The sandy loam soil was used to cultivate oranges, lemons, and vegetables. From a population of 75, the town grew to 250 in 1918. By then there was a Western Union Telegraph office, telephone connection, and a Southern Express office. Vegetables, lumber, turpentine, and new cattle dipping vats were major local enterprises. The log public school was replaced in 1908 with a small frame building measuring 20'x40'. The school property was donated by community residents. The school was built with labor of local residents, and \$107.39 worth of materials; its furniture cost \$176.20. Teacher Berta Morrison was paid \$45 a month for the 6 month school year. The county school board in 1920 wished to consolidate public schools into centralized schools with the county providing transportation of students.

**SIGNIFICANCE**

In March of 1921, a committee from Bostwick requested a new school building from the Putnam County School Board. Their request was granted, and the work was completed in August of 1921. The builder and designer of the school was L.L. Johnson. He submitted a proposal for the two story building for a low bid of \$1000. Johnson's building design was nearly square, 40'x49'. With its central entrance with gable porch roof, main hip roof, central hall and four corner rooms, the school was patterned on the Georgian four-square plan. Except for the removal of the side room divider walls, the original arrangement and materials are retained to a very high degree.

The first school year in the new building commenced September, 1921. The school served grades from 1 through 8. Attendance was by the children of Bostwick and children bused to the school from the surrounding areas. Most years there were 4 teachers, one for each of the original classrooms, but in 1923, there were 5. From the 1940s through the mid 1950s, there were 3 teachers and 1 principal who taught the combined 7<sup>th</sup> and

United States Department of the Interior  
National Park Service

**NATIONAL REGISTER OF HISTORIC PLACES  
CONTINUATION SHEET**

Section number 8 Page 2 **BOSTWICK SCHOOL, BOSTWICK, PUTNAM  
COUNTY, FLORIDA**

8<sup>th</sup> grades. The other arrangements of grades were dependent on the size of the student body and the practical recombining of classes. The northeast room held the 1<sup>st</sup> and 2<sup>nd</sup> grades; the southeast the 7<sup>th</sup> and 8<sup>th</sup>; the northwest the 3<sup>rd</sup> and 4<sup>th</sup>; and the southwest the 5<sup>th</sup> and 6<sup>th</sup>. There was no electricity and light was from oil lanterns and reflectors.

In the first years, a school day opened with a short religious service on the second floor. Later the school began with the flag raising, a Bible reading, and announcements. These exercises were conducted outside weather permitting. Children brought their lunches or could walk home within Bostwick; they were given an hour for lunch. In 1940 a small kitchen was built into a second story room, and lunches were provided at a cost of 25 cents. Orange juice cost 10 cents, and milk 6 cents. Parents organized a PTA which helped with plays, carnivals, and dinners that marked graduations. The PTA petitioned the school board for the school's needs, and the parents taught arts and crafts. Graduating classes usually consisted of 8 to 10 students. At graduation ceremonies the girls wore white (sometimes blue) dresses, and the boys wore blue pants and white shirts. The girls were given bouquets of gladiolus, gardenias, and ferns by the local Hancock farm. Mr. Cubbage, a local store and motel owner, gave each graduate a silver dollar.

According to a former teacher, "the school was hub of the community." Mixed boys and girls baseball and volleyball teams were organized for after school activities. During the school's early years, annual Christmas plays and parties were hosted on the second floor of the school building. Without electricity, a Christmas tree was lit with candles, and Santa Claus distributed presents. Yearly Easter egg hunts were held at the school. In 1940, the PTA organized a Halloween carnival which was then held annually. A "spook house" was created, and each class organized a booth or entertainment. Many wore costumes, and it was a community event. Cake walks and boxed dinners were held to raise money. The cake walks were held on the second floor. People walked in a circle and passed a flag; the last person holding the flag when the circle stopped won the cake. "Dinner On the Green" was on the school grounds with baked goods and boxed dinners auctioned off. The purchaser got to eat with the woman who prepared the dinner. Each year the Ringling Brothers and Barnum and Bailey Circus unloaded at the Bostwick depot. The performers and animals paraded to the school ground and entertained under the trees.

The school also served as a community theater. Movies, often westerns, were rented, and for 25 cents admission the community was invited. Minstrel shows were performed at the school, and a county band, The Pearly Shivers Band with Jimmy Deese, Alvin Farmer, and Wonnie Thompson, played for the public. The Volunteer Firefighters Auxiliary, Boys Scouts, and Woodsmen of the World held their meetings at the school. The Bostwick Baptist Church also sometimes used the school facilities.

The school was used as the local precinct #21 polling place from July 1928 through 1956. In 1957, two new concrete block school buildings accommodated most of the educational functions, and its café-torium became the polling place. The historic school continued to house the school library, 4<sup>th</sup> and 5<sup>th</sup> grades, and the physical education program. After racial integration of the public schools in the mid-1960s, African-American students also attended the school, until it was closed in 1977.



**United States Department of the Interior  
National Park Service**

**NATIONAL REGISTER OF HISTORIC PLACES  
CONTINUATION SHEET**

Section number 9 Page 1 **BOSTWICK SCHOOL, BOSTWICK, PUTNAM  
COUNTY, FLORIDA**

---

**BIBLIOGRAPHY**

- Alvers, Nance Cooley, and Janice Smith Mahaffey, Our Place in Time, Palatka, Florida: Palatka Printing Co., 1995.
- Bush, George Gary, History of Education in Florida, Washington, D.C.: Washington Government Printing Office, 1889.
- Davis, Ladonna, interview with Jane Nedbalak, April 1999. Student from 1943-1951.
- De Golyn, Claude, interview with Jane Nedbalak, April 1999. Student from 1947-1951.
- Dowda, Robert Black, A History of Palatka and Putnam County, Palatka, Florida: The Putnam County Archives and History Commission, 19-.
- Gonzalz, Helen, interview with Jane Nedbalak, April 1999. Student 1932.
- King, Evelyn McGlohon Hillard, interview with Jane Nedbalak, April 1999. Student from 1928-1934.
- Michaels, Brian E., The River Flows North, Dallas, Texas: Taylor Publishing Co., 1986.
- Musick, Charlotte, interview with Jane Nedbalak, April 1999. Student from 1949-1956.
- Palatka Daily News Centennial Edition, 30 September 1986, Sec. 4C.
- Putnam County School Board Minutes, 1920-1977.
- Register, Doris, interview with Jane Nedbalak, April 1999. Student from 1928-1936.
- Revels, Nenee, interview with Jane Nedbalak, April 1999. Teacher from 1926-1927.
- Wilkinson, Charlie, interview with Jane Nedbalak, April 1999. Student from 1940-1948.
- Wilkinson, Vena, interview with Jane Nedbalak, April 1999. Student in 1920s.
- Williams, Isaiah, interview with Jane Nedbalak, April 1999. Student in 1920s.

United States Department of the Interior  
National Park Service

**NATIONAL REGISTER OF HISTORIC PLACES  
CONTINUATION SHEET**

Section number     9     Page     2    

**BOSTWICK SCHOOL, BOSTWICK, PUTNAM  
COUNTY, FLORIDA**

---

Willis, Lola, interview with Jane Nedbalak, April 1999. Student from 1946-1953.

Federal Writers Project, Works Progress Administration, Florida: A Guide to the Southernmost State, New York: Oxford University Press, 1939.

**United States Department of the Interior  
National Park Service**

**NATIONAL REGISTER OF HISTORIC PLACES  
CONTINUATION SHEET**

Section number 10 Page 1

**BOSTWICK SCHOOL, BOSTWICK, PUTNAM  
COUNTY, FLORIDA**

---

**VERBAL BOUNDARY DESCRIPTION**

BOSTWICK MBI P71 Pt of Blk 34 (Ex Bk146 P87 OR349 P869) +  
BK235 P405 - All of Blk 46 +  
That Pt of vacated Williams St.  
OR621 P1678 (Old Bostwick School)

**BOUNDARY JUSTIFICATION**

This boundary encompasses the property that has been historically associated with the Bostwick School.

**United States Department of the Interior  
National Park Service**

**NATIONAL REGISTER OF HISTORIC PLACES  
CONTINUATION SHEET**

Section number \_\_\_\_\_ Photos \_\_\_\_\_ Page 1

**BOSTWICK SCHOOL, BOSTWICK, PUTNAM  
COUNTY, FLORIDA**

---

**PHOTOGRAPHIC LISTING**

1. Bostwick School, 125 Tillman Street, Bostwick
2. Putnam County, Florida
3. Jane Nedbaled
4. March 1999
5. Nedbaled, Community Library, 125 Tillman St.
6. Historic school and 1956 school, looking south
7. Photo #1 of 12

Items 1-5 are the same for the following photographs except #11.

6. North, main facade, looking south
7. Photo #2 of 12
  
6. East elevation, looking west
7. Photo #3 of 12
  
6. West elevation, looking east
7. Photo #4 of 12
  
6. South elevation, looking north
7. Photo #5 of 12
  
6. Central hall, looking north
7. Photo #6 of 12
  
6. East classroom, looking southeast
7. Photo #7 of 12
  
6. West classroom, looking northwest
7. Photo #8 of 12
  
6. Enclosed stairway, looking north
7. Photo #9 of 12

**United States Department of the Interior  
National Park Service**

**NATIONAL REGISTER OF HISTORIC PLACES  
CONTINUATION SHEET**

Section number \_\_\_\_\_ Photos \_\_\_\_\_ Page 2

**BOSTWICK SCHOOL, BOSTWICK, PUTNAM  
COUNTY, FLORIDA**

---

6. Second floor, looking southeast

7. Photo #10 of 12

3. unknown

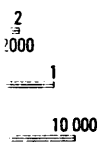
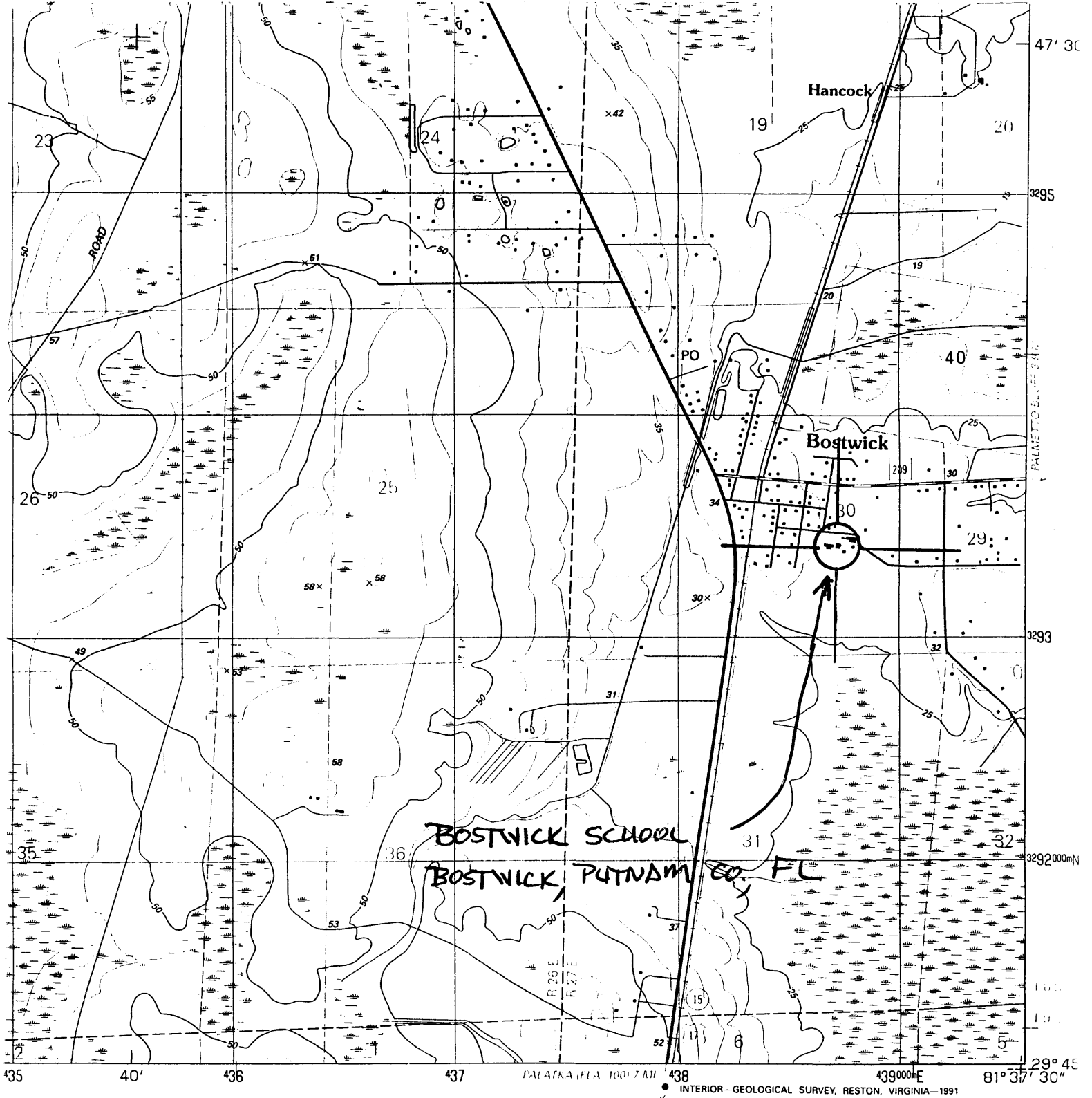
4. 1950s

6. Rear, south stairway, looking west

7. Photo #11 of 12

6. 1957 school, looking northwest

7. Photo #12 of 12



**ROAD CLASSIFICATION**

Primary highway, hard surface .....	Light-duty road, hard or improved surface ...
Secondary highway, hard surface .....	Unimproved road ...
Interstate Route	U. S. Route
	State Route
	County Route

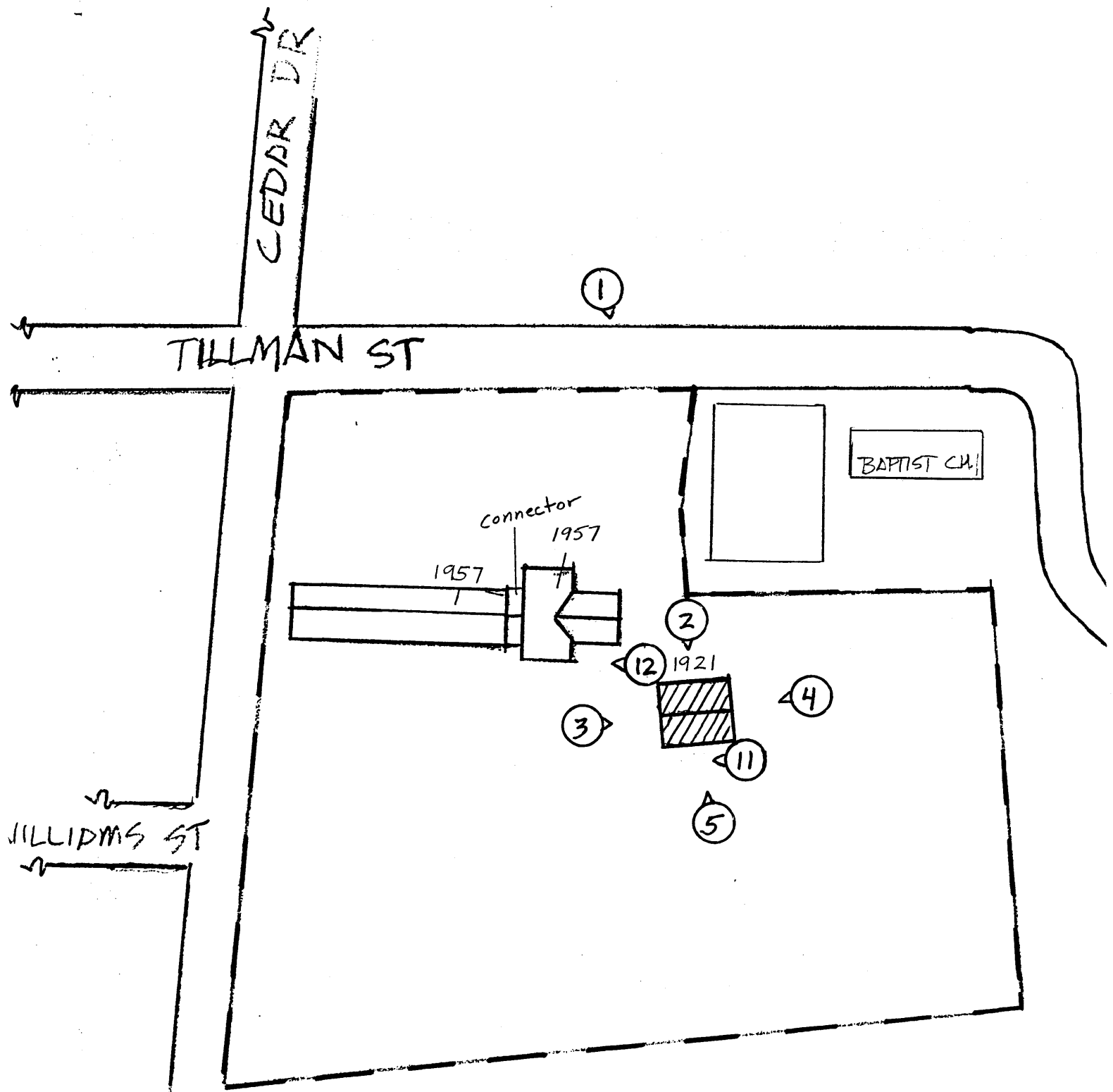
**BOSTWICK, FLA.**  
29081-G6-TF-024

**1991**

DMA 4643 I SW-SERIES V847

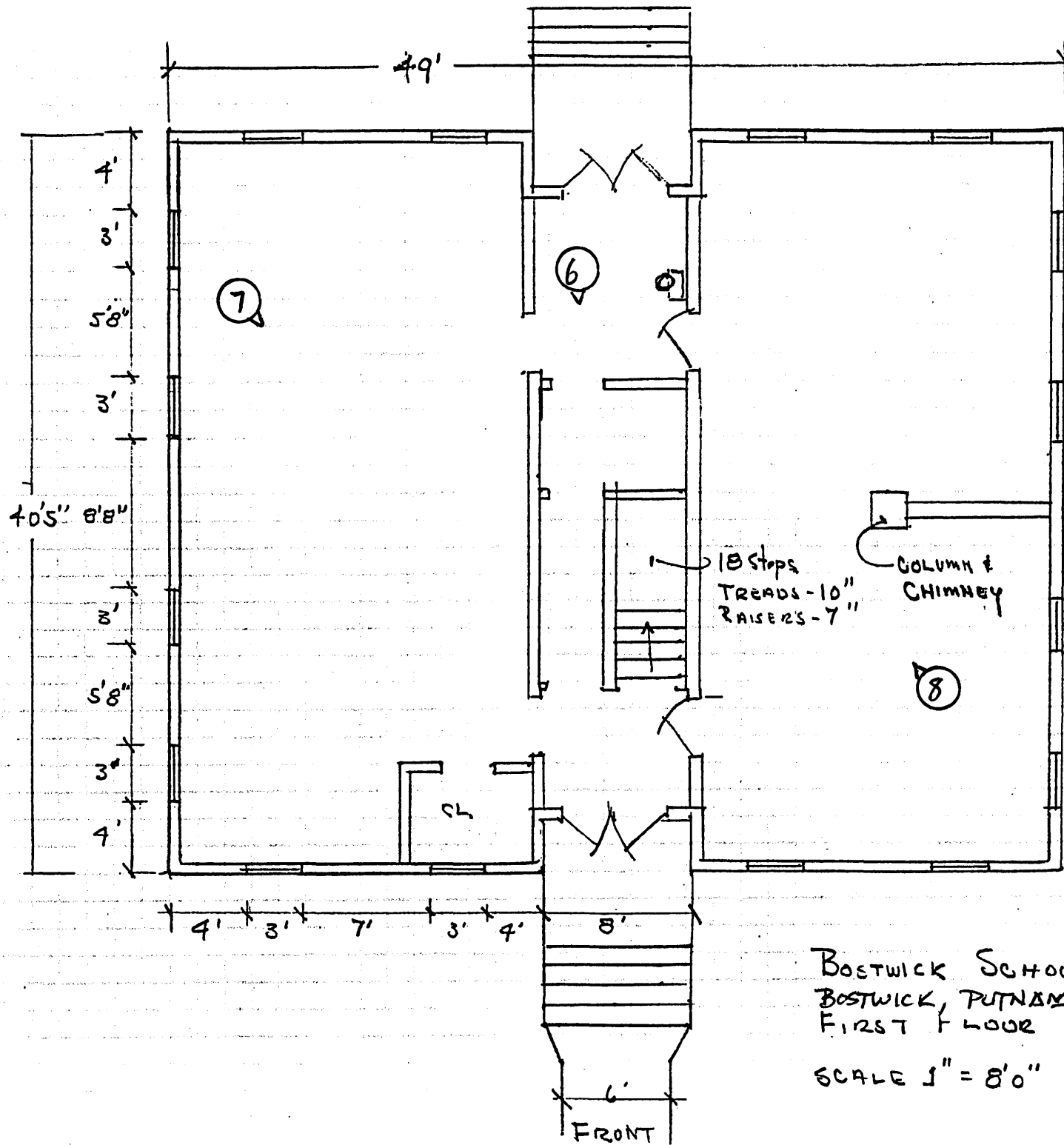
NIA 22092

*Old Bostwick School*



BOSTWICK SCHOOL  
 BOSTWICK, PUTNAM CO., FLORIDA  
 SITE, BOUNDARY & PHOTO MAP



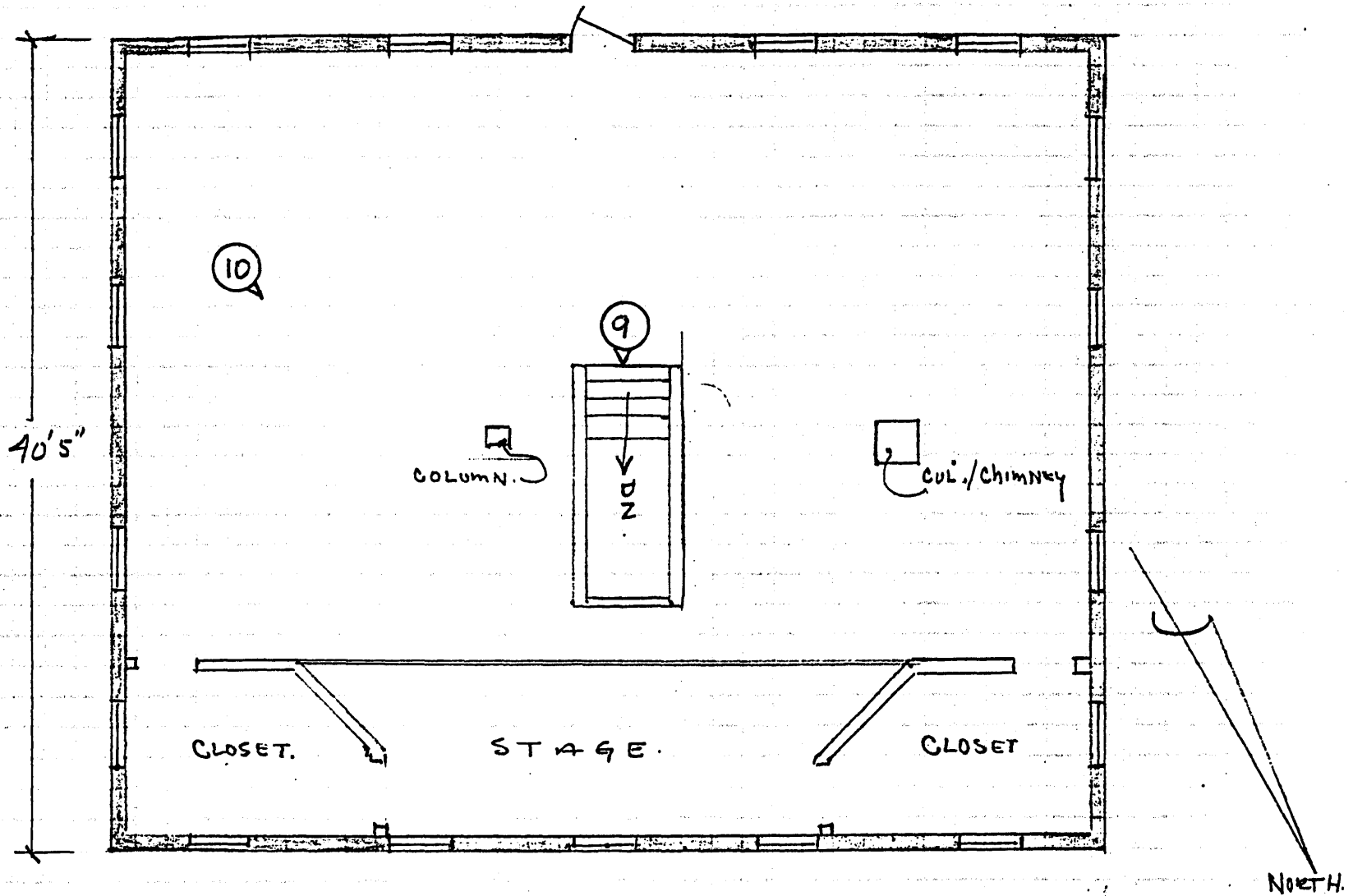


BOSTWICK SCHOOL BUILDING  
 BOSTWICK, PUTNAM CO., FLORIDA  
 FIRST FLOOR PLAN

SCALE 1" = 8'0"

I-27-99





BOSTWICK SCHOOL BUILDING  
SECOND FLOOR PLAN  
SCALE 1"=8'0"

1-27-99