

NATIONAL REGISTER OF HISTORIC PLACES NOMINATION

NPS Form 10-900

USDI/NPS NRHP Registration Form (Rev. 8-86)

OMB No. 1024-0018

Mer Rouge High School, Morehouse Parish, LA

Page 1

United States Department of the Interior, National Park Service

National Register of Historic Places Registration Form

1. NAME OF PROPERTY

Historic Name: Mer Rouge High School

Other Name/Site Number:



2. LOCATION

Street & Number 500 South 14th St.

Not for publication: NA

City/Town Mer Rouge

Vicinity: NA

State: Louisiana Code: LA County: Morehouse Code: 067 Zip Code: 71261

3. STATE/FEDERAL AGENCY CERTIFICATION

As the designated authority under the National Historic Preservation Act of 1966, as amended, I hereby certify that this X nomination request for determination of eligibility meets the documentation standards for registering properties in the National Register of Historic Places and meets the procedural and professional requirements set forth in 36 CFR Part 60. In my opinion, the property X meets does not meet the National Register Criteria.

Certifying official has considered the significance of this property in relation to other properties: Nationally: Statewide: Locally: X

Jonathan Fricker
Signature of Certifying Official/Title
Deputy SHPO, Dept. of Culture, Recreation and Tourism

January 28, 2004
Date

State or Federal Agency and Bureau

In my opinion, the property meets does not meet the National Register criteria.

Signature of Commenting or Other Official/Title
State or Federal Agency and Bureau

Date

NATIONAL REGISTER OF HISTORIC PLACES NOMINATION

NPS Form 10-900

USDI/NPS NRHP Registration Form (Rev. 8-86)

OMB No. 1024-0018

Mer Rouge High School, Morehouse Parish, LA

Page 2

United States Department of the Interior, National Park Service

National Register of Historic Places Registration Form

4. NATIONAL PARK SERVICE CERTIFICATION

I hereby certify that this property is:

- Entered in the National Register
Determined eligible for the National Register
Determined not eligible for the National Register
Removed from the National Register
Other (explain):

Signature of Keeper: Daniel J. Vini

Date of Action: March 4, 2004

5. CLASSIFICATION

Ownership of Property
Private:
Public-Local: X
Public-State:
Public-Federal:

Category of Property
Building(s): X
District:
Site:
Structure:
Object:

Number of Resources within Property
Contributing
1

Non contributing
buildings
sites
structures
objects
0 Total

Number of Contributing Resources Previously Listed in the National Register: 0

Name of Related Multiple Property Listing: NA

NATIONAL REGISTER OF HISTORIC PLACES NOMINATION

NPS Form 10-900

USDI/NPS NRHP Registration Form (Rev. 8-86)

OMB No. 1024-0018

Mer Rouge High School, Morehouse Parish, LA

Page 3

United States Department of the Interior, National Park Service

National Register of Historic Places Registration Form

6. FUNCTION OR USE

Historic: education Sub: school
Current: vacant Sub:

7. DESCRIPTION

Architectural Classification: Jacobean Revival; Bungalow
Materials:

Foundation: brick
Walls: brick
Roof: asphalt
Other: cast cement

NATIONAL REGISTER OF HISTORIC PLACES NOMINATION

NPS Form 10-900

USDI/NPS NRHP Registration Form (Rev. 8-86)

OMB No. 1024-0018

Mer Rouge High School, Morehouse Parish, LA

Page 4

United States Department of the Interior, National Park Service

National Register of Historic Places Registration Form

Describe Present and Historic Physical Appearance.

The Mer Rouge High School (1925) is a two-story, brown brick veneer-over-masonry building that combines the English Jacobean Revival with elements of the domestic Bungalow style, although the former is dominant. The school is located on a fairly large campus on the edge of the small community of Mer Rouge and it easily the largest historic building in town. Included in the nominated acreage is an elliptical driveway in front of the school, lined with mature trees, which gives every indication of being a historic landscape feature. Excluded from the nominated acreage are a free-standing gym and elementary school, dating from 1949, and located behind the candidate. (They do not contribute to the candidate's Register significance.) Alterations to Mer Rouge High have been confined to deterioration on the interior due to a leaky roof and covered walkways at the rear. The building has been vacant since 1997.

The Mer Rouge School is a symmetrical building with a central entrance (set in a slightly protruding pavilion) opening to a capacious front hall flanked by offices. The entrance hall leads to a main hall running from side to side which provides access to a pair of classrooms (set front to back) at each end of the building. These classroom pairs protrude slightly from the front of the building forming end pavilions. This yields the familiar five-part composition so common among early twentieth century schools. At the ends of the main hall (facing toward the rear) are a pair of staircases providing access to the second story. Here, each end of the building features a pair of classrooms set front to back, mirroring the ones below. Between the classroom wings, on the second story façade, is a long library/study hall. At the center of the rear elevation is a two-story auditorium wing.

As is typical of the era, rooms are lit by bands of multi-pane windows (in this case industrial type metal windows with the center section hinged from the top to open outwards). These support the overall Jacobean character of the building, Jacobean being one of very few historic architectural styles that routinely placed windows in groups. Another convincing Jacobean feature is the entrance pavilion (relatively vertical in proportion) which is marked by quoins in a contrasting color (white) and material (cast concrete), a 45 degree gable top and a strong classical style cast concrete entrance doorway (in this case Roman Doric). The entablature features triglyphs and a strapwork-like design. The multiple-layer cornice features small dentils. The double window over the entrance is set off in contrasting quoins as well, and the gable is given additional texture by the exclusive use of headers in the laying up of the brickwork. The gable culminates in a central crest. Classroom windows in the end pavilions are also set off in contrasting quoins in the Jacobean fashion. But instead of the usual Jacobean triangular gables, these pavilions are surmounted by Bungalow style jerkin-head gables with a pronounced kick. This roof style is echoed on the rear auditorium wing (without the kick). The eaves feature Bungalow-style struts.

The interiors for the most part are typical of a small town school of the period. Wooden doors with operable transoms above provide access to classrooms and offices. The classroom sets on the south side (upstairs and down) have a cloakroom between. The classrooms retain their original blackboards and wooden floors. The large auditorium is given far more architectural treatment that would be expected for a small country town. (As will be explained in Part 8, it served as Mer Rouge's community center, where all manner of events were held.) Seating for 503 is provided on the ground floor and in a balcony. The fixed seating is original. The windows are set off by colossal pilasters. The ceiling has a paneled treatment, and dentils ornament a pronounced cornice. The highlight of the impressive space is the squared-off cast plaster proscenium which is richly worked with various decorative motifs, including large anthemions, a rope design, bead-and-reel, papyrus leaves, and other plant and floral forms.

NATIONAL REGISTER OF HISTORIC PLACES NOMINATION

NPS Form 10-900

USDI/NPS NRHP Registration Form (Rev. 8-86)

OMB No. 1024-0018

Mer Rouge High School, Morehouse Parish, LA

Page 5

United States Department of the Interior, National Park Service

National Register of Historic Places Registration Form

With the exception of two covered walkways attached to the auditorium wing (providing access to the 1949 buildings), the exterior is unaltered. The interior has suffered some deterioration (fairly notable in one room) due to a leaky roof, and there is some rot evident in the eaves. It is the hope of the Morehouse Parish School Board and various local graduates that National Register listing will provide additional impetus to a nascent "Save our School" campaign (as it has for the nearby Bastrop High School, also in Morehouse Parish, listed on the Register in 2002). In terms of National Register guidelines, there are no integrity issues. The building would still be readily identifiable to someone who attended events there during the historic period.

8. STATEMENT OF SIGNIFICANCE

Applicable National
Register Criteria:

A X B _ C _ D _

Criteria Considerations
(Exceptions): NA

A _ B _ C _ D _ E _ F _ G _

Areas of Significance: education; recreation and entertainment

Period(s) of Significance: 1925-1953 (recreation and entertainment)
1925 (education)

Significant Dates: NA

Significant Person(s): NA

Cultural Affiliation: NA

Architect/Builder: J.W. Smith Architects (Monroe, LA)

NATIONAL REGISTER OF HISTORIC PLACES NOMINATION

NPS Form 10-900

USDI/NPS NRHP Registration Form (Rev. 8-86)

OMB No. 1024-0018

Mer Rouge High School, Morehouse Parish, LA

Page 6

United States Department of the Interior, National Park Service

National Register of Historic Places Registration Form

State Significance of Property, and Justify Criteria, Criteria Considerations, and Areas and Periods of Significance Noted Above.

The Mer Rouge High School is of local significance as a milestone in the history of public education in the community, and perhaps even more importantly, its auditorium was Mer Rouge's community center. As one longtime citizen explained, in rural areas, schools were much more than just schools; they were the "heart of the community," where all manner of large events took place. The period of significance as a community center continued well past the Register's present fifty year cutoff (1953). The period of significance under education is 1925 because it is the very opening of the school that was the milestone.

Like rural Louisiana on the whole, public education was in its infancy in Mer Rouge at the turn of the twentieth century. Information is sketchy for this early period, but it is known that the first public school in Mer Rouge proper, apparently in the 1890s, was conducted in a rambling one story frame residential-looking building. The school remained in this location until 1912, when the school district passed a tax to buy property and construct a new school building. The 1913 school, two stories and of brick construction, represents a definite chapter in the history of public education in small Louisiana towns – the arrival of "modern brick" schools in the early years of the twentieth century. The long demolished, almost square building appears from an old photo to have had eight large classrooms. Its footprint (per a 1919 Sanborn map) is not as large as that of the candidate. As was typical of the period, grades 1 through 11 were taught in the one building.

By the 1920s public education had advanced sufficiently in Mer Rouge to warrant the construction of a separate building for the high school grades (8-11 at that time). The community, however, did not experience the population explosion of Bastrop, the Morehouse Parish seat, which placed tremendous strains on the school infrastructure. The Mer Rouge population was 656 in 1920 and 669 in 1930. Enrollment in the high school for the 1925-1935 period was between 60 and 70 (per a 1935 publication).

Although the foregoing is certainly not as dramatic as the transition from a ramshackle frame school to a large modern brick school (as was sometimes the case), the erection of the small rural community's first purpose-built high school was obviously a milestone – one of symbolic as well as tangible value. In fact, it's actually quite a large and impressive building for an enrollment in the first decade of between 60 and 70. (Enrollment swelled to 107 in the 1927-28 term.) Now the high school had its own building with eight large classrooms (some of which were science laboratories) and a quite large sunny library/study hall. And for the first time, the school system had an auditorium for all manner of school activities (plays, graduation, etc.). Regrettably, the new school's dedication did not make the parish newspaper, but based on research for other similar nominations, it must have been a time of great pride in the accomplishments of a fairly young public school system in a small rural community.

Longtime citizens of Mer Rouge interviewed for this nomination remember the building fondly not only from their school days, but also as the place for any community activity of any size. (There were no other venues -- no large space in a town hall, for instance.) Any "big" event, they reminisced, was at the school. It was the "heart of the community." Examples from the historic period include minstrel shows, dance recitals, recitals for private music lessons, the senior class play, performances by Centenary College choir (Shreveport, LA), Halloween carnivals, and the community's Christmas festivities. Again, these were community-wide events, not school events. Christmas was remembered with particular nostalgia – a huge tree on the stage and the arrival of Santa. In the pre-television age, these were eagerly awaited diversions in rural America, and Mer Rouge was no exception. The school auditorium was also used by the Home

NATIONAL REGISTER OF HISTORIC PLACES NOMINATION

NPS Form 10-900

USDI/NPS NRHP Registration Form (Rev. 8-86)

OMB No. 1024-0018

Mer Rouge High School, Morehouse Parish, LA

Page 7

United States Department of the Interior, National Park Service

National Register of Historic Places Registration Form

Demonstration Club agent to teach classes from home canning to crafts such as weaving.

9. MAJOR BIBLIOGRAPHICAL REFERENCES

Bonner, Walter. "A Brief History of the Mer Rouge School." Typescript copy in National Register file, Louisiana Division of Historic Preservation. Based upon research mainly in primary sources, including school board minutes.

Historic photos of early schools in Mer Rouge. Copies in National Register file, Louisiana Division of Historic Preservation.

Interviews with long-time residents of Mer Rouge who recall the building's use as a community center during the historic period. Conducted by Donna Fricker, Division of Historic Preservation, September 2003.

Previous documentation on file (NPS): NA

- Preliminary Determination of Individual Listing (36 CFR 67) has been requested.
- Previously Listed in the National Register. (partially)
- Previously Determined Eligible by the National Register.
- Designated a National Historic Landmark.
- Recorded by Historic American Buildings Survey: #
- Recorded by Historic American Engineering Record: #

Primary Location of Additional Data:

- State Historic Preservation Office
- Other State Agency
- Federal Agency
- Local Government
- University
- Other (Specify Repository):

NATIONAL REGISTER OF HISTORIC PLACES NOMINATION

NPS Form 10-900

USDI/NPS NRHP Registration Form (Rev. 8-86)

OMB No. 1024-0018

Mer Rouge High School, Morehouse Parish, LA

Page 8

United States Department of the Interior, National Park Service

National Register of Historic Places Registration Form

10. GEOGRAPHICAL DATA

Acreeage of Property: approx. 1 acre

UTM References: **Zone Easting Northing**
 15 612800 3626460

Verbal Boundary Description: See attached sketch map.

Boundary Justification:

Boundaries were chosen to encompass the candidate and its historic front driveway while eliminating unnecessary vacant land to the sides and non-contributing buildings to the rear.

11. FORM PREPARED BY

Name/Title: National Register staff (assisted by local historian Walter Bonner)

Address: Division of Historic Preservation, P. O. Box 44247, Baton Rouge, Louisiana 70804

Telephone: (225) 342-8160

Date: November 2003

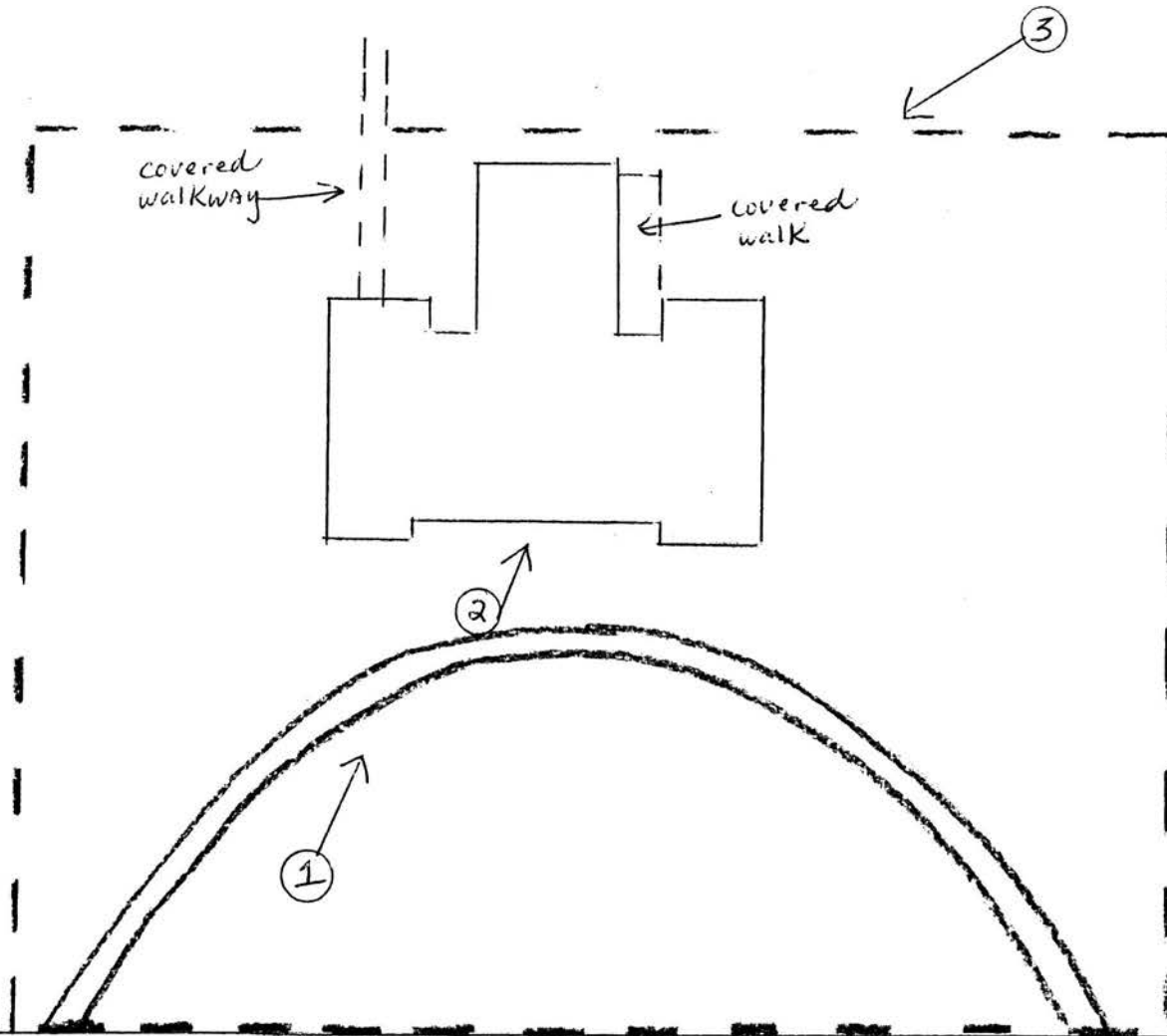
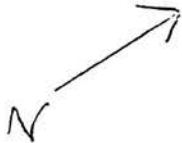
PROPERTY OWNERS

Morehouse Parish School Board
P. O. Box 872
Bastrop, LA 71220

Mer Rouge High School
Morehouse Parish, LA

1" = 40'

--- BOUNDARY



LA HWY 138 (South 14th St.)



Mer Rouge High School
Morehouse Parish, LA

Donna Fricker
LA SHPO

NOV 2003

Photo 1 of 7
North / NW



Mer Rouge High School
Morehouse Parish, LA

Donna Fricker

LA SHPO

Nov 2003

Photo 2 of 7

North / NW



Mer Rouge High School
Morehouse Parish, LA

Donna Fricker

LA SHPO

Nov 2003

Photo 3 of 7

South

2 114 1 1 117 2004 72 5.2.0103



Mer Rouge High School
Morehouse Parish, LA

Donna Fricker
LA SHPD

Nov 2003

Photo 4 of 7
Classroom



Mer Rouge High School
Morehouse Parish, LA

Donna Fricker

LA SHPO

Nov 2003

Photo 5 of 7

Auditorium

00000000 00 718 019 1 X 192 2



Mer Rouge High School

Morehouse Parish, LA

Donna Fricker

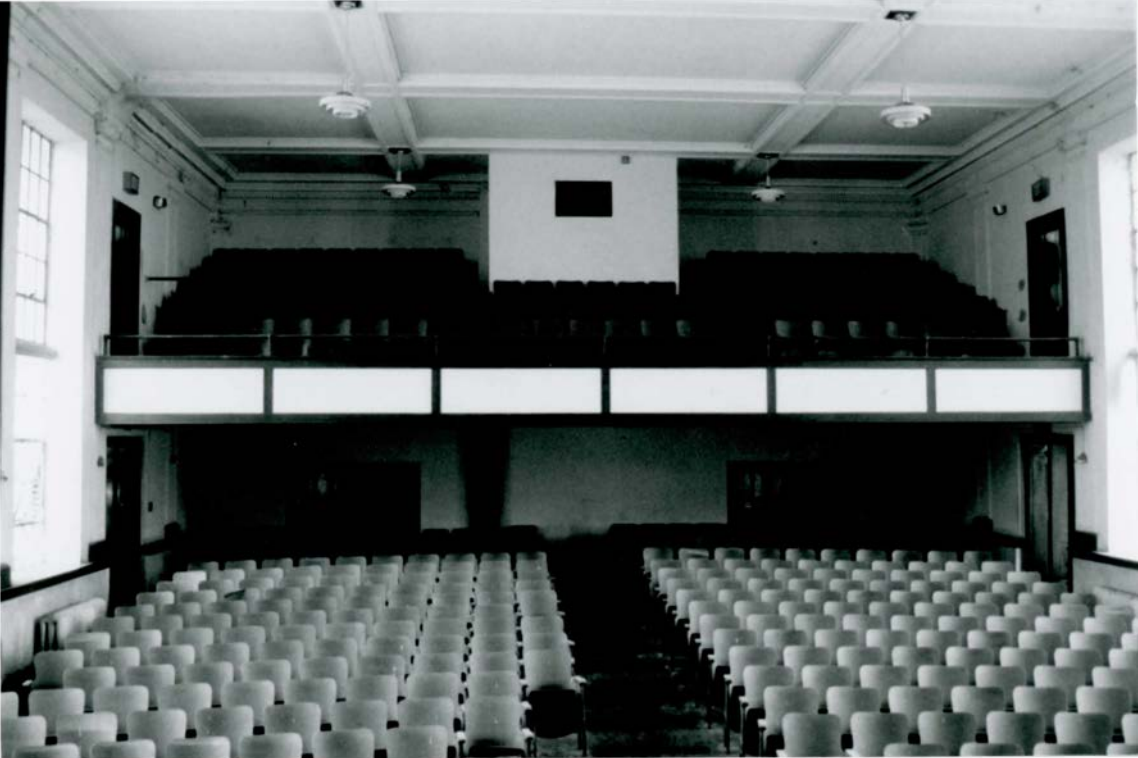
LA SHPO

Nov 2003

Photo 6 of 7

Proscenium detail

© 2003 by the Louisiana State Historic Preservation Office



Mer Rouge High School
Morehouse Parish, LA

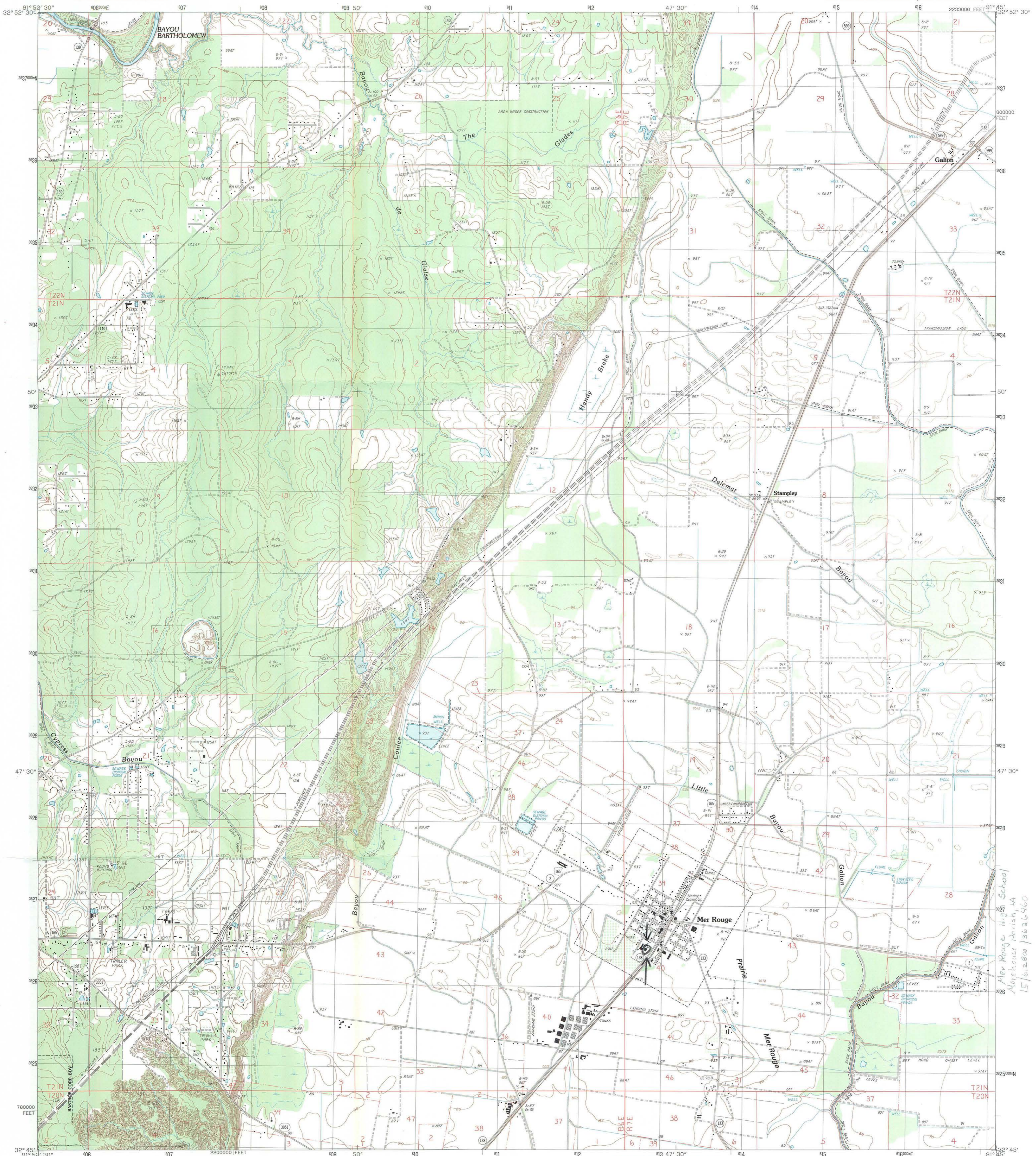
Donna Fricker

LA SHPO

Nov 2003

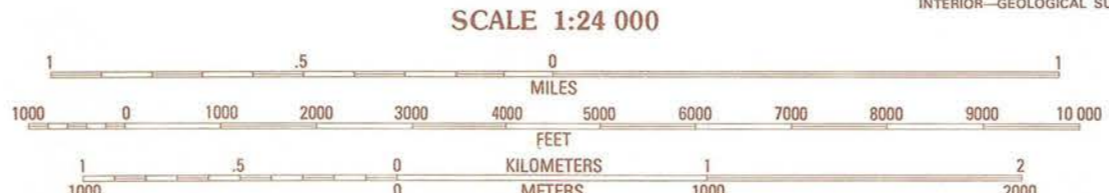
Photo 7 of 7

Auditorium



PRODUCED BY THE UNITED STATES GEOLOGICAL SURVEY
CONTROL BY THE UNITED STATES GEOLOGICAL SURVEY
COMPILED FROM AERIAL PHOTOGRAPHS TAKEN 1982
FIELD CHECKED 1988. MAP EDITED 1988
PROJECTION LAMBERT CONFORMAL CONIC
GRID: 1000-METER UNIVERSAL TRANSVERSE MERCATOR ZONE 15
UTM GRID DECLINATION 1983
UTM GRID DECLINATION 1983
1988 MAGNETIC NORTH DECLINATION 3°30' EAST
VERTICAL DATUM NATIONAL GEODETIC VERTICAL DATUM OF 1989
HORIZONTAL DATUM 1983 NORTH AMERICAN DATUM
To place on the predicted North American Datum of 1983,
move the projection lines as shown by dashed corner ticks
(12 meters south and 12 meters east)
There may be private inholdings within the boundaries of any
Federal or State reservations shown on this map
No distinction made between houses, barns, and other buildings

PROVISIONAL MAP
Produced from original
manuscript drawings. In-
formation shown as of date of
photography.



CONTOUR INTERVAL 5 FEET
CONTROL ELEVATIONS SHOWN TO THE NEAREST 0.1 FOOT
OTHER ELEVATIONS SHOWN TO THE NEAREST FOOT
To convert feet to meters multiply by .3048
To convert meters to feet multiply by 3.2808

THIS MAP COMPLIES WITH NATIONAL MAP ACCURACY STANDARDS
FOR SALE BY U.S. GEOLOGICAL SURVEY
DENVER, COLORADO 80225, OR RESTON, VIRGINIA 22092
AND LOUISIANA DEPARTMENT OF PUBLIC WORKS, BATON ROUGE, LOUISIANA 70804



ROAD LEGEND

1	2	3	4	5	6	7	8
Beekman	Twin Oaks	Bonita	Bastrop	Bonita SW	Collinston West	Collinston East	Whitney Island North

Improved Road
Unimproved Road
Trail

Interstate Route U.S. Route State Route

MER ROUGE, LOUISIANA
SEA BASTROP 15' QUADRANGLE
PROVISIONAL EDITION 1988

32091-G7-TF-024

Mer Rouge High School
Morehouse Parish, LA
15/6/2008 13626460

17P

UNITED STATES DEPARTMENT OF THE INTERIOR
NATIONAL PARK SERVICE

NATIONAL REGISTER OF HISTORIC PLACES
EVALUATION/RETURN SHEET

REQUESTED ACTION: NOMINATION

PROPERTY NAME: Mer Rouge High School

MULTIPLE NAME:

STATE & COUNTY: LOUISIANA, Morehouse

DATE RECEIVED: 1/30/04 DATE OF PENDING LIST: 2/13/04
DATE OF 16TH DAY: 2/28/04 DATE OF 45TH DAY: 3/14/04
DATE OF WEEKLY LIST:

REFERENCE NUMBER: 04000145

REASONS FOR REVIEW:

APPEAL: N DATA PROBLEM: N LANDSCAPE: N LESS THAN 50 YEARS: N
OTHER: N PDIL: N PERIOD: N PROGRAM UNAPPROVED: N
REQUEST: N SAMPLE: N SLR DRAFT: Y NATIONAL: N

COMMENT WAIVER: N

ACCEPT RETURN REJECT _____ DATE

ABSTRACT/SUMMARY COMMENTS:

The Mer Rouge High School is locally significant under Criterion A for its role in educational and civic entertainment in Morehouse Parish from the 1920s through the early 1950s. Built in 1925 in the Jacobean Revival style with Craftsman accents, the school is a two-story brick building situated on the edge of Mer Rouge. It was the first public high school erected in the community. The building is significant not only in public education but also in entertainment and recreation. Its auditorium was the only large facility in Mer Rouge that could accommodate civic events, and during the historic period it was used for minstrel shows, dance recitals, Halloween carnivals, and Christmas festivities. The school retains integrity from its period of significance and reflects the history of education, entertainment, and recreation in Morehouse Parish.

RECOM./CRITERIA Accept A

REVIEWER Daniel Vivian

TELEPHONE (202) 354-2252

DISCIPLINE Historian

DATE 3/4/04

DOCUMENTATION see attached comments Y/N see attached SLR Y/N

If a nomination is returned to the nominating authority, the nomination is no longer under consideration by the NPS.



KATHLEEN BABINEAUX BLANCO
LIEUTENANT GOVERNOR

State of Louisiana
OFFICE OF THE LIEUTENANT GOVERNOR
DEPARTMENT OF CULTURE, RECREATION & TOURISM
OFFICE OF CULTURAL DEVELOPMENT
DIVISION OF HISTORIC PRESERVATION

PHILLIP J. JONES
SECRETARY

LAUREL WYCKOFF
ASSISTANT SECRETARY

January 28, 2004

National Park Service
National Register of Historic Places
1201 Eye Street, NW, 8th floor
Washington, D.C. 20005



Re: Mer Rouge High School, Morehouse Parish, LA

To Whom It May Concern:

Enclosed please find a nomination form with supporting materials for the above referenced property. Should you have any questions, please contact me at 225-342-8160.

Sincerely,

Donna Fricker

Donna Fricker
National Register Coordinator

DF/df