



WENATCHEE FIRE DEPARTMENT

FIRE DEPT.
NO PARKING

WENATCHEE FIRE STATION #1
136 S. CHELAN
WENATCHEE, WA

MAY 2004

MAIN FACADE"
1 OF 15

Wenatchee Fire Station No. 1
136 S. Chelan
Wenatchee, Washington
E Elevation (Front of building),
doors closed, Photo taken, May, 2004



WEHATCHEE FIRE DEPARTMENT

FIRE DEPT.

NO PARKING

WENATCHEE FIRE STATION #1

136 S. CHELAN

WENATCHEE, WA

MAY 2004

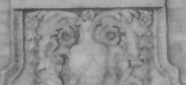
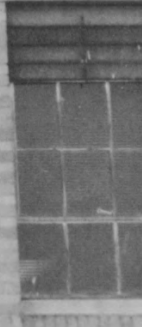
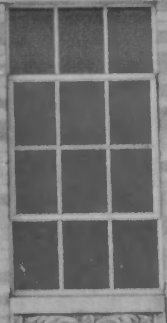
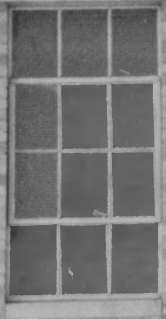
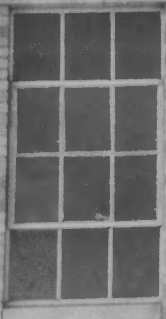
" MAIN FACADE "

2 CIF-15

Wenatchee Fire Station No. 1
136 S. Chelan
Wenatchee, Washington
E Elevation (Front of building),
Detail, Photo taken, May, 2004



WENATCHEE FIRE DEPARTMENT



WENATCHEE FIRE STATION #1

136 S. CHELAN

WENATCHEE, WA

MAY 2004

"MAIN FACADE PARAPET"

30F15

Wenatchee Fire Station No. 1
136 S. Chelan
Wenatchee, Washington
E Elevation (Front of building),
Detail 2, Photo taken, May, 2004



WENATCHEE FIRE
STATION #1

136 S. CHelan

WENATCHEE, WA

MAY 2004

"MAIN ENTRY DETAIL"

4 OF 15

Wenatchee Fire Station No. 1
136 S. Chelan
Wenatchee, Washington
E Elevation (Front of building),
Detail of entry, Photo taken, May, 2004



CHELAN AVE

ONE WAY
←

WENATCHEE FIRE DEPARTMENT

FIRE DEPT
NO PARKING

FIRE DEPT
NO PARKING

WENATCHEE FIRE STATION #1

136 S. CHELAN

WENATCHEE, WA

MAY 2004

"SE ELEVATION"

5 OF 15

Wenatchee Fire Station No. 1
136 S. Chelan
Wenatchee, Washington
SE Elevation, Doors Closed, May, 2004



WENATCHEE FIRE STATION #1

136 S. CHELAN

WENATCHEE, WA

MAY 2004

"SOUTH ELEVATION"

6 OF 15

Wenatchee Fire Station No. 1
136 S. Chelan
Wenatchee, Washington
South Elevation, May 2004



WENATCHEE FIRE STATION #1

136 S. CHELAN

WENATCHEE, WA

MAY 2004

"WEST ELEVATION"

7 OF 15

Wenatchee Fire Station No. 1
136 S. Chelan
Wenatchee, Washington
West Elevation, May 2004



WENATCHEE FIRE STATION #1

136 S. CHELAN

WENATCHEE, WA

MAY 2004

"WEST ELEVATION"

8 OF 15

Wenatchee Fire Station No. 1

136 S. Chelan

Wenatchee, Washington

West Elevation w/parking lot, May 2004



WENATCHEE FIRE STATION #1

136 S. CHELAN

WENATCHEE, WA

MAY 2004

"NORTH ELEVATION"

9 OF 15

Wenatchee Fire Station No. 1
136 S. Chelan
Wenatchee, Washington
North Elevation, May 2004



WENATCHEE FIRE

SEALWOOD
HOT PLUMB

WENATCHEE FIRE STATION #1

136 S. CHELAN

WENATCHEE, WA

MAY 2004

"INTERIOR 1ST FLOOR BAYS"

10 OF 15

Wenatchee Fire Station No. 1
136 S. Chelan
Wenatchee, Washington
Interior, first floor, engine bays and offices
May, 2004



WENATCHEE FIRE STATION #1

136 S. CHELAN

WENATCHEE, WA

MAY 2004

" INTERIOR BAY LOOKING OUT

11 OF 15

Wenatchee Fire Station No. 1
136 S. Chelan
Wenatchee, Washington
Interior, first floor, south bay to street
May, 2004



Various notices and papers pinned to the bulletin board on the left wall. One prominent notice reads "SAFE KIDS" with a logo and text below it. Other papers are partially legible but mostly illegible due to the image quality.

A large bulletin board on the right wall, featuring several sheets of paper, possibly a calendar or a project plan, and some smaller notes pinned to it.



WENATCHEE FIRE STATION #1

136 S. CHELAN

WENATCHEE, WA

MAY 2004

" INTERIOR 2ND FLOOR ADMIN "

12 OF 15

Wenatchee Fire Station No. 1

136 S. Chelan

Wenatchee, Washington

Interior, second floor to admin. Offices from
first floor stairwell. May. 2004



WENATCHEE FIRE STATION #1

136 S. CHELAN

WENATCHEE, WA

MAY 2004

"MEETING ROOM"

13 OF 15

Wenatchee Fire Station No. 1
136 S. Chelan
Wenatchee, Washington
Interior, second floor meeting room,
May. 2004



WENATCHEE FIRE DEPARTMENT

Fire Department - Wenatchee

Burrell
Studio
-14

WENATCHEE FIRE STATION #1

136 S. CHELAN

WENATCHEE, WA

MAY 2004

" CIRCA 1929 "

14 OF 15

**Wenatchee Fire Station No. 1
136 S. Chelan
Wenatchee, Washington
SE Elevation, Doors Closed, circa 1929**



WENATCHEE FIRE DEPARTMENT

Simmer
5139

WENATCHEE FIRE STATION #1

136 S. CHELAN

WENATCHEE, WA

MAY 2024

"CIRCA 1929"

15 OF 15

Wenatchee Fire Station No. 1
136 S. Chelan
Wenatchee, Washington
SE Elevation, With Fire Engines,
circa 1929