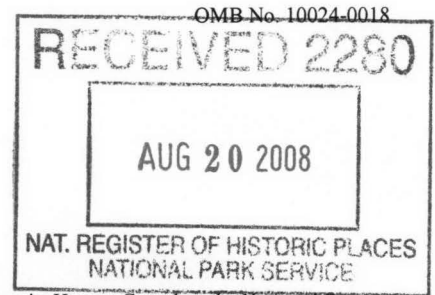


United States Department of the Interior
National Park Service

National Register of Historic Places
Registration Form

This form is for use in nominating or requesting determinations for individual properties and districts. See instructions in *How to Complete the National Register of Historic Places Registration Form* (National Register Bulletin 16A). Complete each item by marking "x" in the appropriate box or by entering the information requested. If an item does not apply to the property being documented, enter "N/A" for "not applicable." For functions, architectural classification, materials, and areas of significance, enter only categories and subcategories from the instructions. Place additional entries and narrative items on continuation sheets (NPS Form 10-900a). Use a typewriter, word processor, or computer, to complete all items.



1. Name of Property

historic name Erwin Auxiliary Army Airfield

other names/site number Site #JA0519

2. Location

street & number Northeast of the AR 14 and Jackson Road 917 intersection

☐ not for publication

city or town Newport

☒ vicinity

state Arkansas code AR county Jackson code 067 zip code 72112

3. State/Federal Agency Certification

As the designated authority under the National Historic Preservation Act, as amended, I hereby certify that this ☒ nomination ☐ request for determination of eligibility meets the documentation standards for registering properties in the National Register of Historic Places and meets the procedural and professional requirements set for in 36 CFR Part 60. In my opinion, the property ☒ meets ☐ does not meet the National Register criteria. I recommend that this property be considered significant ☐ nationally ☐ statewide ☒ locally. (See continuation sheet for additional comments.)

Cathie Matthews
Signature of certifying official/Title

7/28/08
Date

Arkansas Historic Preservation Program

State or Federal agency and bureau

In my opinion, the property ☐ meets ☐ does not meet the National Register criteria. (☐ See Continuation sheet for additional comments.)

Signature of certifying official/Title

Date

State or Federal agency and bureau

4. National Park Service Certification

I hereby certify that the property is:

☒ entered in the National Register.

☐ See continuation sheet

☐ determined eligible for the
National Register.

☐ See continuation sheet

☐ determined not eligible for the
National Register.

☐ removed from the National
Register.

☐ other, (explain:)

Signature of the Keeper

Date of Action

Patrick Anderson

10/3/2008

Erwin Auxiliary Army Airfield
Name of Property

Jackson County, Arkansas
County and State

5. Classification

Ownership of Property

(Check as many boxes as apply)

- ☐ private
☐ public-local
☒ public-State
☐ public-Federal

Category of Property

(Check only one box)

- ☐ building(s)
☐ district
☐ site
☒ structure
☐ object

Number of Resources within Property

(Do not include previously listed resources in count.)

Contributing

Noncontributing

	2	buildings
		sites
1		structures
		objects
1	2	Total

Name of related multiple property listing

(Enter "N/A" if property is not part of a multiple property listing.)

We've Gotta Get Tough: History of WWII Home front
Efforts in Arkansas, 1941-1946

Number of Contributing resources previously listed in the National Register

6. Function or Use

Historic Functions

(Enter categories from instructions)

TRANSPORTATION/air-related

DEFENSE/air facility

Current Functions

(Enter categories from instructions)

AGRICULTURE/SUBSISTENCE/agricultural field

7. Description

Architectural Classification

(Enter categories from instructions)

N/A

Materials

(Enter categories from instructions)

foundation N/A

walls N/A

roof N/A

other ASPHALT

Narrative Description

(Describe the historic and current condition of the property on one or more continuation sheets.)

United States Department of the Interior
National Park Service

National Register of Historic Places Continuation Sheet

Section number 7 Page 1

SUMMARY

The Erwin Auxiliary Airfield is a c.1942 airfield located southeast of Newport, Jackson County, Arkansas, at the northeast corner of AR 14 and Jackson Road 917. The airfield consists of two asphalt runways and two asphalt taxiways, oriented northeast-southwest and northwest-southeast. In addition to the airfield, the nominated property consists of three buildings, which are non-contributing, that are associated with the current agricultural use of the property.

ELABORATION

The Erwin Auxiliary Airfield is a c.1942 airfield located southeast of Newport, Jackson County, Arkansas, at the northeast corner of AR 14 and Jackson Road 917. The airfield consists of two asphalt runways and two asphalt taxiways, oriented northeast-southwest and northwest-southeast. Each of the runways measures 40-46 meters wide and they are 1,375 meters long. The taxiways are 14-16 meters wide and 1,375 meters long. The taxiways are connected to the runways at each end and additional connectors are located near the northeastern or southeastern end of each runway and taxiway.

In addition to the airfield, the nominated property consists of three buildings, which are non-contributing, that are associated with the current agricultural use of the property.

Integrity

Overall, the Erwin Auxiliary Army Airfield retains good integrity. Given the fact that the field has been abandoned for over 40 years, the asphalt has deteriorated in some areas and grass has started to grow through the runway and taxiway surfaces. However, the layout of the runways and taxiways is still discernible on the ground and readily apparent from the air. Although the construction of U.S. 67 to the west of the field involved the construction of a chain-link fence across the northwestern end of the taxiway to mark the edge of the highway right-of-way, the impact to the airfield itself was minimal. Also, the three non-contributing buildings that have been constructed to support the current agricultural use of the property are small in scale when compared to the size of the airfield. In addition, the area of Jackson County where the airfield is located has retained the rural feel from the time of its construction c.1942.

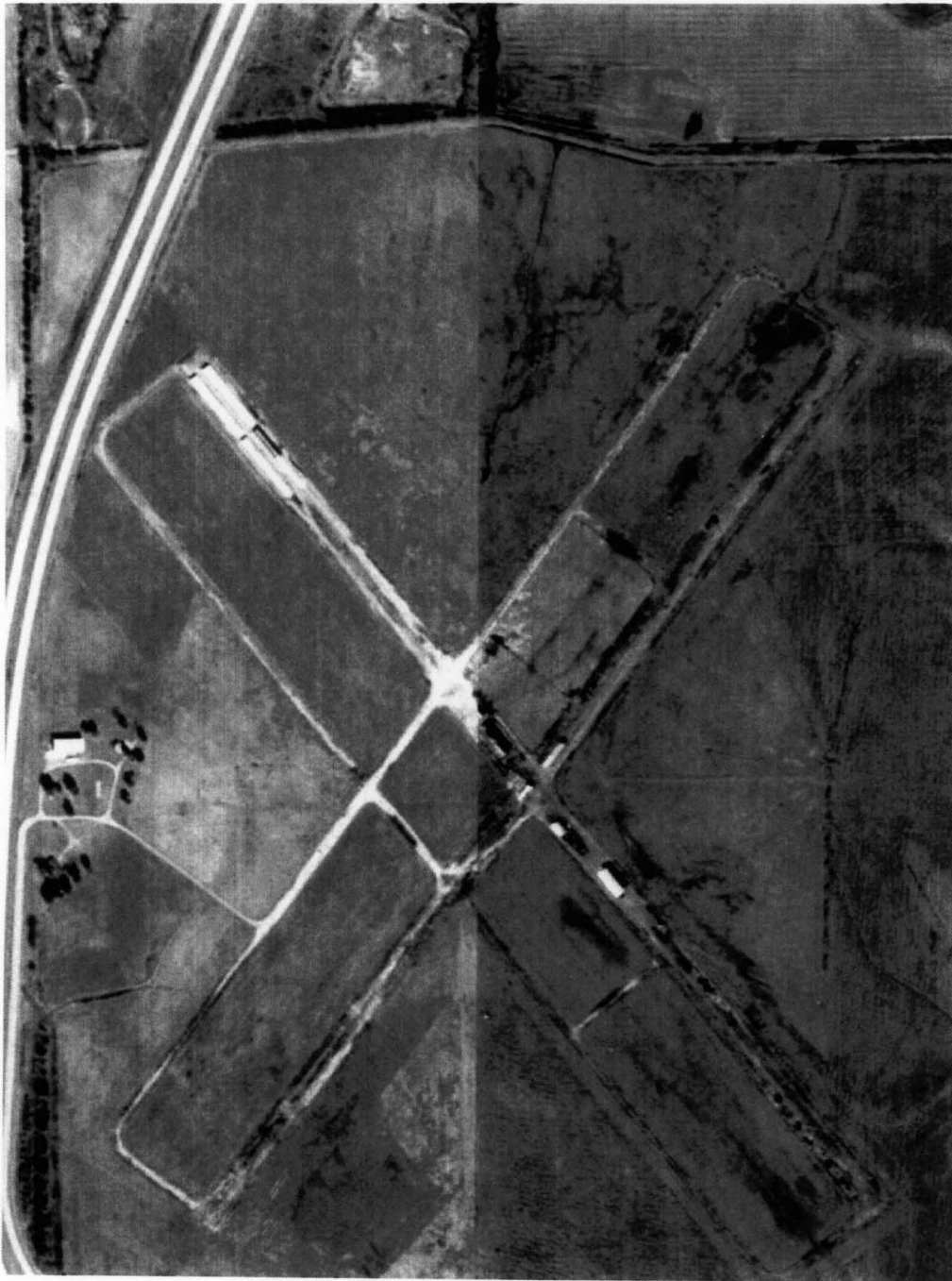
Erwin Auxiliary Army Airfield
Name of Property

Jackson County, Arkansas
County and State

United States Department of the Interior
National Park Service

National Register of Historic Places Continuation Sheet

Section number 7 Page 2



Erwin Auxiliary Army Airfield Aerial Photograph

8. Statement of Significance**Applicable National Register Criteria**

(Mark "x" in one or more boxes for the criteria qualifying the property for National Register listing.)

- ☒ **A** Property is associated with events that have made a significant contribution to the broad patterns of our history.
- ☐ **B** Property is associated with the lives of persons significant in our past.
- ☐ **C** Property embodies the distinctive characteristics of a type, period, or method of construction or represents the work of a master, or possesses high artistic values, or represents a significant and distinguishable entity whose components lack individual distinction.
- ☐ **D** Property has yielded, or is likely to yield, information important in prehistory or history.

Criteria Considerations

(Mark "x" in all the boxes that apply.)

Property is:

- ☐ **A** owned by a religious institution or used for religious purposes.
- ☐ **B** removed from its original location.
- ☐ **C** birthplace or grave of a historical figure of outstanding importance.
- ☐ **D** a cemetery.
- ☐ **E** a reconstructed building, object, or structure.
- ☐ **F** a commemorative property
- ☐ **G** less than 50 years of age or achieved significance within the past 50 years.

Levels of Significance (local, state, national)

Local

Areas of Significance (Enter categories from instructions)

Military

Transportation

Period of Significance

c.1942-c.1958

Significant Dates

c.1942-c.1958

Significant Person (Complete if Criterion B is marked)**Cultural Affiliation** (Complete if Criterion D is marked)**Architect/Builder****Narrative Statement of Significance**

(Explain the significance of the property on one or more continuation sheets.)

9. Major Bibliographical References**Bibliography**

(Cite the books, articles, and other sources used in preparing this form on one or more continuation sheets.)

Previous documentation on file (NPS):

- ☐ preliminary determination of individual listing (36 CFR 67) has been requested
- ☐ previously listed in the National Register
- ☐ Previously determined eligible by the National Register
- ☐ designated a National Historic Landmark
- ☐ recorded by Historic American Buildings Survey # _____
- ☐ recorded by Historic American Engineering Record # _____

Primary location of additional data:

- ☒ State Historic Preservation Office
- ☐ Other State Agency
- ☐ Federal Agency
- ☐ Local Government
- ☐ University
- ☐ Other

Name of repository: _____

United States Department of the Interior
National Park Service

National Register of Historic Places Continuation Sheet

Section number 8 Page 1

SUMMARY

Located to the southeast of Newport, the Erwin Auxiliary Army Airfield is an asphalt airfield that was built c.1942 as a satellite field for the Newport Army Airfield. Consisting of two runways and two taxiways, the Erwin Airfield was important to the World War II efforts in Arkansas, notably in training pilots for the war, and it is also important in illustrating the development of aviation facilities around Arkansas during World War II. As a result, the Erwin Auxiliary Army Airfield is being nominated to the National Register of Historic Places with **local significance** under **Criterion A** for its associations with Arkansas's military and aviation history. The Erwin Auxiliary Army Airfield is being submitted to the National Register of Historic Places under the multiple property listing "We've Gotta Get Tough: History of WWII Home front Efforts in Arkansas, 1941-1946."

ELABORATION

Little is known about the early settlement of Jackson County other than the first settlers arrived in the area prior to 1830. The population was sizable enough that Jackson County was created on November 5, 1829, by the territorial legislature. Originally, Jackson County also included almost all of Woodruff County as well until it was separated in 1862. The original county seat was established at Litchfield in 1832, but in 1839 it was moved to Elizabeth. In 1852 it was moved to Augusta and then on to Jacksonport in 1853.¹ The county seat was moved to Newport, its current location, in 1891-1892.

Newport remained a small village until the St. Louis, Iron Mountain, & Southern Railway completed its line through the area. Once the railroad was finished, Newport quickly became a thriving community. By 1889, when the *Biographical and Historical Memoirs of Northeast Arkansas* was published, Newport boasted "two banks, eight general stores, ten family grocery stores, five drug stores, two hardware stores, an undertaking store, a harness store, a merchant tailor store, a music store, two jewelry stores, two book and stationery stores, a photograph gallery, ...a telephone system, ... [and] two weekly newspapers, both Democratic in politics." It was also considered to be "a flourishing town, very advantageously located for manufacturing purposes..."² Of course, becoming the county seat in the 1890s, further cemented Newport's place as the center of Jackson County affairs.

As the twentieth century came to Jackson County, the flat land around the area, which had been perfectly suited for farming, also was found to be useful for other pursuits, specifically aviation. Although the Wright Brothers took their historic first flight in North Carolina in 1903, it appears that there was little if any activity surrounding aviation in Arkansas before the mid-1910s. Many of the early efforts were related to the military, although a few private citizens were prominent in Arkansas's early aviation history. Two of the earliest aviation facilities in the state were Eberts Training Field, established in Lonoke in 1917 for the

¹ *Biographical and Historical Memoirs of Northeast Arkansas*. Chicago: Goodspeed Publishing Co., 1889, p. 832.

² *Ibid*, p. 839.

United States Department of the Interior
National Park Service

National Register of Historic Places Continuation Sheet

Section number 8 Page 2

purpose of training cadets for World War I, and the Little Rock Aviation Supply Depot established in 1918 as a distribution point for raw materials needed for air services and finished products and parts needed by airfields. However, when World War I ended in 1918, both facilities were no longer needed. Eberts Field closed in 1918 and the Little Rock Aviation Supply Depot closed in the early 1920s.³

Even though it was the military that took the lead in many early aviation efforts in Arkansas, there were also private citizens involved in the newfangled technology. For example, Professor J. S. Zerbe, who arrived in Fayetteville in 1918, had been involved in the development of aircraft since at least 1910 when he participated in the Dominguez Air Meet in California. He brought an experimental airplane, and an account of its performance stated that "Professor J. S. Zerbe brought out his curious appearing multiplane and attempted to take off. As it clattered down the field amid the cheers of the crowd, a front wheel hit a hole and collapsed throwing the machine to one side and damaging a wing..." Zerbe later tried his plane again, this time at the Washington County Fairgrounds, after he arrived in Fayetteville. Pilot Tom Flannerty flew the plane for approximately 1,000 feet, the plane's only known flight.⁴

However, Arkansas's most prominent aviator was Louise McPhetridge Thaden, who was born in Bentonville in 1905. She was introduced to aviation after traveling to Wichita and spending a lot of time around the local Travel Air airplane factory, where she met the company's owner, Walter Beech. Beech was impressed with her desire to fly and gave her a job at his dealership in Oakland, California. As part of her salary, she received free pilot's lessons and received her pilot's certificate in 1928. Among her many accomplishments as an aviatrix were the holding of the altitude, solo endurance, and speed records simultaneously, and the founding of the Ninety-Nines in 1929, an international organization for female pilots that she founded with Amelia Earhart, among others. By the time she retired from aviation competition in 1938, she was one of the most prominent aviatrixes in the country.⁵

The prominent aviation history that the state had during the early part of the twentieth century, and the role that aviation played in Arkansas during World War I, meant that when World War II began in the early 1940s, Arkansas was poised to play a role again. Eastern Arkansas, with its miles of flat land, which in *The WPA Guide to 1930s Arkansas* was described as "...a tablelike surface...broken only by a long, narrow strip

³ Bransford, Johnnie Carolyn. "Eberts Training Field" from *The Encyclopedia of Arkansas History & Culture* found at: <http://www.encyclopediaofarkansas.net/encyclopedia/entry-detail.aspx?search=1&entryID=1184> and McAlexander, William E., Jr., "Little Rock Aviation Supply Depot" from *The Encyclopedia of Arkansas History & Culture* found at: <http://www.encyclopediaofarkansas.net/encyclopedia/entry-detail.aspx?search=1&entryID=4234>.

⁴ Sawyer, Nathania. "Zerbe Air Sedan" from *The Encyclopedia of Arkansas History & Culture* found at: <http://www.encyclopediaofarkansas.net/encyclopedia/entry-detail.aspx?search=1&entryID=3671>.

⁵ Seibert, Rob. "Louise McPhetridge Thaden (1905-1979)" from *The Encyclopedia of Arkansas History & Culture* found at: <http://www.encyclopediaofarkansas.net/encyclopedia/entry-detail.aspx?search=1&entryID=30>.

United States Department of the Interior
National Park Service

National Register of Historic Places Continuation Sheet

Section number 8 Page 3

of hills called Crowley's Ridge, which runs from the Missouri line some 150 miles to Helena," was ideal for developing airfields and other aviation facilities.⁶

The geography of eastern Arkansas did not go unnoticed when the U.S. military began looking for places to place Army Air Force training schools. An article in the May 9, 1942, *Arkansas Gazette* reported:

Location of an army aviation training school to give basic training to 700 students and to be located about six miles northeast of Newport was announced in Washington today by Congressman Wilbur D. Mills. Six weeks ago a group of engineers and army officers made an inspection of the proposed site spotted by the United States Engineers Office in Little Rock two months before.

At a mass meeting held here recently, it was agreed rents would be frozen, recreational facilities would be provided, a right of way for the spur railroad track to the field secured and the highway leading from U.S. Highway 67 to the site paved. It also was agreed the students and soldiers at the camp would be given free access to the golf course, the swimming pool and tennis courts in the park. That no tuition would be charged for children of those brought here by the government as result of the project.

A pledge was made that a housing campaign would be started as soon as the project had been officially announced and the area placed in a national defense area to allow building.

Col. J.R. Crume, executive officer of the United States engineers office in Little Rock, announced today that Maj. John C. Pritchard will be in charge of the project here. Colonel Crume secured quarters here Monday. Work will begin within two weeks.

In addition to the air training school, several auxiliary flying fields will be located within a radius of 20 miles to be used for training purposes. Each of the auxiliary fields will require 640 acres while the main field will exceed 2,500 acres. The site of the main field lies between state highways 14 and 16.⁷

⁶ West, Elliott. *The WPA Guide to 1930s Arkansas*. Lawrence, KS: University Press of Kansas, 1987 reprint of 1941 publication, p. 6.

⁷ "Army Air School for Newport." *Arkansas Gazette*. 9 May 1942, p. 11.

United States Department of the Interior
National Park Service

National Register of Historic Places Continuation Sheet

Section number 8 Page 4

Once the site was chosen for the school, no time was wasted in constructing the facility. On November 4, 1942, the *Arkansas Gazette* reported that "The Newport airfield became the Tuckerman Army Air Forces Basic Flying School today on orders of the War Department as the officer in charge, Col. Daniel A. Cooper, activated the post, which, before this time, has been merely a project with the United States Engineers Office in charge." The paper further reported that "...although the cantonment is not completed, many of the buildings are in use."⁸ (Although there was disappointment that the school originally referred to Tuckerman, the name was changed to Newport by the end of 1942.⁹)

The Erwin Auxiliary Airfield was one of several satellite airfields that were built to be utilized by the Newport Army Airfield and its pilot training programs. Although the exact date of the field's construction is unknown, it is known that it was built sometime between 1937 and 1944, likely c.1942 when the Newport facility was built. The Airport Directory Company's *1937 Airports Directory* did not list the Erwin Airfield, but it was referenced in the *1944 US Army/Navy Directory of Airfields*, which noted that it was "Aux to Newport AAF." The directory also noted that the field had a 4,500-foot long hard-surfaced runway.¹⁰

At least one other airfield, the Milltown Auxiliary Army Airfield, located east of Tuckerman, was built to serve the Newport Army Airfield. Like the Erwin Airfield, the Milltown Airfield consisted of two runways and two taxiways, oriented northeast-southwest and northwest-southeast. Also like the Erwin Airfield, Milltown's runways were described as being 4,500 feet long and hard-surfaced. Unfortunately, this airfield has virtually disappeared.¹¹

Although the Erwin Airfield was apparently mainly used for military training and exercises, especially practice landings in B25 bombers, it also was apparently open to civilians. The October 1945 Little Rock Sectional Chart depicted the field as an auxiliary airfield, and did not indicate any type of military use. (It is possible that once the War ended in 1945, the Army no longer used the field, therefore opening it up to civilian use.)¹²

Even though the Army apparently stopped using the Erwin Airfield in 1945, the Air Force apparently reactivated the field sometime between 1946 and 1949. The exact use of the field by the Air Force is unknown, as is exactly how long they used the field. Sometime between 1956 and 1964, the Erwin Airfield was abandoned, since it was labeled as "Abandoned airport" on the July 1964 Little Rock Sectional Chart.¹³

⁸ "Tuckerman New Name of Flying School." *Arkansas Gazette*. 4 November 1942, p. 2.

⁹ "Air School's Name Now Newport" *Arkansas Gazette*. 30 December 1942, p. 2.

¹⁰ Information on Erwin Auxiliary Army Airfield found at: http://www.airfields-freeman.com/AR/Airfields_AR_SE.html.

¹¹ Information on Milltown Auxiliary Army Airfield found at: http://www.airfields-freeman.com/AR/Airfields_AR_SE.html.

¹² *Ibid.*

¹³ *Ibid.*

United States Department of the Interior
National Park Service

National Register of Historic Places Continuation Sheet

Section number 8 Page 5

After the Erwin Auxiliary Army Airfield was abandoned, the land was used by the University of Arkansas as an agriculture experiment station. Currently, the land that houses the airfield is leased to a local farmer for cattle grazing, and a few small agricultural buildings have been built to support the agricultural use. Although the field has been abandoned for approximately 45 years, the asphalt of the runways and taxiways has remained in surprisingly good condition.

The Erwin Auxiliary Army Airfield remains an interesting relic of Arkansas's support of World War II on the homefront. Serving as an airfield used for training exercises, the facility played an important role in training pilots for the front lines in Europe and Asia during the War. Today, the field is mainly forgotten, but still an important reminder of Arkansas's role in World War II.

STATEMENT OF SIGNIFICANCE

Located to the southeast of Newport, the Erwin Auxiliary Army Airfield is an asphalt airfield that was built c.1942 as a satellite field for the Newport Army Airfield. Consisting of two runways and two taxiways, the Erwin Airfield was important to the World War II efforts in Arkansas, notably in training pilots for the war, and it is also important in illustrating the development of aviation facilities around Arkansas during World War II. As a result, the Erwin Auxiliary Army Airfield is being nominated to the National Register of Historic Places with **local significance** under **Criterion A** for its associations with Arkansas's military and aviation history. The Erwin Auxiliary Army Airfield is being submitted to the National Register of Historic Places under the multiple property listing "We've Gotta Get Tough: History of WWII Home front Efforts in Arkansas, 1941-1946."

United States Department of the Interior
National Park Service

National Register of Historic Places Continuation Sheet

Section number 9 Page 1

BIBLIOGRAPHY

"Air School's Name Now Newport" *Arkansas Gazette*. 30 December 1942.

"Army Air School for Newport." *Arkansas Gazette*. 9 May 1942.

Biographical and Historical Memoirs of Northeast Arkansas. Chicago: Goodspeed Publishing Co., 1889.

Bransford, Johnnie Carolyn. "Eberts Training Field" from *The Encyclopedia of Arkansas History & Culture* found at: <http://www.encyclopediaofarkansas.net/encyclopedia/entry-detail.aspx?search=1&entryID=1184>.

Information on Erwin Auxiliary Army Airfield found at: http://www.airfields-freeman.com/AR/Airfields_AR_SE.html.

Information on Milltown Auxiliary Army Airfield found at: http://www.airfields-freeman.com/AR/Airfields_AR_SE.html.

McAlexander, William E., Jr., "Little Rock Aviation Supply Depot" from *The Encyclopedia of Arkansas History & Culture* found at: <http://www.encyclopediaofarkansas.net/encyclopedia/entry-detail.aspx?search=1&entryID=4234>.

Sawyer, Nathania. "Zerbe Air Sedan" from *The Encyclopedia of Arkansas History & Culture* found at: <http://www.encyclopediaofarkansas.net/encyclopedia/entry-detail.aspx?search=1&entryID=3671>.

Seibert, Rob. "Louise McPhetridge Thaden (1905-1979)" from *The Encyclopedia of Arkansas History & Culture* found at: <http://www.encyclopediaofarkansas.net/encyclopedia/entry-detail.aspx?search=1&entryID=30>.

"Tuckerman New Name of Flying School." *Arkansas Gazette*. 4 November 1942.

West, Elliott. *The WPA Guide to 1930s Arkansas*. Lawrence, KS: University Press of Kansas, 1987 reprint of 1941 publication.

Erwin Auxiliary Army Airfield
Name of Property

Jackson County, Arkansas
County and State

10. Geographical Data

Acreage of Property Approximately 430 acres.

UTM References

(Place additional UTM references on a continuation sheet.)

1	15	657781	3938577
	Zone	Easting	Northing
2	15	658839	3938617

3	15	658873	3937084
	Zone	Easting	Northing
4	15	657861	3937057

☒ See continuation sheet

Verbal Boundary Description

(Describe the boundaries of the property on a continuation sheet.)

Boundary Justification

(Explain why the boundaries were selected on a continuation sheet.)

11. Form Prepared By

name/title	Ralph S. Wilcox, National Register & Survey Coordinator		
organization	Arkansas Historic Preservation Program	date	July 19, 2007
street & number	1500 Tower Building, 323 Center Street	telephone	(501) 324-9787
city or town	Little Rock	state	AR zip code 72201

Additional Documentation

Submit the following items with the completed form:

Continuation Sheets

Maps

A **USGS map** (7.5 or 15 minute series) indicating the property's location

A **Sketch map** for historic districts and properties having large acreage or numerous resources.

Photographs

Representative **black and white photographs** of the property.

Additional items

(Check with the SHPO or FPO for any additional items.)

Property Owner

(Complete this item at the request of SHPO or FPO.)

name			
street & number		telephone	
city or town		state	zip code

Paperwork Reduction Act Statement: This information is being collected for applications to the National Register of Historic Places to nominate properties for listing or determine eligibility for listing, to list properties, and to amend existing listing. Response to this request is required to obtain a benefit in accordance with the National Historic Preservation Act, as amended (16 U.S.C. 470 *et seq.*)

Estimated Burden Statement: Public reporting burden for this form is estimated to average 18.1 hours per response including time for reviewing instructions, gathering and maintaining data, and completing and reviewing the form. Direct comments regarding this burden estimate or any aspect of this form to the Chief, Administrative Services Division, National Park Service, P. O. Box 37127, Washington, DC 20013-7127; and the Office of Management and Budget, Paperwork Reduction Projects (1024-0018), Washington, DC 20303.

United States Department of the Interior
National Park Service

National Register of Historic Places Continuation Sheet

Section number 10 Page 1

ADDITIONAL UTM's

- 5) 15 657690E 3937201N
- 6) 15 657685E 3937535N
- 7) 15 657912E 3937820N
- 8) 15 657644E 3938166N

VERBAL BOUNDARY DESCRIPTION

From the northeast corner of the intersection of Jackson Road 917 and the drainage ditch just to the north of AR 14, proceed northwesterly along the northeast side of Jackson Road 917 for 945 feet to the treeline, thence proceed northerly along the treeline for 1,150 feet, thence proceed northeasterly parallel to the northeast-southwest taxiway for 1,315 feet, thence proceed northwesterly parallel to the northwest-southeast taxiway for 1,270 feet to the eastern edge of U.S. 67, thence proceed northeasterly along the eastern edge of U.S. 67 for 1,805 feet to the drainage ditch, thence proceed easterly along the south side of the drainage ditch for 3,360 feet to the farm road/fence line, thence proceed southerly along the farm road/fence line for 5,250 feet to the drainage ditch, thence proceed westerly along the north side of the drainage ditch for 3,570 feet to the point of beginning.

BOUNDARY JUSTIFICATION

This boundary contains all of the land historically associated with the Erwin Auxiliary Army Airfield that retains integrity.

United States Department of the Interior
National Park Service

National Register of Historic Places Continuation Sheet

Name of Property _____

County and State _____

Section number _____ Page _____

Name of multiple property listing (if applicable) _____

SUPPLEMENTARY LISTING RECORD

NRIS Reference Number: 08000954

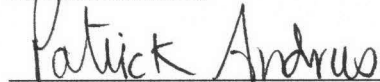
Date Listed: 10/2/08

Property Name: Erwin Auxiliary Airfield (WWII Home Front Efforts in Arkansas MPS)

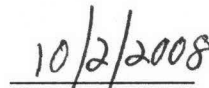
County: Jackson

State: AR

This property is listed in the National Register of Historic Places in accordance with the attached nomination documentation subject to the following exceptions, exclusions, or amendments, notwithstanding the National Park Service certification included in the nomination documentation.



Signature of the Keeper



Date of Action

=====

Amended Items in Nomination:

The Period of Significance is hereby changed to c. 1942-1945.

This coincides with its use as a training airfield for World War II aircrews and reflects the period of significance of the Multiple Property Cover Document.

The Arkansas State Historic Preservation Office was notified of this amendment.

DISTRIBUTION:

National Register property file

Nominating Authority (without nomination attachment)

UNITED STATES DEPARTMENT OF THE INTERIOR
NATIONAL PARK SERVICE

NATIONAL REGISTER OF HISTORIC PLACES
EVALUATION/RETURN SHEET

REQUESTED ACTION: NOMINATION

PROPERTY Erwin Auxiliary Army Airfield
NAME:

MULTIPLE World War II Home Front Efforts in Arkansas
NAME:

STATE & COUNTY: ARKANSAS, Jackson

DATE RECEIVED: 8/20/08 DATE OF PENDING LIST: 9/08/08
DATE OF 16TH DAY: 9/23/08 DATE OF 45TH DAY: 10/03/08
DATE OF WEEKLY LIST:

REFERENCE NUMBER: 08000954

REASONS FOR REVIEW:

APPEAL: N DATA PROBLEM: N LANDSCAPE: N LESS THAN 50 YEARS: N
OTHER: N PDIL: N PERIOD: N PROGRAM UNAPPROVED: N
REQUEST: Y SAMPLE: N SLR DRAFT: Y NATIONAL: N

COMMENT WAIVER: N

X ACCEPT RETURN REJECT 10/2/08 DATE

ABSTRACT/SUMMARY COMMENTS:

Significant under Criterion A, the Erwin Aux. Airfield is ~~not~~ significant
for its role in Basic pilot training for the US Army Air forces during
WW II. This aux. airfield is the only intact field associated ~~with~~
with the main Newport Air Corps field.

RECOM./CRITERIA Accept Crit A

REVIEWER J. Gubby

DISCIPLINE Hishu

TELEPHONE

DATE 10/2/08

DOCUMENTATION see attached comments Y/N see attached SLR (Y)N

If a nomination is returned to the nominating authority, the
nomination is no longer under consideration by the NPS.



ERWIN AUXILIARY ARMY AIRFIELD

JACKSON COUNTY, AR

RALPH S. WILCOX

FEBRUARY 2007

ARKANSAS HISTORIC PRESERVATION PROGRAM, LITTLE ROCK, AR
VIEW NORTHEAST FROM PHOTO LOCATION #1.



ERWIN AUXILIARY ARMY AIRFIELD

JACKSON COUNTY, ARKANSAS

RALPH S. WILCOX

FEBRUARY 2007

ARKANSAS HISTORIC PRESERVATION PROGRAM, LITTLE ROCK, AR
VIEW SOUTHWEST FROM LOCATION #2



ERWIN AUXILIARY ARMY AIRFIELD

JACKSON COUNTY, ARKANSAS

RALPH S. WILCOX

FEBRUARY 2007

ARKANSAS HISTORIC PRESERVATION PROGRAM, LITTLE ROCK, AR
VIEW NORTHEAST FROM PHOTO LOCATION #2



ERWIN AUXILIARY ARMY AIRFIELD

JACKSON COUNTY, ARKANSAS

RALPH S. WILCOX

FEBRUARY 2007

ARKANSAS HISTORIC PRESERVATION PROGRAM, LITTLE ROCK, AR
VIEW SOUTHWEST FROM PHOTO LOCATION #3



ERWIN AUXILIARY ARMY AIRFIELD

JACKSON COUNTY, ARKANSAS

RALPH S. WILCOX

FEBRUARY 2007

ARKANSAS HISTORIC PRESERVATION PROGRAM, LITTLE ROCK, AR
VIEW SOUTHEAST FROM PHOTO LOCATION #4



ERWIN AUXILIARY ARMY AIRFIELD

JACKSON COUNTY, ARKANSAS

RALPH S. WILCOX

FEBRUARY 2007

ARKANSAS HISTORIC PRESERVATION PROGRAM, LITTLE ROCK, AR

VIEW NORTHEAST FROM PHOTO LOCATION #5



ERWIN AUXILIARY ARMY AIRFIELD

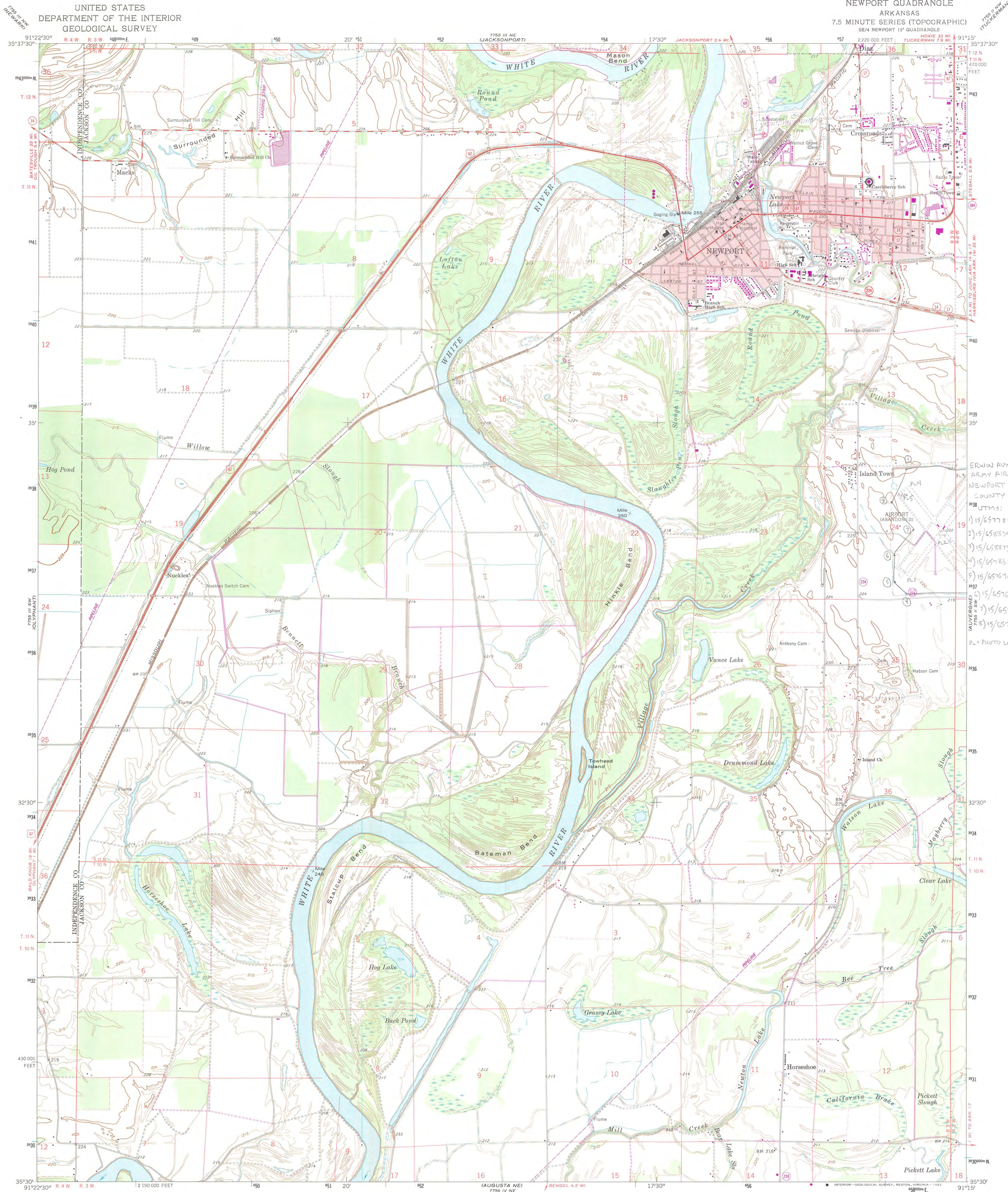
JACKSON COUNTY, ARKANSAS

RALPH S. WILCOX

FEBRUARY 2007

ARKANSAS HISTORIC PRESERVATION PROGRAM, LITTLE ROCK, AR

VIEW NORTHWEST FROM PHOTO LOCATION #6



UNITED STATES
DEPARTMENT OF THE INTERIOR
GEOLOGICAL SURVEY

NEWPORT QUADRANGLE
ARKANSAS
7.5 MINUTE SERIES (TOPOGRAPHIC)
SE/4 NEWPORT 15' QUADRANGLE

Maped, edited, and published by the Geological Survey
Control by USGS, USC&GS, and USCE
Planimetry by photogrammetric methods from aerial photographs
taken 1961. Topography by planetable surveys 1961-62
Polyconic projection. 1927 North American datum
10,000-foot grid based on Arkansas coordinate system, north zone
1000-metre Universal Transverse Mercator grid ticks,
zone 15, shown in blue
Red tint indicates areas in which only landmark buildings are shown
All wells shown are irrigation wells
Fine red dashed lines indicate selected fence and field lines where
generally visible on aerial photographs. This information is unchecked
To place on the predicted North American Datum 1983
move the projection lines 6 meters south and
12 meters east as shown by dashed corner ticks

UTM GRID AND 1981 MAGNETIC NORTH
DECLINATION AT CENTER OF SHEET

Revisions shown in purple compiled from aerial
photographs taken 1980. Map edited 1981
This information not field checked

THIS MAP COMPLIES WITH NATIONAL MAP ACCURACY STANDARDS
FOR SALE BY U.S. GEOLOGICAL SURVEY, DENVER, COLORADO 80225, OR RESTON, VIRGINIA 22092
AND ARKANSAS GEOLOGICAL COMMISSION, LITTLE ROCK, ARKANSAS 72204
A FOLDER DESCRIBING TOPOGRAPHIC MAPS AND SYMBOLS IS AVAILABLE ON REQUEST

ROAD CLASSIFICATION
Heavy-duty — Light-duty —
Medium-duty — Unimproved dirt —
U.S. Route — State Route —

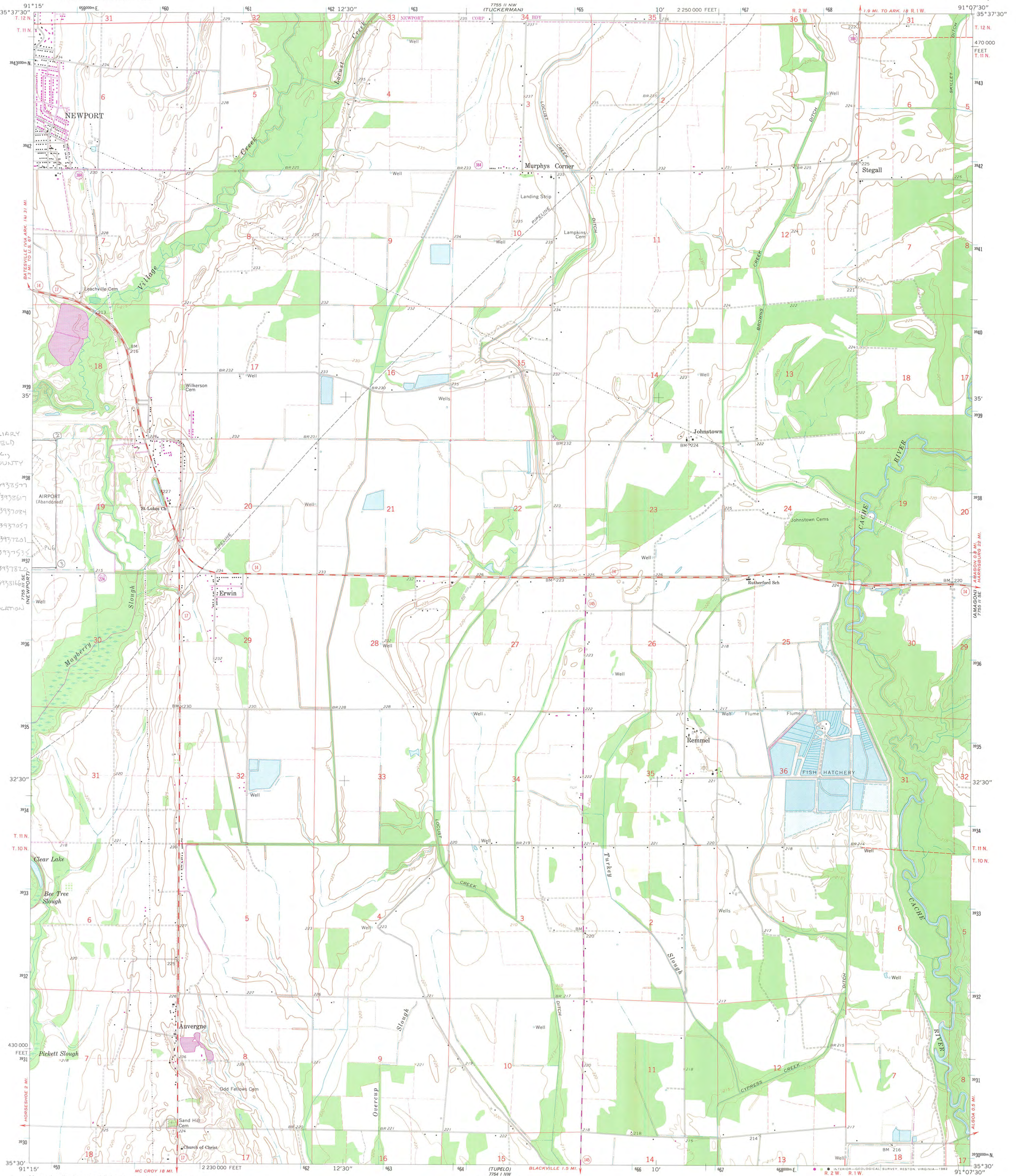
NEWPORT, ARK.
SE/4 NEWPORT 15' QUADRANGLE
N 3530-W 9115/7.5
1962
PHOTOREVISED 1981
DMA 7755 III SE—SERIES V884

QUADRANGLE LOCATION

UNITED STATES
DEPARTMENT OF THE INTERIOR
GEOLOGICAL SURVEY

AUVERGNE QUADRANGLE
ARKANSAS—JACKSON CO.
7.5 MINUTE SERIES (TOPOGRAPHIC)

ERWIN AUXILIARY
ARMY AIRFIELD
NEWPORT VIC.,
JACKSON COUNTY
UTMS:
1) 15/657731/393857
2) 15/657837/393861
3) 15/657873/3937024
4) 15/657861/3937057
5) 15/657690/3937201
6) 15/657685/3937535
7) 15/657912/3937820
8) 15/657644/3938166
PL = PHOTO LOCATION



Mapped, edited, and published by the Geological Survey

Control by USGS and USC&GS

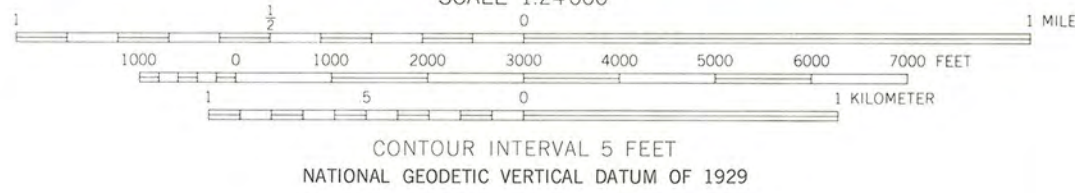
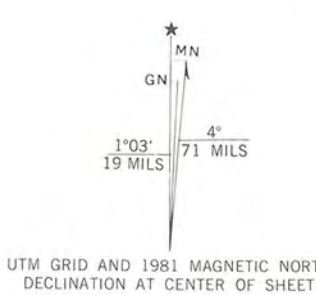
Planimetry by photogrammetric methods from aerial photographs taken 1964. Topography by planetable surveys 1965

Polyconic projection. 1927 North American datum
10,000-foot grid based on Arkansas coordinate system, north zone
1000-meter Universal Transverse Mercator grid ticks, zone 15, shown in blue

Fine red dashed lines indicate selected fence and field lines where generally visible on aerial photographs. This information is unchecked

To place on the predicted North American Datum 1983 move the projection lines 6 meters south and 11 meters east as shown by dashed corner ticks

Revisions shown in purple compiled from aerial photographs taken 1980. Map edited 1981. This information not field checked



THIS MAP COMPLIES WITH NATIONAL MAP ACCURACY STANDARDS
FOR SALE BY U. S. GEOLOGICAL SURVEY, DENVER, COLORADO 80225, OR RESTON, VIRGINIA 22092
AND ARKANSAS GEOLOGICAL COMMISSION, LITTLE ROCK, ARKANSAS 72204
A FOLDER DESCRIBING TOPOGRAPHIC MAPS AND SYMBOLS IS AVAILABLE ON REQUEST



QUADRANGLE LOCATION



AUVERGNE, ARK.

N3530—W9107.5/7.5

1965
PHOTOREVISED 1981
DMA 7755 II SW—SERIES V884



The Department of Arkansas Heritage

Mike Beebe
Governor

Cathie Matthews
Director

Arkansas Arts Council

*

Arkansas Natural Heritage
Commission

*

Delta Cultural Center

*

Historic Arkansas Museum

*

Mosaic Templars
Cultural Center

*

Old State House Museum



Arkansas Historic Preservation Program

1500 Tower Building
323 Center Street
Little Rock, AR 72201
(501) 324-9880
fax: (501) 324-9184
tdd: (501) 324-9811

e-mail:

info@arkansaspreservation.org

website:

www.arkansaspreservation.com

An Equal Opportunity Employer



August 6, 2008

Dr. Janet Matthews
Chief of Registration
United States Department of the Interior
National Register of Historic Places
National Park Service
8th Floor
1201 Eye Street, NW
Washington, DC 20005

RE: Erwin Auxiliary Army Airfield – Newport vic., Jackson
County, Arkansas

Dear Dr. Matthews:

We are enclosing for your review the above-referenced nomination. The Arkansas Historic Preservation Program has complied with all applicable nominating procedures and notification requirements in the nomination process.

If you need further information, please call Ralph S. Wilcox of my staff at (501) 324-9787. Thank you for your cooperation in this matter.

Sincerely,

Cathie Matthews
State Historic Preservation Officer

CM:rsw

Enclosure