



3-998

Guntner's Brewing Company
Baltimore City, Maryland

Julie Darsie for Betty Bird and Associates

January 2002

MD SHPO

View northwest toward 1900 Brewhouse (left) and Boiler

Room (right). East elevations of 1936

Brewhouse and 1950 Brewhouse are visible above.

1 of 35

890d 993101 1+ 2205
5027 + 1 101365 P068



HORSE RADISH
HORSE RADISH

LEASE

2-498

Gunther's Brewing Company
Baltimore City, Maryland

Julie Parsie for Betty Bird and Associates
January 2002

MD 2HPO

View northeast toward 1900 Brewhouse, showing bridges
to 1955 Warehouse and Shipping and Bottling Building

2 of 35



B-998

Gunther Brewing Company

Baltimore City, Maryland

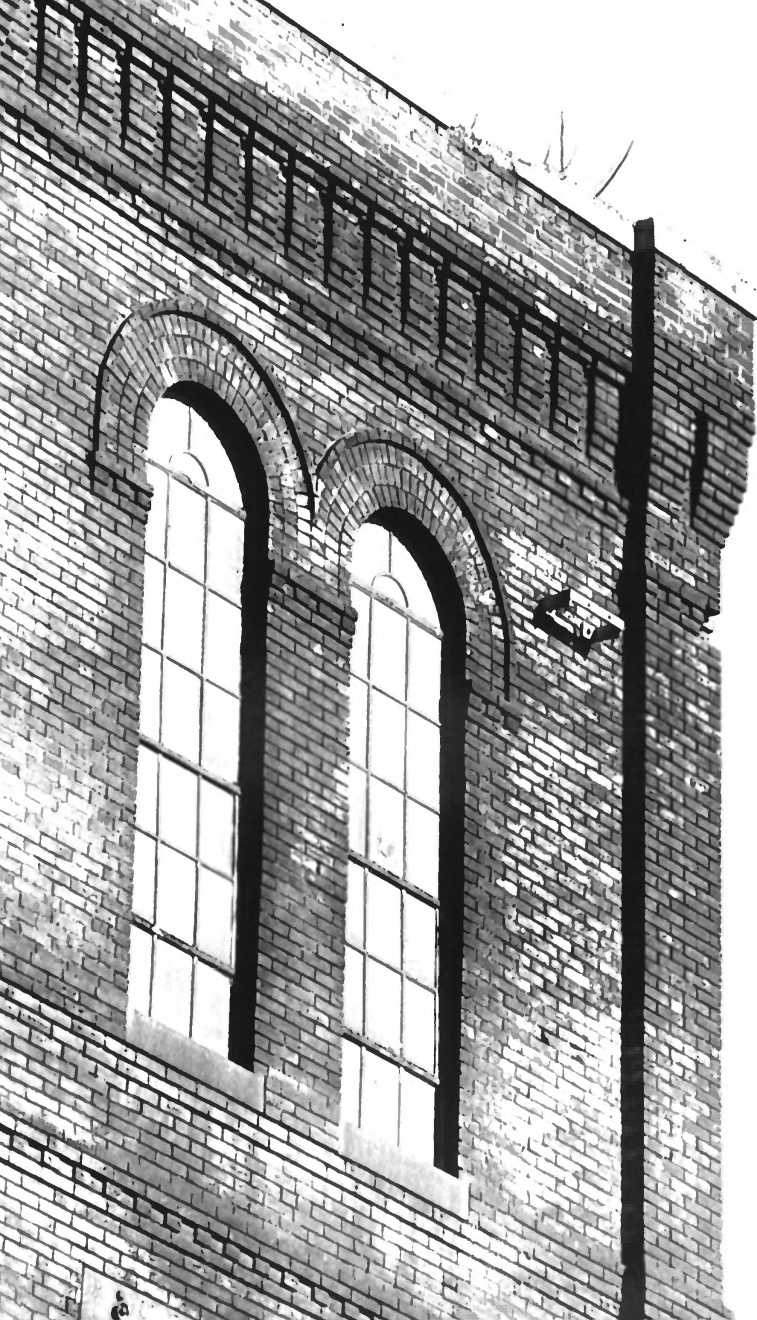
Julie Darsie for Betty Bird & Associates

January 2002

MD SITPO

South elevation, 1900 Brewhouse

3 of 35



B-998

Grunther Brewing Company

Baltimore City, Maryland

Julie Darsie for Betty Bird & Associates

January 2002

MD SHPO

Detail of bay on south elevation, 1900 Brewhouse

4 of 35.



B-998

Gunther Brewing Company

Baltimore City, Maryland

Julie Darsie for Betty Bird & Associates

January 2002

MD SHPO

Detail of bay on east elevation, 1900 Brewhouse

5 of 35



B-998

Gunther Brewing Company

Baltimore City, Maryland

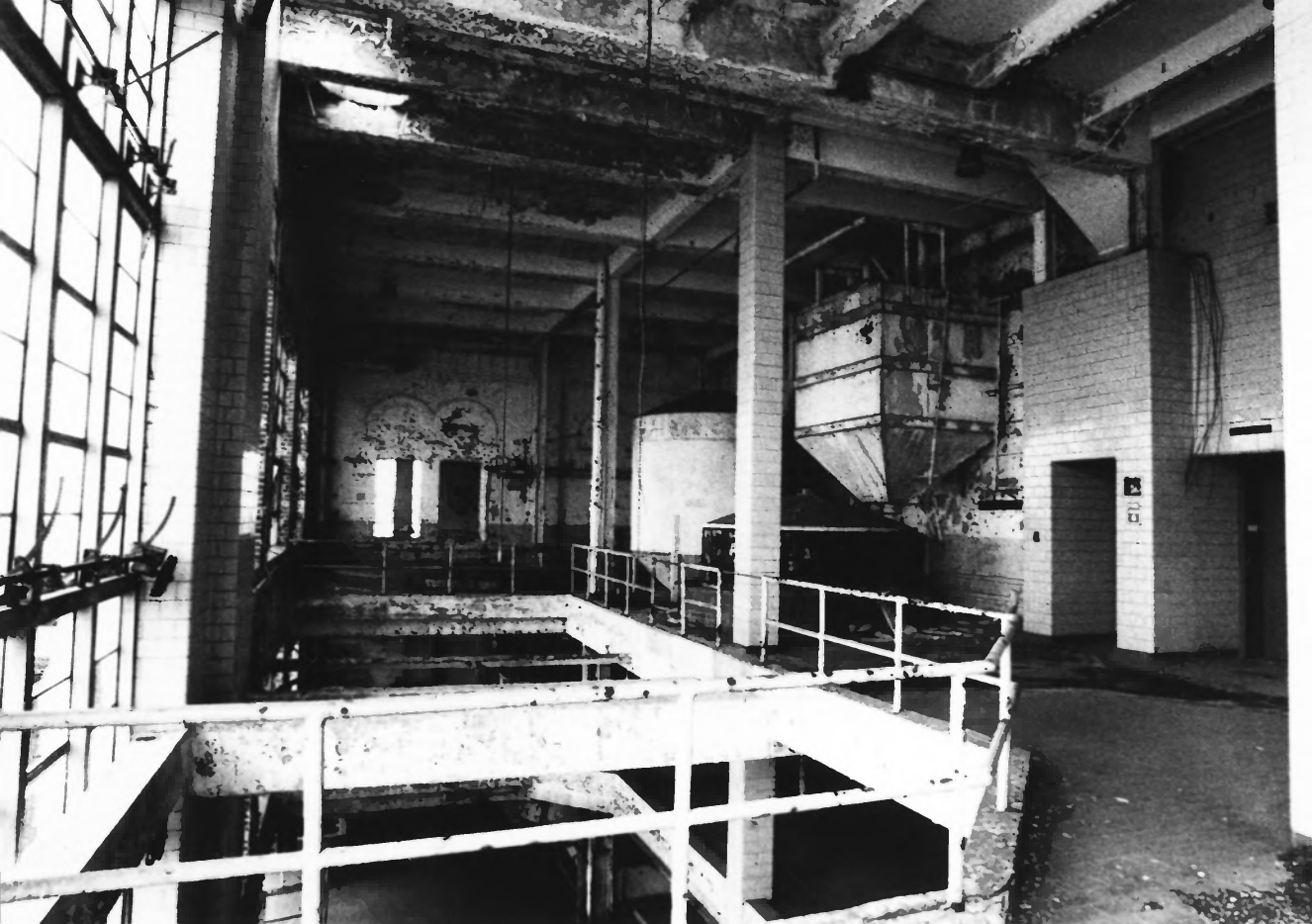
Julie Darsie for Betty Bird & Associates

January 2002

MD SHPO

4th floor, SE corner, 1900 Brewhouse

6 of 35



B-998

Gunther Brewing Company

Baltimore City, Maryland

Julie Darsie for Betty Bird & Associates

January 2002

MD SHPO

View south through 3rd floor interiors of 1950 Brewhouse,
1936 Brewhouse. North wall of 1900 Brewhouse in background.

7 of 35



B-998

Gunther Brewing Company

Baltimore City, Maryland

Julie Darsie for Betty Bird & Associates

January 2002

MD SHPO

View northeast toward Boiler Room; note connecting bridge
from Shipping/ Bottling Building and stack
in background.

8 of 35

5027 + 4 100127 P033



B-998

Gunther Brewing Company

Baltimore City, Maryland

Julie Darsie for Betty Bird & Associates

January 2002

MD SHPO

South elevation, Boiler Room

9 of 35



P-998

GUTHRIE'S Brewing Company
Baltimore City, Maryland

Julie Darsie for Betty Bird and Associates

January, 2002

MD STPO

East elevation, Boiler Room. East elevations of 1900 Brewhouse,
1936 Brewhouse, and 1950 Brewhouse are visible above.

10 of 35



IGNORANCE
76148652

B-998

Guthrie's Brewing Company
Baltimore City, Maryland

Julie Darsie for Betty Bird and Associates

January 2002

MD SMP0

View southwest toward Stable/Ice Plant. 1900, 1936, and
1950 Brewhouses in background.

11 of 35



B-998

Gunther's Brewing Company

Baltimore City, Maryland

Julie Darsie for Betty Bird and Associates

January 2002

MD SHPO

Ruins of Stables/Ice Plant from east. East elevation of
1950 Brewhouse in background.

12 of 35



B-998

Gunther's Brewing Company
Baltimore City, Maryland

Julie Davis for Betty Bird and Associates

January 2002

MD SHPO

West wall, Stables/ Ice Plant

13 of 35



B-998

Gunther's Brewing Company

Baltimore City, Maryland

Julie Darsie, Betty Bird and Associates

January, 2002

MD SHPO

Ca. 1955 west elevation, Old Office

14 of 38



B-999

Gunther's Brewing Company

Baltimore City, Maryland

Julie Darsie for Betty Pird and Associates

View NE toward old office, showing juncture of ca. 1955
west elevation with older south elevation.

15 of 35



B-998

Gunther's Brewing Company

Baltimore City, Maryland

Jillie Parsie, for Betty Bird and Associates

January 2002

MD SHPO

South and east elevations, Old Office

16 of 35



B-998

Gunther's Brewing Company
Baltimore City, Maryland

Site Survey for Petty Bird + Associates

January, 2002

MD SHPO

View southeast toward Wash House (left), 1900 Brewhouse
(right), and 1950 Brewhouse (background).

17 of 35



3-998

Gunther's Brewing Company

Baltimore City, Maryland

Julie Darsie for Betty Bird & Associates

January 2002

MS 5430

View southeast toward Shipping and Bottling
Building, showing bridges to 1900 Brewhouse

18 of 35



HA J-824

3-998

Gunther's Brewing Company
Baltimore City, Maryland

Julie Darsie for Betty Bird and Associates

January 2002

MD SHPO

West elevation, Racking/Wash Room

19 of 35



NO PARKING

NO PARKING

NO PARKING

8-096

Gunther's Brewing Company
Baltimore City, Maryland

Julie Dawsie for Betty Bird and Associates

January 2002

MD SHPO

North elevation, Racking and Wash Room. North elevations of
Blue and White Structure and 1949 Stockhouse
are visible above.

20 of 35



B-998

Gunther's Brewing Company
Baltimore City, Maryland

Julie Darsie for Betty Bird and Associates

January 2002

MD SHPO

View southwest toward Blue and White structure (left)
and Racking/Wash Room (right)

21 of 35



B-998

Gunther Brewing Company

Baltimore City, Maryland

Julie Darsie for Betty Bird & Associates

January 2002

MD SHPO

North elevation, White-Seidenman Warehouse

22 of 35



B-993

Gunther's Brewing Company

Baltimore City, Maryland

Julie Parke for: Betty Bird and Associates

January 2002

MD SHPO

Detail of brick work on north elevation, White-Seidenman

Warehouse.

23 of 35



B-998

Gunther Brewing Company

Baltimore City, Maryland

Julie Darsie for Betty Bird & Associates

January 2002

MD SHPO

Detail of multi-level brick cornices on north elevation, White-

24 of 35

Seidenman Warehouse



B-993

Guntner's Brewing Company
Baltimore City, Maryland

Julie Darsie for Betty Bird and Associates

January 2002
MD SHPO

South and east elevations, White Seidenham Warehouse

25 of 35



B-998

Gunther Brewing Company

Baltimore City, Maryland

Julie Darsie for Betty Bird & Associates

January 2002

MD SHPO

Interior of white - Seldenman Warehouse

26 of 35



B-998

Gunther's Brewing Company

Baltimore City, Maryland

Julie Darsie for Betty Bird and Associates

January 2002

M.D. 8HP6

West Elevation, 1949 Stock House

27 of 35



B-998

Gunther's Brewing Company
Baltimore City, Maryland

Julie Darsie for Betty Bird and Associates

January 2002

MD S400

Detail of stair tower overrun, 1949 Stock House

28 of 35



N

National Education Center

B-998

Gunther Brewing Company

Baltimore City, Maryland

Julie Darsie for Betty Bird & Associates

January 2002

MD SHPO

View SE toward 1955 Office. White-Seidenman Warehouse
on left.

29 of 35



B-998

Gunthers Brewing Company

Baltimore City, Maryland

Julie Darsie for Betty Bird & Associates

January 2002

MD SHPO

Lobby interior of 1955 office

30 of 35

BREWERSHILL.net
LEASE!
443-573-4000

BRICKWORKERS
LOCAL 10



B-908

GUNTHER'S BREWING COMPANY

Baltimore City, Maryland

Julie Darsie for Betty Bird + Associates

January 2002

MD SHPO

View Northeast toward 1955 office (left) and
White-Seidenman Warehouse (right)

31 of 35



T
TULKOFF'S
Horseradish
SINCE 1921

MANHOLE COVER

B-998

Gunther's Kiewit Company
Baltimore City, Maryland
Julie Darsie Betty Bird and Associates

January, 2002

MD SHPO

South and east elevations, 1955 Warehouse with bridge to

1900 Brewhouse

32 of 35



B-998

Gunther Brewing Company

Baltimore City, Maryland

Julie Darsie for Betty Bird & Associates

January 2002

MD SHPO

View NW toward Tulkoff Factory & Warehouse

33 of 35



B-998

Gunther's Brewing Company

Baltimore City, Maryland

Julie Darsie for Betty Bird & Associates

January 2002

MD SHPO

Industrial context: tank farm beyond Tulloff Factory
& Warehouse

34 of 35



BREWERS HILL.net
LEASE
443-579-6000

B-998

Gunther Brewing Company

Baltimore City, Maryland

Julie Darsie for Betty Bird & Associates

January 2002

MD SHPO

Neighborhood context: rowhouses on Elliott Street with
1955 Office and Racking / Wash Room
in background.

35 of 35