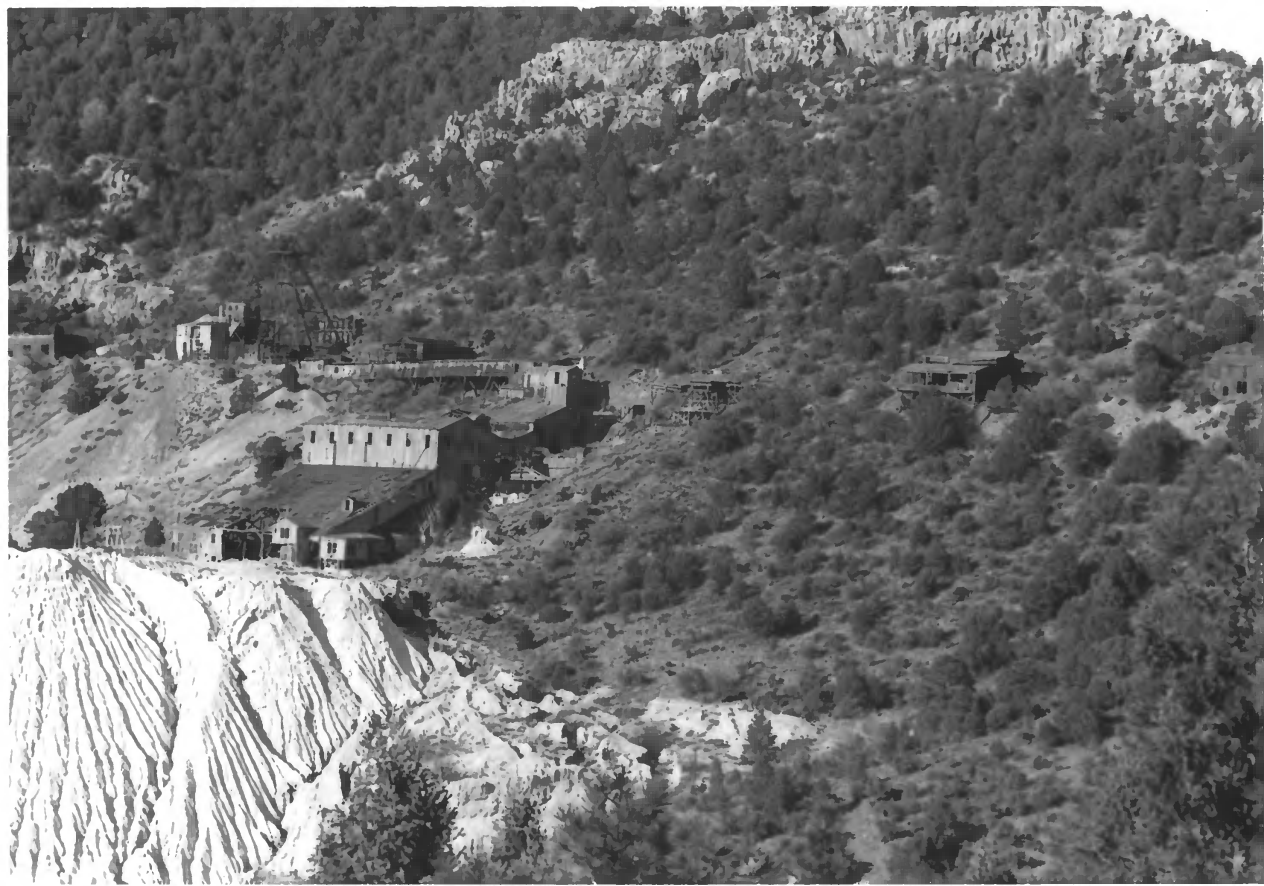




1: Socorro Mines Mill and
tailings pile (middle), power
plant (upper right); Fannie Hill
Historic District, Catron County,
New Mexico; Chris Wilson; March,
1987; NM Historic Preservation
Division; looking northeast.



2: Socorro Mines Mill with headframe (upper left); Fannie Hill Historic District, Catron County, New Mexico; Chris Wilson; March, 1987; NM Historic Preservation Division; looking north.



3: Headframe with attached ore bins; survey # 93; Fannie Hill Historic District, Catron County, New Mexico; Chris Wilson; March, 1987; NM Historic Preservation Division; looking northwest; contributing structure.



4: Socorro Mines Mill with
water tank and conveyor housing;
survey # 90; Fannie Hill Historic
District, Catron County, New
Mexico; Chris Wilson; March,
1987; NM Historic Preservation
Division; looking west;
contributing building.



5: Socorro Mines Mill; survey
90; Fannie Hill Historic
District, Catron County, New
Mexico; Chris Wilson; March,
1987; NM Historic Preservation
Division; looking southwest;
contributing building.



6: Socorro Mines Mill; survey
90; Fannie Hill Historic
District, Catron County, New
Mexico; Chris Wilson; March,
1987; NM Historic Preservation
Division; looking north;
contributing building.



87001567

7: Tube mill in Socorro Mines
Mill; Fannie Hill Historic
District, Catron County, New
Mexico; Chris Wilson; March,
1987; NM Historic Preservation
Division.

Socorro Mines Mintz Company Mill, Fannie Hill



8: Pachuca tanks in Socorro
Mines Mill; Fannie Hill Historic
District, Catron County, New
Mexico; Chris Wilson; March,
1987; NM Historic Preservation
Division.



9: Harvey-Steele tilt furnaces
in Socorro Mines Mill; Fannie
Hill Historic District, Catron
County, New Mexico; Chris Wilson;
March, 1987; NM Historic
Preservation Division.



10: American or Dorrco filter
(left), Burt pressure filter ?
(right) in Socorro Mines Mill;
Fannie Hill Historic District,
Catron County, New Mexico; Chris
Wilson; March, 1987; NM Historic
Preservation Division.



11: Blacksmiths shop; survey #
95; Fannie Hill Historic
District, Catron County, New
Mexico; Chris Wilson; March,
1987; NM Historic Preservation
Division; looking northwest;
contributing building.



12: Interior of power house;
survey #55; Fannie Hill Historic
District, Catron County, New
Mexico; Chris Wilson; March,
1987; NM Historic Preservation
Division; looking south;
contributing building.



13: Hospital; survey # 70;
Fannie Hill Historic District,
Catron County, New Mexico; Chris
Wilson; March, 1987; NM Historic
Preservation Division; looking
north; contributing building.



14: Store: survey # 62; Fannie Hill Historic District, Catron County, New Mexico; Chris Wilson; March, 1987; NM Historic Preservation Division; looking east; contributing building.



15: Manager's house (left),
duplex (right); survey #s 57, 58;
Fannie Hill Historic District,
Catron County, New Mexico; Chris
Wilson; March, 1987; NM Historic
Preservation Division; looking
north; contributing buildings.



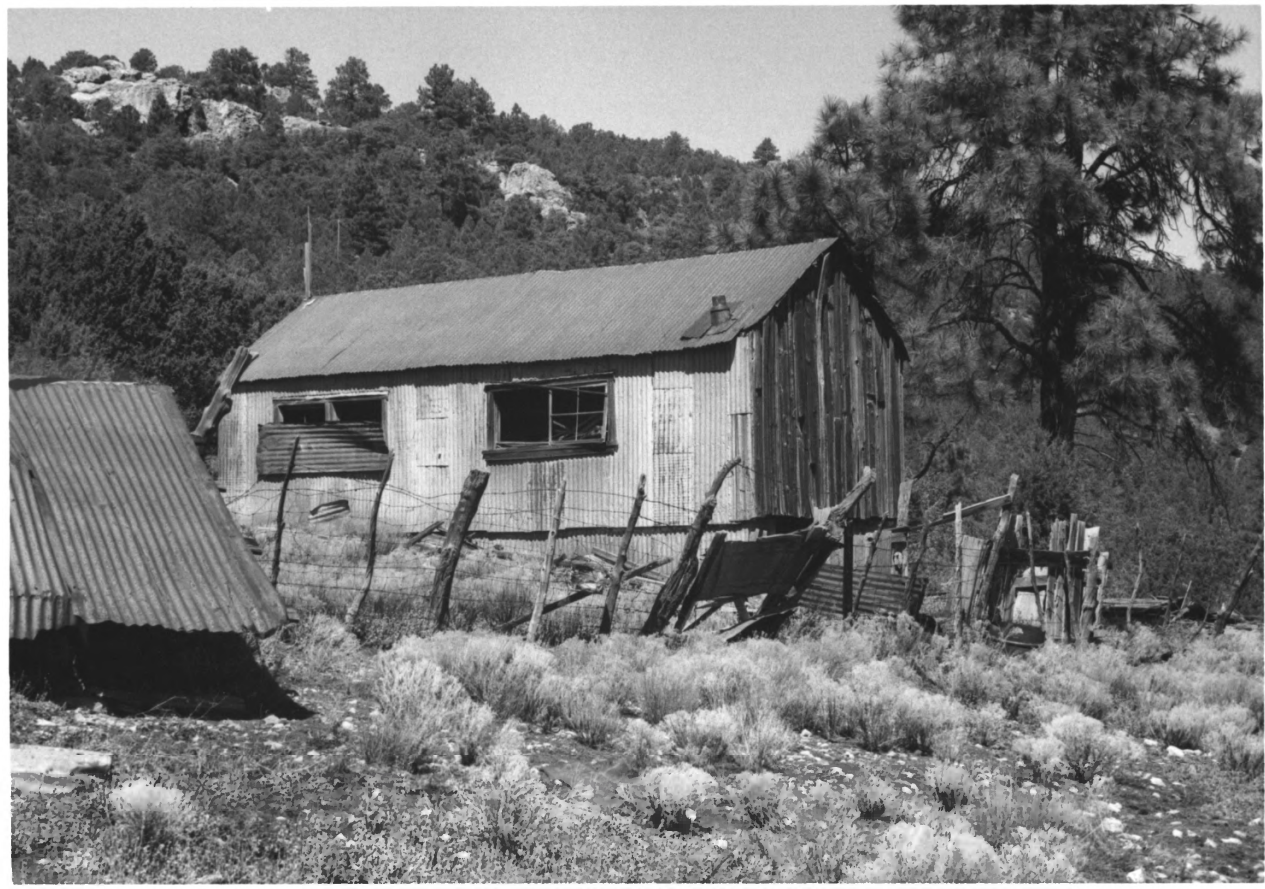
16: Duplexes; survey #s 65, 66;
Fannie Hill Historic District,
Catron County, New Mexico; Chris
Wilson; March, 1987; NM Historic
Preservation Division; looking
northeast; contributing
buildings.



17: House, rear; survey # 71;
Fannie Hill Historic District,
Catron County, New Mexico; Chris
Wilson; March, 1987; NM Historic
Preservation Division;
looking west; contributing
building.



18: Barn; survey # 81; Fannie Hill Historic District, Catron County, New Mexico; Chris Wilson; March, 1987; NM Historic Preservation Division; looking west; non-contributing building.



19: Barn; survey # 84; Fannie Hill Historic District, Catron County, New Mexico; Chris Wilson; March, 1987; NM Historic Preservation Division; looking north; contributing building.



20: House; survey # 82; Fannie.
Hill Historic District, Catron
County, New Mexico; Chris Wilson;
March, 1987; NM Historic
Preservation Division; looking
north; contributing building.